

PLAN BOTHNIA

-testing MSP in the Bothnian Sea

Hermann Backer
Project Manager
PLAN BOTHNIA
HELCOM Secretariat

Plan Bothnia Regional stakeholder meeting
6. February 2012 , Riga, Latvia





PLAN BOTHNIA -project

- DG MARE MSP "preparatory action" (MARE/2009/16)
- 18 months (Dec 2010-May 2012)
- Testing joint transboundary spatial planning in the Bothnian Sea between Finland and Sweden
- HELCOM BSAP 2007 & Rec. 28E/9: MSP principles by 2010, tested by 2012
 - Joint HELCOM-VASAB MSP principles (December 2010) – complementing the 10 EU MSP principles in Roadmap



PLAN BOTHNIA-people



Project Partners HELCOM,
VASAB, Nordregio , Boverket, SLU Coastal
laboratory (Until 31. June 2011 named
Fiskeriverket), SYKE (Finnish Environment
institute), Centre for Maritime Studies
**Sweden and Finland Ministry & EU
Commission dialogue**
**Participation of sub-national (and
national) actors central**

PLAN BOTHNIA pilot study- main outcome

- Facilitate and Involve sub-national and national actors (Bothnian Sea)
 - Five dedicated meetings
- Phase I: Assessment and background information (Bothnian Sea)
 - Assessment document and GIS datasets (Spring-Autumn 2011)
- Phase II: Spatial Plan (Bothnian Sea)
 - Test drafting of a MSP Plan based on I (winter 2011-2012)
- **No adoption aimed at-** test case and material for future Finland-Sweden dialogue

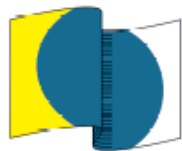


Other Components

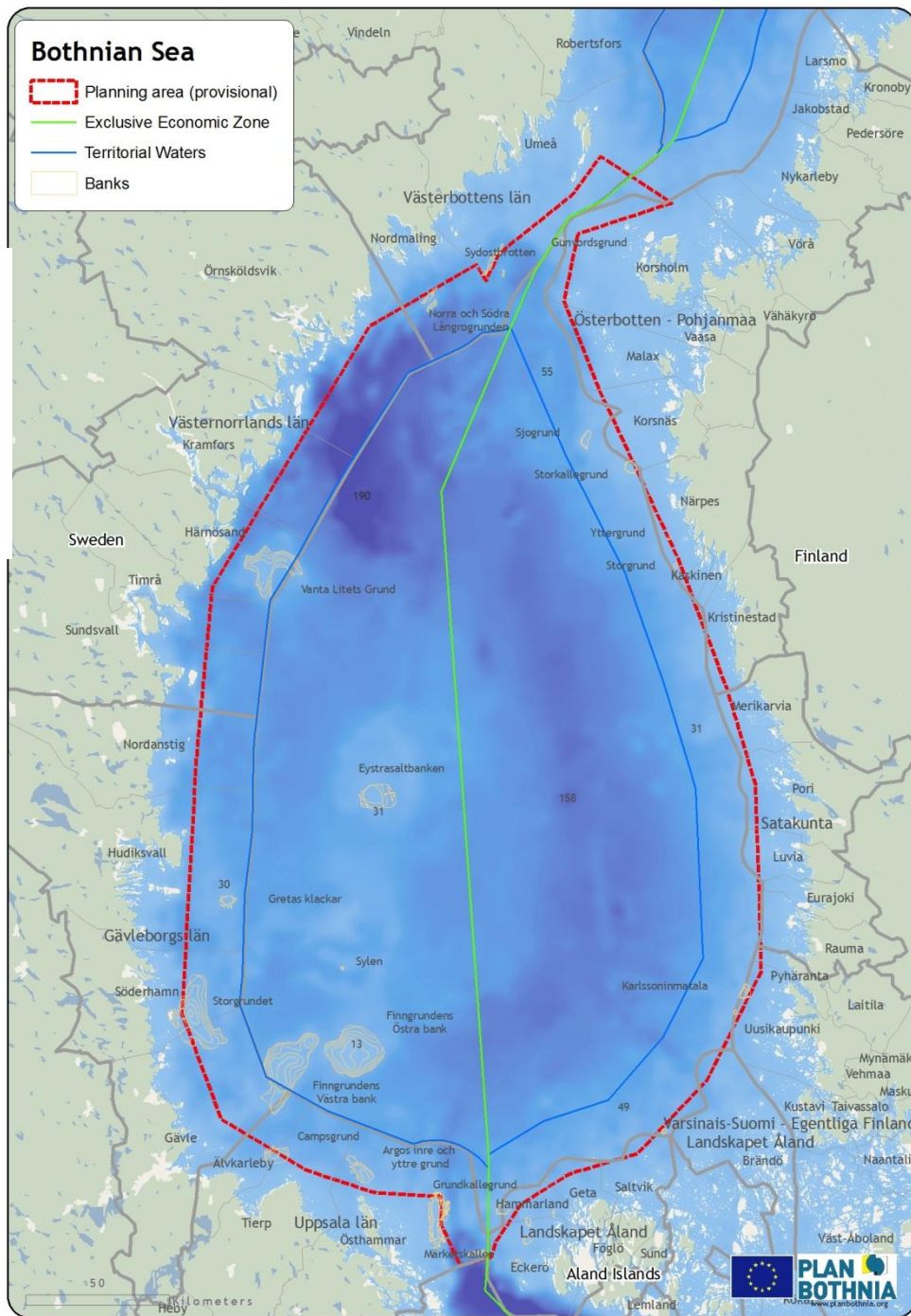
- Communication and dissemination
 - Public events
 - Website, HELCOM-VASAB MSP Group & MASPNOSE & BaltSeaPlan coop., final report
- Baltic region wide dimensions
 - Contributing consultancy reports
 - Key findings to final report
- International evaluation
 - Starting (Finalised March 2012)
- Monitoring and evaluation
 - MSP 5 meeting March 2012



PLAN BOTHNIA



www.planbothnia.org



HELCOM

PLAN BOTHNIA



PLAN BOTHNIA

www.planbothnia.org

Regional Authorities: Finland (Regional Councils)

+National actors

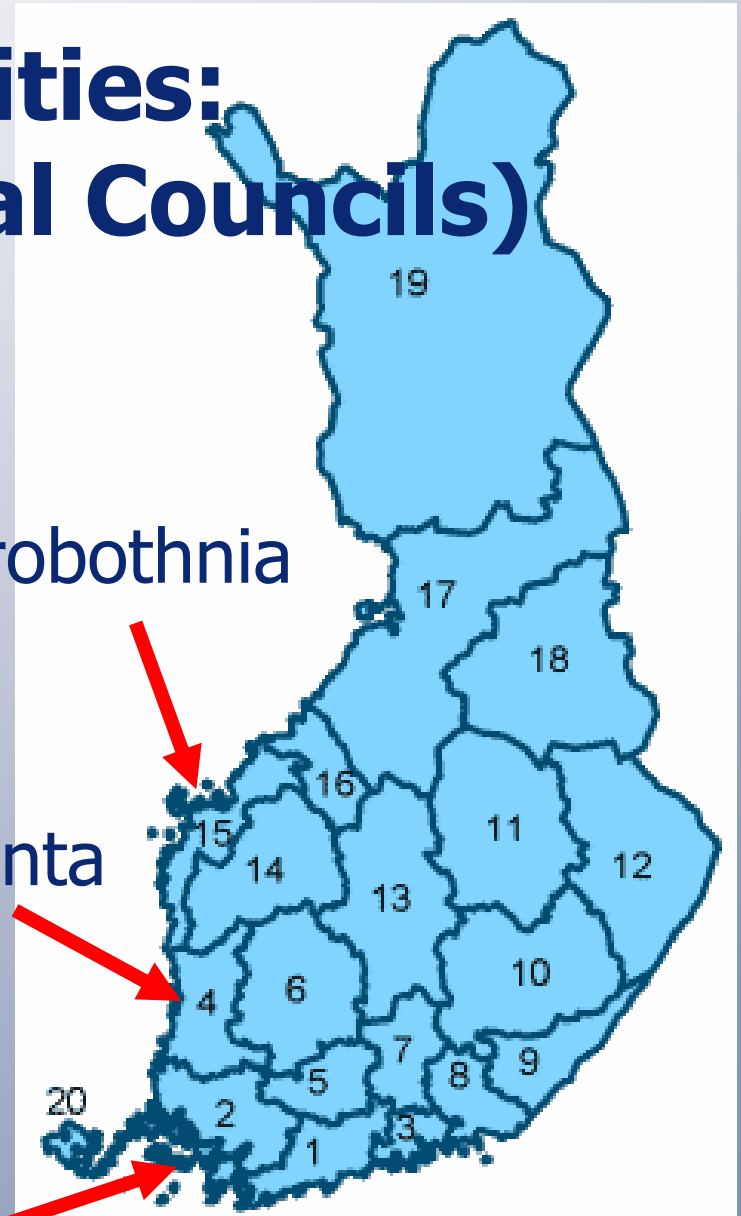
+ELY Ostrobothnia
& ELY SW Finland

Ostrobothnia

Satakunta

Åland

South-West Finland



Regional Authorities: Sweden (County Administrative Boards)

+National actors



Västerbotten

Västernorrland

Gävleborg

Uppsala

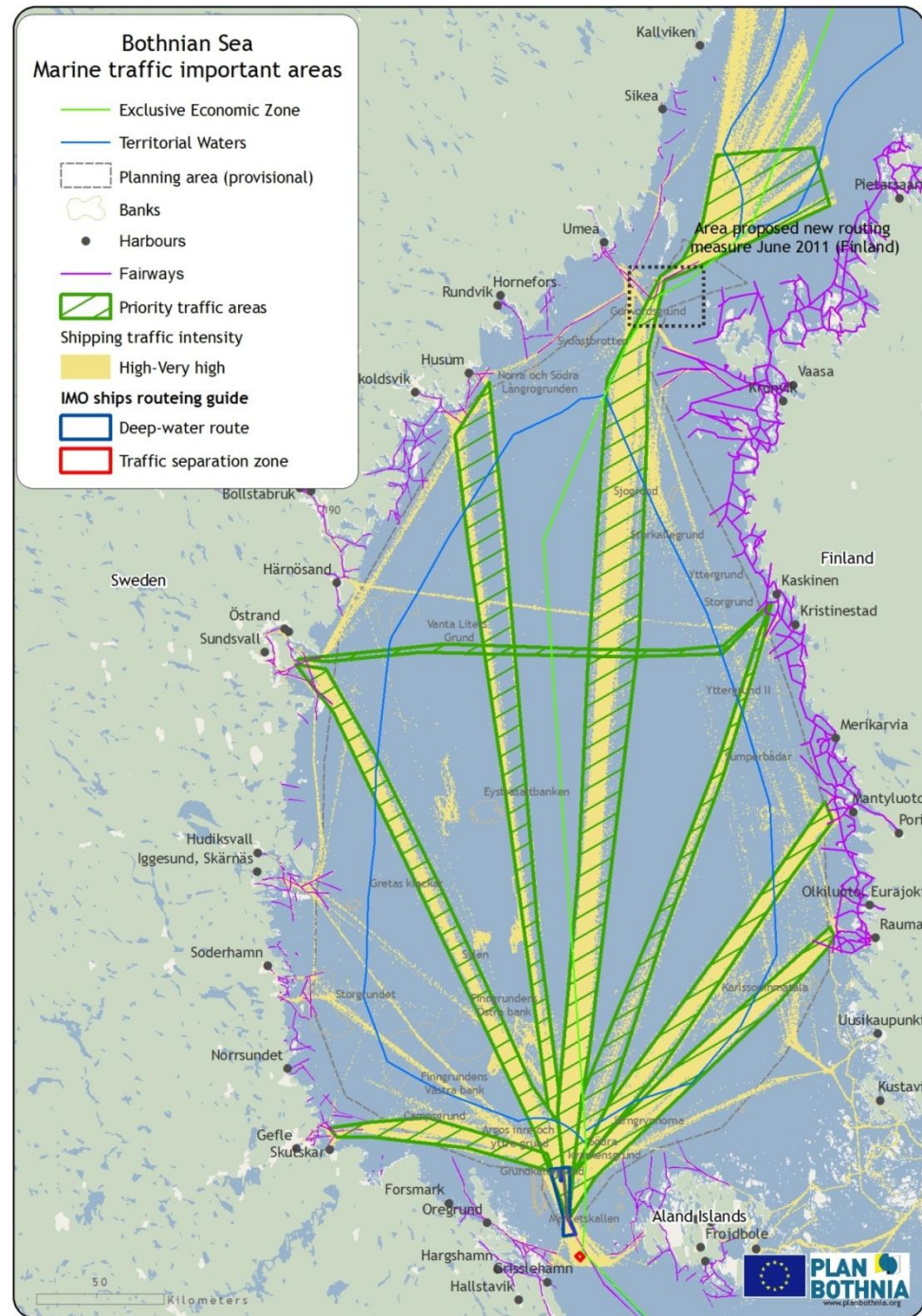


Organisation of work

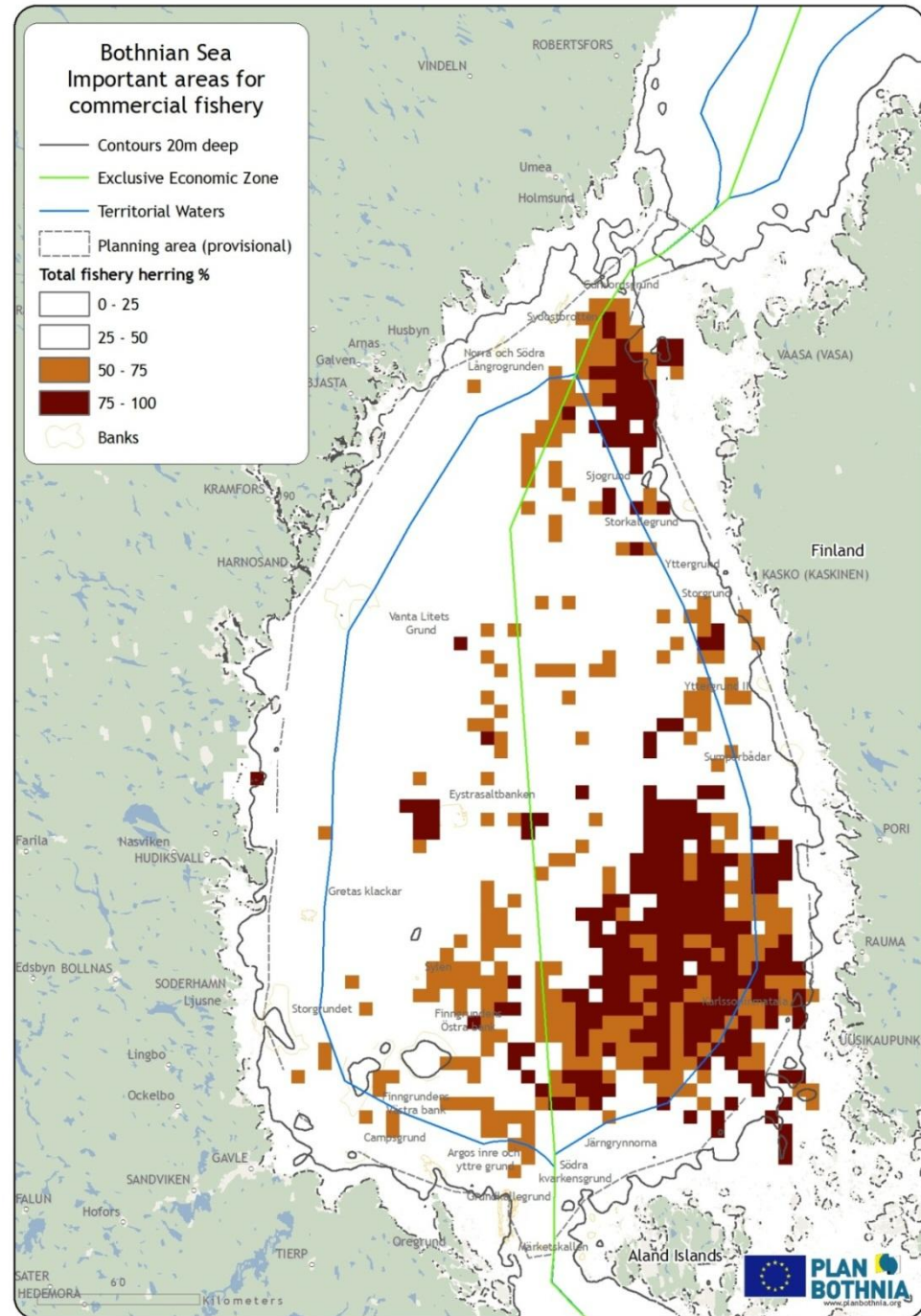
- Step 1: Starting points (March 2011, Pori)
- Step 2: Background information and issues/areas (June 2011, Uppsala)
- Public event (Sept. 2011, Helsinki)
- Step 3: Interests (Oct 2011, Helsinki)
- Step 4: Plan drafts (25.-25 Jan)
- Public event (6. Feb 2012, Riga)
- **Step 5: Conclusions (end March 2012)**
- Closing conference (21.-23. May 2012)



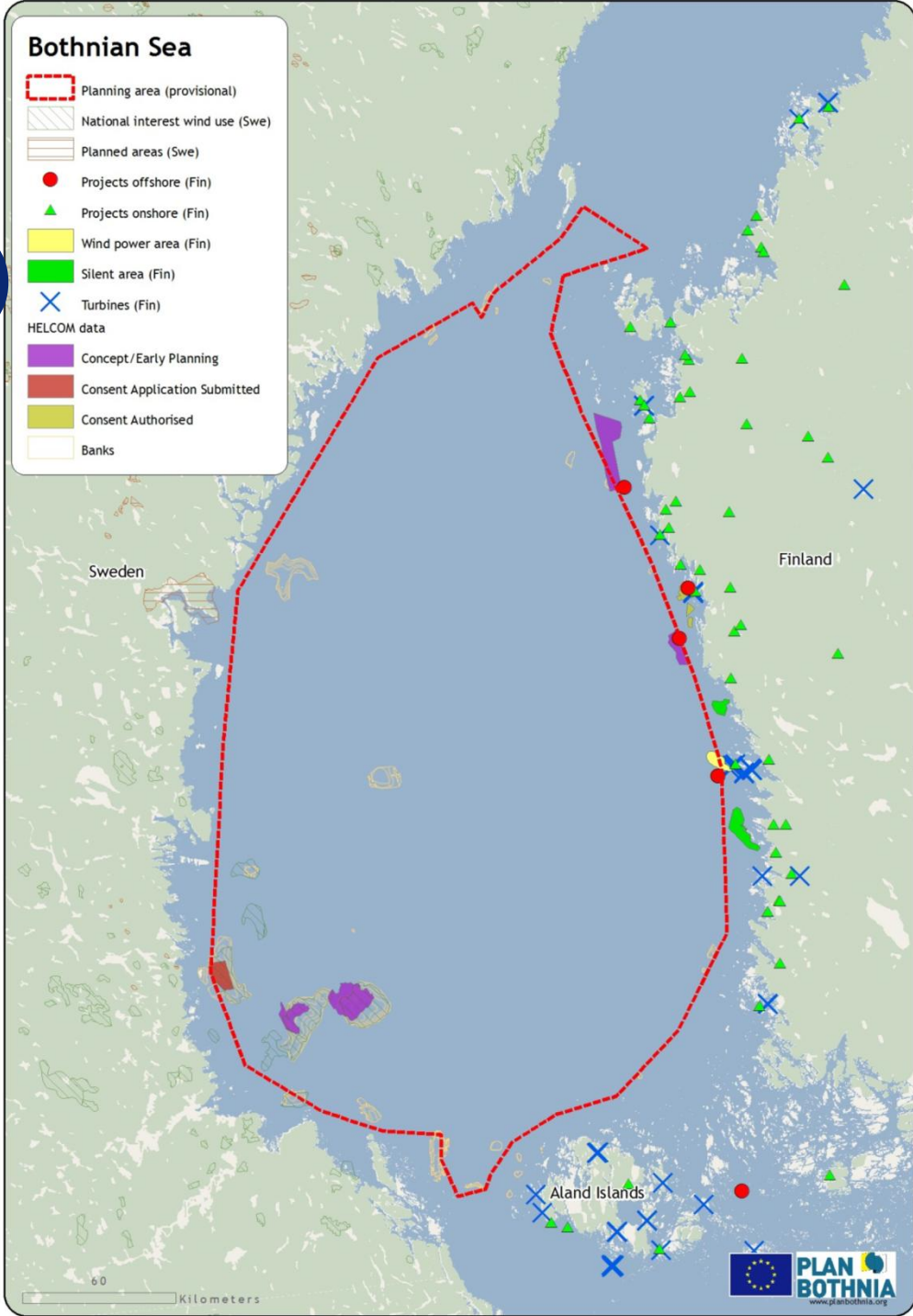
Step 2. (Jun. 2011)



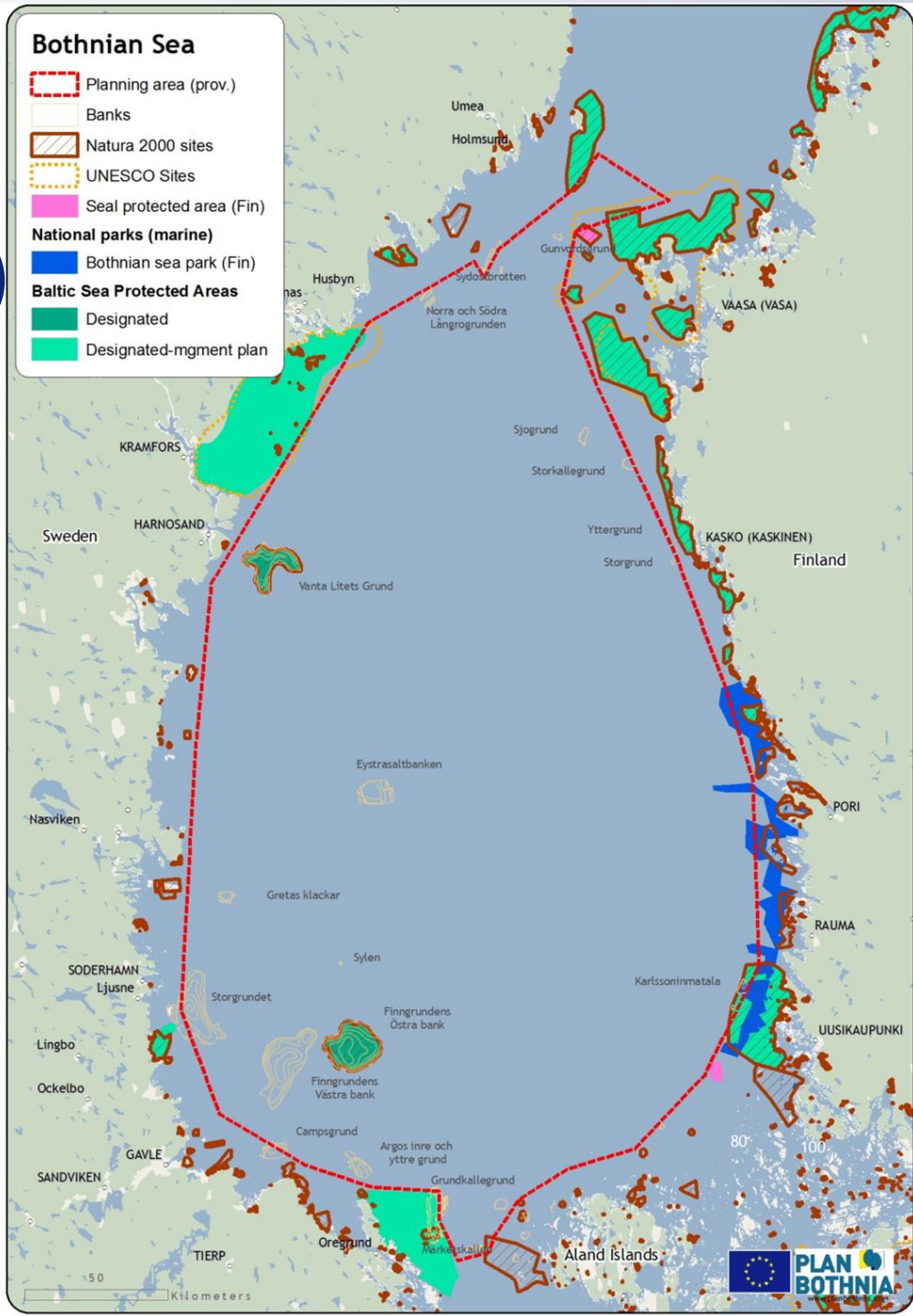
Step 2. (Jun. 2011)



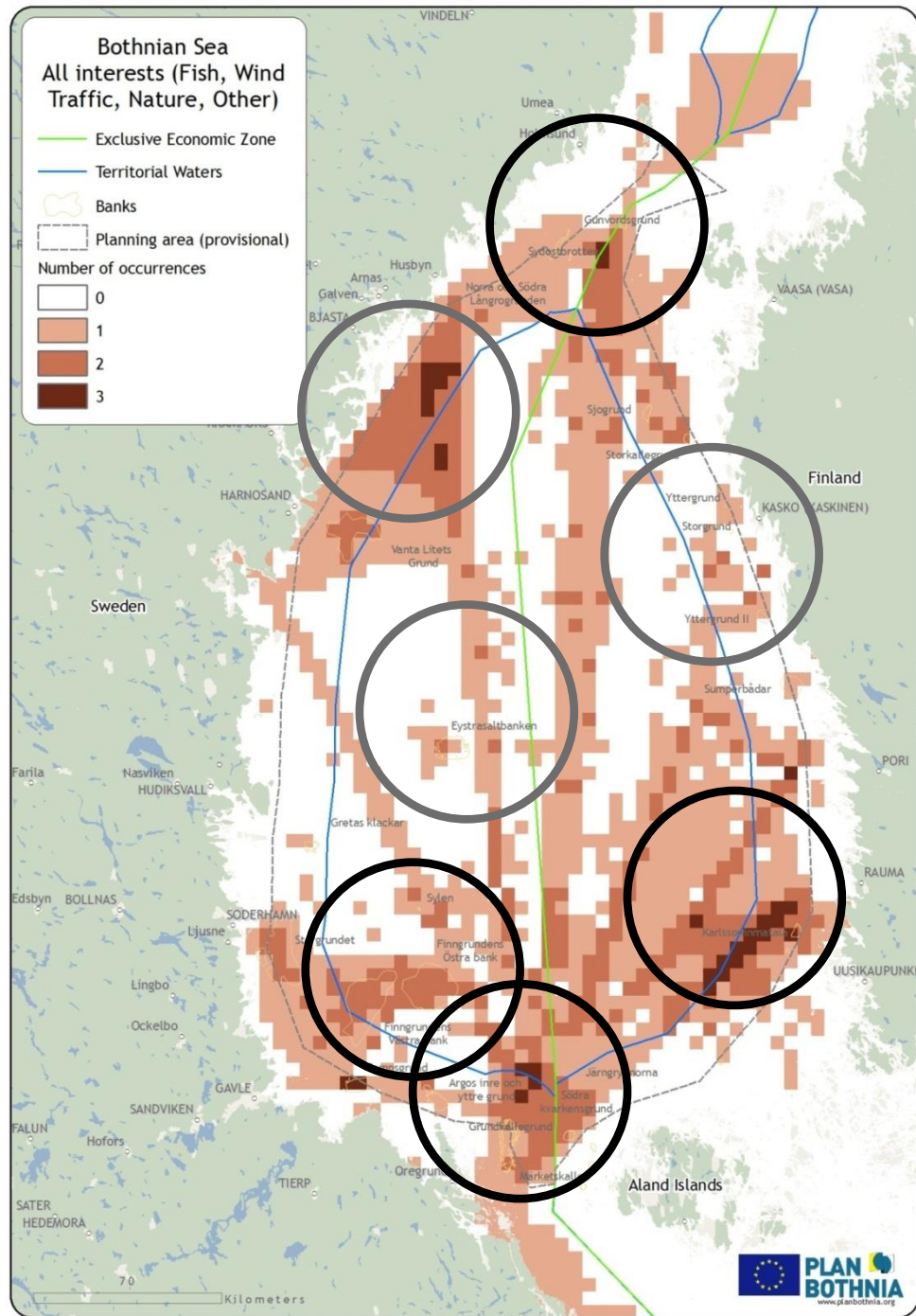
Step 2. (Jun. 2011)



Step 2. (Jun. 2011)

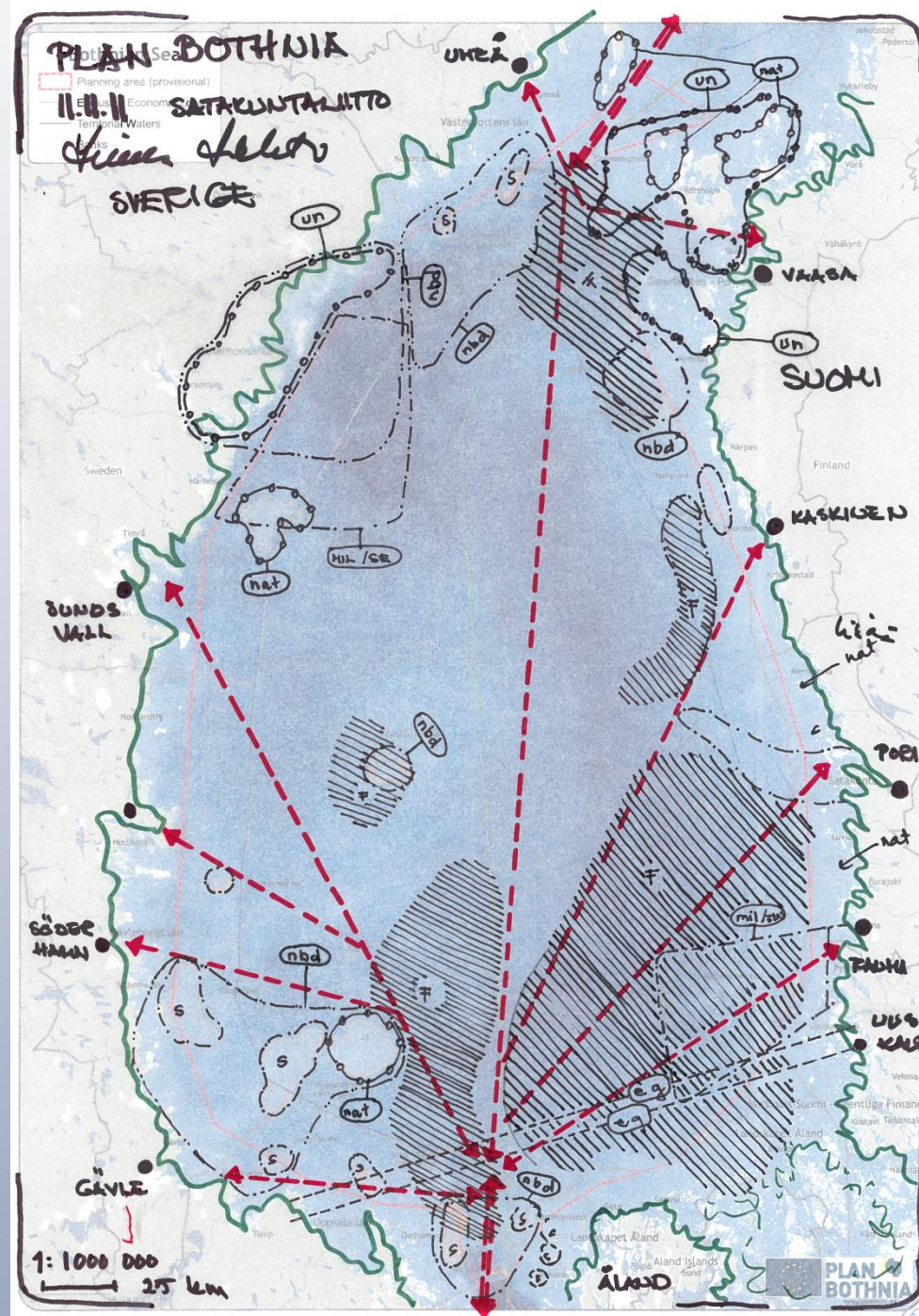


Step 3. (Oct. 2011)



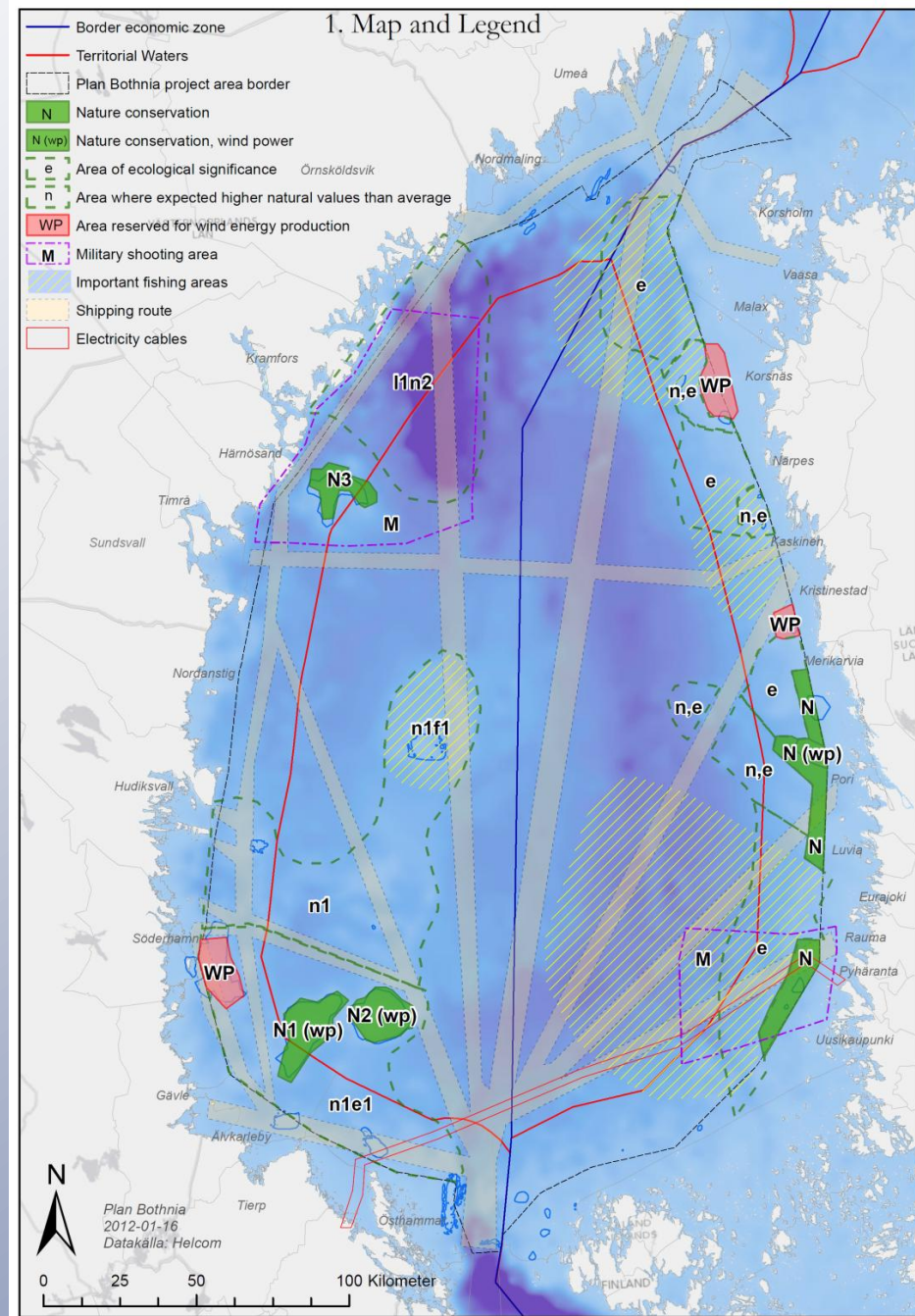
Step 4. (Jan. 2012)

Drafting 1.



Step 4. (Jan 2012)

Drafting 2.



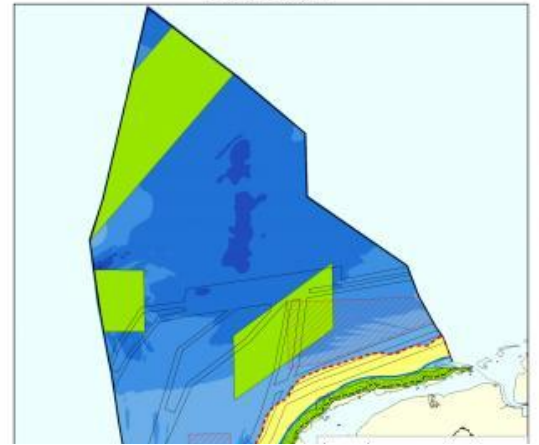
Remaining

- Finalisation of Material
- Conclusions (last meeting March 2012)
- Final report/book + pilot plan draft
- Final conference 23. May 2012
Gothenburg, Sweden



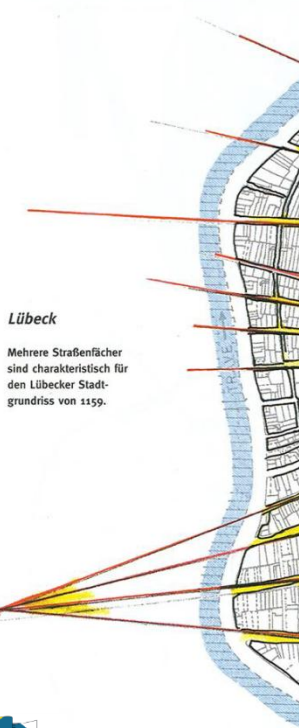
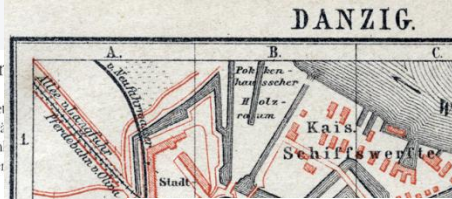
MSP of Tomorrow?

Overzichtskaat



10. Fächerkonstruktion

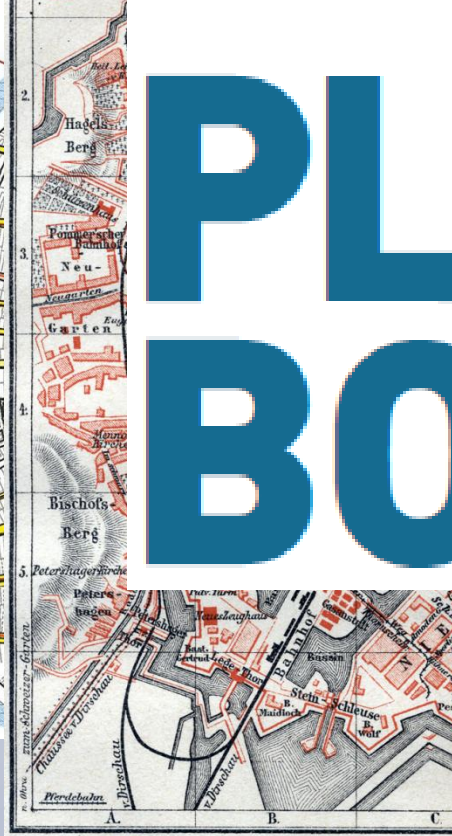
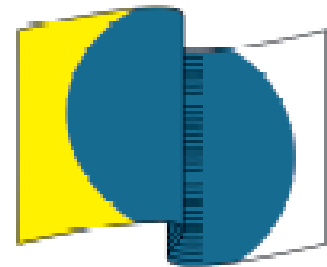
Diese interessante geometrische Struktur ist in verschiedenen Städten von einem weit entfernten Punkt fächerartig von Straßen eingemessen.



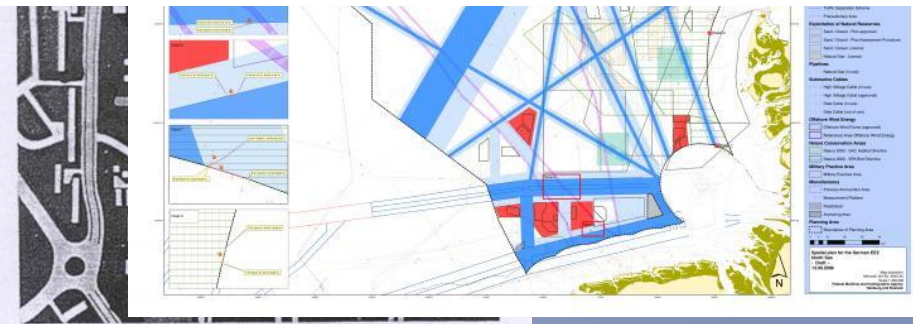
Lübeck

Mehrere Straßenfächer sind charakteristisch für den Lübecker Stadtgrundriss von 1159.

PLAN BOTHNIA



Maßstab 1 : 22.000.



HELCOM



PLAN BOTHNIA



www.planbothnia.org



PLAN BOTHNIA
MARE/2009/16
Co-financed under
European Integrated
Maritime Policy