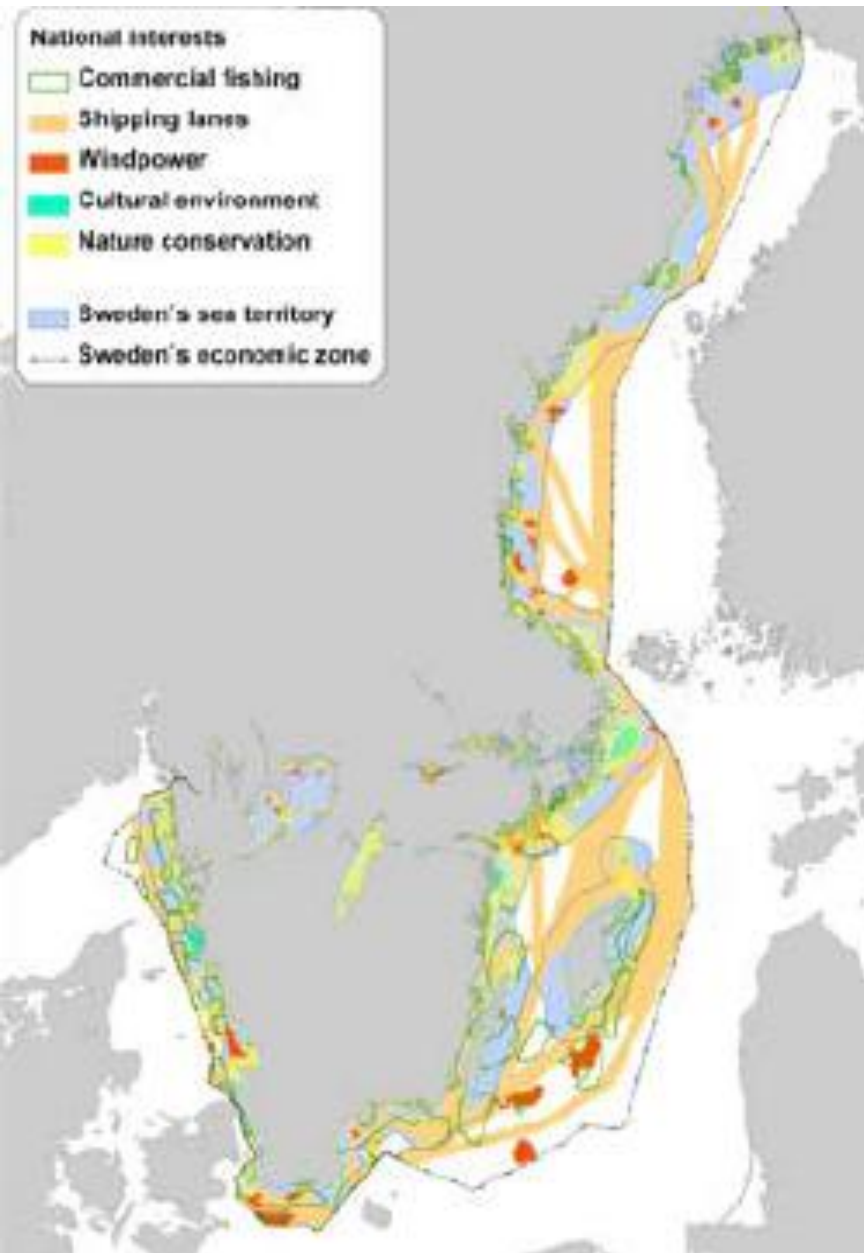


**PLAN BOTHNIA Baltic Sea Region Stakeholder Meeting
6 February 2012 Riga**

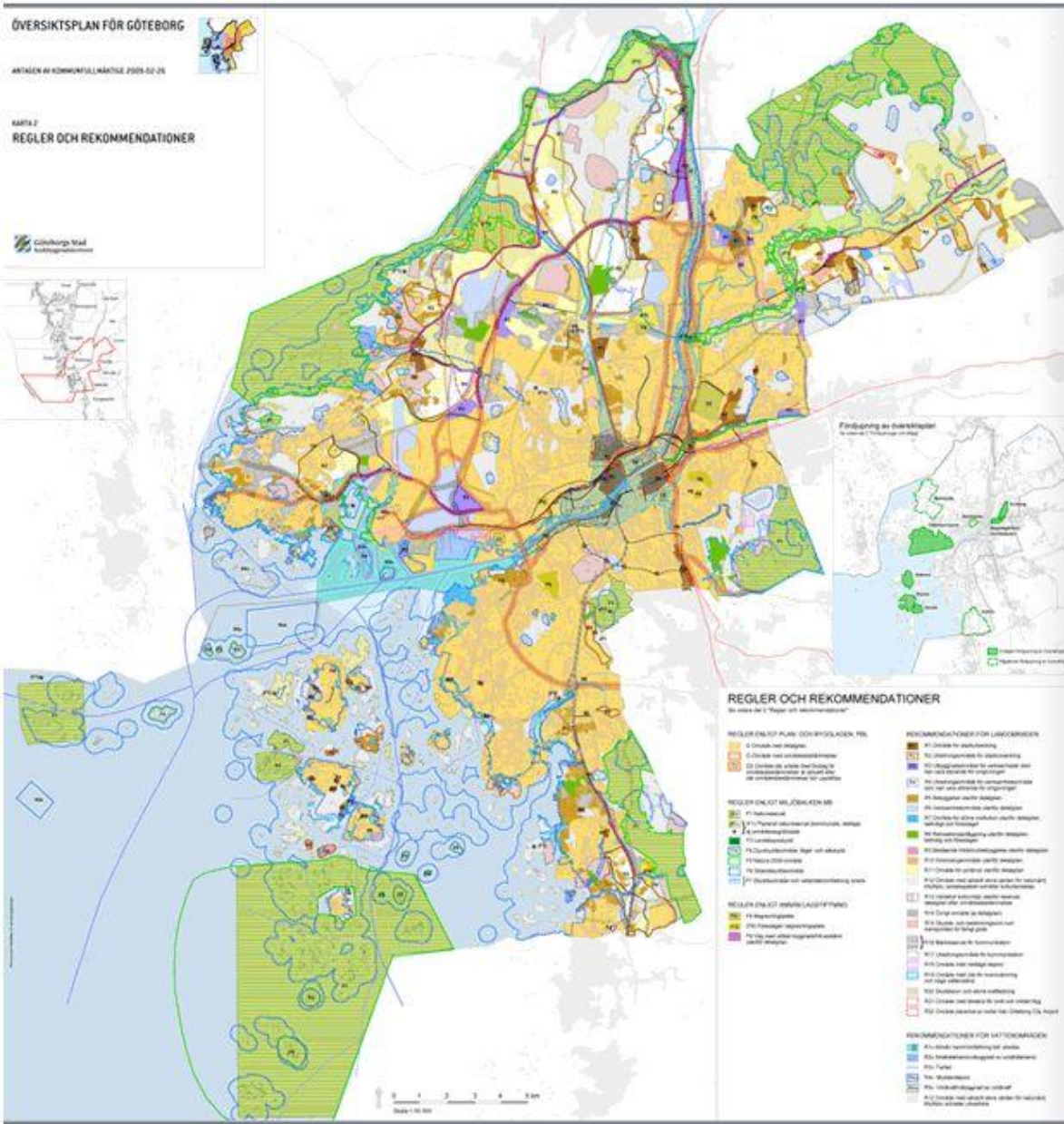
Swedish experience in the Plan Bothnia project

Sten Jerdenius – Swedish Ministry of the Environment

Planning in Sweden



- **Spatial planning is performed by municipalities only, not regions**
- **Municipalities must have a comprehensive plan covering all area in the municipality**
- **These plans are guiding, not binding**
- **The municipality area covers the Territorial Sea out to the EEZ**
- **Areas of national interest are designated in the Territorial Sea and EEZ**



Need for MSP in Sweden

- Few local but mostly national interests in off shore areas
- Only 4 of Sweden's 80 coastal municipalities have made planning efforts for off shore areas
- No overall comprehensive MSP
- No planning regime in EEZ

The Swedish Marine Spatial Planning policy



Government bill 2009:

A coherent Swedish Marine Policy

“An ecosystem based Swedish MSP should be established”

A commission on MSP

was decided and proposed in 2010 a New Law on MSP for Sweden

A new Swedish Agency for Marine and Water Management

started work in July 2010 and will be

responsible for new state operated MSP

Proposal of Commission

A Marine Spatial Plan should be elaborated for each of the three areas

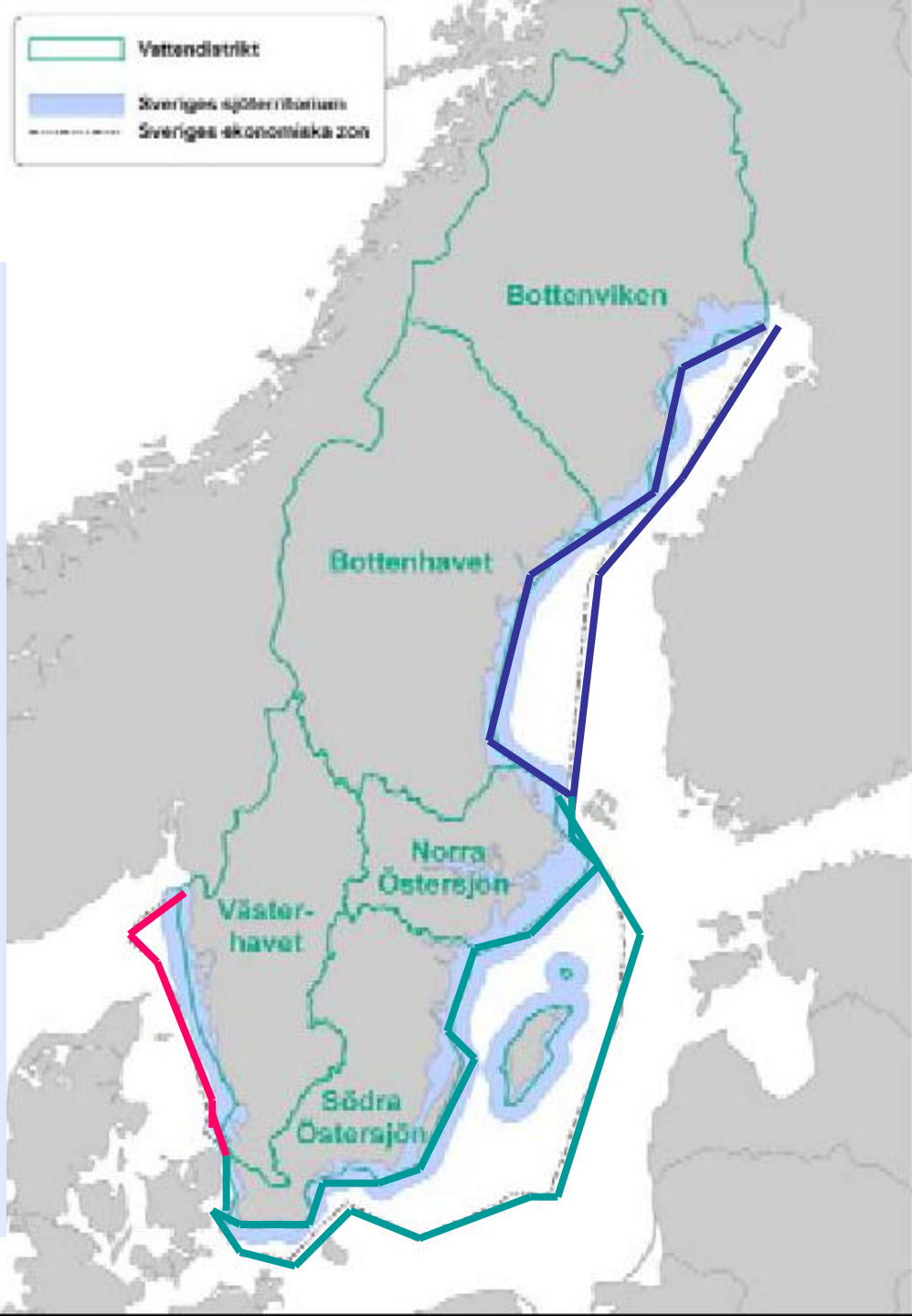
Gulf of Bothnia

Baltic Sea proper

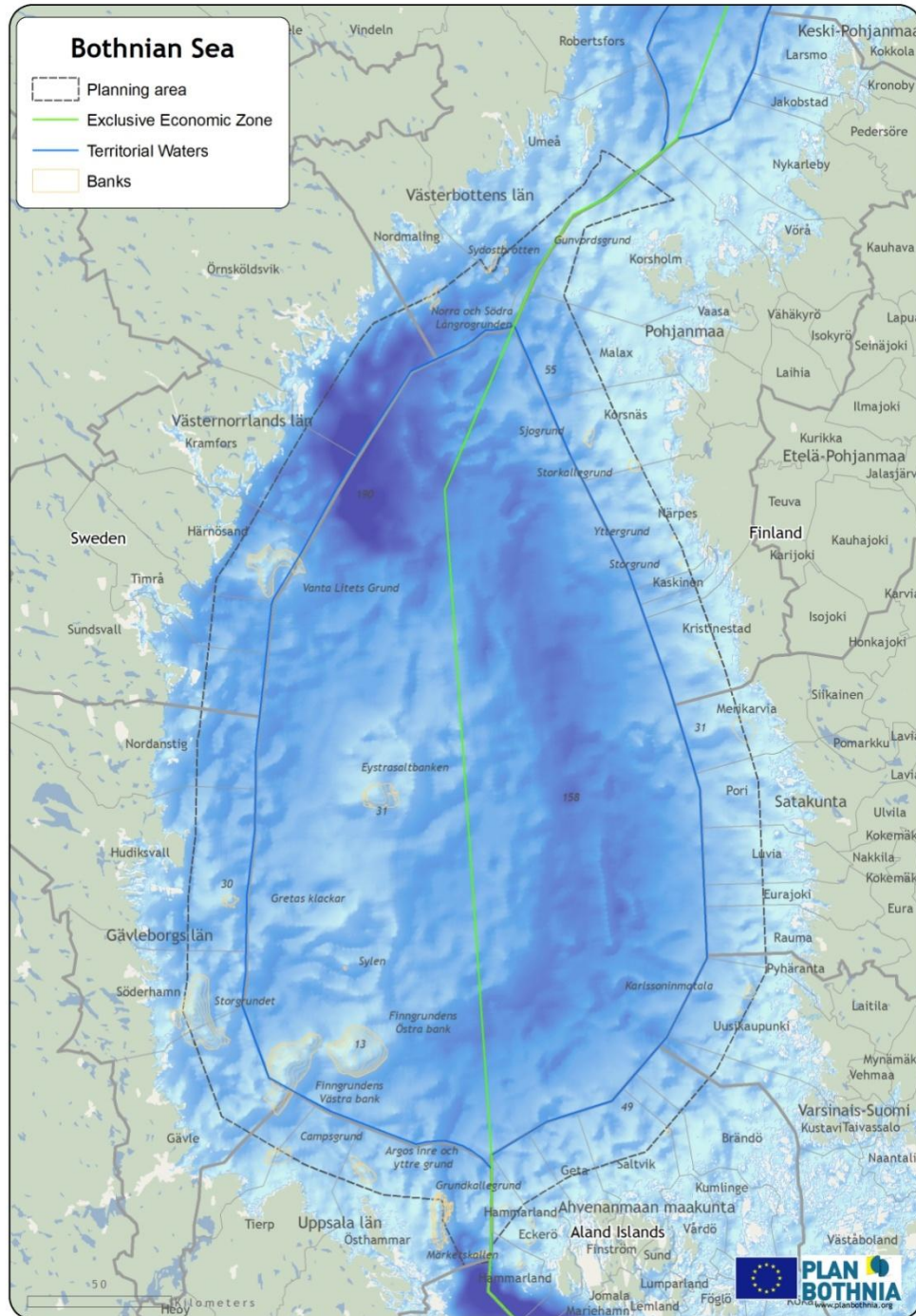
Skagerrak and Kattegatt

The National State Marine Plan should cover Territorial Sea from 1 NM from baseline as well as EEZ

Cooperation with neighbouring countries (9!) when drafting the plan



Swedish experience



A pilot test MSP for one part of future Swedish MSP - the Bothnian Sea

Valuable insight into present state of data and information for MSP

Ecosystem approach require analysis and planning of whole regional sea basin

Analysis of possible regulations in plan valuable input for drafting of legislation

Participation of national and regional authorities and councils – advice for future

SE – FIN differences and similarities

Conclusion

Plan Bothnia project is timely and well designed for giving fast MSP experience and shows that transboundary MSP is necessary and possible