



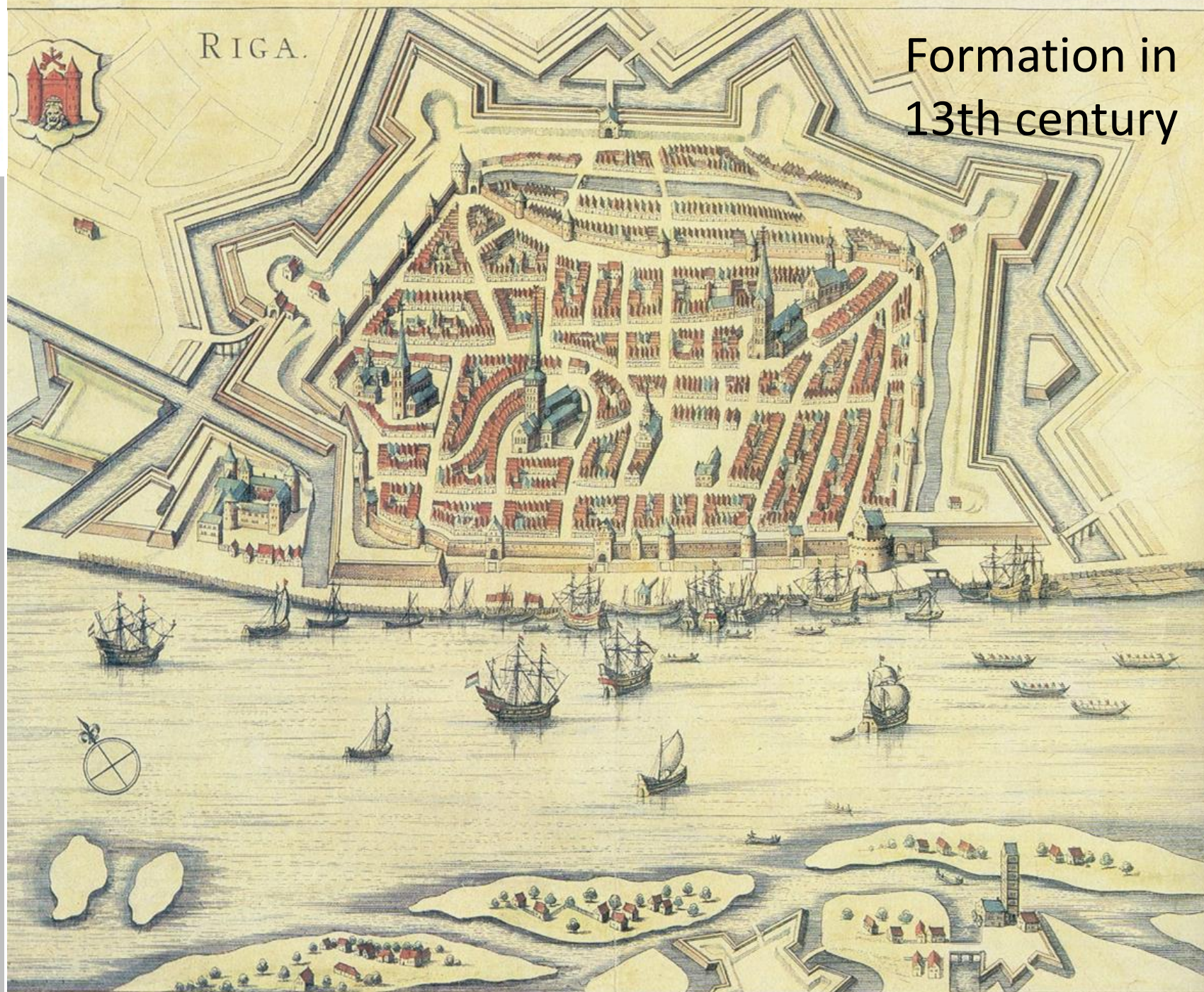
LANDSCAPE PLANNING IN RIGA

Lauma Līdaka

Riga City Council City Development Department

Territorial planner





1201 – Foundation of Riga

1282 – Hansaetic League

1581 – Under Polish-Lithuanian
Commonwealth.

1621- Under rule of Sweden

1710 – Under rule of Russia

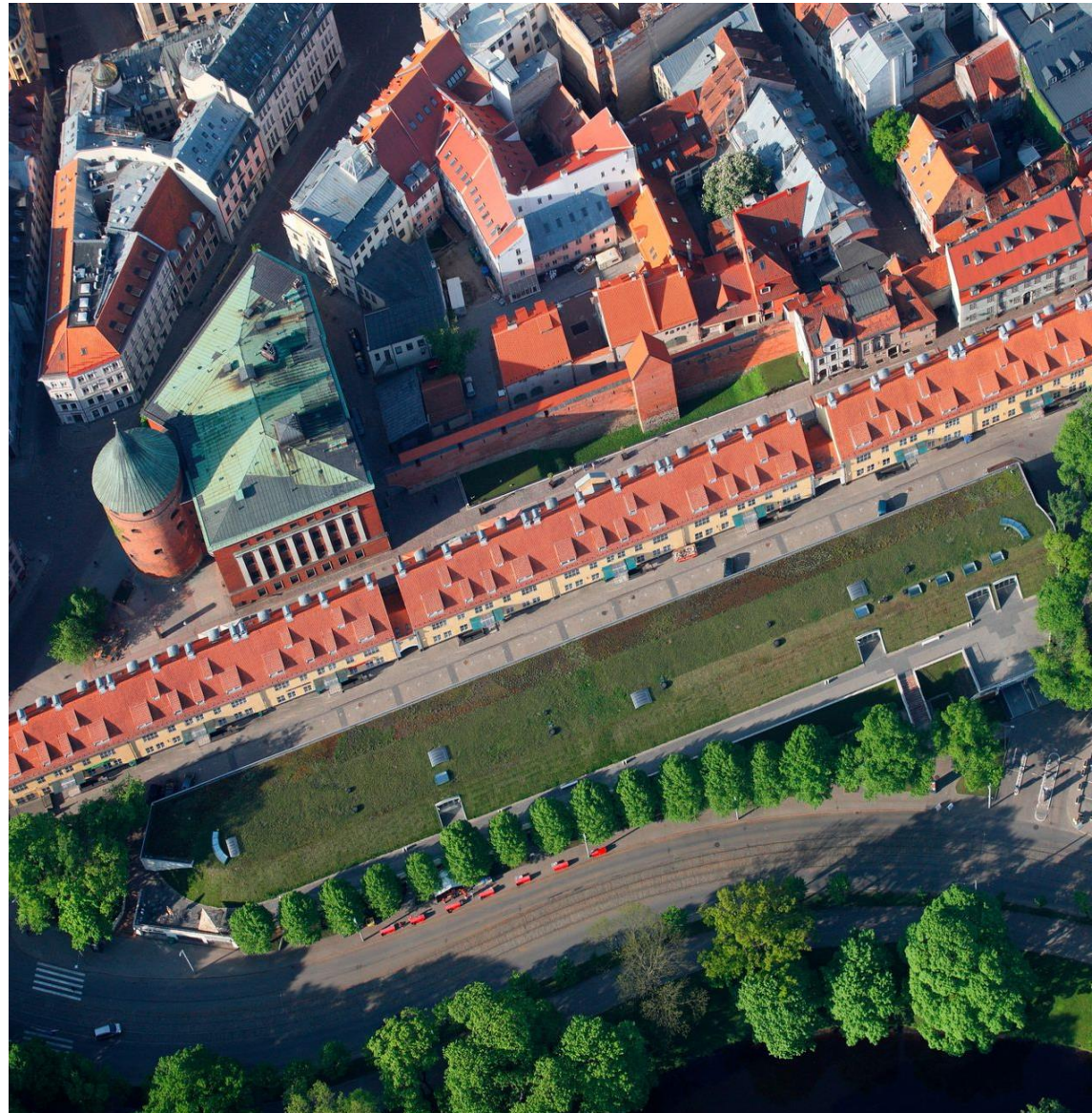
1856 – Industrial revolution

1918 – Proclamation

1940 – Soviet Occupation

1991 – Restoration of
Independence

2004 – European Union





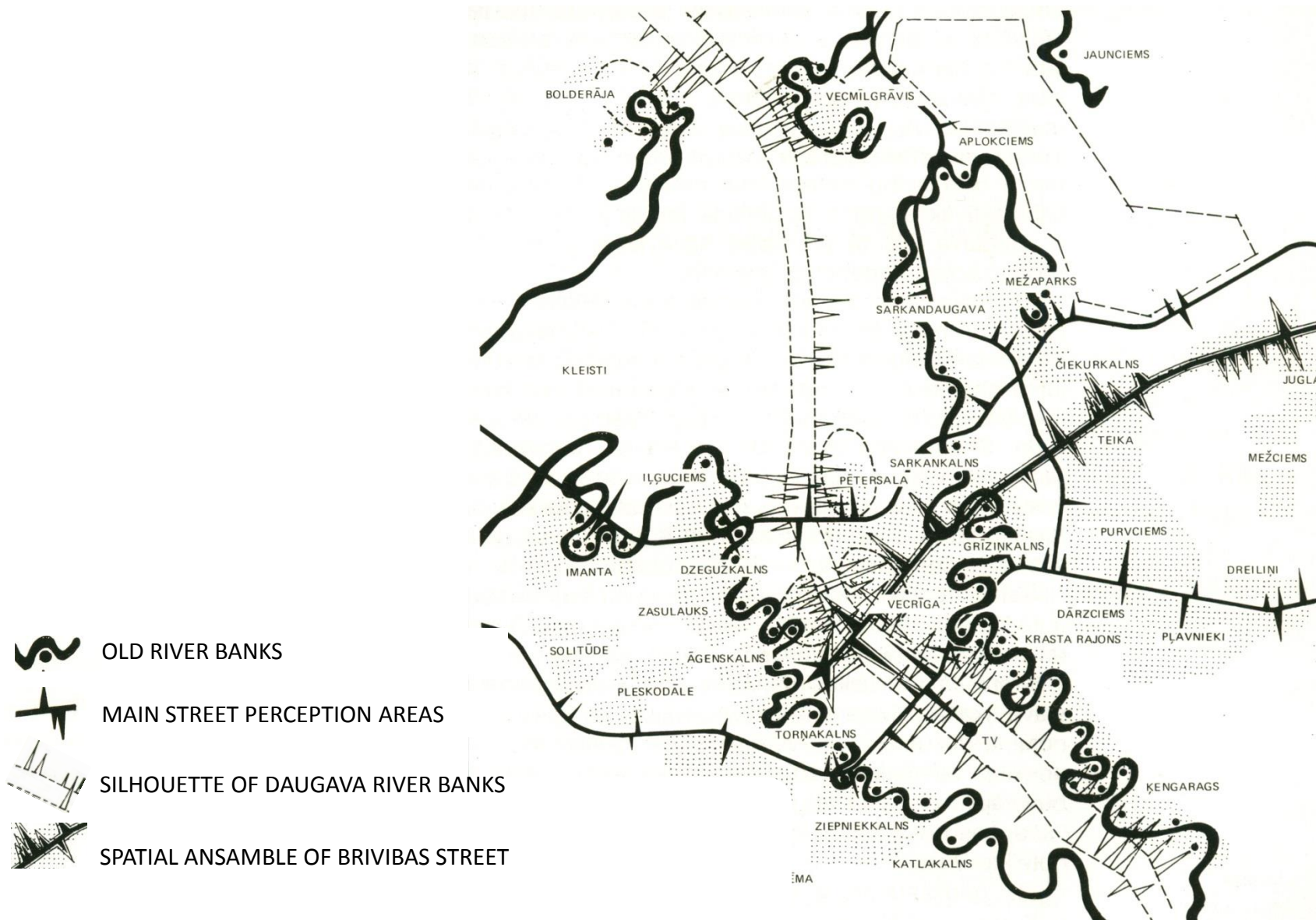
1936

RIGA DEVELOPMENT PLAN

-  LIVING AREAS
-  INDUSTRIAL TERRITORIES
-  PUBLIC TERRITORIES
-  WATER TERRITORIES
-  PORT TERRITORIES
-  GREEN SPACES
-  TERRITORIES FOR BUILDING
-  FAMILY GARDENS
-  TECHNICAL
INFRASTRUCTURE
-  RAILROAD TERRITORIES
-  RAILROAD TERRITORIES
-  STREETS
-  ALLEYS
-  CITY BORDER



PROJECT FOR HIGHRISE DEVELOPMENT IN RIGA



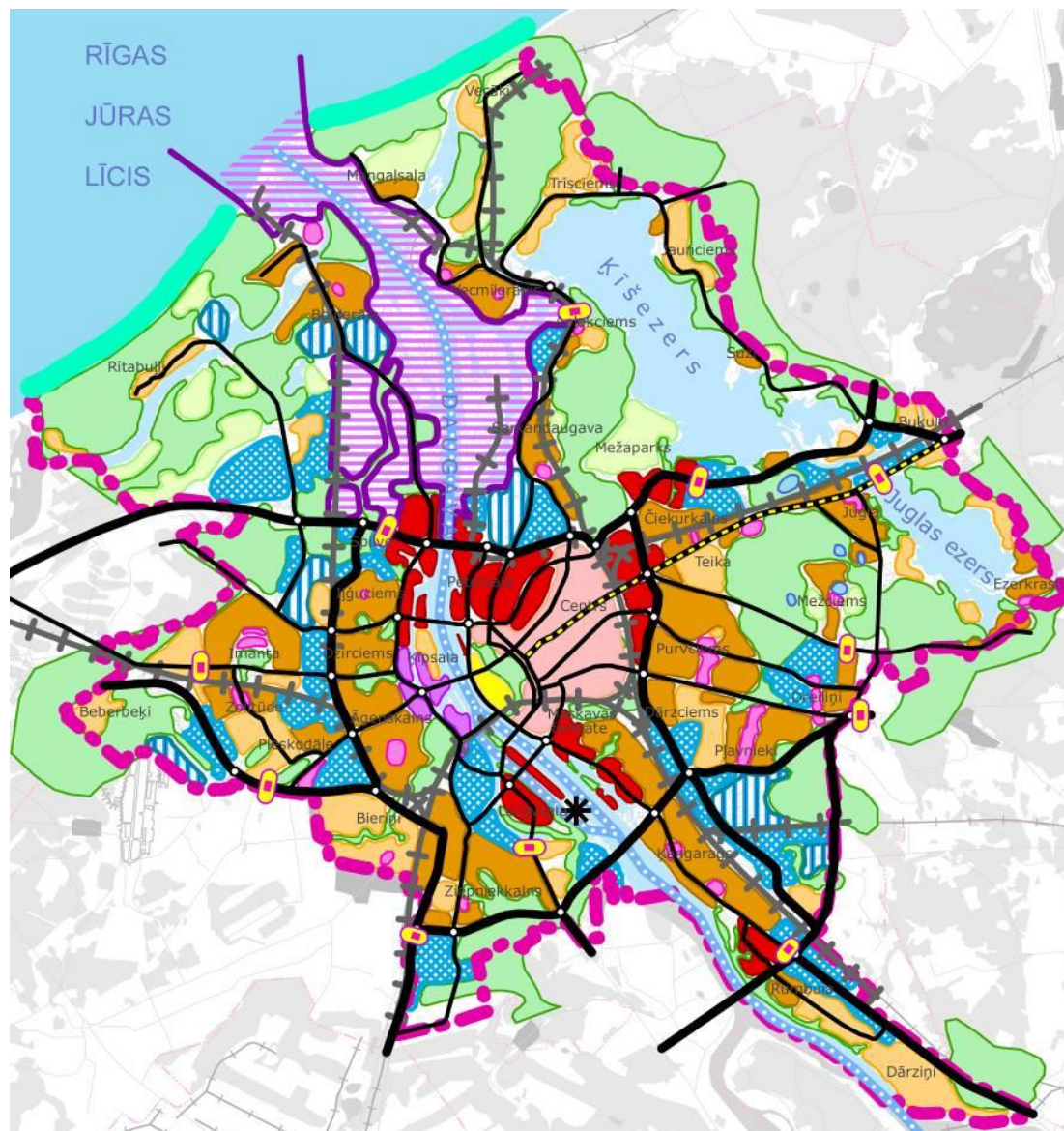
LAND USE PLAN 1995-2005 SPATIAL STRUCTURE SCHEME

-  RIVER DAUGAVA – MAIN
AXIS OF RIGA SPATIAL
STRUCTURE
-  HISTORICAL BUILDING
SILLOUETTE – OLD RIGA
-  PLANNED BUILDING
SILLOUETTE GROUPS WITH
LATVIAN CULTURE
METAPHORES
-  TV TOWER – SPECIAL
LANDMARK
-  MAIN TRANSVERSE AXIS
-  BOULEVARD, STREETS
-  HISTORICAL CENTRE
-  MAIN ROADS WITH VIEW
TOWARDS LANDMARKS
-  RIVERBANK PARKS
-  GATES OF RIGA



LAND USE PLAN 2006 – 2018 SPATIAL STRUCTURE SCHEME

-  ROADS
-  MAIN TRANSVERSE AXIS
-  RAILROAD
-  RIVER DAUGAVA – BACKBONE OF RIGA
-  SEA SIDE
-  ACCESSIBLE WATERFRONT
-  RIGA FREE PORT BORDER
-  HISTORICAL CENTRE OF RIGA
-  NEW DEVELOPMENT
-  LIVING AREAS
-  INDUSTRY
-  RIGA FREE PORT
-  GREEN TERRITORIES
-  OLD RIGA – IMPORTANT SILHOUETTE GROUP
-  NEW CENTRE OF RIGA
-  LOCAL CENTRES
-  CITY GATES
-  SPECIAL LANDMARK – TV TOWER

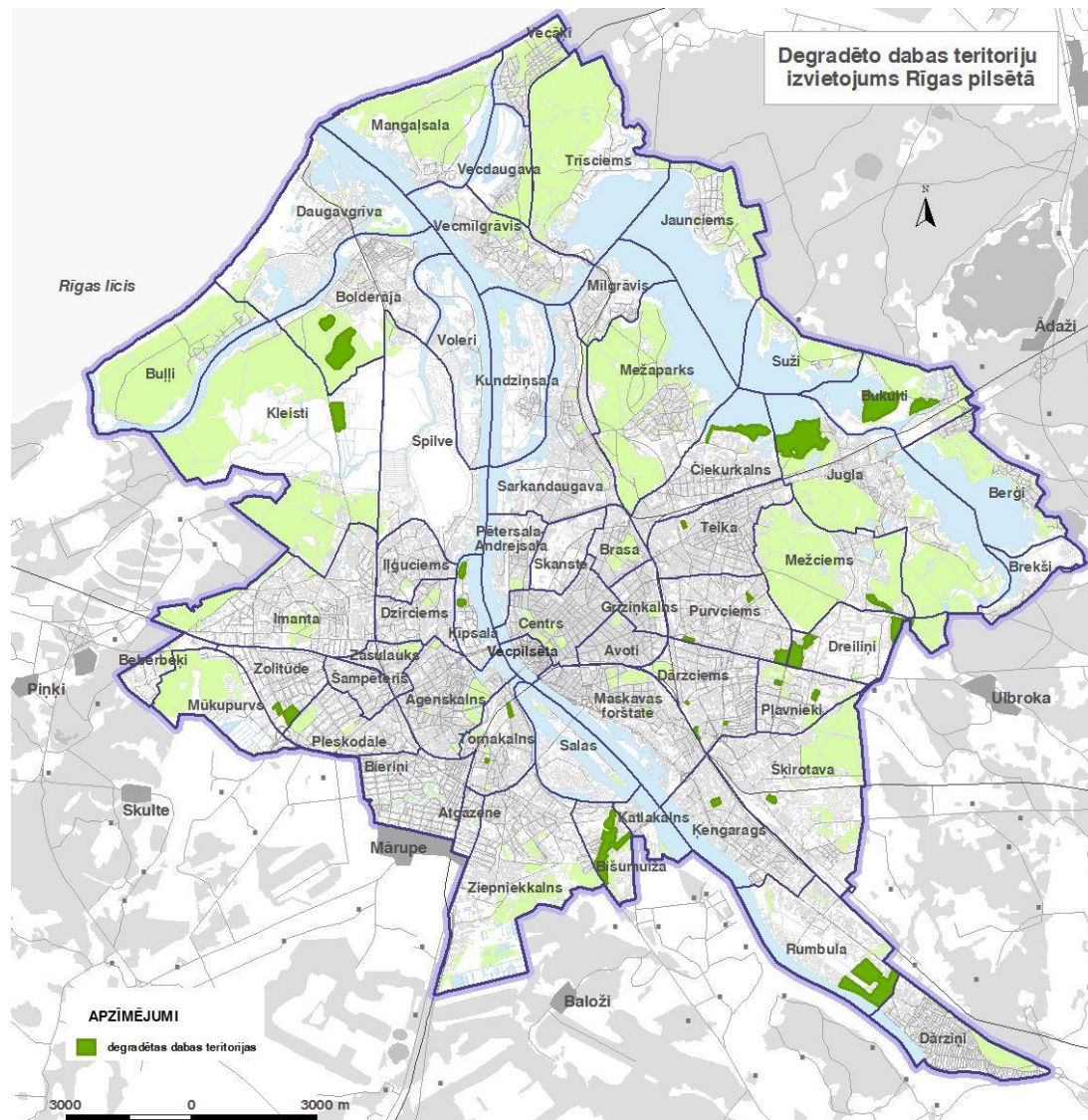






NEIGHBOURHOOD:

it is a territory of appropriate size, that has its own services, identity and character that arises from the local building type, physical boundaries, landscape and a sense of community





2008

Latvia ratifies the European Landscape Convention

2011

New Planning law and Regulations of the Cabinet of Ministers are approved

2012

Work on new territorial plan for Riga is started

2013

Landscape policies for year 2013-2019 are approved at State level



TASKS:

- **Identify and document landscapes** in whole territory of Riga, analyse their characteristics as well as forces and influences that creates them.
- Introduce **instruments for protection, management and planning** of landscapes of Riga.
- Define **landscape quality objectives** and actions to realize them.
- Initiate **development of landscape policy** of Riga.
- Promote **awareness about landscapes**, their role and changes in both, society, private and state organizations.



WHAT HAS BEEN DONE?

- Research
“Identification, analysis and assessment of landscapes in Riga”
/2009/
- Research
“Determination of Riga landscape quality objectives”
/2013/
- Project
“Landscape thematic plan”
2014 until now



“Identification, analysis and assessment of landscapes in Riga”

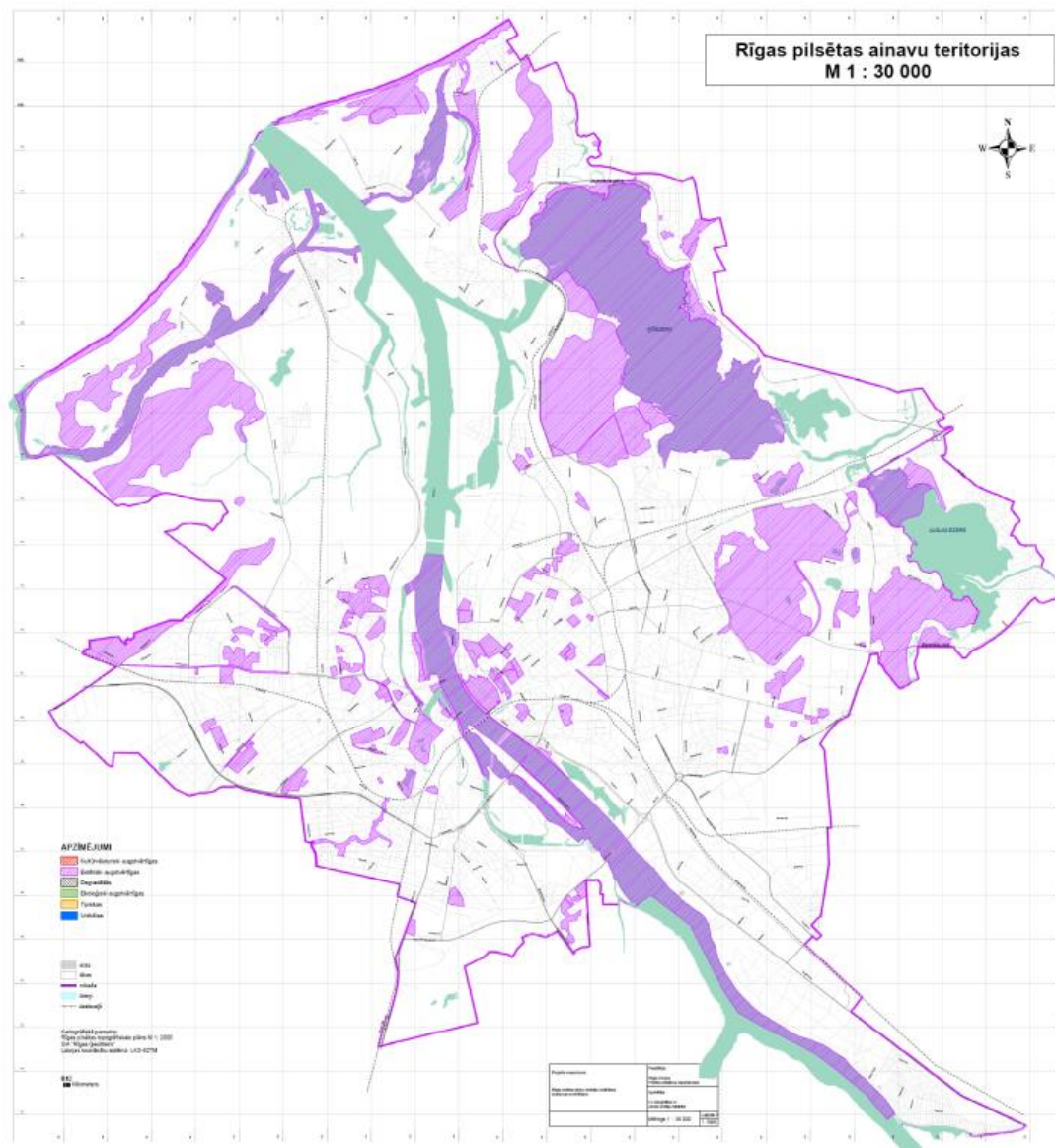
Year: 2009

Authors: University of Latvia, Faculty of Geography and Earth Sciences



- [illegible]

- **The scale:** City
- **Evaluated by:** Experts
- **The criteria:**
 - Composition
 - Colour and material
 - Quality of greenery
 - Quality of landscape elements
 - Free of visual pollution
 - Positive emotions





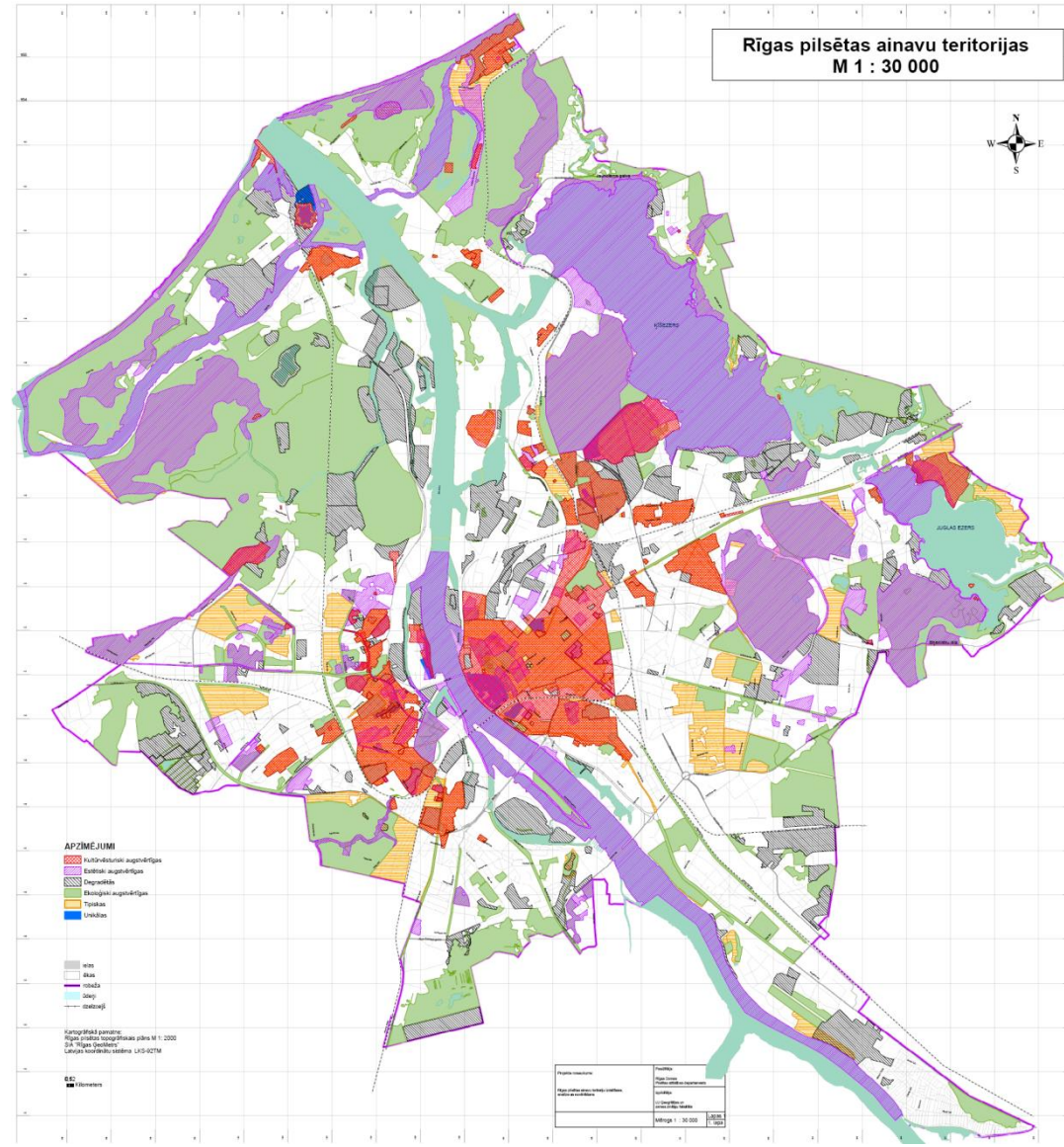
INHABITANTS SURVEY

- **No of interviews:** 750
- **Questions about:**
 - Unique and typical landscapes
 - Most valuable spaces
 - The places with best view
 - The things/processes that lowers the quality of city landscape
 - Quality of green environment



- Sets the rules
- Clearly sets actions that need to be undertaken

- White spots
- Emphasis only on special places
- Mostly evaluated by experts





“Determination of Riga landscape quality objectives”

Year: 2013

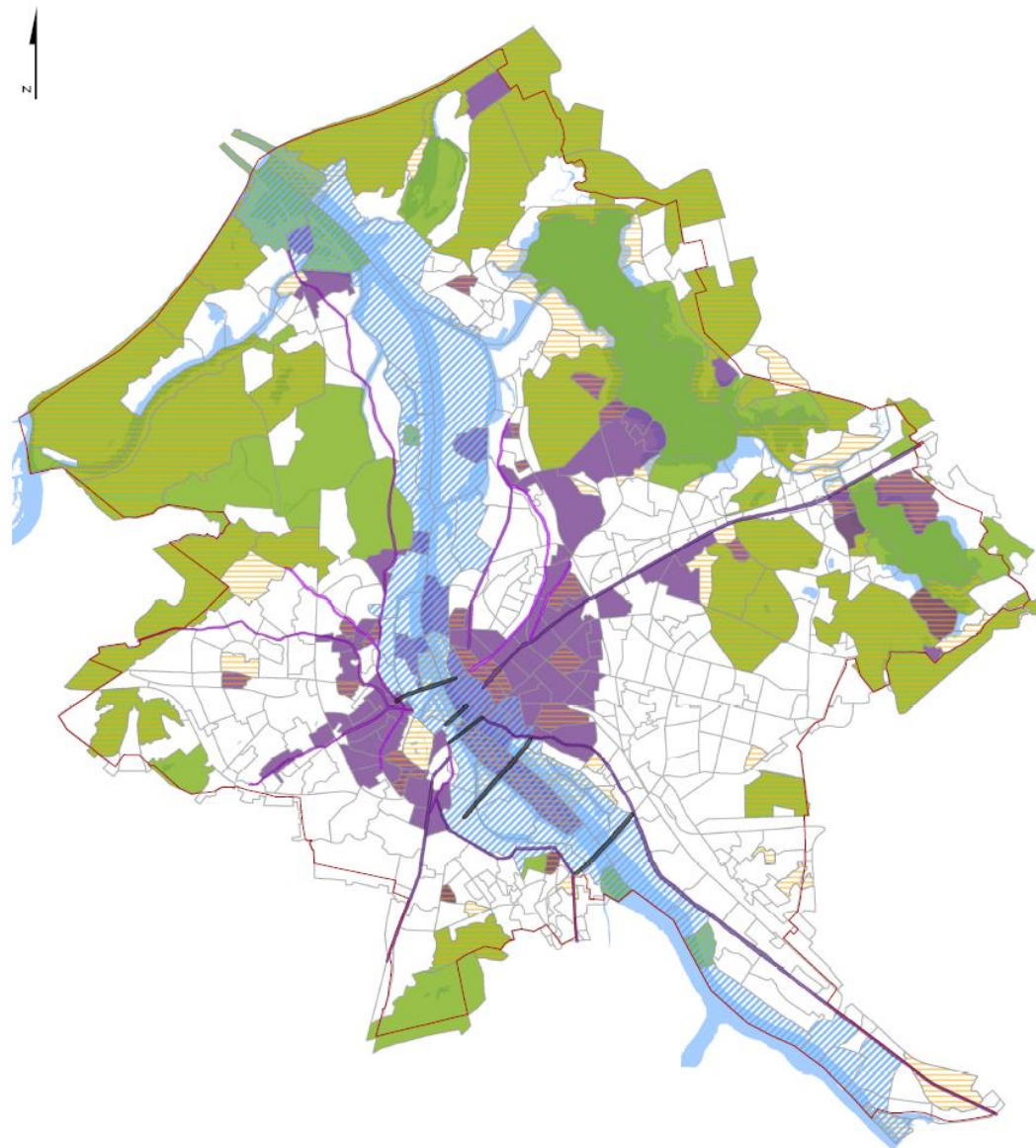
Authors: “Vides risinājumu institūts”

«Landscape is an area, **as perceived by people**, whose character is the result of the **action and interaction of natural and/or human factors**»

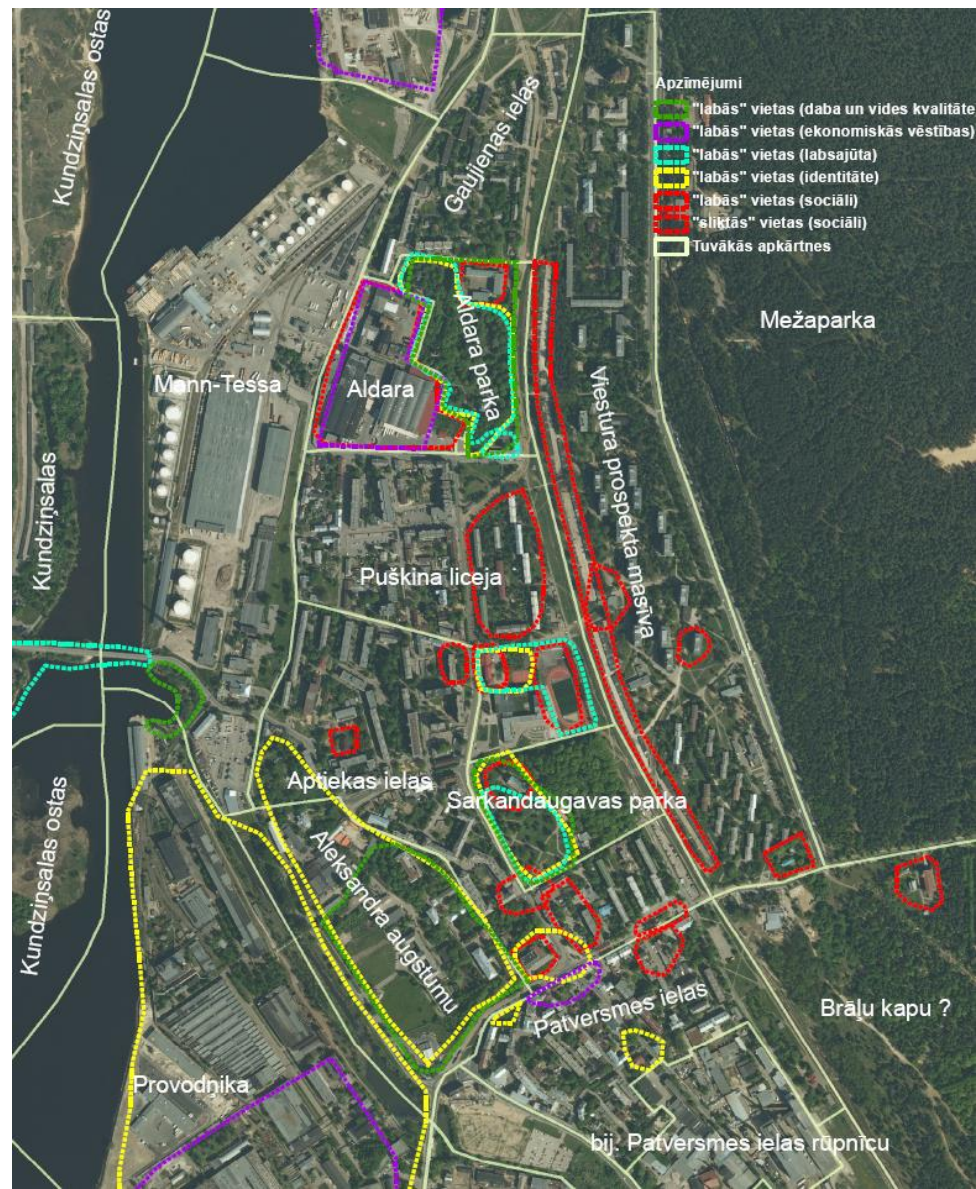
- Material space defined by functionality and morphology of spaces
- Local landscape areas



- Symbolically important spaces with national importance
- Historical development, monuments, protected natural territories.



- Spaces that are formed by everyday practices of people.
- Can be evaluated by using people knowledge about their space





LIVED SPACE

Local landscape area	Status of landscape	Qualitative living space	Diverse public spaces	Safety	Means of transportation	Heritage protection	Nature protection	Neighbourhood identity	Sustainable economic development
		1	2	3	4	5	6	7	8
Sarkandaugava park	Neighbourhood								
Aleksandra augstumi	City								
Aldara park	Neighbourhood								
Aldara factory	City								
Aptieka street	Everyday								



PLUS

- Active society involvement
- Planning on a local level

MINUS

- Hard to implement at the territorial plan level
- Time and resources consuming
- Asks for serious administrative changes
- Activity of inhabitants/stakeholders



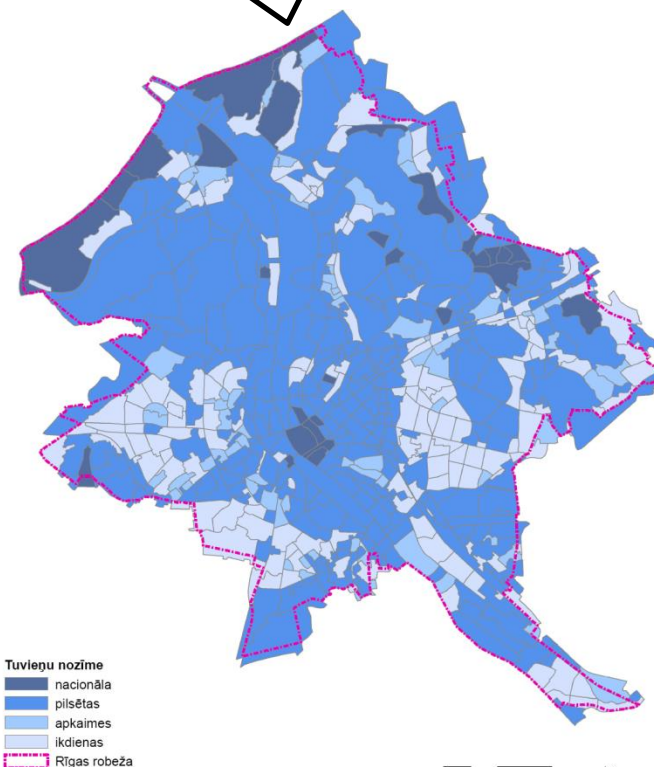
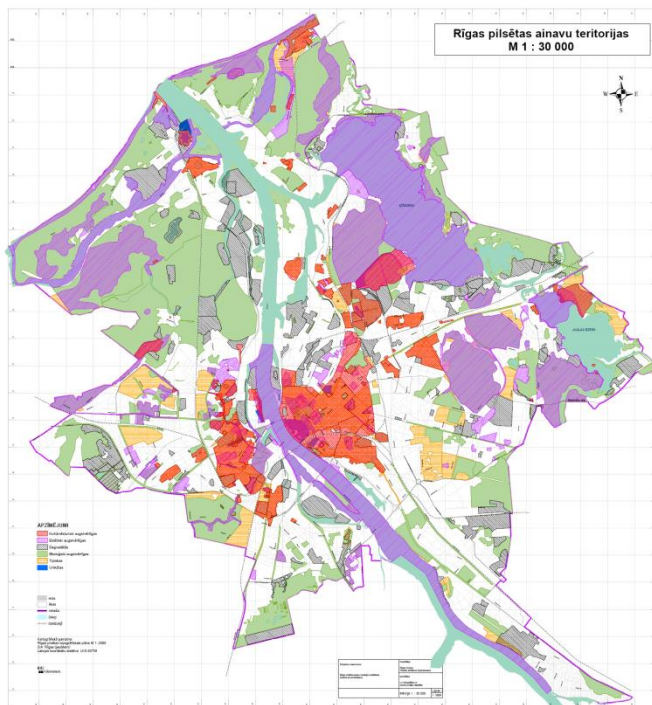
“Development of Landscape thematic plan”

Year: 2014 – until now

Authors: METRUM

General rules for landscapes of national or city level

Society involvement on a local level





...TO BE CONTINUED





THANK YOU!

