

Expertise and insight

for the future

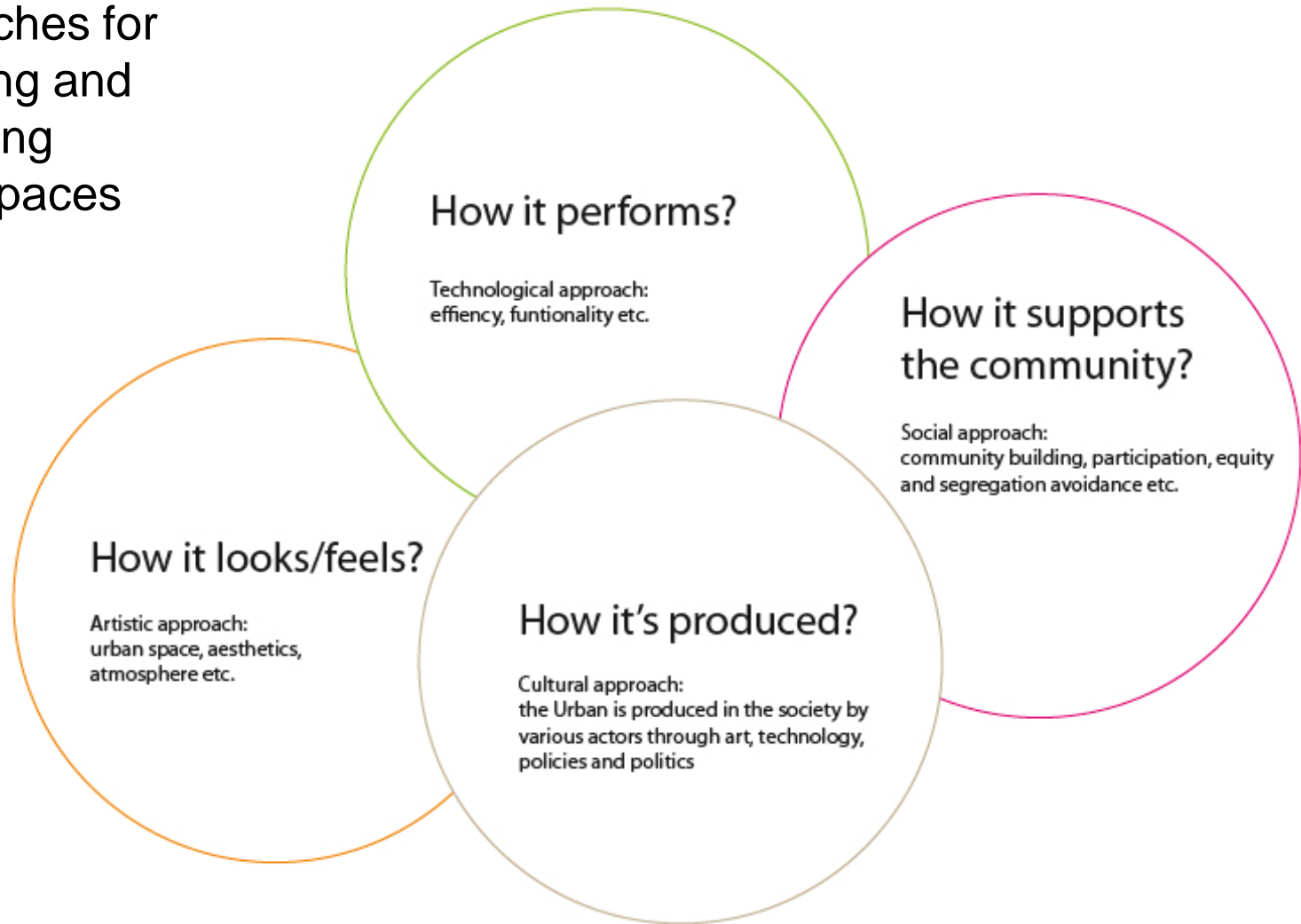
Live Baltic Campus Campus Areas as Labs for Participative Urban Design

VASAB Workshop on Urban Revitalization / Lodz
28th of October 2015 / Päivi Keränen / Project manager





Approaches for designing and evaluating urban spaces



Definition of approaches by Antti Lehto, Aalto University

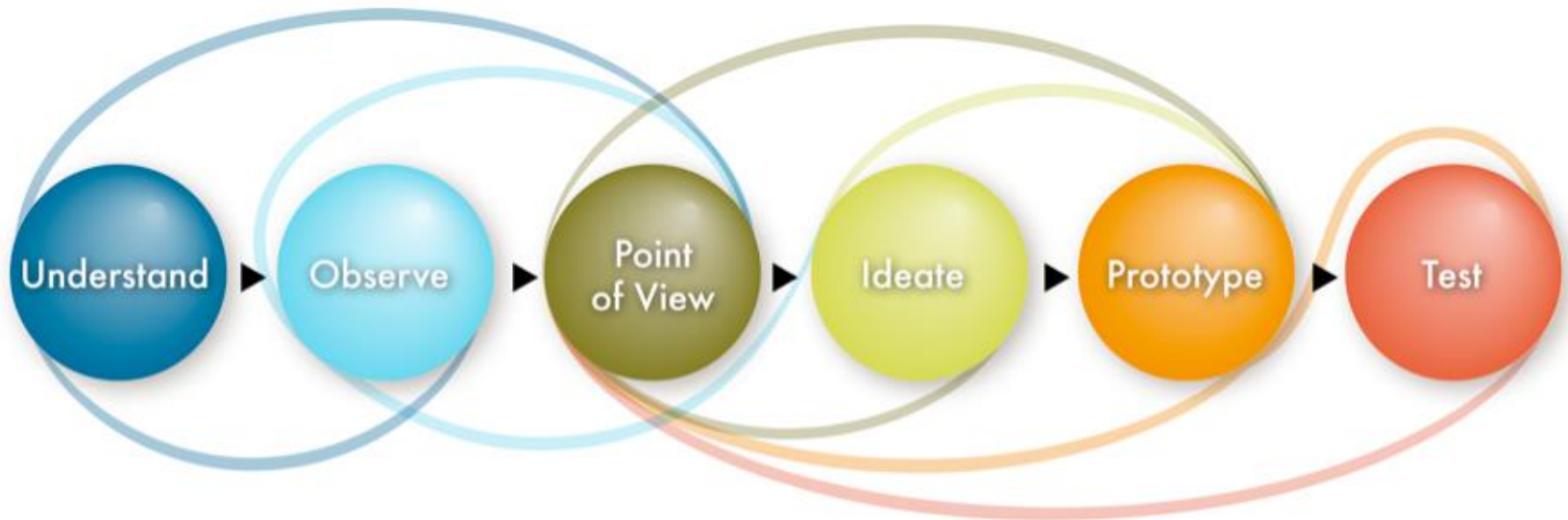


VS.



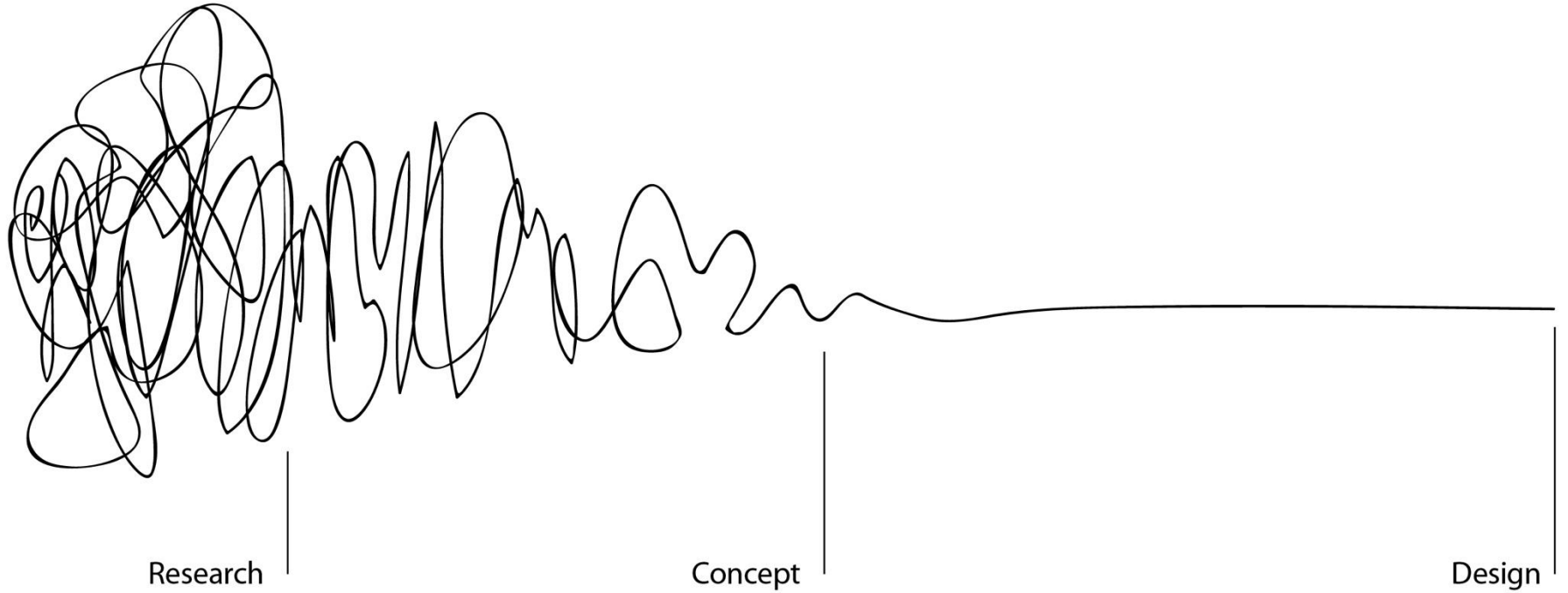
“Think of design less as a way of making things look certain way, and more as a way of getting things done.”

- Jon Kolko, 2014



Uncertainty / patterns / insights

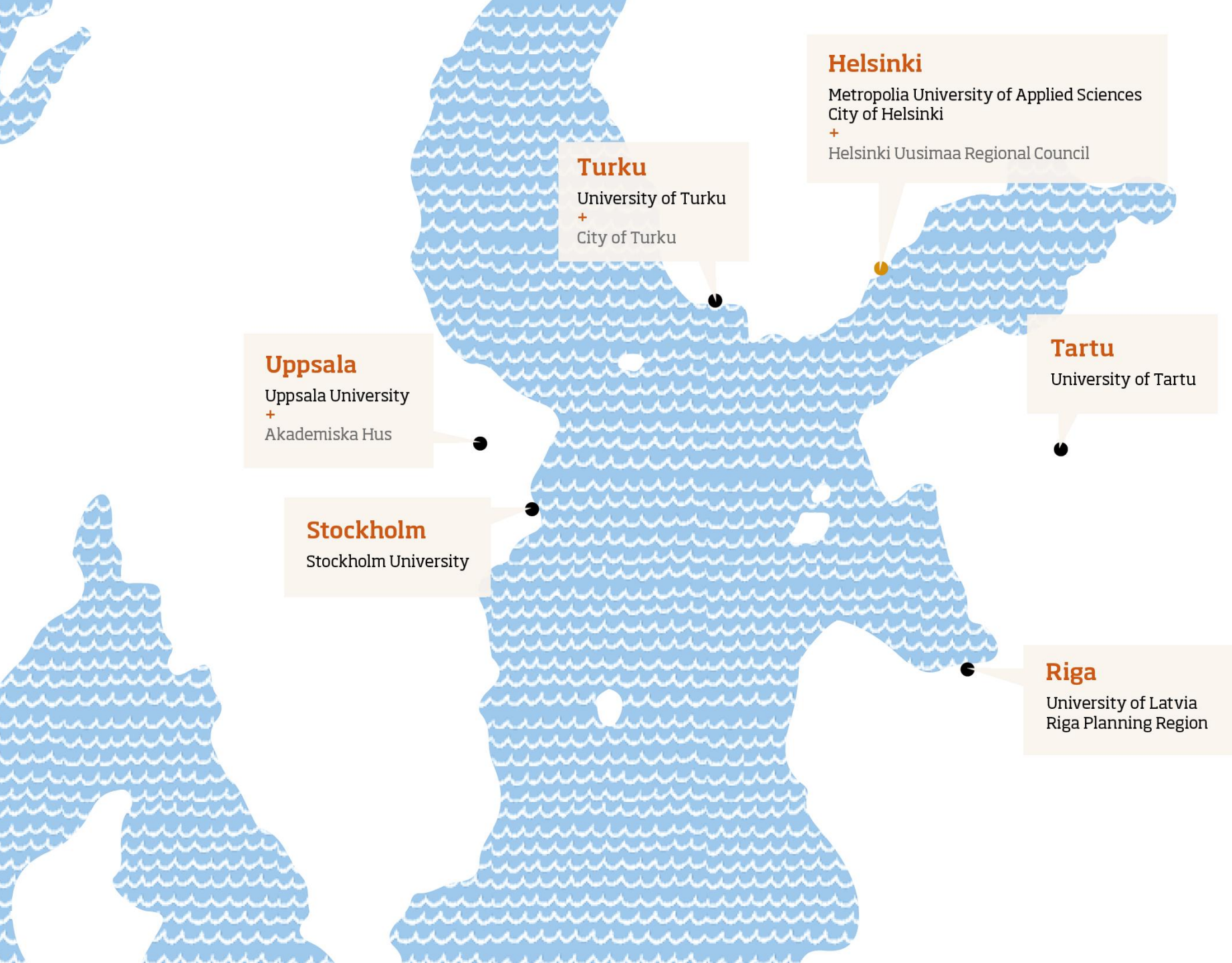
Clarity / Focus



Why campuses?

The role of universities is changing from being educators towards innovators and regional developers – and thus their physical and social locations as hubs of development is increasingly important in urban planning...





Helsinki
Metropolia University of Applied Sciences
City of Helsinki
+
Helsinki Uusimaa Regional Council

Turku
University of Turku
+
City of Turku

Uppsala
Uppsala University
+
Akademiska Hus

Stockholm
Stockholm University

Tartu
University of Tartu

Riga
University of Latvia
Riga Planning Region

Key Activities

- Four interregional **Livable City Forum** events to bring together city planners, property owners, designers, city dwellers etc.
- Regional pilot cases related to campus development, resulting into **integrated campus development** plans
- Testing and prototyping **design methods** in campus setting for urban development
- A study trip for pilot case developers

Integrated Campus Development Plans?

- **Integration of stakeholders** in a joint collaborative urban planning framework
- **Integration of campus development processes** with on-going or future city-planning activities
- **Spatial integration** of the campus area and its surrounding urban fabric

NOTE: The format is left a bit open to allow the regional stakeholder groups to make their own definitions based on local needs (e.g service concepts can be included).



“The common thread for all pilots is the utilization of **design methods** and the aim to develop campuses as innovation hubs by creating better urban environment for businesses and residents.”

PILOT CASE HELSINKI

Campus as a Hub for Well-being

- One of four Metropolia's future campuses; will host 6000 students from the fields of Health, Well-being, Social Services as well as Construction and Civil Engineering
- Located in Myllypuro, a residential area with brand and social problems, City has invested a lot of effort into rejuvenating the area
- A new campus, construction works will commence in 2016 and will finish in 2019
- **OBJECTIVE:** Myllypuro as a innovational hub for the Well-being and the services related
- Strengthening the collaboration between HEI's, City officials and SME's

PILOT CASE TURKU

Strengthening the Student City

- Regional co-creation of the ReadyStudyGoTurku (6 HEI's + the main Student Unions) - Design thinking allows equal and open participation to everyone
- There immense potential of 40 000 academic citizens living in the city
- More convenient regional development by creating places for collaboration and joint problem solving
- **OBJECTIVE:** a shared regional vision in the Integrated Campus Development Plan targeted for development for all the HEIs – to make the student city more liveable and integrated!

PILOT CASE TARTU

To the City Centre or to the Suburbs?

- What location for Campus is the most beneficial for the development of the city? For the cooperation with entrepreneurship and the public?
- A mobile tracking survey of students will be conducted to analyse the effect of the location of the place of residence, place of work and the school building on the usage of the urban space and transport. The aim is to find the most suitable solutions for entrepreneurship cooperation with start-ups and ITC companies.
- **OBJECTIVE:** Suggestions for city master plan and policy recommendations for Estonian government.

PILOT CASE RIGA

Tornakalna Campus as an Urban Hub

- A new University of Latvia campus as a local centre with the main functions (education and science) and support functions (dormitories, various services, facilities, high-quality public open space, etc.) The urban management integration of the campus and its integration with current and future transport system.
- **OBJECTIVE:** An epicentre of knowledge transfer, innovation and entrepreneurship:
 - To create systematic understanding of the outcomes and impact of HEI - Business cooperation, beyond the traditional R&D activities
 - To design a powerful, smart campus and partnership management strategy for the new campus of UL.

PILOT CASE UPPSALA

Participative Campus Uppsala

- Joint project, Campus Uppsala, with campus property owner to focus on the development of the university in the city and the common involvement of all stakeholders and development of a shared vision will be valuable in the regional development.
- Use of the IT based participatory tools and platforms within Live Baltic Campus will add to the involvement in the regional planning/development process.

PILOT CASE STOCKHOLM

Reflecting an Integrated Campus Plan

- Albano Resilient Campus is an inspirational example of integrative urban planning where the local community (HEI's, NGO's and professionals) created in a participative process a plan for campus area. The plan will now be implemented.
- In Live Baltic Campus Stockholm Resilience Centre will make a study of this process, identify the best practises and bring them into attention of other pilot cases

Live Baltic Campus in nutshell

KEY ACTIVITIES:

- Four interregional Livable City Forum events
- Regional pilot cases, resulting into integrated campus development plans
- Testing design methods for urban development

MAIN OBJECTIVES:

- Co-creation of integrated campus development plans
- Strengthening the collaboration in partner regions and on Central Baltic level
- Accumulation of knowledge and expertise on using participatory design methods for urban development

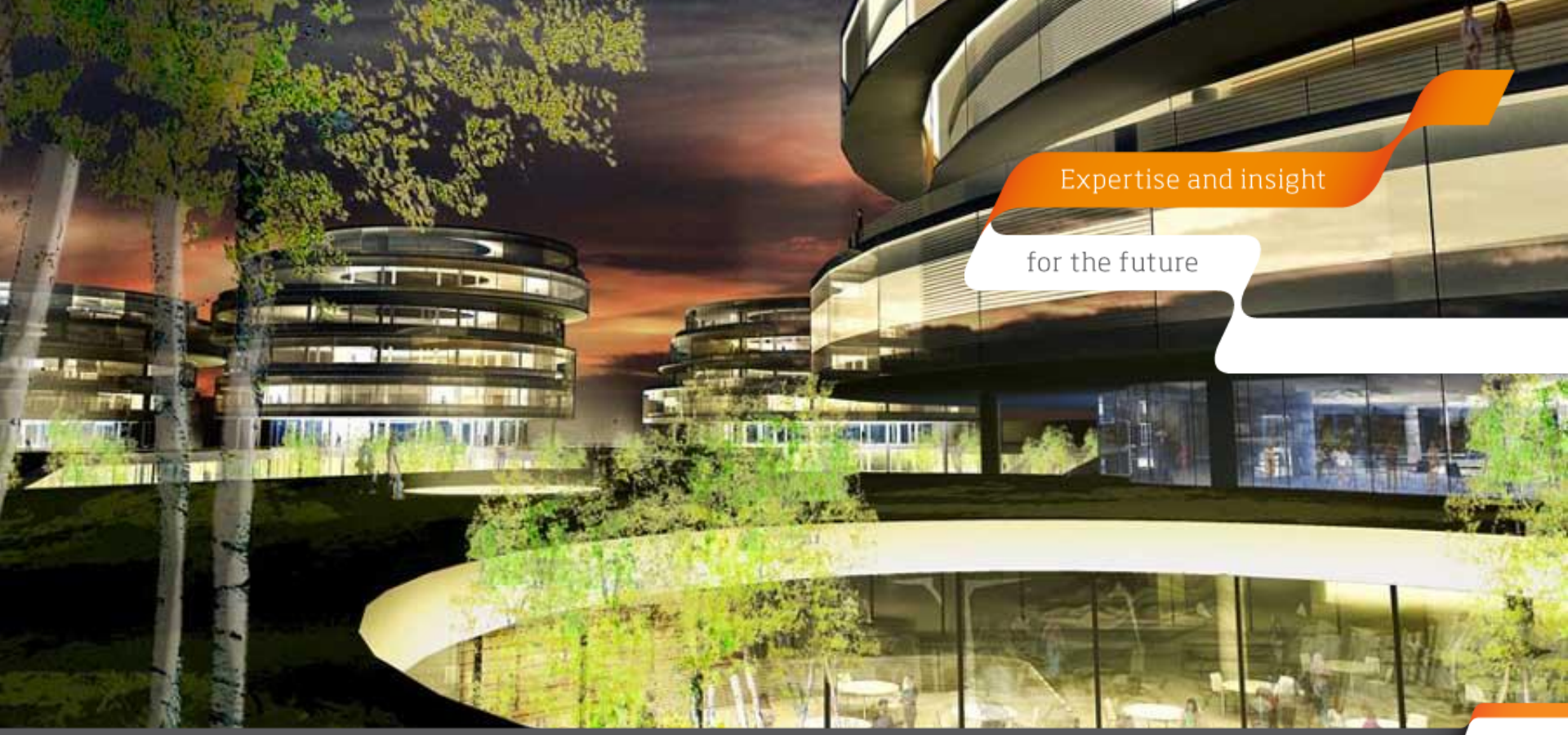


EUROPEAN UNION
European Regional Development Fund



PARTNERS





Expertise and insight

for the future

Thank you!

www.metropolia.fi/en

www.facebook.com/MetropoliaAMK

paivi.keranen@metropolia.fi