



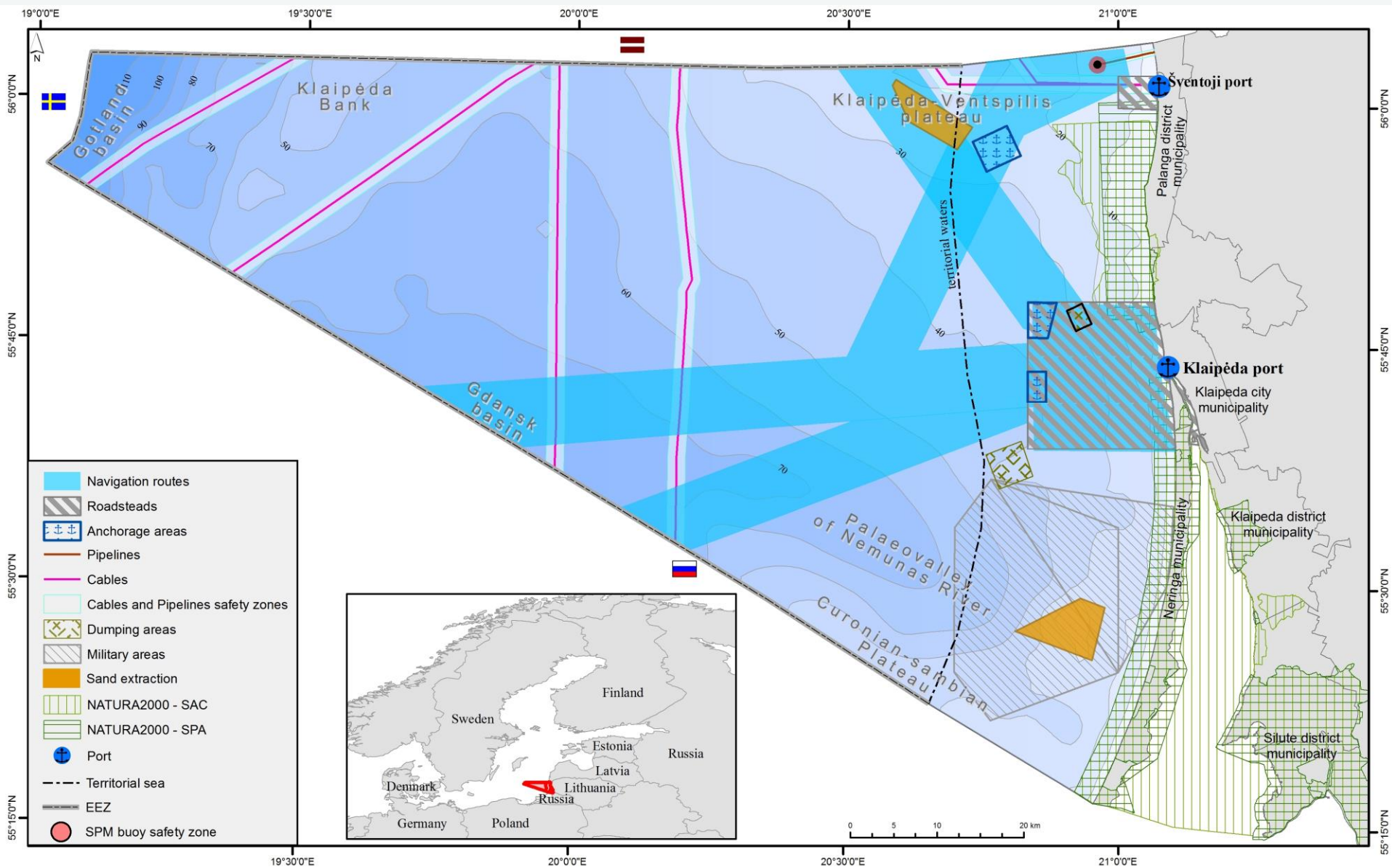
Extension of General Plan of Republic of Lithuania with marine solutions

N.Blažauskas, CORPI
RIGA, 2014 June 17



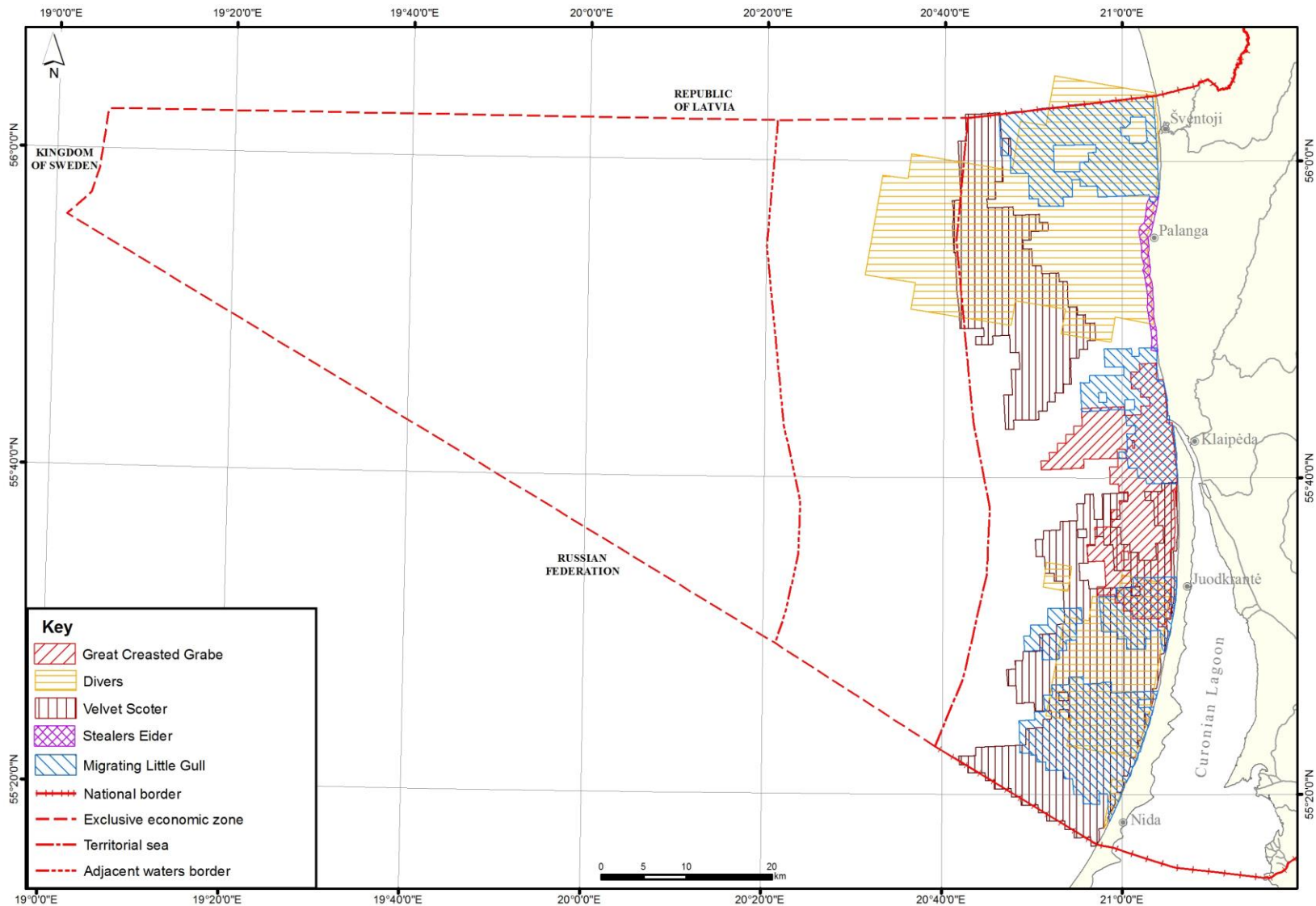
- Stocktaking of existing uses and strategic priorities
- Mapping of natural/cultural assets & natural resources
- Identification of future trends and demand for marine space
- Preparation of the Concept for spatial distribution of maritime activities
- Creating the conditions for Ecological Balance
- Reserve areas for strategic national needs
- Prioritizing and Regulation of use and developments at the sea

Stocktaking:

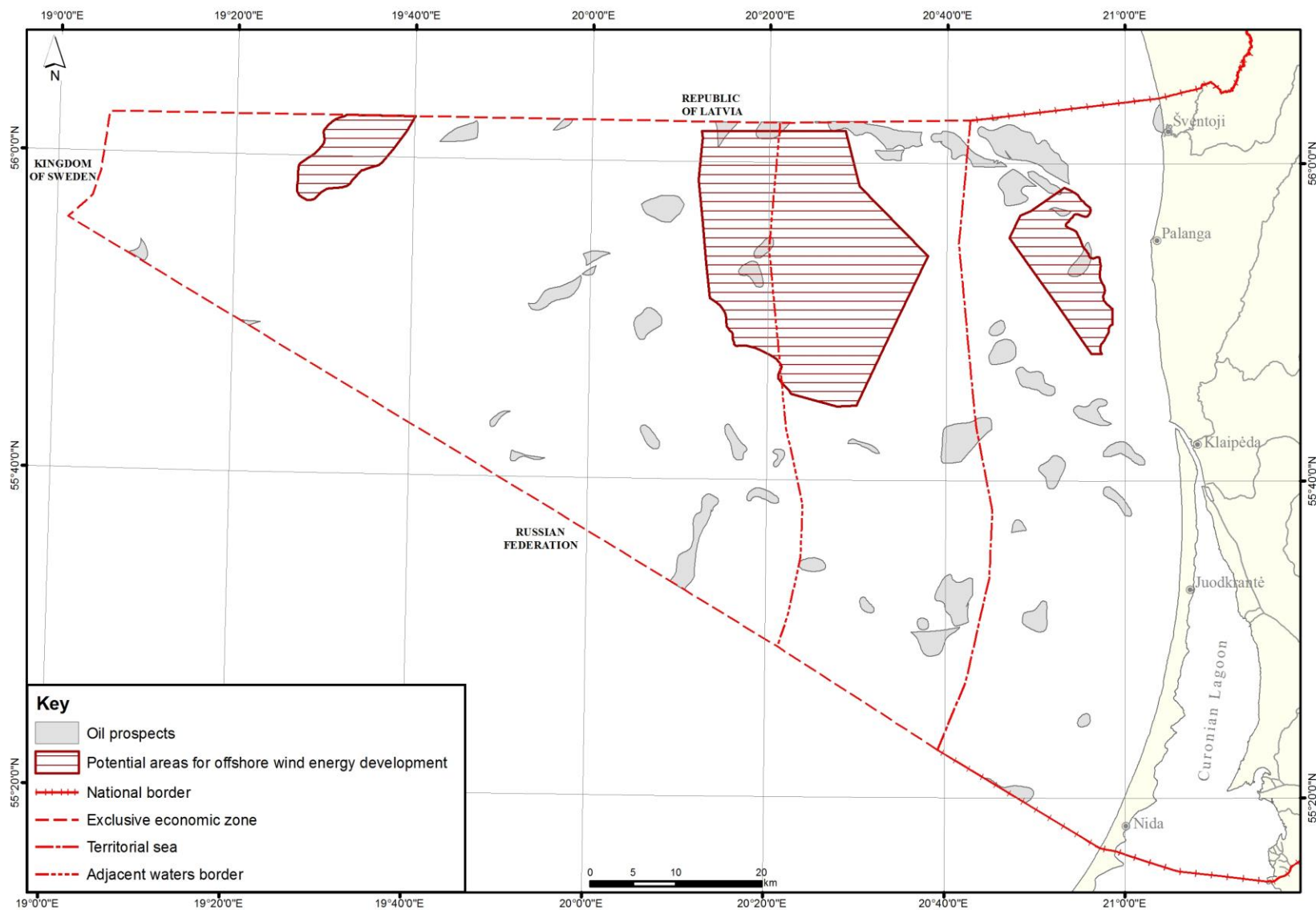


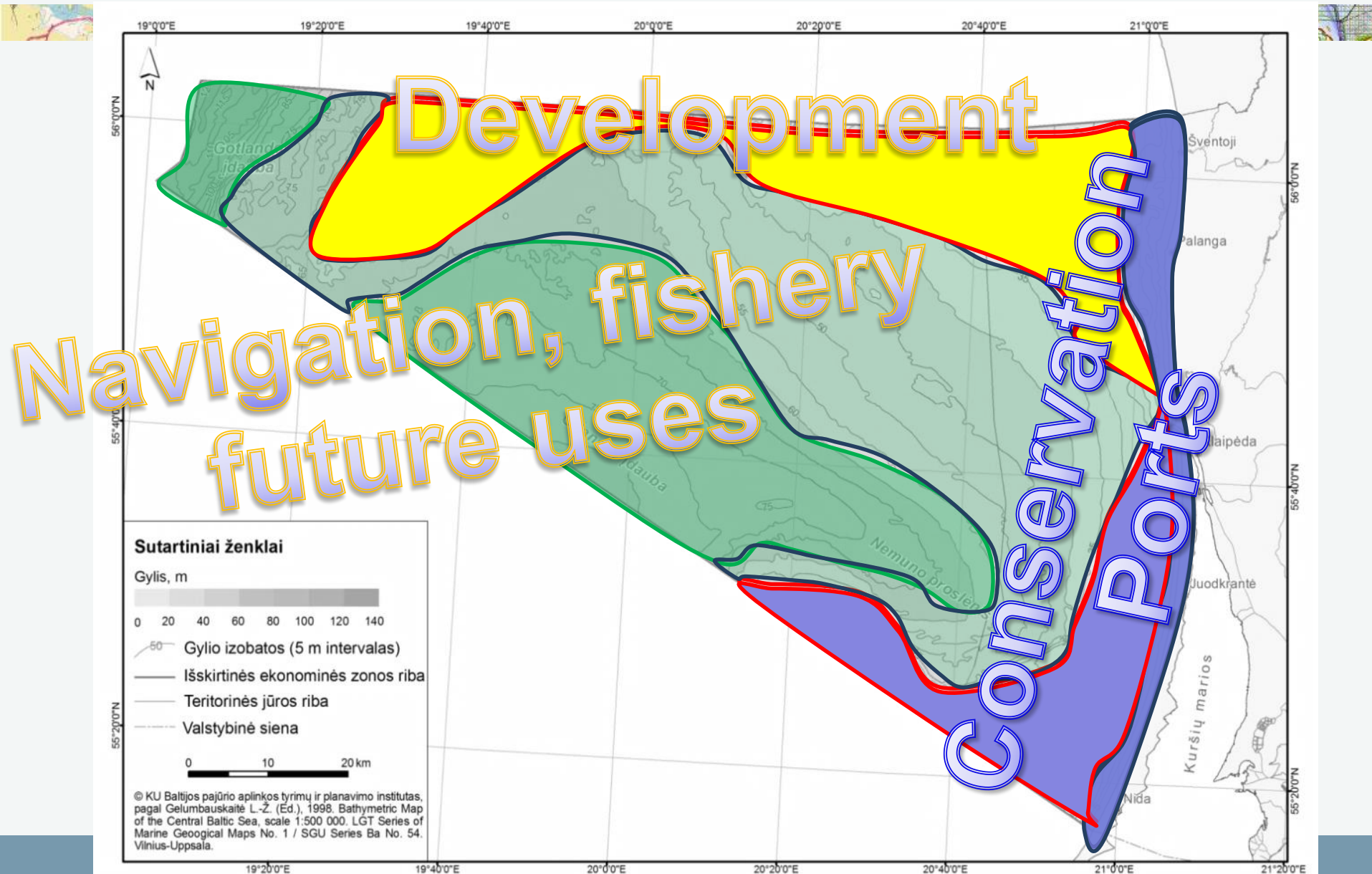


Mapping of assets:



Mapping of resources:

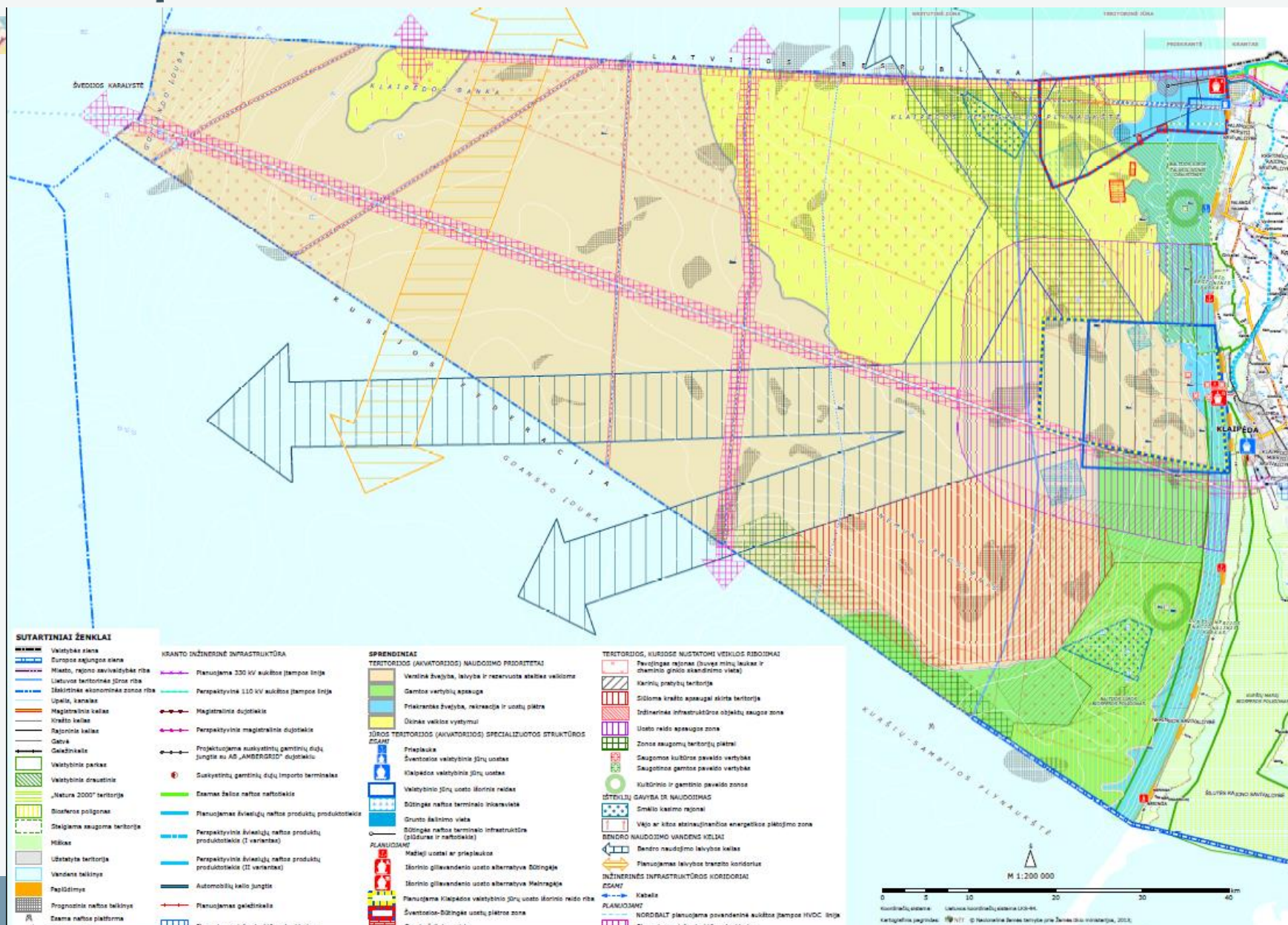


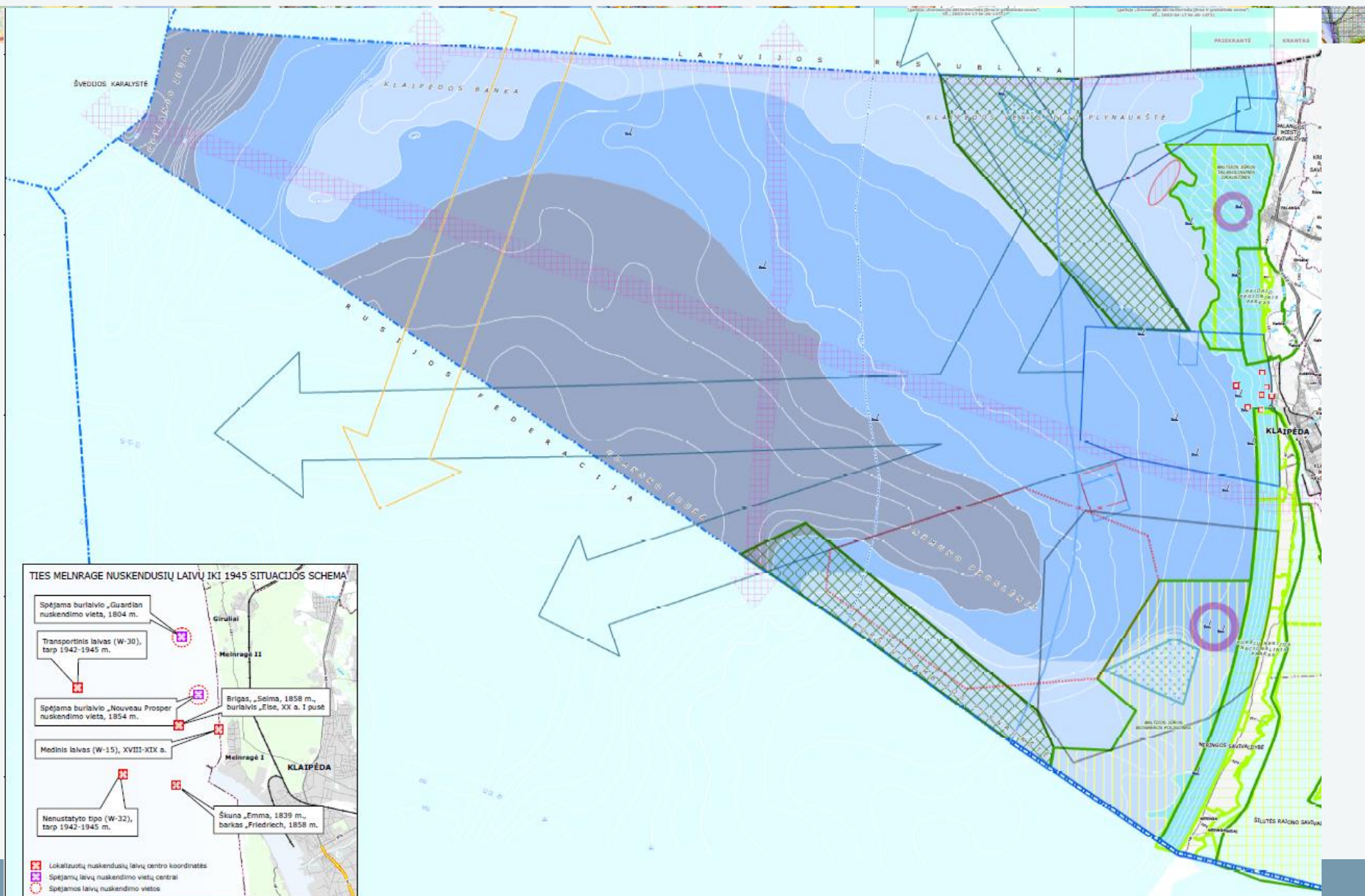


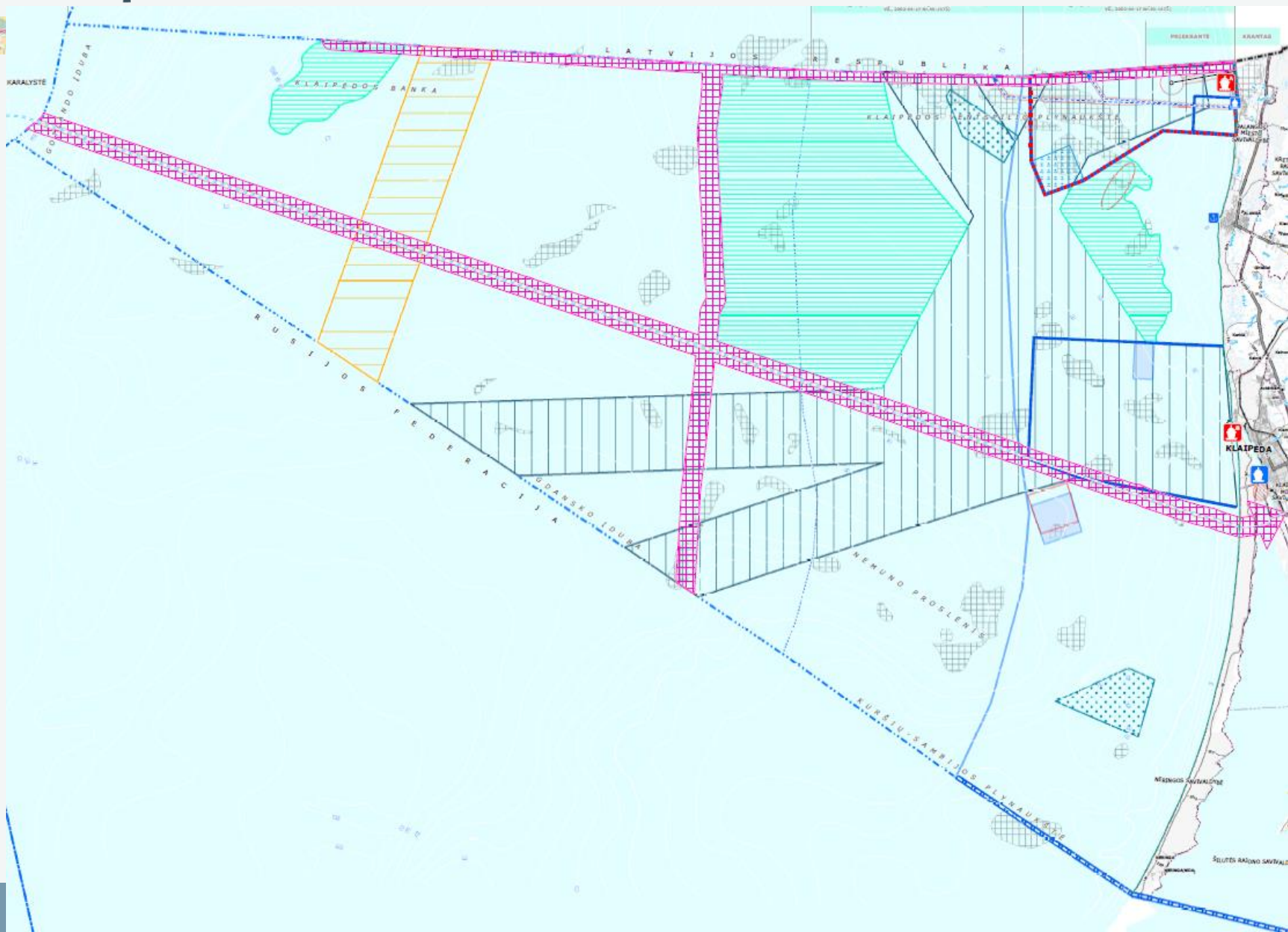
Concept SEA:

COCEPT solution		Assessment of the alternative	Proposed corrections after SEA
Alternative A	Alternative B		
Infrastructure development			
To use existing infrastructure lines as corridors for other cables and power lines development in future.		Use of existing corridors allows to minimize the impact and limitations for other activities. Development of OWE in Baltic sea region requires the common integrated grid development in order to connect the parks.	To use existing/known cable lines as corridors for other/future/planned cables and power lines development. Foresee corridors for integrated Baltic Sea Region electricity grid.
Exploration and exploitation of natural resources			
Marine area of EEZ and TW is divided into zones for oil exploration and exploitation after the all necessary procedures for deposit exploration, resource evaluation and EIA are in place. Other mineral resources, including sand and gravel, needed for port and other developments can be used when all necessary procedures for deposit exploration, resource evaluation and EIA are in place. Mineral resource exploitation is not allowed in the nearshore.		There is no economic evaluation of the potential oil resource. Exploitation would have an impact to all environmental components and is subject of EIA study. Exploration of the resource is important strategically.	Oil exploration, oil and other mineral resource exploitation is allowed in EEZ and TW except near shore zone after the all necessary procedures for deposit exploration, resource evaluation and EIA are in place.
Energy generated from renewable sources transmission is carried out through established infrastructure corridors.		The connection of the OWE parks through established infrastructure corridors minimizes the impact but need to be adopted to the needs of each particular park.	Energy generated from renewable sources transmission should be preferably carried out through established infrastructure corridors. Other cabling lines can be developed taking into account marine use and nature protection requirements.
Sand from existing marine sources can be used for the coastal protection purposes only.		Marine sand is the only suitable resource for beach replenishment and is important for good status of the coast.	Sand from existing marine sources can be used for the coastal protection purposes only.
OWE priority zone is Klaipėda Ventspils plateau and Klaipėda Bank at the depths of 20-50 m. Except nature protection, navigation corridors, roadsteads, dumping and sand extraction zones. Developments should follow the EIA procedure.	OWE developments are allowed in depths of 20-50 m. Except nature protection, navigation corridors, roadsteads, dumping and sand extraction zones. Developments should follow the EIA procedure.	The main possible impact is to the biodiversity, landscape, cultural heritage. OWE developments in southern part of EEZ could have the impact on Curonian spit.	OWE priority zone is north part — Klaipėda Ventspils plateau and Klaipėda Bank at the water depths of 20-50 m.

Common Spatial Concept:











PRIORITIES FOR AREA USE

 Limit of the priority area

 Index for regulations of use

Number of zone	First priority group
	Second priority group

Areas for water economy

H₁ – economics

H₂ – recreation

H₃ – ecosystem conservations

Other activities

I₁ – exploitation and development of communication and infrastructure objects

I₂ – communication and infrastructure corridors

I₃ – use of renewable energy resource

N – exploration of mineral resources

N₁ – dumping

A – national defence

Functional regions

1 – decentralized development

2 – use of renewable energy resource

3 – shipping

4 – military training & ecosystem conservation

5 – mixed purpose

6 – port development

7 – protection of coastal ecosystem



Thank you,
N.Blažauskas, CORPI
nb@corpi.lt