



opportunities MSP : ~~challenges~~ for ICES

Anne M. Cooper, Ph.D.

International Council for the Exploration of the Sea

- A global organization for enhanced ocean sustainability.
- A network of 4000 scientists from 300 institutes
- Established in 1902 to:
 - Coordinate & promote marine science
 - Collect & maintain marine data for shared use
 - Provide science-based advice on marine issues
- Membership: all coastal states in the north Atlantic









«THE CASE FOR MARITIME
SPATIAL PLANNING:
efficient resource management for
sustainable growth»

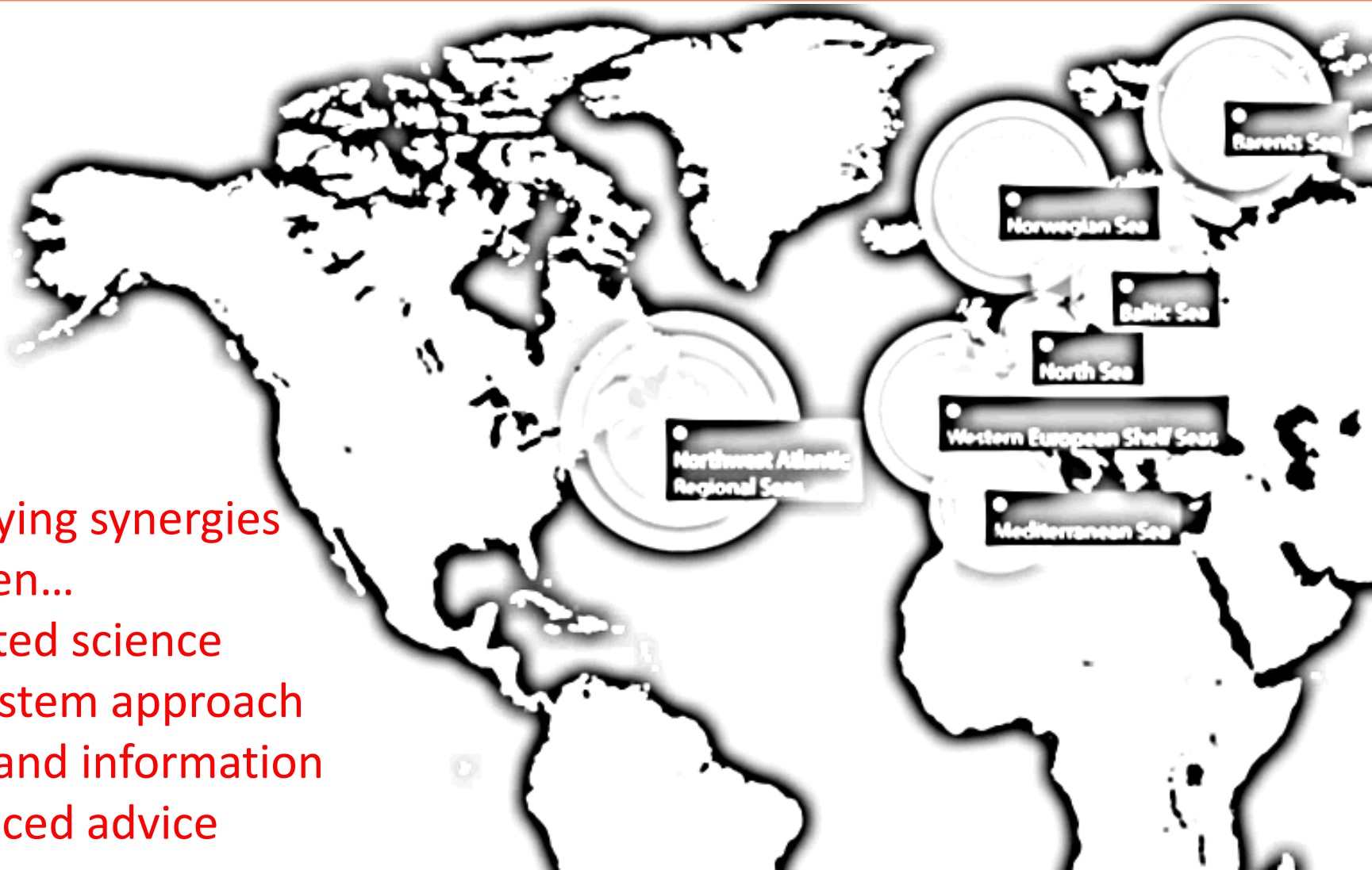
26 MARCH 2012
BRUSSELS




ICES and MSP

Identifying synergies between...

- Directed science
- Ecosystem approach
- Data and information
- Practiced advice





A global organization providing sound and applied science and contributing to the policy framework of sustainable management of the marine environment.

Marine Spatial Planning

- A key focus area for ICES going forward.

Transparent provider of non-political scientific advice

Hosts spatially-explicit marine data

ICES and MSP

- 2009 ICES Science and Advisory Plans - MSP key area for research and activity
- 2010 ICES Strategic Initiative on MSP ([STIGMSP](#))
Lisbon MSP Workshop
- 2011 Lisbon MSP Workshop *Joint HELCOM/VASAB, OSPAR and ICES*
[MSP Challenge](#) (simulation game)
Working Group for Marine Planning and Coastal Zone Management ([WGMPCZM](#))
Annual Science Conference [Theme Session](#) --Multidisciplinary perspectives in the use (and misuse) of science and scientific advice in MSP
ICES/[COEXIST](#) Workshop (best practices for MSP)
- 2013 *Marine and coastal ecosystem-based risk assessment* [ICES CRR317](#)
Managing fisheries in Baltic Marine Protected Areas ([BALTFIMPA](#)) Stakeholder Workshop

ICES [Spatial Facility](#)

- Working Group on Marine Benthic and Renewable Energy Developments ([WGMBRED](#))
- Joint HZG/LOICZ/ICES Workshop: Mapping Cultural Dimensions of Marine Ecosystem Services ([WKCES](#))
- Proposed fisheries measures for the Dogger Bank Special Area of Conservation ([Dogger Bank](#))
- Managing Fisheries in Baltic Marine Protected Areas 2013 [FIMPAS](#)
- Environmentally Sound Fisheries Management in Marine Protected Areas [EMPAS](#)
- Proposed fisheries measures for the Cleaver Bank Special Area of Conservation ([Cleaver Bank](#))
- Workshop on Fisheries Management in Marine Protected Areas ([WKFMMPA](#))
- Report of the Ad hoc Group for Western Irish Natura Sites ([AGWINS](#))
- Study Group on Spatial Data ([SGSPATIAL](#))

STAGES VMS data call

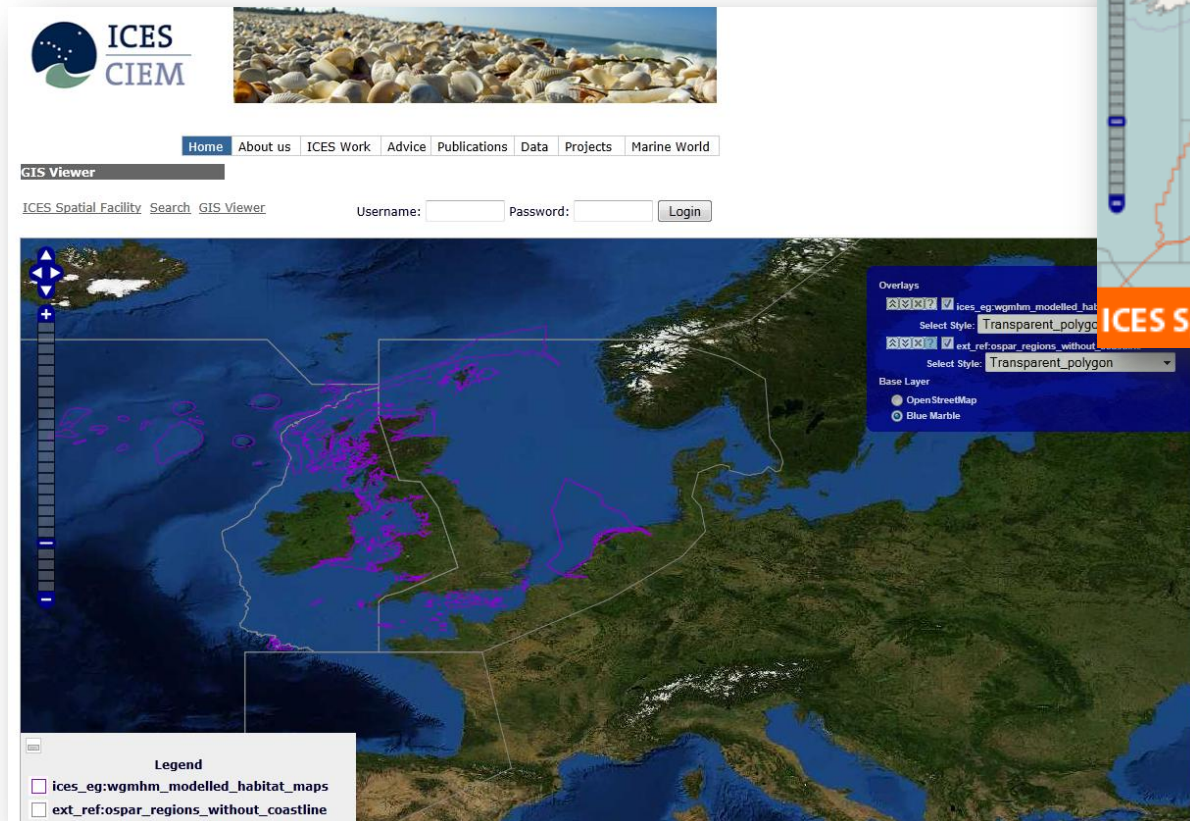
- [WGMPCZM](#) [WKQAMSP](#)
- [WKRASM](#) [WKCES](#)
- [WKMCMS](#)

ICES MSP Activities

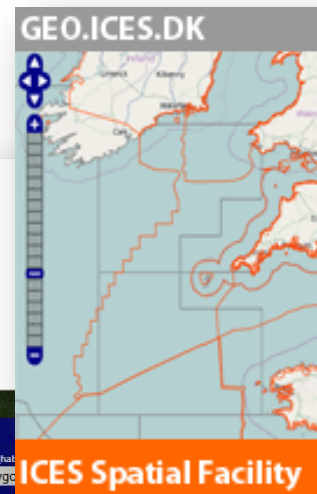


ICES Spatial Facility

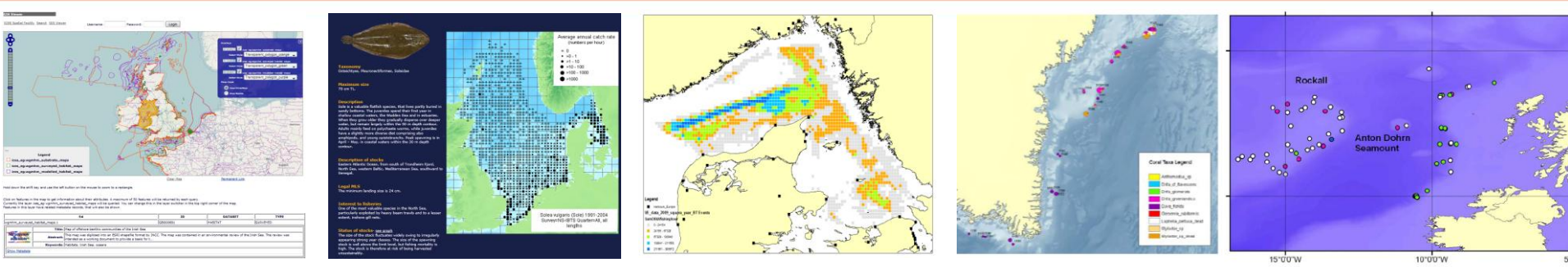
Spatial data infrastructure to support ICES area-based science and marine spatial planning initiatives



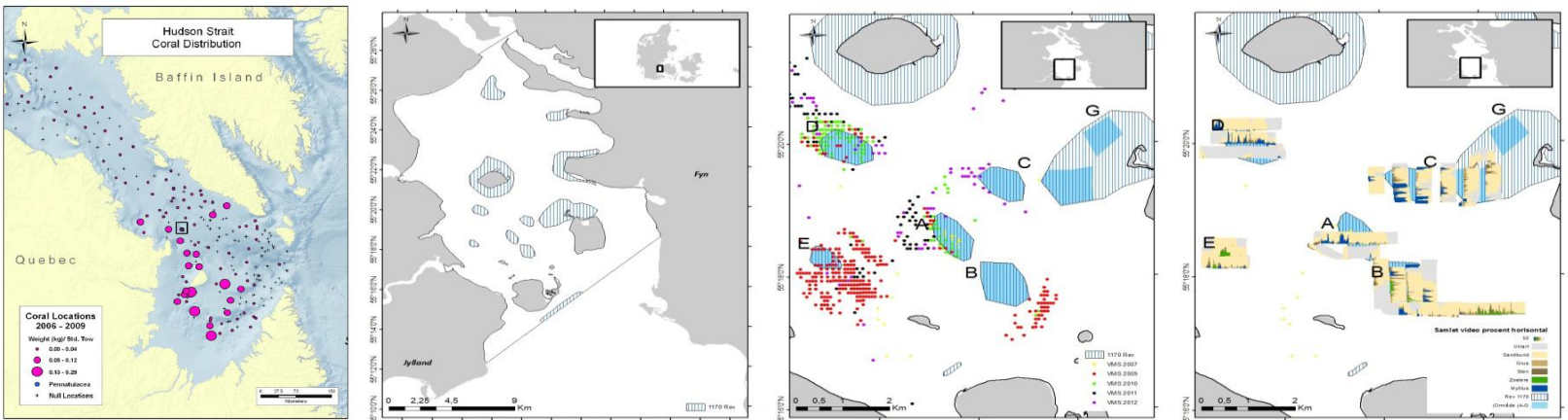
The screenshot displays the ICES Spatial Facility GIS Viewer interface. At the top left is the ICES CIEM logo. A navigation menu includes links for Home, About us, ICES Work, Advice, Publications, Data, Projects, and Marine World. Below the menu is a search bar and a login section with fields for Username and Password, and a Login button. The main area features a satellite map of the North Atlantic and Arctic regions, overlaid with magenta and white polygons representing marine spatial planning data. A legend in the bottom left corner identifies the layers: 'ices_eg:wgmhm_modelled_habitat_maps' (magenta polygon) and 'ext_ref:ospar_regions_without_coastline' (white polygon). On the right side, an 'Overlays' panel allows users to toggle and style the data layers, with 'Transparent_polygon' selected for both. The 'Base Layer' section offers 'OpenStreetMap' and 'Blue Marble' options. A vertical scale bar and navigation controls are visible on the left side of the map.



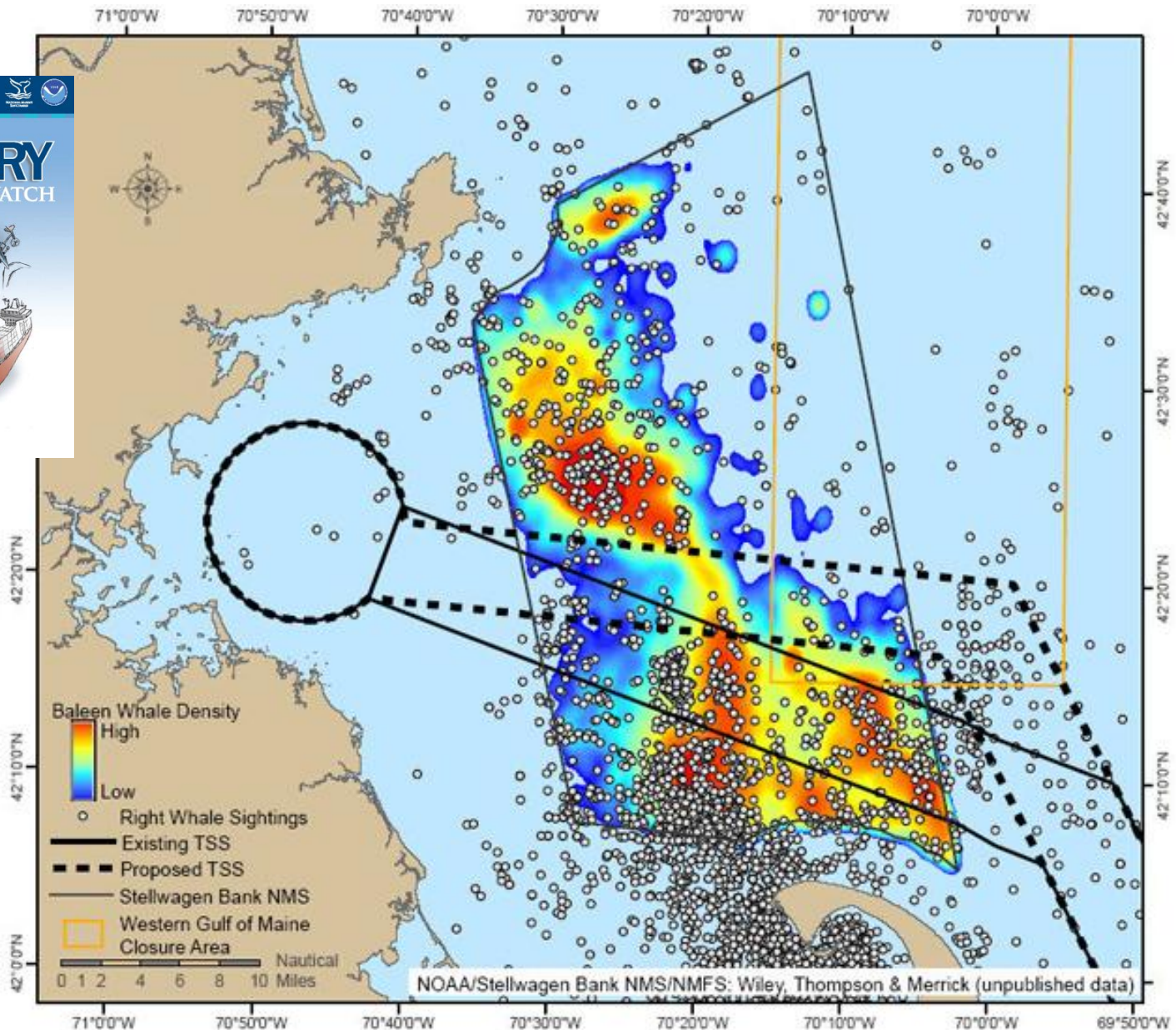
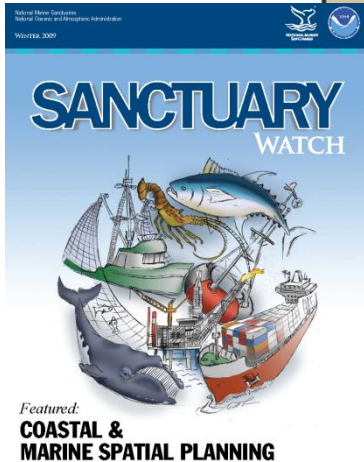
ICES Spatial Facility



- Publically available spatially-explicit data supports informed decision-making
- Free and open access
- Massive potential for spatial data in the ICES network



Science and spatial data for successful MSP



Building the foundation with a multi-layered approach

Integrated ecosystem assessments

Ecosystem overviews

Regional level for regional priorities

Dynamic

Iterative

Moving beyond short-term, single-issue advice

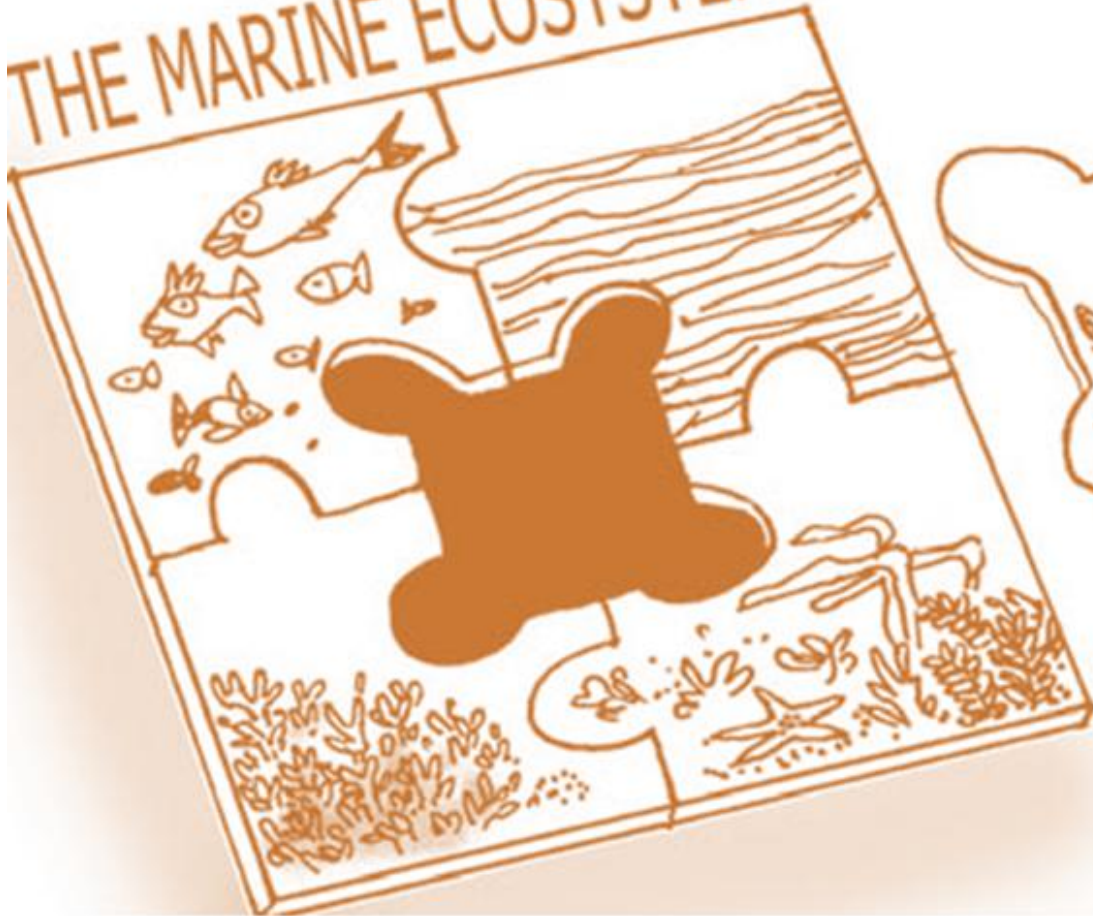
Facilitate the availability and use of spatial data

Build network's capacity to fulfill ICES mission to:

- Coordinate & promote marine science
- Collect & maintain marine data for shared use
- Provide science-based advice on marine issues

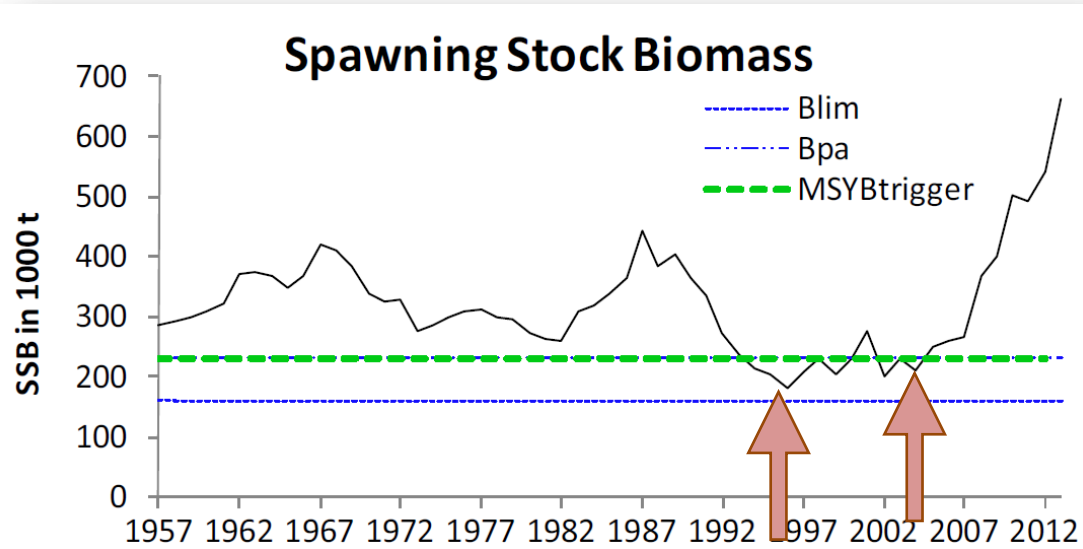
ICES – building capacity

THE MARINE ECOSYSTEM



Thank you

The Plaice Box 1995



No robust baseline
No monitoring

Unforeseen:

- Changes to fleet behaviour
- Environmental change

