



EMODnet

The European Maritime Observation and Data Network

EMODnet - Human Activities

VASAB - MSP Data Expert Sub-Group

Hamburg 19 January 2016

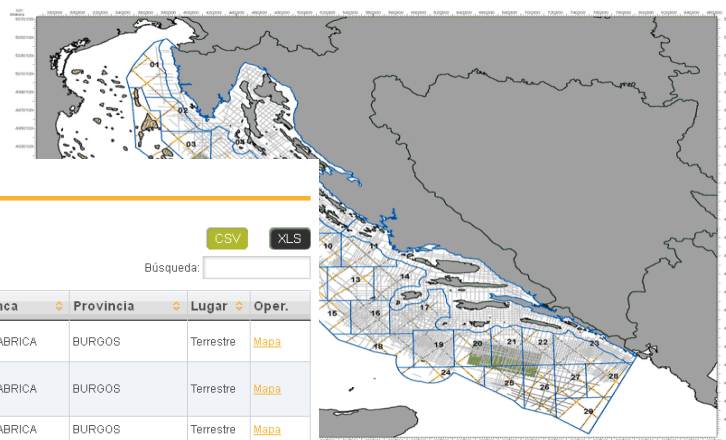
How it was



European Commission

Offshore Data Room officially opened on 10th of March 2014. In the offshore data room you can see approximately 26.000 km² legacy seismic data, 3.000 km² of 2D recently (2013) acquired data, approximately 3.300 km² (three volumes) 3D acquired in 1997/1998 and approximately 800 km² of 2D and 1.300 km² 3D acquired in 2012 together with 51 wells.

Selected Offshore data viewable in Data Room:



leis!

CHOIX DES COUCHES

- Catalogue Info Terre
- Carrières et matériaux
- Cartes géologiques
- Cartes topographiques
- Données Eaux
- Données Eaux - Masses
- Données pétrolières
- Forages pétroliers
- Dossiers du sous-sol BSE

Géocatalogue
Serveur OGC

SRS: Lambert 93

Resultado de la Búsqueda de Sondeos

Mostrar: 25 resultados por página

Búsqueda:

[CSV](#) [XLS](#)

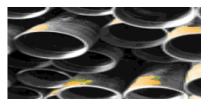
Conf.	Nº Sondeo	Nombre	Tipo Sondeo	Permiso	Cuenca	Provincia	Lugar	Oper.
	001	TUDANCA-1	Principal	PERIMETRO SUR DEL EBRO	CANTABRICA	BURGOS	Terrestre	Mapa
	002	ZAMANZAS-1	Principal	PERIMETRO NORTE DEL EBRO	CANTABRICA	BURGOS	Terrestre	Mapa
	003	ZAMANZAS-2	Principal		CANTABRICA	BURGOS	Terrestre	Mapa
	004	ZAMANZAS-3	Principal		CANTABRICA	BURGOS	Terrestre	Mapa
	004B	BUJALANCE-1	Principal	CORDOBA	DEL GUADALQUIVR	CÓRDOBA	Terrestre	Mapa
	005	OLIANA-1	Principal	OLIANA	RIOJA- EBRO	LLEIDA	Terrestre	Mapa
	006	CHICLANA-1	Principal	CHICLANA	CORDILLERAS BÉTICAS	CÁDIZ	Terrestre	Mapa
	007	PEÑA ORTUN-1	Principal		CANTABRICA	BURGOS	Terrestre	Mapa
	008	BURGO DE OSMÁ-1	Principal	BURGO DE OSMÁ	DUERO-ALMAZAN	SORIA	Terrestre	Mapa
	008B	BUJALANCE-2	Principal	CORDOBA	DEL GUADALQUIVR	CÓRDOBA	Terrestre	Mapa
	009	LA MARINA-1	Principal	HURCHILO	MURCIA-ALMERIA	ALICANTE/ALACANT	Terrestre	Mapa
	009B	BUJALANCE-3	Principal	CORDOBA	DEL GUADALQUIVR	CÓRDOBA	Terrestre	Mapa
	010	DOBRO-1	Principal	PERIMETRO SUR DEL EBRO	CANTABRICA	BURGOS	Terrestre	Mapa

You are here: Forside » Oil and gas » Oil and gas related data

- Data
- GIS map
- Monthly and yearly production
- Seismic surveys
- Wells

Wells

Monthly Drilling Overviews and 2013



Wells drilled in the subsoil follows:

Exploration and appraisal wells drilled mapped structure contains oil and of the accumulation.

Development wells drilled to recover oil and gas from the accumulations. This group of wells comprises both production wells and injection wells. Injection wells are used to inject water or gas into the fields to drive the oil towards the production wells.

Monthly Drilling Overviews:	Wells 1935 - 2013
April 2015	All deep wells
March 2015	Exploration and appraisal wells
February 2015	
January 2015	
January-December 2014	
January-December 2013	

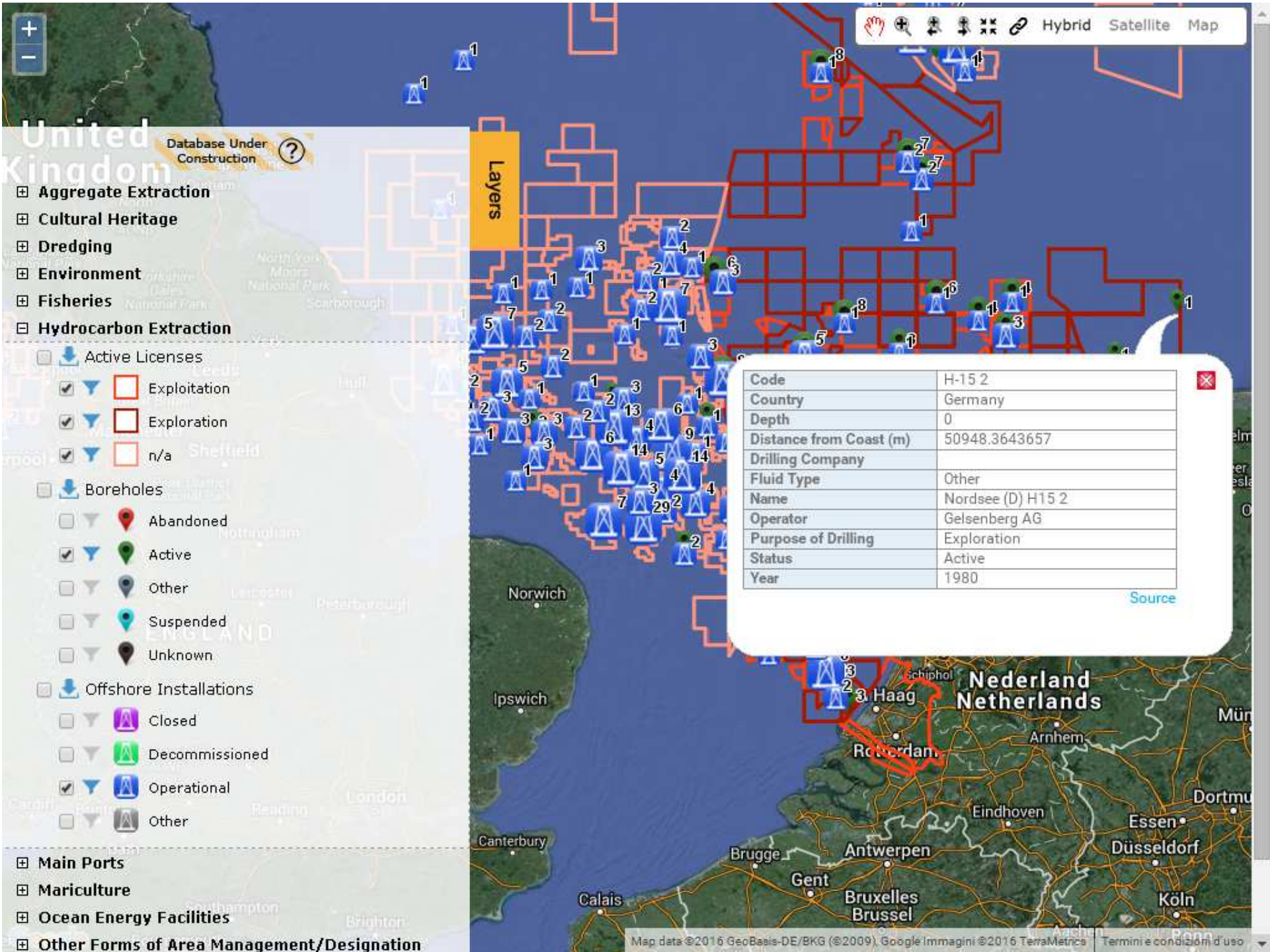
Divisão para a Pesquisa e Exploração de Petróleo

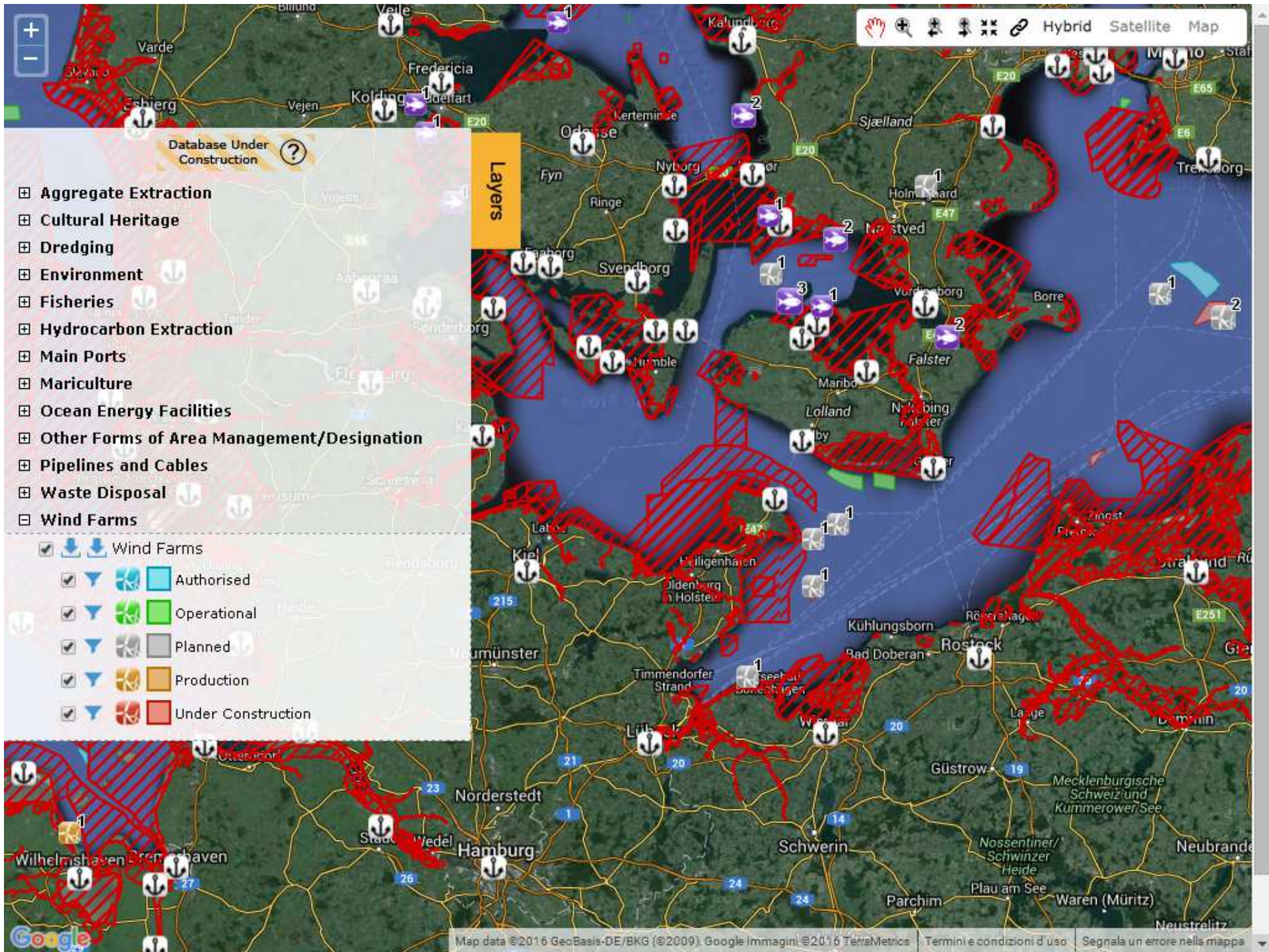
Avenida da República 45, 5º Esq.
1050-187 Lisboa
Telef.: +351 217 922 799
Fax: +351 217 954 926

MAPAS:

- [Autocarros](#)
- [Metropolitano](#)









Search Data

[Search Again](#)

Boreholes

This facility provides free access to GIS data on European marine boreholes. View the marine borehole data on an interactive map of Europe and search borehole sites and locations. Alternatively, download Esri compatible GIS files (Geodatabase or Shapefile). Datasets are also available via OGC compliant web feature service (WFS) or web map services (WMS). The metadata featured here can be downloaded as XML.

[View Data](#) | [Download Data](#) | [Download MetaData](#) | [WFS Link](#) | [WMS Link](#)

EMODnet Human Activities: Offshore Hydrocarbon Extraction

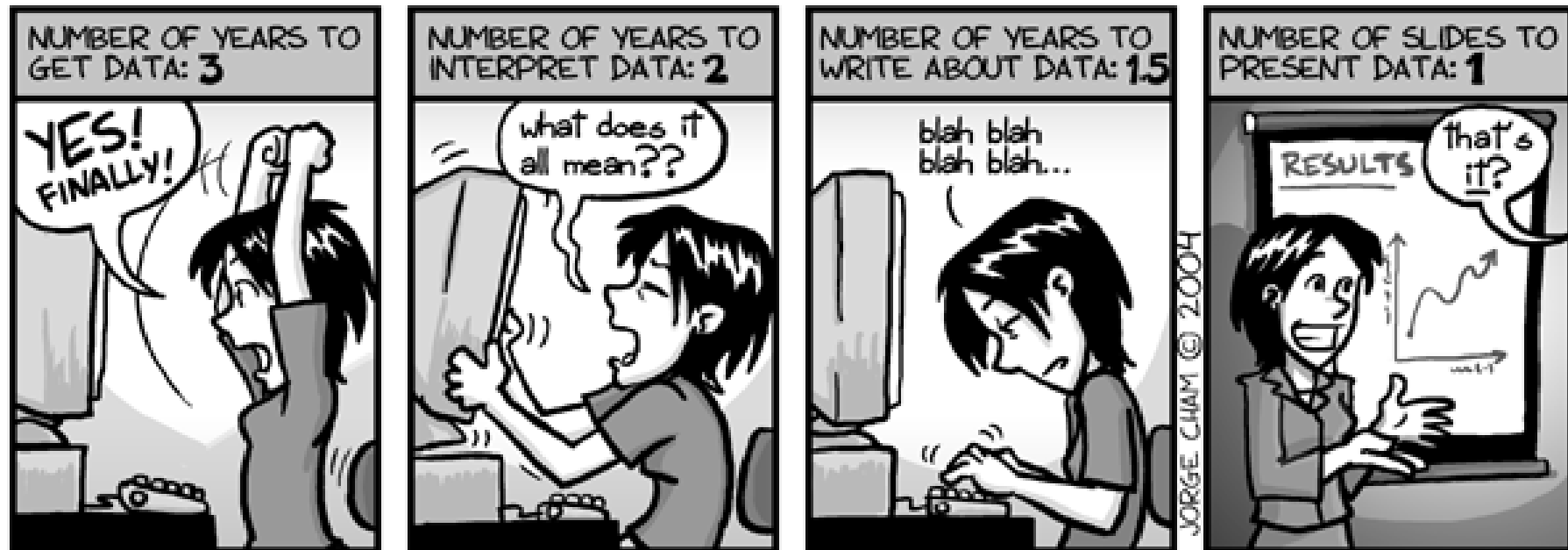
- [Resource Identification Information](#)
- [Data Quality Information](#)
- [Distribution Information](#)
- [Metadata Information](#)

Resource Identification Information

ABSTRACT

The geodatabase on offshore hydrocarbon extraction in the EU was created in 2014 by Cogea for the European Marine Observation and Data Network (EMODnet). It is the result of the aggregation and harmonization of datasets provided by several sources from all across the EU (plus Norway). It is updated every six months, and is available for viewing and download (data on Germany are available only for viewing) on EMODnet - Human Activities web portal (www.emodnet-humanactivities.eu). The database contains points representing offshore hydrocarbon boreholes drilled in the following countries: Croatia, Cyprus, Denmark, France, Germany, Greece, Ireland, Italy, Latvia, Malta, Montenegro, Netherlands, Norway, Poland, Portugal, Spain, and UK. Each point has the following attributes: status (active, abandoned, suspended, unknown, other), country, code, name, year (spud date), purpose (exploration, exploitation, other, unknown), fluid type (oil, gas, oil and gas, other, unknown), operator, drilling company,

DATA: BY THE NUMBERS



www.phdcomics.com

Principles



- ➔ **It's not a new data collection:** we're simply pooling together existing resources
- ➔ **Providing harmonised and interoperable data**
- ➔ **Data should stay where they are:** no centralised database
- ➔ **Data should be free and free of any restrictions**
- ➔ **Privileging public sources**

Next steps



- ➔ **Get to be known!**
- ➔ **Completing data collection**
- ➔ **Collecting feedback from stakeholders**
- ➔ **Improving layout and fine-tuning the website**
- ➔ **Securing data collection through memorandum of understandings with data sources**





Thanks for your attention!

Remember to visit us at www.emodnet-humanactivities.eu, and leave your feedback

Key contacts:

Cogea:	<i>Alvise Bragadin</i>	e-mail: a.bragadin@cogea.it
	<i>Alessandro Pititto</i>	e-mail: apititto@cogea.it
	<i>Luigi Falco (GIS coordinator)</i>	e-mail: lfalco@cogea.it
AND:	<i>Dominique Aviat</i>	e-mail: dominique.aviat@and-international.com
AZTI:	<i>Javier Franco</i>	e-mail: jafranco@azti.es
CETMAR:	<i>Rosa Chapela</i>	e-mail: rchapela@cetmar.org
Eurofish:	<i>Anca Sfetcovici</i>	e-mail: anca.sfetcovici@eurofish.dk
Lovell Johns:	<i>Wil Adnams (GIS coordinator)</i>	e-mail: wil.adnams@lovelljohns.com

