

EMODnet

The European Maritime Observation and Data Network

Lot 7 – Human activities

www.emodnet-humanactivities.eu

June 2014

What is EMODnet?



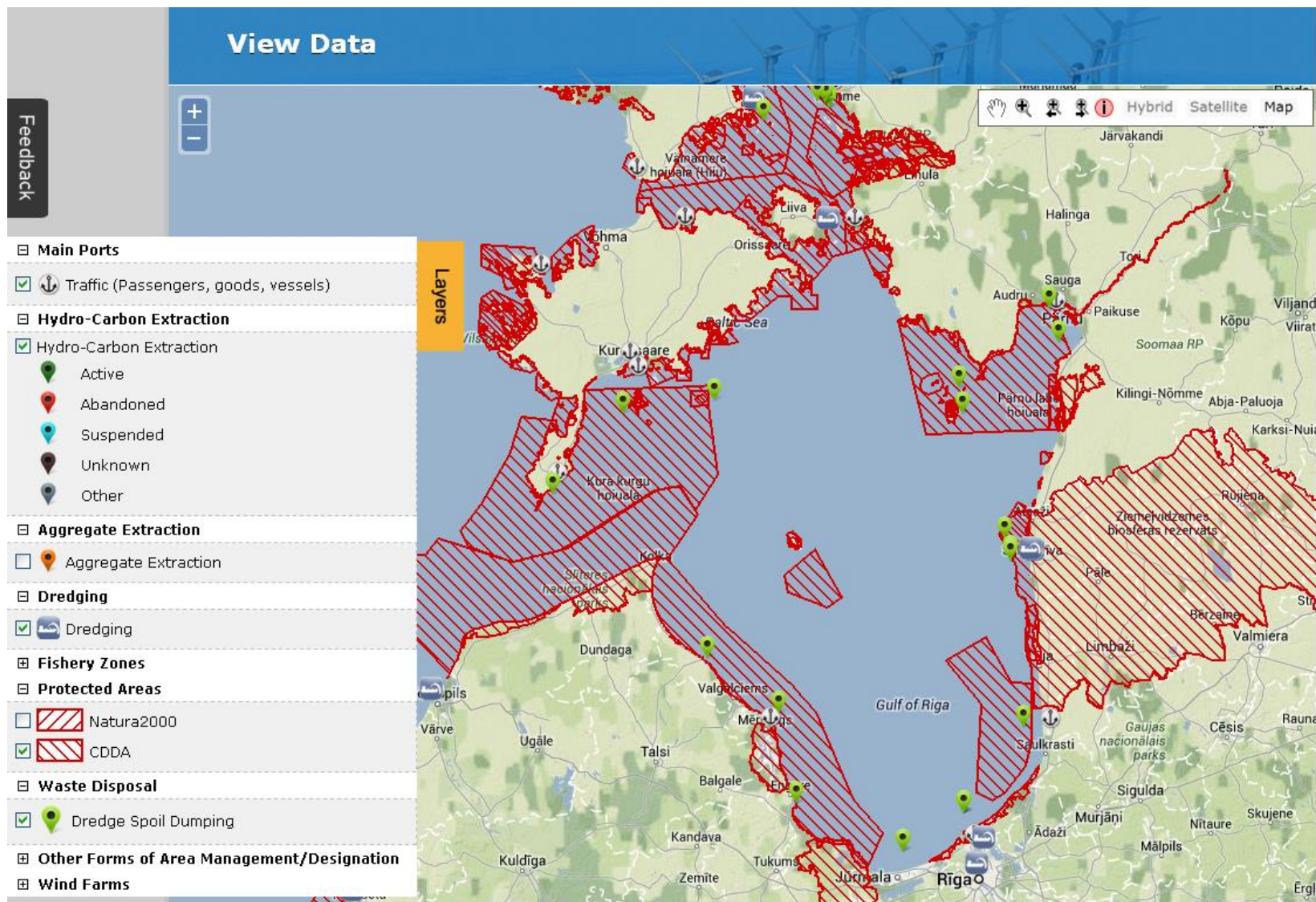
EMODnet is a network of organisations supported by the EU's Integrated Maritime Policy. These organisations work together to observe the sea, process the data according to international standards, and to make that information freely available as interoperable data layers and data products.

Presently, there are six geoportals in operation that provide data on the following themes:

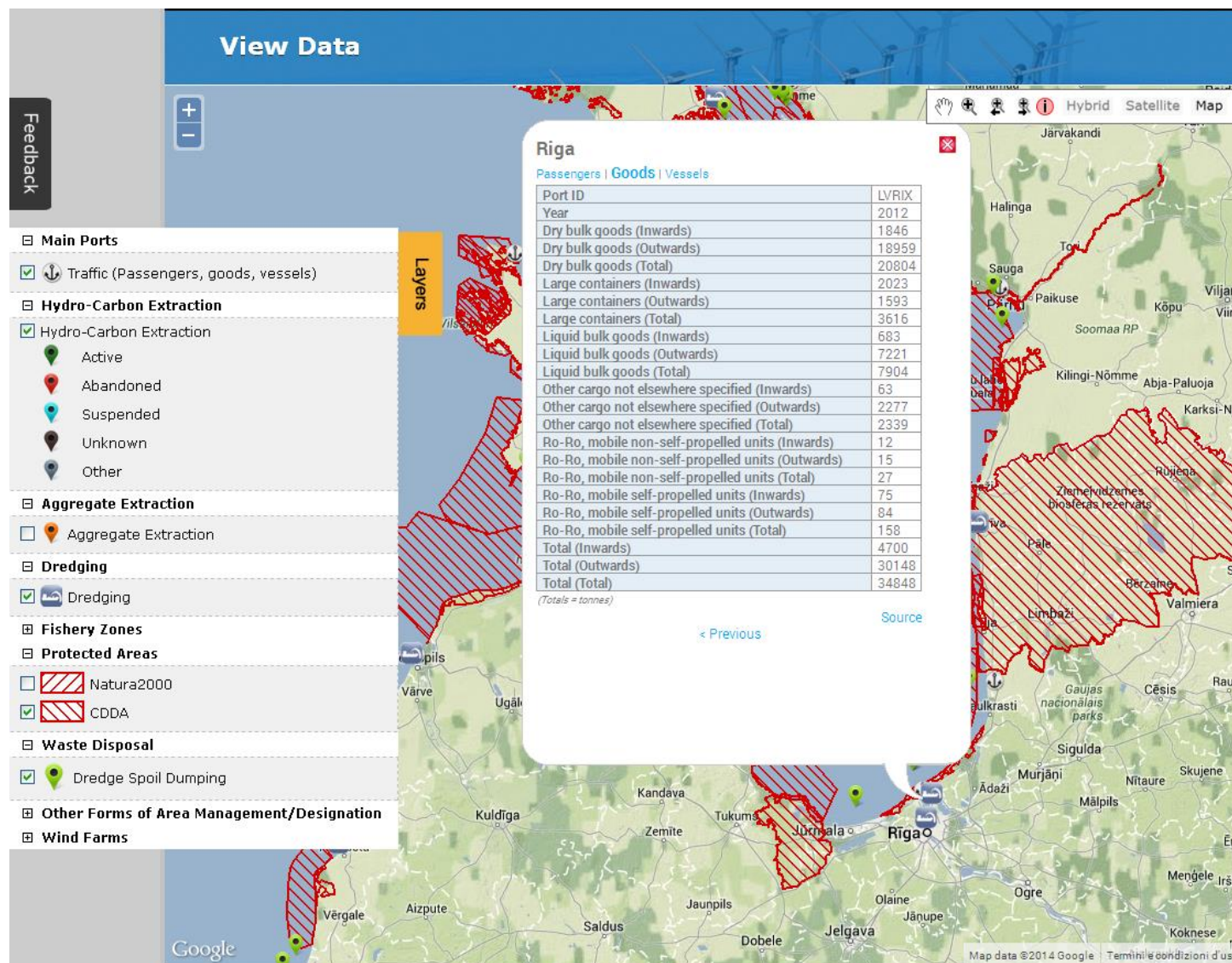


Activity	Geographic type	Attributes
Aggregate extraction	Points	Gravel extracted per year, area of activity
Commercial/recreational shipping	Grid	Average number of vessels per year, by grid cell
Cultural heritage	Points	Information on underwater settlements, wrecks, etc.
Dredging	Points	Status (years operational), purpose
Fisheries zones	Polygons	ICES and FAO nomenclature
Hydrocarbon extraction	Points	Status, purpose, and type of hydrocarbon
Major ports (traffic)	Points	Traffic of goods, passengers and vessels
Mariculture	Points	Species of fish and shellfish; production tonnage by year
Ocean energy facilities	Points	type (tide, wave, thermal gradient etc), status (planned, under construction, operational)
Pipelines and cables	Lines	Types of cable or pipeline, width
Protected areas	Polygons	Legal basis for protection
Waste disposal	Points	Status (years operational)
Wind farms	Points	number of turbines, generation capacity, status
Other forms of area management	Polygons, lines	National or international legal basis

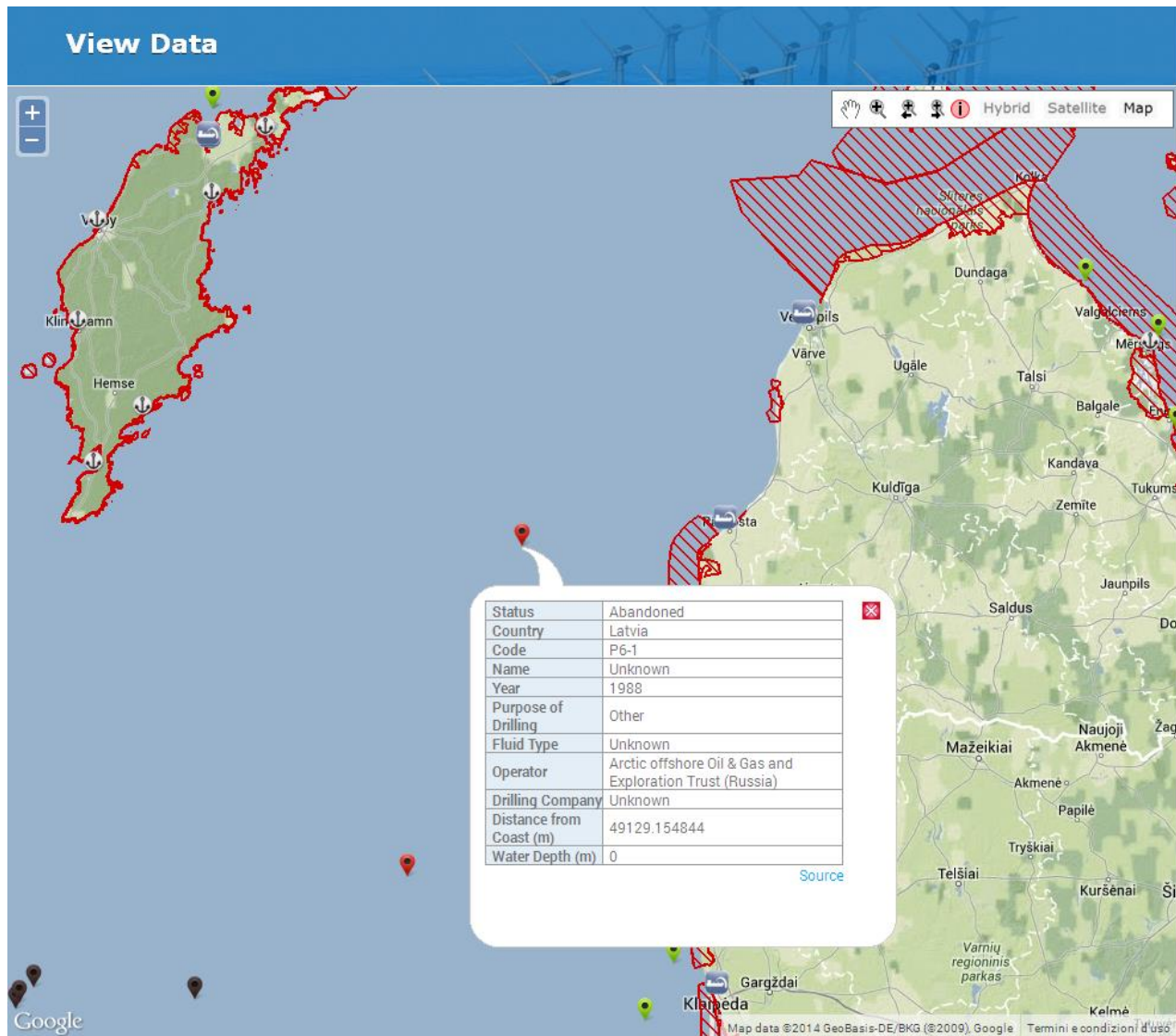
Some examples



Some examples



Some examples





- ➔ **EMODnet is not a new data collection:** we take the most from what's already available
- ➔ **Data should stay where they are:** no centralised database
- ➔ **Providing harmonised and interoperable data**
- ➔ **Data should be free and free of any restrictions**
- ➔ **Privileging public sources**

- ➔ **Enable effective and efficient maritime spatial planning and legislation for environment, fisheries, transport, border control, customs, and defence**
- ➔ **Reduce uncertainty in our knowledge and ability to forecast the behaviour of the sea, and the effects of human interaction with it**
- ➔ **Improve offshore operators' efficiency and costs in gathering and processing marine data for operational planning purposes**
- ➔ **Stimulate competition and innovation in established and emerging maritime sectors**
- ➔ **It has been estimated that an integrated marine data policy will save at least one billion Euros per year**

Thanks for your attention!

Remember to visit us at www.emodnet-humanactivities.eu and leave your feedback

Key contacts:

Cogea:	<i>Alvise Bragadin</i>	e-mail: a.bragadin@cogea.it
	<i>Alessandro Pititto</i>	e-mail: apititto@cogea.it
	<i>Luigi Falco (GIS coordinator)</i>	e-mail: lfalco@cogea.it
AND:	<i>Dominique Aviat</i>	e-mail: dominique.aviat@and-international.com
AZTI:	<i>Javier Franco</i>	e-mail: jafranco@azti.es
CETMAR:	<i>Rosa Chapela</i>	e-mail: rchapela@cetmar.org
Eurofish:	<i>Anca Sfetcovici</i>	e-mail: anca.sfetcovici@eurofish.dk
Lovell Johns:	<i>Wil Adnams (GIS coordinator)</i>	e-mail: wil.adnams@lovelljohns.com