



BUNDESAMT FÜR  
SEESCHIFFFAHRT  
UND  
HYDROGRAPHIE

# Continental Shelf Information System (CONTIS)

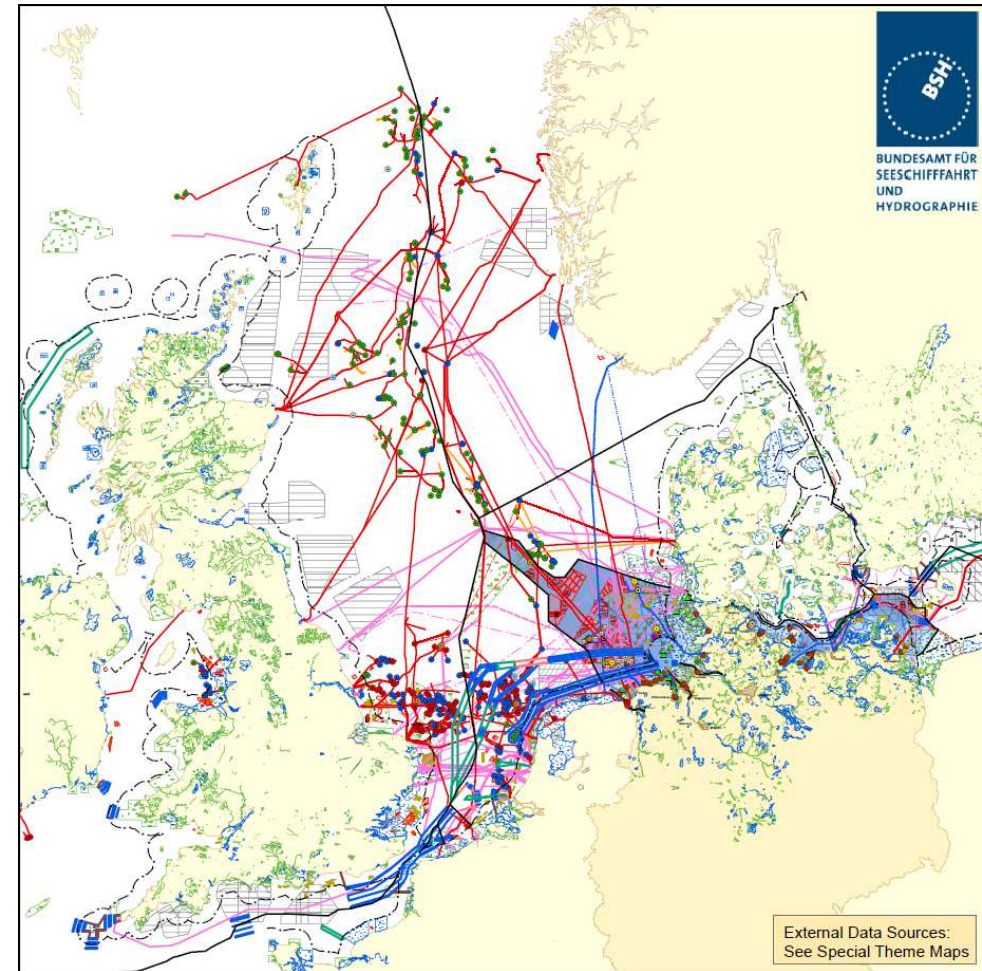


Hamburg, 19.01.2016

# CONTIS – Content

- Offshore Windfarms
- Cables
- Pipelines
- Platforms
- Maritime Features (Shipping)
- Sediment Extraction
- Dumping Grounds
- Military practice areas
- Nature conservation

[http://www.bsh.de/en/Marine\\_uses/Industry/CONTIS\\_maps/index.jsp](http://www.bsh.de/en/Marine_uses/Industry/CONTIS_maps/index.jsp)



# GeoSeaPortal – Map Client



BUNDESAMT FÜR  
SEESCHIFFFAHRT  
UND  
HYDROGRAPHIE

GeoSeaPortal Map-Client (start5) - Mozilla Firefox

gdi.bsh.de/mapClient/initParams.do

SeaPortal MapClient

Benutzername: -

Navigation Messen Zeichnen Extras

Werkzeug: Vergrößern

Suche nach...

Themen:  
Raumplanung

- Raumpfanung
- BSH WMS CONTIS Administration
  - Dumping Grounds
  - Military Practice Areas
  - Sediment Extraction
  - Preferred Areas
  - Maritime Features (Areas)
  - Maritime Features (Shipping Routes)
  - Boundaries
- BSH WMS CONTIS Facilities
  - Offshore Windfarms
  - Pipelines
  - High Voltage Cables
  - Cathode/Electrode
  - Data Cables
  - Platforms

Automatisches Aktualisieren

© Bundesamt für Seeschifffahrt und Hydrographie (BSH) powered by con terra GmbH | 1.2.103.098 | WGS84 in geografischen Koordina | Breite 707 KM - Höhe 469 KM

<https://www.geoseaportal.de/gdi-bsh-portal/ui>

Data from a variety of BSH databases:

- Background Information
- Navigation
- Activities and Offshore Grid Plan
- Bathymetry
- Shipping
- Model Forecasts
- Remote Sensing
- Oceanography
- Pollution
- Geology
- Biology
- Marine Environment

<http://linwiki-gdi60.bsh.de/wiki/index.php/Kategorie:Dienste>

## CONTIS Facilities

- Platforms
- Cables (Data Cable and High Voltage Cable)
- Pipelines
- Offshore-Windfarms

[https://www.geoseaportal.de/wss/service/CONTIS\\_Facilities/guest](https://www.geoseaportal.de/wss/service/CONTIS_Facilities/guest)

[https://www.geoseaportal.de/wss/service/CONTIS\\_Facilities/guest?request=GetCapabilities&service=WMS](https://www.geoseaportal.de/wss/service/CONTIS_Facilities/guest?request=GetCapabilities&service=WMS)

## CONTIS Administration

- Boundaries
- Maritime Features (shipping)
- Sediment Extraction
- Military Practice areas
- Dumping grounds
- Preferred areas for offshore wind energy

[https://www.geoseaportal.de/wss/service/CONTIS\\_Administration/guest](https://www.geoseaportal.de/wss/service/CONTIS_Administration/guest)

[https://www.geoseaportal.de/wss/service/CONTIS\\_Administration/guest?request=GetCapabilities&service=WMS](https://www.geoseaportal.de/wss/service/CONTIS_Administration/guest?request=GetCapabilities&service=WMS)

# Spatial Offshore Grid Plan via WMS

## Spatial Offshore Grid Plan (BFO)

- Development Freeze (Veränderungssperre) 2012
- Spatial Offshore Grid Plan North Sea 2012
- Spatial Offshore Grid Plan Baltic Sea 2013

[https://www.geoseaportal.de/wss/service/CONTIS\\_Spatial\\_Offshore\\_Grid\\_Plan/guest](https://www.geoseaportal.de/wss/service/CONTIS_Spatial_Offshore_Grid_Plan/guest)

[https://www.geoseaportal.de/wss/service/CONTIS\\_Spatial\\_Offshore\\_Grid\\_Plan/guest?request=GetCapabilities&service=WMS](https://www.geoseaportal.de/wss/service/CONTIS_Spatial_Offshore_Grid_Plan/guest?request=GetCapabilities&service=WMS)

- Wiki for all services (in German):

<http://linwiki-gdi60.bsh.de/wiki/index.php/Kategorie:Dienste>

# Example (existing Database): Offshore Windfarms Attributes

- Name (String, length 50)
- Status (Short Integer)
- Confidence (Confidentiality) (Short Integer)
- Remark (String, length 250)
- Operating Company (String, length 100)
- In Service Date (Date)
- Projected Operation Period (Short Integer)
- Number of Plants (Long Integer)
- Power Rating (MW) (Long Integer)
- Out of Service Date (Date)
- Application (Short Integer)
- Approval (Date)
- Construction Start (Date)



# Example (existing Database): High Voltage Cable Attributes

- Name (String, length 50)
- Status (Short Integer)
- Confidence (Confidentiality) (Short Integer)
- Remark (String, length 250)
- Operating Company (String, length 100)
- In Service Date (Date)
- Projected Operation Period (Short Integer)
- Power Rating (MW) (Long Integer)
- Max Amperage (A) (Long Integer)
- Max Voltage (kV) (Long Integer)
- Out of Service Date (Date)

### Purpose:

- **Support of Application Procedures for Offshore Wind Farms and related Infrastructure (Platforms, Cables – both inside Wind Farms, and Transmission Lines)**
  - Inclusion of a multitude of further data and information
  - Automatisations of data input procedures (provision of data by applicants)
  - Enhanced quality and plausibility assessments
  - Easy data analysis and preparation of detailed maps and reports, for several purposes (single projects, tables/overviews for reporting towards government, press etc.)
- **Enhanced procedures for „manual“ maintenance and data input**

## CONTIS.2 - Revision and Extension

### State of Progress:

- First version of new data model – to be revised
- Processes (FME) developed, to be adapted
- Remaining bugs, missing or wrong items, formats etc. to be worked on
- Running tests towards final version in summer 2016
- Implementing date planned for summer 2016

Thank you very much!



BUNDESAMT FÜR  
SEESCHIFFFAHRT  
UND  
HYDROGRAPHIE

