

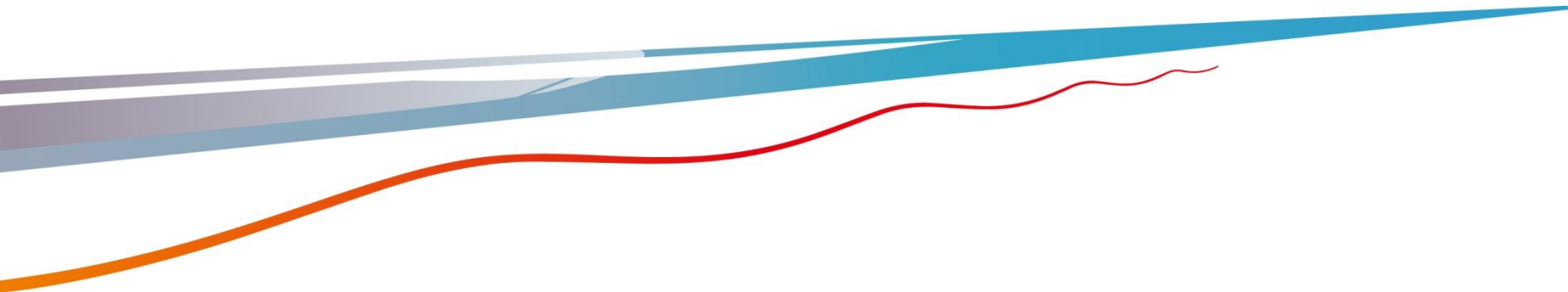


NORWEGIAN MINISTRY OF  
LOCAL GOVERNMENT AND MODERNISATION

# The European Landscape Convention Coastal management and planning in Norway

Liv Kirstine Mortensen

Baltic Landscape Forum, Riga 10th September 2015



# Some general facts and figures about Norway and ELC



## Statistics

Land area main land: 323 771 km<sup>2</sup>

- Forests: 20 %
- Wilderness: 75 %
- Arable land: 3 %
- Built up areas: 2 %
- Coast (base line): 2 532 km
- Land borders: 2 562 km

Population: 5 189 435

428 municipalities

**Norway signed the European Landscape Convention in oct. 2000, and ratified it one year later.**

**The Department of Regional Planning at the Ministry of Local Government and Modernisation is responsible**



# The landscape is in a state of change





# Legislation and landscape

The Planning and Building Act of 2008

The Nature Diversity Act of 2009

The Cultural Heritage Act of 1978

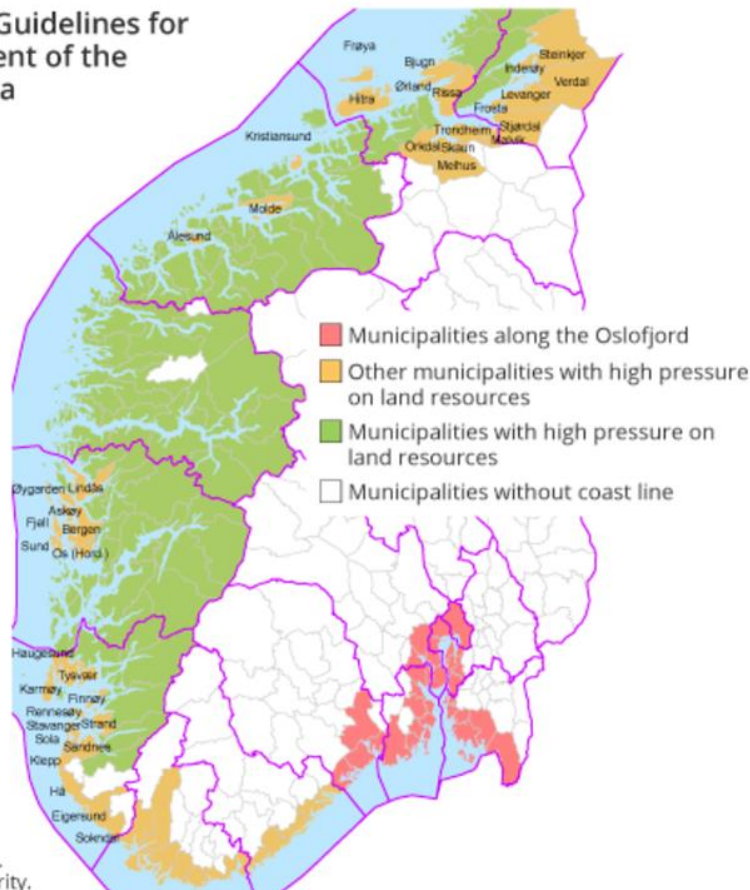




Since 1965, prohibition on projects and construction works along the seashore

In the 100-meter belt along the seashore and river systems, special consideration shall be given to the natural and cultural environment,

**Figure 5. National Policy Guidelines for differentiated management of the coastal zone along the sea**

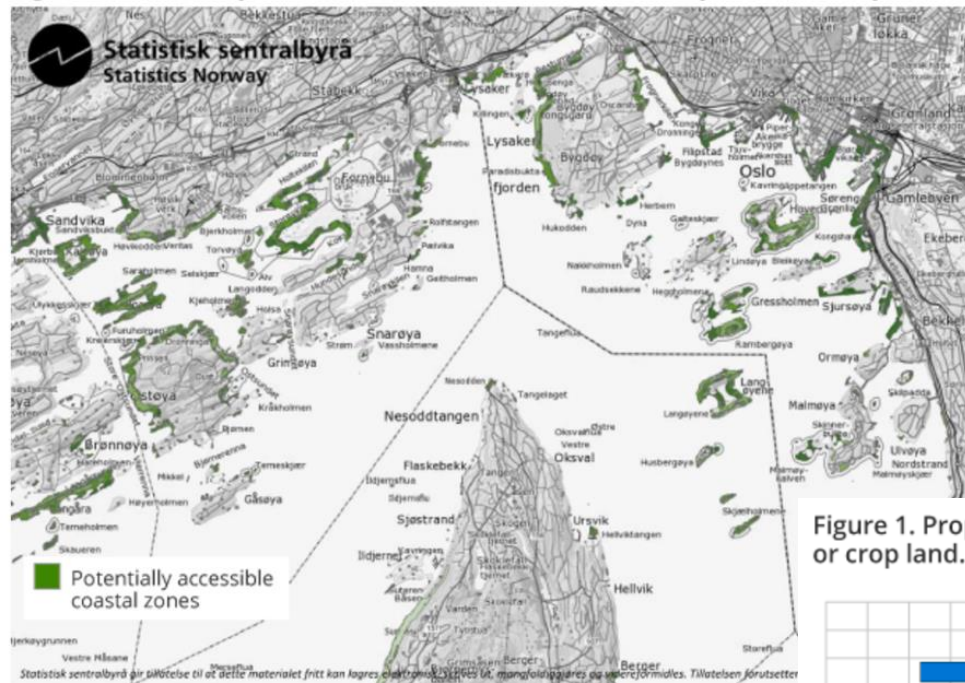


Source: Ministry of Environment 2011.  
Map data: Norwegian Mapping Authority.

outdoor recreation,  
landscape and other  
elements of public  
interest.

National Policy  
Guidelines for a  
Differentiated  
Management of the  
Shoreline along the  
Sea came into force  
March 25, 2011

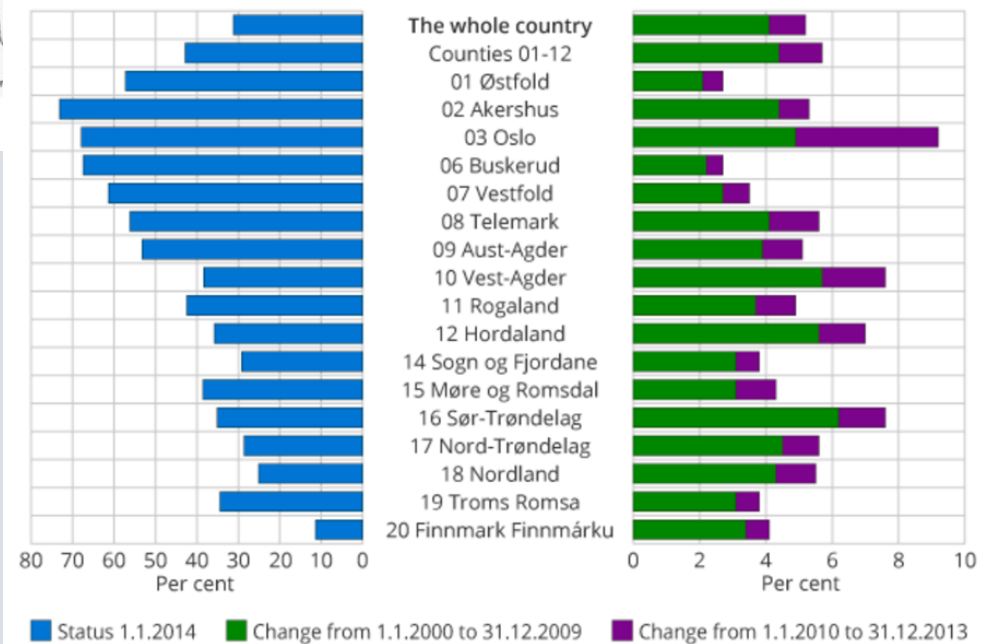
Figure 2. Potentially accessible coastal zones, Inner Oslofjord. 1. January 2015



Source: Statistics Norway.  
For more information and other regions, visit <http://kart.ssb.no/> (choose layer 'Coastal zones')

# The publicly accessible shore zone is shrinking

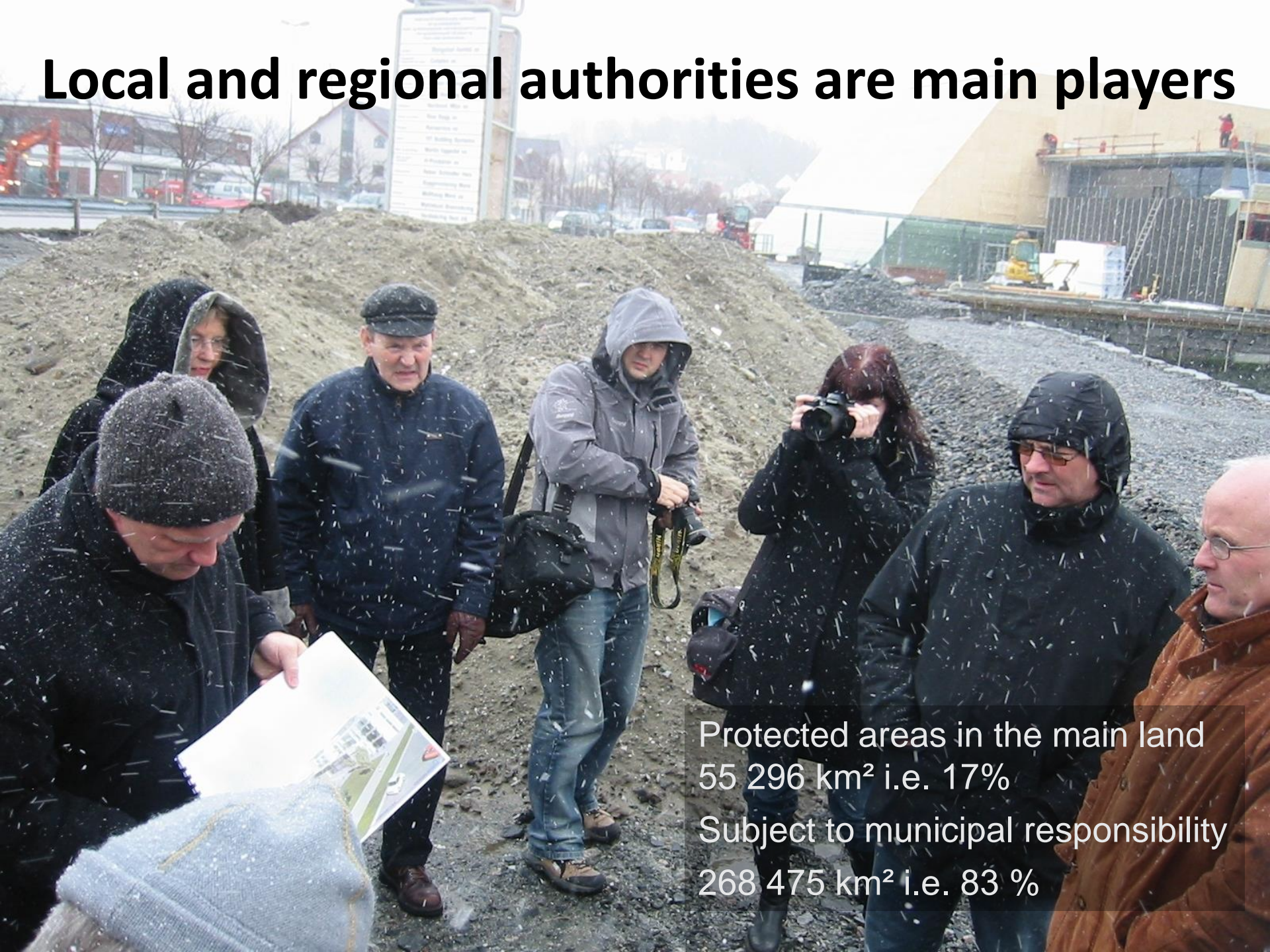
Figure 1. Proportion of the coastal zone influenced by buildings, railways, roads or crop land. County



Source: Statistics Norway.



# Local and regional authorities are main players



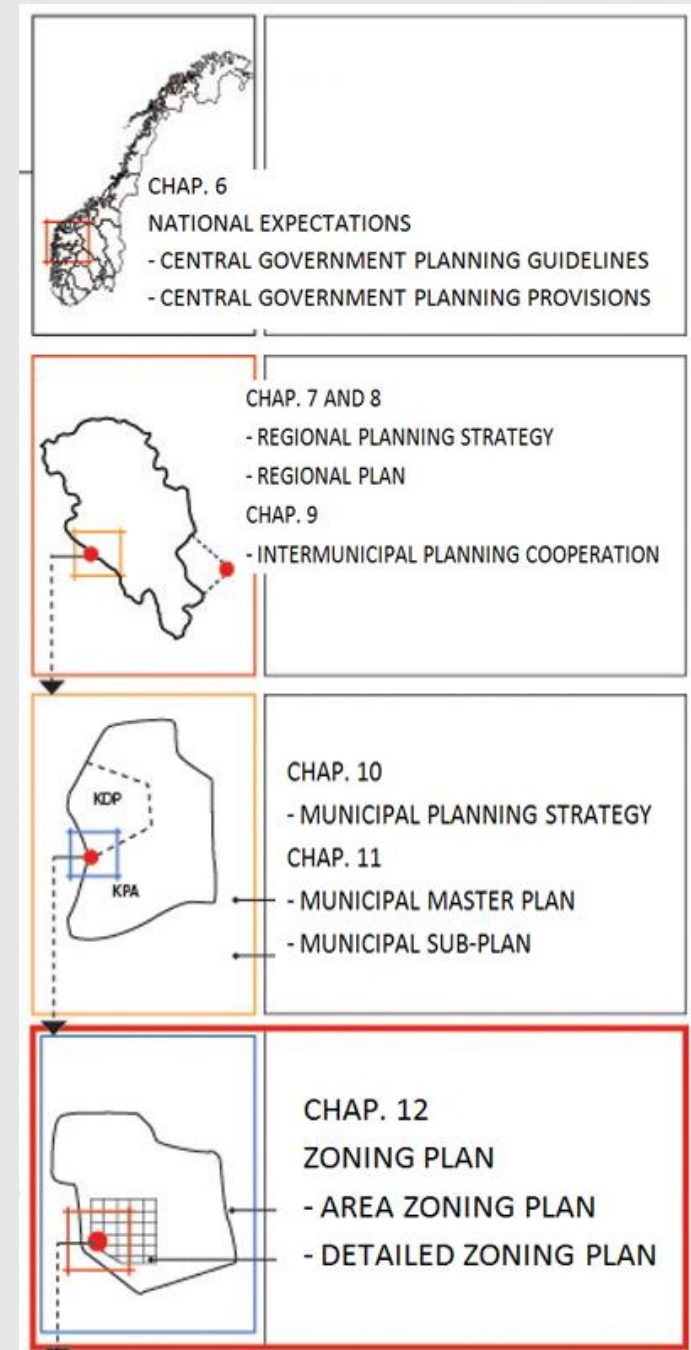
Protected areas in the main land  
55 296 km<sup>2</sup> i.e. 17%  
Subject to municipal responsibility  
268 475 km<sup>2</sup> i.e. 83 %



# A hierarchy of decision-making



Overriding policies and guidelines for municipal master plans





# Objections – who can

- State sector authorities
- The Sami Parliament
- Regional level; Municipalities
- Essential interests affected!

# Objections – effects

- The plan can't be approved
- The developer can't build
- County commissioner mediation
- Evt. decision by the Ministry



# The policy instruments



Foto: Liv Kirstine Mortensen, KMD



- National guidelines in white papers, etc.
- Legislation
- Methodological development
- Individual decision related to objections and complaints



Foto: Liv Kirstine Mortensen, KMD



Foto: Kristin Nordli, KMD



# The Planning and Building Act (2008)

Level	Guidelines	Provisional binding	Binding plans
<i>National (state)</i>	<ul style="list-style-type: none"> <li>• National expectations</li> <li>• National guidelines</li> </ul>	<ul style="list-style-type: none"> <li>• Planning decisions</li> </ul>	<ul style="list-style-type: none"> <li>• Govermental planning</li> </ul>
<i>Regional (county)</i>	<ul style="list-style-type: none"> <li>• Planning strategy</li> <li>• Regional plans</li> </ul>	<ul style="list-style-type: none"> <li>• Planning decisions</li> </ul>	
<i>Local (municipal)</i>	<ul style="list-style-type: none"> <li>• Planning strategy</li> </ul> Masterplan – community part	Different restricted areas f.ex. Waiting for detailed planning	<ul style="list-style-type: none"> <li>• Masterplan – areal part</li> <li>• Development plan</li> </ul> Two levels (area and detail)

## New elements

- National expectations regarding regional and municipal planning
- Regional and municipal planning strategy
- Regional planning decisions

- The landscape is made clear in § 3.1, functions and considerations
- Zones requiring special consideration
- Increased emphasis on area zoning plan for integrated overall solutions
- Better connections between planning decisions and building applications and permissions

# Norway

428 municipalities

- smallest

209 inhabitants

- largest

635.000 inhabitants

19 county authorities

## Scope of the Planning and Building Act

The Act of 2008 applies to the entire country, including river systems.

In marine areas, the Act applies to a zone extending one nautical mile beyond the baselines of the territorial sea.

The Act does not apply to marine pipelines for the transport of petroleum.

Only chapters 2 and 14 apply to installations for the transmission or conversion of electric power as mentioned in the Energy Act.

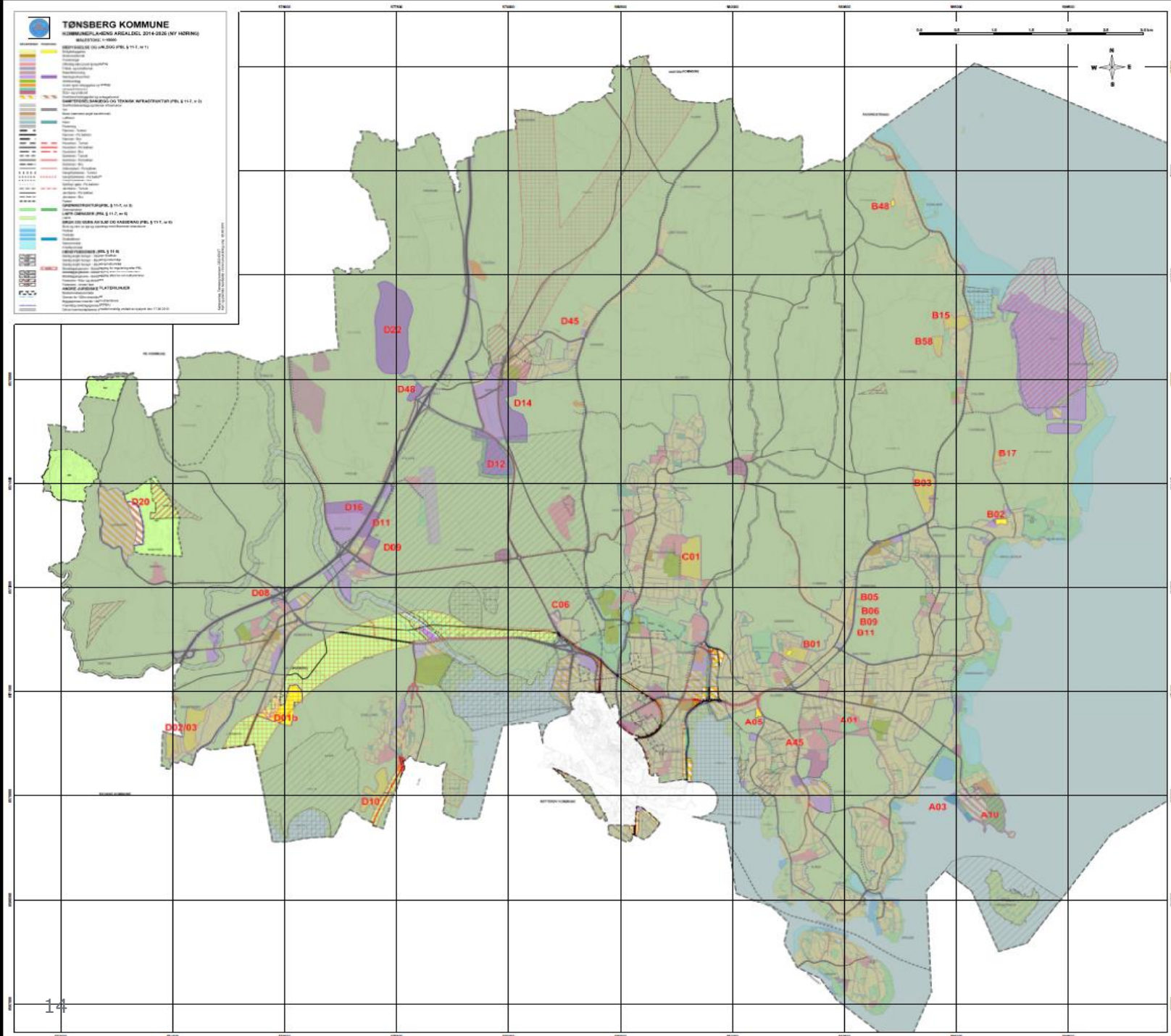


Formål	Kode kp m/farge	Kode rp m/farge
Bruk og vern av sjø og vassdrag med tilhørende strandsone	6001	6001
Ferdsel	6100	6100
Farleder	6200	6200
Hoved- og biled(gjelder fra 1.1.2013)		
•		6210
havneområde i sjø		6220
småbåthavn		
<ul style="list-style-type: none"> <li>Dette formålet kan trekkes inn på land</li> <li>Båtopplag på land spesifiseres ved bruk av bestemmelse</li> <li>Småbåthavn benyttes typisk der det skal etableres anlegg for småbåter av mer allmenn karakter, og bruken ikke er begrenset til nærmere fastsatte eiendommer, jf. kode 1587 og 1588. Småbåthavner vil som regel ha et eget driftsselskap, mens småbåtanlegg ikke har det. En småbåthavn må forventes å generere mer båttrafikk og trafikk på land enn småbåtanlegg.</li> </ul>	6230	6230
bøyehavn		6240
Fiske	6300	6300
fiskebruk		6310
kaste- og låssetingsplasser		6320
oppvekstområde for yngel		6330
Akvakultur	6400	6400
akvakulturanlegg i sjø og vassdrag		6410
akvakulturanlegg i sjø og vassdrag med tilhørende landanlegg		6420
Drikkevann	6500	6500
Naturområde	6600	6600
naturområde i sjø og vassdrag		6610
naturområde i sjø og vassdrag med tilhørende strandsone		6620
Friluftsområde		
g. Kan i bestemmelse til arealdelen av kommuneplan angi at det er tale om badeområde	6700	6700
friluftsområde i sjø og vassdrag		6710
friluftsområde i sjø og vassdrag med tilhørende strandsone		6720
idrett og vannsport		6760
badeområde		6770
Kombinerte formål i sjø og vassdrag med eller uten tilhørende strandsone	6800	6800
Angitt formål i sjø og vassdrag med eller uten tilhørende strandsone kombinert med andre angitte hovedformål Kan kombinere for eksempel med		6900
<ul style="list-style-type: none"> <li>ferdsel (6100) med nærmere angivelse</li> </ul>		

# New land-use objectives for use and conservation of the sea and river systems with associated shore zones

Left: municipal master plan  
Right: zoning plan

The groups from the municipal master plan can be subdivided in the zoning plan



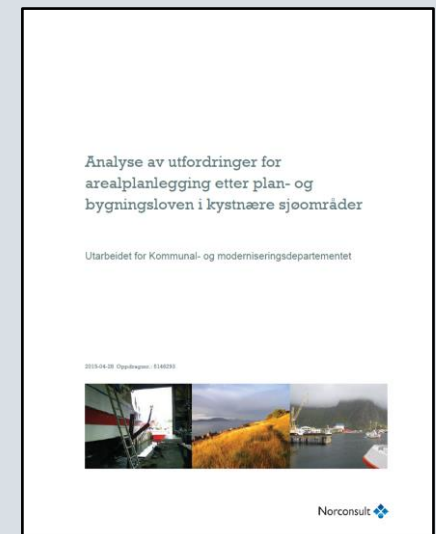
# Municipal master plan with plan provisions



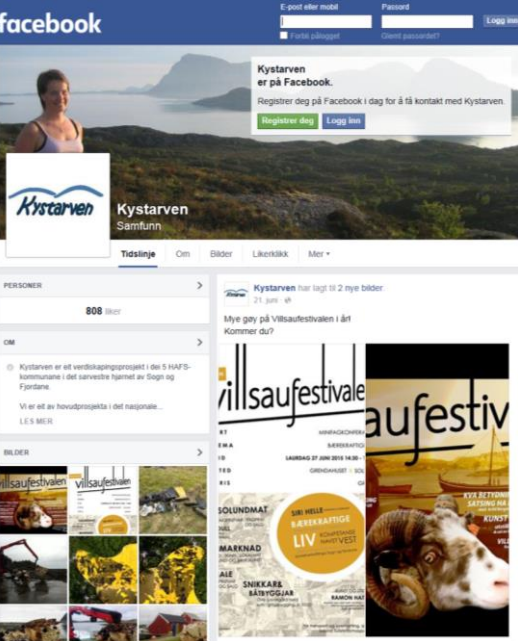


# New possibilities

- Regional plans for important issues in the coastal zone
- Strategy for guidance
- Separate Land-use objectives for Regional plan







# Natural and Cultural Heritage in coastal areas





# Information, Guidelines and Pilot projects



# Regional parks and landscape parks



## Regionalparker i Norge



Kartlegging av samarbeid og resultater i seks regionalparker

Hva er oppnådd og hva er merverdien?

16.05.2014



- Nature and Culture Park
- World Heritage Park
- Canal Regional Park
- Local Parks
- Coastal Regional Park?



Telemark Canal Regional Park



## Scale -

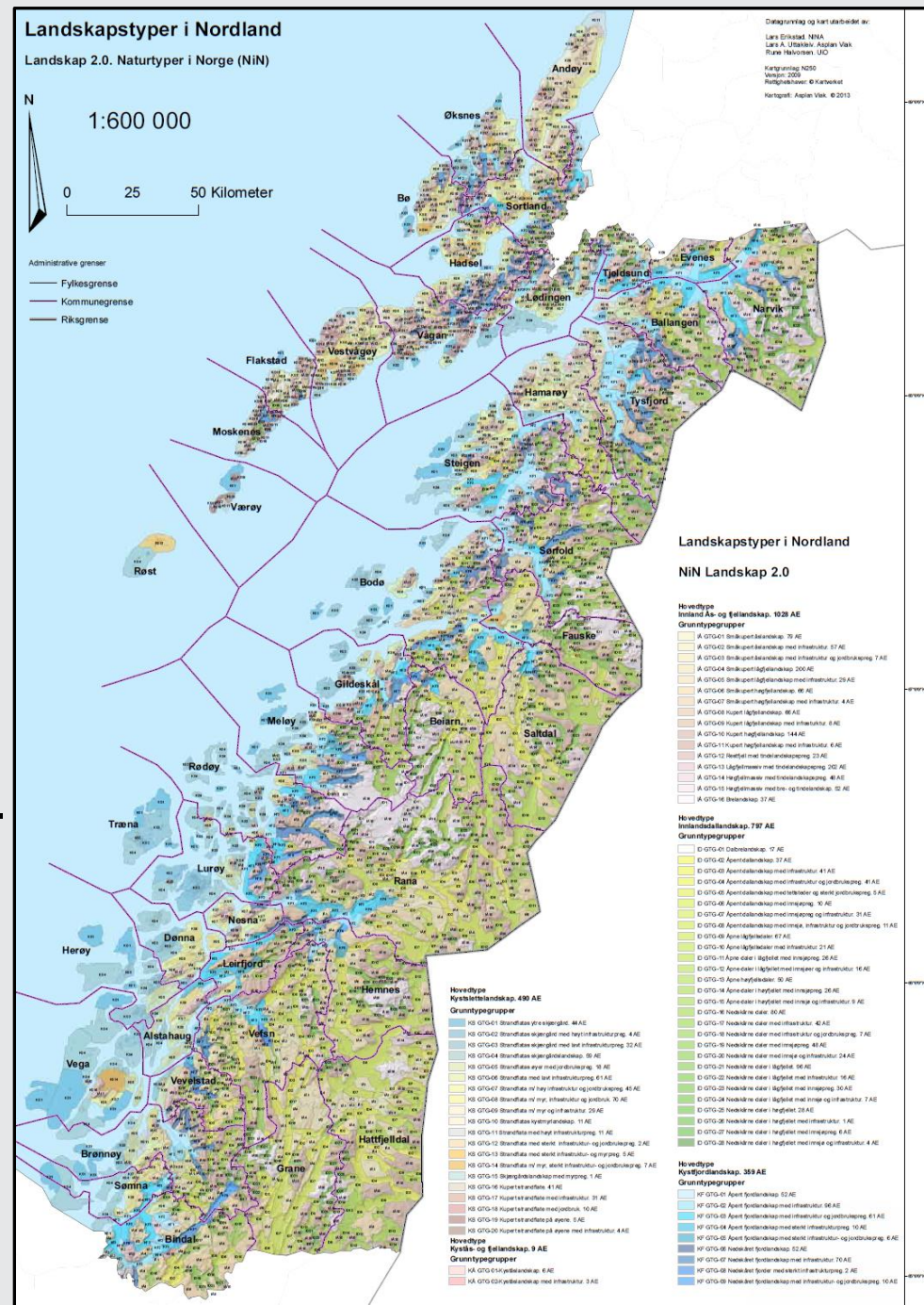
five nature type levels:

- region
- landscapes and seascapes
- landscape element
- ecological system
- microhabitat

## Landscape and seascapes -

three major types:

- Inland landscape
- Coastal landscape
- Marine Landscape



# Thank you for your attention



[lkmd@kmd.dep.no](mailto:lkmd@kmd.dep.no)