

# BALTIC MSP FORUM

17-18 JUNE 2014 RIGA, LATVIA

# Baltic Maritime Spatial Planning Forum

## PartiSEApate Conference

Creating common understanding

# POEM - Plano de Ordenamento Espaço Marítimo

# The Portuguese Maritime Spatial Plan – First attempt

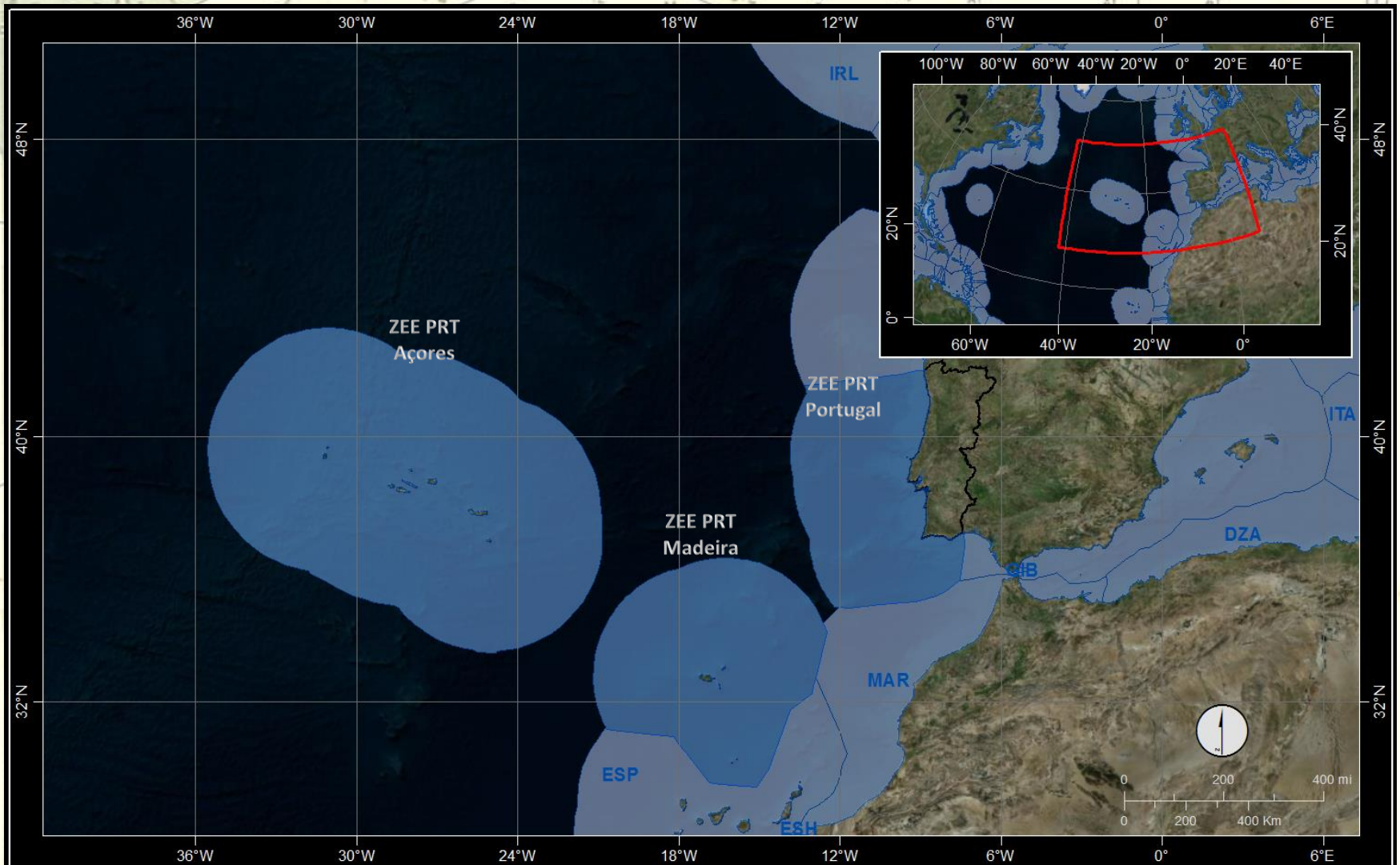
CALADO, Helena

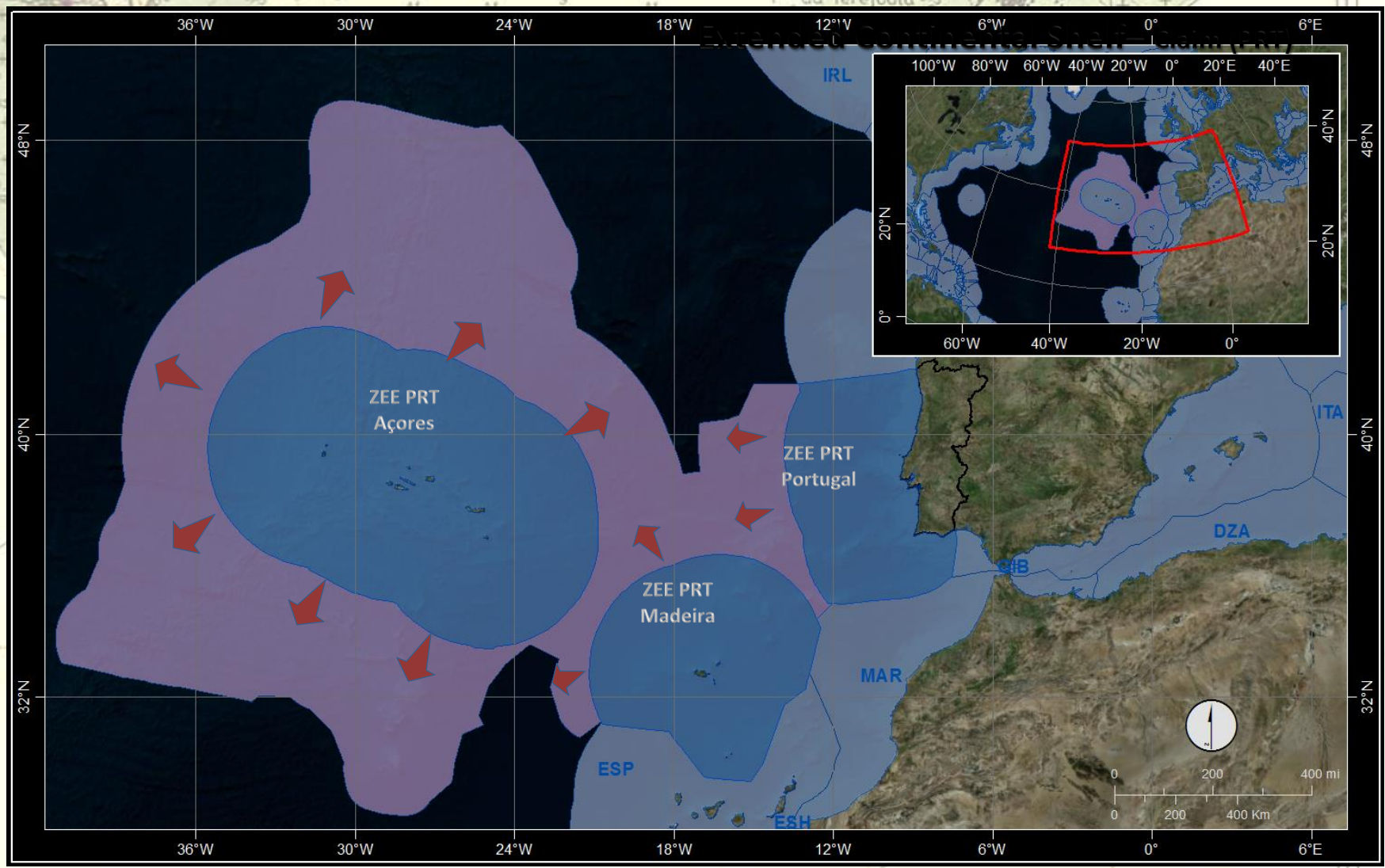
RIGA, 2014

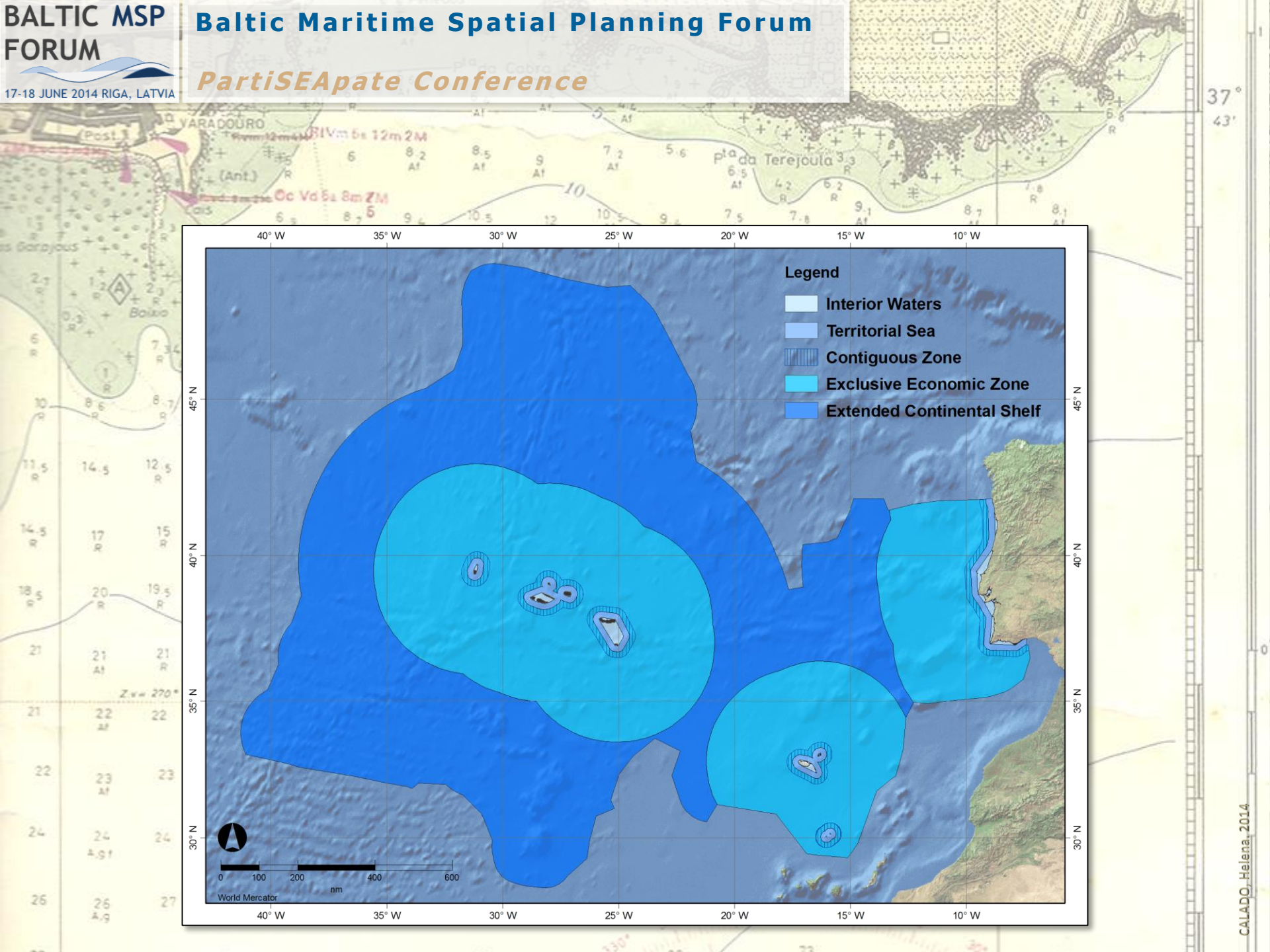




**Exclusive Economic Zone— Portugal (PRT)**

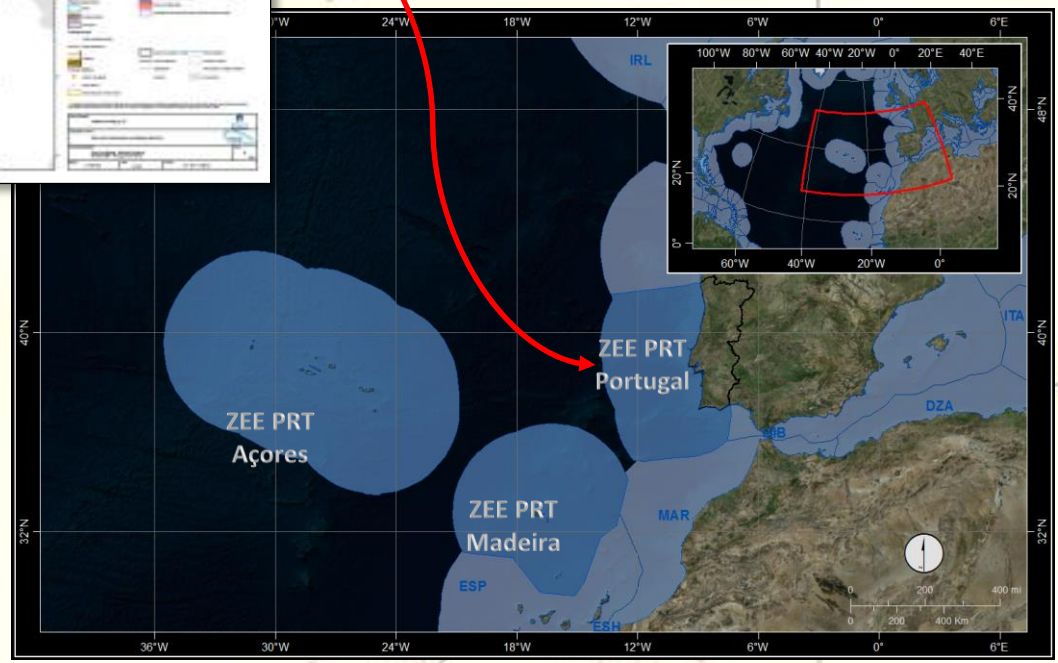
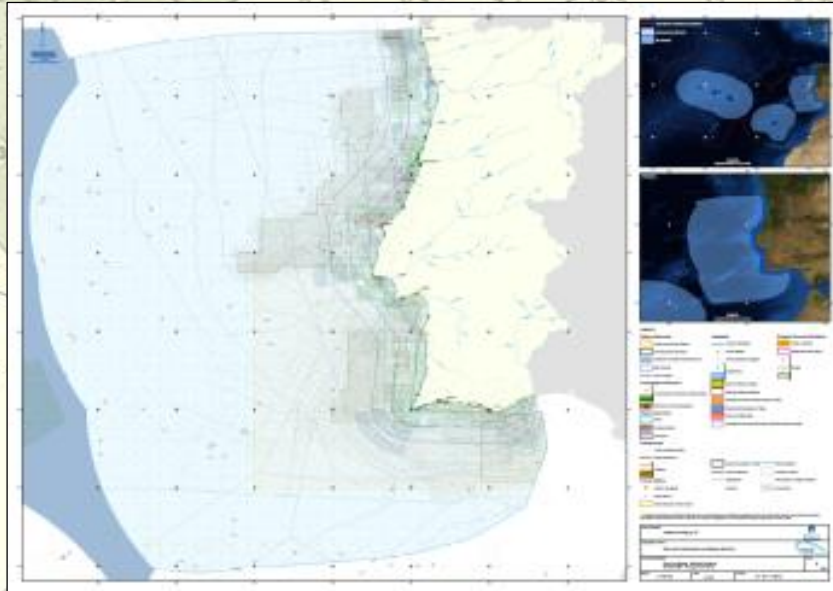
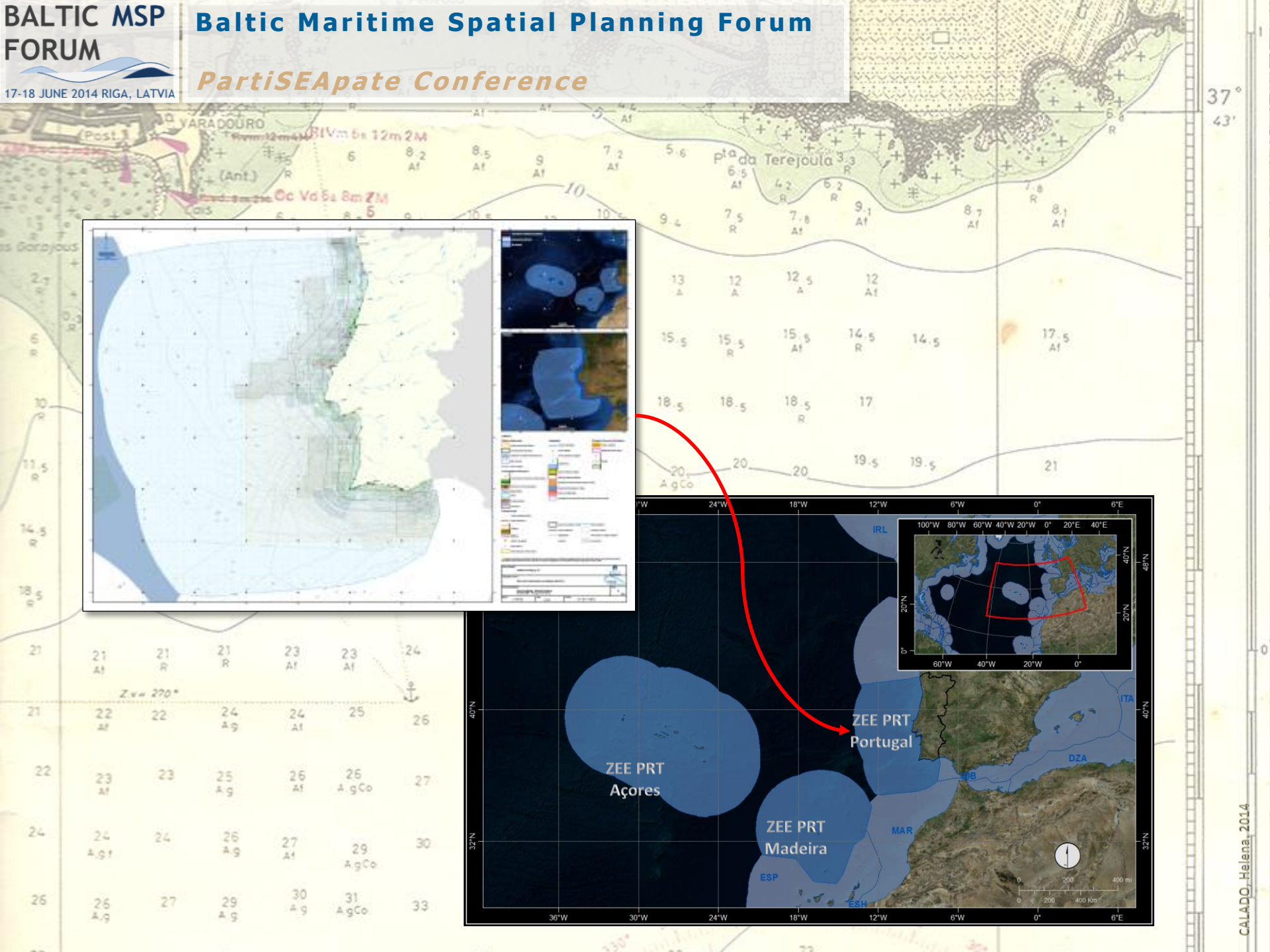




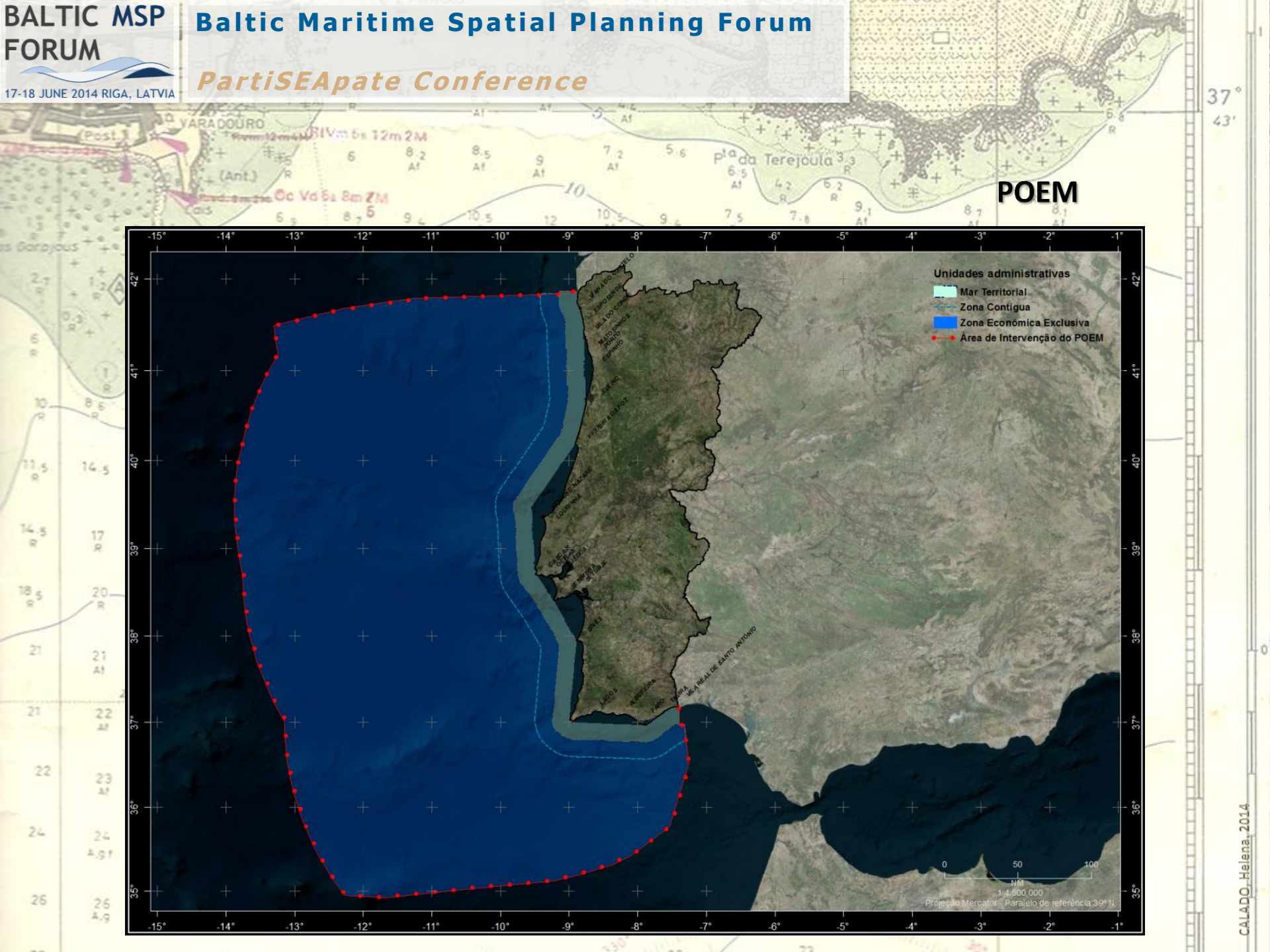


# The Conceptual Phase

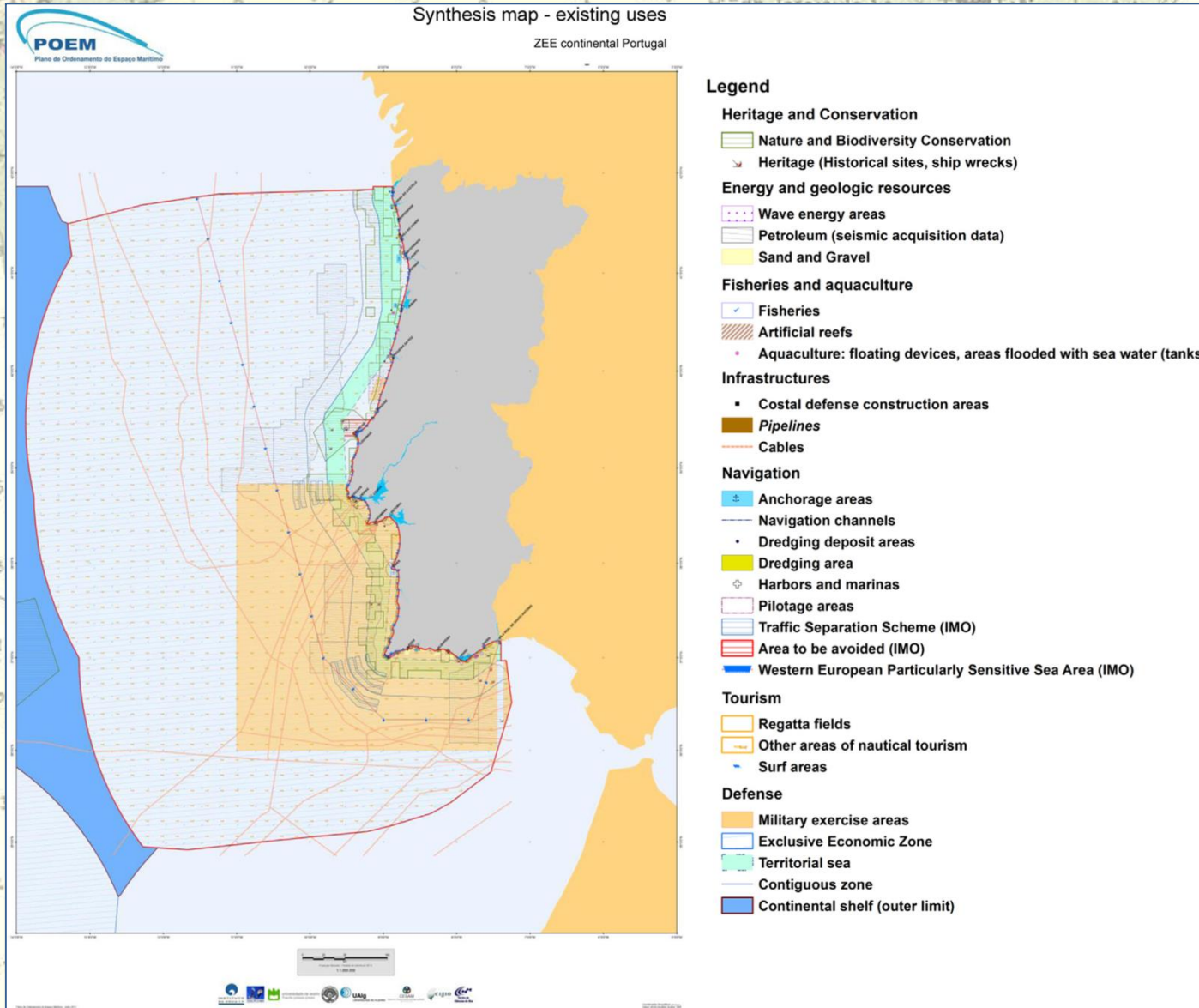
- Strenghts
- Clear mandate for Plan Process to begin
- The constitution of the Inter ministerial Commission
- The *momentum* for MSP
- The decision to plan for 3 different Nacional Areas but with all Regions represented



37°  
43'



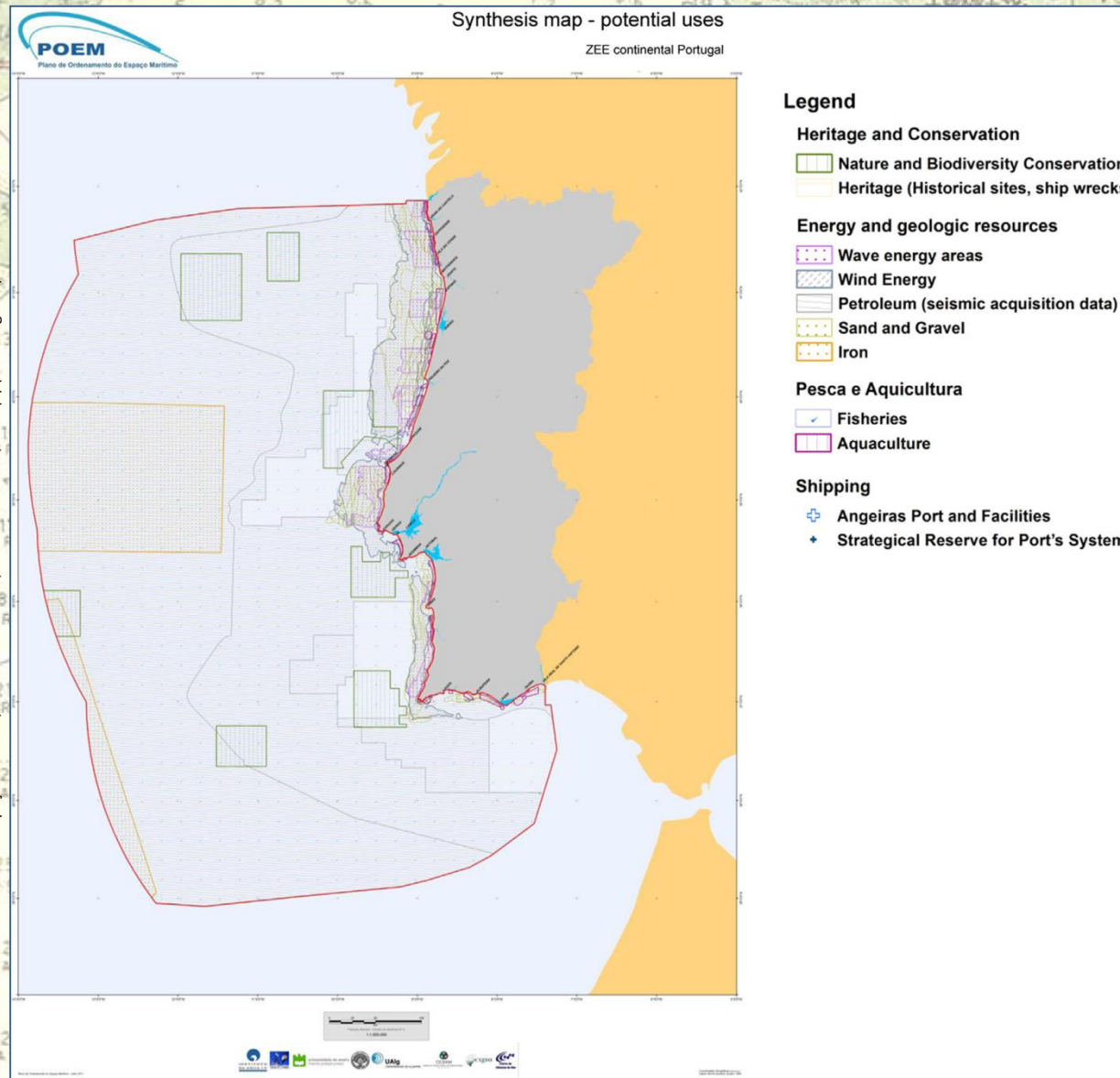
**Synthesis map of existing uses**



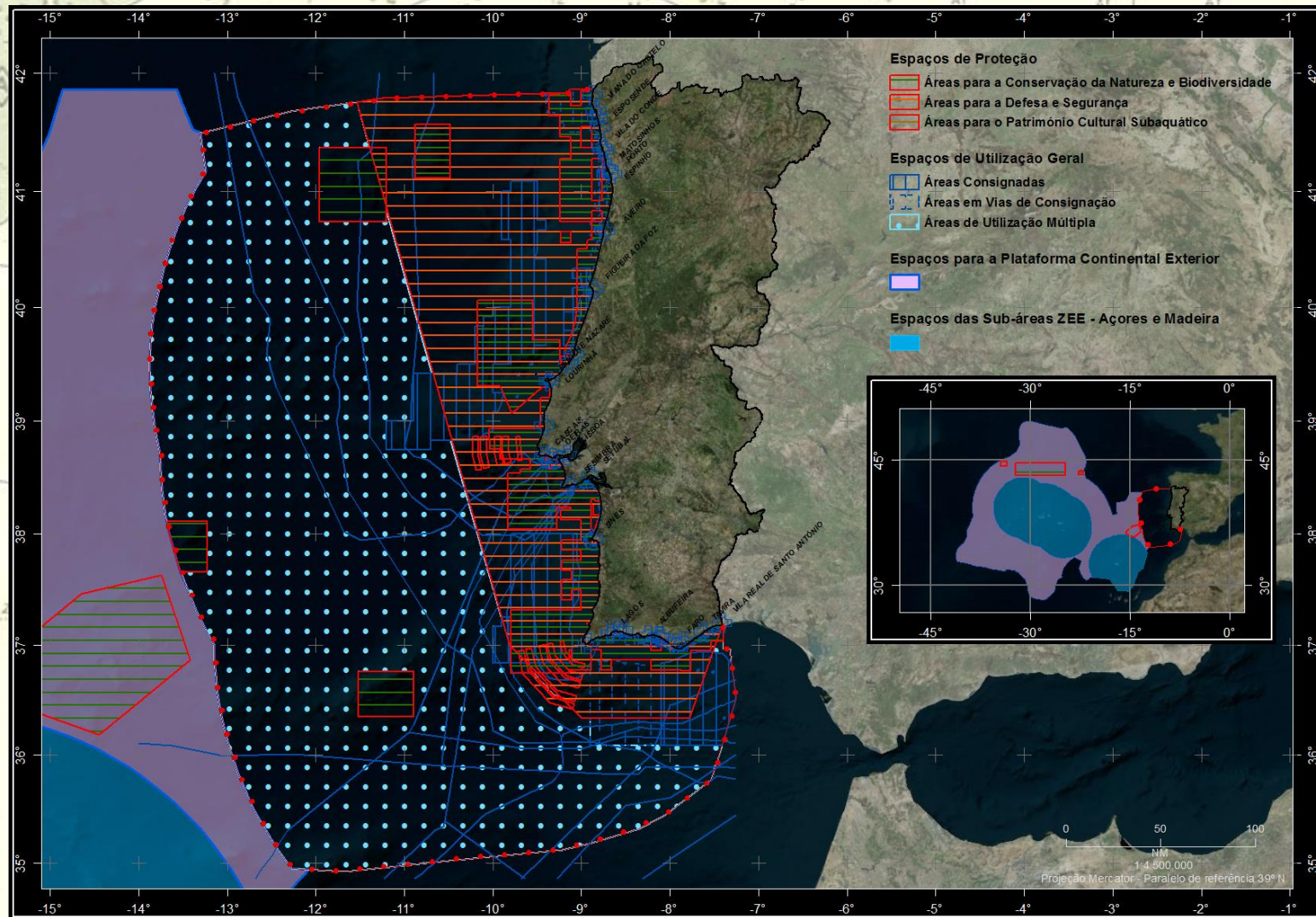
37°  
43'



**Synthesis map of the potential uses**

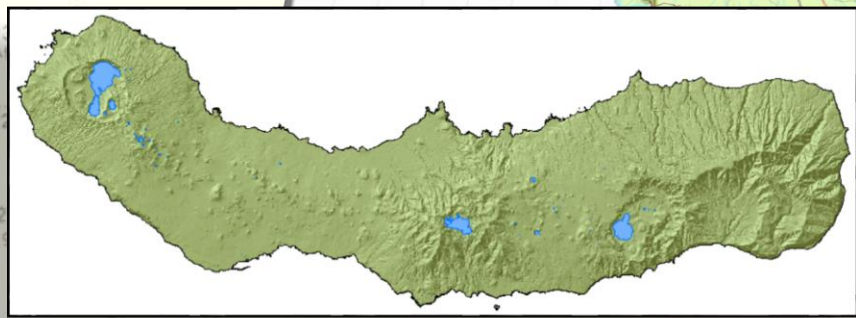
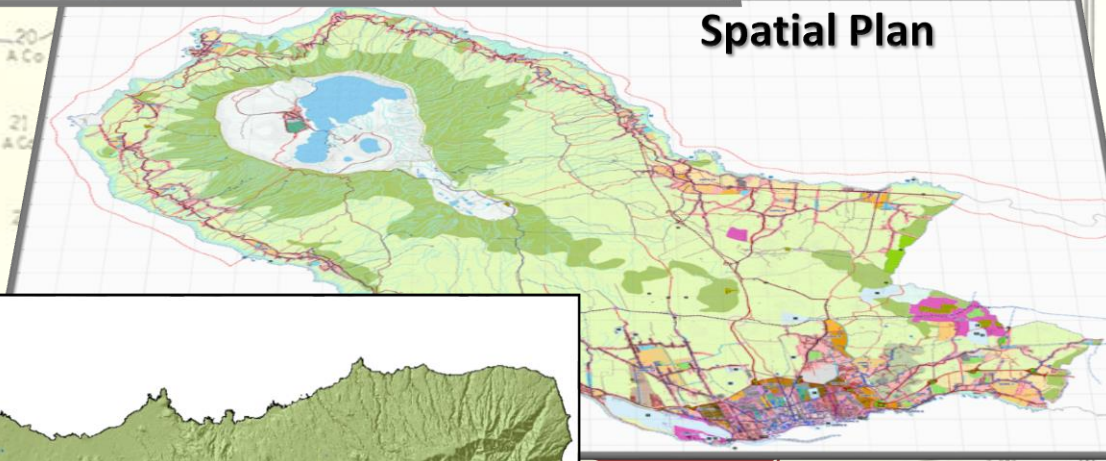


### Proposal sub-área ZEE – Portugal Continental



# Weakness

- Lack of legal specific Framework
- Plan typology from terrestrial experience with no adaptation
- Mixed (mis)understandings about Plan Contents and expected outcomes
- National Water Agency as new player on Maritime issues (Coastal Management Plans were only terrestrial)
- No clear mandate of any agency for future implementation



# The Planning Phase

- STRENGTHS

- The adequate period of time
- The collection and organization of information
- Although Environment was treated as a sector it was high on the criteria ranking scale for conflict solving

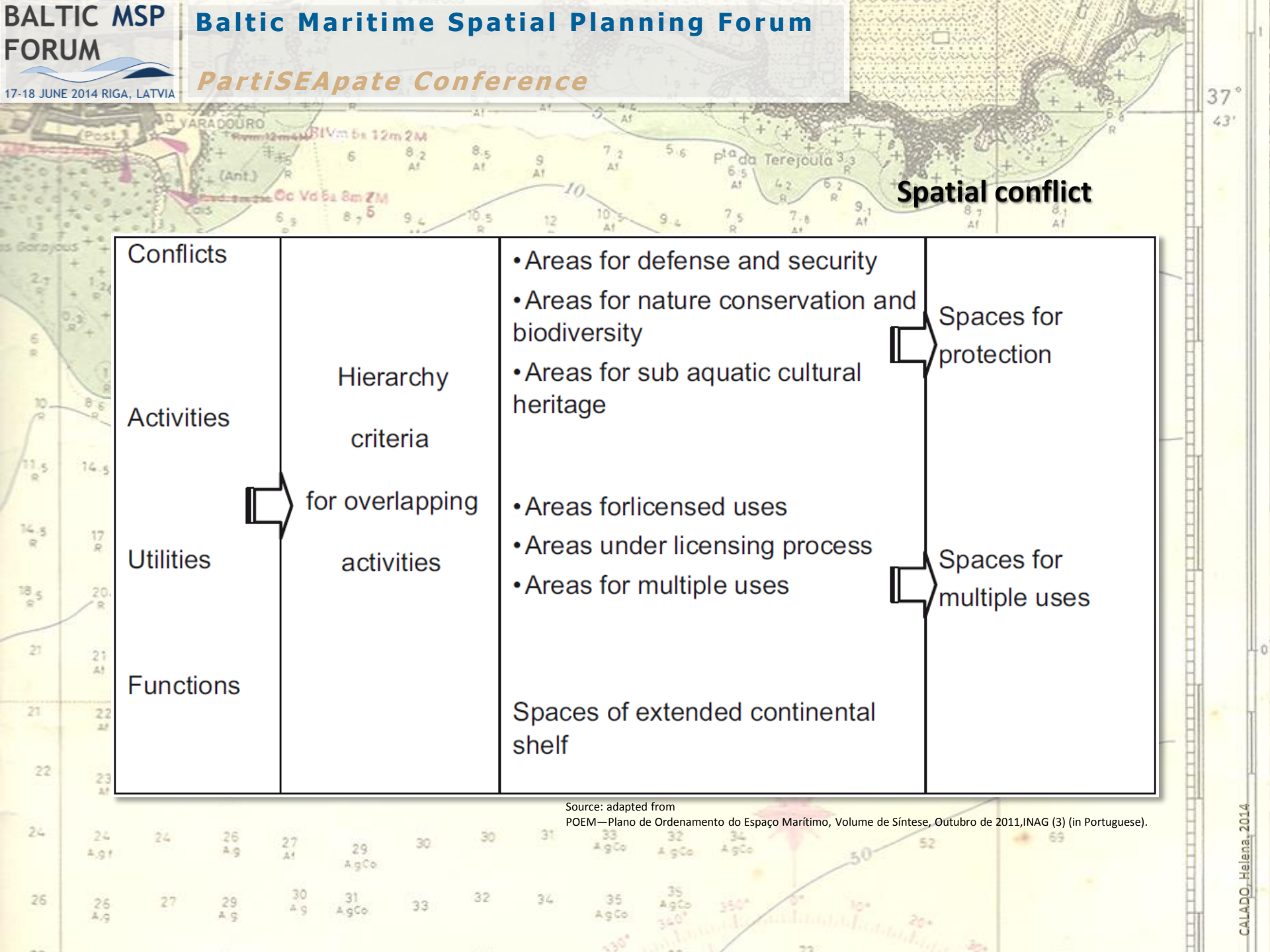
# Weakness

- Option for “weak” sustainability approach with Environment being treated as one sector instead of EBM
- Inconsequent approach to Adaptive Management (monitoring plan driven, no performance monitoring, no solution for legal framework)

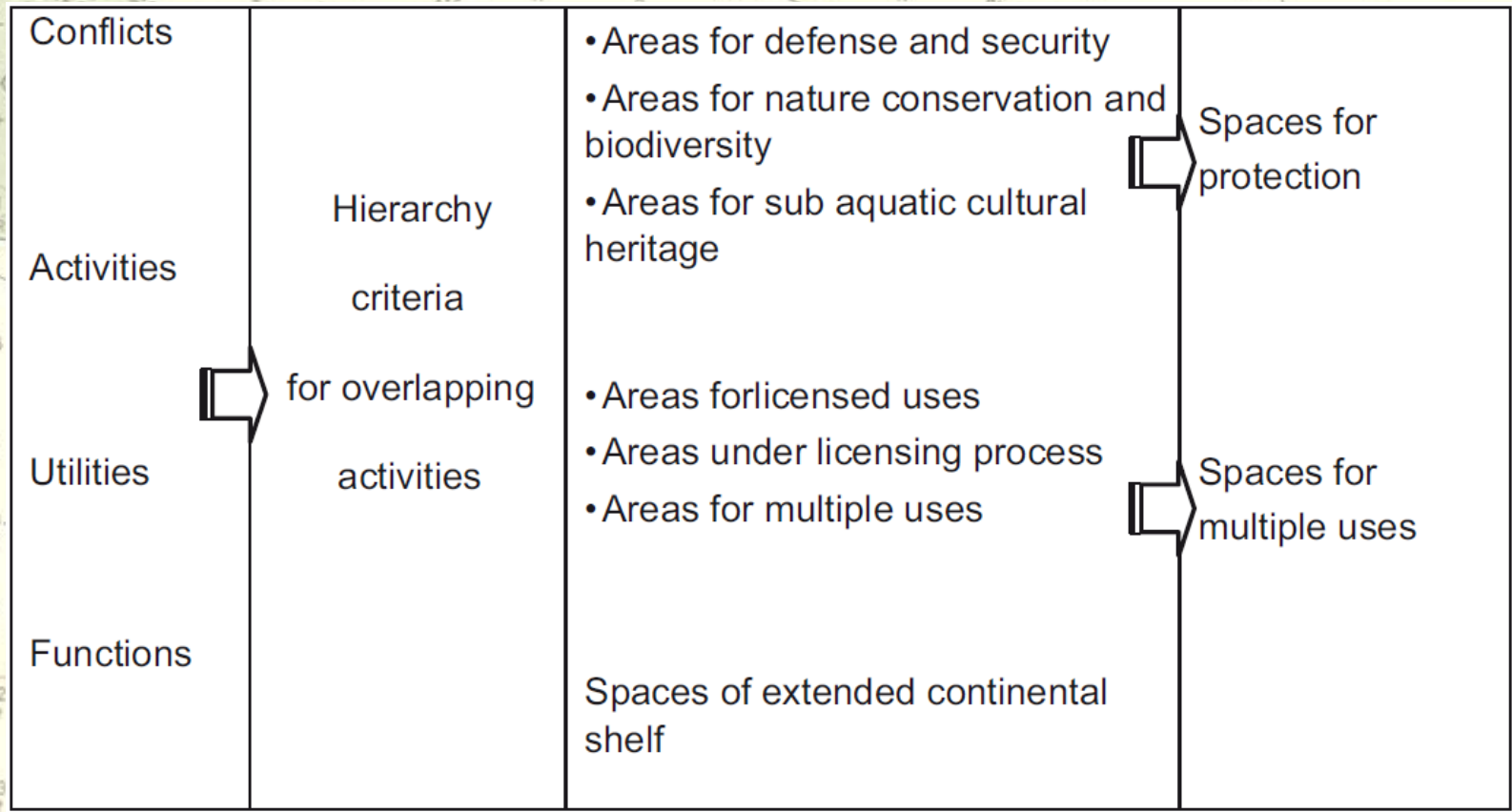
**MARITIME**

**Categories of marine resources and activities**

<b>Nature and Biodiversity Conservation</b>	Classified areas: Protected areas, Natura2000 sites, marine protected areas under the OSPAR Convention. Areas of interest for biodiversity and nature conservation: Marine Important Bird Areas, potential areas for species protected under Natura2000 network, potential areas of habitats protected under Natura2000 network.
<b>Culture and Heritage</b>	Classified areas Sub aquatic itineraries
<b>Energy and geologic resources</b>	Wave energy areas Petroleum (seismic acquisition data)
<b>Fisheries and aquaculture</b>	Fisheries Artificial reefs Aquaculture: floating devices, areas flooded with sea water (tanks)
<b>Infrastructures</b>	Costal defense construction areas Pipelines Cables
<b>Navigation</b>	Anchorage areas Navigation channels Dredging deposit areas Dredging area Harbors and marinas Pilotage areas Traffic Separation Scheme (IMO) Area to be avoided (IMO) Western European Particularly Sensitive Sea Area (IMO) Radio beacon buoy
<b>Tourism</b>	Regatta fields Other areas of nautical tourism Surf areas
<b>Defense</b>	Military exercise areas Exclusive Economic Zone Territorial sea Contiguous zone Continental shelf (outer limit)

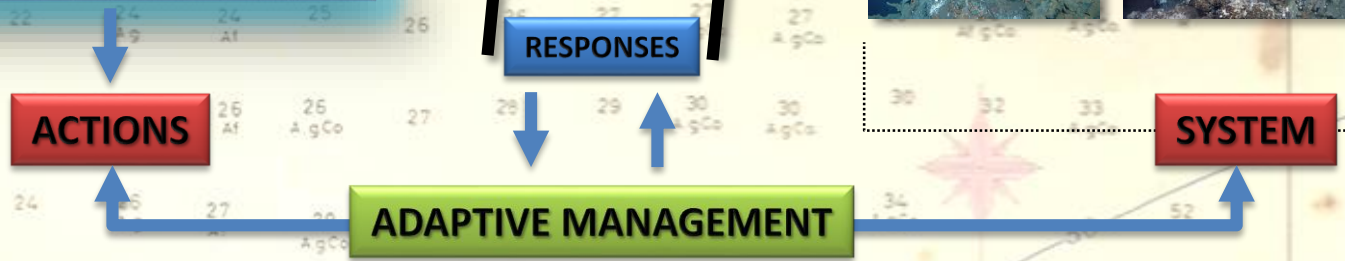
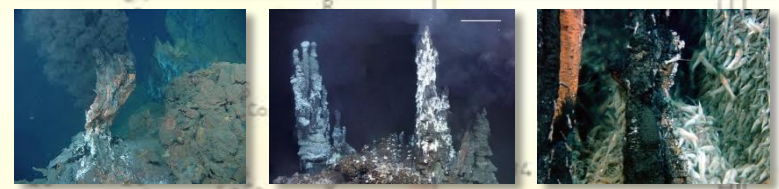
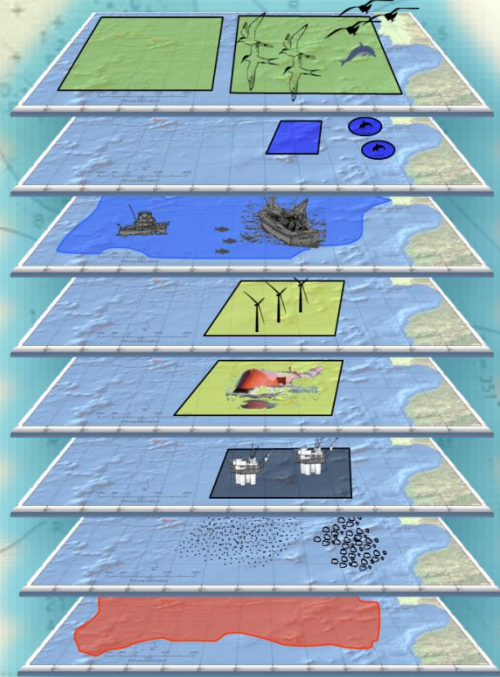
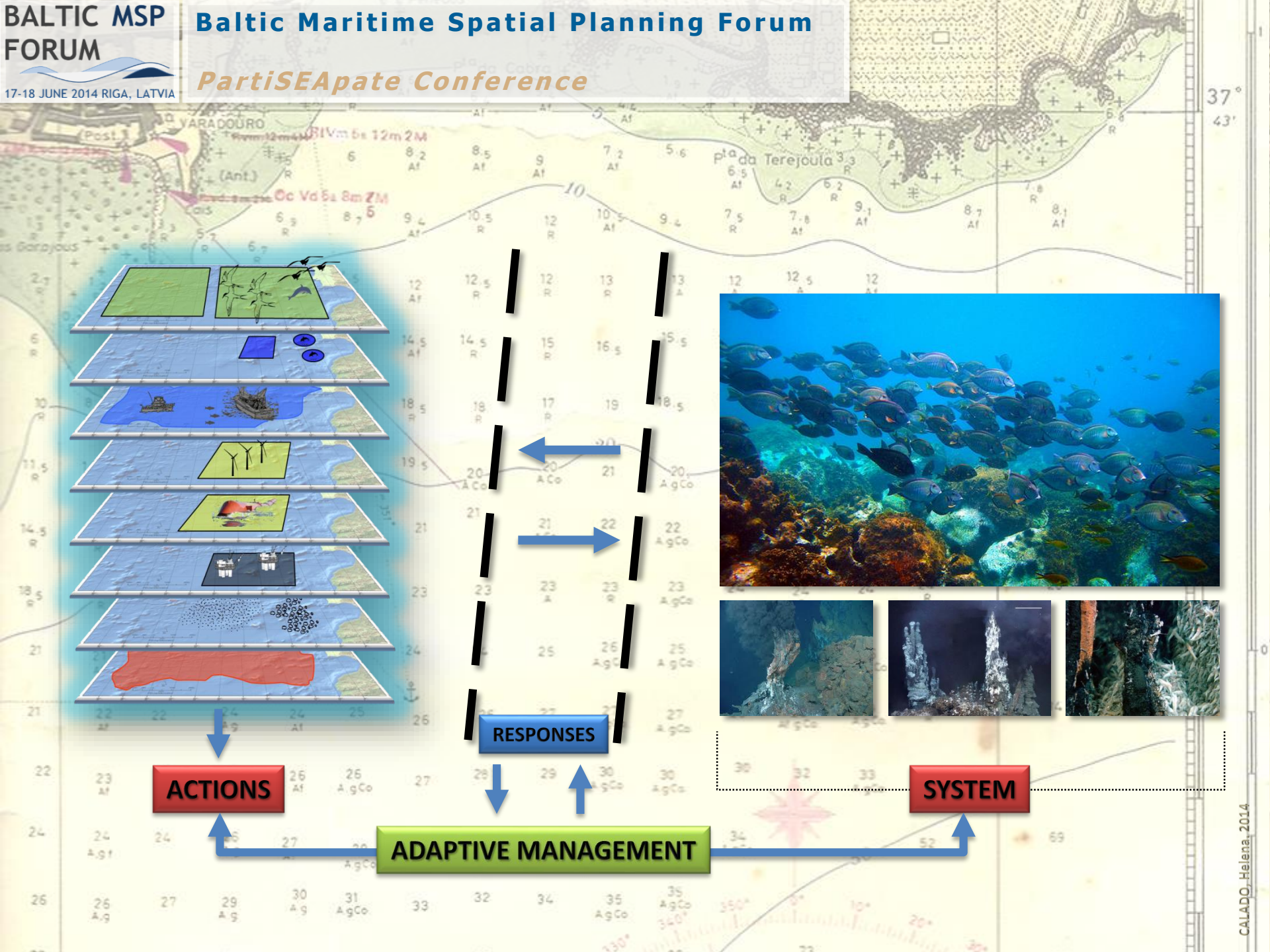


**Spatial conflict**



Source: adapted from POEM—Plano de Ordenamento do Espaço Marítimo, Volume de Síntese, Outubro de 2011, INAG (3) (in Portuguese).





## Public Participation

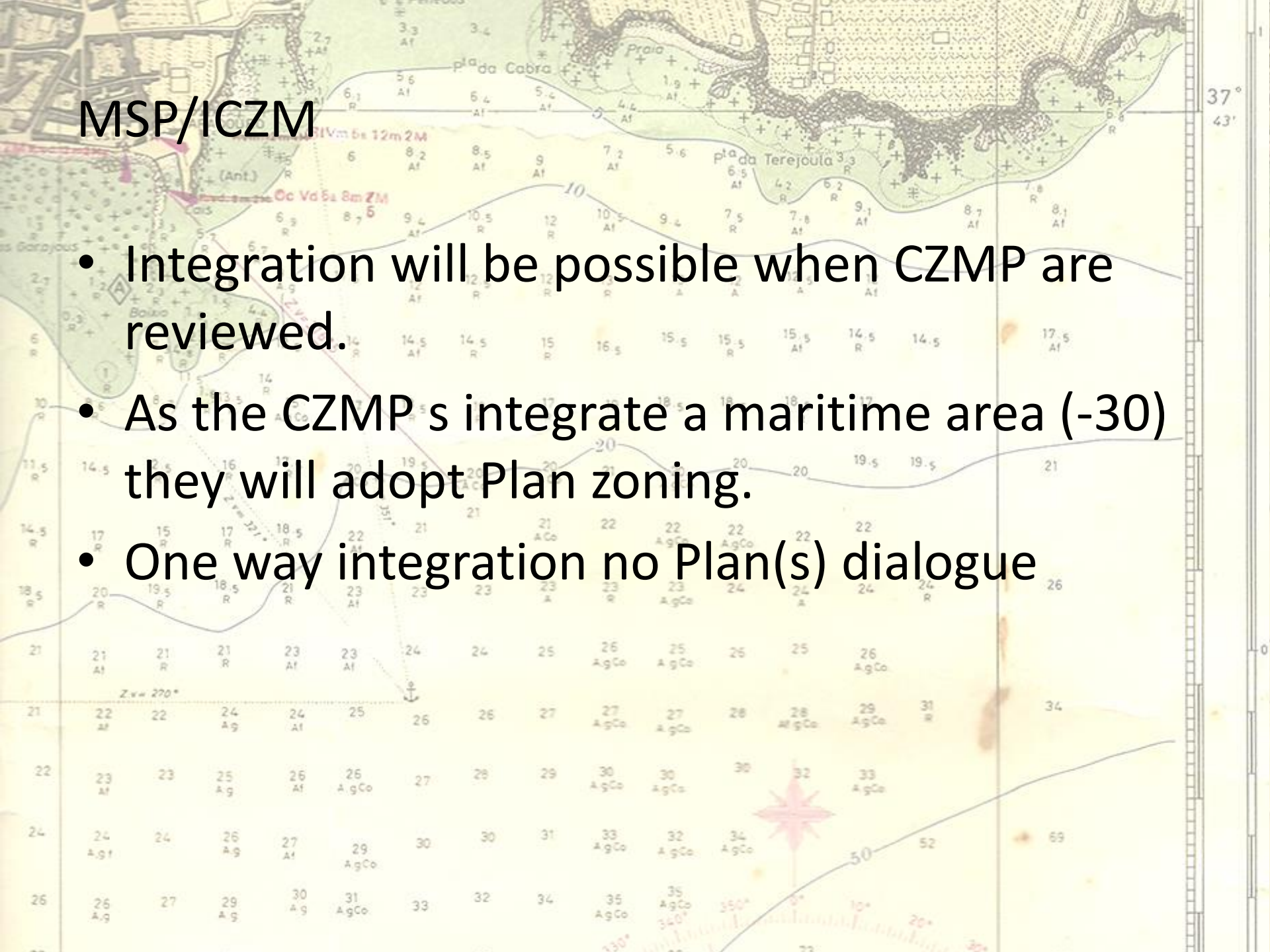
- As in other aspects the Portuguese society was not very active on participation.
- Some effort was made to involve different stakeholders but a larger and prolonged campaign would be needed

## Information

- Plan GIS database only for the existing / potential zoning shapefiles.
- According to INSPIRE but limited to information on activities,
- different types of knowledge are needed (environmental and socio-economic data on human activities, to assess status and stress on marine environment)

# MSP/ICZM

- Integration will be possible when CZMP are reviewed.
- As the CZMP s integrate a maritime area (-30) they will adopt Plan zoning.
- One way integration no Plan(s) dialogue



# Conclusions

- No difference on sectors approach (even on Nature Conservation)=**race for Space**
- Participation based only on Public Agencies=**some stakeholders felt excluded**
- No International /Cross border cooperation=**Spain?**
- Monitoring is plan-driven and no integration proposed=**Adaptive Management not possible**
- Some integration between MSP on CZ will be possible but not until CZMP revision=**“temporal territorial gap”**
- Base information is fragile and needing for integration and development=**limited GIS tools use**
- **Opposite to MSFD it failed to involve academia and researchers in a consequent way**

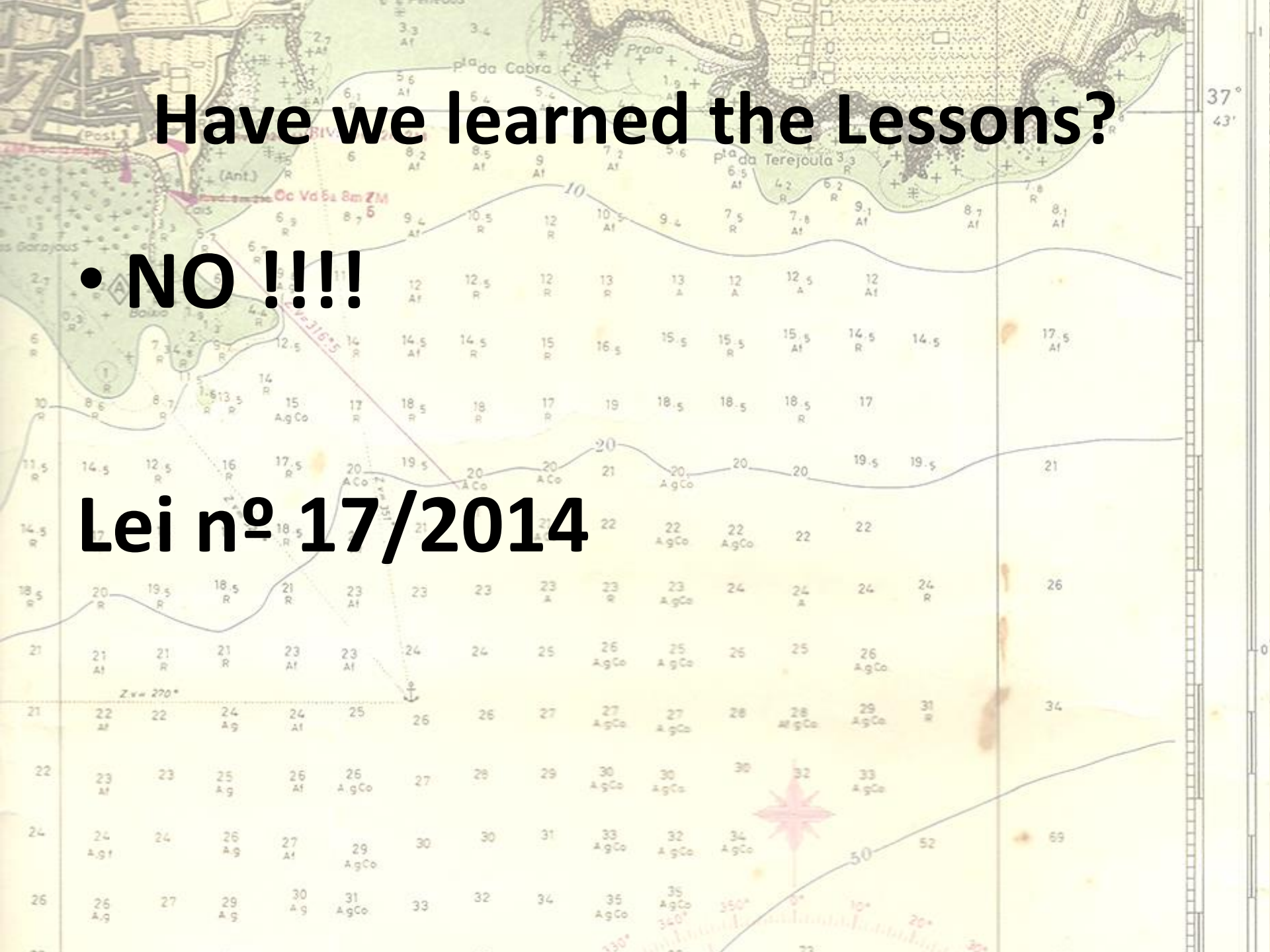
# Conclusions

- Covered all the sectors
- First time sectors negotiated
- Allows the visualization of future tendencies
- A clear view of the integration needs
- Identifies Conflict zones
- keeps in line with EU policies
- Based on National Constitutional “Identity”
- Demystified the “fear” of MSP

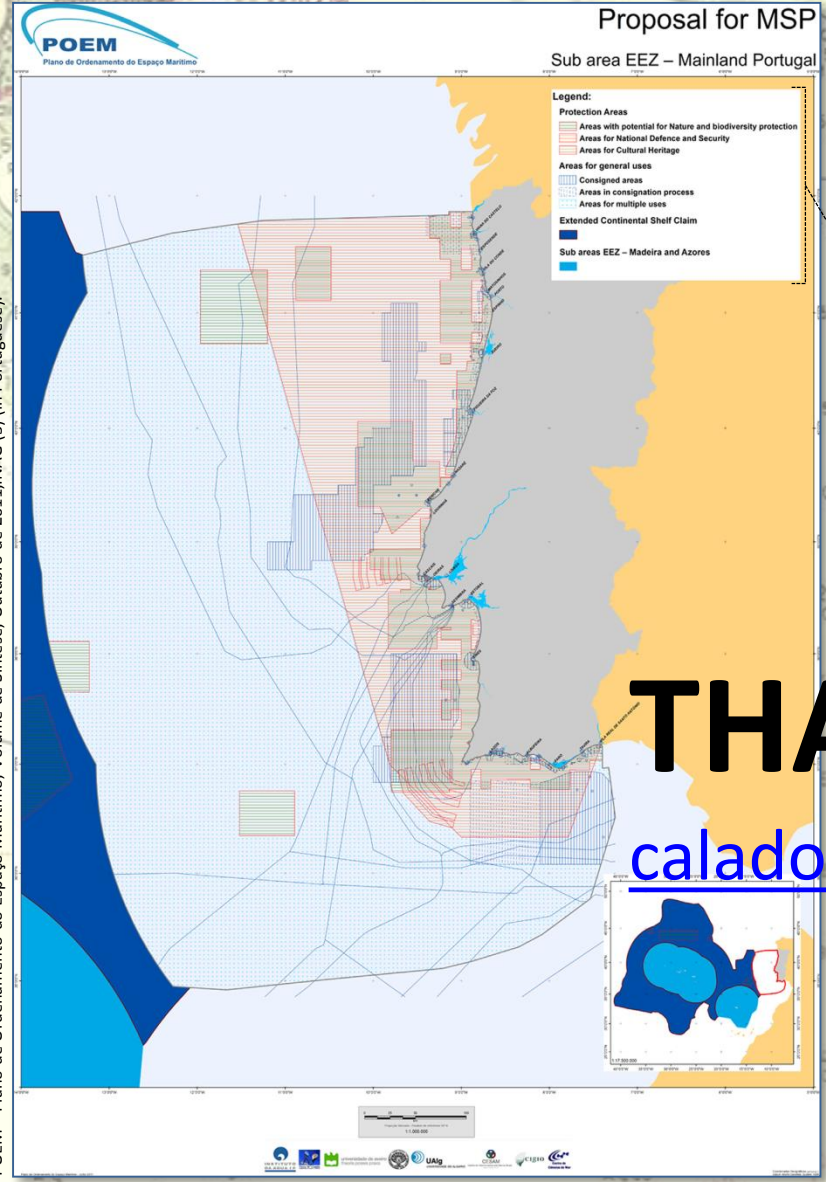
# Have we learned the Lessons?

• NO !!!!

Lei nº 17/2014



**Synthesis map of the MSP proposal**



**THANK YOU !!!**

[calado@uac.pt](mailto:calado@uac.pt)

Source: adapted from POEM – Plano de Ordenamento do Espaço Marítimo, Volume de Síntese, Outubro de 2011, INAG (3) (in Portuguese).