



Sveriges lantbruksuniversitet  
Swedish University of Agricultural Sciences

Kristina Blennow Baltic Landscape Forum  
Riga Latvia 10-11 September 2015

# **Identifying citizens' values and risk perceptions in a coastal area in Sweden using the Democratic Landscape Planning tool (DeveLoP)**

*Kristina Blennow*

*Swedish University of Agricultural Sciences, Alnarp*

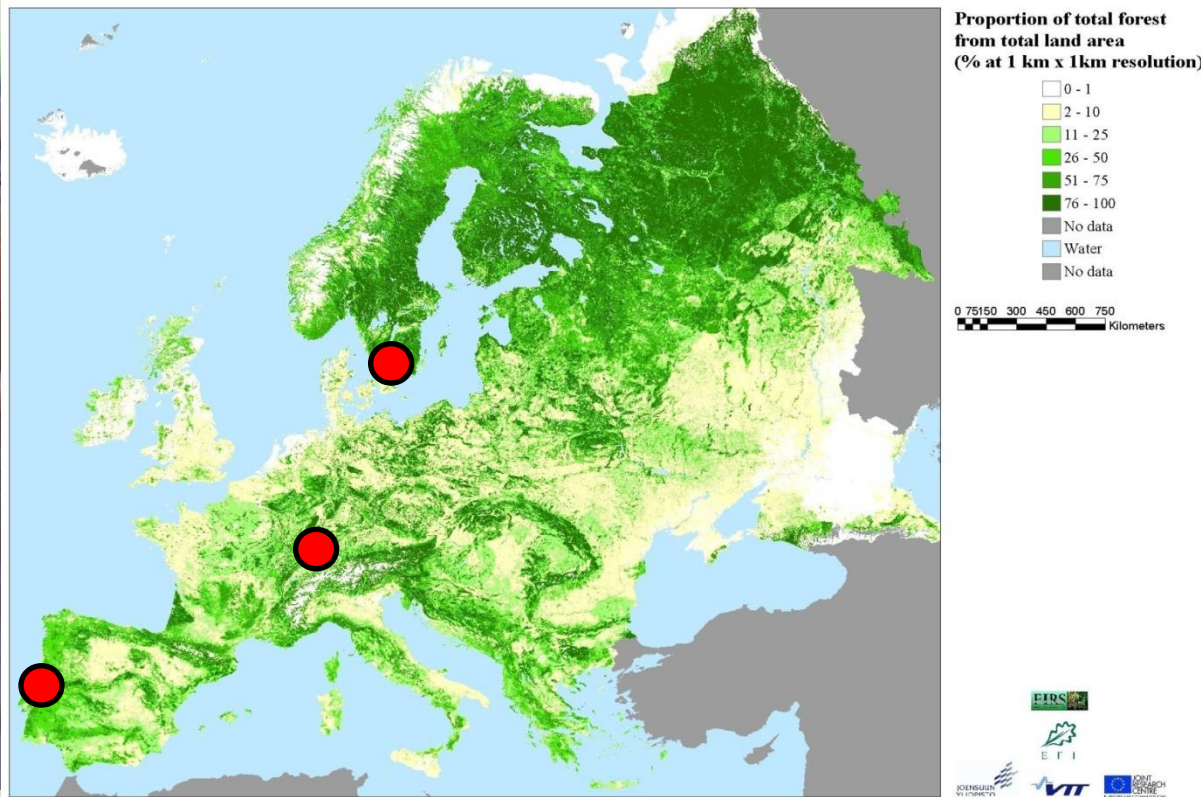


Wikimedia: Public domain

**Has he taken  
measures to  
adapt to climate  
change?**



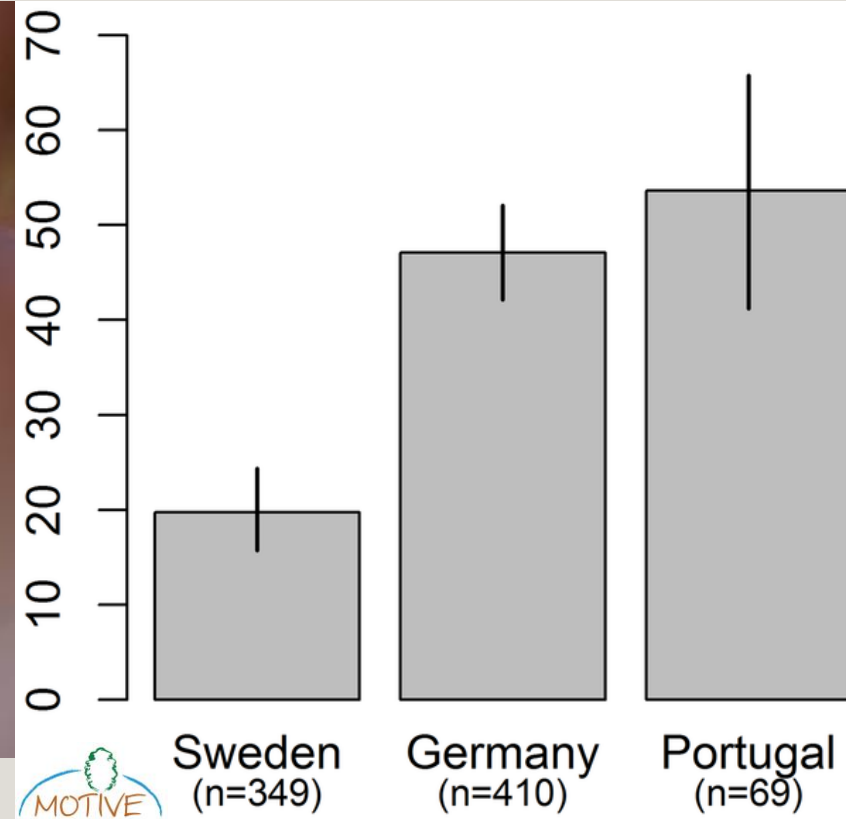
Wikimedia: Public domain



# Percentage of respondents having adapted forest management to climate change



Wikimedia: Public domain





Wikimedia: Public domain

- Strength of belief in local effects of climate change?
- Strength of belief in having experienced effects of climate change?

Accurately explains and predicts adaptation to climate change among forest owners!



Wikimedia: Public domain

## Risk perception –

crucial for explaining and predicting adaptation decisions!



Wikimedia: Public domain

## Heuristics and biases Knowledge risk





# How to analyse and measure values?



Wikimedia: Public domain



© Derek Hofmann, Creative Commons

Blennow K & Persson E (2013) Societal Impacts of Storm Damage in Living with storm damage (eds. Gardiner et al.) EFI.

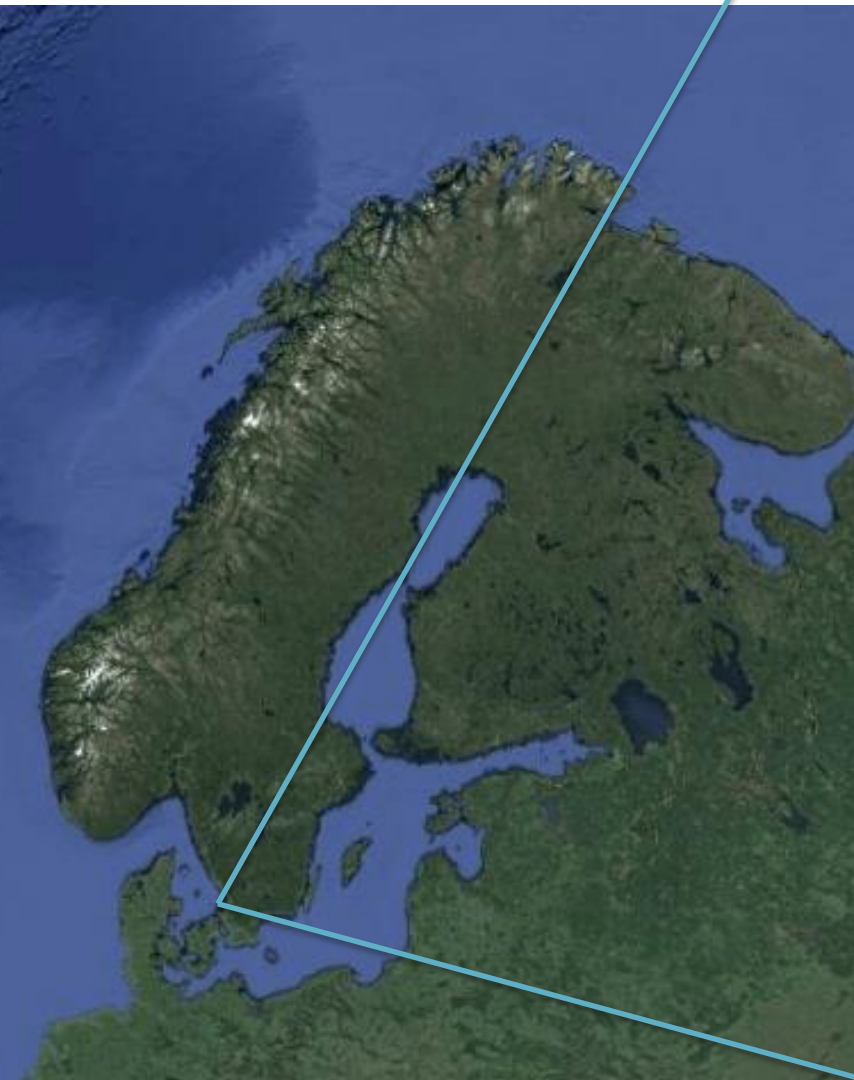
Blennow K, Persson J, Wallin A, Varemán N, Persson E (2014) Understanding risk in forest ecosystem services: implications for effective risk management, communication and planning.

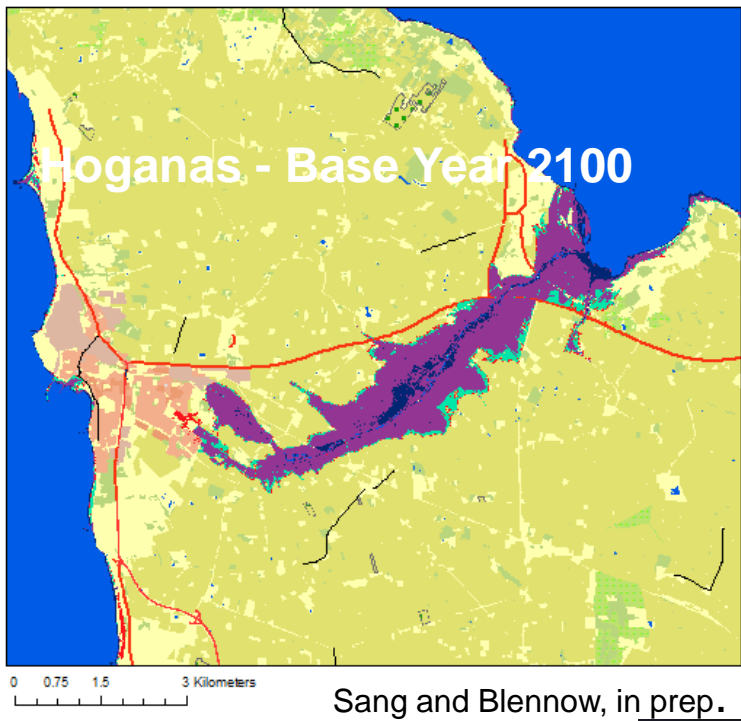
*Forestry*, 87:219-228



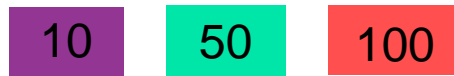
Sveriges lantbruksuniversitet  
Swedish University of Agricultural Sciences

Kristina Blenow Baltic Landscape Forum  
Riga Latvia 10-11 September 2015





Return Period (Years)



Wind &  
Wave Effect



Sea Level



# Why are these locations important to these people?

n=272

Healthy living  
**17%**

Nature has value in itself  
and for relaxation **32%**

Landscape  
experiencers  
**19%**

Economic  
Maximizers  
**3%**

The place has value  
in itself **24%**

My economy and  
the place has value in itself  
**5%**

Landscape  
experiencers **19%**

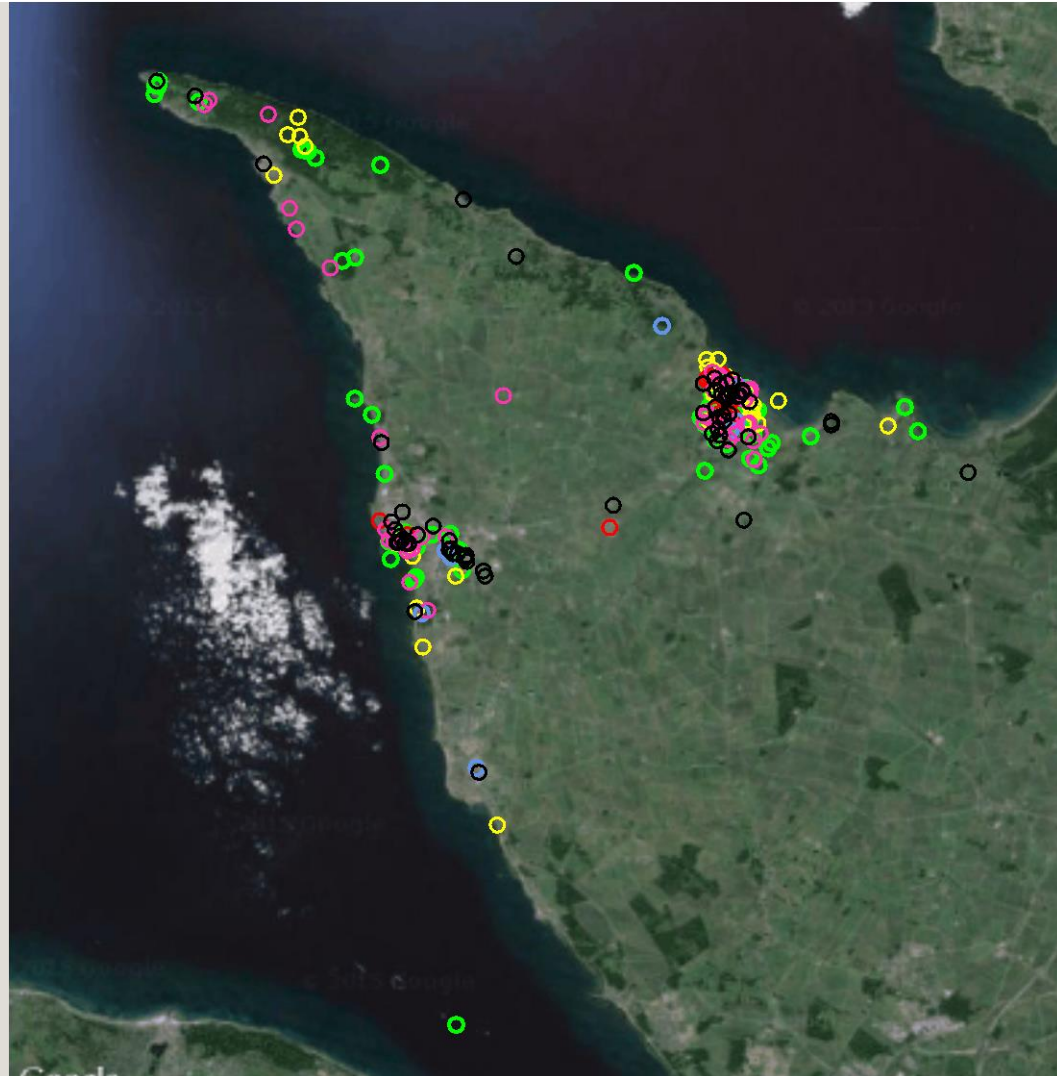
Healthy  
living **17%**

Nature as an end and  
for relaxation **32%**

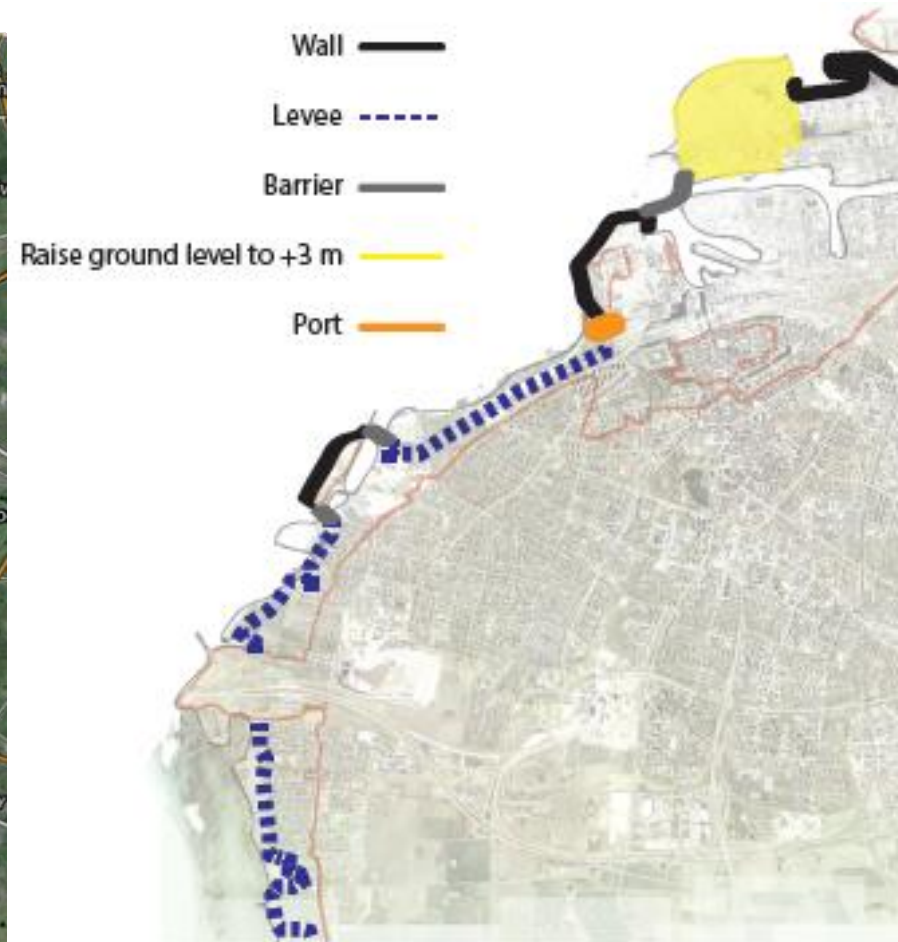
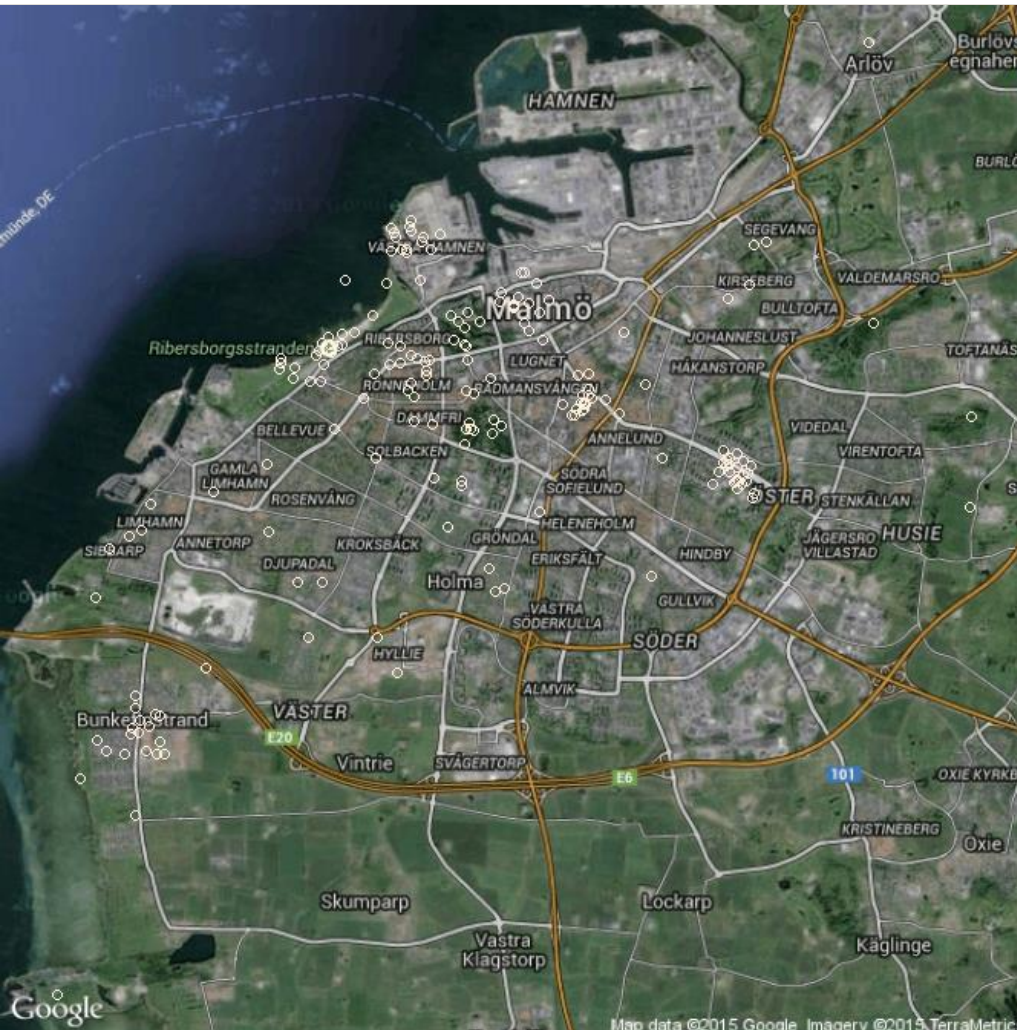
The place has value  
in itself **24%**

Own economy + the  
place has value in itself **5%**

Economic maximisers **3%**



## Most important places in Malmö, Sweden



# Who's values are at risk?



# Understanding risk for effective risk management, communication, planning and policy

- Information on beliefs and desires
- Knowledge of decision strategies
- Open environment to promote learning
- Avoid taking knowledge risk
- Consider the distribution of risk and benefit







Sveriges lantbruksuniversitet  
Swedish University of Agricultural Sciences

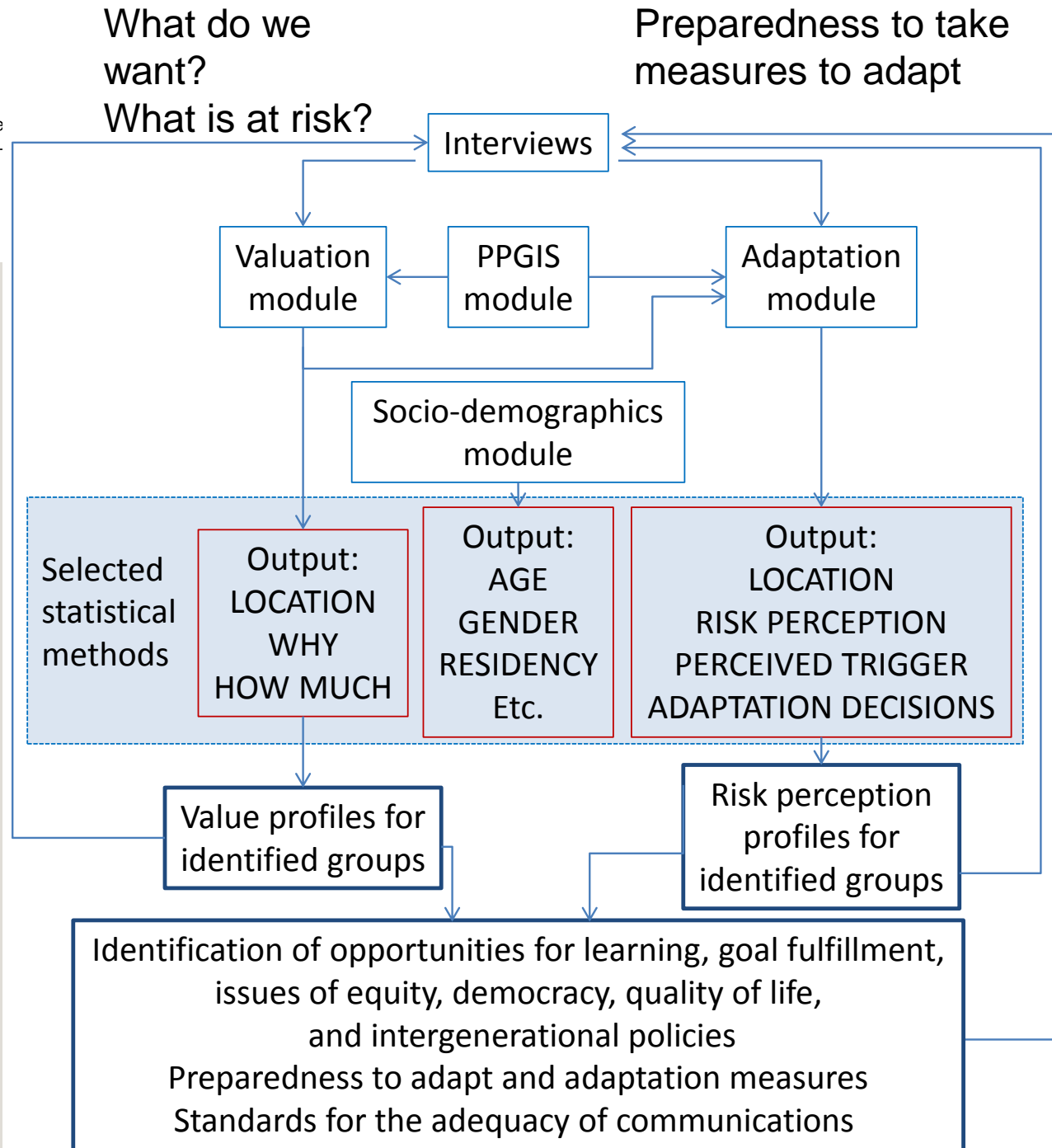
Kristina Blenow Baltic Landscape Forum  
Riga Latvia 10-11 September 2015

**How can we make this come true?**

# DeveLoP

Kristina Blennow,  
Erik Persson (SLU),  
Johannes Persson  
(Lund University, Sweden),  
in prep.

Partly developed in the project *Rising sea level – the planning and design of an uncertain landscape* by the Swedish Civil Contingencies Agency (to Tomas Germundsson, Carola Wingren and Kristina Blennow)



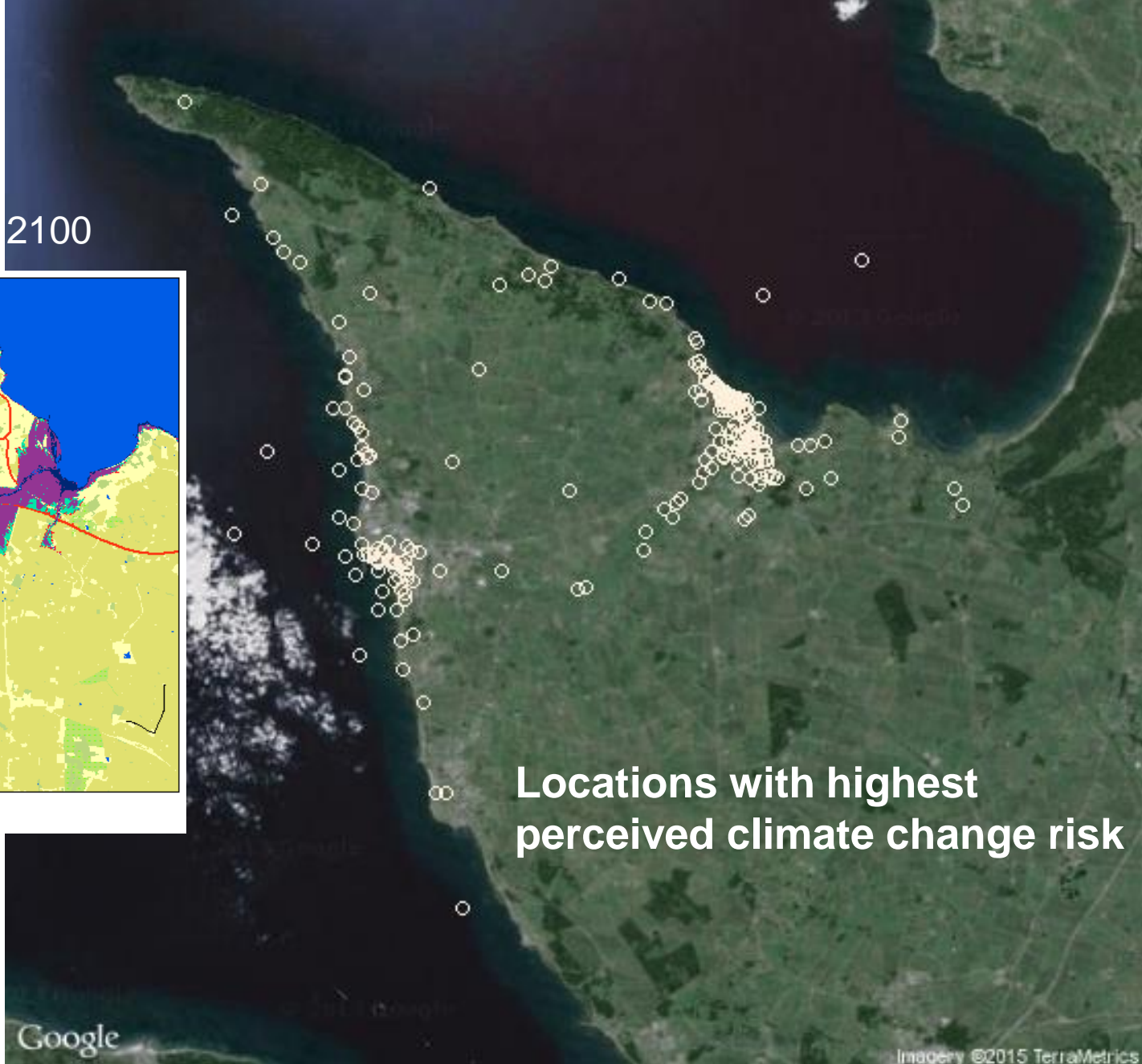
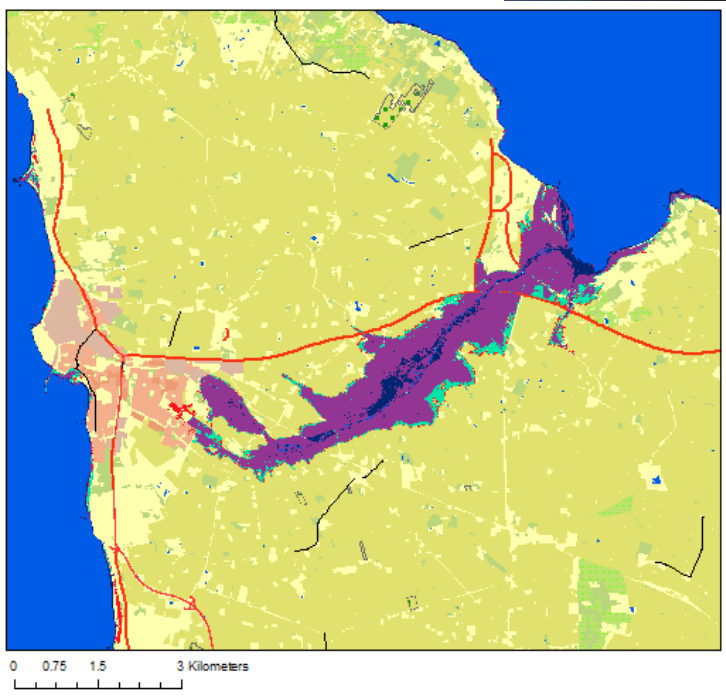
# **DeveLoP provides information for effective communication, planning and policy**

- Assesses peoples' preparedness for adaptation
- Identifies what information people need to make wiser decisions
- Assesses peoples' values and provides support for planning



**Thank you!**

# Hoganas - Base Year 2100



Locations with highest perceived climate change risk

Google

Imagery ©2015 TerraMetrics



Return Period (Years)

