



MAA-AMET

# Transboundary issues in Estonian context

Maili Hirlak

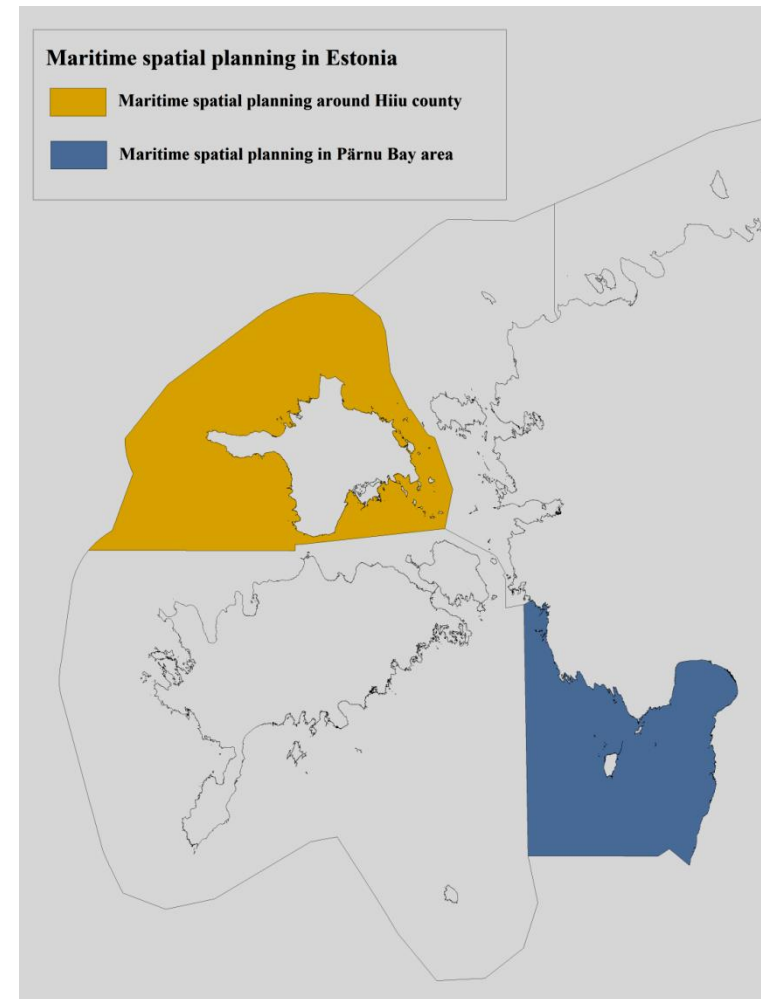
Estonian Land Board

Hamburg 20.01.2016



# MSP compilers and timeline

- **Hiiumaa County – will be established near future**
- **Pärnu county – during 2016**
- **Comprehensive Maritime Planning Methodology 2015**
- **Ministry of Finance - All other Estonian waters starts 2017**



# Nature protection

- Nature conservation –  
Estonian Nature Information System (EELIS),  
Estonian Land Board (ELB)  
INSPIRE service
- Flora and fauna –Universities and Institutes –  
project-based data: where? what format? what  
content?
- Environmental Impact assessment reports –  
Ministry of the Environment. Where? What shape?  
What content?







# Marine food supplies

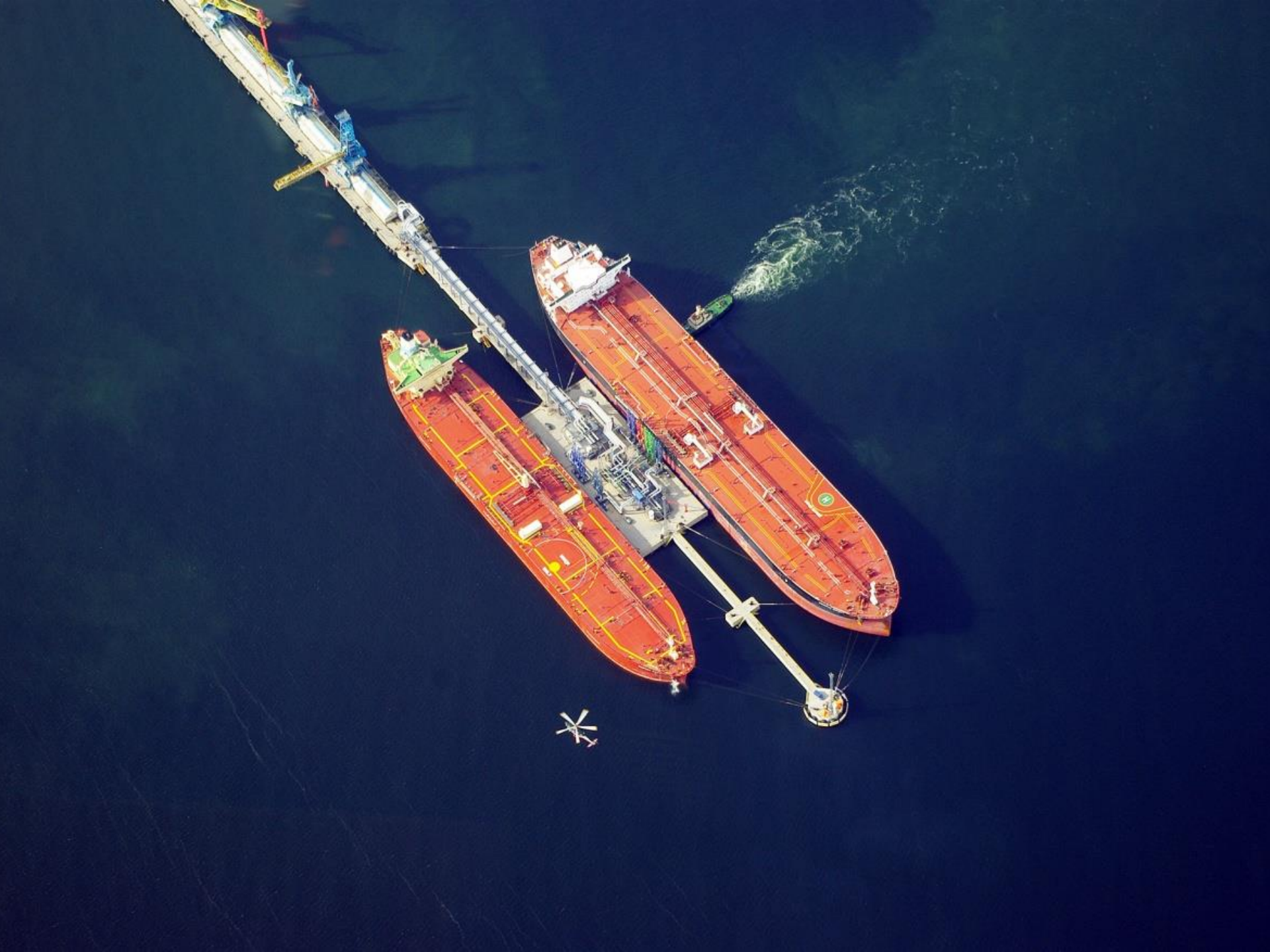
- **Fishery** - Ministry of Rural Affairs - statistical data; Marine Institute (MI) analysing the data and putting the data to geographical space. Output is the most important coastal and trawl fishing areas.
- **Important areas for fish population** (essential fish habitats, spawning). There is a webservice for local use/GIS format files – no service.
- **Aquaculture** - There is no in Estonian sea area.



# Maritime traffic

- MA Maritime transportation and harbours
  - MA → ELB → INSPIRE service
- Lighthouses, navigational lines etc
  - MA → ELB → INSPIRE service
- Transport network on the land: railways and roads transportation –Road Administration → ELB → INSPIRE service







# Energy infrastructure

- **Cables - MA – maritime security**
  - **ELB - future marine cadastre, restrictions**
- **Pipeline – There is no transboundary in Estonian waters at the moment**
- **Windfarms – There is no existing windfarms in sea area. There are in Pärnu and Hiiumaa county marine plannings areas. County administrations. GIS format, no services.**
- **There are 7 applications waiting in Technical Regulatory Authority (TRA) where MSP not existing yet. No GIS capability.**





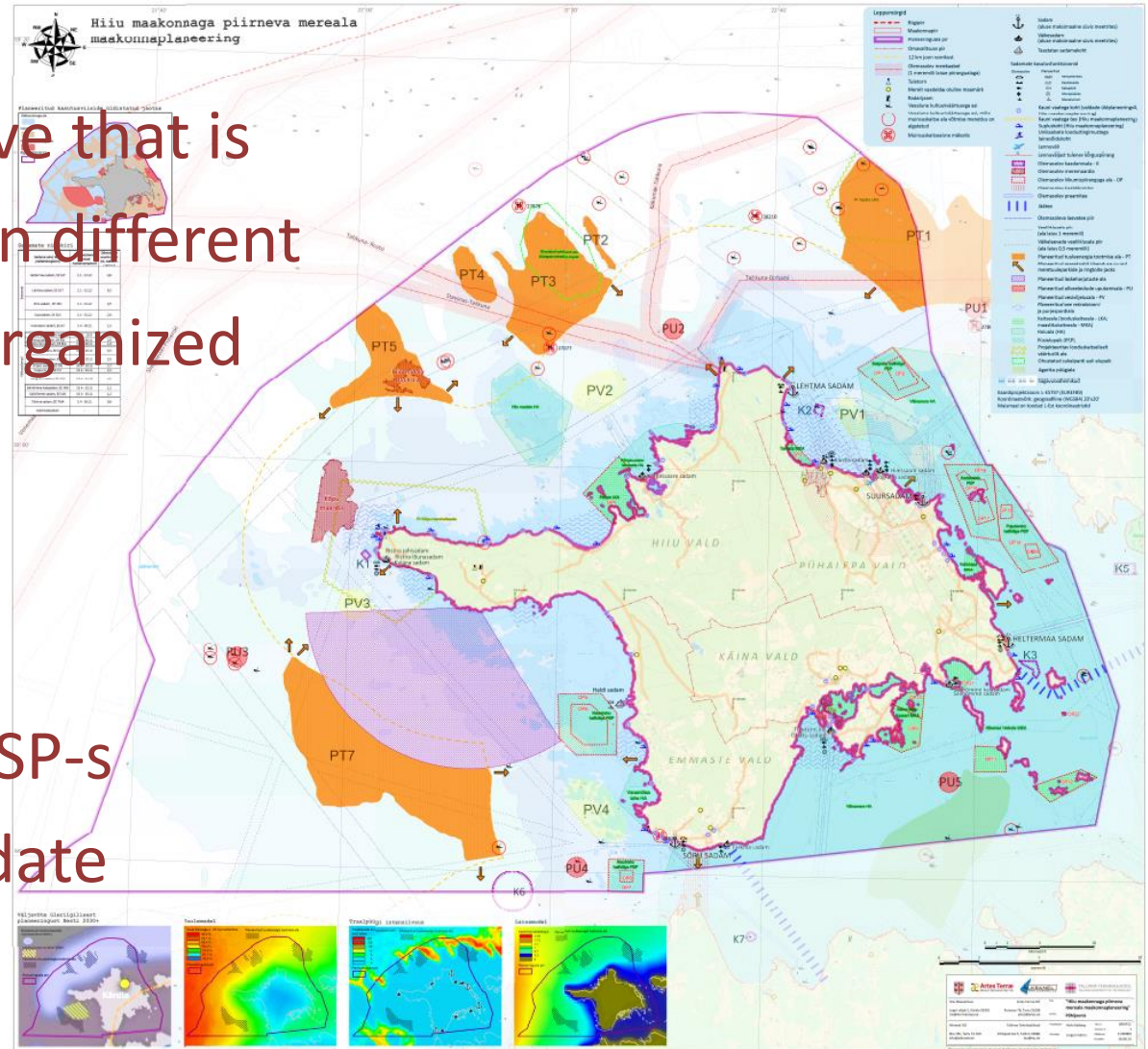
# Military and border-related issues

- Military exercise areas – Navigational chart, National plan. MSP national contact point issue.
- Border-issue – possible to get GIS data.



# Planned data

- All the data above that is planned stages in different levels – its not organized and available.
- 2 MSP data,
- MSP output as input to other MSP-s has to be up to date





# We have

Some data available INSPIRE services 02.2016

<http://esri-dev.inspire.local/services>

Geoportal where we can collect besides INSPIRE services other data too.



MAA-AMET



Home

Metadata

Services

About INSPIRE

Data owner

Map

Sign up

Help

Estonian Land Board Geoportal

Which software is suitable for  
WMS

## Services

For the use of spatial data, network services have been created through which it is possible to discover, transform, view and download data. In order to make spatial data interoperable across Europe, common specifications and requirements have been adopted for network services.

The network services are divided into:

- discovery services
- view services
- download services
- transformation services

Discovery services can be used from the menu Metadata. View services can be used, i.e. spatial data can be viewed in the geoportal's map window, which is under the menu Map. View services (WMS services) can be used in other geoportals and GIS softwares independent of the Estonian geoportal.

With which software and how it can be done? Guidelines are provided under How to use WMS services.

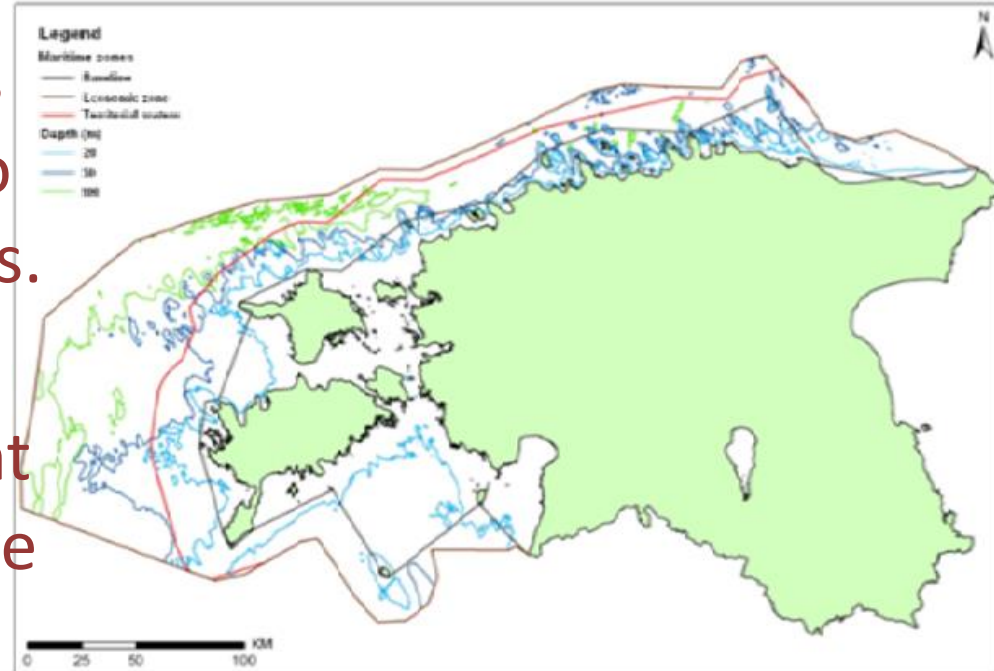
### Discovery Service

Discovery Service address: <http://inspire.maaamet.ee/geoportal/csw/discovery?request=GetCapabilities&Service=csw&language=eng>



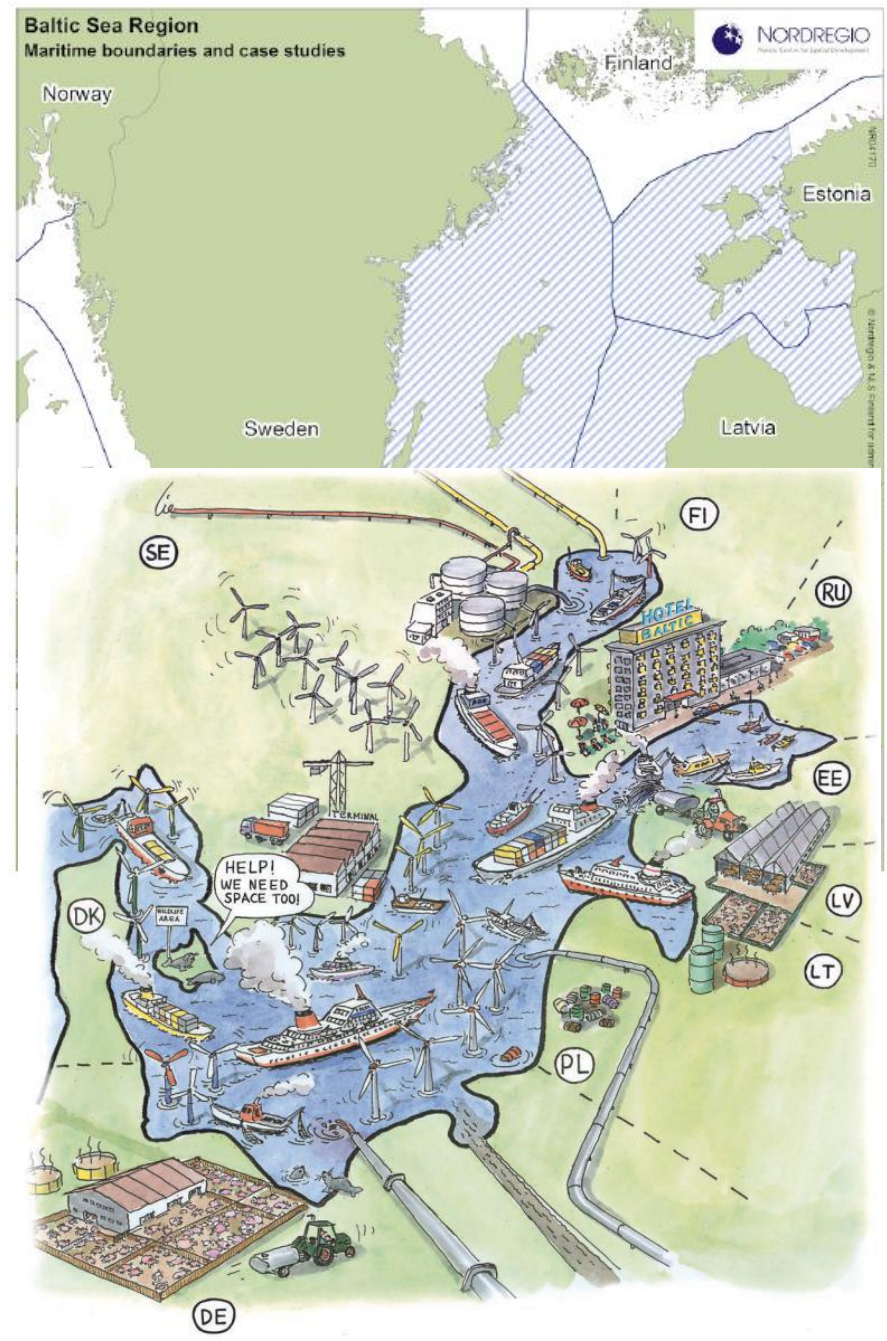
# We need

- More legislation or political agreement inside country : What institution collects all services together, so that the interested person can get the all data links from one point and who administrate the process.
- There is prepared a regulation about content of planning – Will it solve the MSP problem?;
- Find out what to do if data owners are not able or interested to built the services on their own;



# We need

- What exactly is needed for MSP in every layer – shape, attributes, metadata;
- If to built up service, then how the data has to be presented;
- How is processed the neighbour state MSP, how to solve the financial questions, if there is not open data.





# Our point of view for future

- There will not be special MSP input data portal in Estonia
- Transboundary data availability through contact point – until the data is available through services.
- The marine cadastre
- There is no property in the sea in Estonia, but there can be long term use – the property should be registered to cadastre
- There are restriction – cables, marine lines, dumping, etc – these should be registered to cadastre.

Danke!  
Kiitos!  
Ačiū!

Спасибо!  
Paldies!  
Tak!

Tack!  
Dziękuję!  
Tänan!



Maili Hirlak  
[Maili.Hirlak@maaamet.ee](mailto:Maili.Hirlak@maaamet.ee)  
+372 665 0610  
Estonian Land board

:  
etsanurk  
n Land Board