



BaltSeaPlan

Interreg IVB Project 2009 - 2012

**Towards sustainable planning of
Baltic Sea space –
Draft transboundary spatial plans**

Nico Nolte / BSH



BUNDESAMT FÜR
SEESCHIFFFAHRT
UND
HYDROGRAPHIE

What has BaltSeaPlan been dealing with ?

Stocktaking:

- compilation of current sea uses
- identification of data gaps
- Generation of new GIS datasets

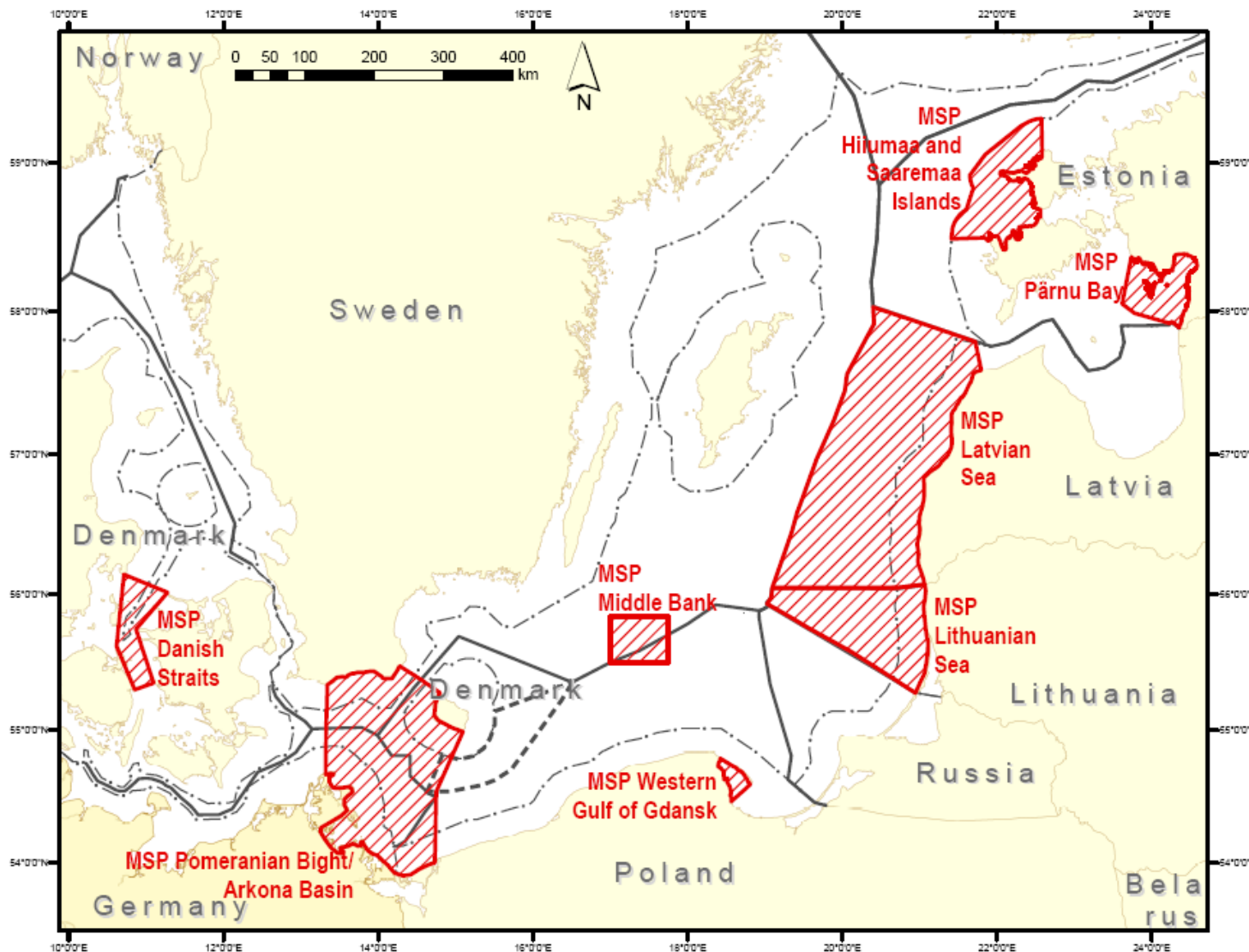
Data exchange and harmonisation according to the EU INSPIRE Directive;
Modelling paper

8 regional and cross-border pilot Maritime Spatial Plans
different priorities / emphasis

Analysis of national priorities for offshore development =>
gaps / inconsistencies ? =>
Recommendations on integration of
MSP tools in National Maritime Strategies

Spatial vision 2030 for the Baltic Sea => conditions for achieving sustainable planning of Baltic Sea space

Capacity building / further development of
Maritime Spatial Planning Tools



MSP Pilot Projects

 Pilot Areas

Boundaries

--- Territorial Sea
— Continental Shelf/EEZ
--- unclear legal status

Map Projection: Mercator (54°N), WGS 84
BSH - 22.09.2011



2009 Planning the future
2012 of the Baltic Sea



Part-financed by the European Union
(European Regional Development Fund)

Pilot Project

Pomeranian Bight / Arkona Basin

INITIAL SITUATION

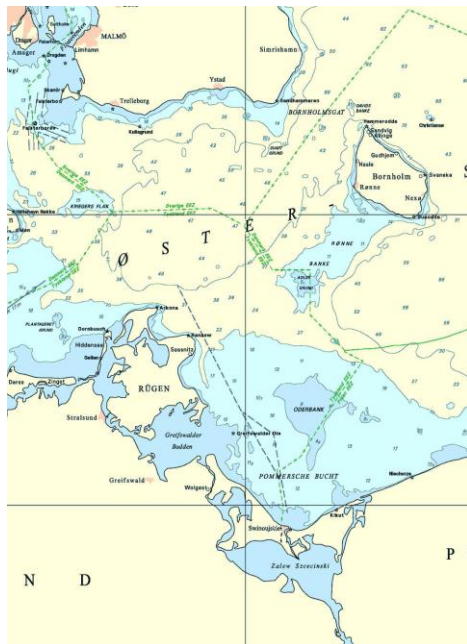
- One of two **transnational** pilot projects
- Four participating countries with respective various planning systems, and various states of implementing MSP planning authorities and legislation
- No comprehensive Maritime Spatial Plans for Territorial Sea and EEZ in Denmark, Sweden and Poland (except for MSP Gdansk Bay in Inland Waters) yet
- Maritime Spatial Plans in effect in Germany - for Territorial Sea (Mecklenburg-Vorpommern) and EEZ (BSH)

Getting started



Basics

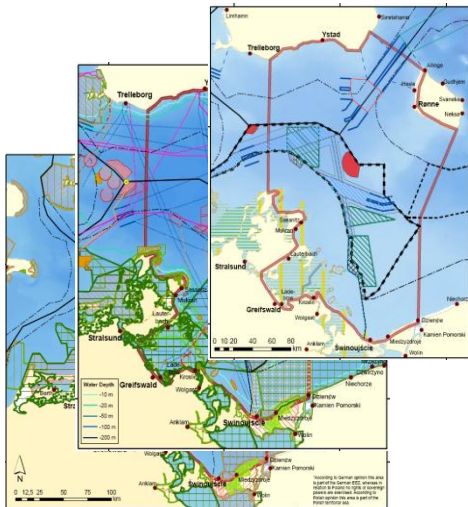
- agreement on delineation of pilot project area
- agreement on main issues to be taken in to consideration within Maritime Spatial Planning: shipping, offshore wind energy, sand and gravel extraction, fishery and nature conservation
- further issues: submarine cables, pipelines, tourism



Stocktake

Basics

- compilation of data on the marine environment
- compilation of data on human uses
- visualisation of existing spatial planning regulations



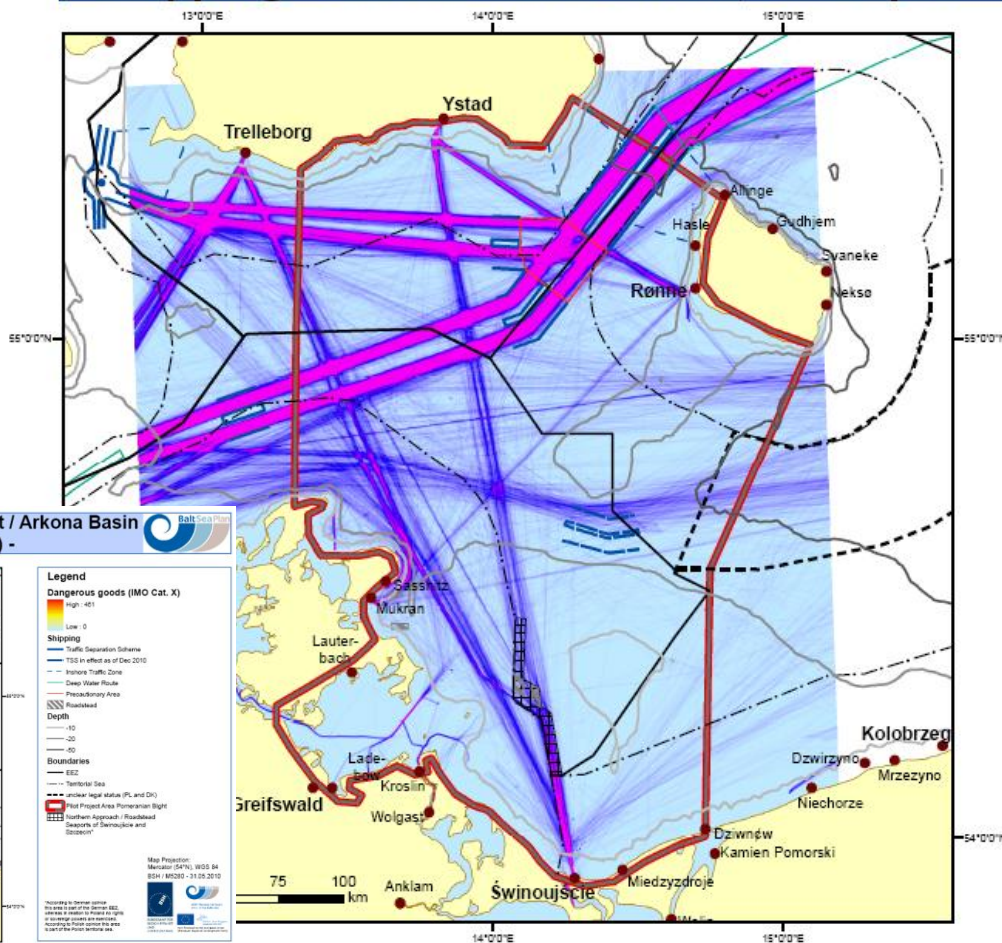
Stocktake

Determination of Unique Socioeconomic Features

- **Integrated Assessment of Land - Sea relations - Determination of most important and common features of the region - with regard to the project area:**
 - very important **maritime transport / traffic area** - both transit (East - West) and European North-South link via regional ferry lines
 - strong and economically very significant **tourism sector**, focussing on coastal / island tourism and water sports / leisure sailing
 - strong **maritime economic sector**, ports industry, shipping, ship building
 - important **fishery** and fish processing, **agriculture** and food processing industries

Stocktake

Pilot Project Area - MSP Pomeranian Bight / Arkona Basin - Shipping: Vessels more than 2,5 m depth -



Legend

Vessels more than 2,5 m depth



Source AIS-Data: Swedish Maritime Administration (accumulated data - 29 days from Jun., Jul., Oct., Nov. 2009)

Shipping

- Traffic Separation Scheme
- TSS in effect as of Dec 2010
- Inshore Traffic Zone
- Deep Water Route
- Precautionary Area
- Roadstead

Depth

- -10
- -20
- -50

Boundaries

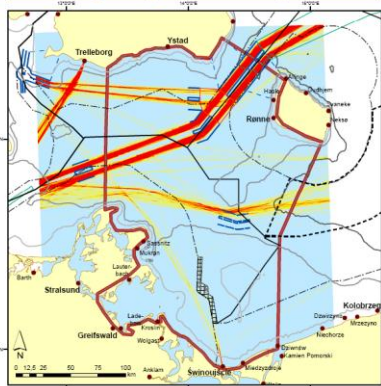
- EEZ
- Territorial Sea
- unclear legal status (PL and DK)
- Pilot Project Area Pomeranian Bight
- Northern Approach / Roadstead
- Seaports of Swinoujście and Szczecin*

Map Projection:
Mercator (54°N), WGS 84
BSH / M5280 - 31.05.2010



*According to German opinion this area is part of the German EEZ, whereas in relation to Poland no rights or sovereign powers are exercised. According to Polish opinion this area is part of the Polish territorial sea.

Pilot Project Area - MSP Pomeranian Bight / Arkona Basin - Shipping: Dangerous Goods (IMO Cat. X) -



Legend

Dangerous goods (IMO Cat. X)

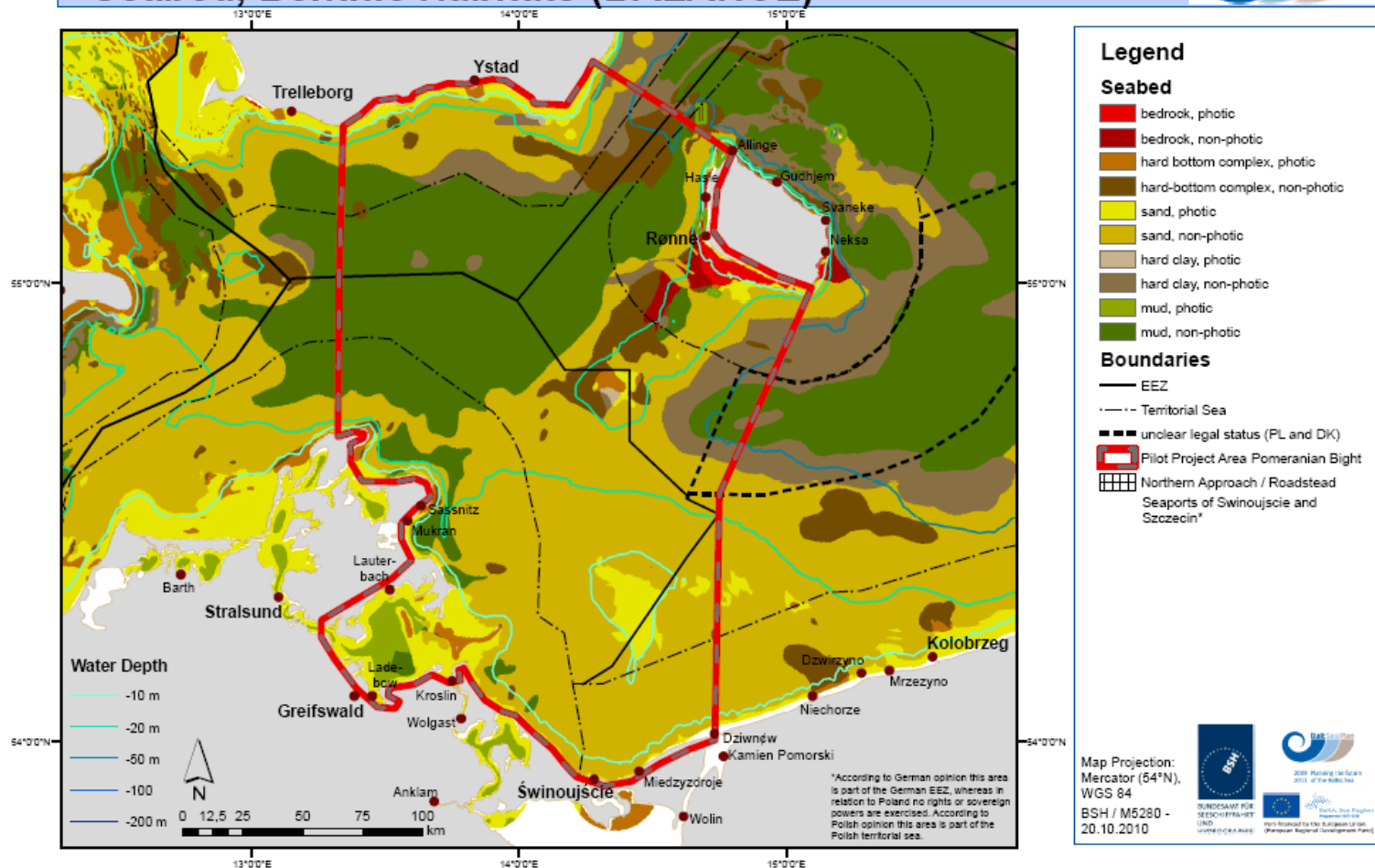


- Traffic Separation Scheme
- TSS in effect as of Dec 2010
- Inshore Traffic Zone
- Deep Water Route
- Precautionary Area
- Roadstead

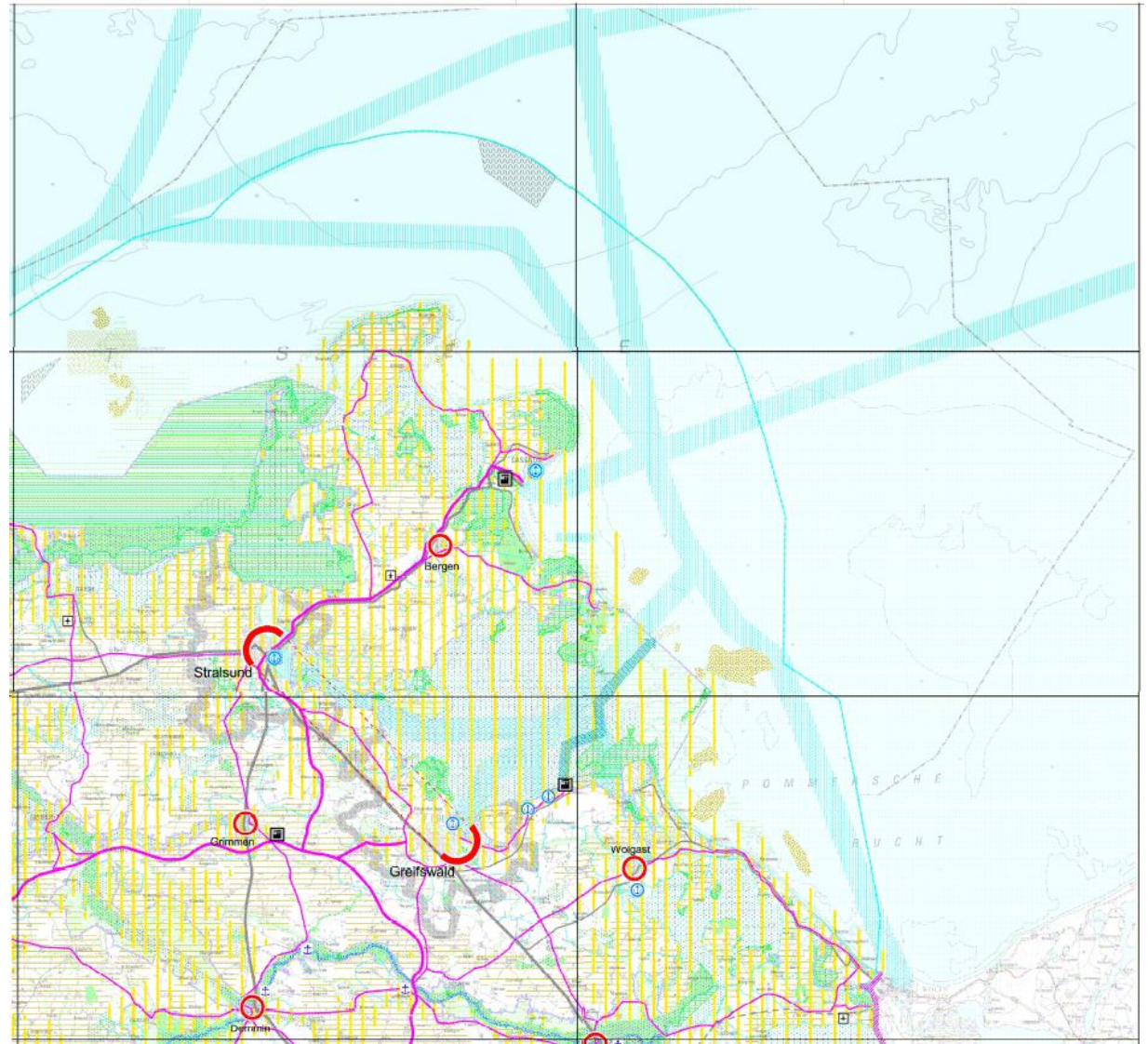
- EEZ
- Territorial Sea
- unclear legal status (PL and DK)
- Pilot Project Area Pomeranian Bight
- Northern Approach / Roadstead
- Seaports of Swinoujście and Szczecin*

Map Projection:
Mercator (54°N), WGS 84
BSH / M5280 - 31.05.2010

Pilot Project Area - MSP Pomeranian Bight / Arkona Basin - Seabed, Benthic Habitats (BALANCE) -



Section of
Spatial
Development
Plan for
Mecklenburg-
Vorpommern
(2005) -
encompassing
maritime
space within
12nm-zone /
inland waters
and territorial
sea)



The map displays the Exclusive Economic Zone (EEZ) of the German Bight, bordered by Denmark, Sweden, and Poland. Key features include the coastal waters of Schleswig-Holstein and Hamburg, the Kiel Canal, and the North Sea. The map is overlaid with various maritime zones and regulations, including shipping lanes, pipelines, research areas, and natural resource zones. A legend on the right side provides a detailed key for these zones, categorized into Regulations, Shipping, Pipelines, Research, and Natural Resources. The legend also includes a scale bar and a north arrow. A small inset map in the bottom left corner shows the location of the German Bight within the North Sea.

Legend:

- Regulations**
 - Shipping
 - Priority Area for Shipping
 - Reservation Area for Shipping
 - Pipelines
 - Reservation Area for Pipelines
 - Submarine Cables
 - Cable (Detail A)
 - Research
 - Reservation Area for Research
 - Other
 - Priority Area for Offshore Wind Energy
- For Information only**
 - Shipping
 - Traffic Separation Scheme
 - Deep Water Route
 - Procedural Area
 - Natural Resources
 - Geological and Mineral Exploitation (good, license)
 - Pipelines
 - Natural Gas (planned)
 - Submarine Cables
 - High Voltage Cable (in Use)
 - High Voltage Cable (approved)
 - Gas Cable (in use)
 - Gas Cable (out of use)
 - Energy
 - Approved Windfarm
 - Nature Conservation
 - Nature 2000 - SAC Habitat Directive
 - Nature 2000 - SPA Bird Directive
 - Military Use
 - Military Exercise Area
 - Miscellaneous
 - Area of potential Platform Sectors
 - Measurement / Converter Platforms
 - Boundaries**
 - Territorial Sea
 - Continental Shelf EEZ
 - International Border
 - Planning Areas**
 - Boundaries of Planning Area
 - Other**
 - North Sea Approach Strategy of Schleswig-Holstein and Hamburg (Germany)

Scale: 0 5 10 20 30 40 km

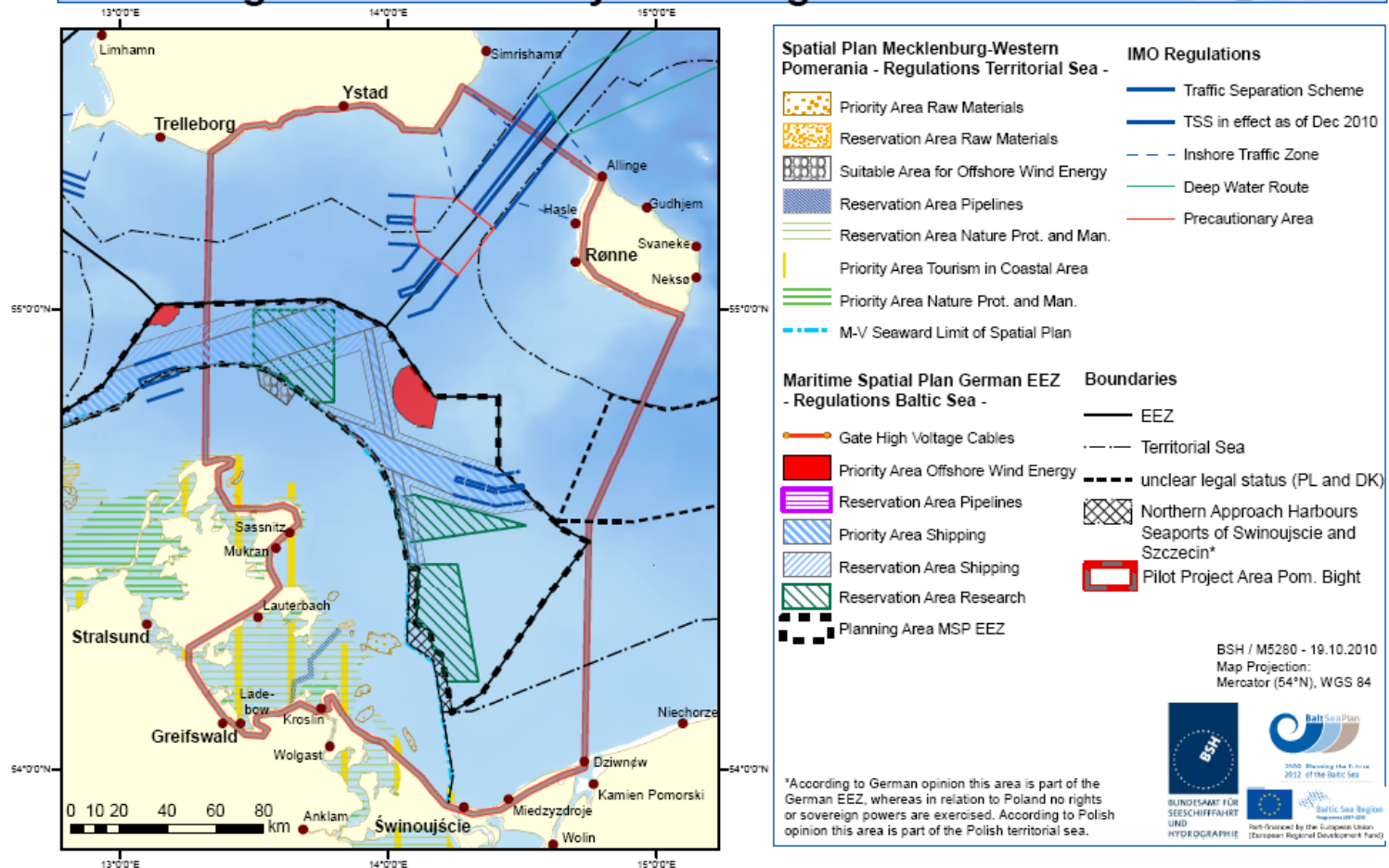
North Arrow: N

Inset Map: Shows the location of the German Bight within the North Sea.

Text: This map is not covered by the Spatial Plan because of conflicting legal positions. Due to the complexity of this area, it is part of the German Bight, which is subject to the Public Law on the North Sea and is subject to the Public Law on the North Sea.

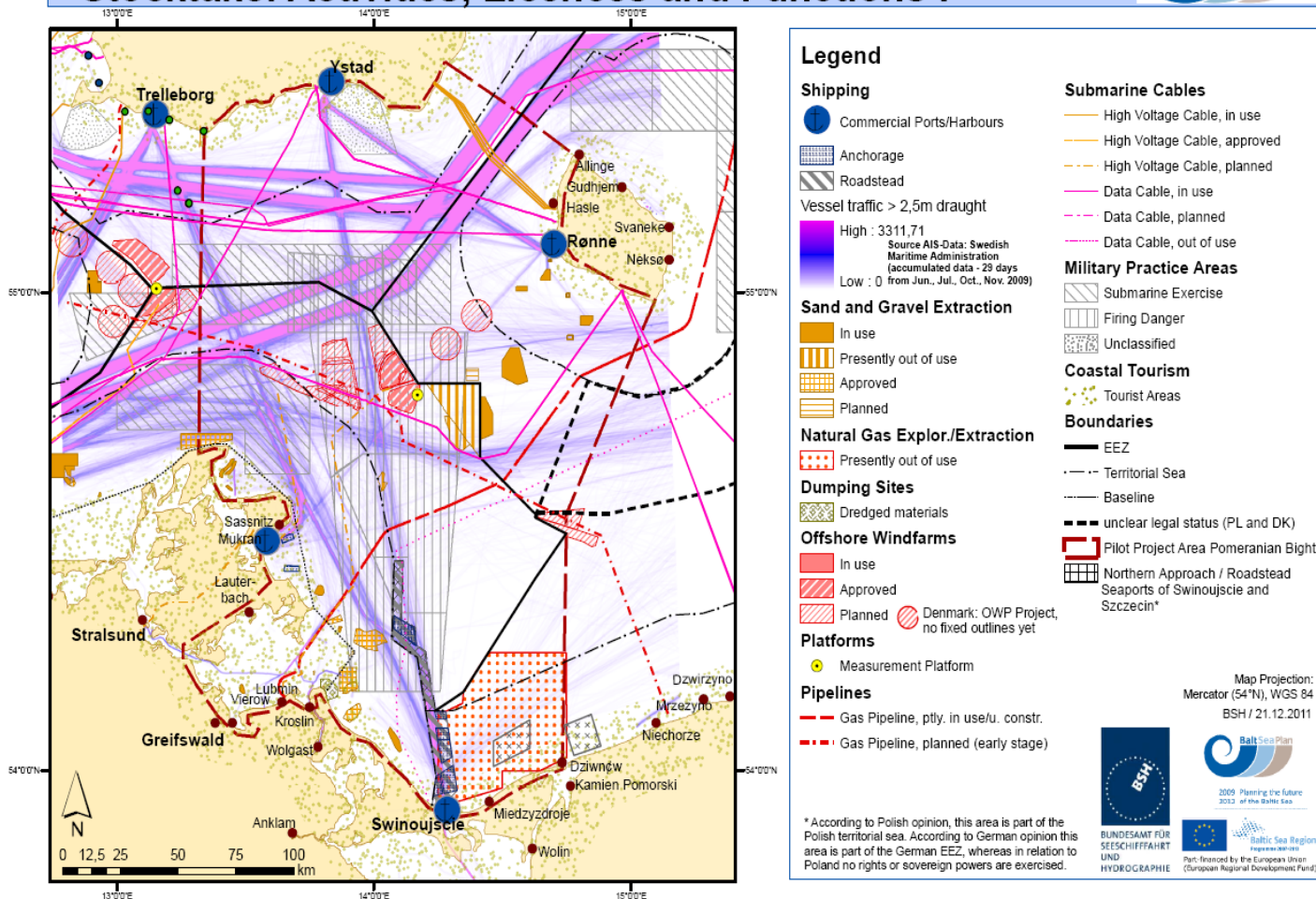
Source: Map prepared by the Federal Maritime and Hydrographic Agency (BMH) Hamburg and Potsdam, Germany.

Pilot Project "MSP Pomeranian Bight / Arkona Basin" - MSP Regulations Germany / IMO Regulations -



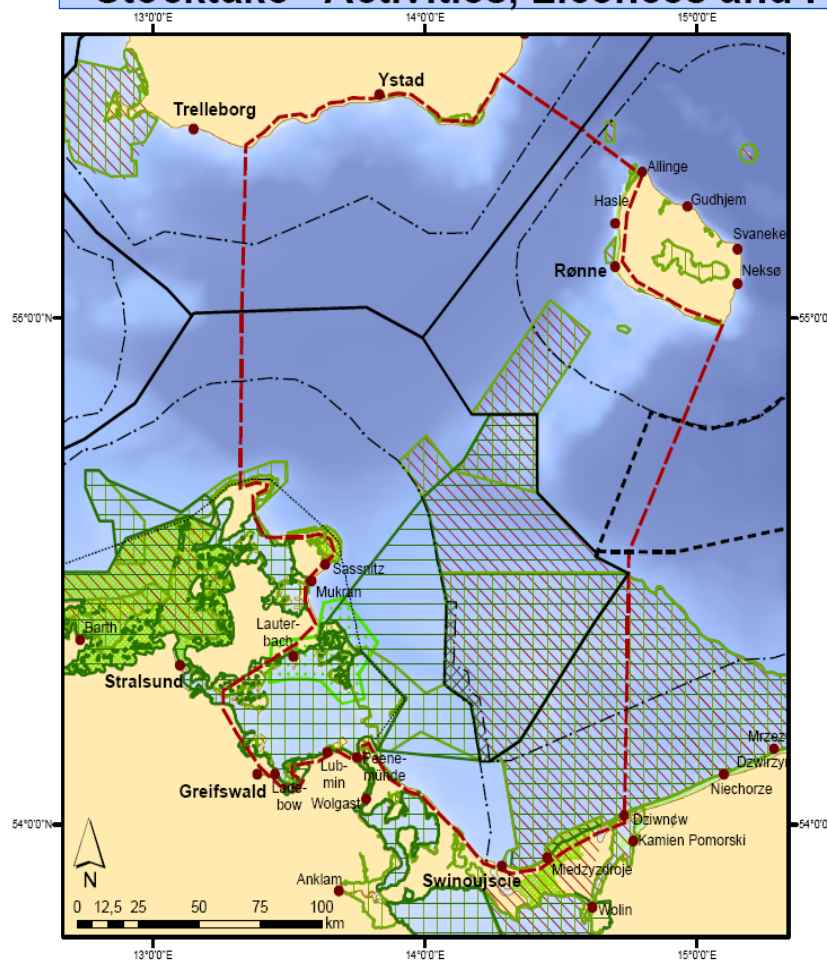
MSP - Pilot Projects

Pilot Project Area - MSP Pomeranian Bight / Arkona Basin - Stocktake: Activities, Licences and Functions I -








MSP - Pilot Projects

Pilot Project Area - MSP Pomeranian Bight / Arkona Basin - Stocktake - Activities, Licences and Functions II -

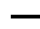
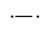






Legend

ConservationAreas

-  NATURA2000, SAC (DK: SCI)
-  NATURA2000, SPA
-  Baltic Sea Protected Areas BSPA
-  NationalPark
-  UNESCO Biosphere Reserve

Boundaries

-  EEZ
-  Territorial Sea
-  Baseline
-  unclear legal status (PL and DK)
-  Pilot Project Area Pomeranian Bight
-  Northern Approach / Roadstead Seaports of Swinoujscie and Szczecin*

Map Projection:
Mercator (54°N), WGS 84

BSH / 05.01.2012

* According to Polish opinion, this area is part of the Polish territorial sea. According to German opinion this area is part of the German EEZ, whereas in relation to Poland no rights or sovereign powers are exercised.

Planning Principles

Objectives and Guidelines of an Overall Concept for the Pilot Project Area

- working towards sustainability with regard to the ecosystem, to economic and to social aspects
- minimisation of conflicts between human uses as well as between human uses and marine environment
- Ensuring good status of marine ecosystems
- application of different planning approaches with regard to different planning issues:
 - positive planning approach - which areas are suitable for a certain activity / for achieving a certain goal based on defined parameters ?
 - negative planning approach - which areas should be excluded from a certain activity based on defined parameters ?
 - Use of MARXAN application to determine suitable areas , e.g. for offshore wind energy, for fishery / non-fishery areas

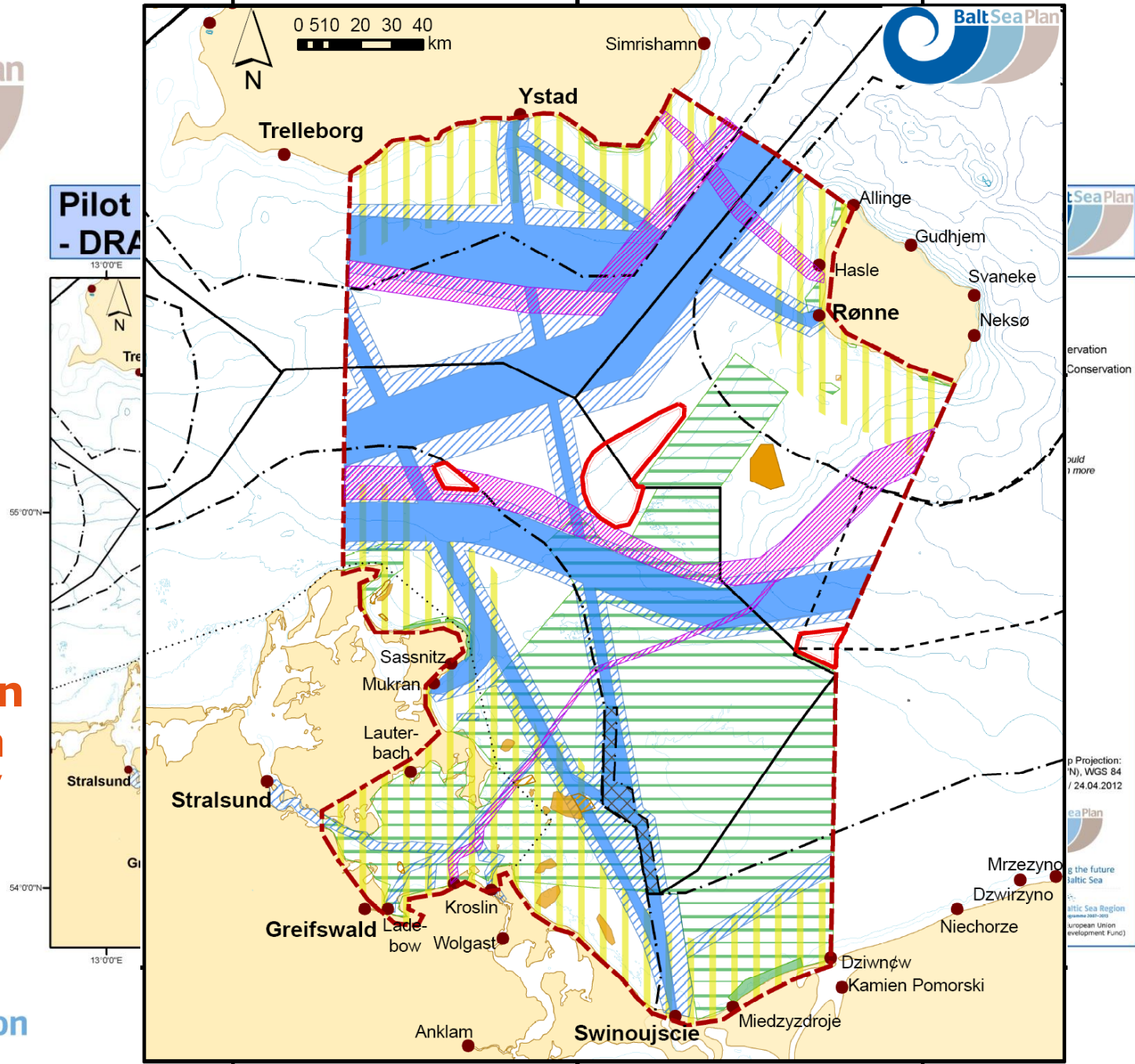
Planning Principles

Aims and Key Objectives

- Safe shipping
- Find suitable areas for wind energy
- Ensure favourable conditions for tourism
- Protection of valuable nature conservation sites (e.g. coherent network...)
- Secure sustainable fisheries
- Promote cooperation of authorities and exchange of knowledge

Pilot Projects - Draft MSPs

Draft MSP for the Pomeranian Bight/ Arkona Basin Project Area (SE/DK/PL/DE)



Achievements

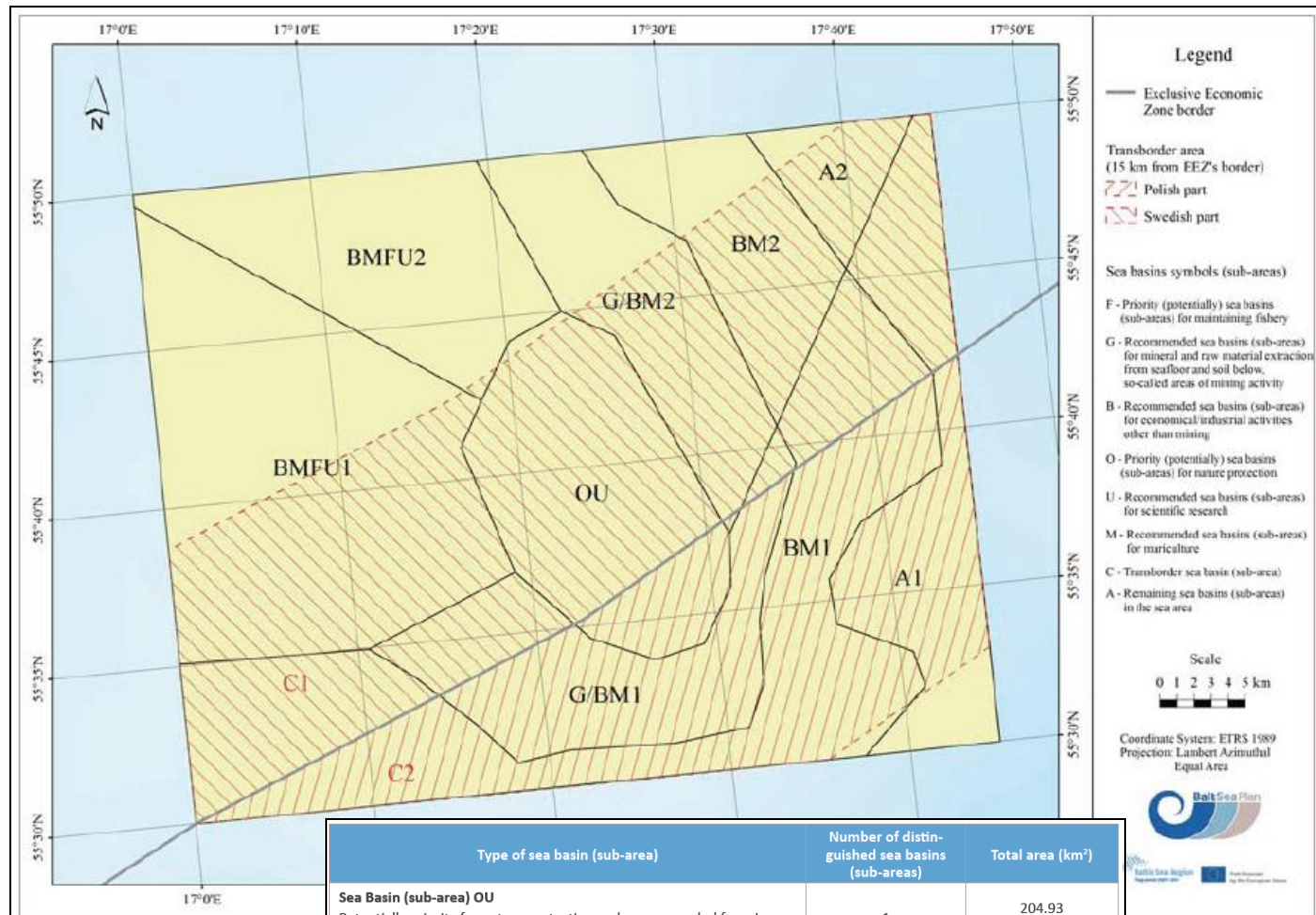
- Developing common understanding of the aims and conditions of transboundary MSP and coordination (outside official procedures!)
- Specifying the principles, methods, problems and issues relating to the elaboration of plan (incl. details and scale)
- Identifying current and potential conflicts of interests
- Specifying the issues which require transboundary cooperation
- Developing methods of stakeholder participation
- Specifying necessary data incl. gathering and exchange
- And of course: drafting a transboundary spatial plan

Challenges/ Conclusions/ Recommendations

- Don't underestimate the time and work (timeframe needed), cultural differences, language problems and resources (e.g. stakeholder meetings)
- Common spatial language necessary (incl. agreed objectives)
- Unbalanced partnership (different competences)
- Lack of maritime planning procedures and precedents
- Diversity of stakeholder knowledge; lack of some data
- cross-border issues need to be tackled together and a common data solution needed
- Transnational processes need more time, more meetings necessary

Pilot Projects - Draft MSPs

Draft MSP for the Middle Bank Project Area (SE / PL)



Type of sea basin (sub-area)	Number of distinguished sea basins (sub-areas)	Total area (km ²)
Sea Basin (sub-area) OU Potentially priority for nature protection and recommended for scientific research	1	204.93
Sea Basin (sub-area) BMFU Recommended for economical/industrial activities other than mining, recommended for mariculture, potentially priority for maintenance of fishery, recommended for scientific research	2	553.40
Sea Basin (sub-area) BM Recommended for economical/industrial activities other than mining, recommended for mariculture	2	473.57
Sea Basin (sub-area) G/BM Recommended for mineral and raw material mining, so-called area of mining activity or for economical/industrial activities other than mining (power production/mariculture)	2	308.87
Sea Basin (sub-area) C Transborder area	2	
Sea Basin (sub-area) A Other areas	2	209.81



Visit us on our website: www.baltseaplan.eu !

BaltSeaPlan FINDINGS to be published in autumn 2012

BaltSeaPlan EVENT in Brussels planned for end 2012