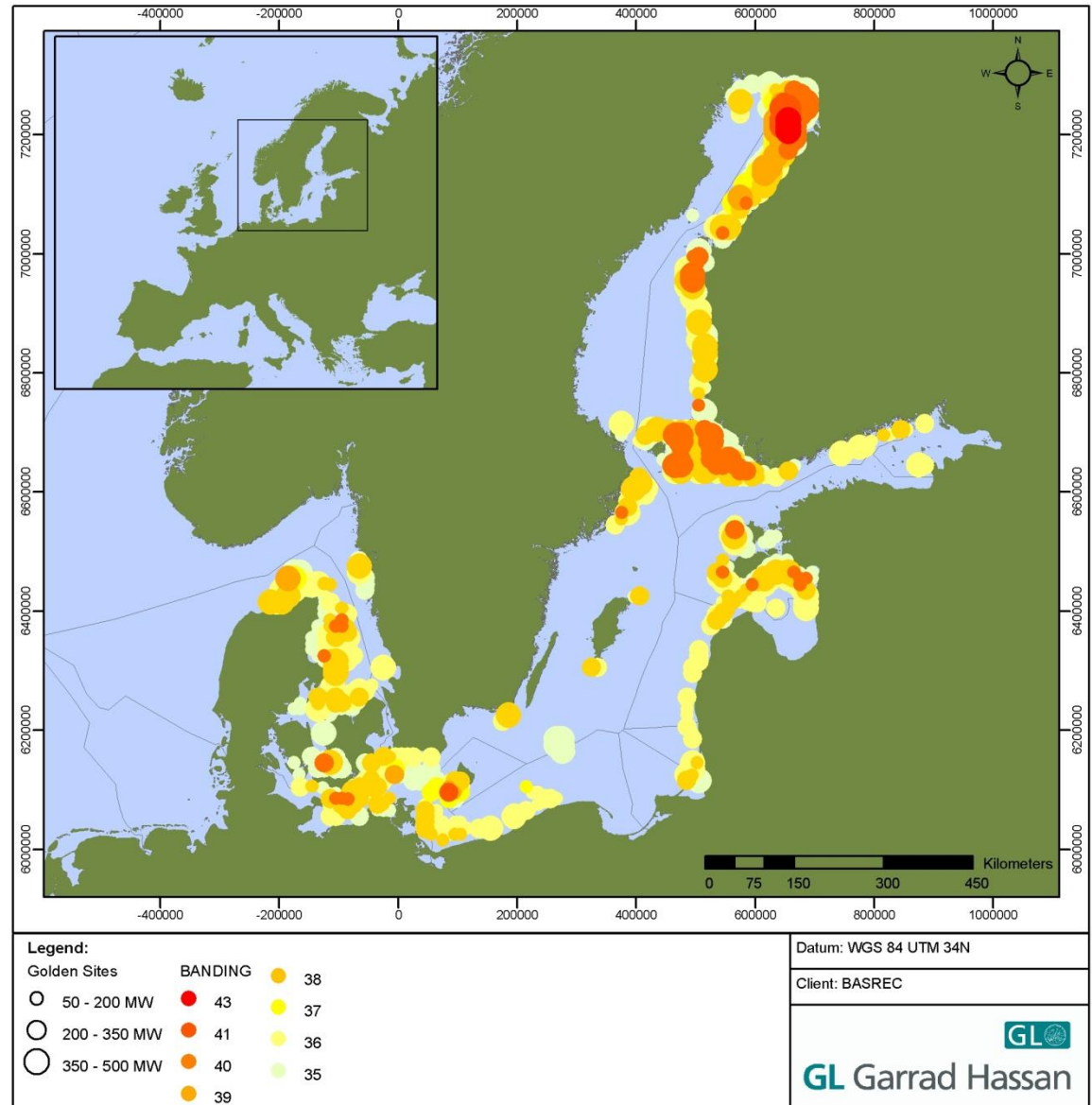


Panel discussion: Stakeholder Perspectives on MSP

**Tuuliki Kasonen, General Manager
Estonian Wind Power Association**
tuuliki@tuuleenergia.ee

17.06.2014

Golden sites in the Baltic Sea by BASREC study made in 2013



In cooperation with



Energeetika



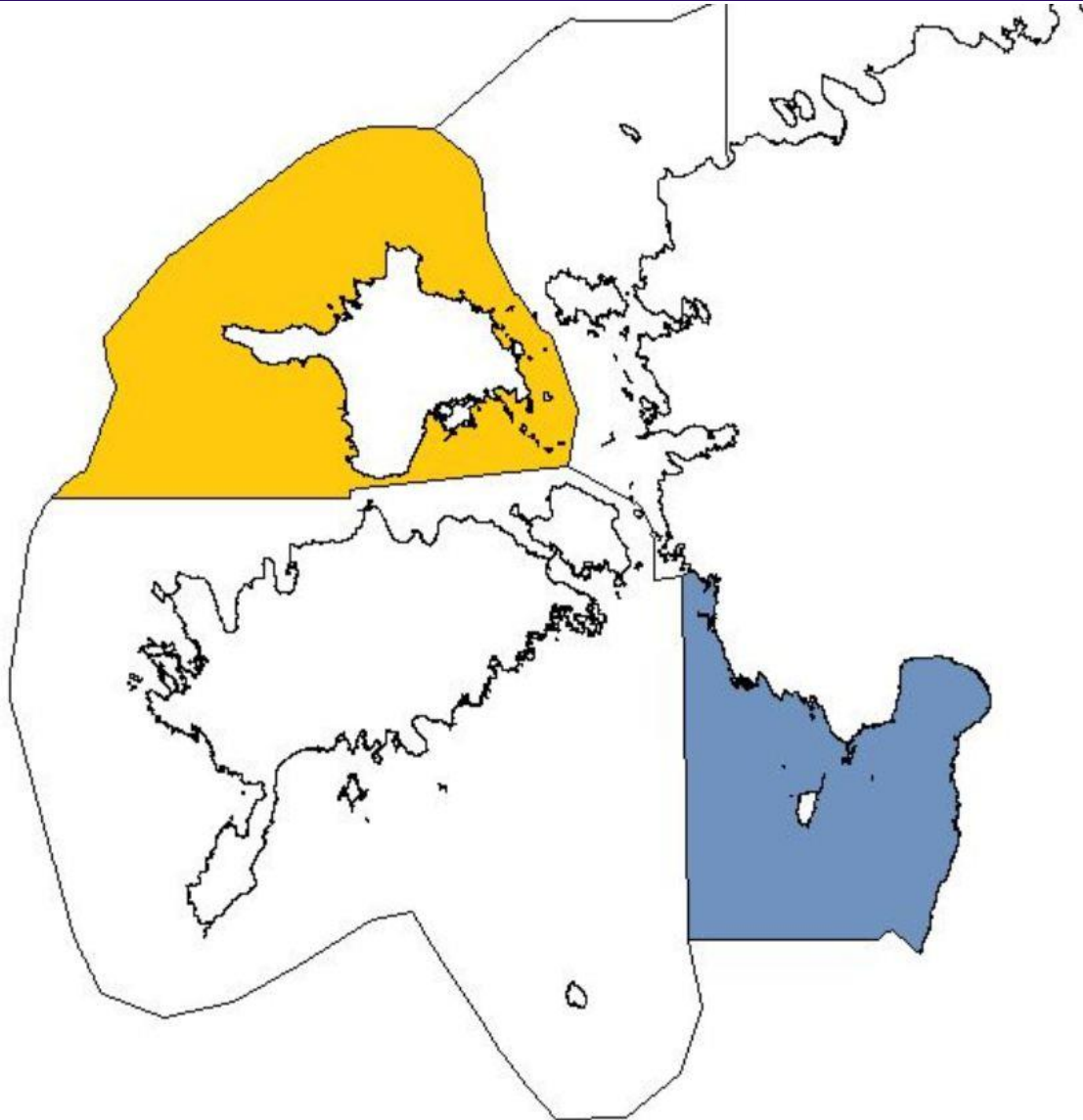
New National Spatial Plan

[Estonia 2030+](#)

Violet areas dedicated for wind energy

Two pilot Maritime Spatial Planning projects launched in the end of 2012

4



Pärnu maakonnaga piirneva mereala maakonnaplaneering. Teine eskiislahendus



Välised seadmevõrgud - mereala ühis- ja koostööalade struktuuri koodid



Eesti seadmevõrgud ja võrgud võrgustikuga seotud alad (aast 2036+)



Pärnumaa ja Läänemere

N	Näide	Seadme tüüp	Seadme kirjeldus
1	1	1	1
2	2	2	2
3	3	3	3
4	4	4	4
5	5	5	5
6	6	6	6
7	7	7	7
8	8	8	8
9	9	9	9
10	10	10	10
11	11	11	11
12	12	12	12
13	13	13	13
14	14	14	14
15	15	15	15
16	16	16	16
17	17	17	17
18	18	18	18
19	19	19	19
20	20	20	20
21	21	21	21
22	22	22	22
23	23	23	23
24	24	24	24
25	25	25	25
26	26	26	26
27	27	27	27
28	28	28	28
29	29	29	29
30	30	30	30
31	31	31	31
32	32	32	32
33	33	33	33
34	34	34	34
35	35	35	35
36	36	36	36
37	37	37	37
38	38	38	38
39	39	39	39
40	40	40	40
41	41	41	41
42	42	42	42
43	43	43	43
44	44	44	44
45	45	45	45
46	46	46	46
47	47	47	47
48	48	48	48
49	49	49	49
50	50	50	50

Düna mereala ja mereala seadmed

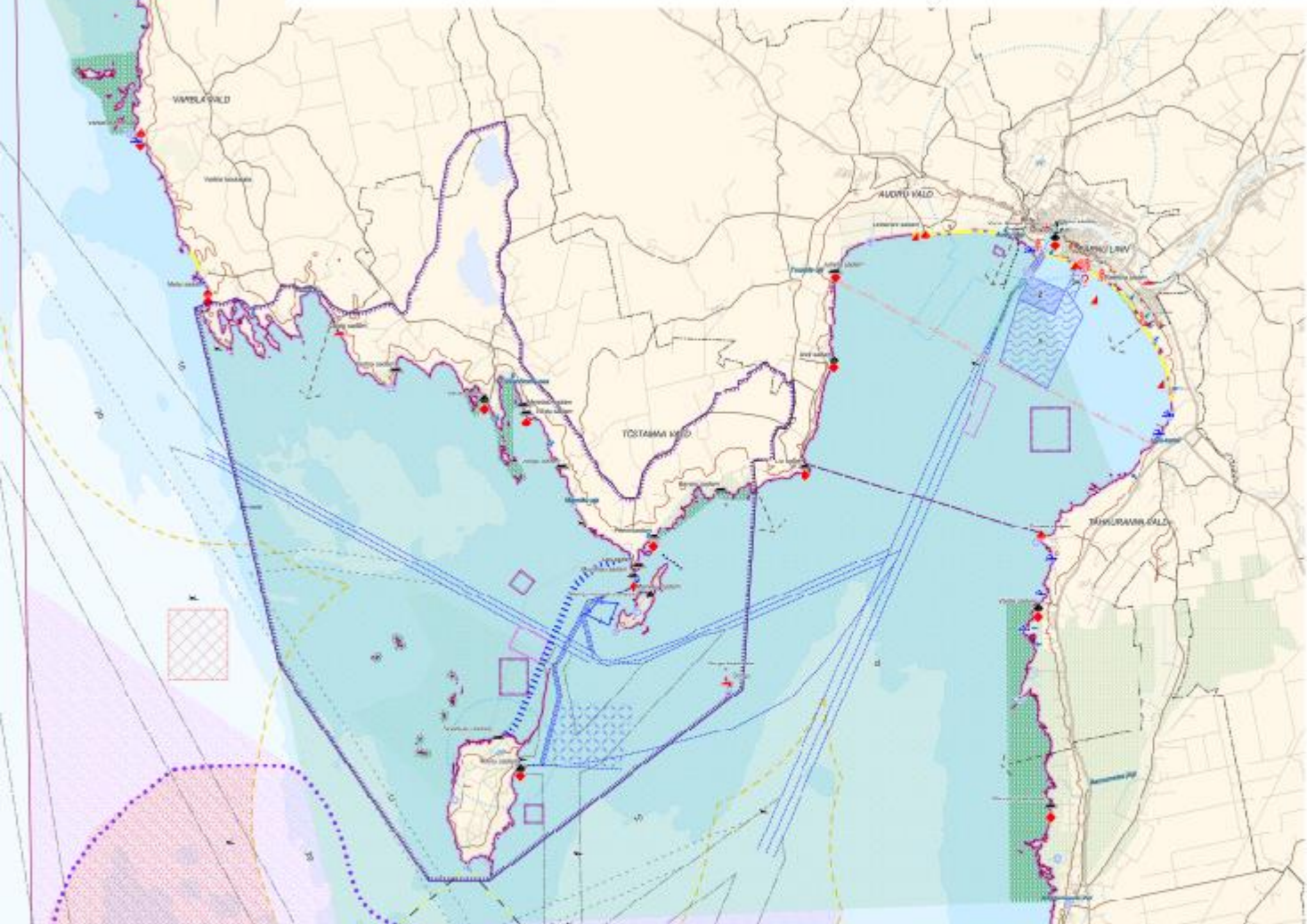
PLANEERITAV MEREKÄSUTUS

(sellekohalised/suhtunud funktsioonid, vabad funktsioonid)
 Käsiplaani mõttekohad ja funktsioonid, mis on arvatavalt kaitsesüsteemi ja kaitsefunktsiooni osana, mis on seotud kaitsesüsteemi ja kaitsefunktsiooni osana, mis on seotud kaitsesüsteemi ja kaitsefunktsiooni osana.

- Chimander pargipoolne 1** (pikkus 107-110)
- Chimander pargipoolne 2** (pikkus 107-110)
- Kaardimäe rüü pargipoolne ja 3*** (pikkus 110-115)
- Kaardimäe rüü pargipoolne 4*** (pikkus 110-115)
- Chimander pargipoolne 5** (pikkus 110-115)
- Chimander pargipoolne 6** (pikkus 110-115)
- Chimander pargipoolne 7** (pikkus 110-115)
- Chimander pargipoolne 8** (pikkus 110-115)
- Chimander pargipoolne 9** (pikkus 110-115)
- Chimander pargipoolne 10** (pikkus 110-115)
- Chimander pargipoolne 11** (pikkus 110-115)
- Chimander pargipoolne 12** (pikkus 110-115)
- Chimander pargipoolne 13** (pikkus 110-115)
- Chimander pargipoolne 14** (pikkus 110-115)
- Chimander pargipoolne 15** (pikkus 110-115)
- Chimander pargipoolne 16** (pikkus 110-115)
- Chimander pargipoolne 17** (pikkus 110-115)
- Chimander pargipoolne 18** (pikkus 110-115)
- Chimander pargipoolne 19** (pikkus 110-115)
- Chimander pargipoolne 20** (pikkus 110-115)
- Chimander pargipoolne 21** (pikkus 110-115)
- Chimander pargipoolne 22** (pikkus 110-115)
- Chimander pargipoolne 23** (pikkus 110-115)
- Chimander pargipoolne 24** (pikkus 110-115)
- Chimander pargipoolne 25** (pikkus 110-115)
- Chimander pargipoolne 26** (pikkus 110-115)
- Chimander pargipoolne 27** (pikkus 110-115)
- Chimander pargipoolne 28** (pikkus 110-115)
- Chimander pargipoolne 29** (pikkus 110-115)
- Chimander pargipoolne 30** (pikkus 110-115)
- Chimander pargipoolne 31** (pikkus 110-115)
- Chimander pargipoolne 32** (pikkus 110-115)
- Chimander pargipoolne 33** (pikkus 110-115)
- Chimander pargipoolne 34** (pikkus 110-115)
- Chimander pargipoolne 35** (pikkus 110-115)
- Chimander pargipoolne 36** (pikkus 110-115)
- Chimander pargipoolne 37** (pikkus 110-115)
- Chimander pargipoolne 38** (pikkus 110-115)
- Chimander pargipoolne 39** (pikkus 110-115)
- Chimander pargipoolne 40** (pikkus 110-115)
- Chimander pargipoolne 41** (pikkus 110-115)
- Chimander pargipoolne 42** (pikkus 110-115)
- Chimander pargipoolne 43** (pikkus 110-115)
- Chimander pargipoolne 44** (pikkus 110-115)
- Chimander pargipoolne 45** (pikkus 110-115)
- Chimander pargipoolne 46** (pikkus 110-115)
- Chimander pargipoolne 47** (pikkus 110-115)
- Chimander pargipoolne 48** (pikkus 110-115)
- Chimander pargipoolne 49** (pikkus 110-115)
- Chimander pargipoolne 50** (pikkus 110-115)

TALUSTAINFO

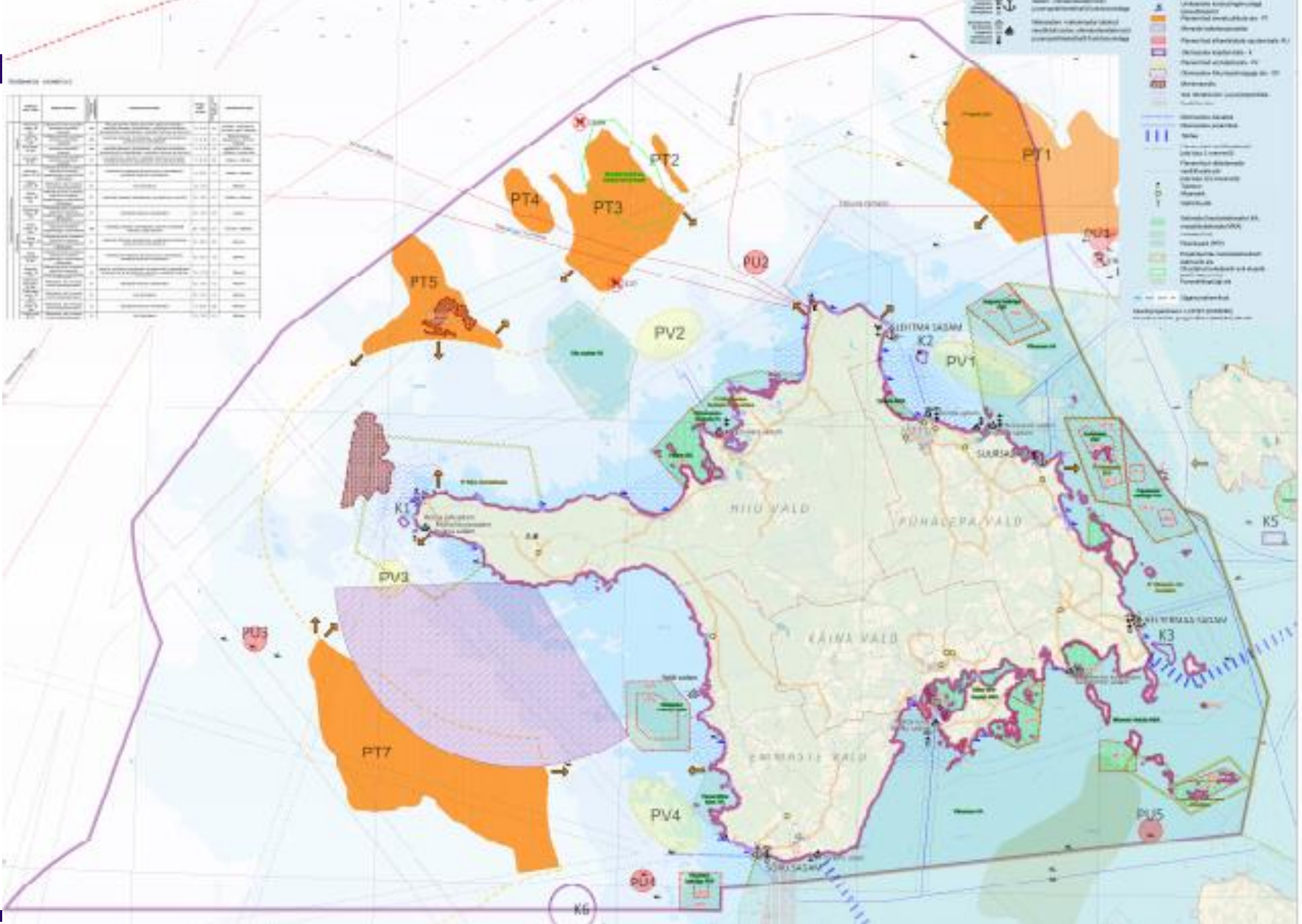
- Planeeritava ala
- Chimanderi ala
- Muudatusala
- Rajatis
- Talustaimed
- Pärnu lahe piir
- Chimanderi ala



Hiiu maakonnaga piirneva mereala maakonnaplaaseering



Alamala	Alamala kirjeldus	Alamala pindala (km ²)	Alamala koordinaadid
PT1
PT2
PT3
PT4
PT5
PT7
PV1
PV2
PV3
PV4
PV5
PU1
PU2
PU3
PU4
PU5
PU6
PU7
PU8
PU9
PU10
PU11
PU12
PU13
PU14
PU15
PU16
PU17
PU18
PU19
PU20
PU21
PU22
PU23
PU24
PU25
PU26
PU27
PU28
PU29
PU30
PU31
PU32
PU33
PU34
PU35
PU36
PU37
PU38
PU39
PU40
PU41
PU42
PU43
PU44
PU45
PU46
PU47
PU48
PU49
PU50
PU51
PU52
PU53
PU54
PU55
PU56
PU57
PU58
PU59
PU60
PU61
PU62
PU63
PU64
PU65
PU66
PU67
PU68
PU69
PU70
PU71
PU72
PU73
PU74
PU75
PU76
PU77
PU78
PU79
PU80
PU81
PU82
PU83
PU84
PU85
PU86
PU87
PU88
PU89
PU90
PU91
PU92
PU93
PU94
PU95
PU96
PU97
PU98
PU99
PU100



- Legend:**
- Alamala:**
 - PT1 - PT7 (Orange)
 - PV1 - PV5 (Purple)
 - PU1 - PU100 (Green)
 - Administrative boundaries:**
 - Hiiu maakond
 - Põhalepa maakond
 - Käina maakond
 - Saaremaa maakond
 - Other symbols:**
 - Water bodies
 - Islands
 - Coastal protection zones
 - Maritime zones
 - Navigation channels
 - Ports
 - Maritime infrastructure
 - Maritime safety zones
 - Maritime parks
 - Maritime reserves
 - Maritime protected areas
 - Maritime protected areas of II order
 - Maritime protected areas of III order
 - Maritime protected areas of IV order
 - Maritime protected areas of V order
 - Maritime protected areas of VI order
 - Maritime protected areas of VII order
 - Maritime protected areas of VIII order
 - Maritime protected areas of IX order
 - Maritime protected areas of X order
 - Maritime protected areas of XI order
 - Maritime protected areas of XII order
 - Maritime protected areas of XIII order
 - Maritime protected areas of XIV order
 - Maritime protected areas of XV order
 - Maritime protected areas of XVI order
 - Maritime protected areas of XVII order
 - Maritime protected areas of XVIII order
 - Maritime protected areas of XIX order
 - Maritime protected areas of XX order
 - Maritime protected areas of XXI order
 - Maritime protected areas of XXII order
 - Maritime protected areas of XXIII order
 - Maritime protected areas of XXIV order
 - Maritime protected areas of XXV order
 - Maritime protected areas of XXVI order
 - Maritime protected areas of XXVII order
 - Maritime protected areas of XXVIII order
 - Maritime protected areas of XXIX order
 - Maritime protected areas of XXX order
 - Maritime protected areas of XXXI order
 - Maritime protected areas of XXXII order
 - Maritime protected areas of XXXIII order
 - Maritime protected areas of XXXIV order
 - Maritime protected areas of XXXV order
 - Maritime protected areas of XXXVI order
 - Maritime protected areas of XXXVII order
 - Maritime protected areas of XXXVIII order
 - Maritime protected areas of XXXIX order
 - Maritime protected areas of XL order
 - Maritime protected areas of XLI order
 - Maritime protected areas of XLII order
 - Maritime protected areas of XLIII order
 - Maritime protected areas of XLIV order
 - Maritime protected areas of XLV order
 - Maritime protected areas of XLVI order
 - Maritime protected areas of XLVII order
 - Maritime protected areas of XLVIII order
 - Maritime protected areas of XLIX order
 - Maritime protected areas of L order
 - Maritime protected areas of LI order
 - Maritime protected areas of LII order
 - Maritime protected areas of LIII order
 - Maritime protected areas of LIV order
 - Maritime protected areas of LV order
 - Maritime protected areas of LVI order
 - Maritime protected areas of LVII order
 - Maritime protected areas of LVIII order
 - Maritime protected areas of LIX order
 - Maritime protected areas of LX order
 - Maritime protected areas of LXI order
 - Maritime protected areas of LXII order
 - Maritime protected areas of LXIII order
 - Maritime protected areas of LXIV order
 - Maritime protected areas of LXV order
 - Maritime protected areas of LXVI order
 - Maritime protected areas of LXVII order
 - Maritime protected areas of LXVIII order
 - Maritime protected areas of LXIX order
 - Maritime protected areas of LXX order
 - Maritime protected areas of LXXI order
 - Maritime protected areas of LXXII order
 - Maritime protected areas of LXXIII order
 - Maritime protected areas of LXXIV order
 - Maritime protected areas of LXXV order
 - Maritime protected areas of LXXVI order
 - Maritime protected areas of LXXVII order
 - Maritime protected areas of LXXVIII order
 - Maritime protected areas of LXXIX order
 - Maritime protected areas of LXXX order
 - Maritime protected areas of LXXXI order
 - Maritime protected areas of LXXXII order
 - Maritime protected areas of LXXXIII order
 - Maritime protected areas of LXXXIV order
 - Maritime protected areas of LXXXV order
 - Maritime protected areas of LXXXVI order
 - Maritime protected areas of LXXXVII order
 - Maritime protected areas of LXXXVIII order
 - Maritime protected areas of LXXXIX order
 - Maritime protected areas of LXXXX order
 - Maritime protected areas of LXXXXI order
 - Maritime protected areas of LXXXXII order
 - Maritime protected areas of LXXXXIII order
 - Maritime protected areas of LXXXXIV order
 - Maritime protected areas of LXXXXV order
 - Maritime protected areas of LXXXXVI order
 - Maritime protected areas of LXXXXVII order
 - Maritime protected areas of LXXXXVIII order
 - Maritime protected areas of LXXXXIX order
 - Maritime protected areas of LXXXXX order

Pipeline of offshore wind farms in Estonia, approx 1500 MW

7

