

Towards a spatial typology

Results of the ESaTDOR project

Holger Janßen

Leibniz Institute for Baltic Sea Research (IOW)

Framework

- Funded by the **ESPON 2013 Programme** which mission is to:
- **“Support policy development** in relation to the aim of **territorial cohesion** and a **harmonious development** of the **European territory** by (1) providing **comparable information, evidence, analyses and scenarios** on territorial dynamics and (2) revealing territorial capital and potentials for development of regions and larger territories contributing to European competitiveness, territorial cooperation and a sustainable and balanced development”

Aims of the project

Tasks:

- To map activities on/in European Sea
- To propose a spatial statistical system for the sea (“MUTS – Marine Units of Territorial Statistics, 10 x 10 km”)
- Identify governance examples for European Seas

Cross-border governance case studies

	Arctic Ocean	Atlantic Ocean	Mediterranean Sea	North Sea		Baltic Sea	Black Sea
Regional Sea Case Study	Northern Dimension and Arctic Council	Atlantic Arc Commission	Protocol on Integrated Coastal Zone Management in the Mediterranean	The OSPAR Commission	Regional Sea Case Study 1	VASAB (Vision and Strategies for the Baltic Sea Region)	The Black Sea Regional Energy Centre (and Black Sea Synergy)
Sub-Seas Case Study 1	Maritime delimitation treaty between Norway and Denmark	British Irish Council	Adriatic – Ionian Initiative (AII) and Adriatic Sea Partnership (ASP)	The Trilateral Wadden Sea Cooperation	Regional Sea Case Study 2	HELCOM – Helsinki Convention	Black Sea Commission
Sub-Seas Case Study 2	Maritime delimitation treaty between Norway and Russia (Barents Treaty)	Solway Firth Partnership	The MedGovernance Partnership and Project	Flemish-Dutch cooperation on the Scheldt estuary (Westerschelde Estuary)	Regional Sea Case Study 3	MSP Working Group / HELCOM-VASAB	Black Sea Global Ocean Observing System
					Sub-Seas Case Study 1	Pomeranian Bight MSP Initiative (BaltSeaPlan)	

Baltic documents available at
www.io-warnemuende.de/esatdor.html

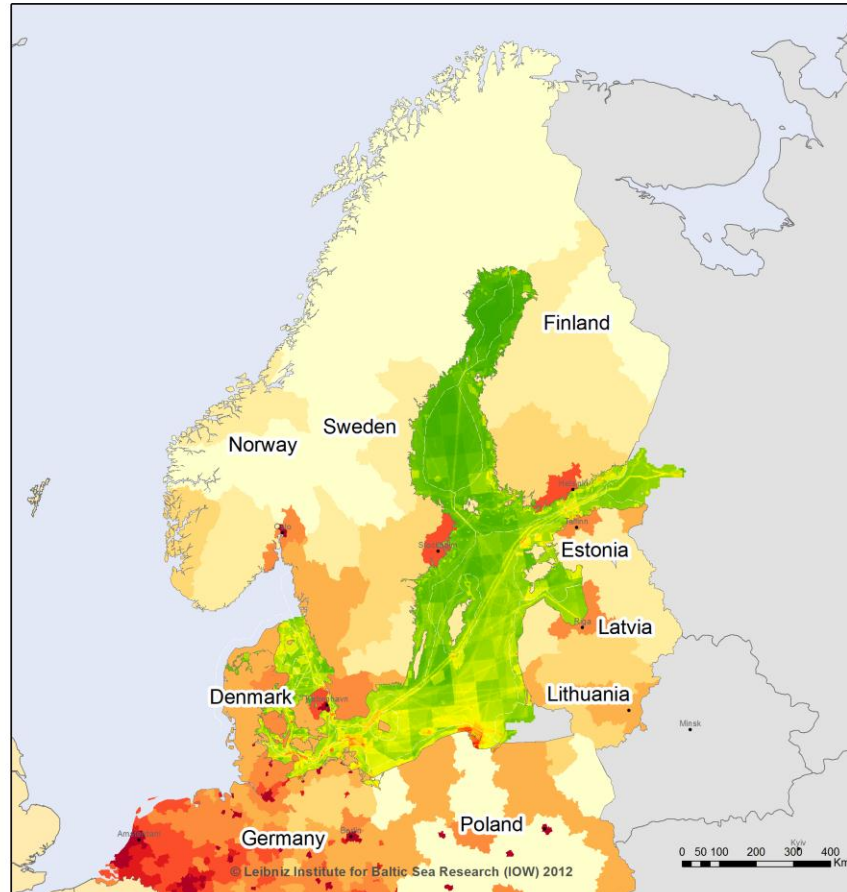
Towards a spatial typology

- Urban/rural, residential/industrial on land
- Different planning **goals and visions** linked to these categories
- **Legal regulations** differ from category to category
- Different **threshold values** (e.g. noise, pollutants, light) for each category

Approach - Theory

	European Core	High Density	Medium Density	Rural	Wildernes
Level of use	high				low
Footprint	high				low
Maritime connections	global				local
Land-sea interactions	high				low
Population density	high				low
Environmental risk	high				low
Environmental conditions	degraded				low degradation
Economic significance	high				low

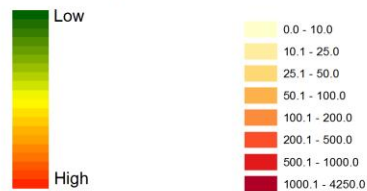
Anthropogenic intensity & population density




 EUROPEAN UNION
 Part-financed by the European Regional Development Fund
 INVESTING IN YOUR FUTURE

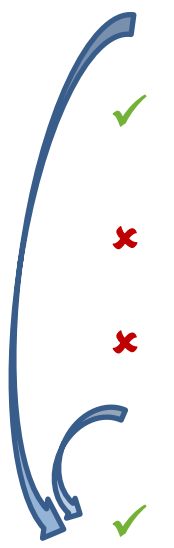
Regional level: NUTS 3
 Source: BSH, Eurostat, European Cluster Observatory, HELCOM, 2011/2012
 © EuroGeographics Association for administrative boundaries

Sea intensity (IMSC + BSII) Population density



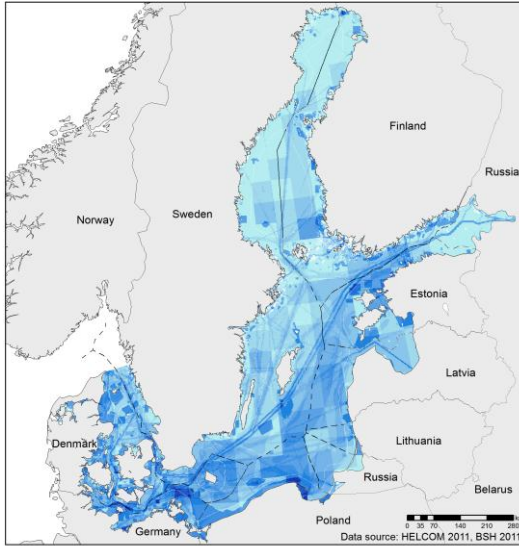
Approach

		European Core	High Density	Medium Density	Rural	Wildernes	
✓	Level of use	high					low
	Footprint	high					low
✓	Maritime connections	global					local
✗	Land-sea interactions	high					low
✗	Population density	high					low
	Environmental risk	high					low
✓	Environmental conditions	degraded					low degradation
✓	Economic significance	high					low



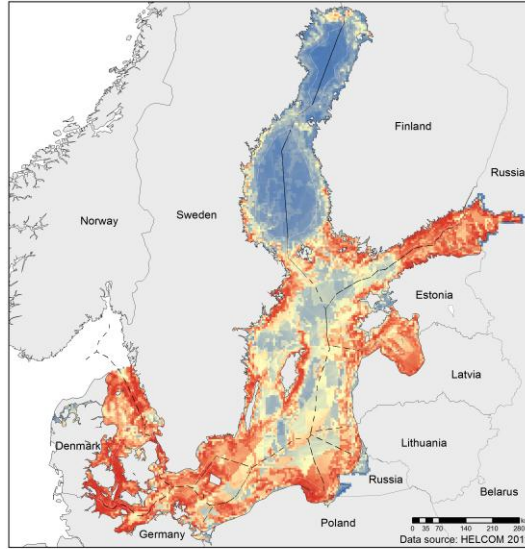
Approach

Intensity of uses



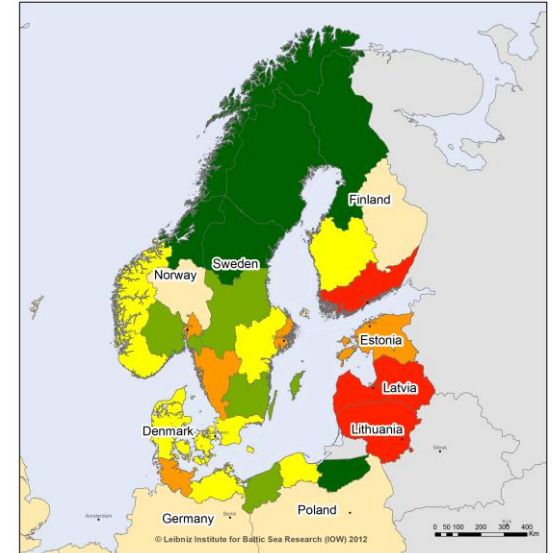
+

HOLAS BSII



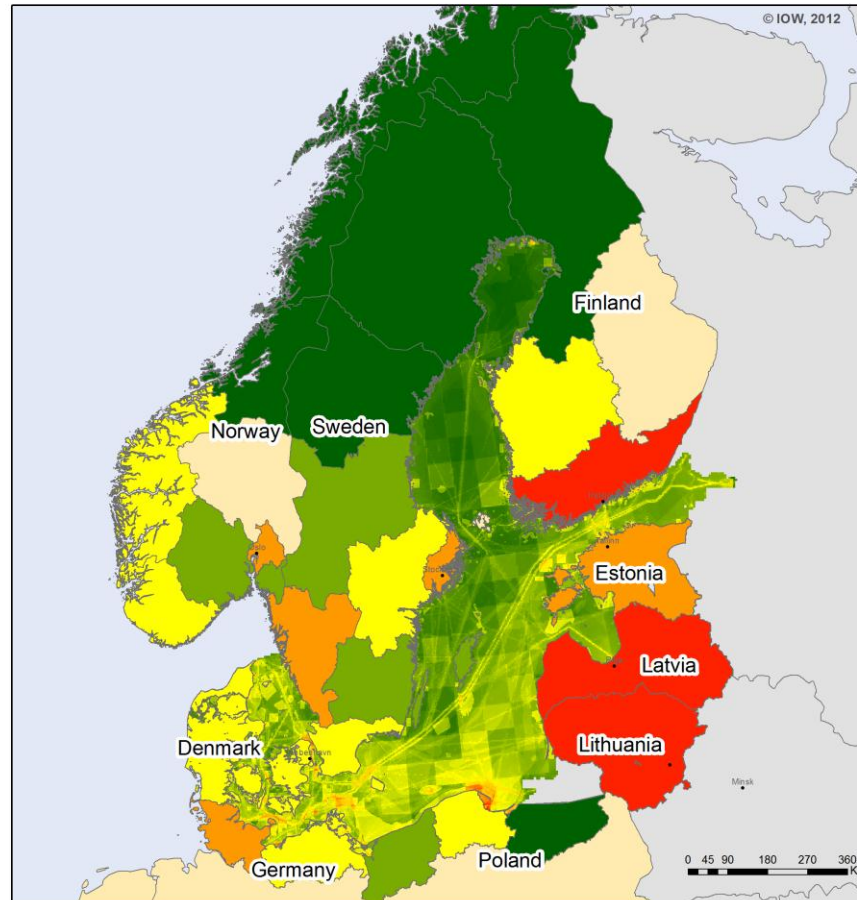
+

Maritime employment



Spatial intensities

Background data for a Baltic typology



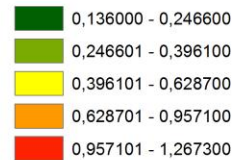
EUROPEAN UNION
Part-financed by the European Regional Development Fund
INVESTING IN YOUR FUTURE

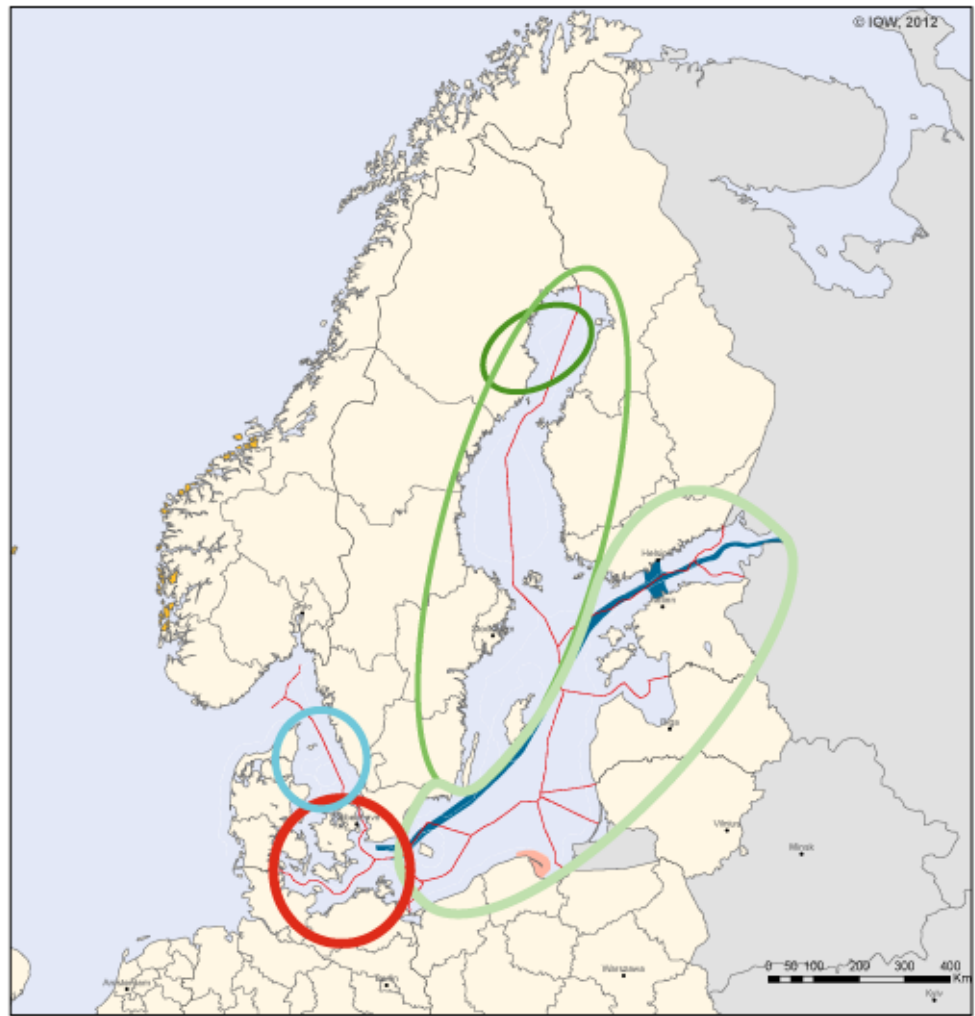
Sea intensity (IMSC + BSII)



Land intensity

(share of maritime employment per NUTS-2 in total employment (BSR level) [%])






EUROPEAN UNION
 Part-financed by the European Regional Development Fund
 INVESTING IN YOUR FUTURE

Regional level: NUTS 2
 Source: BSH, Eurostat, European Cluster Observatory, HELCOM, 2011/2012
 © EuroGeographics Association for administrative boundaries

-  Wilderness
-  Extensive rural
-  Intensive rural
-  Transport corridor
-  Transition
-  Local hub
-  Regional hub

Holger Janßen

Leibniz Institute for Baltic Sea Research (IOW)

holger.janssen@io-warnemuende.de

Phone: +49 381 5197 469

Fax: +49 381 5197 211

**ESP  N-SEAS
(ESaTDOR)**

