



Landkreis Cuxhaven

Interreg Baltic Sea Region

MAMBA project partner County of Cuxhaven, Germany

**Gabi Kasten, Landkreis Cuxhaven
(County of Cuxhaven)**

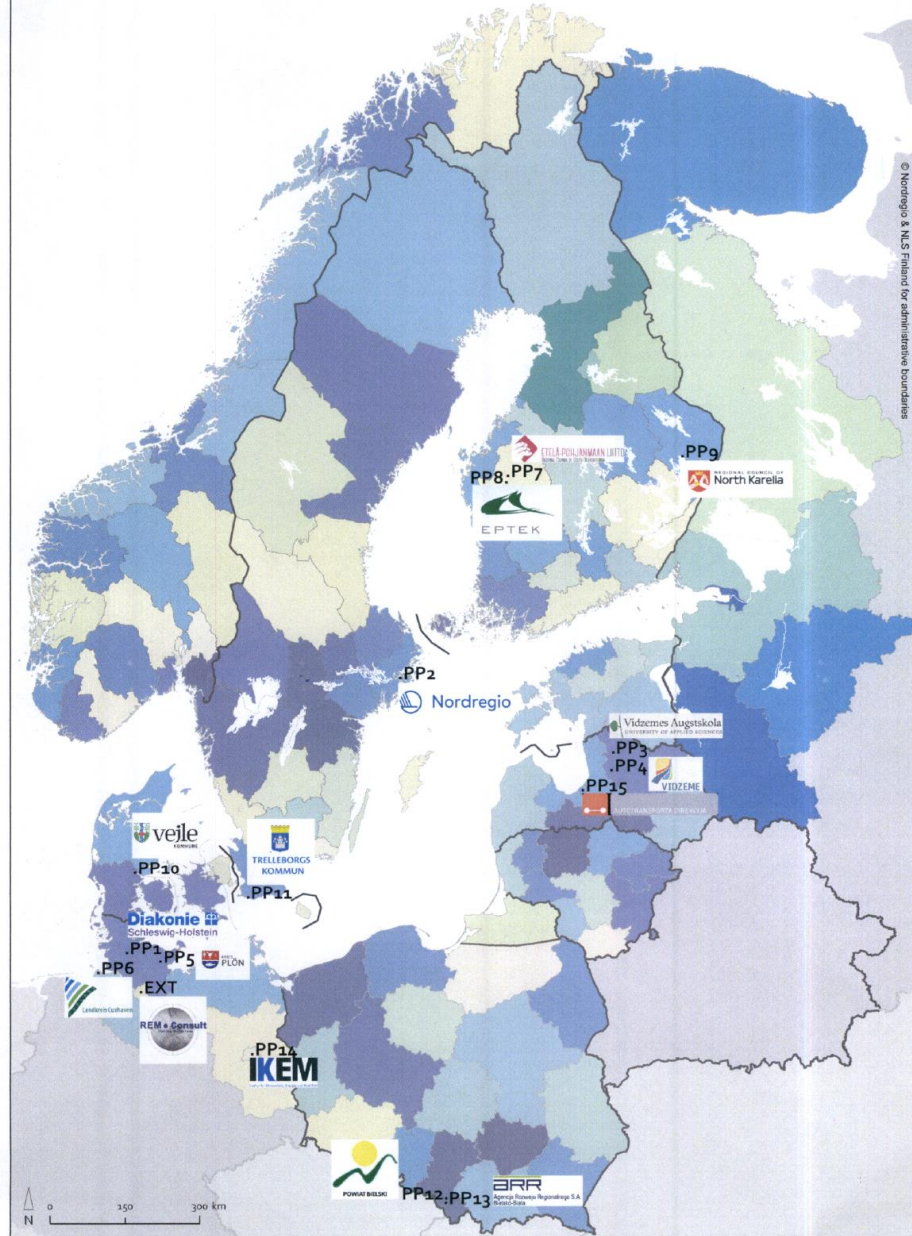
22.01.2019

MAMBA

**Maximised Mobility and Accessibility of
Services in Regions affected by
Demographic Change**

MAMBA

- **15 partners from 6 countries**
- **look for ways,
to improve mobility
and guarantee the social participation
of people in sparsely populated areas so too**



MAMBA

- **Germany**
County of Cuxhaven, County of Plön, Diaconie of Schleswig Holstein, –
Lead Partner, Institute for Climate Protection, Energy and Mobility
- **Denmark**
Velje Municipality
- **Sweden**
Norderegio, Municipality of Trelleborg

MAMBA

project partners

- **Finland**

Regional Council of South Ostrobothnia, South Ostrobothnia Health Technology Development Centre, Regional Council of North Karelia

- **Latvia**

Vidzeme Planning Region, Vidzeme University of Applied Sciences, Road Transport Administration

- **Poland**

Bielsko District, Bielsko-Biala Regional Development Agency

MAMBA

- **project volume 3.539.884,65 €**
- **volume County of Cuxhaven 195.001 €**
- **scientific project with pilots**
- **main objective: mobility centers, MC**
- **pilot for example:
village car – pilot County of Cuxhaven**

MAMBA

main website

www.mambaproject.eu

County of Cuxhaven

www.landkreis-cuxhaven.de/mamba

MAMBA – example of a pilot

- **multifunctional e-mobility offer in Geestland city**
- **commitment as**
 - **carsharing-vehicle**
 - **with honorary driving service**
 - **pool vehicle for various services**
 - **pool vehicle for companies**



MAMBA – MC

examples of actions

- **introduction of a single telephone number**
- **put together the order of traffic on demand and the Cuxland-Infoline
(it's a telephone information for mobility)**
- **implementation of additional tasks in the MC**

MAMBA - MC

Montag, 19.11.18

Hamburg Hbf
Steinau(Niederelbe)
Altbachenbruch 7



08:06
10:05

2:09

1

RE5
AST
1335

AST 1335: Anruf-Sammel-Taxi: verkehrt nur bei Anmeldung bis 60 Minuten vor Abfahrt unter Tel. 01801 221100 (3,9 Ct/min aus dem deutschen Festnetz, max. 42 Ct/min mobil)

Bereich	Telefonnummer
Samtgemeinde Börde Lamstedt	01801 / 992299
Samtgemeinde Hemmoor	01801 / 884400
Samtgemeinde Land Hadeln, (ehem. SG Am Dobrock -Bereich Cadenberge, Wingst)	01801 / 557755
Samtgemeinde Land Hadeln (Bereich Otterndorf, Ihlienworth)	01801 / 221100
Gemeinde Beverstedt Gemeinde Hagen i. Br. Gemeinde Loxstedt Gemeinde Schiffdorf	0471 / 3003777
Gemeinde Wurster Nordseeküste Stadt Geestland Stadt Cuxhaven	01801 / 227722





Landkreis Cuxhaven

Many Thanks!

Gabi Kasten

Landkreis Cuxhaven/County of Cuxhaven

Fachgebiet ÖPNV/Area of Expertise ÖPNV

Amt Bauaufsicht und Regionalplanung/

Office Building Superversion and regional planning

27470 Cuxhaven

Tel.: 04721/66 2443

Fax: 04721/66 270042

g.kasten@landkreis-cuxhaven.de

22.01.2019