

## PROJECT PARTNERSHIP

### Lead Partner:



### Project Partners:



Swedish Agency  
of Marine and  
Water Management



### Associated Partners:

-  Finnish Heritage Agency, the Baltic Region Heritage Committee
-  Ministry of Economics of the Republic of Latvia
-  Danish Maritime Authority
-  Ministry of Justice, European Affairs, Consumer Protection and Equality  
Horizontal Action Spatial Planning (HELCOM-VASAB MSP WG)
-  Maritime Office Gdynia
-  Estonian Ministry of Finance
-  Ministry of Maritime Economy and Inland Navigation
-  Ministry of Energy, Infrastructure and Digitalization Mecklenburg-Vorpommern
-  Leontief Centre
-  University of Tartu
-  Federal Public Service of Health, Food Chain Safety and Environment
-  Finnish Ministry of the Environment
-  Federal Maritime and Hydrographic Agency
-  The Ministry of Environment of the Republic of Lithuania



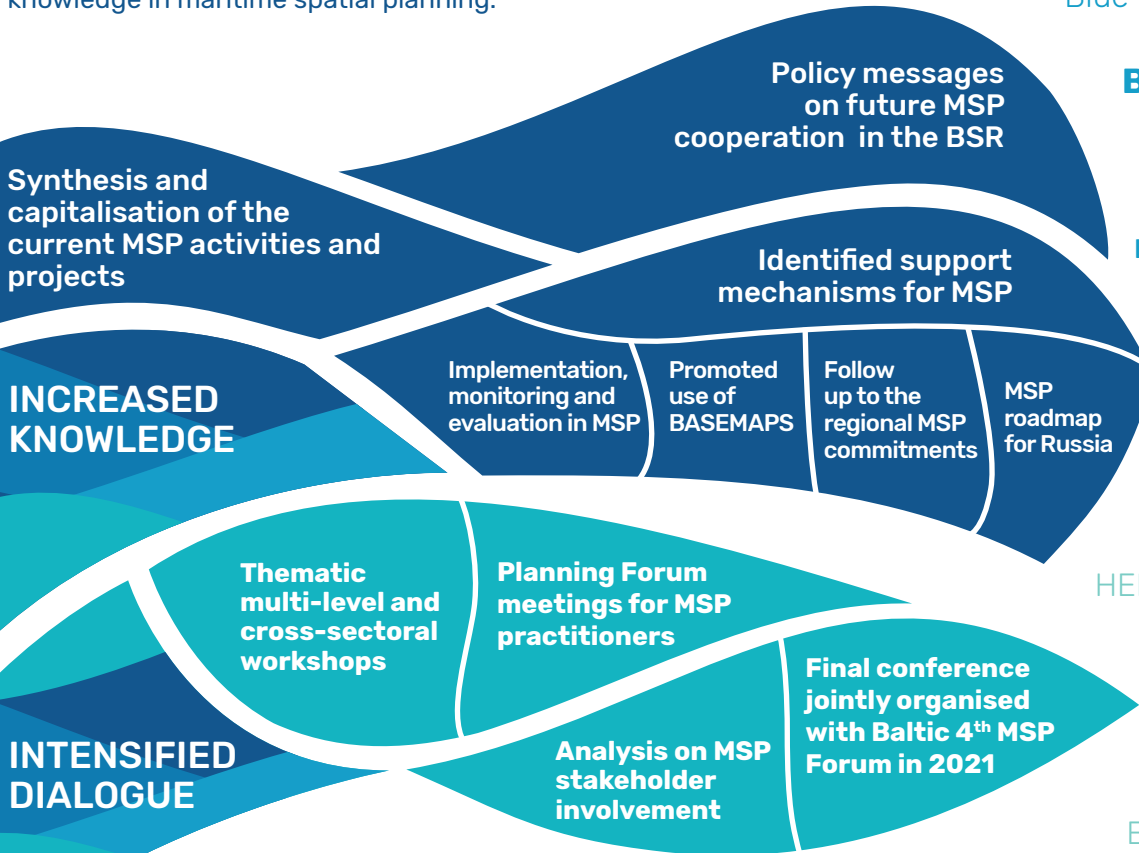
## CAPACITY4MSP

Strengthening the capacity of  
MSP stakeholders and decision makers

## GENERAL INFORMATION

**Capacity4MSP** aims to strengthen the capacity of maritime spatial planning (MSP) stakeholders, policy- and decision-makers in the Baltic Sea Region through intensified dialogue activities and amplifying the gained knowledge in maritime spatial planning.

CAPACITY4MSP IS BUILT ON PROJECTS, NATIONAL MSP PROCESSES AND OTHER ACTIVITIES:



### Baltic Lines

BALTIC RIM

### BALTIC INTEGRID

Baltic Blue Growth

Blue Platform Project

### LAND-SEA-ACT

### BALTIC SCOPE

Pan Baltic Scope

### MUSES

BONUS BASMATI

**BONUS BaltSpace**

REGIONAL

BALTIC MSP

ROADMAP

**EUSSBR**

Action Plan

**VASAB**

Long-Term

Perspective

HELCOM Baltic Sea

Action Plan

**BSR MSP**

Data Expert

Sub-group

National/regional

MSP processes

EU MSP Platform

**LEAD PARTNER:**

VASAB Secretariat  
Alberta street 10,  
Riga, LV-1010, Latvia  
+371 67350630

**PROJECT DURATION:**

1 August 2019 –  
30 September 2021

**FIND OUT MORE:**

[www.capacity4msp.eu](http://www.capacity4msp.eu)  
[info@vasab.org](mailto:info@vasab.org)  
#Capacity4MSP

