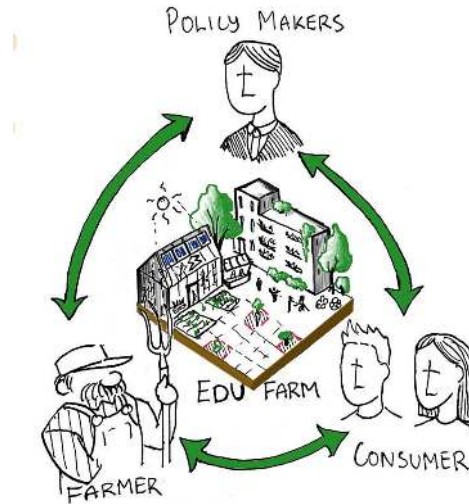


# Future Food System of BSR



# the Baltic Beans



**Erik Rydiander**  
Landscape architect, SLU  
Sweden



**Gabrielė Jerošinė**  
Architecture in Extreme  
Environments, KADK  
Denmark



**Angad Veer**  
Veterinary Surgeon, UTP  
Poland

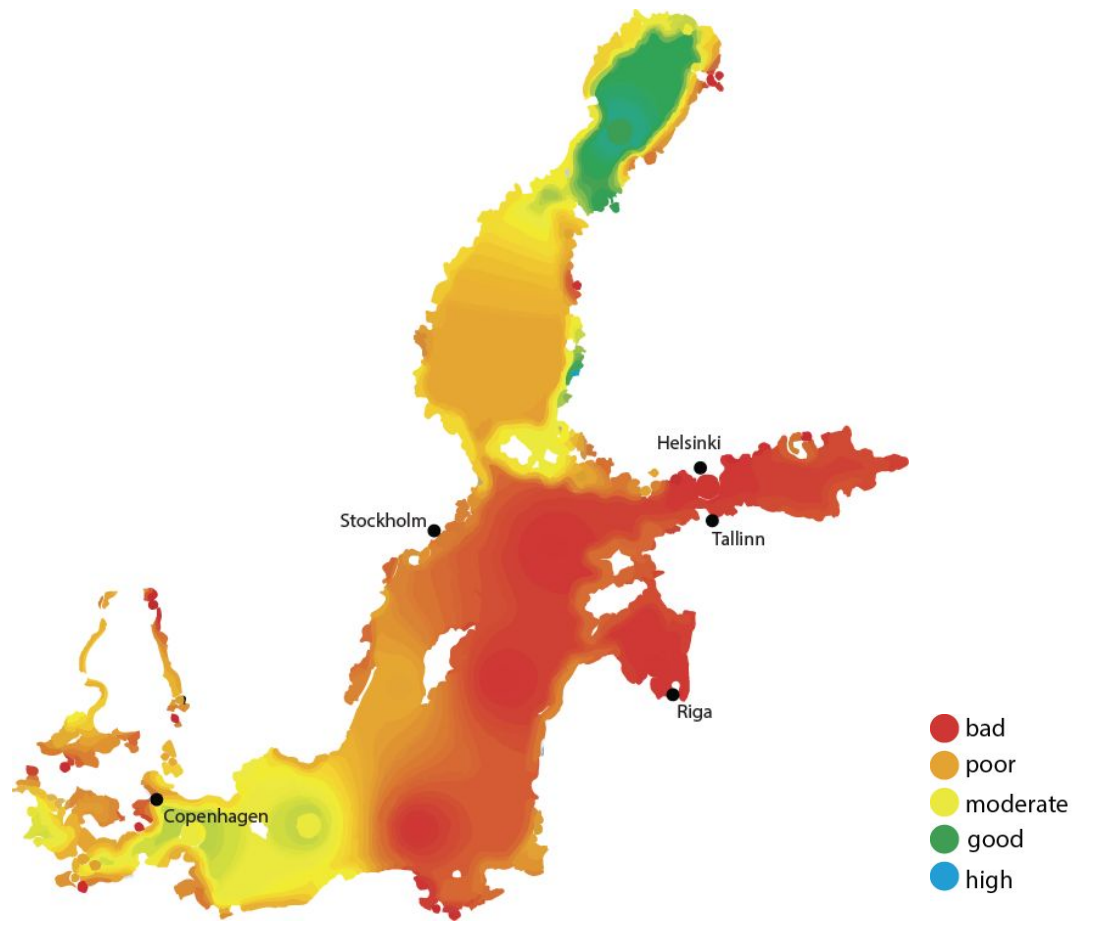


**Aliaksandra Rameika**  
Architect, BNTU  
Belarus



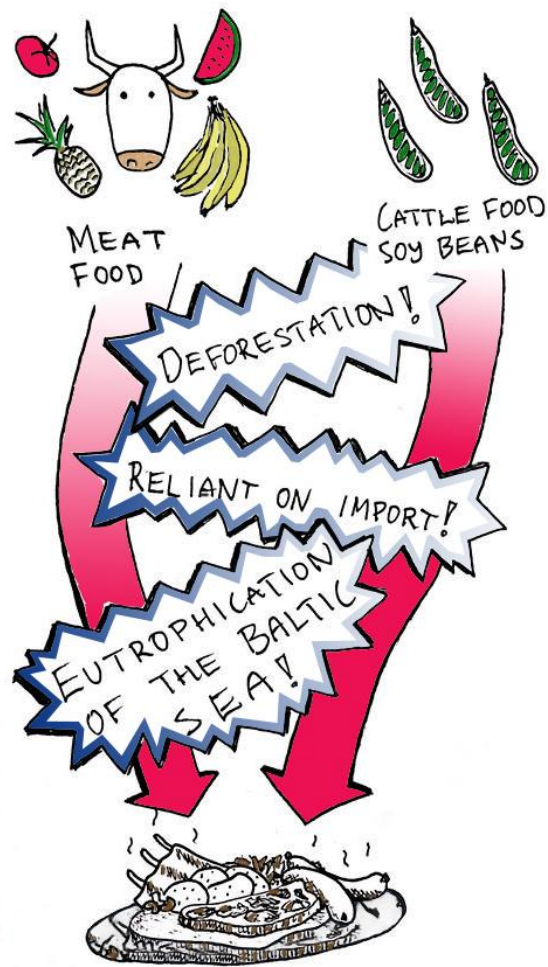
**Daša Švaikovskaja**  
Biomedicine, Nutrition, KI  
Estonia

# The Challenge



**EUTROPHICATION: heat-integrated classification** HELCOM data

# The Challenge



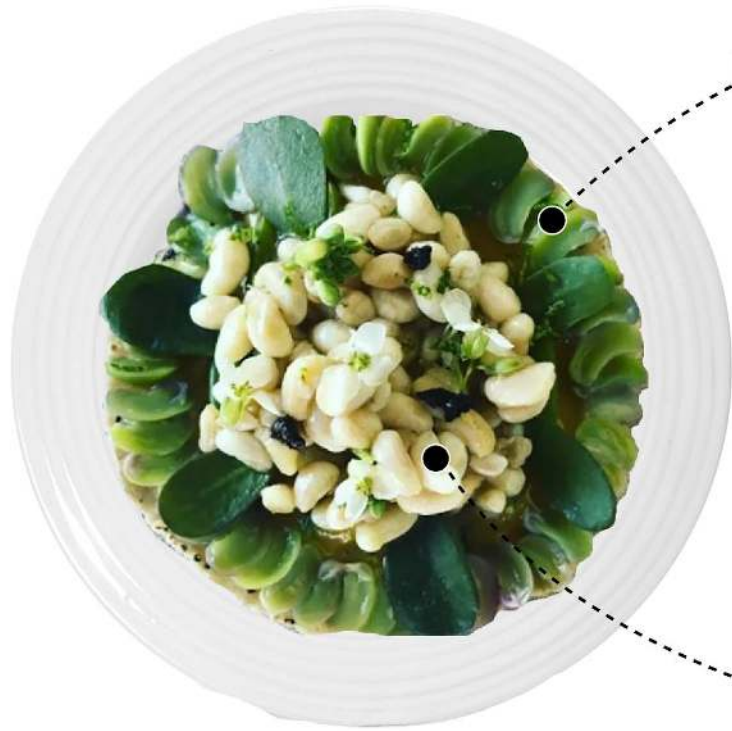
Global

EU

Baltic

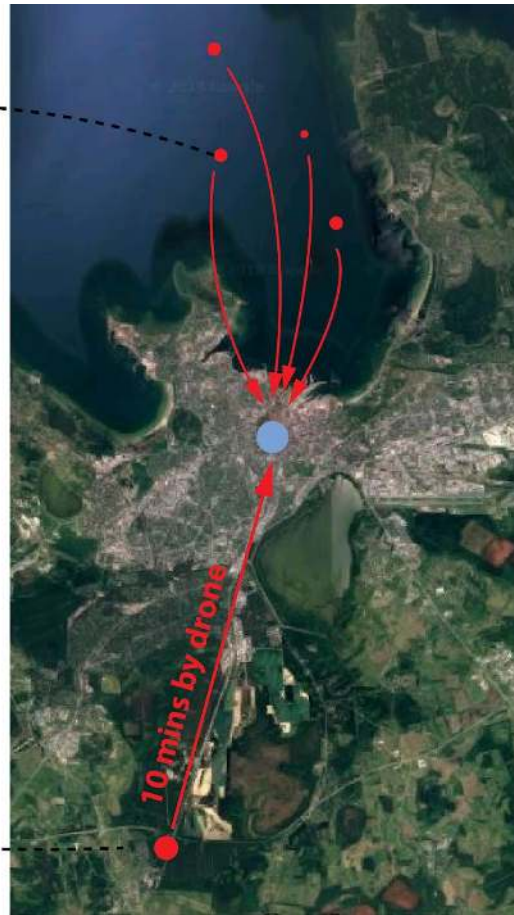
Local

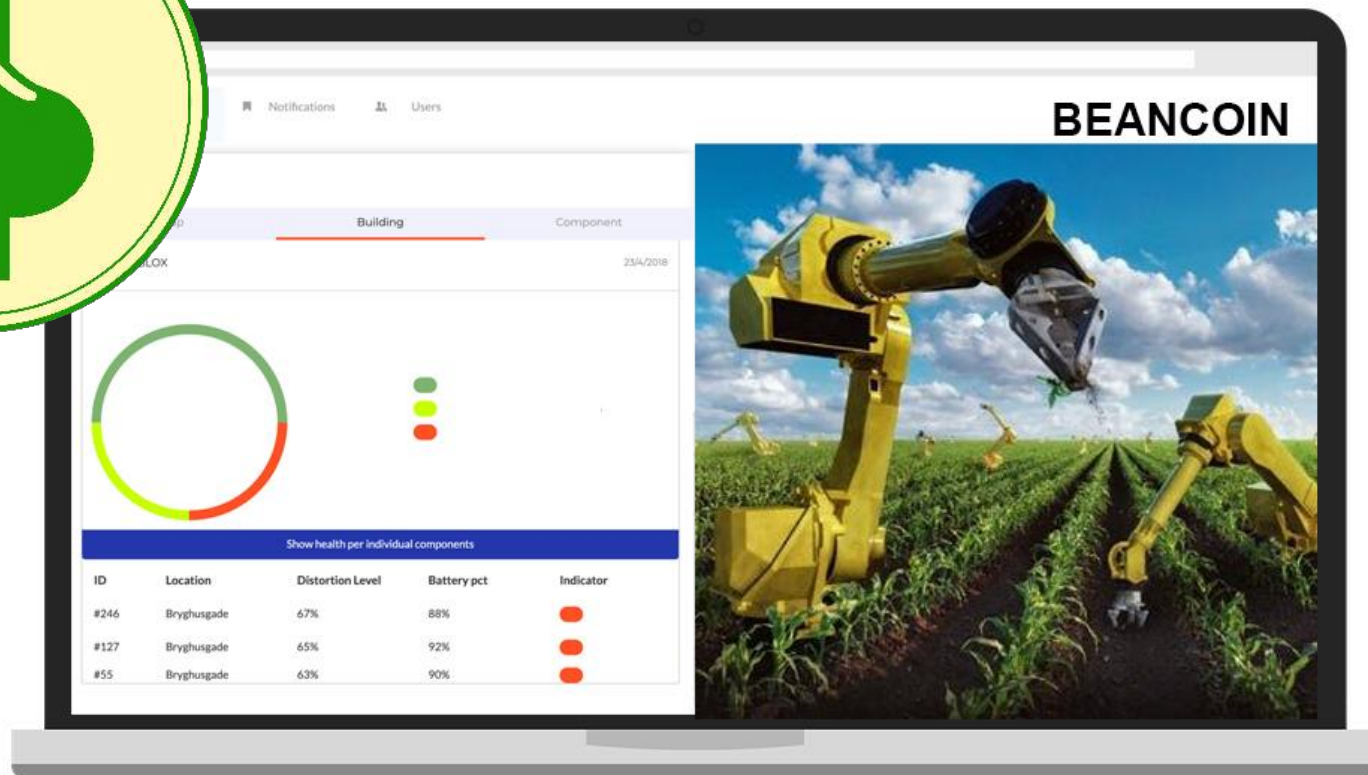
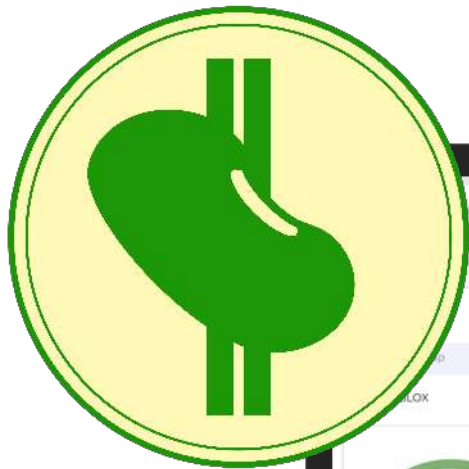
# The Future



algae chips from Tallinn Bay

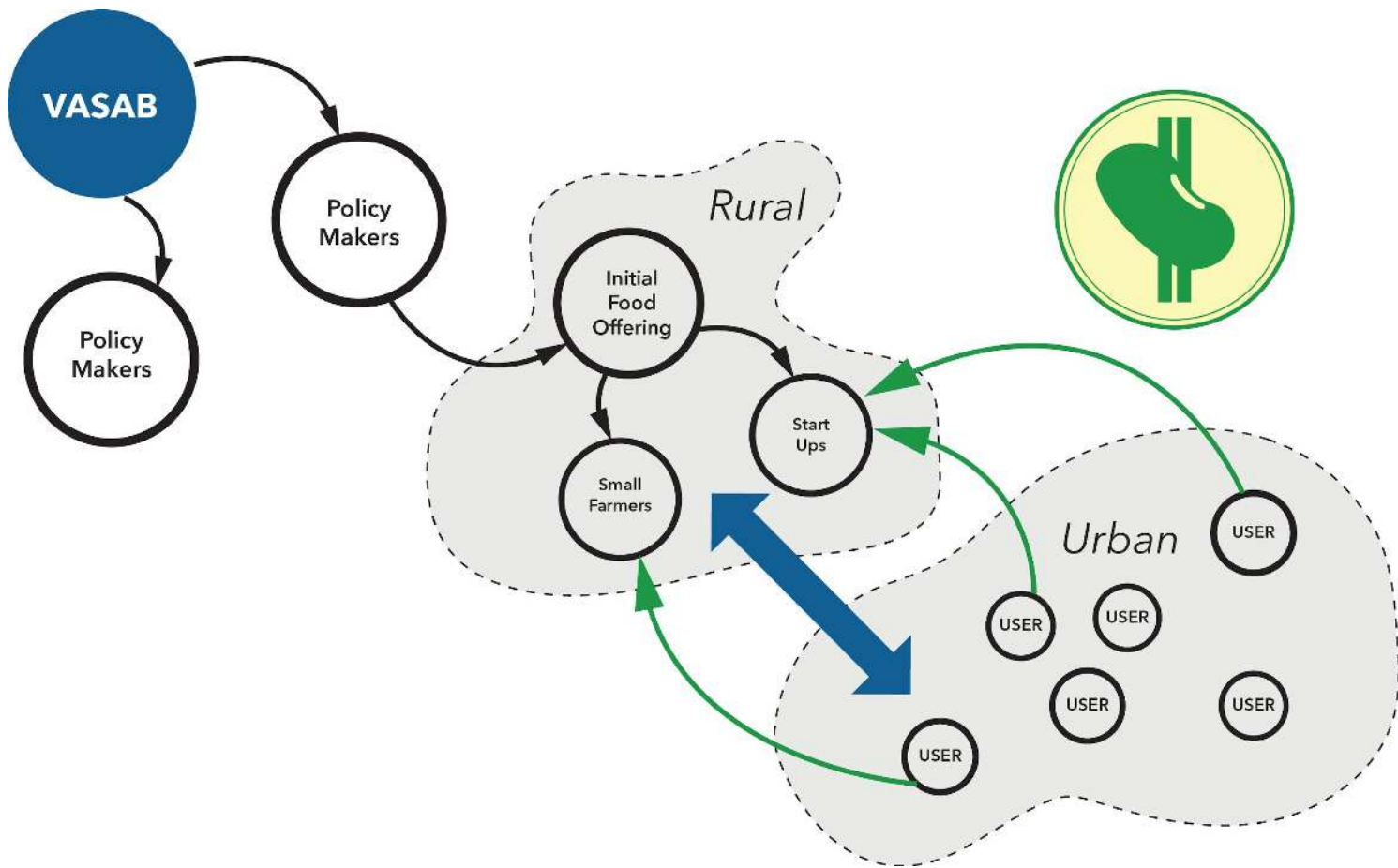
fermented beans from Saku







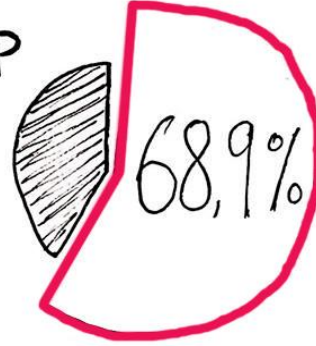
# Policy 2050



# Policy 2019



EU's  
CAP



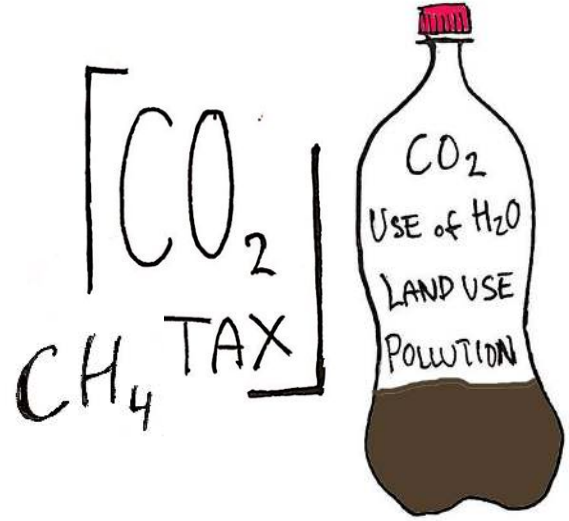
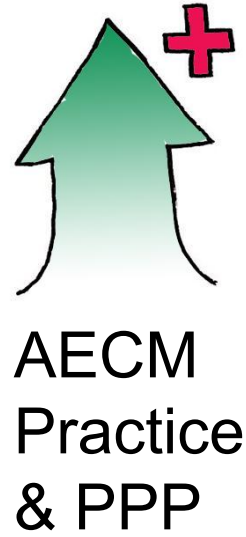
Goes to  
intensive  
farming...



... growing food  
for animal  
breeding



# Policy 2050



Label food  
with real  
numbers



## Farmers

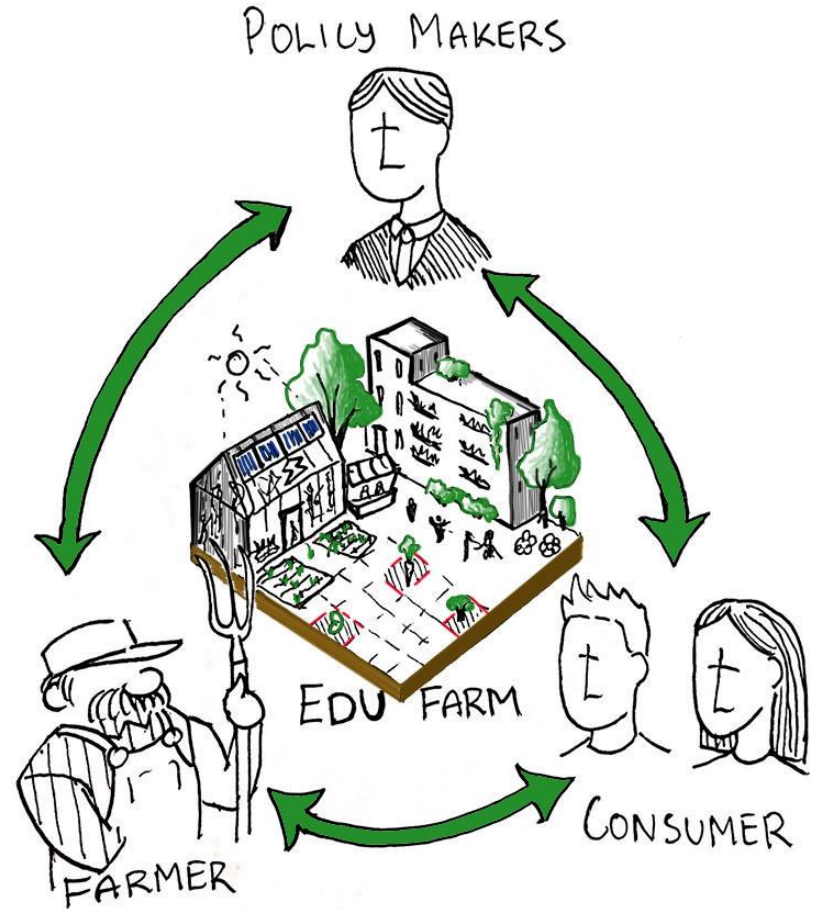
- **Support for local legume breeders**
- **Training**
- **Collaboration & Networking- Set up of Baltic Protein Centres of Excellence (comparable to Danube Soya Initiative)**

**Innovation- Bioprocessing facilities for protein extraction**

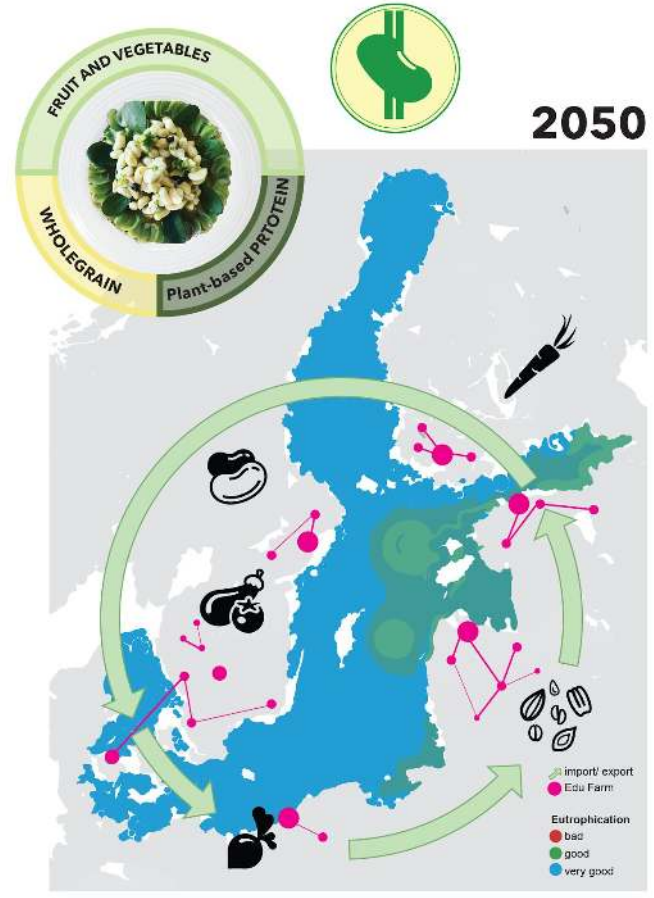
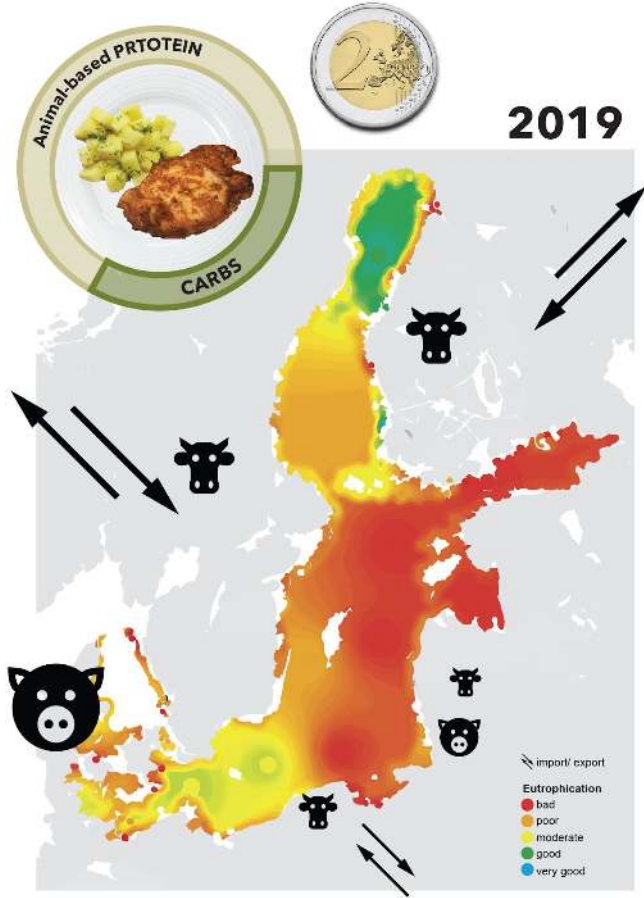


# Local/Regional

## the Edu Farm Network



# Current/Future



**Thank you!**

## Benefits

- Ecological (decrease pollution, sustainable use of resources, decrease eutrophication)
- Economical (job opportunities in rural area, policentral system of resettlement)
- Social (public health)
- Cultural (sustainable lifestyle)
- Demographic