

Ministry of Environmental
Protection and Regional
Development
Republic of Latvia

Fisheries data for cooperation with HELCOM FISH group

Kristīne Kedo

*12th Meeting of HELCOM-VASAB Data expert sub-group
Warsaw, 3rd October, 2019*



Ministry of Environmental
Protection and Regional
Development
Republic of Latvia



Tasks for HELCOM-VASAB MSP Working Group 19th meeting:

- *"HELCOM-VASAB MSP WG 18-2019 requested Baltic Sea Region MSP Data Expert Sub-Group to initiate a discussion on which fisheries data is needed in national MSP with the goal to identify common requirements for aggregated fisheries data. The Meeting will be informed of the progress of the BSR MSP Data Expert Sub-Group on this matter."*



Ministry of Environmental
Protection and Regional
Development
Republic of Latvia

Why and what do we need?

- **What data is used for national MSPs?**
- **What data from fisheries is the most important for transboundary consultations?**
 - ✓ Where countries fish outside their waters?
 - ✓ Where are the essential fish habitats?



Ministry of Environmental
Protection and Regional
Development
Republic of Latvia



Fisheries data (INPUT data tables):

Fishing areas or Fishery area (where BSA nation fish):

- Spawning and nursery areas
- Important fishery ports
- Fish migration
- Fishing density
- Restrictions



Ministry of Environmental
Protection and Regional
Development
Republic of Latvia

Fisheries data availability (nationally):



	Denmark	Estonia	Finland	Germany	Latvia	Lithuania	Poland	Russia	Sweden	HELCOM
Fishery area (where BSA nation fish)	?	written info	GIS	?	GIS	GIS	WMS, pdf	written info	?	H-WMS, H-GIS
Spawning and nursery areas	?	GIS	GIS	?	GIS	GIS	written	-	?	H-GIS
Important fishery ports	written	written	GIS	?	written	GIS	written	written	WMS, GIS	-
Fish migration	WMS, WFS	-	GIS	?	?	GIS	written	-	WMS, GIS	H-WMS, H-GIS
Fishing density		written	H-WMS, H-GIS	written			written	written		H-WMS, H-GIS
Restrictions	WMS, WFS	?	?	?	?	written	written	?	?	H-WMS, H-GIS



Ministry of Environmental
Protection and Regional
Development
Republic of Latvia

ICES Fisheries Overviews

Published 2 September 2019

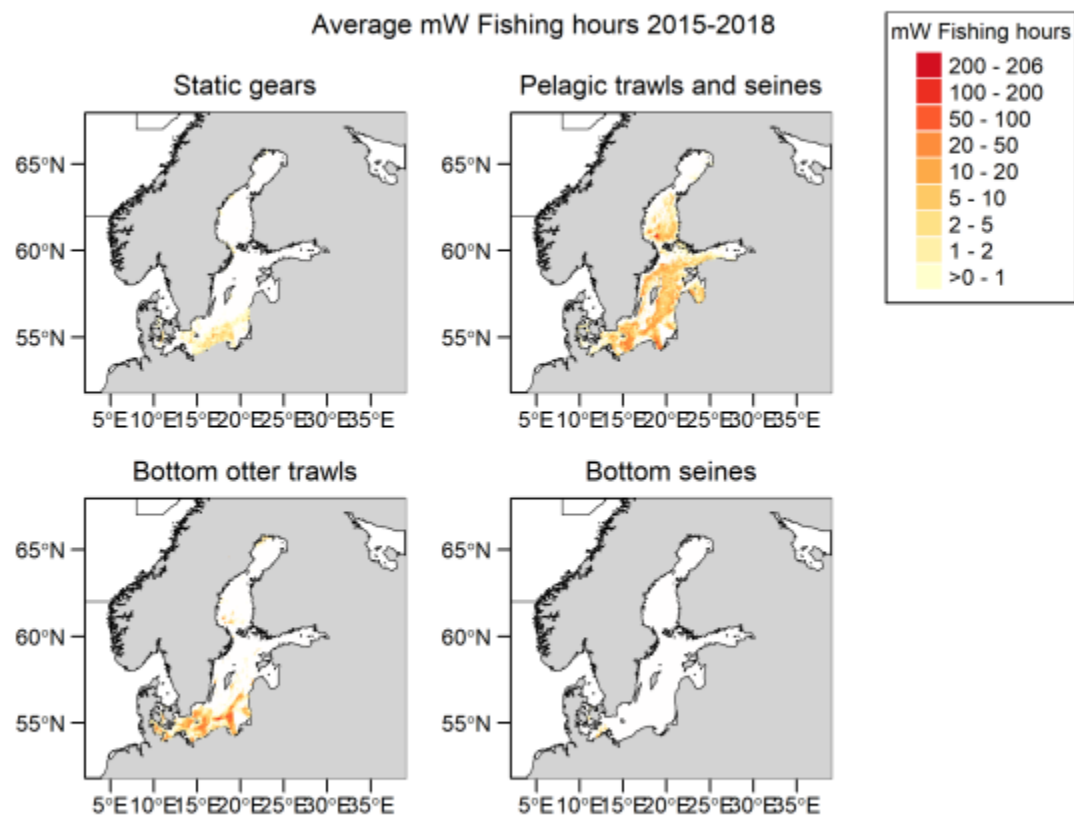
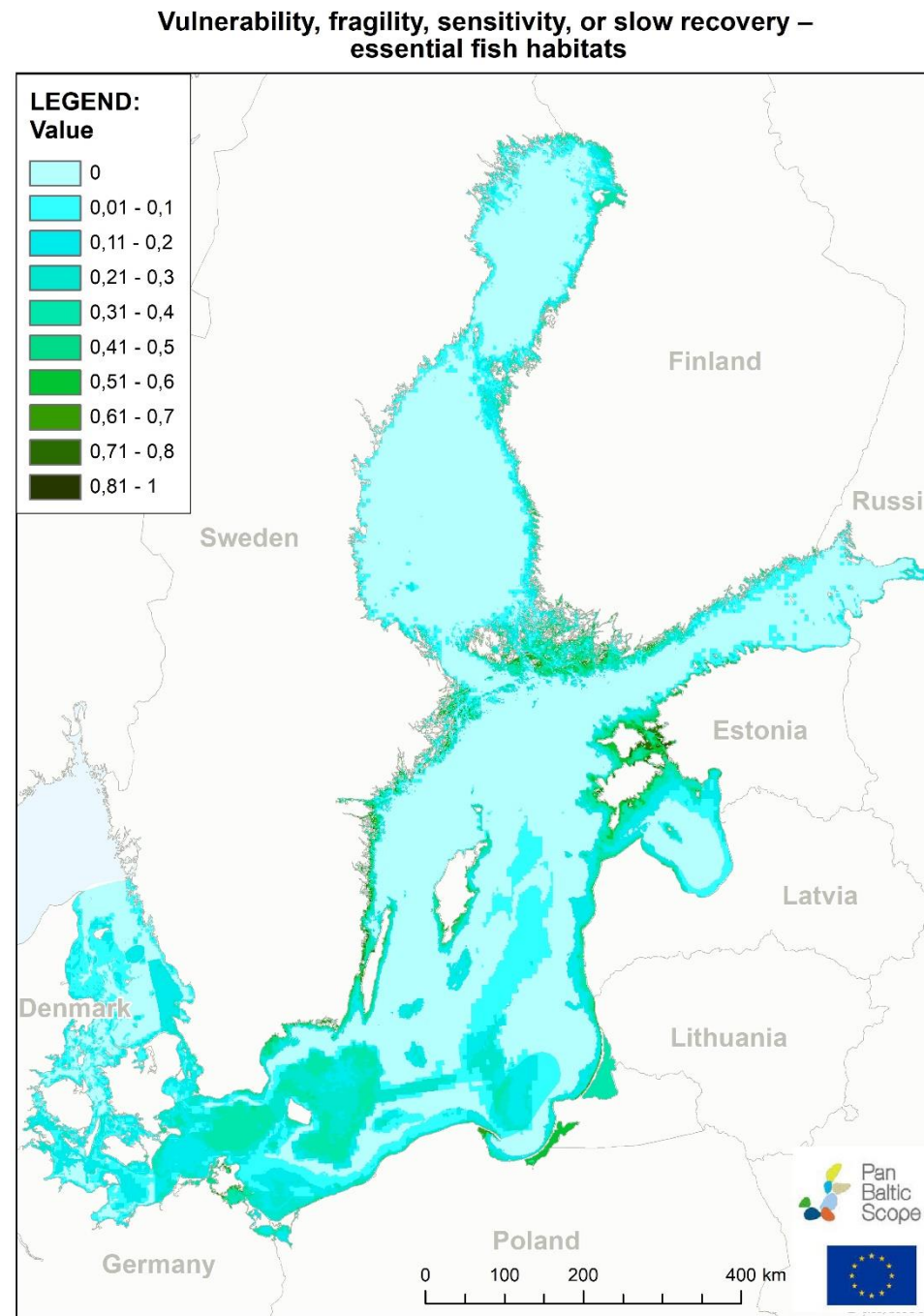
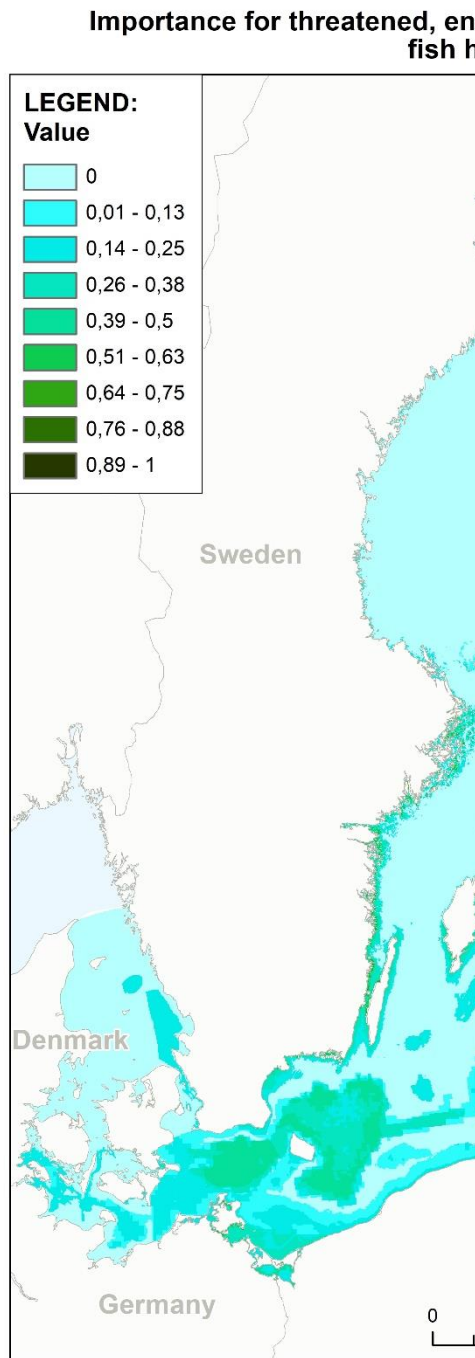
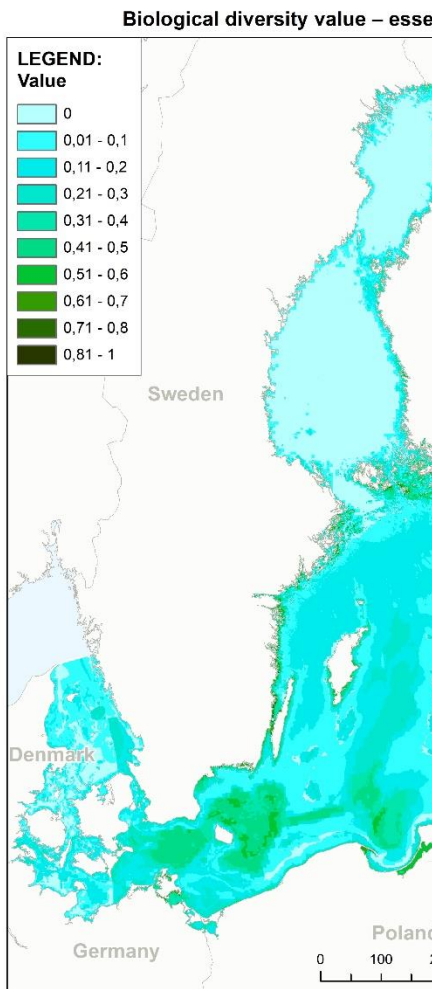


Figure 9

Spatial distribution of average fishing effort (mW fishing hours) in the Baltic Sea during 2015–2018 by gear type. Fishing effort data are only shown for vessels >12 m carrying VMS. Russian data are absent as they were not received.



Fisheries sector. CBC area

LEGEND

- Main cities
- Main roads
- Railways
- - - Territorial waters
- - - Exclusive Economic Zone
- - - Border of Central Baltic case area
- Administrative borders

Existing use layers

- Fishing ports
- Landing places (EE)

Trap nets (EE)

Pelagic trawl fishery:

EE

29

1

LV (t, 2004-2013)

830

4,5

SE (kg, 2008-2012)

5744

0

Demersal trawl fishery:

LV (t, 2004-2013)

55,95

1

SE (kg, 2008-2012)

1312

0

Gillnet fishery:

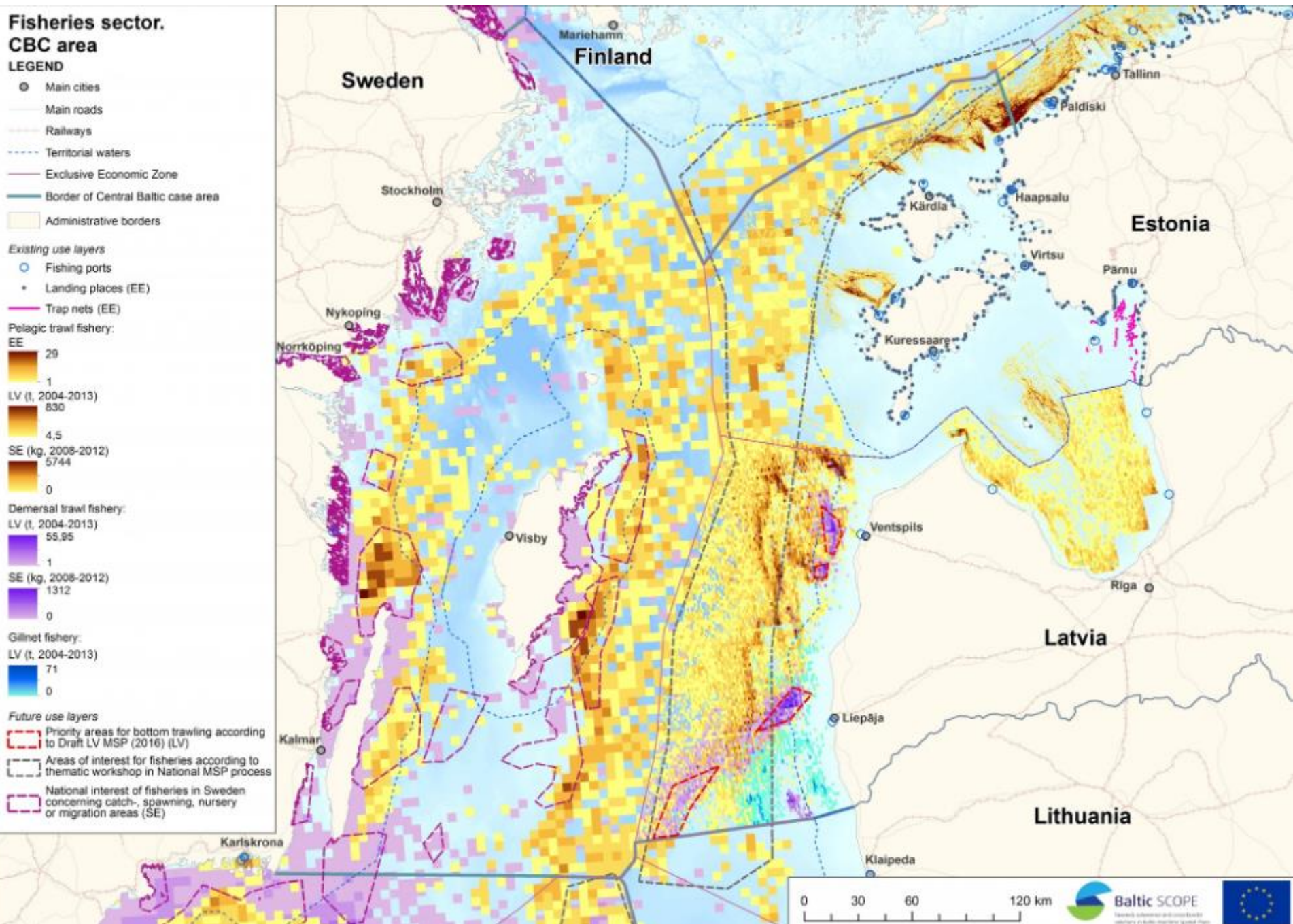
LV (t, 2004-2013)

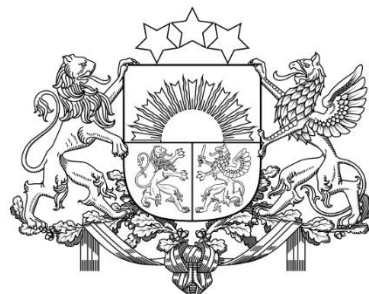
71

0

Future use layers

- Priority areas for bottom trawling according to Draft LV MSP (2016) (LV)
- Areas of interest for fisheries according to thematic workshop in National MSP process
- National interest of fisheries in Sweden concerning catch-, spawning, nursery or migration areas (SE)





Ministry of Environmental
Protection and Regional
Development
Republic of Latvia

Thanks!

kristine.kedo@varam.gov.lv