



**LIETUVA 2030**  
bendras planas

# COMPASS 2030

Comprehensive Plan of the Territory of the Republic of Lithuania

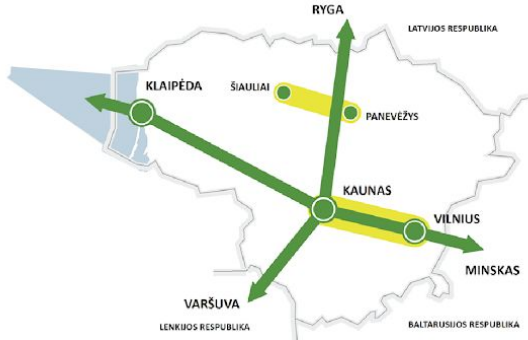
VASAB CSPD/BSR webinar on sharing the knowledge

Martynas Marozas

17 June 2020

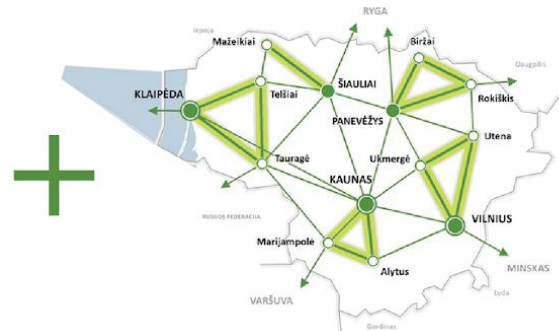
**Compass 2030 is an indicator-and-spatial-data-based tool for a well informed and substantiated spatial planning process. This tool is currently used to refine and detail the conceptual frameworks set during the Concept phase of the CPRPL**

# The CPTRL detail phase aims at creating a strong logical link between national conceptual frameworks and regional planning scale



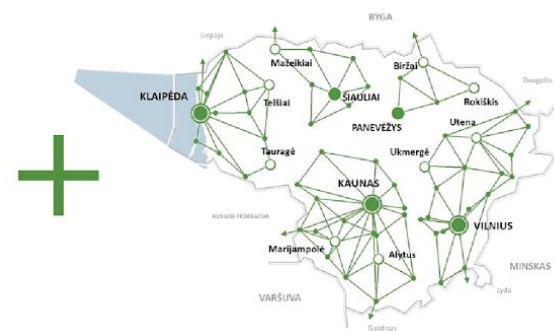
## International infrastructure

Klaipėda center and partner centers of Šiauliai and Panevėžys, Vilnius and Kaunas, vision of the Baltic Sea region



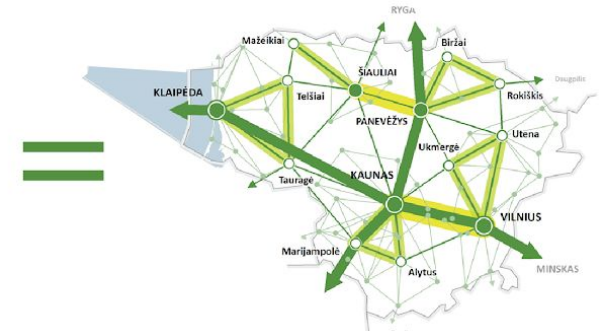
## Urban structures in a national level

Identified partnerships: 1. Vilnius - Utena - Ukmergė; 2. Kaunas - Marijampolė - Alytus; 3. Klaipėda - Tauragė - Telšiai; 4. Šiauliai - Mažeikiai; 5. Panevėžys - Biržai - Rokiškis



## Urban structures on a regional level

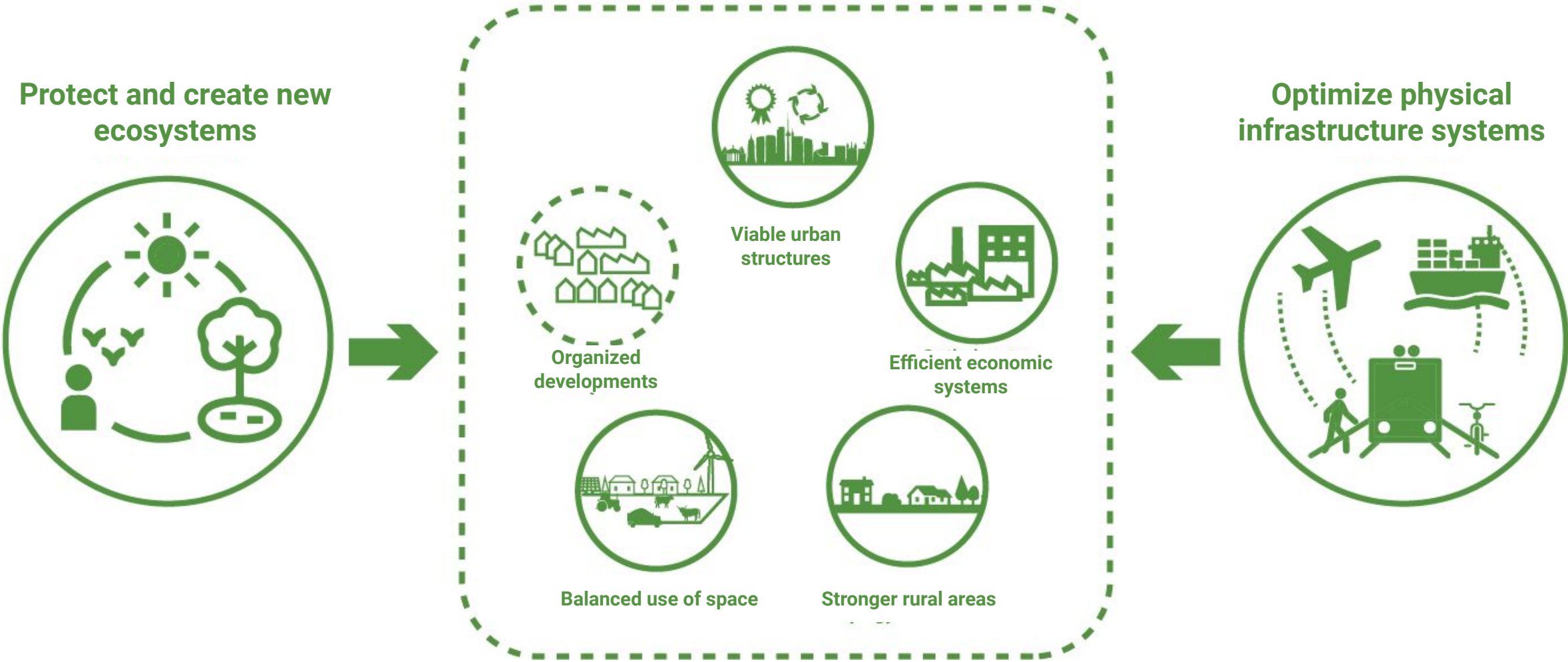
Close links are being established not only with the dominant urban centers in the region, but also with other centers affected by partnerships between regional centers.



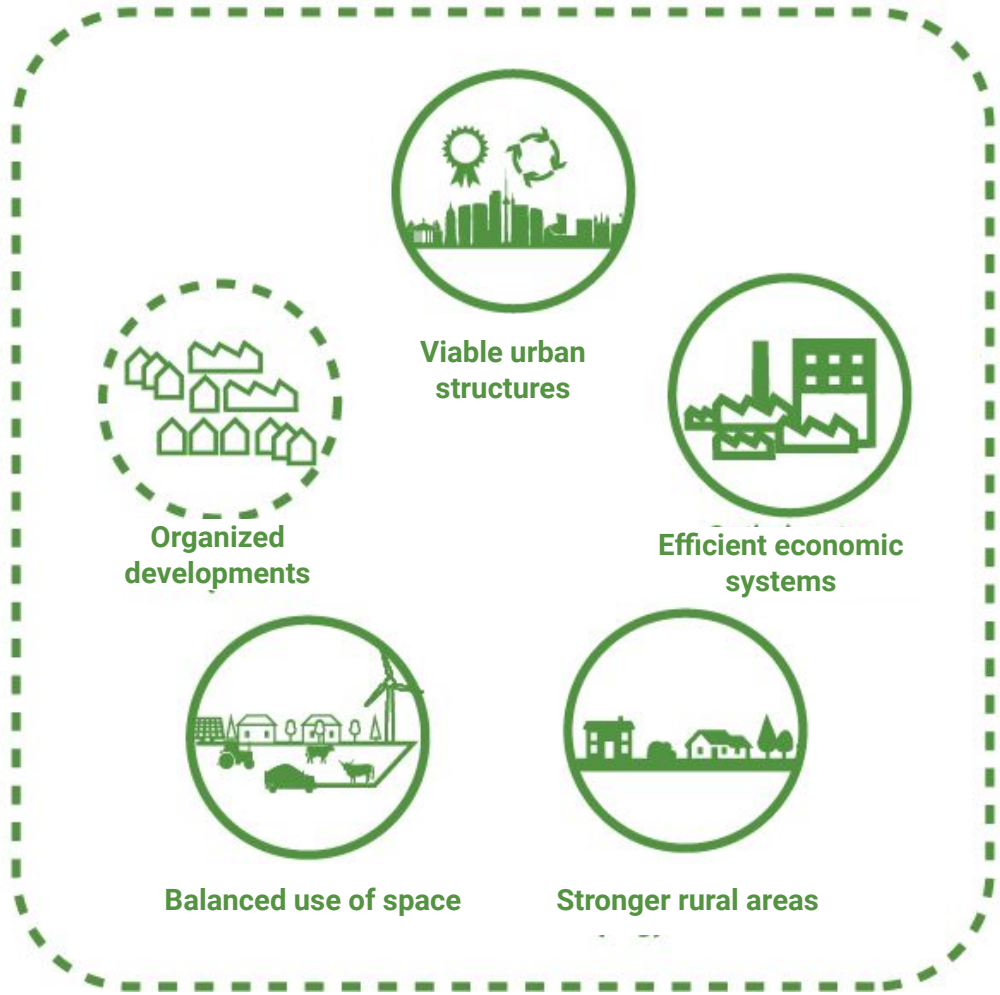
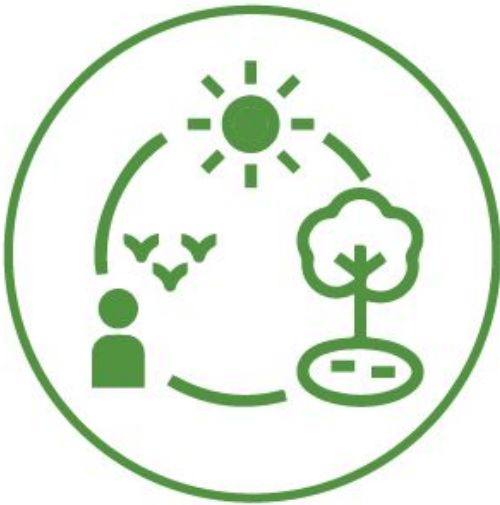
## National urban framework

Polycentric hierarchical network of residential areas operating at all levels: international, national, regional, local

# Objective for CPTRL detail phase



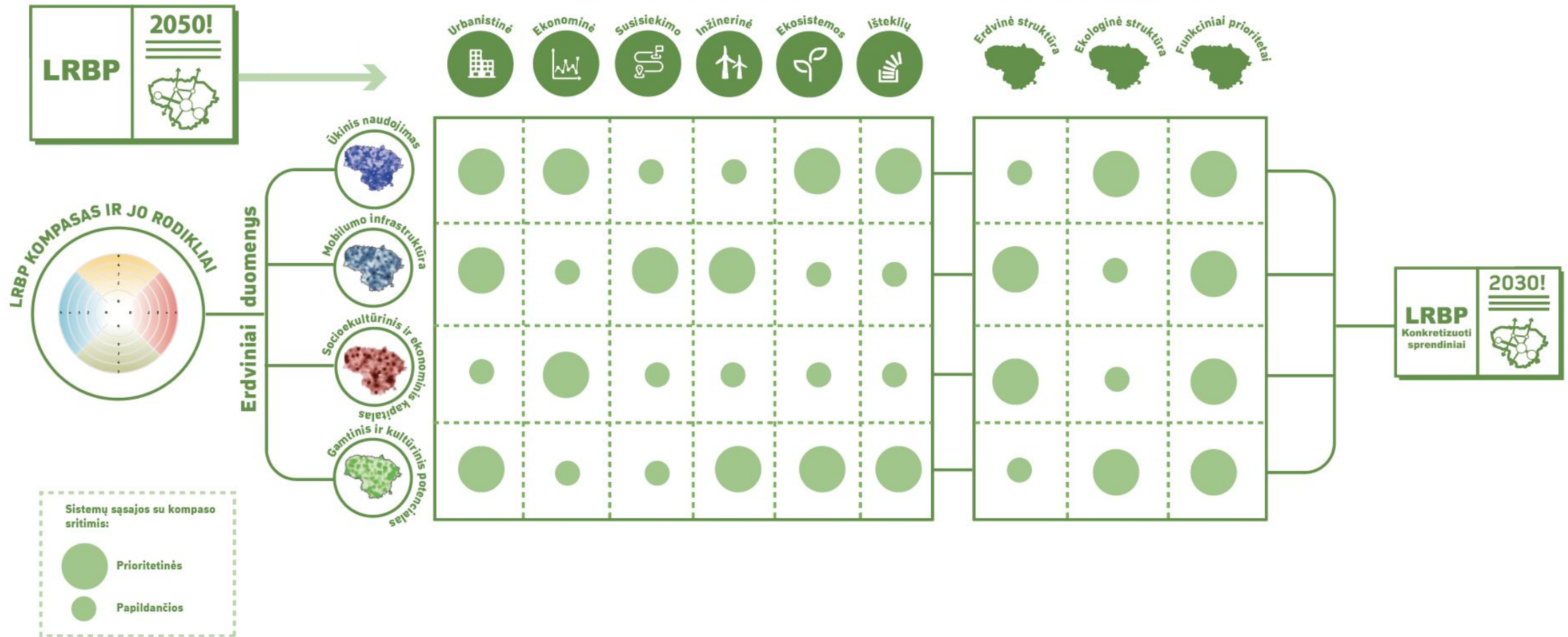
Protect and create new ecosystems



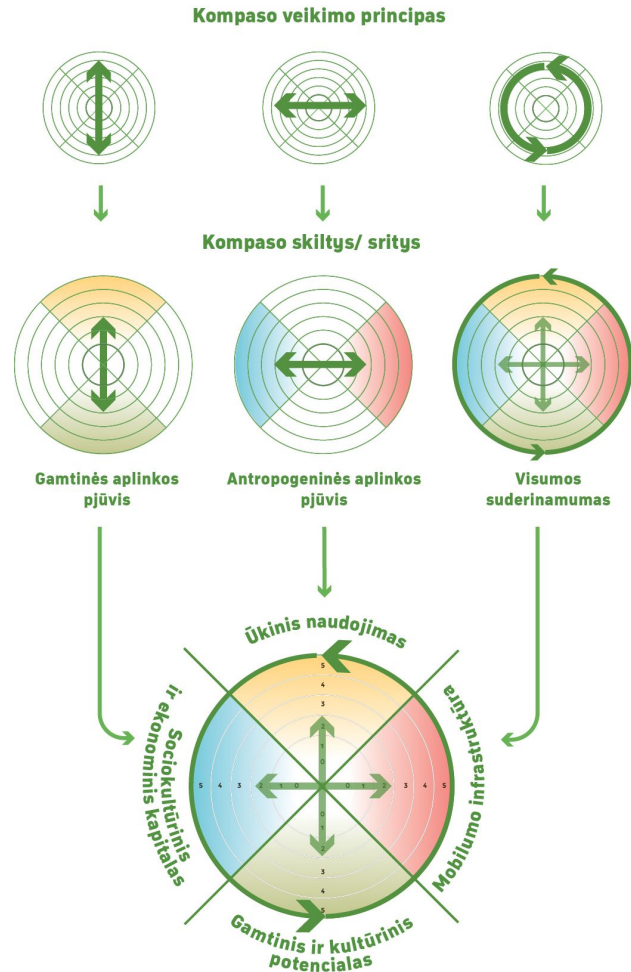
Optimize physical infrastructure systems



# CPTRL compass 2030 methodological scheme

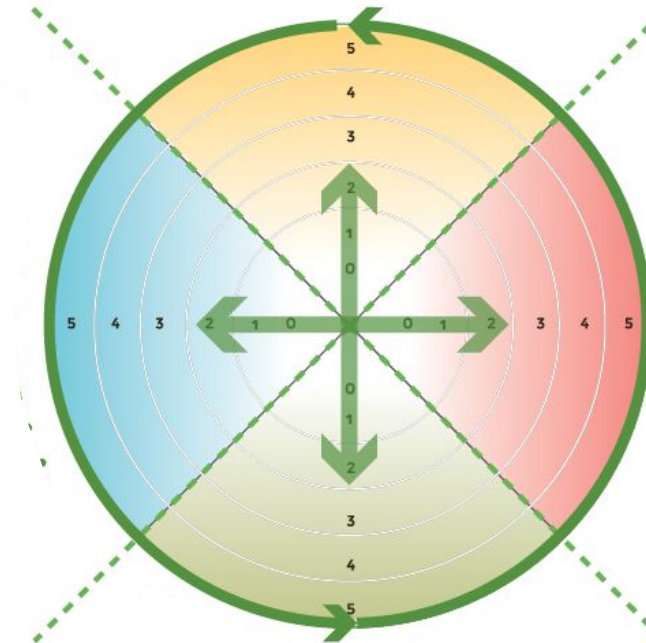


# Compass 2030 structure is based on a balanced coexistence and use of natural and anthropogenic environments



**Sociocultural and socioeconomic capital**

**Use of resources**



**Access and mobility**

**Natural and cultural potential**

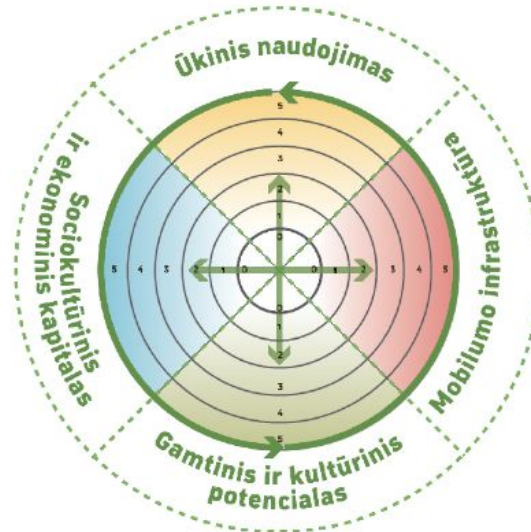
# CPTRL compass 2030 indicators

## Use of resources

- Soil fertility rating
- Forests for production
- Surface of detail surveyed natural resources
- Productive areas at sea

## Sociocultural and socioeconomic capital

- Workplaces
- Access to services



## Access and mobility

- Public transport intensity
- Bicycle paths
- Road network
- Railway network
- Waterway network

## Natural and cultural potential

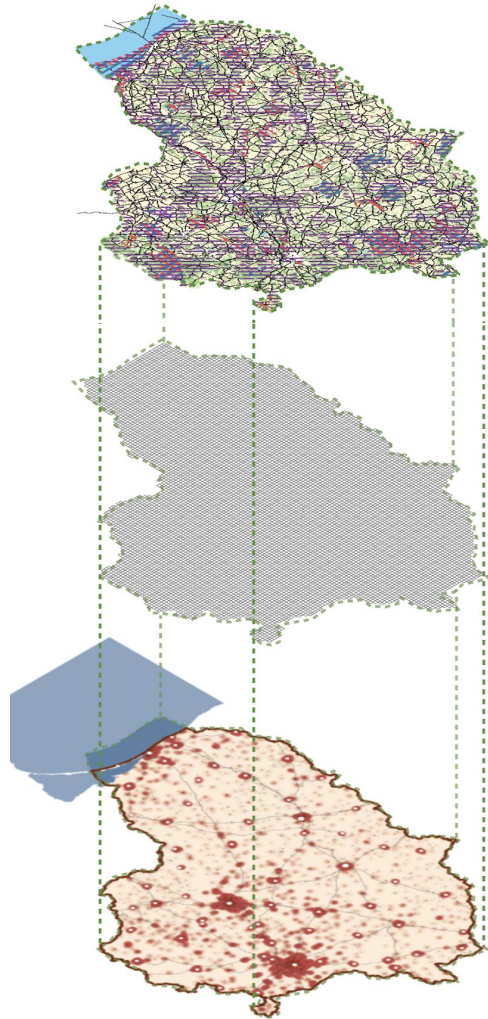
- Protected areas
  - Natura2000
- Preservation worthy Landscape
  - Natural frame
  - Sinkhole region
- Cultural heritage sites

# List of Compass 2030 indicators

FIELD	INDICATOR	UNIT	WHAT IS BEING EVALUATED	SOURCE
<b>Sociocultural and socioeconomic capital</b>	<b>Workplaces</b>	<b>No</b>	Darbo vietų skaičius vertinamaisiais metais gardelėje	GIS įrankis „Sumanūs regionai“
	<b>Access to services</b>	<b>km<sup>2</sup></b>	Paslaugų pasiekiamumas per laiko vienetą. Skaičiuojamos gardelės plotas, kurį perdengia objekto pasiekiamumo teritorijos. Pasiekiamumas nustatomas būtinojo, dažno ir vidutinio poreikio paslaugoms atitinkamai 30 min., 45 min., ir 60 min. automobiliu.	GIS įrankis „Sumanūs regionai“; Kultūros ministerijos duomenys;
<b>Access and mobility</b>	<b>Public transport intensity</b>	<b>Avg. services p. day</b>	Vidutinis viešojo transporto (autobusų ir geležinkelių) reisų skaičius per parą, patenkantis į gardelę	GIS įrankis „Sumanūs regionai“, UAB „LG Keleiviams“, www.visimarsrutai.lt
	<b>Bicycle paths</b>	<b>km</b>	Dviračių takų ilgis km., patenkantis į gardelę	Lietuvos automobilių kelių direkcija, Openstreetmap
	<b>Road network</b>	<b>km</b>	Valstybinės ir vietinės reikšmės kelių, gatvių ilgis km., patenkantis į gardelę	GDB10LT, 2020
	<b>Railway network</b>	<b>km</b>	Geležinkelių ilgis km., patenkantis į gardelę	GDB10LT, 2020
	<b>Waterway network</b>	<b>km</b>	Vidaus vandens kelių ilgis km., patenkantis į gardelę	GDB10LT, 2020
<b>Use of resources</b>	<b>Soil fertility rating</b>	<b>Soil fertility rating, no</b>	Vidutinis dirvožemio našumo balas gardelėje	Dirv_DR10LT, 2020
	<b>Forests for production</b>	<b>km<sup>2</sup></b>	Ūkinių miškų plotas, patenkantis į gardelę	Miškų kadastras, 2020
	<b>Surface of detail surveyed natural resources</b>	<b>km<sup>2</sup></b>	Detaliai išžvalgytų naudingųjų iškasenų telkiniai, patenkantis į gardelę	Geologijos tarnybos duomenys, 2020
	<b>Productive areas at sea</b>	<b>km<sup>2</sup></b>	Smėlio kasybos plotai, dampungo vietos, infrastruktūros koridoriai, uostų reidai, patenkantis į gardelę	LRBP esamos būklės analizės duomenys; LR teritorijos bendrojo plano papildymas jūrinių teritorijų dalimi Saugomų teritorijų kadastras, 2020
<b>Natural and cultural potential</b>	<b>Protected areas</b>	<b>km<sup>2</sup></b>	Saugomų teritorijų plotas, patenkantis į gardelę	Saugomų teritorijų kadastras, 2020
	<b>Natura2000</b>	<b>km<sup>2</sup></b>	Natūra2000 teritorijų plotas, patenkantis į gardelę	Saugomų teritorijų kadastras, 2020
	<b>Preservation worthy Landscape</b>	<b>km<sup>2</sup></b>	Saugotinų vaizdingų kraštovaizdžio arealų plotas, patenkantis į gardelę	Nacionalinis kraštovaizdžio tvarkymo planas
	<b>Natural frame</b>	<b>km<sup>2</sup></b>	Gamtinio karkaso plotas, patenkantis į gardelę	LRBP koncepcijos duomenys
	<b>Sinkhole region</b>	<b>km<sup>2</sup></b>	Karstinio regiono plotas, patenkantis į gardelę	Geologijos tarnybos duomenys, 2020
	<b>Cultural heritage sites</b>	<b>km<sup>2</sup></b>	Kultūros paveldo teritorijų plotas, patenkantis į gardelę	Kultūros vertybių registras, 2020



## How does it work?



### Step 1

Geospatial data and series of indicators from publicly available sources are carefully reviewed and aggregated into one GIS file.

### Step 2

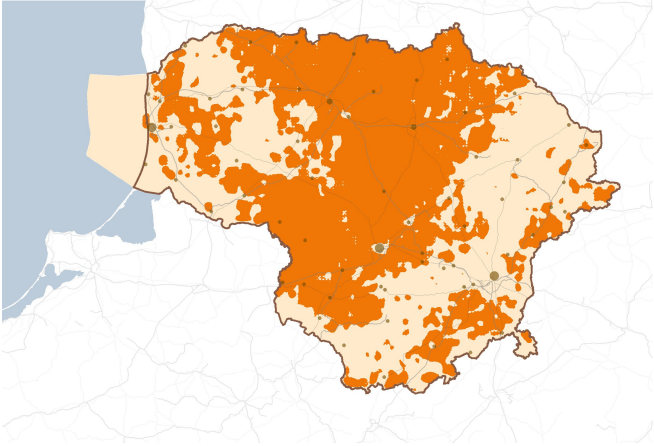
Geospatial data is subdivided into small pieces of Geospatial grid of **1km x 1km**. This strips the data of all unnecessary components and allows standardization of Geospatial values into values within the grid

### Step 3

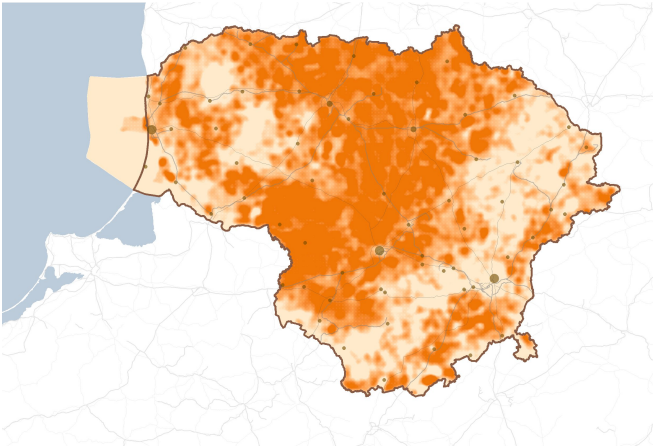
One of the conclusive compass layers is used to combine all data values into one comprehensive (thematic) layer.

# Compass 2030: Use of resources (preliminary results)

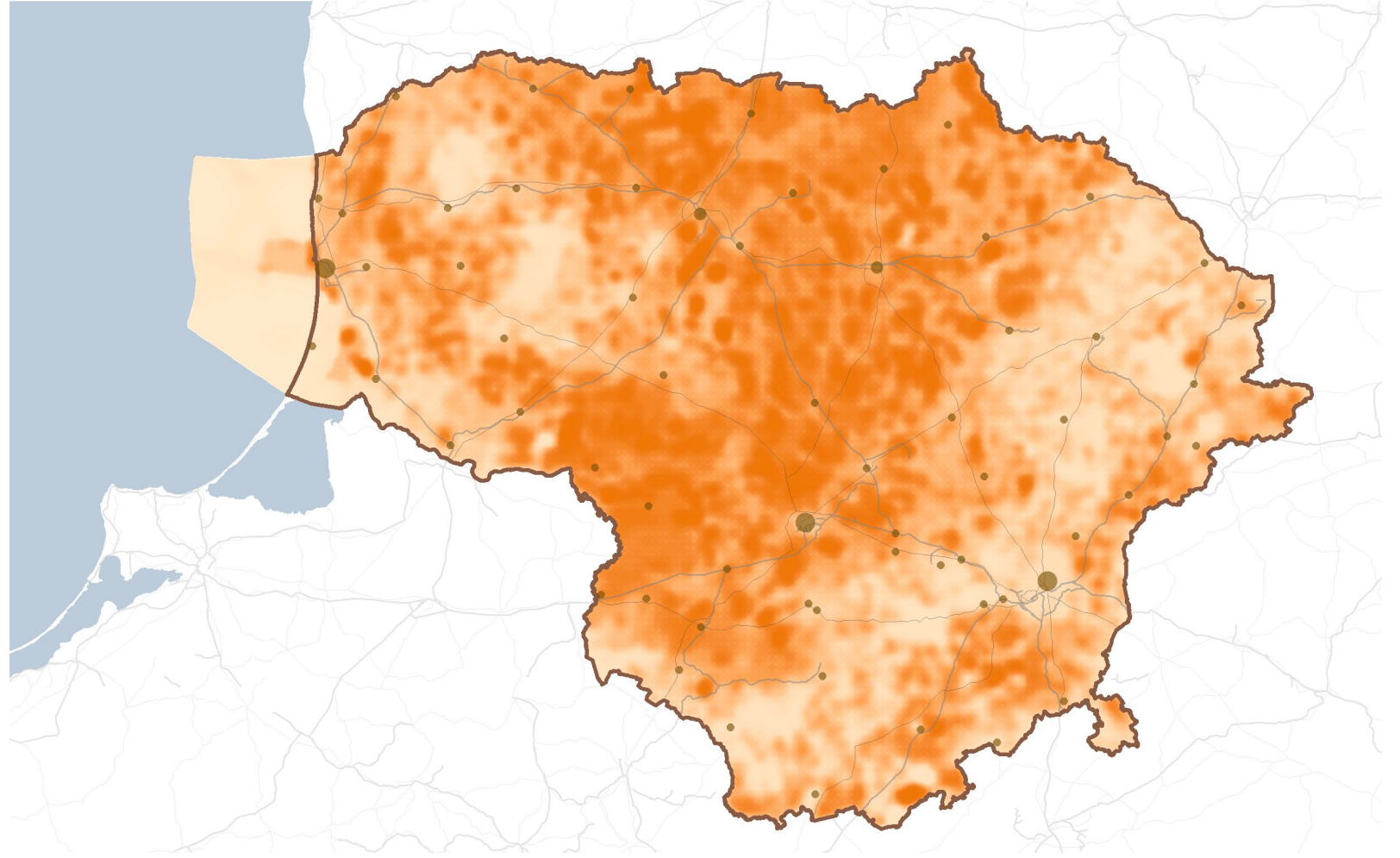
Std. dev.n=0,01



Std. dev. n=0,7

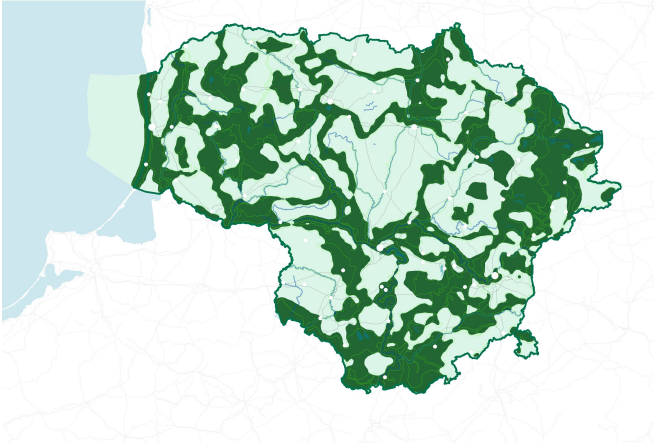


Histogram

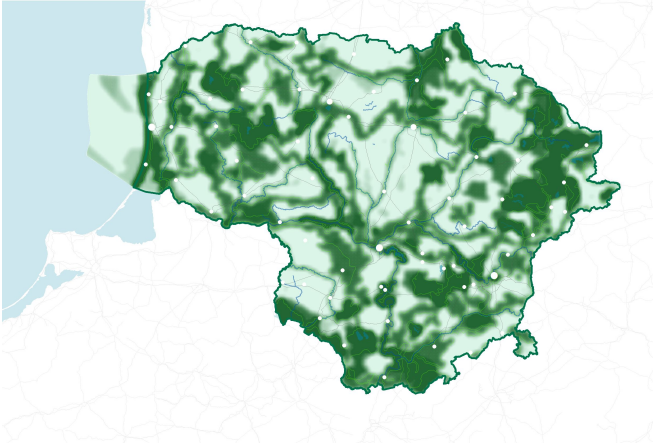


# Compass 2030: Natural and cultural potential (preliminary results)

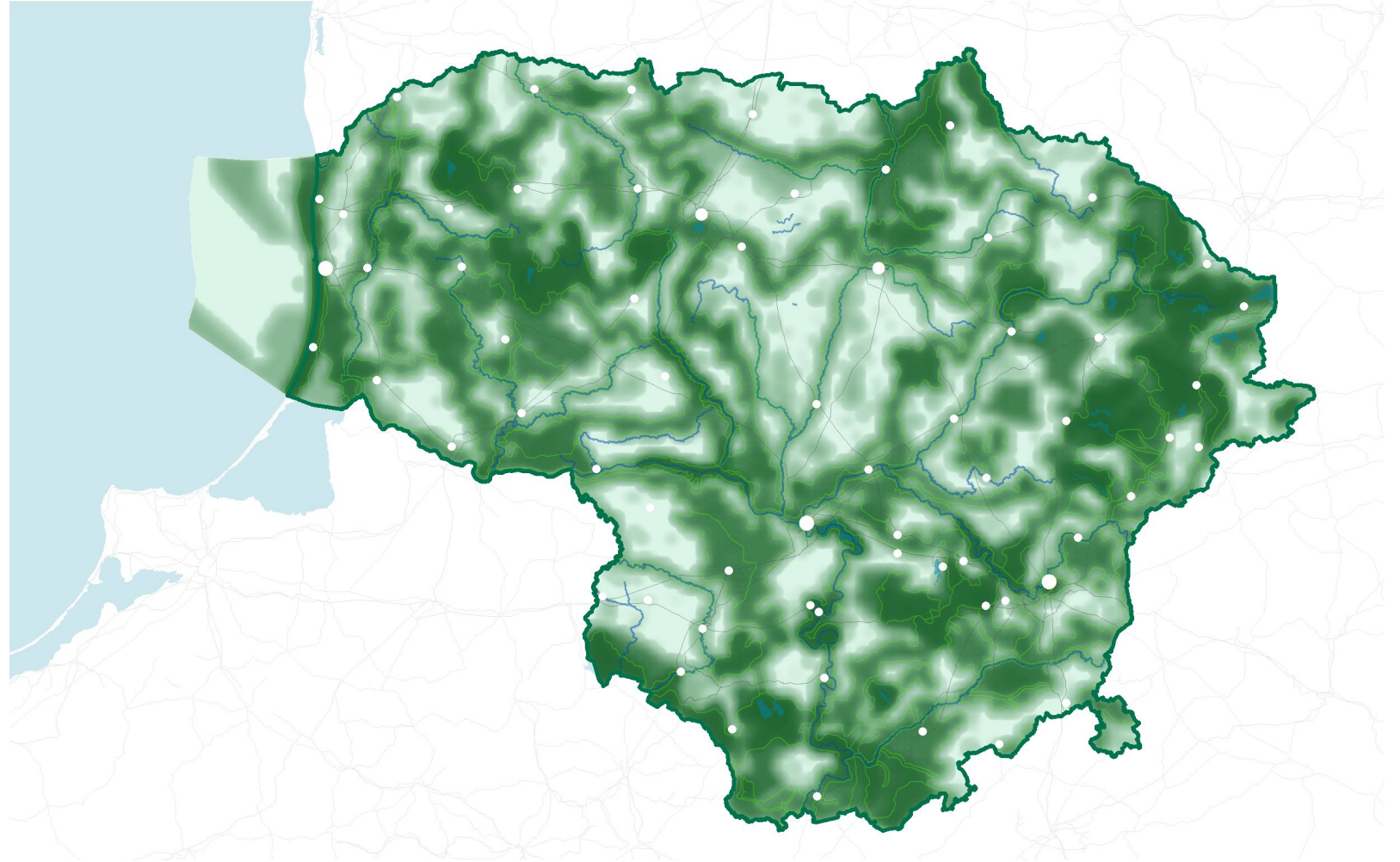
Std. dev.n=0,01



Std. dev. n=0,7

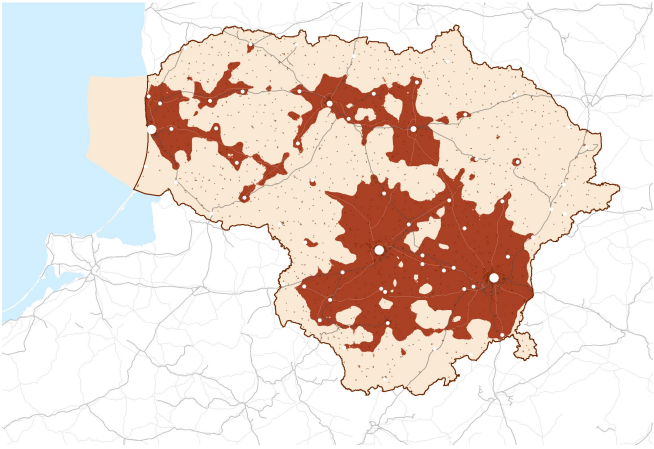


Histogram

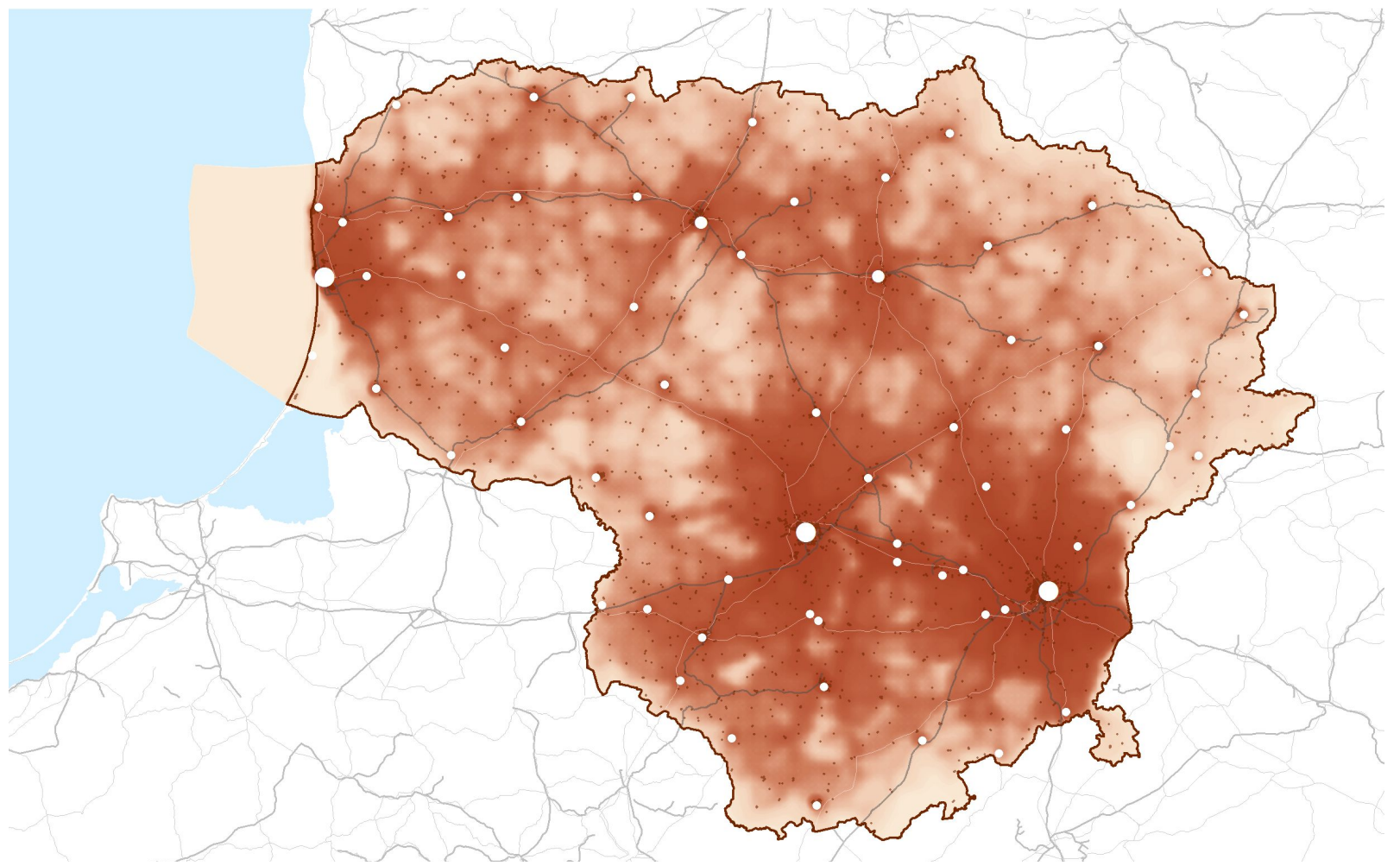


# Compass 2030: Sociocultural and socioeconomic capital (preliminary results)

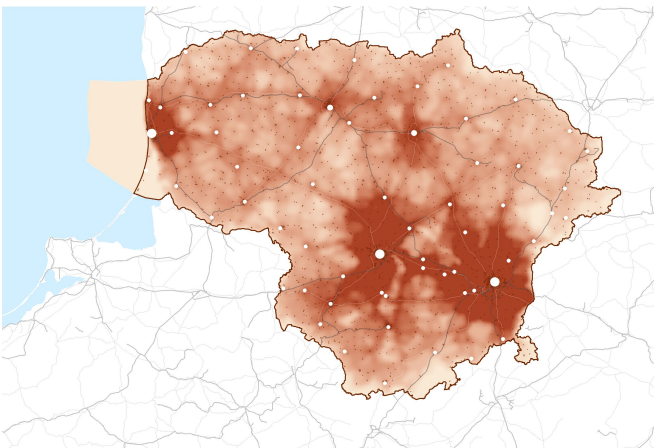
Std. dev.n=0,01



Histogram

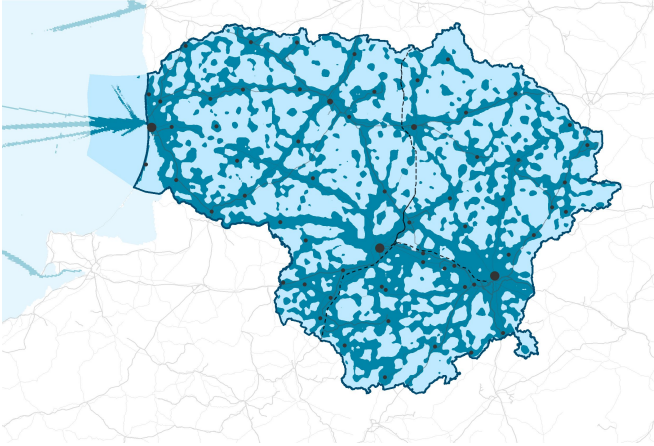


Std. dev. n=0,7

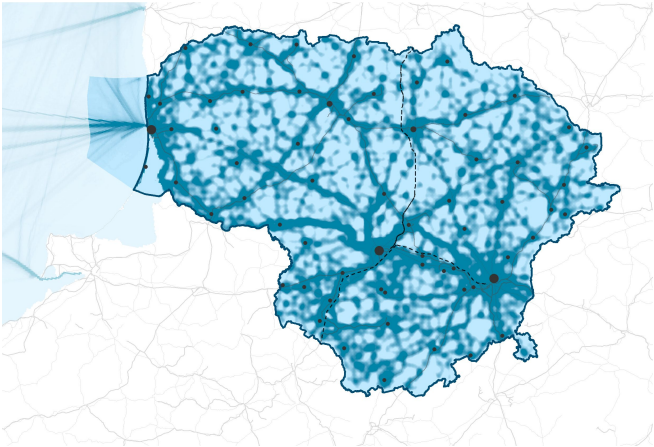


# Compass 2030: Access and mobility (preliminary results)

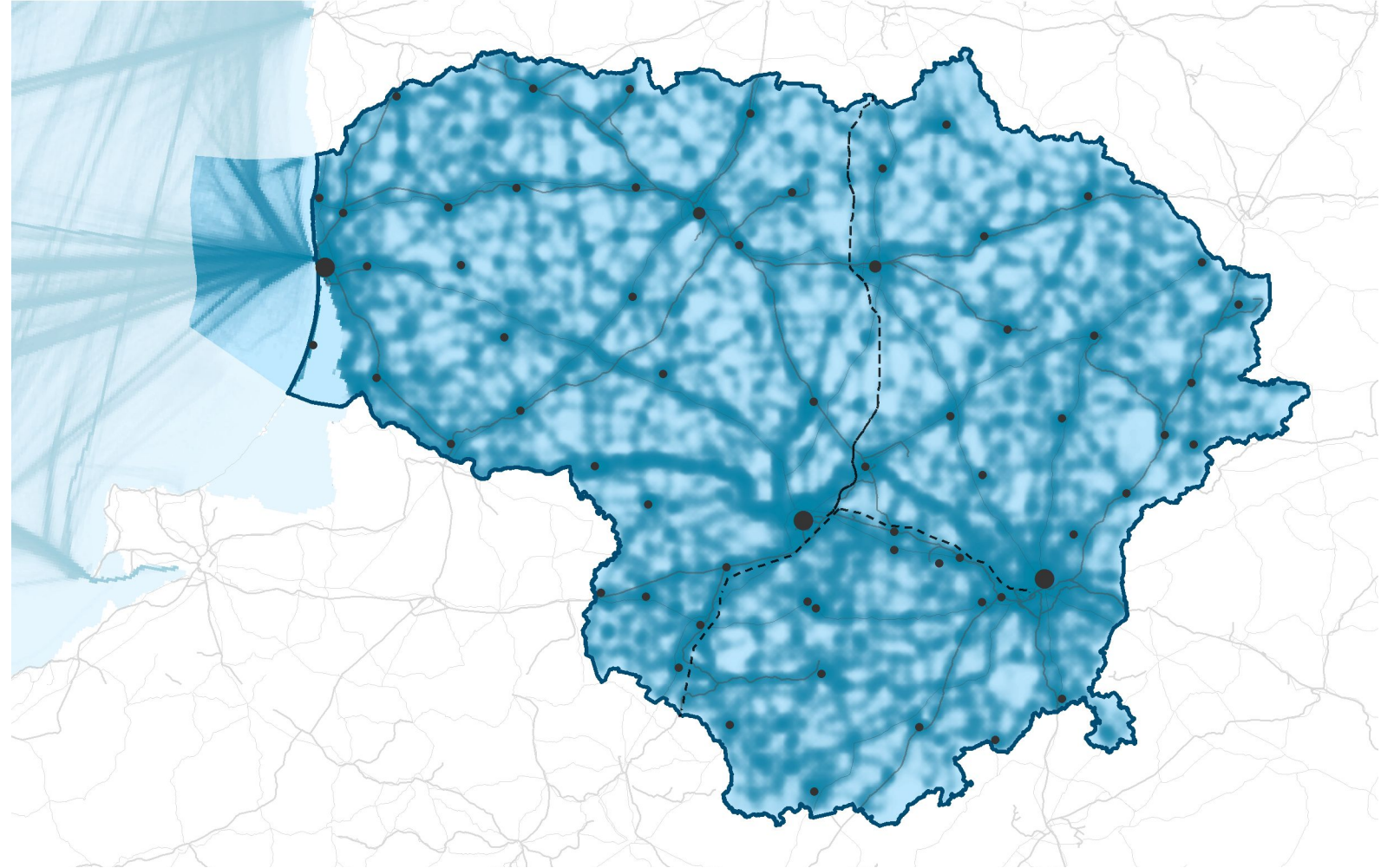
Std. dev.n=0,01



Std. dev. n=0,7

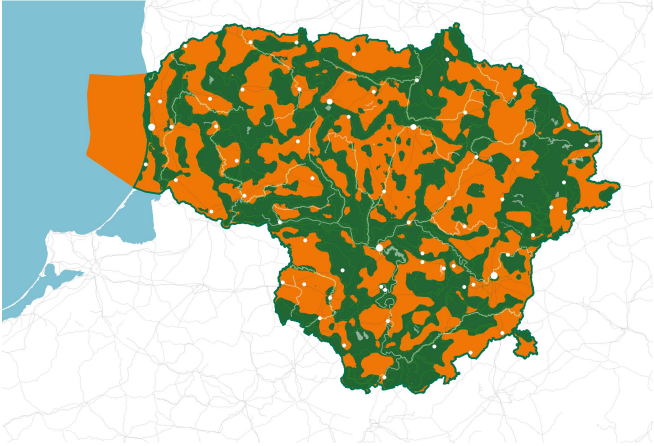


Histogram

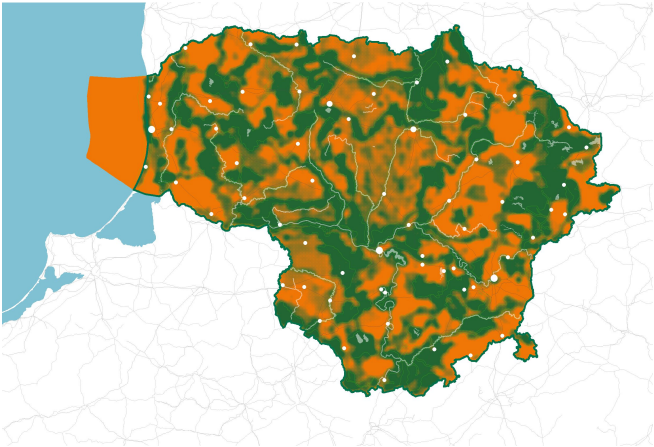


# Compass 2030. Synthesis #1: Natural environment (preliminary results)

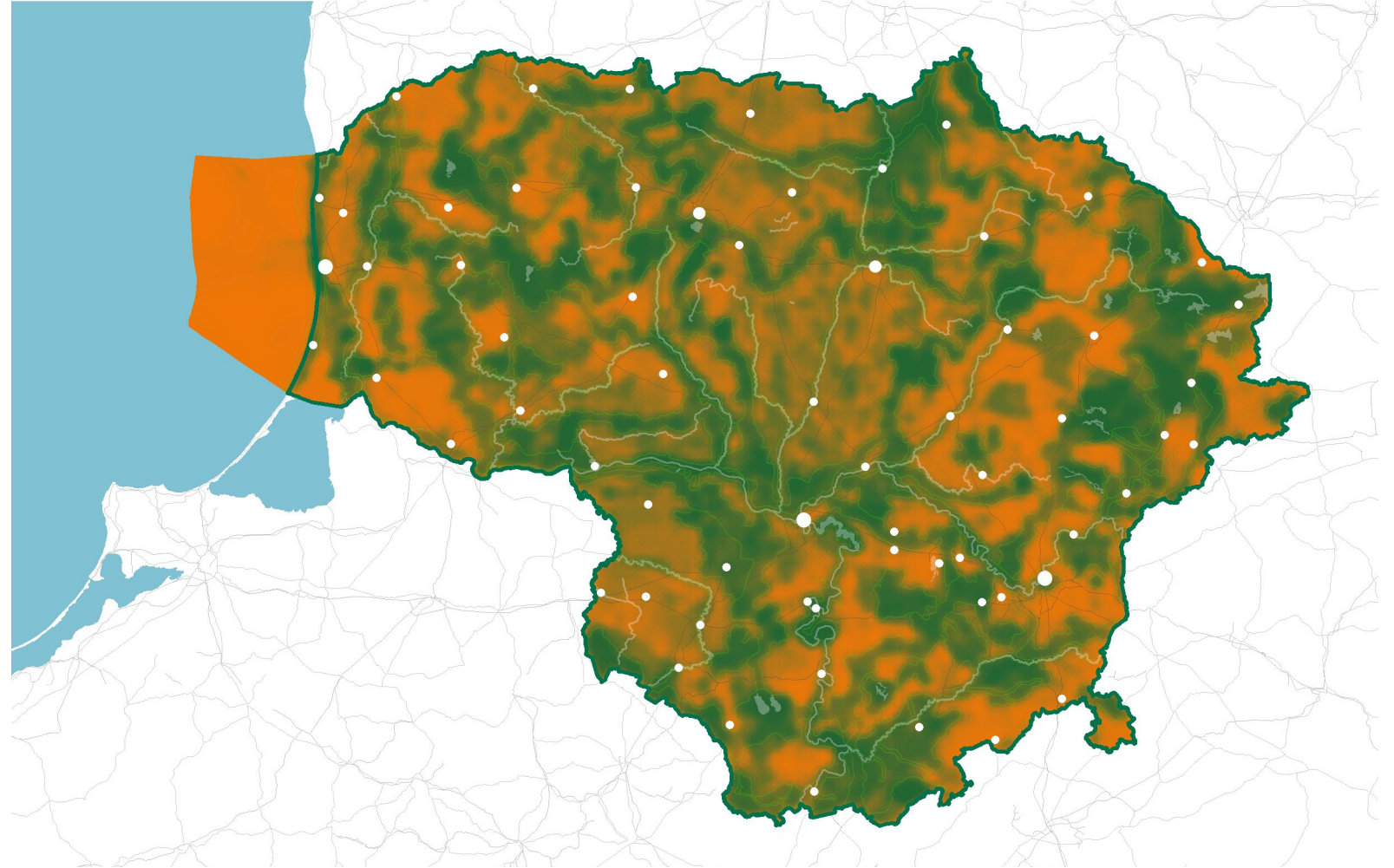
Std. dev.n=0,01



Std. dev. n=0,7

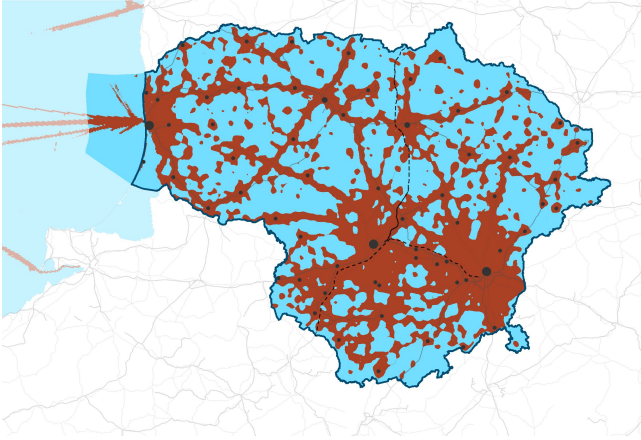


Histogram

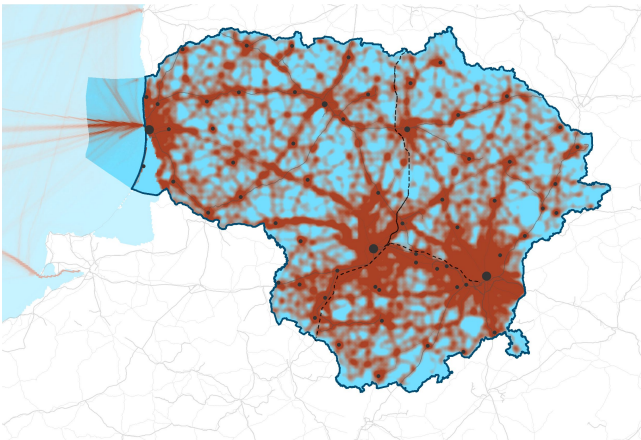


# Compass 2030. Synthesis #2: Anthropogenic environment (preliminary results)

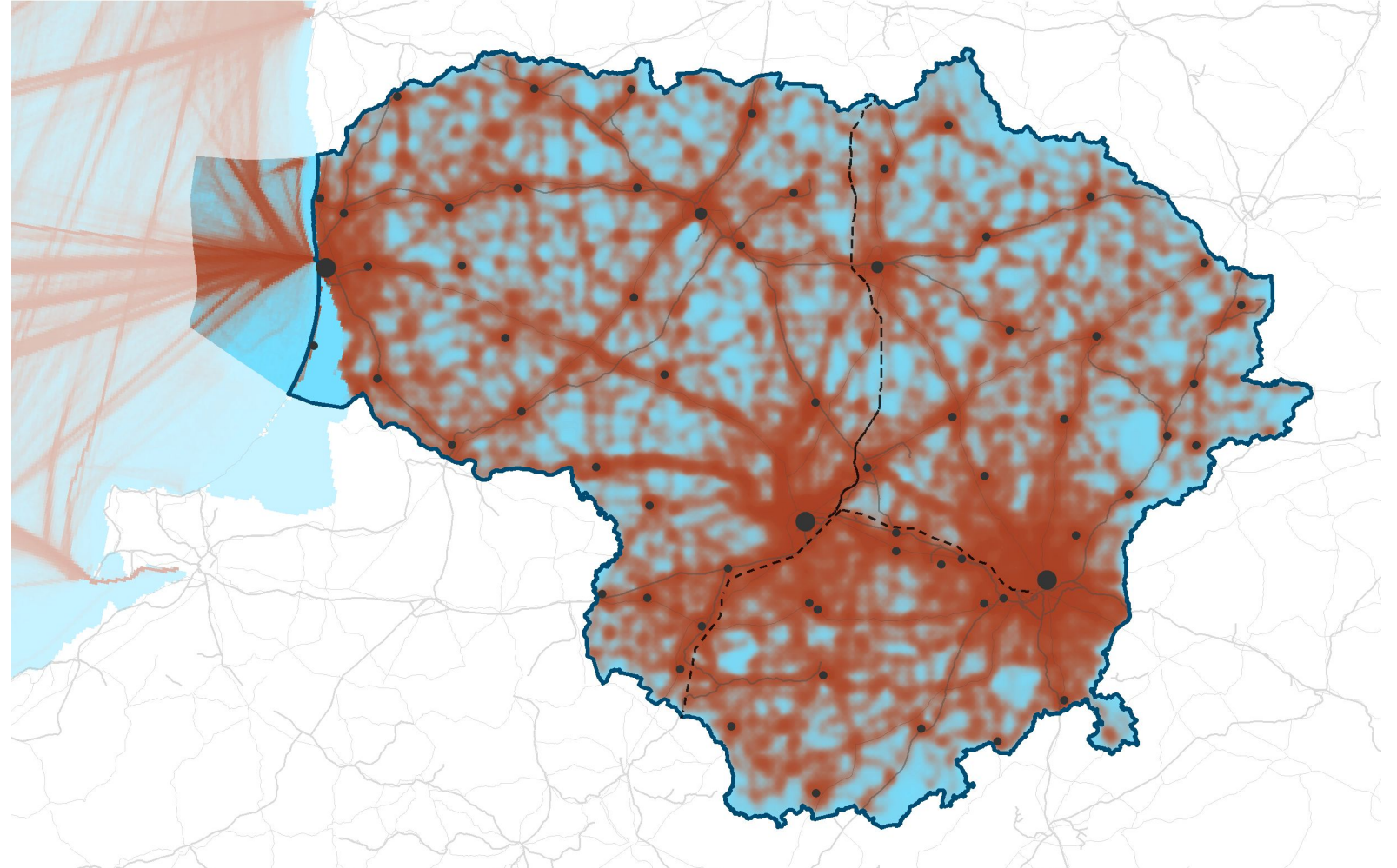
Std. dev.n=0,01



Std. dev. n=0,7



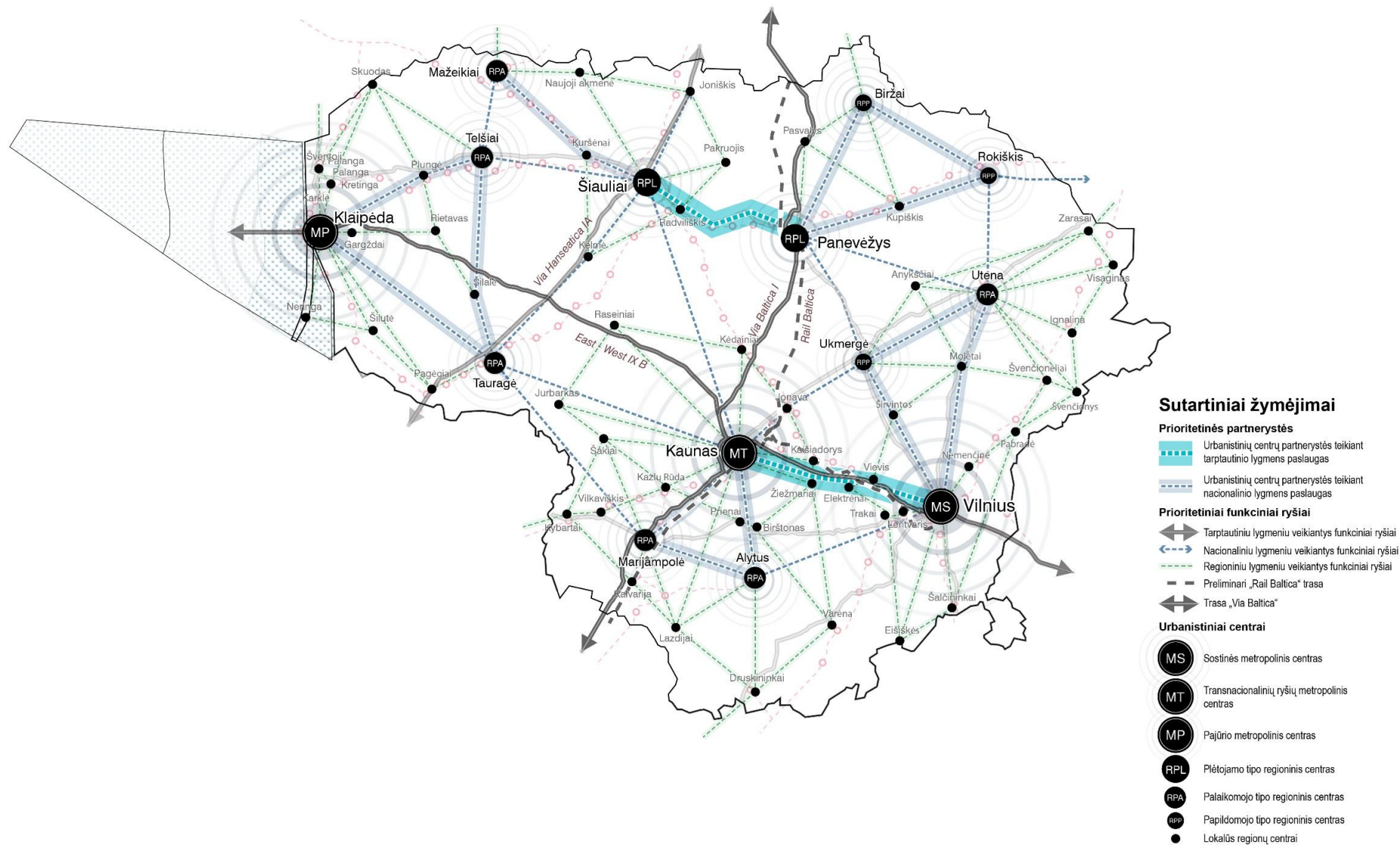
Histogram



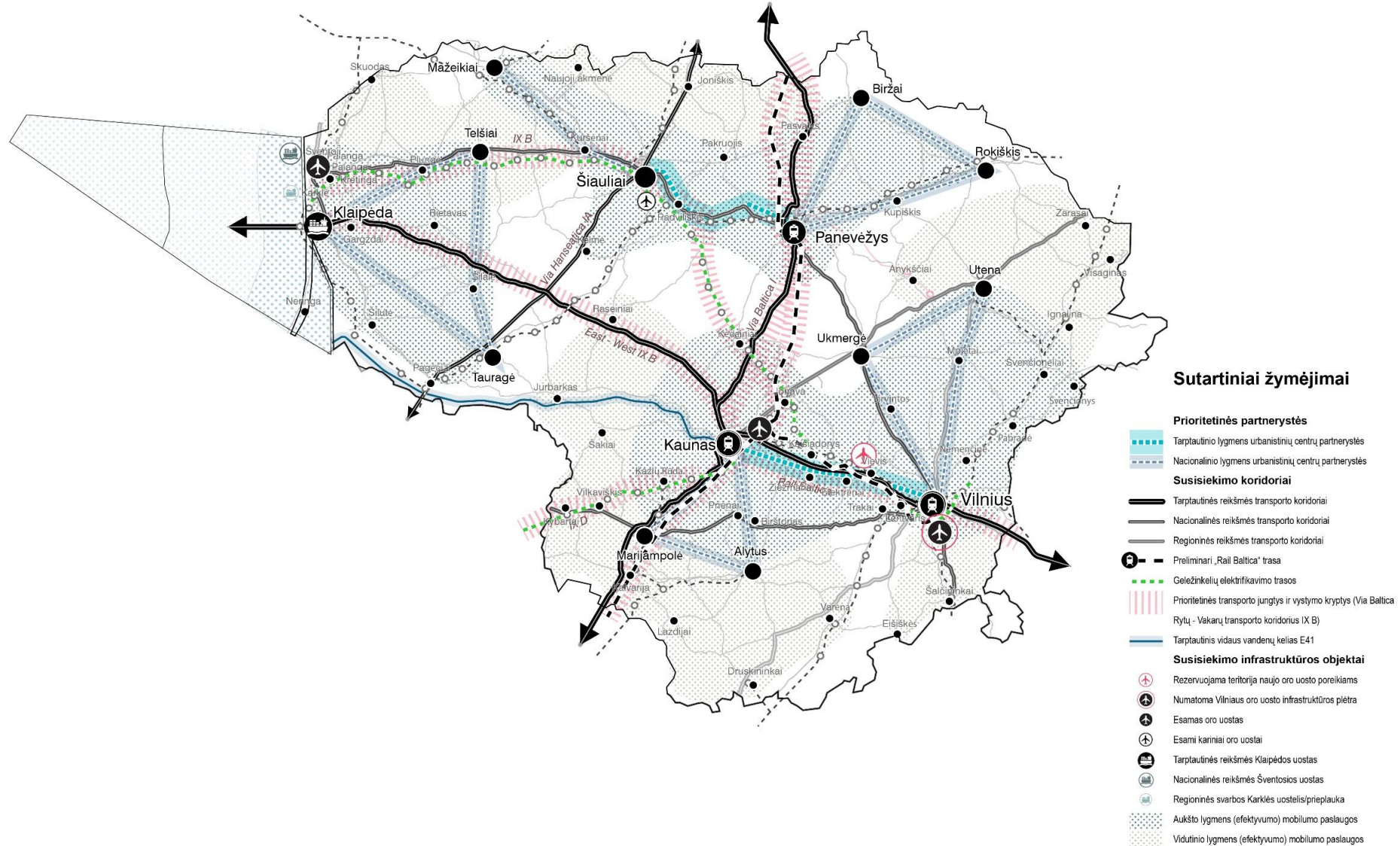
# CPRTL spatial systems



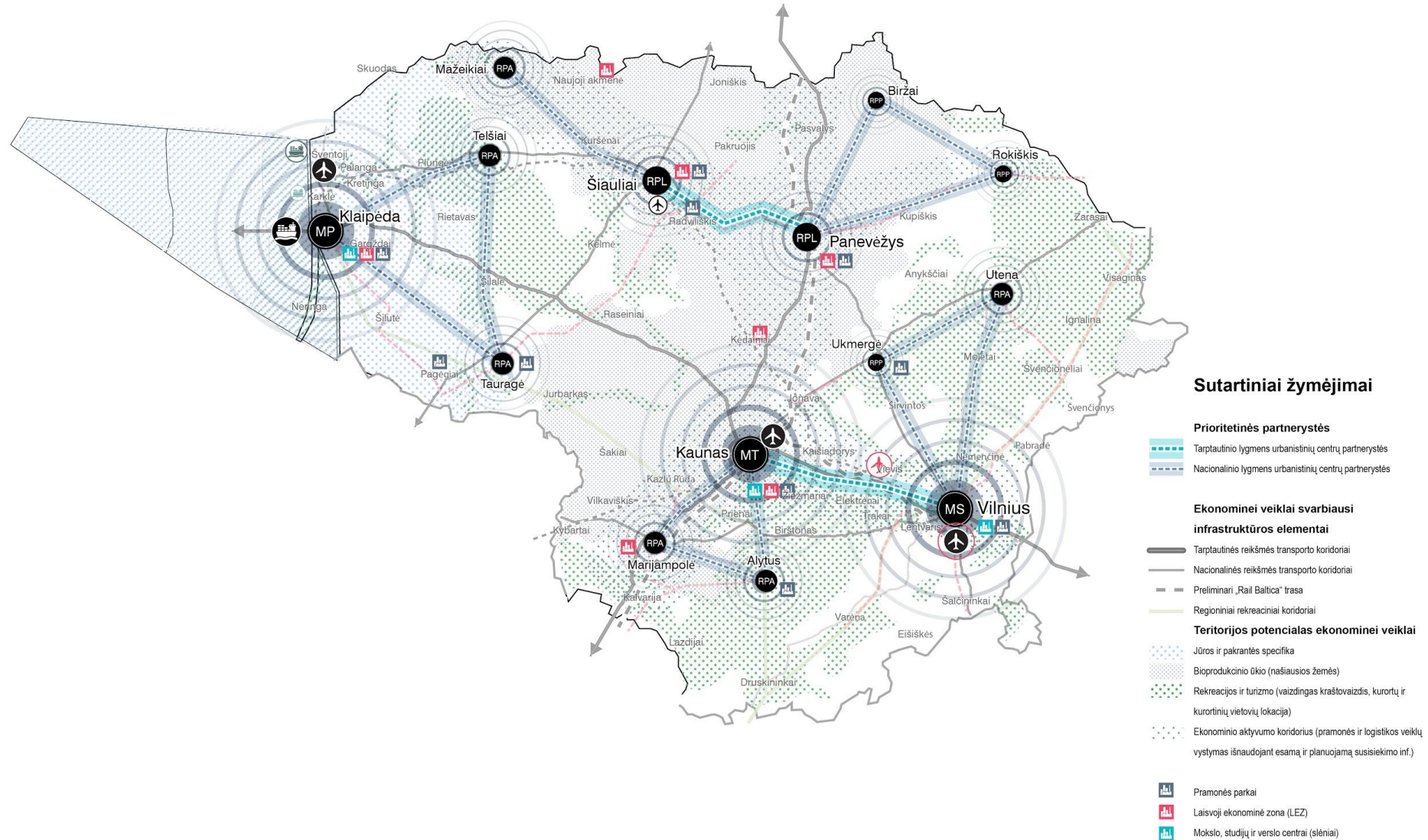
# Urban system 2030



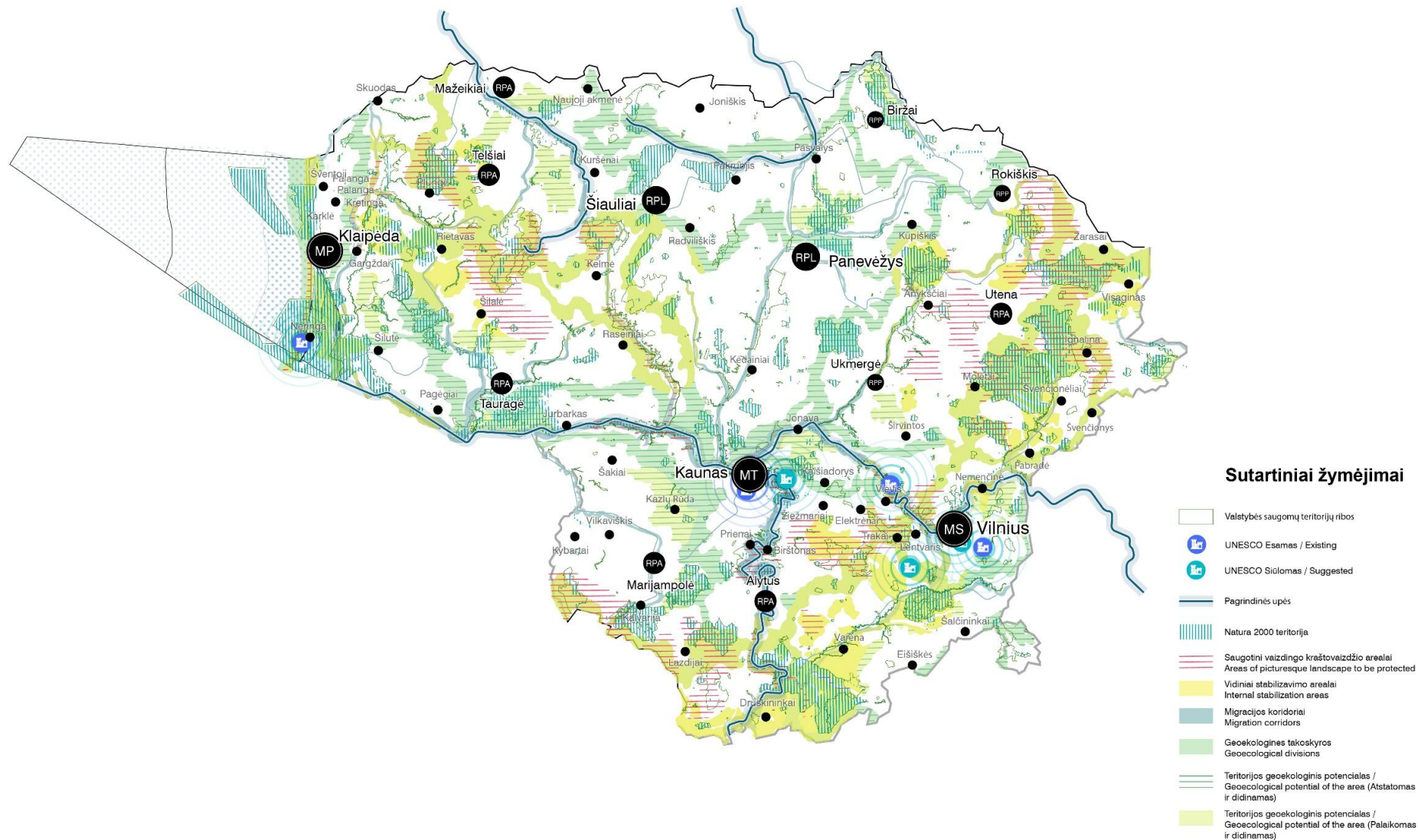
# Transport and mobility system 2030



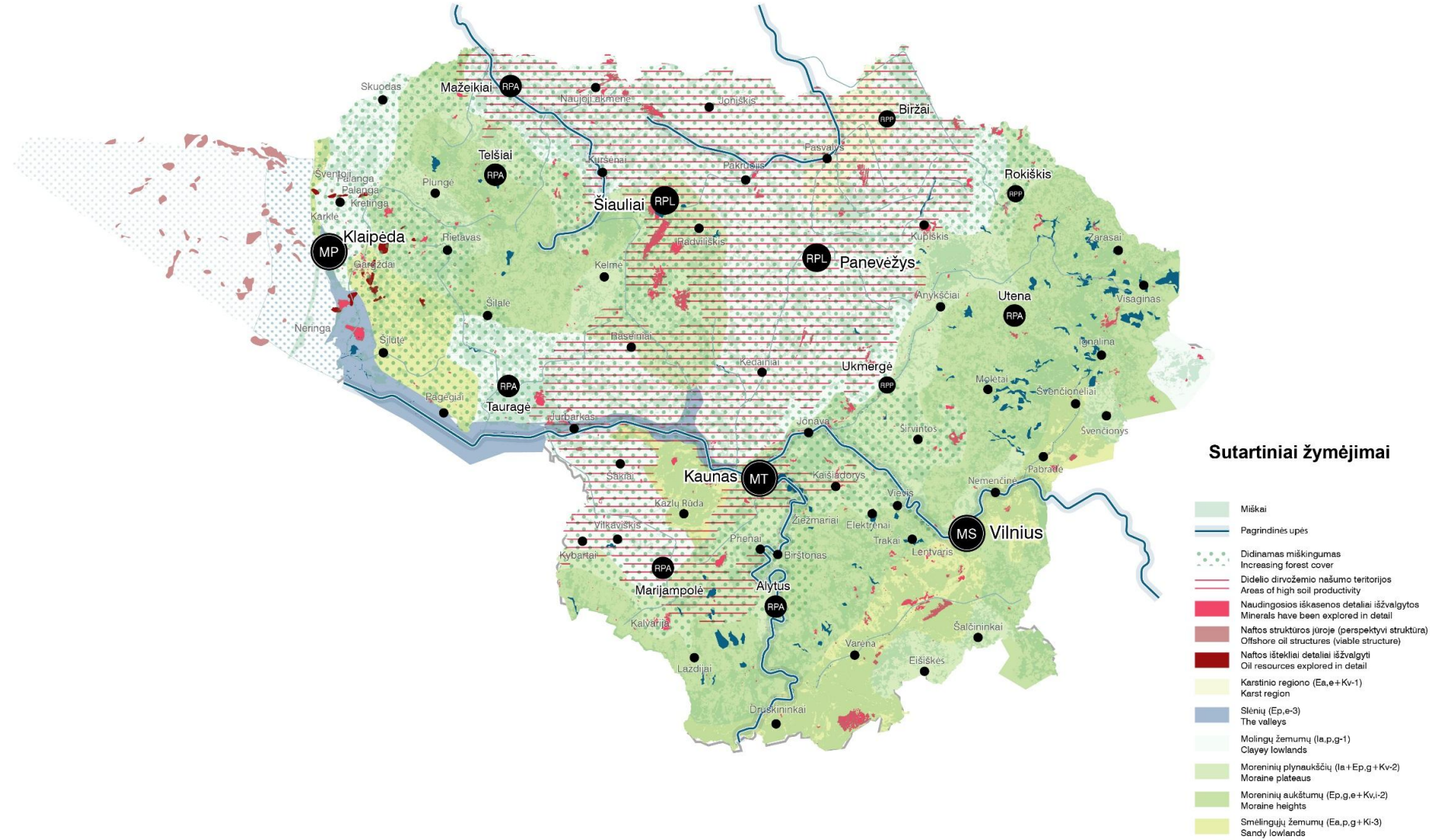
# Economic system 2030



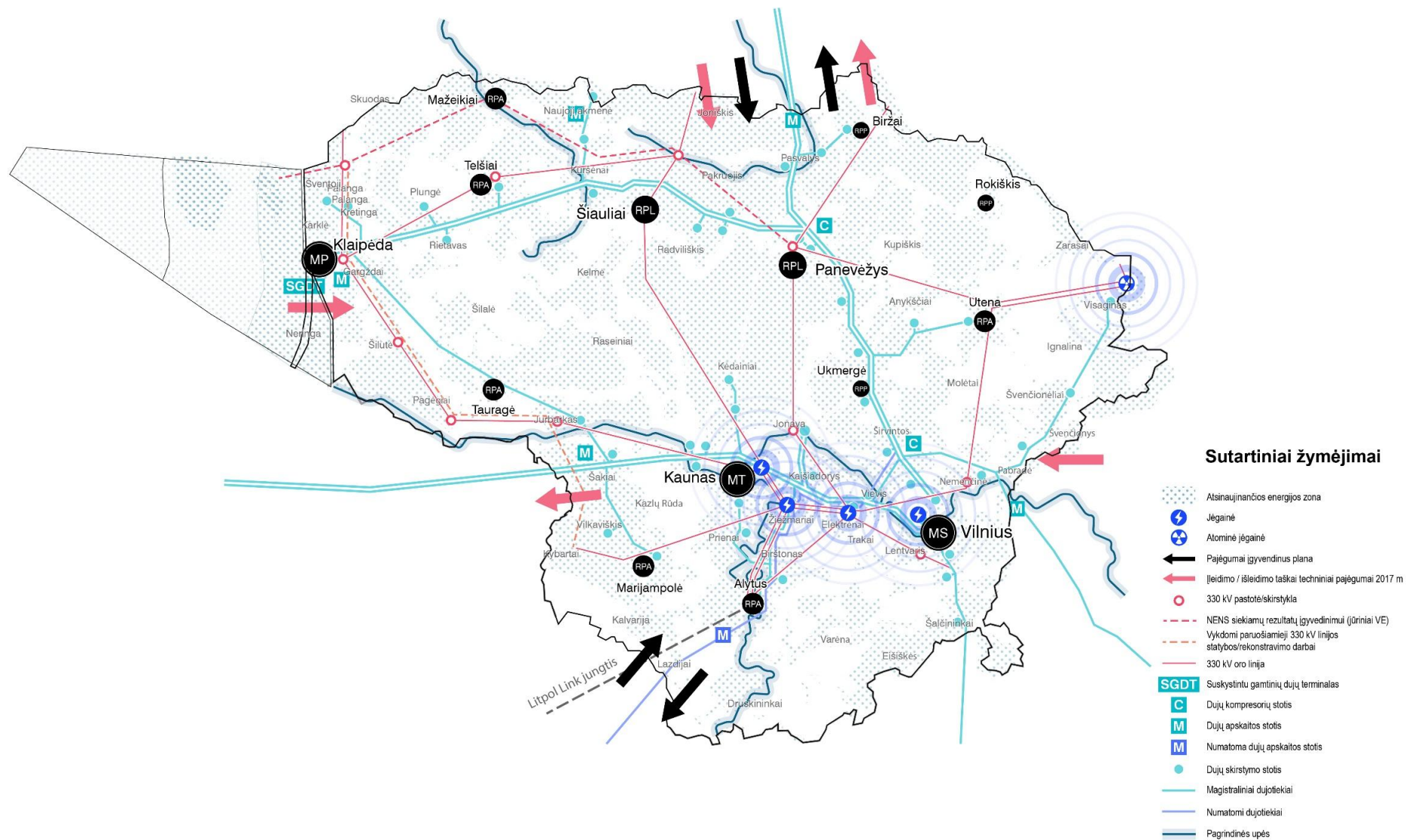
# Landscape and ecosystem 2030



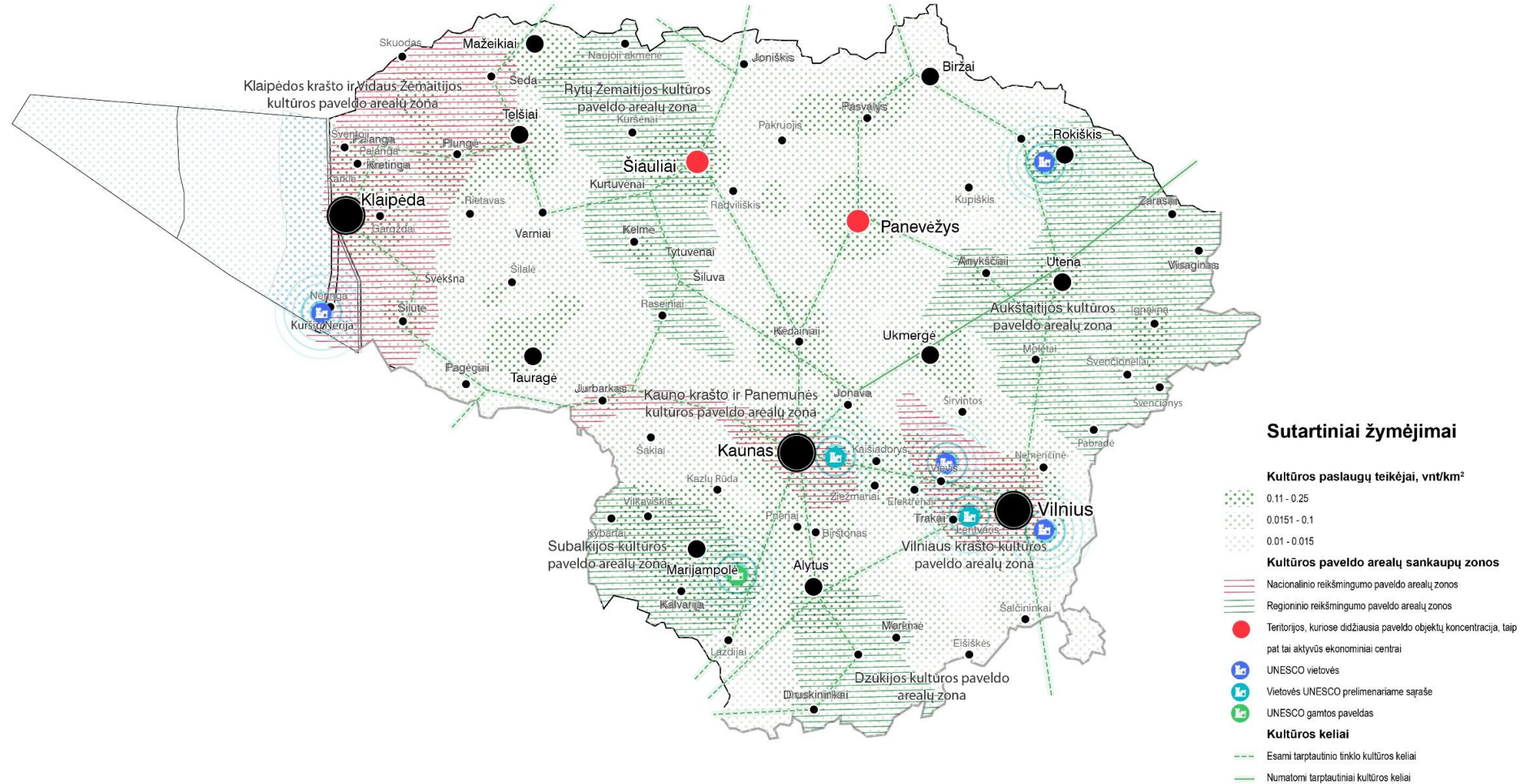
# System of resources 2030



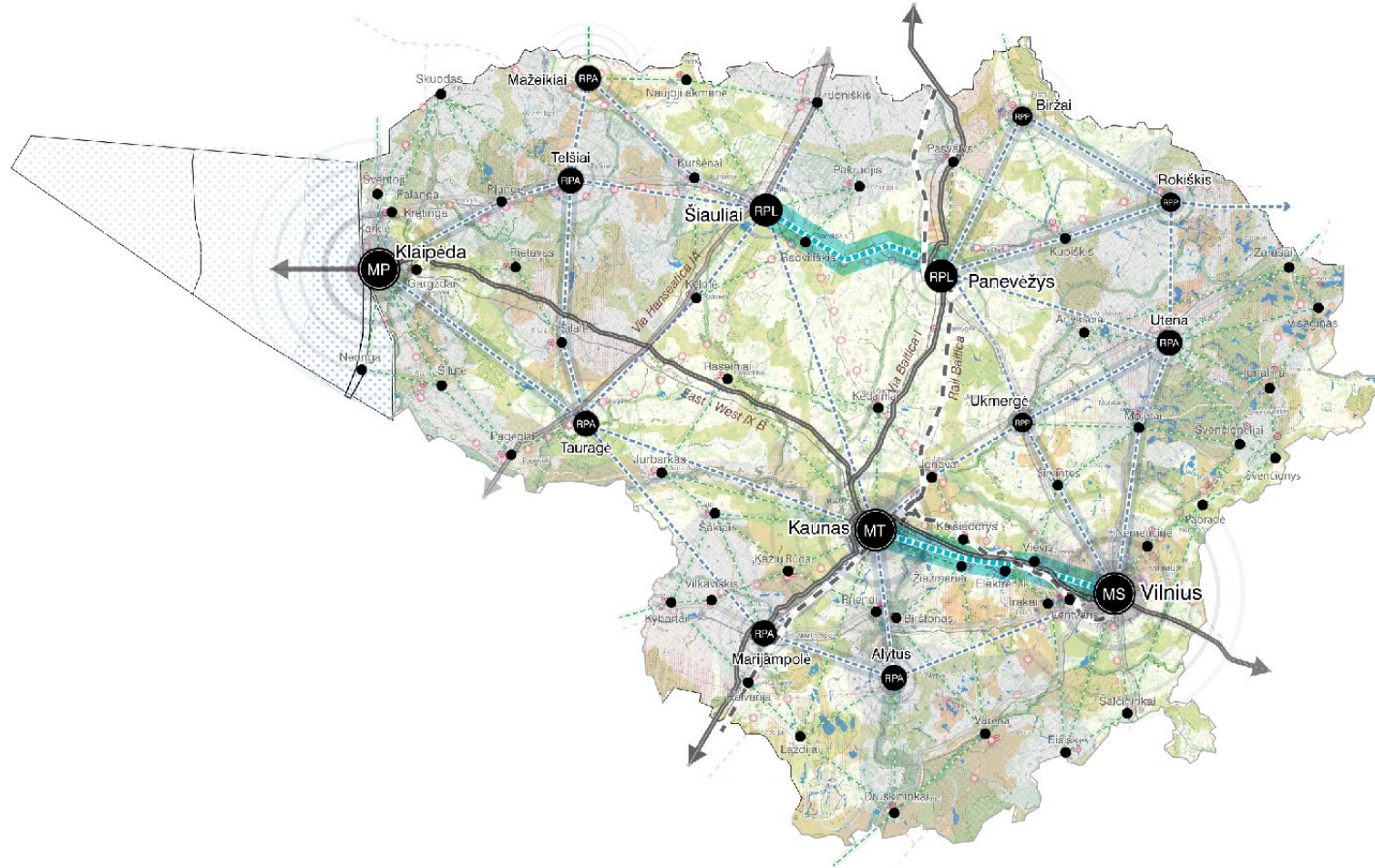
# Engineering systems 2030



# System of cultural services and heritage 2030





# Spatial systems 2030 (Synthesis)








## Sutartiniai žymėjimai








### Prioritetinės partnerystės

-  Urbanistinių centrų partnerystės teikiant tarptautinio lygmens paslaugas
-  Urbanistinių centrų partnerystės teikiant nacionalinio lygmens paslaugas

### Prioritetiniai funkciniai ryšiai

-  Tarptautiniu lygmeniu veikiantys funkciniai ryšiai
-  Nacionaliniu lygmeniu veikiantys funkciniai ryšiai
-  Regioniniu lygmeniu veikiantys funkciniai ryšiai
-  Preliminari „Rail Baltica“ trasa
-  Trasa „Via Baltica“

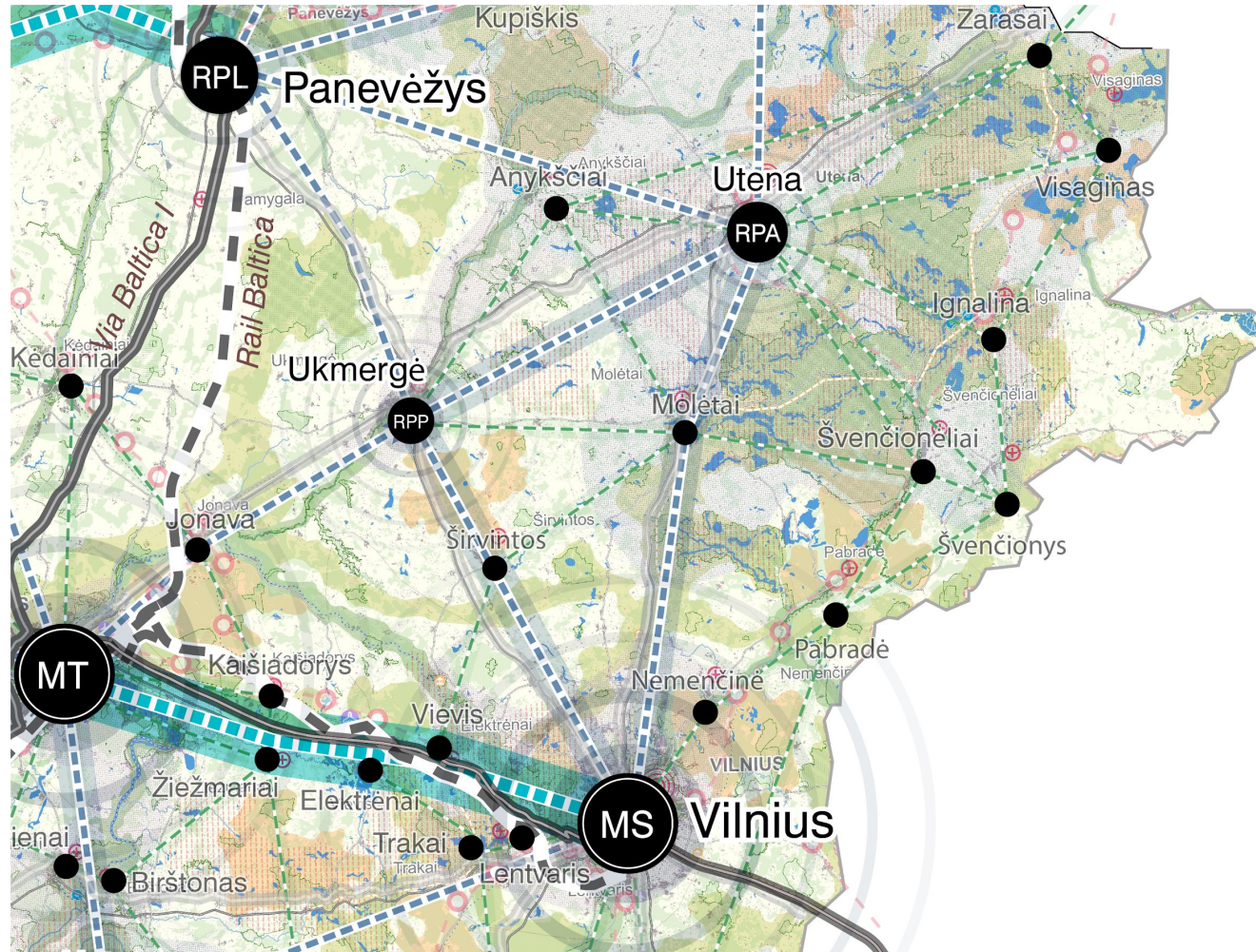
### Urbanistiniai centrai

-  MS Sostinės metropolinis centras
-  MT Transnacionalinių ryšių metropolinis centras
-  MP Pajūrio metropolinis centras
-  RPL Plėtojamo tipo regioninis centras
-  RPA Palaikomojo tipo regioninis centras
-  RPP Papildomojo tipo regioninis centras
-  ● Lokalūs regionų centrai

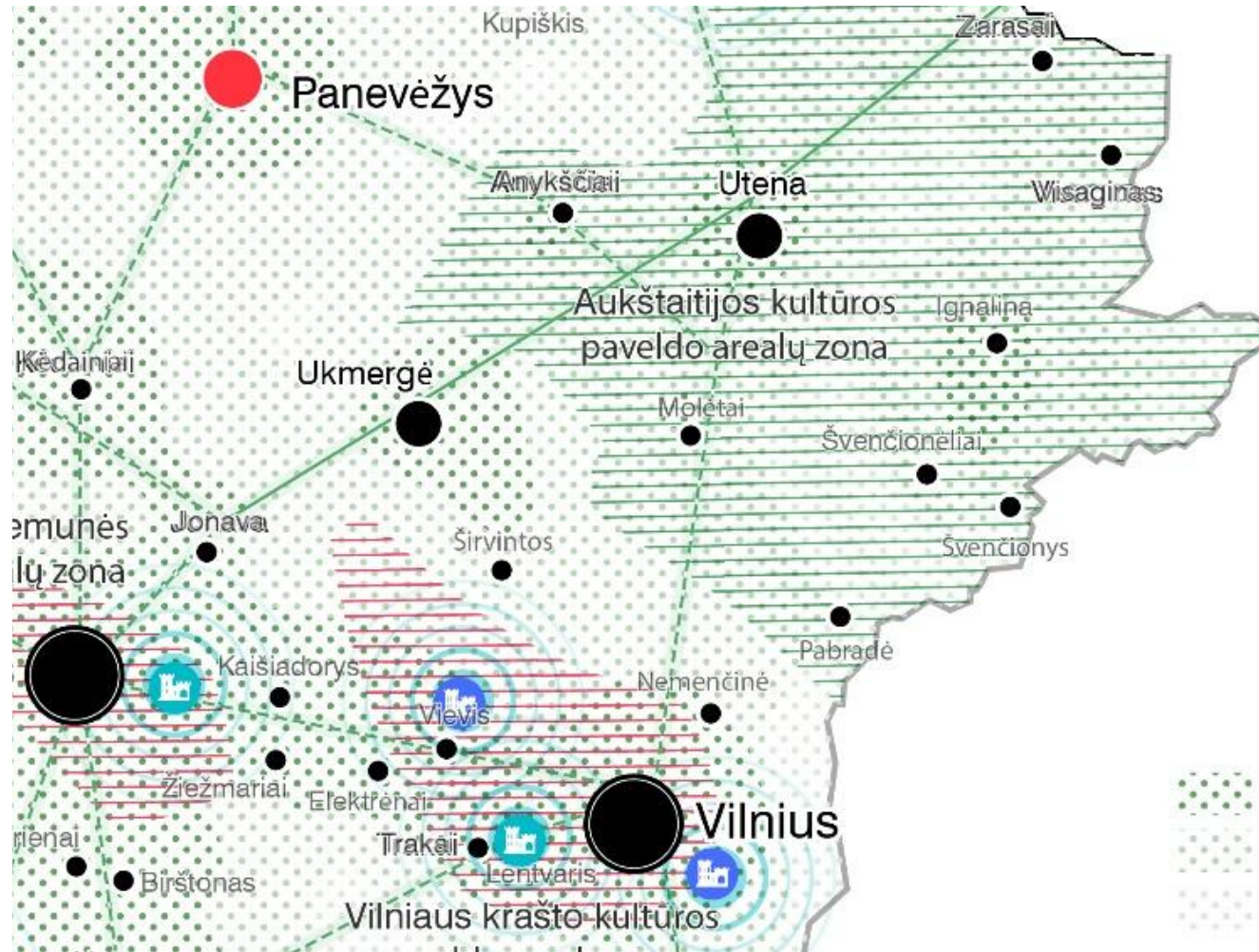


**How can Compass 2030 help bring more clarity and argumentation into the making of spatial decisions and planning choices?**

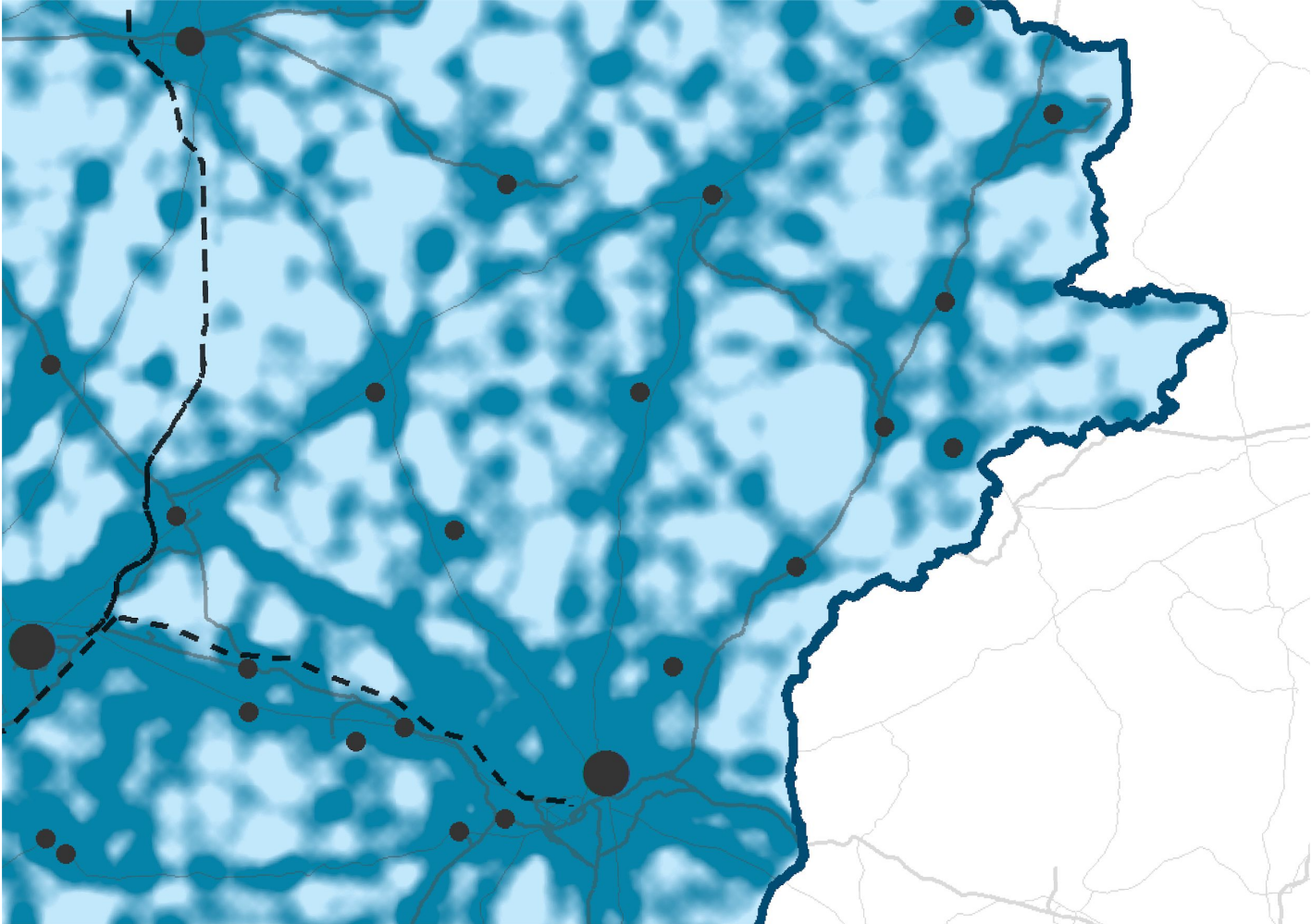
# Vilnius–Utena–Ukmergė – priority is given to partnerships that facilitate the provision of mobility, development of services, recreation and tourism



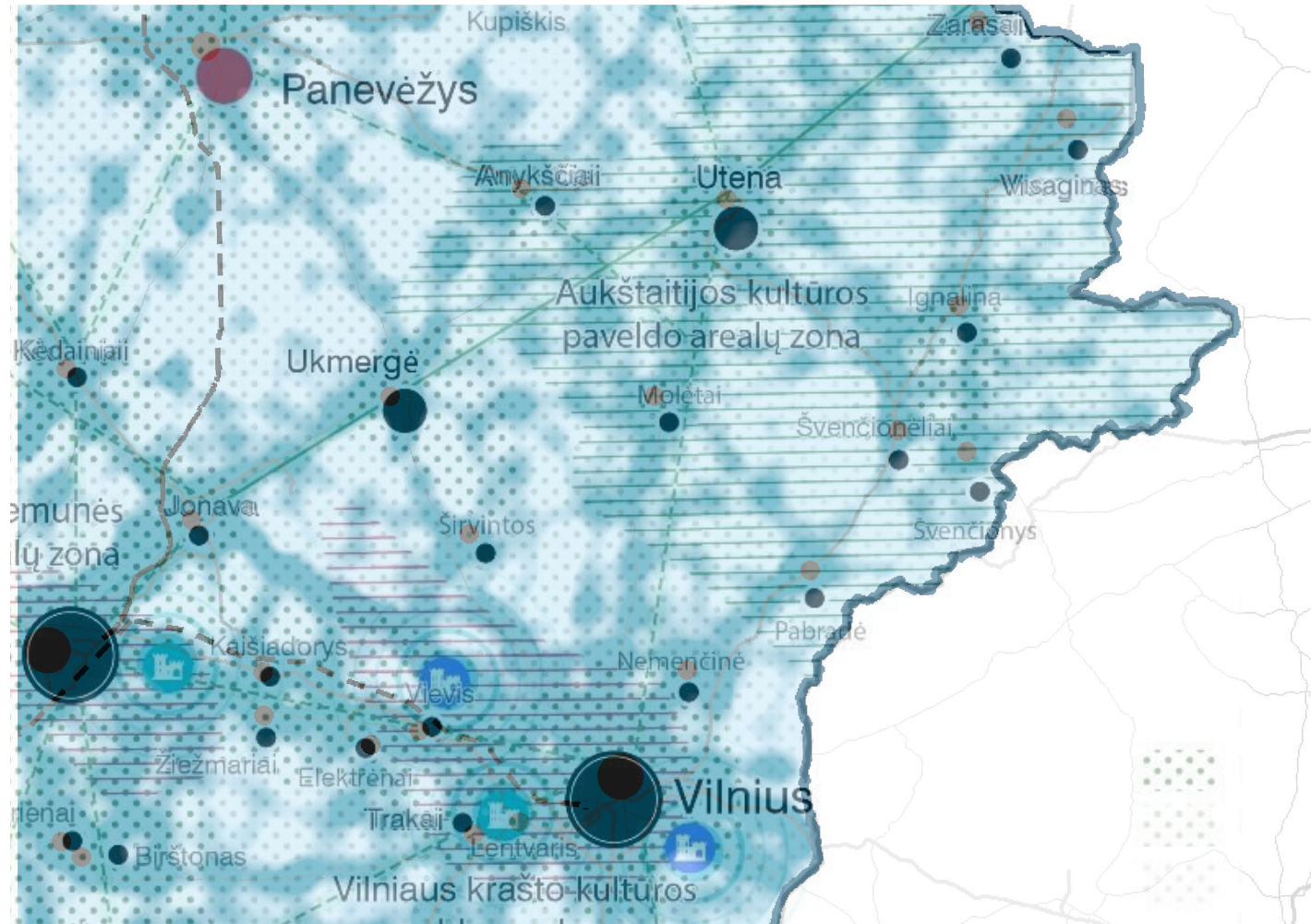
# Vilnius–Utena–Ukmergė. Compass 2030: Sociocultural and socioeconomic capital



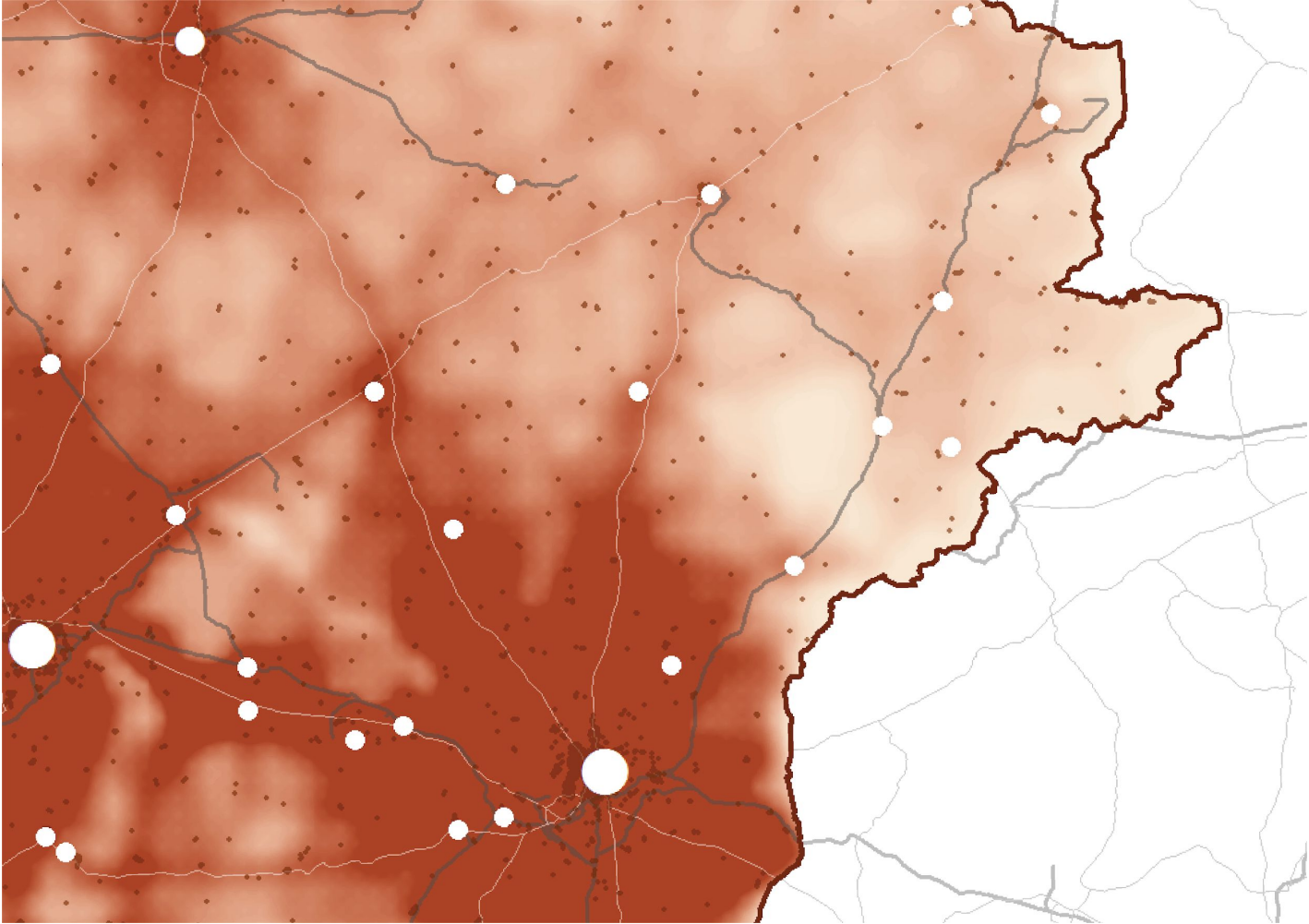
# Vilnius–Utena–Ukmergė. Compass 2030: Access and mobility



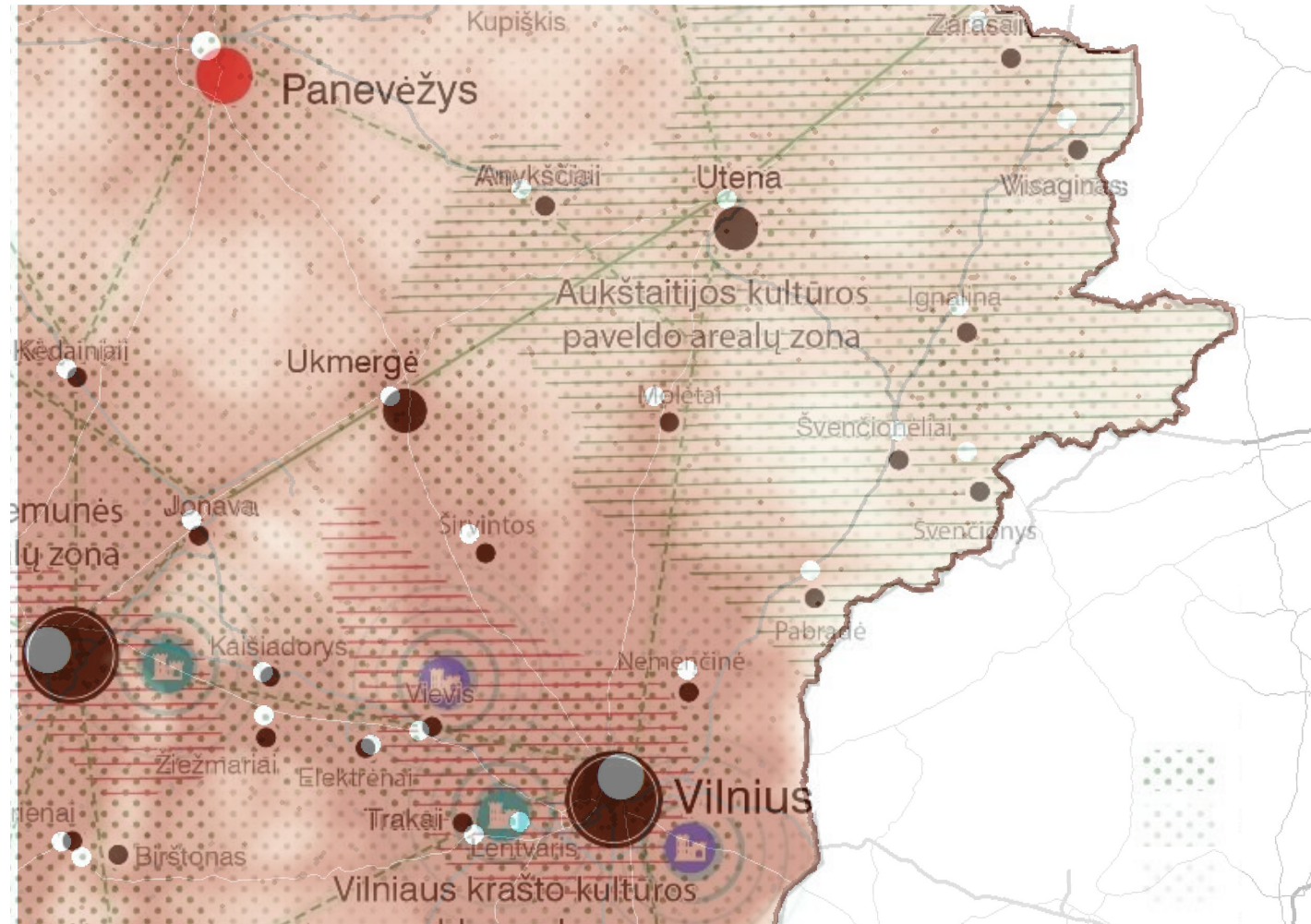
# Vilnius–Utena–Ukmergė. Compass 2030: Access and mobility + Sociocultural and socioeconomic capital



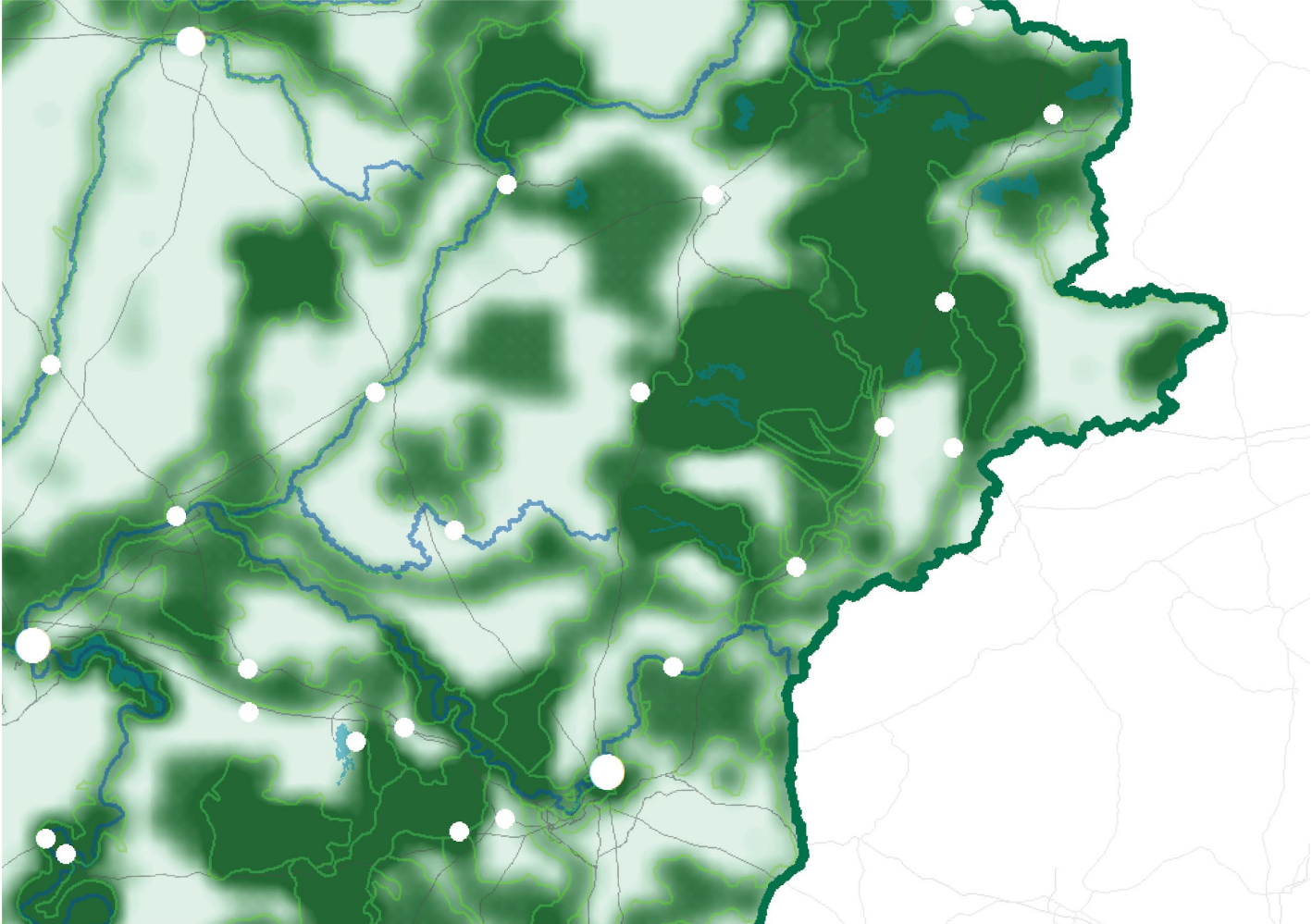
# Vilnius–Utena–Ukmergė. Compass 2030: Sociocultural and socioeconomic capital



# Vilnius–Utena–Ukmergė. Compass 2030: Sociocultural and socioeconomic capital + sociocultural and socioeconomic capital systems

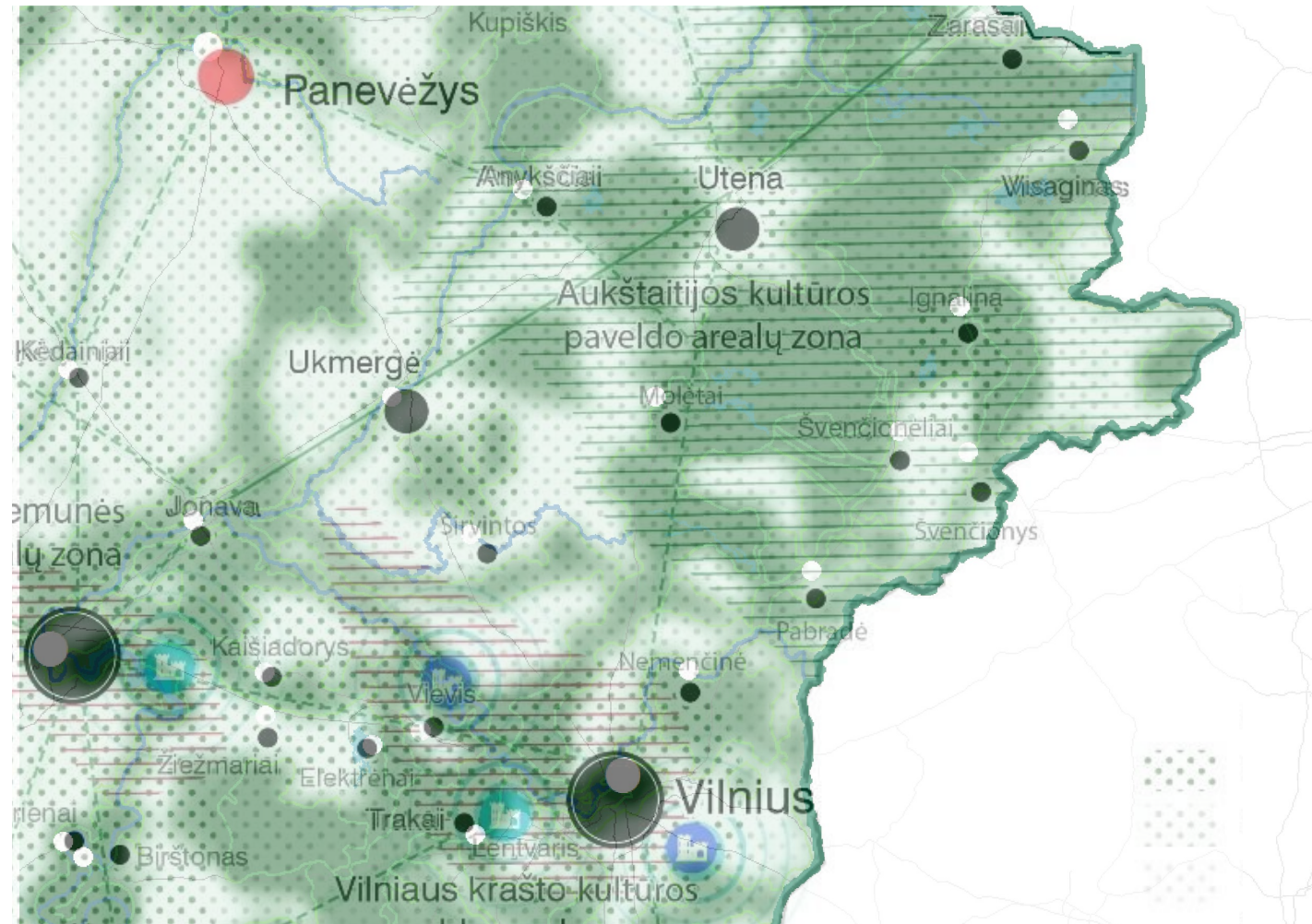


# Vilnius–Utena–Ukmergė. Compass 2030: mobility infrastructure

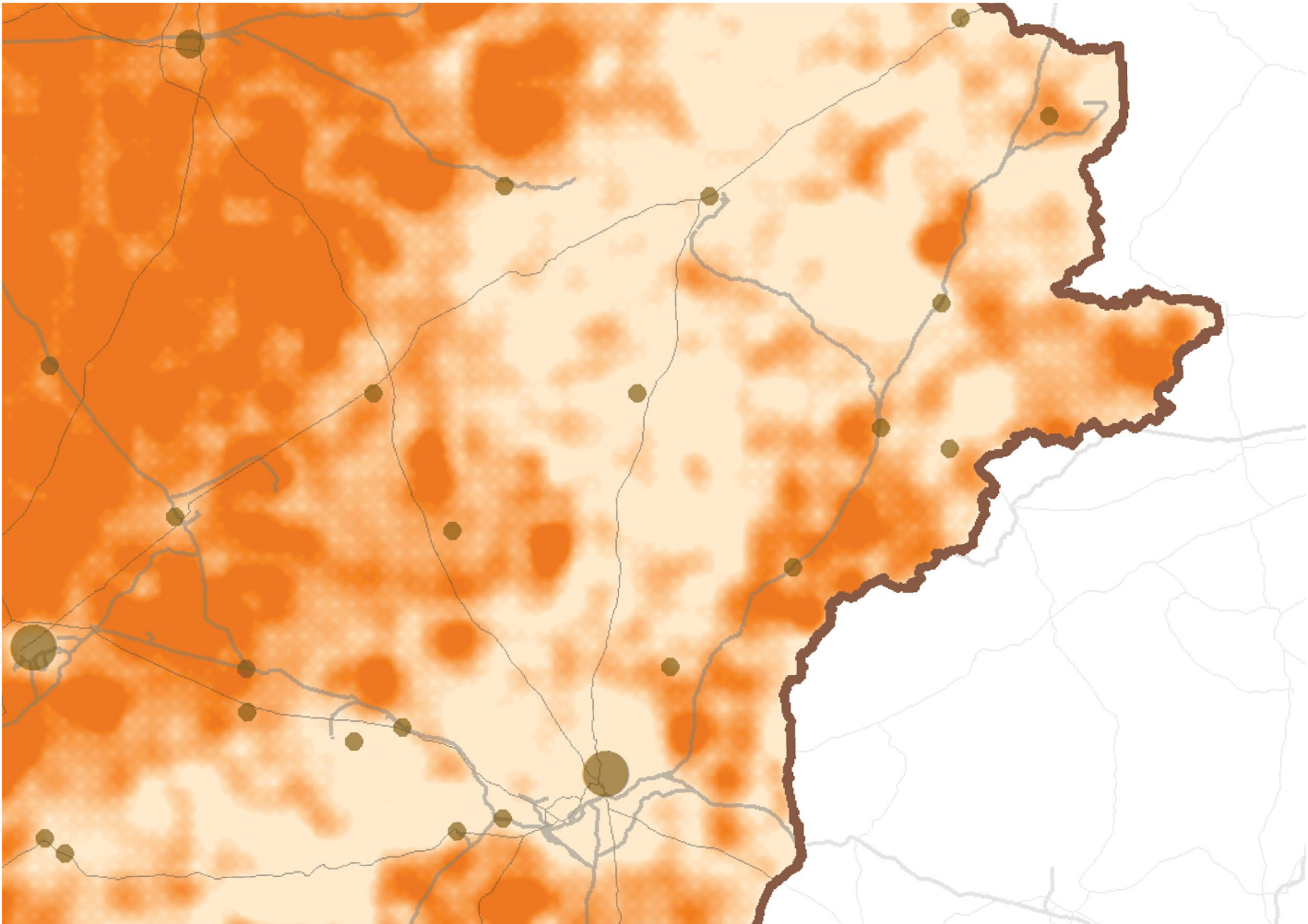




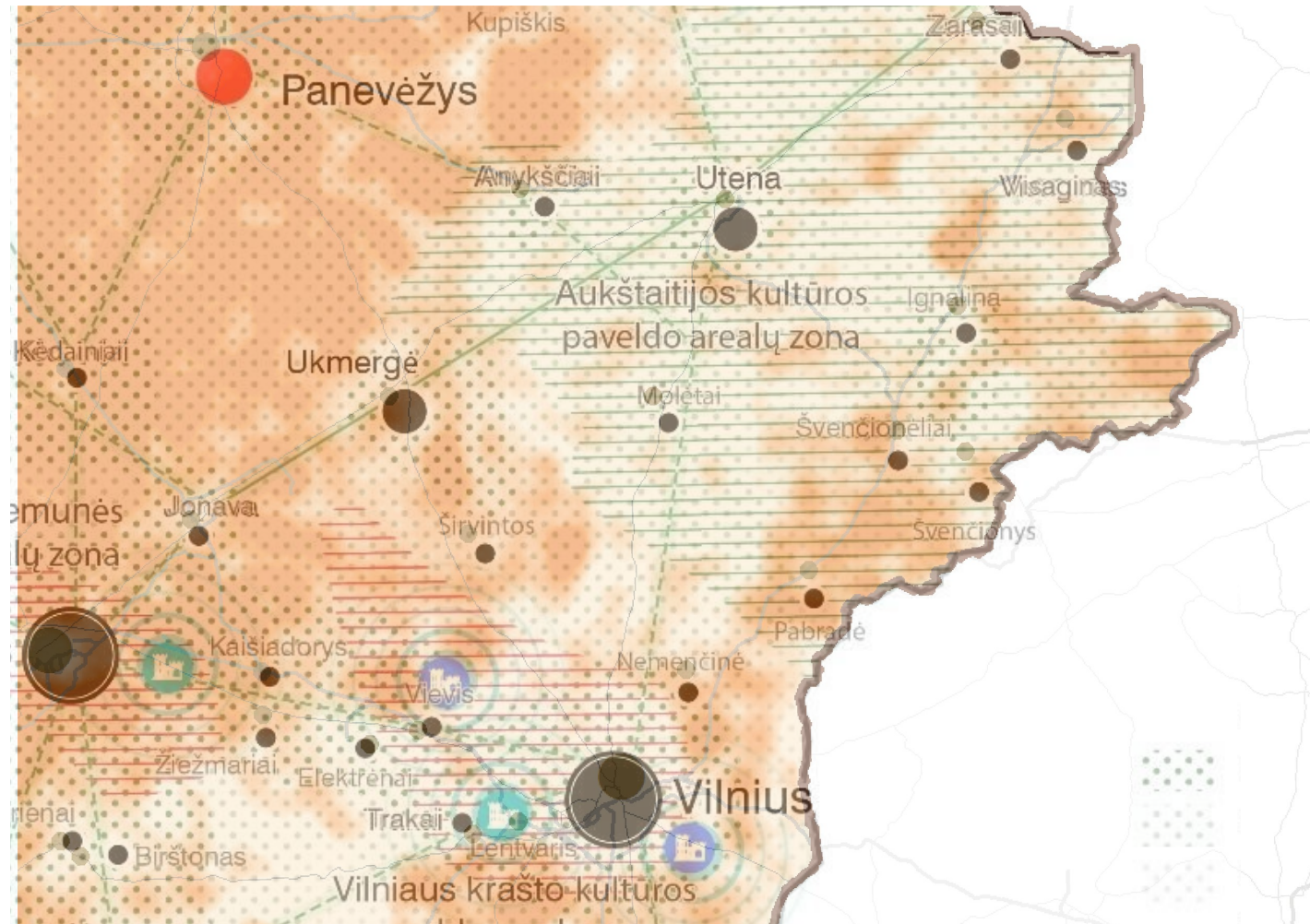
# Vilnius–Utena–Ukmergė. Compass 2030: mobility infrastructure + Sociocultural and socioeconomic capital



# Vilnius–Utena–Ukmergė. Compass 2030: Use of resources



# Vilnius–Utena–Ukmergė. Compass 2030: Use of resources + Sociocultural and socioeconomic capital



**Currently CPRTL compass 2030 is being used as an advisory instrument for decision making, however its flexibility and comprehensive nature leaves a lot of room for perfection, adaptations and further development.**



**LIETUVA 2030**  
bendrasis planas

# COMPASS 2030

Comprehensive Plan of the Territory of the Republic of Lithuania”

VASAB CSPD/BSR webinar on sharing the knowledge

Martynas Marozas [martynas@mmap.lt](mailto:martynas@mmap.lt) +370 610 40748

