



MINISTRY
OF INFRASTRUCTURE

Work with MSP input data in Poland

Baltic Sea Region
MSP Data Expert Sub-Group
15th meeting



Regulation on required scope of MSP in polish marine waters

(Dz.U. z 2017 r. poz. 1025)

describes the required scope of spatial plans for internal marine waters, territorial sea and EEZ in regard to text and graphical parts of the plan, also prepared in the form of database, requirements for used source materials, scales of the plans, used cartographic signs, naming standards and the method of documenting the planning work.

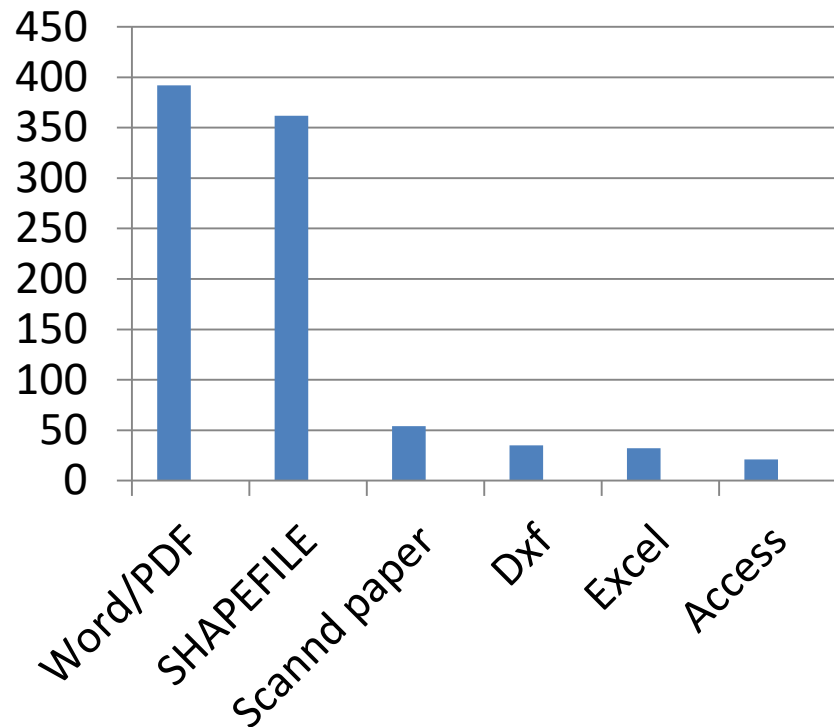
Determination of the main function (priorities) for the purposes of:

- a) artificial islands and structures,
- b) transport,
- c) technical infrastructure,
- d) environmental and nature protection,
- e) cultural heritage,
- f) fisheries,
- g) aquaculture,
- h) obtaining renewable energy,
- i) exploration, recognition of mineral deposits and extraction of minerals from deposits,
- j) tourism, sport and recreation,
- k) state defense and security,
- l) other than those mentioned in point a-k, depending on the needs of the plan;

OVER 30 DIFFERENT INSTITUTIONS

GIOŚ
MIR
PIG-PIB
GDOŚ
CMR
IMGW-PIB
BHMW
KZGW
CMM
CODGIK/GUGIK
SMIOUG
Dowództwo Sił Powietrznych
MŚ
MIiR
UW Zachodnio-pomorski; UW Pomorski; UW Warmińsko-mazurskie
WIOŚ Zachodnio-pomorski; WIOŚ Pomorskie; WIOŚ Warmińsko-mazurskie
Woliński Park Narodowy; Słowiński Park Narodowy
IM
IO PAN
GIS
MRiRW
RZGW Gdańsk; RZGW Szczecin
UM Gdynia; UM Słupsk; UM Szczecin

Received data



2016:

All requests for data were made by official letter, signed by minister responsible for maritime economy.

In most cases data came as an attachment to response letter (on CD, DVD, Hard drive, e-mail).

In some cases response letter informed where requested data should be found (usually on the website of relevant authority).

In few cases response letter informed how to request for those data in a proper way (for example by filling special form).

In no case datasets were collected via web services like WFS.

Sector	GIS data	Descriptive data
<i>Administrative boundaries/ other boundries</i>	<i>Coordinates of internal marine waters, territorial sea, eez, coastal municipalities, voivodeships</i>	<i>international agreements on the establishment of the EEZ boundaries</i>
<i>Bathymetry/geology</i>	<i>Electronic Navigation Charts (ENC), BSHC Baltic Sea Bathymetry Databse (supplementary), Depth Contours (Helcom, supplementary) Seabed lithology</i>	<i>Description of ENC names and symbols,</i>

Sector	GIS data	Descriptive data
<p><i>Current use of waters/ Infrastructure</i></p>	<p><i>ENC, Planned location of offshore wind farms, Planned and existing location of pipelines, cables Main shipping routes +intensity, Ports areas, sea harbors areas Lanterns, Beach entrances, Coast mileage, Potential areas for CO2 storage, Coastal defence structures,</i></p>	<p><i>All materials have coordinates – need to transform to GIS form: Linear infrastructure, Offshore wind farms, Dredging sites, Dredged material disposal sites, Water sports, Fairways, Harbors and marinas, Swimming areas, Bridges, piers, Planned investments , Infrastructure for fishery, Maricultures,</i></p>

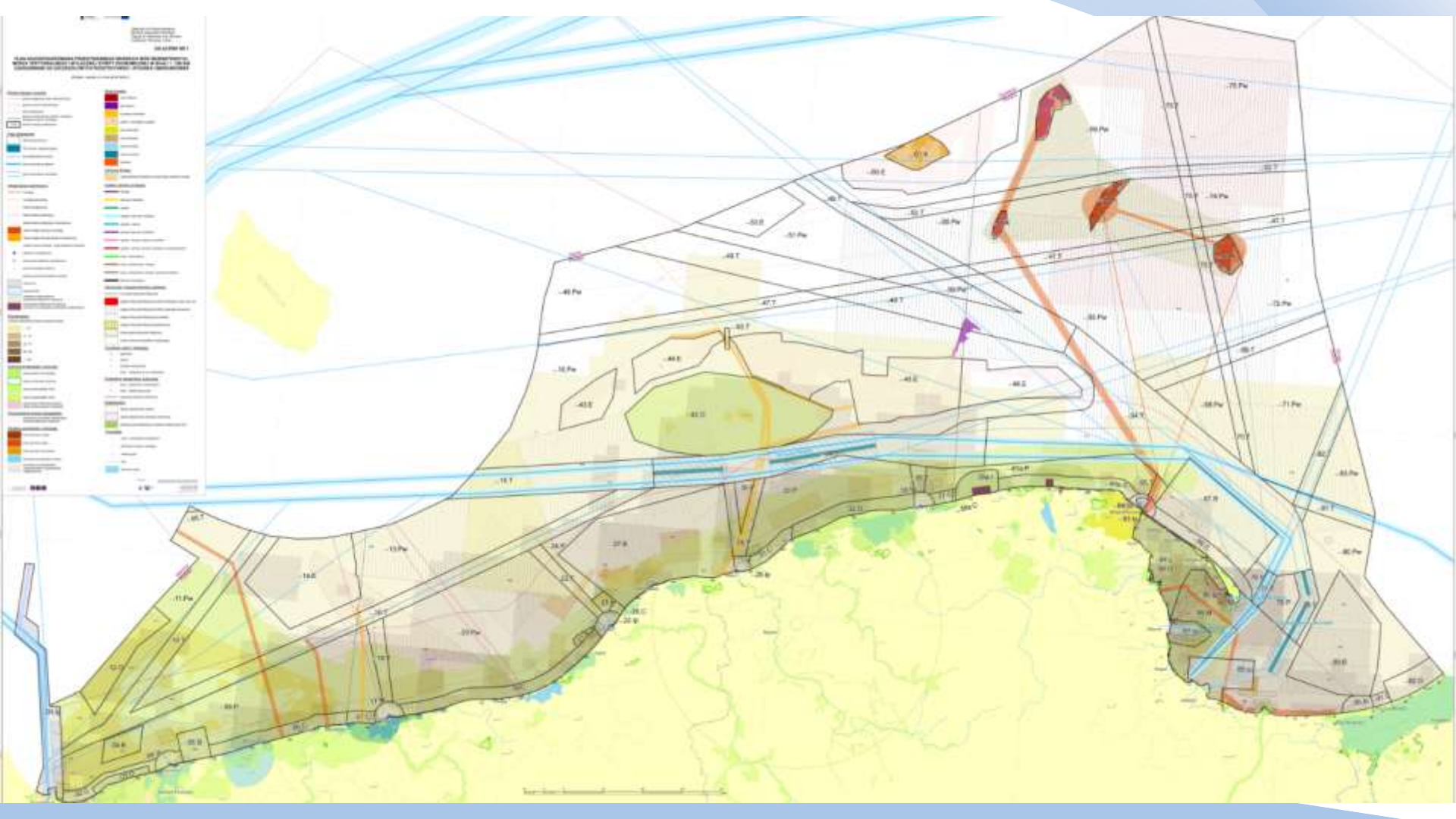
Sector	GIS data	Descriptive data
Environmental protection	<i>Coordinates of forms of nature protection, Database for preliminary assessment of the environmental status of marine waters</i>	<i>Stocktaking of Natura 2000 areas, Plans for management of Natura 2000 areas, nature reserves, national parks, Stocktaking of national forests,</i>
Pollutions		<i>National Environmental Monitoring , CHEMSEA</i>

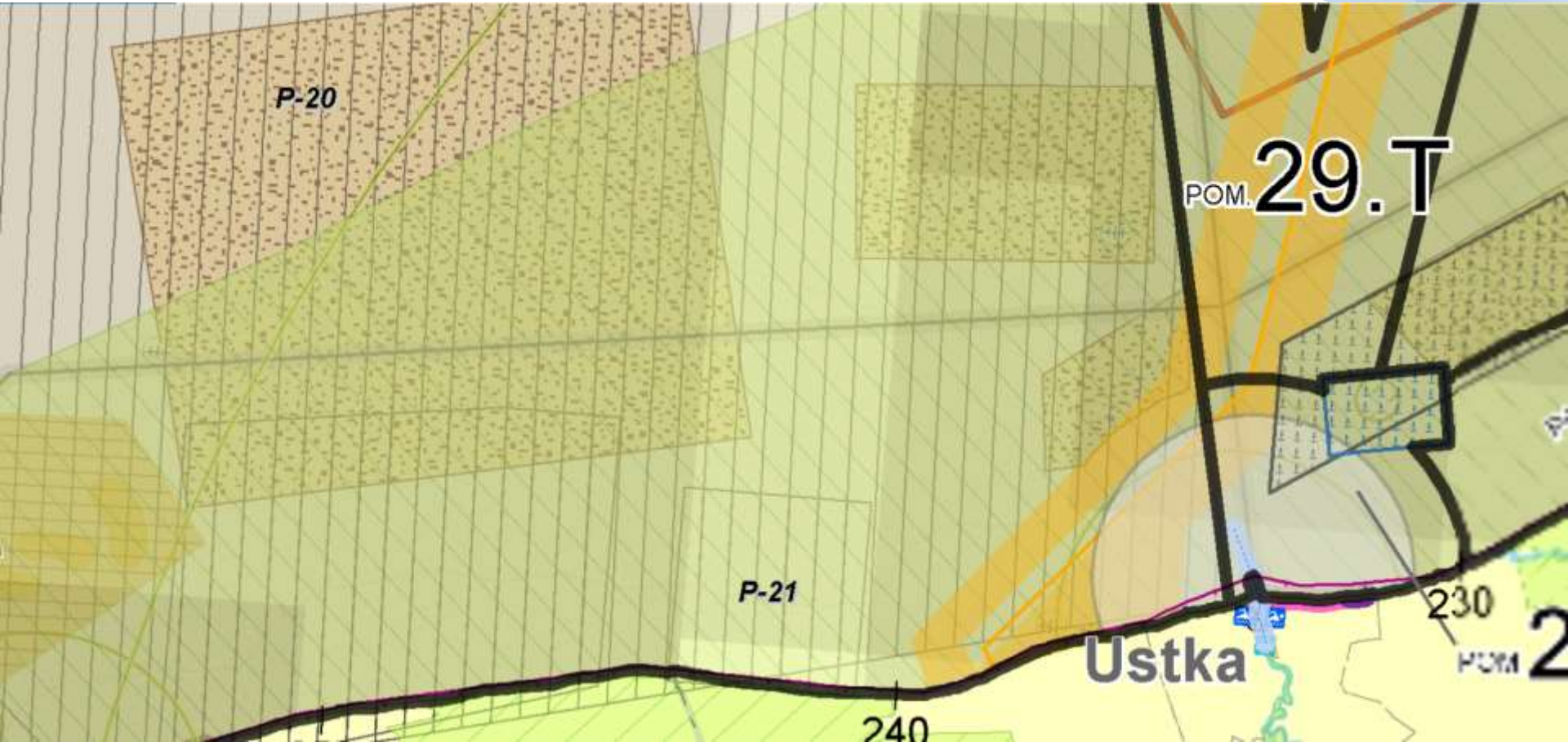
Sector	GIS data	Descriptive data
<p><i>Fisheries/ Biological data</i></p>	<p><i>Modelled Seabed Habitats in the Baltic Sea (EUSEAMAP), ICES Baltic Rectangles Map,</i></p>	<p><i>Biological data from Chief Inspectorate of Environmental Protection, IO PAN, MIR, Seabed habitats (EUSEAMAP), E-atlas of seabed habitats for polish marine areas + maps, Data from Polish Fisheries Monitoring Centre, Data from Sea Fisheries Institute, Maricultures,</i></p>

Sector	GIS data	Descriptive data
<p><i>Flood risk areas/ hydrography</i></p>	<p><i>Flood risk areas (borders), Hydrographic map, Coastal defense structures, Coastline monitoring</i></p>	<p><i>Report- adaptation for climate change to year 2020 (with a view to 2030), Report - climatic and oceanographic condition in Poland and in south Baltic Sea, Coastline monitoring</i></p>

Sector	GIS data	Descriptive data
<i>Oceanographical/ Meteorological data</i>		<i>National Environmental Monitoring (for example: temp, salinity, oxygen saturation), COMBINE database data, Maritime Institute in Gdańsk data,</i>
<i>Mining resources/ Natural resources</i>	<i>Mineral deposits, Mineral deposits - prospective areas, Mining areas,</i>	<i>Summary of mineral deposits, Concessions for exploring (borders), Concessions for exploiting (borders) ,</i>

Sector	GIS data	Descriptive data
<i>Special/ temporary closed areas</i>	<i>Anchorage of Polish Navy, Navy training areas, Navy waterways</i>	<i>Areas excluded from fishing, Airforce: areas of 'low flights',</i>
<i>Underwater cultural heritage</i>	<i>Wrecks, Archaeological shipwrecks, Wrecks - graveyard, Underwater cultural landscape, ENC,</i>	<i>Wrecks list, Map of wrecks,</i>





Was there any data which was especially in cross-border context?

No feedback.

Was there anything missing?

No feedback.

In theory, the solution for obtaining those data, for the most of the topcis, is here:

INSPIRE Directive and national SDI infrastructures.

In practice, if we were starting now, we would probably go the same way as for the first version.

Right now, we should talk about input data for updating the plans.



Thank You.

kamil.rybka@mi.gov.pl

