

Towards a revised maritime spatial plan for the German EEZ

DEVELOPMENTS IN A NUTSHELL

*Bettina Käppeler,
Federal Maritime and Hydrographic Agency*

BALTIC 4th
FORUM **MSP**



1-2 JUNE 2021, ONLINE



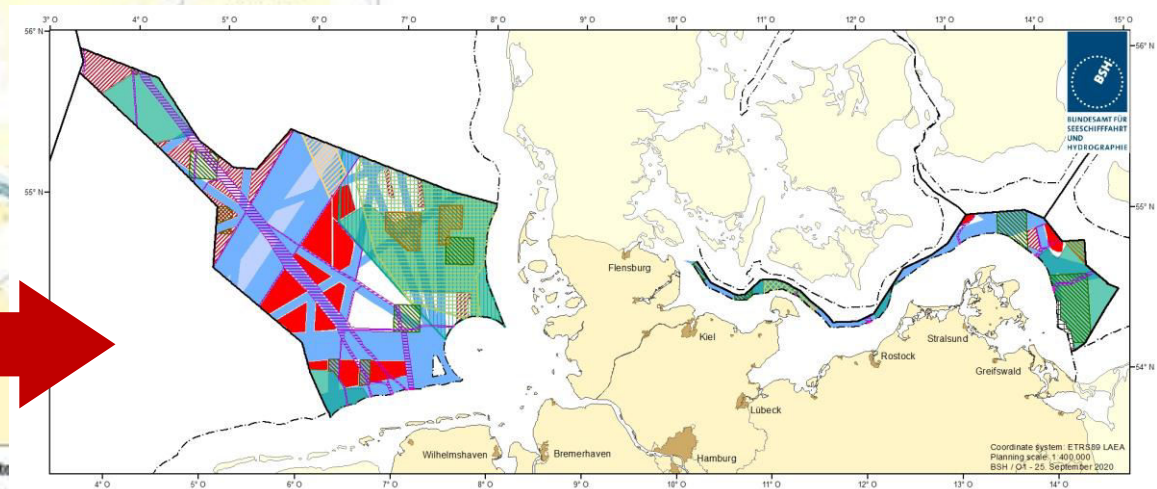
Old plans from 2009 – a lot of change since

Raumordnungspläne für die deutsche AWZ



Raumordnungsplan für die deutsche ausschließliche Wirtschaftszone der Nordsee (21.09.2009) und der Ostsee

- Festlegungen**
- Vorbehaltsgebiet Schifffahrt
 - Vorbehaltsgebiet Schifffahrt
 - Vorbehaltsgebiet Rohrleitungen
 - Vorbehaltsgebiet Rohrleitungen
 - Zellkern
 - Vorbehaltsgebiet Forschung
 - Vorbehaltsgebiet Windenergie
- Nachrichtliche Darstellung**
- Verkehrsbrennungsgebiet
 - Tiefwasserweg
 - Vorsichtsgebiet
 - Reede
 - Ankerplatz
 - Rohstoffgewinnung Sand & Kies - Planfeststellung
 - Rohstoffgewinnung Sand & Kies - Planfeststellungsverfahren
 - Rohstoffgewinnung Sand & Kies - Bewilligung
 - Rohstoffgewinnung Gas - Bewilligung
 - Gasrohrleitung (in Betrieb)
 - Erdschleuchtungen (geplant)
 - Energiekabel (in Betrieb)
 - Energiekabel (geplant)
 - Datenkabel (in Betrieb)
 - Datenkabel (außer Betrieb)
 - Windparks genehmigt
 - Referenzgebiet Windenergie
 - Natura 2000 - FFH-Gebiet
 - Natura 2000 - EU-Vogelgebiet



Draft maritime spatial plan for the German EEZ in the North and Baltic Sea - Map

- Shipping**
- Priority area
 - Temporary priority area (until 2035)
- Offshore wind energy**
- Priority area
 - Reservation area
- Cables and Pipelines**
- Reservation area
 - Gate to the territorial sea
- Raw material extraction**
- Reservation area hydrocarbons
 - Reservation area sand and gravel extraction
- Fishery**
- Reservation area Norwegian lobster
- Scientific research**
- Reservation area
- Protecting and enhancing the marine environment**
- Priority area nature conservation
 - Reservation area divers
 - Reservation area harbour porpoises (May to August)
 - Reservation area bird migration
- For information only**
- Military training area
 - Fehmarn Belt fixed link
- Boundaries**
- Territorial sea
 - Exclusive Economic Zone
 - Northern Approach of the Seaports of Swinemünde (Swinoujście) and Stettin (Szczecin)*
- * This area is not covered by the draft plan because of contradictory legal positions. Due to German opinion this area is part of the German EEZ, whereas in relation to Poland no rights or sovereign powers are exercised. Due to Polish opinion this area is part of the Polish territorial sea.

Revision timetable



What is different in the new plan?

New spatial priorities in response to changing demands (e.g.):

- more area specifically dedicated to offshore wind
- Inclusion of nature conservation as priority and reservation areas

New topics covered

- e.g. underwater cultural heritage, defence

Co-use

- Overlapping priority areas where compatible, e.g. shipping and conservation
- Further co-use options (e.g. with offshore wind) to be explored in coming years

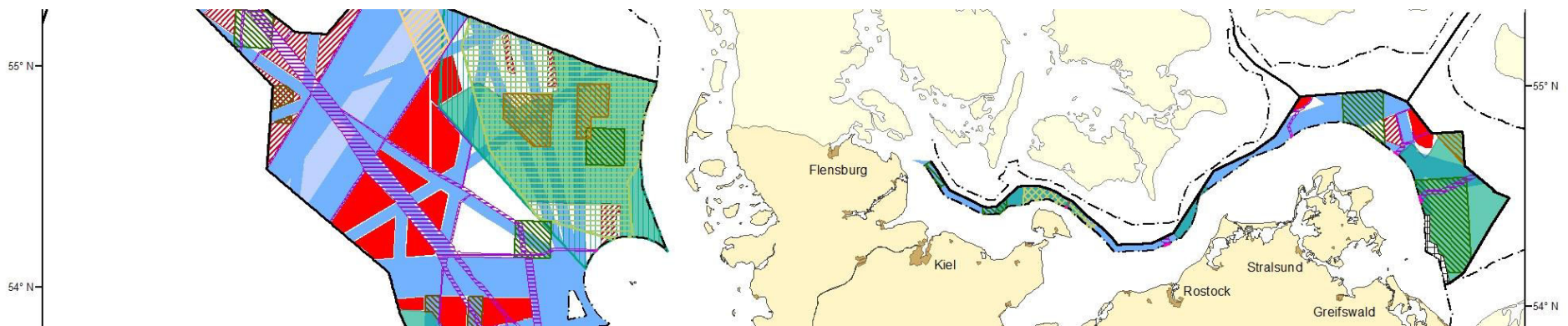
Integration

- Improved data and information, e.g. shipping
- A broader, more inclusive national planning process
- Transnational coherence – integration of neighbouring plans

Some challenges... but hopefully a happy end

- Covid 19 and running all team discussions and consultations online!
- Detailed data not always available for decision-making
- Cumulative effects of uses still difficult to assess
- Plans from other countries only becoming available now
- Some conflicts are ongoing and not likely to be finally resolved in short term

Plan expected to come into force in September 2021 – watch this space!



BALTIC 4th FORUM MSP



1-2 JUNE 2021, ONLINE

Delivering MSP Interactions and Capacities Across All Levels



EUROPEAN
REGIONAL
DEVELOPMENT
FUND



Ministry of Environmental
Protection and Regional
Development
Republic of Latvia

