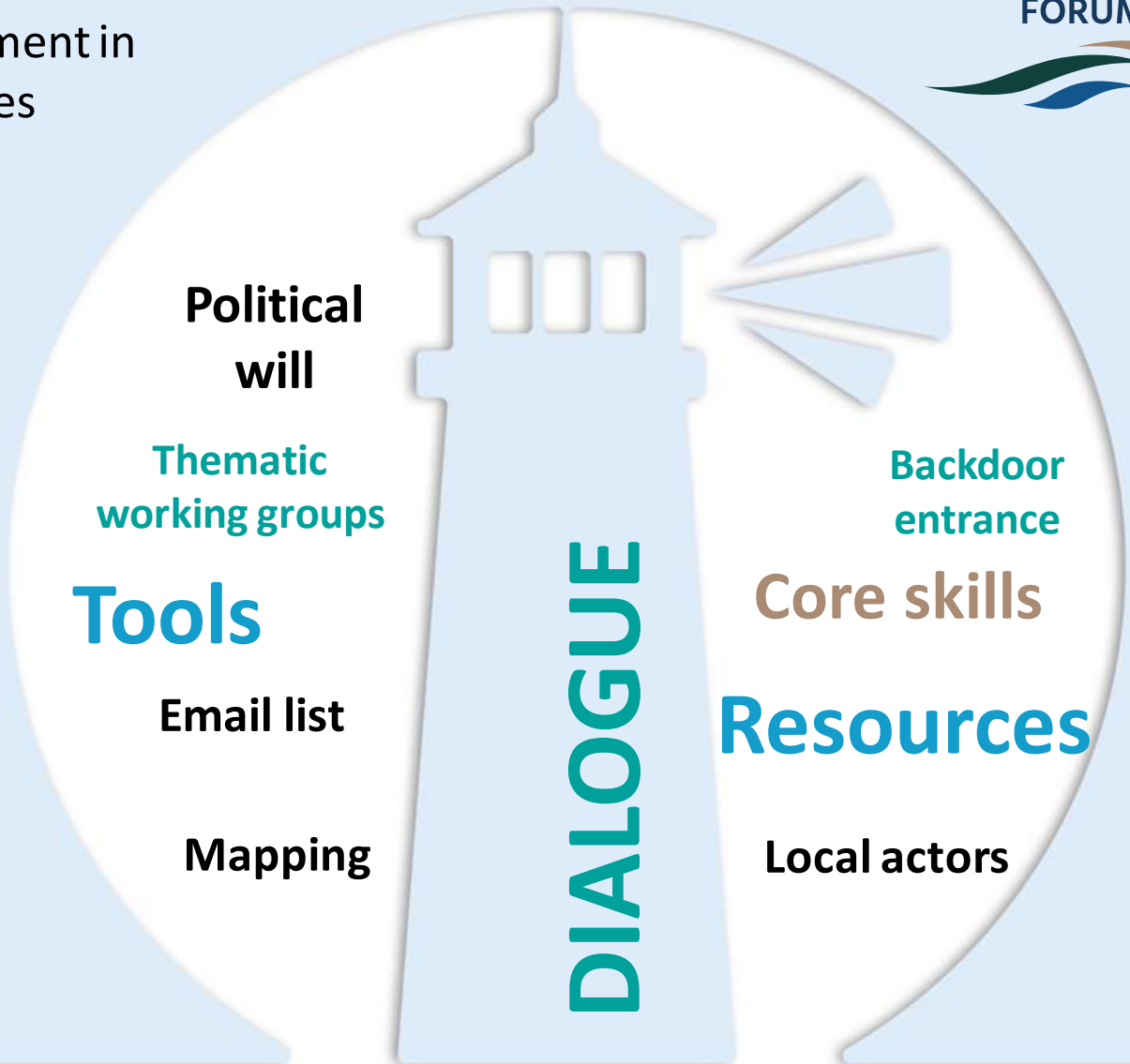


# WORKSHOP 1:

Fostering MSP through stakeholder involvement in national and international planning processes

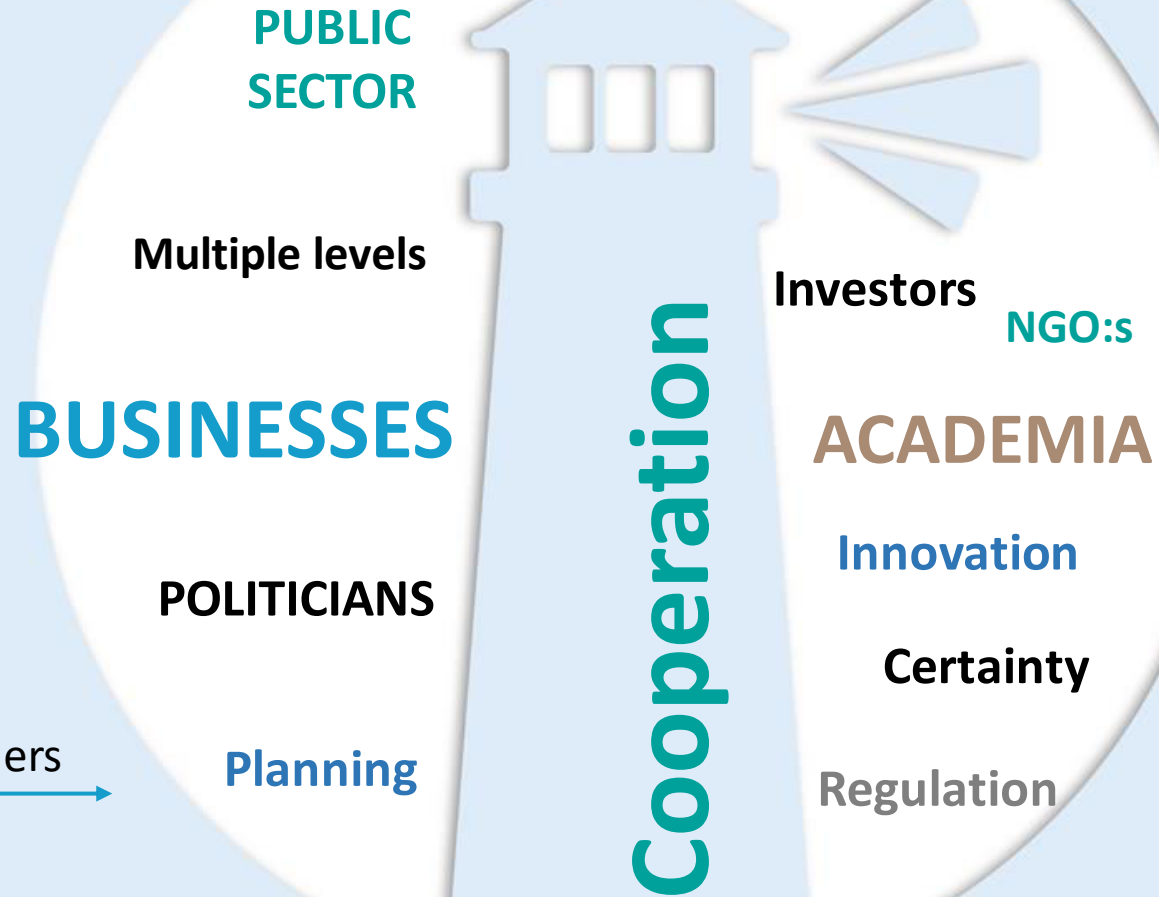
- Start involvement from the beginning
- Mix of fun & serious activities
- Everyone at the same table
- Continuing process of dialogue
- Coherence in MSP across the borders



## WORKSHOP 2:

Measuring, understanding and integrating blue economy aspects in planning – the role of the regional and local level

- Making MSP future proof
- Integrated approach – land and sea
- The role of innovation, synergies
- Methodological challenges
- Dialogue with relevant business stakeholders



# WORKSHOP 3:

## Marine Cultural Heritage – challenging part of MSP

MCH-MSP experience sharing – bi-directional learning process!

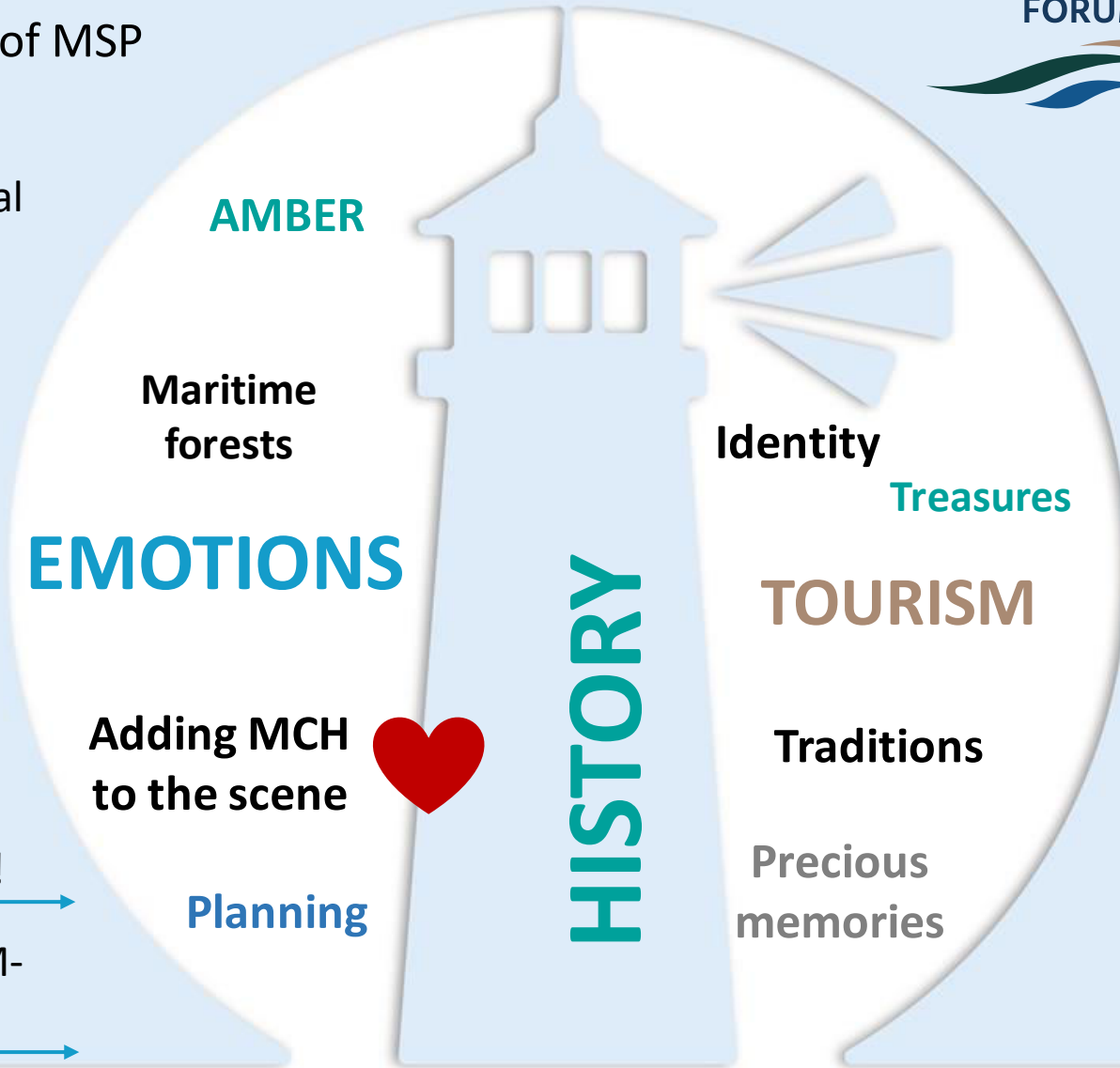
Joint knowledge of the sea – necessity for informed and smart decisions!

Different scales and different history creates challenges – we like them!

Intangible MCH – new guest onboard!

National MSP at final stage – with various intensity integrating MCH – let's be smarter!

Memorandum on cooperation with HELCOM-VASAB WG on MSP – sweet obligation!



# WORKSHOP 4:

Maritime Spatial Planning, towards good environmental status of the Baltic Sea

Effort to include MSP in the updated BSAP in line with the new MSP Roadmap.

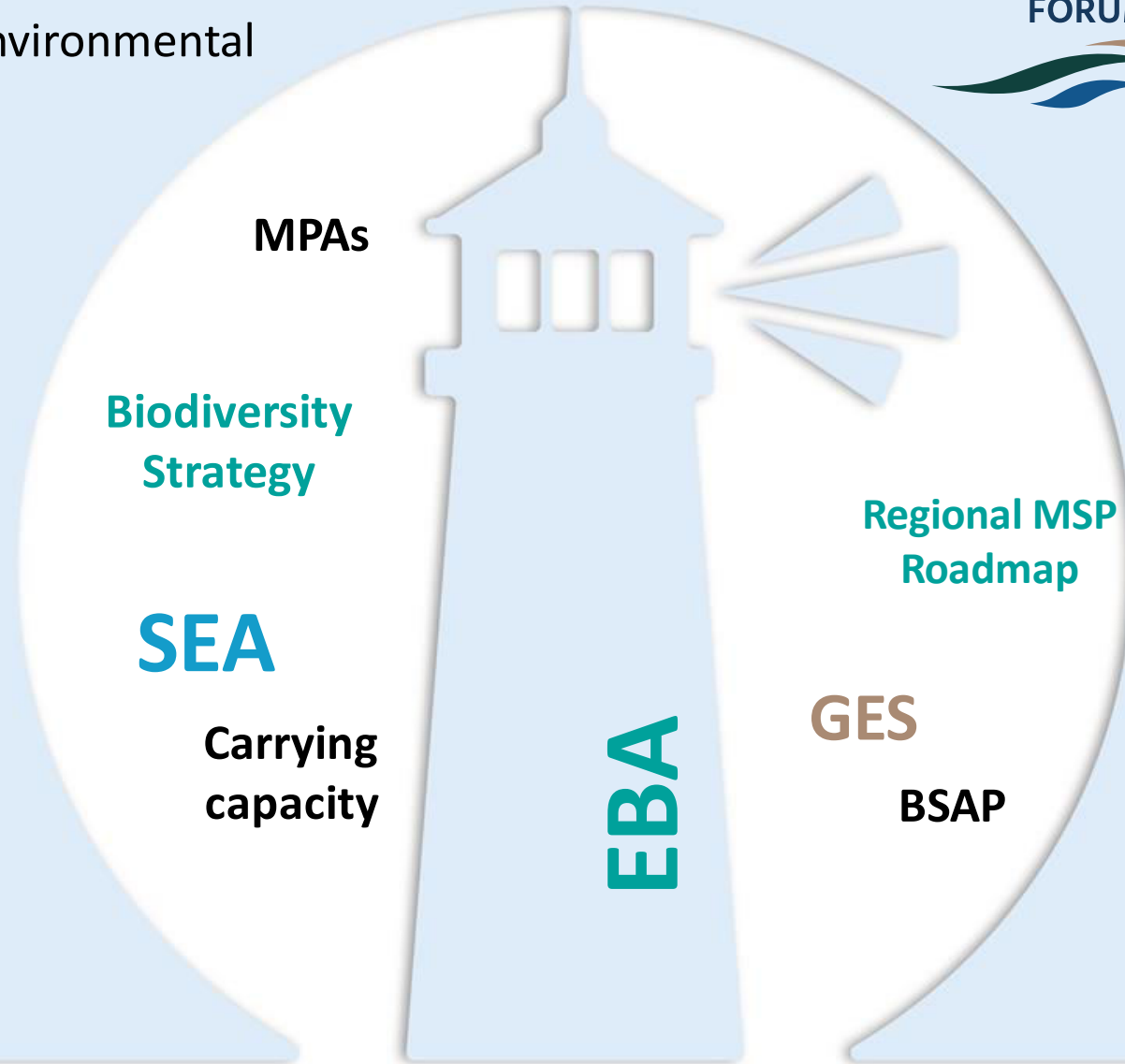
---

With Maritime Spatial Plans recently implemented, there are still many gaps to address in the future.

---

Biodiversity Strategy may increase environmental targets, it is important to think about how to include the link to MSP in further discussions and in the implementation.

---



# WORKSHOP 5:

The role of MSP in supporting sustainable ocean Multi-Use and Blue Economy

Multi-use for a more just and nature inclusive blue economy

Regulation barriers and uncertainty about impacts

Demo pilots, information sharing and permanent fora are the key

It needs to be driven by the policy and regulators are to drive pragmatic solutions

**COLLABORATION**

**aquaculture**

**site specific**

**Offshore wind**

**FISHERIES**

**IMPACTS**

**regulation**

**Habitat restoration**

**PILOTS**

# WORKSHOP 6:

## Land-sea interactions and values of local community

Locals as problem owners or victims

Site selection process shall be based on multiple aspects including local values

Not enough attention to climate change

Transdisciplinary approach (social science) highlights the local values

Integration between the levels; MLG

PLACE  
IDENTITY

NEW TOOLS

LIFESTYLE

TRADITIONS

MARITIME  
JOBS

LANDSCAPES

CULTURAL  
HERITAGE

# WORKSHOP 7:

Multi-level governance for the coast and the sea – the new normal?

We have to have open and inclusive dialogue

We have to be adaptive

Local – closer view, solutions

Regions as bridge

National authorities – broader view

Transnational – big picture, exchange of best practices

policy review

stocktaking

solution modelling

discussions

implementation

monitoring

place-based

**GUIDANCE**

stakeholders

collaboration

all governance levels

openness

facilitators



# WORKSHOP 8:

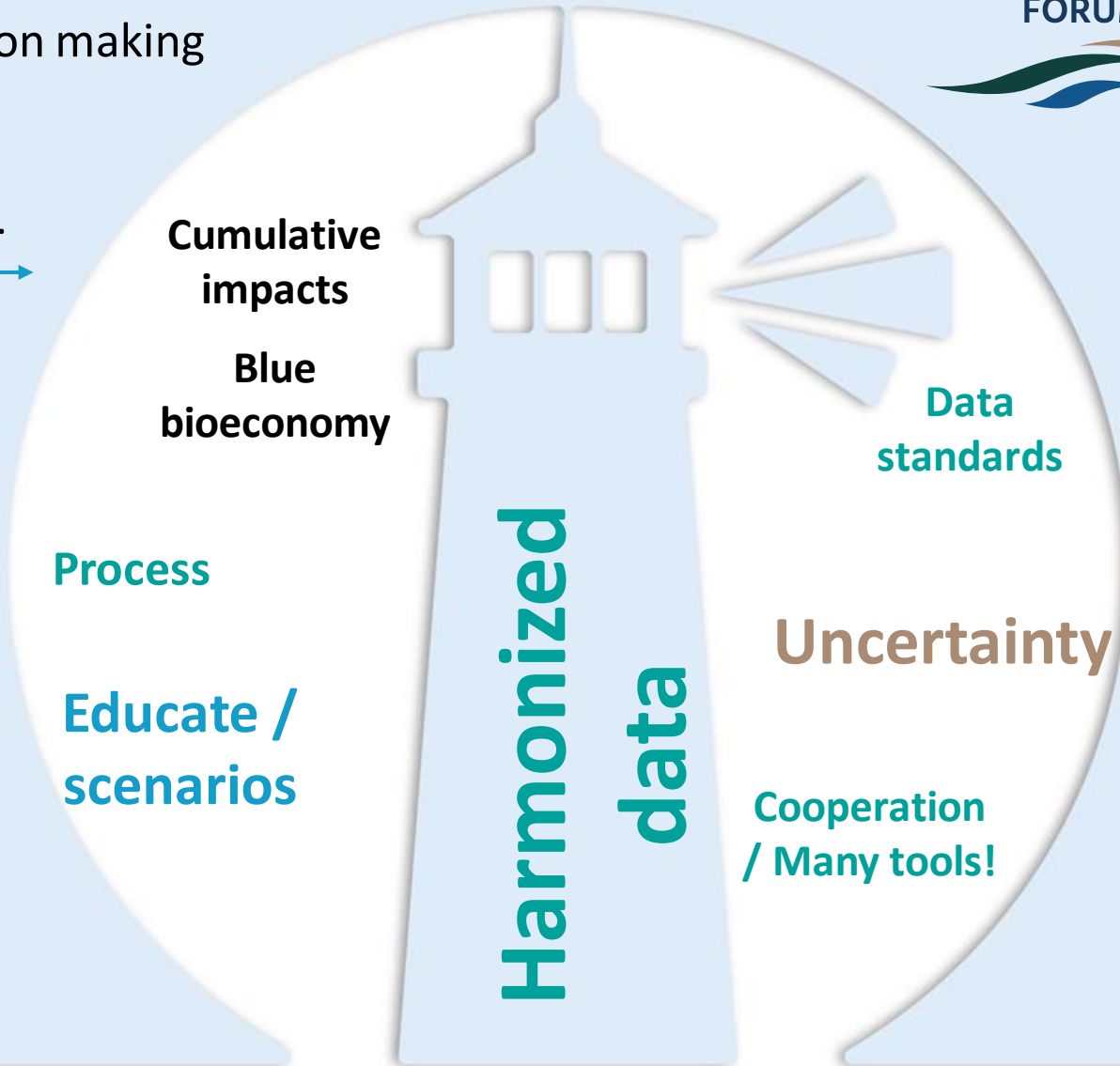
How to enhance tools for data driven decision making in MSP?

Many tools available for different purposes.

Updated and relevant data is the core (i.e. Harmonization)! The tools are evolving with time / development. Never ending story!

Targetted users: MSP, academics, etc. Knowledge is important! "All models are..."

It's time to pick up the best elements of each tools to have a common approach





# WORKSHOP 9:

MSP and Climate Change – from theory to practice in the Baltic Sea region

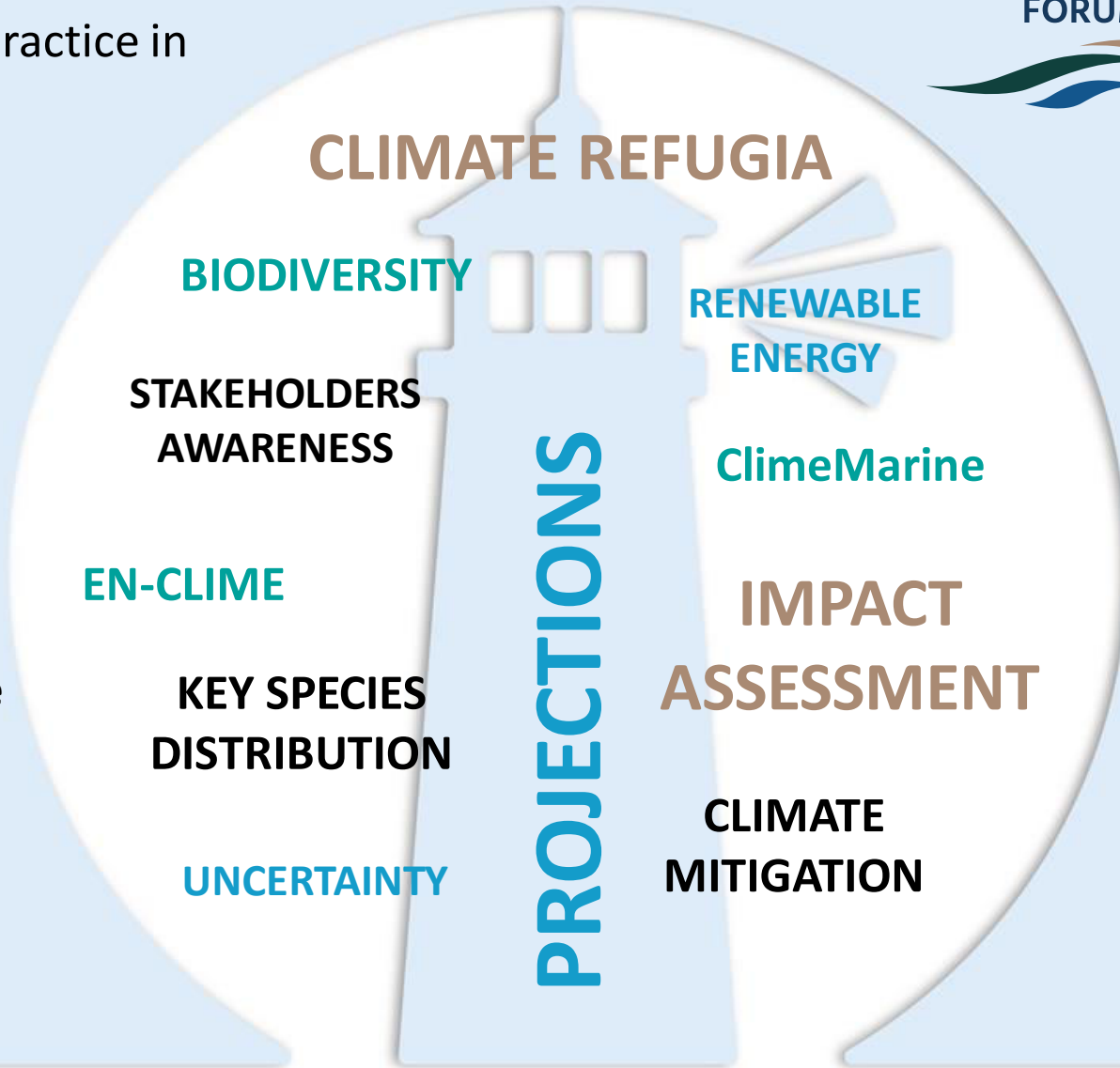
Experiences from national MSP - Sweden

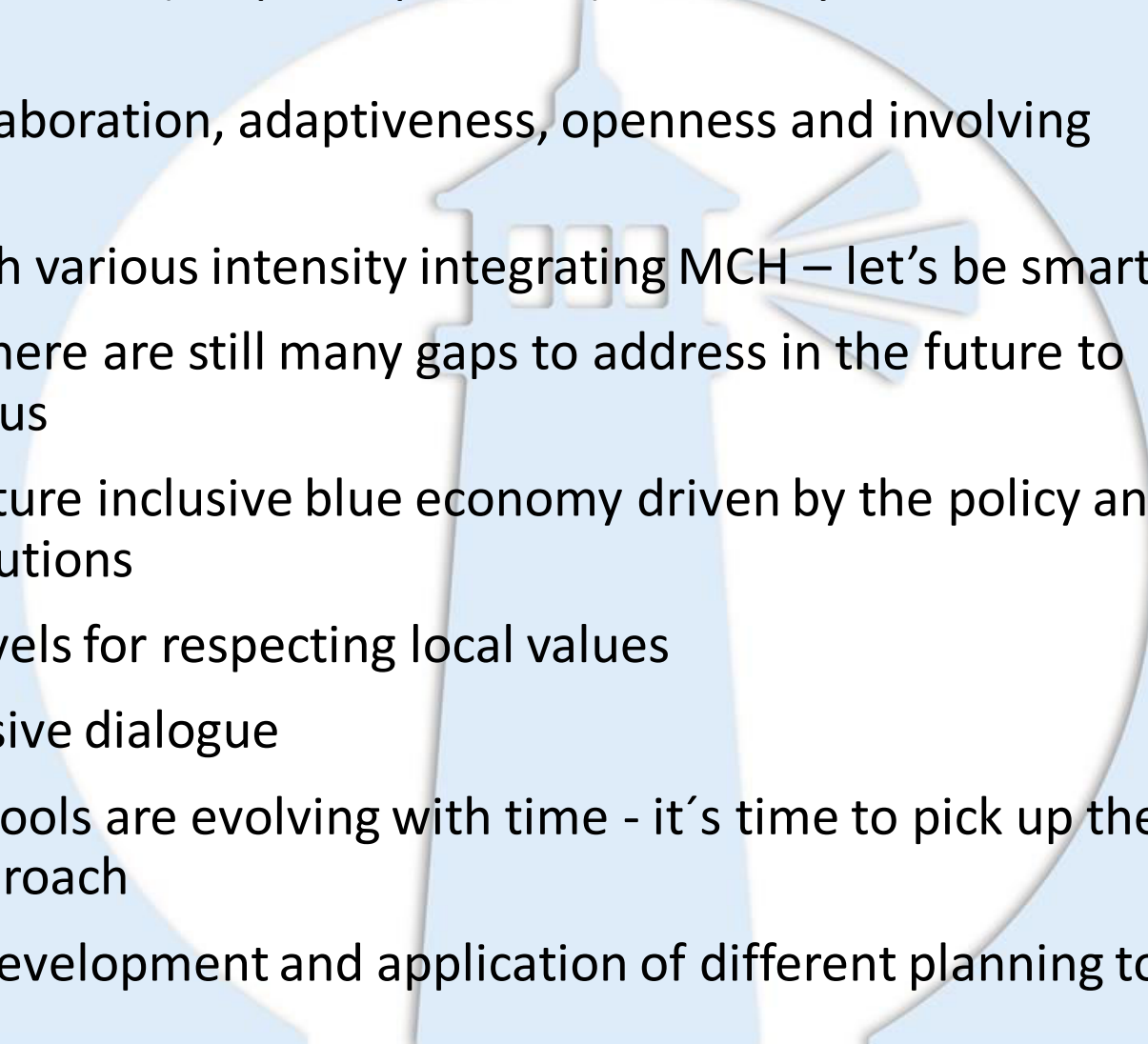
MSP in Denmark and renewable energy as a tool to meet climate change

Knowledge about climate change in the Baltic Sea Region assessed by EN CLIME

Assessing environmental impacts of climate change and the ClimeMarine project

Climate refugia and the future distribution of key foundation species in the Baltic Sea



- 
- Enhance stakeholder involvement skills (of spatial planners) for timely stakeholder involvement
  - Making MSP future proof by collaboration, adaptiveness, openness and involving relevant business stakeholders
  - National MSP at final stage – with various intensity integrating MCH – let's be smarter!
  - With MSP recently elaborated, there are still many gaps to address in the future to achieve good environmental status
  - Multi-use for a more just and nature inclusive blue economy driven by the policy and regulators to drive pragmatic solutions
  - Integration between planning levels for respecting local values
  - We have to have open and inclusive dialogue
  - Updated, relevant data as core, tools are evolving with time - it's time to pick up the best elements to have a common approach
  - To mitigate climate change the development and application of different planning tools are important