



VASAB Vision 2040: Options for actions

Hakan Uraz, REM Consult

Stakeholder Workshop organised under the auspices of the German
Chairmanship of the VASAB CSPD/BSR – *Online, 16 May 2022*

**“Wer Visionen hat,
soll zum Arzt gehen.“**

HELMUT SCHMIDT
1918 - 2015

Chancellor of the Federal Republic
of Germany, 1974 - 1982

<https://www.futuristgerd.com/2021/03/if-you-have-visions-you-should-go-see-a-doctor-those-were-different-days/>

**„Those with visions,
should see a doctor.“**

HELMUT SCHMIDT
1918 - 2015

Chancellor of the Federal Republic
of Germany, 1974 - 1982

<https://www.futuristgerd.com/2021/03/if-you-have-visions-you-should-go-see-a-doctor-those-were-different-days/>



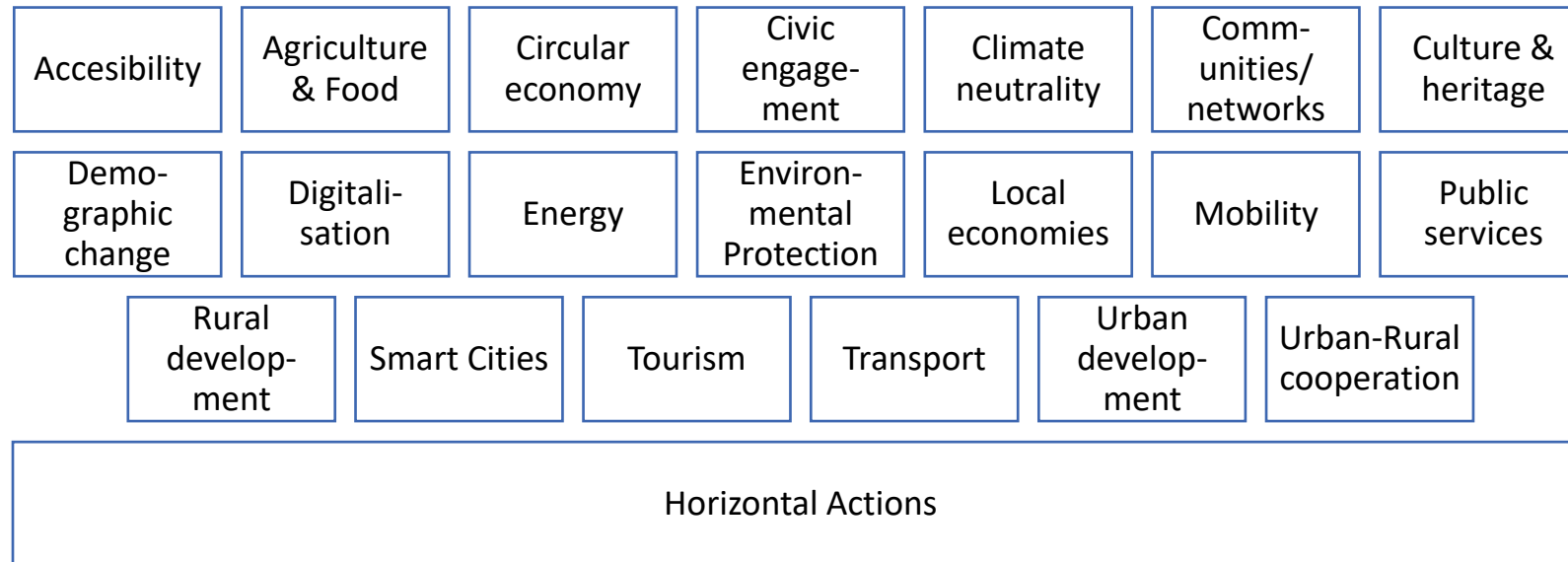
Visions need to be combined with actions. Reflecting on possible desirable futures may easily be turned into daydreaming, lacking concrete focus and direction. Visions need to be combined with actions and vice versa (Böhme and Lüer, 2016). The VASAB 2040 vision shall **describe a desirable future** and give the overall direction of where the Baltic Sea Region should go. This direction in itself paves the way for **coordinated actions and steps to be taken** to get closer to the overarching future of the vision. Actions linked to the VASAB vision for 2040 shall inform policy makers to realise this desirable future.

(VASAB. LTP Background Synthesis Report, March 2022)

Characteristics of updated LTP

- Very wide – especially compared to the previous LTP

**21 Thematic
Areas derived
from LTP by
REM Consult**



- Planning actors alone will not be sufficient for implementation
- List of PFAs not exhaustive, more ideas needed



Pearls

Local Pearls

- Vibrant, diversified local economies
- Quality of life and social cohesion
- Nature and ecosystem services
- Urban-rural partnerships

Small and Medium Pearls

- Pioneers for innovation
- Smart specialization and smart shrinking
- City networks
- Centers for services
- Human-centricity

Metropolitan Pearls

- Interfaces to the world
- Profiling, networks
- City-Surrounding Cooperation, Greater Region responsibility
- Diverse neighborhoods
- Greener metropolises
- Diplomacy

Carbon neutral Baltic pearls

Community-led cooperative economies

Small pearls academy network

The Baltic necklace

Innovative digital services of general interest

Adaptation policies for demographic change / ageing

Urban pearls and their growth functional geography

Sustainable tourism initiatives

Metropolitan visions

Possible Future Actions

Possible Future Actions	Regional to Global Strings	Physical Strings	Maritime Strings	Virtual Strings	Energy Strings
	<ul style="list-style-type: none"> Climate-neutral traffic Connection to global economy 	<ul style="list-style-type: none"> Intermodal freight transport Night and high-speed trains Regional train connections 	<ul style="list-style-type: none"> Greener and smarter shipping and ports Substitutes for air transport Safe shipping 	<ul style="list-style-type: none"> Grid connection Digitalization eGovernment Cyber security "Green" data centers Virtual inclusion 	<ul style="list-style-type: none"> Renewable energies Democratisation of energy supply ("prosumer") Integrated energy networks
	<i>Joint offers on Mobility as a Service (MaaS)</i>				
	<i>Multimodal systems to connect places</i>				
	<i>Transport and energy networks</i>	<i>Sustainable Baltic train network</i>	<i>„Green“ maritime transport networking</i>	<i>Digital services for all</i>	<i>Baltic energy network of decentralised systems</i>
	<i>Baltic Lighthouses</i>		<i>Short distance shipping</i>		
	<i>Integrated mobility plans</i>				



Patches

Blue Patches

- Clean Baltic Sea
- Offshore energy
- Islands as frontrunners for circular economy and renewables
- Coastal Zones: Biodiversity and Human Use

Green Patches

- Ecosystem services
- Green belts
- Biodiversity
- Renewable energy generation
- Balance of human activities and nature

Tasty Patches

- Sustainable agriculture, aquaculture and fisheries
- Regional foods and specialties

Branding the Baltic Sea Region quality of life

Baltic renewable energy booster

New tools for evaluating dynamics and processes at sea

Baltic green infrastructure network for the green patches

Baltic eco-villages and kitchens

Connecting cultural heritage paths

Adjusting Baltic Sea Region agriculture to climate change

Possible Future Actions

Systems

Cooperating Systems

- Integration of sea and land-based planning tools of all member states
- Digitization of planning processes and data exchange
- Cooperation with relevant sectors (e.g., energy, transport, rural development)
- Multi level governance
- Macro-regional cooperation: EU Strategy for the Baltic Sea Region, pan-Baltic organisations
- Involvement of civil society

Possible Future Actions

VASAB planners forum academy

Multi-use land-sea interaction planning

Integrated land & sea observations and assessments

Digital Baltic Sea Region planning sharing platform

Baltic Sea Region citizen involvement



Implementation opportunities

- Baltic Sea Region Programme (Interreg B)
- Interreg A cross-border programmes (e.g. South Baltic, DE-DK, DE-PL)
- Other EU funding programs (Horizon Europe, LIFE, EMFAF etc.)
- Platforms and cluster projects (Interreg / EUSBSR)
- Decentralised cooperation projects (e.g. LEADER/Community-Led Local Development scheme)
- Intergovernmental or national projects and initiatives, e.g. pilot actions designed according to the Territorial Agenda 2030
- Spatial planning at state level, territorial planning model projects (e.g. MOROs in GER)
- Implementation via upscaling/transferring of successfully implemented approaches and projects

● Interreg Baltic Sea Region



- „Core projects“ and „small projects“
- Structure of regular projects (core projects):
 - Identification of a common challenge
 - development,
 - piloting, evaluation and
 - Transfer of innovative, practical solutions
- Main actors and target groups: Public administration
- Co-Financing rate 80%, Budget: no limit, orientation 2-4m EUR

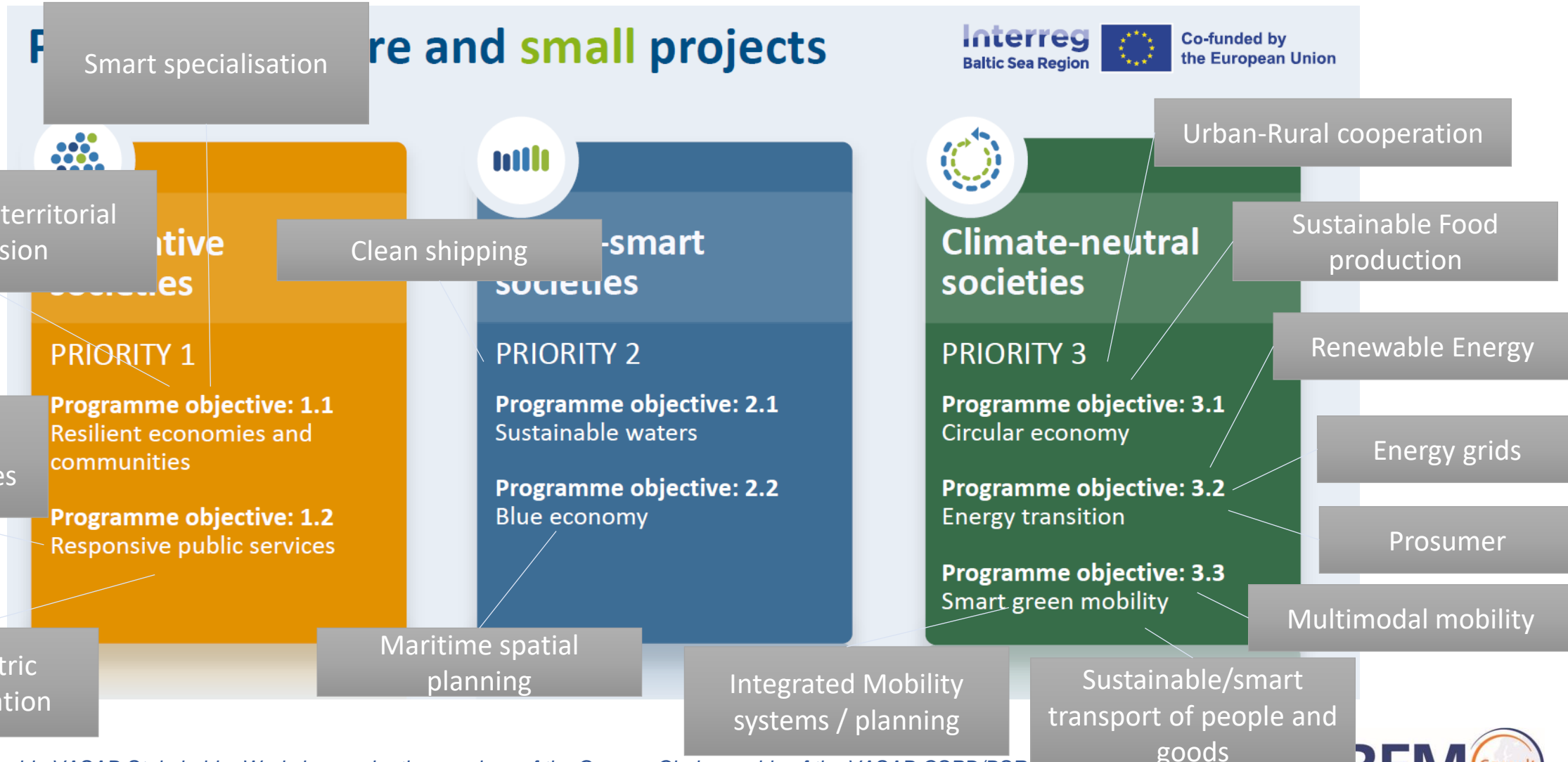


Interreg
Baltic Sea Region

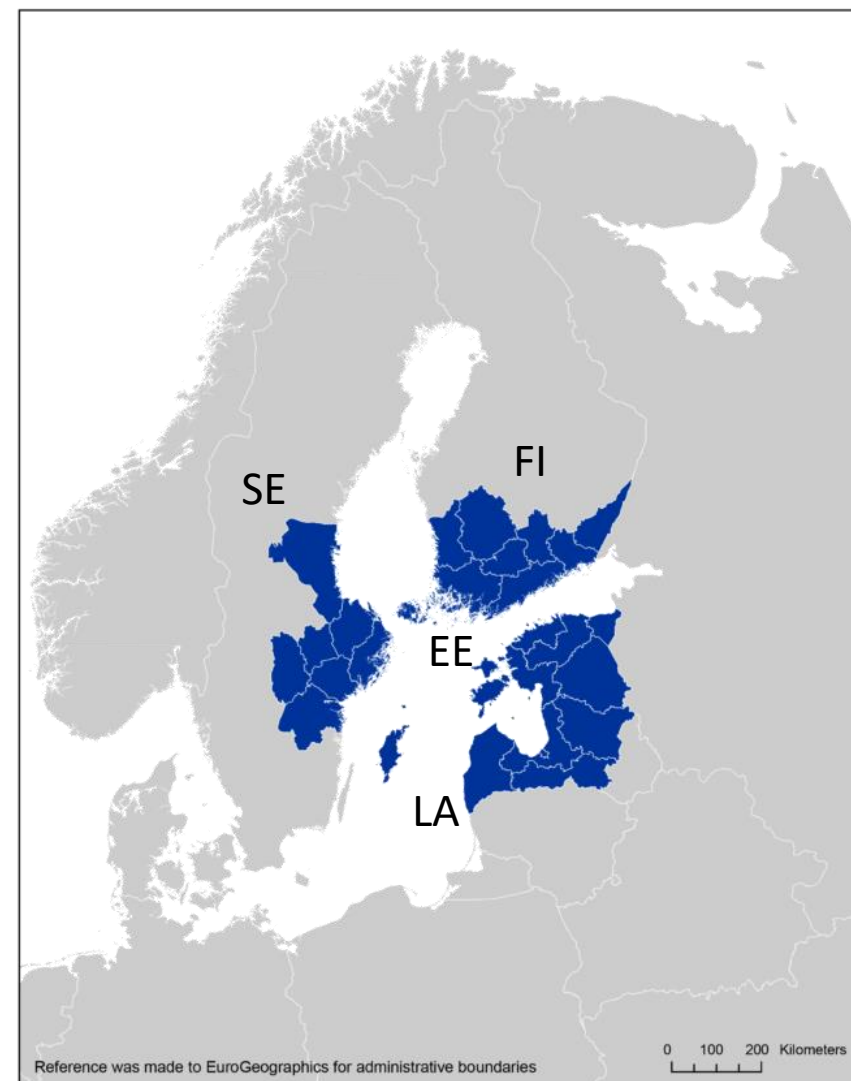


Co-funded by
the European Union

Interreg Baltic Sea Region



Interreg A - Central Baltic



INNOVATIVE
BUSINESS DEVELOPMENT

1. MORE EXPORTS BY SMEs

2. MORE NEW SCALED-UP
GROWTH COMPANIES

IMPROVED
EMPLOYMENT OPPORTUNITIES

6. IMPROVED EMPLOYMENT
OPPORTUNITIES
ON LABOUR MARKET

IMPROVED ENVIRONMENT
AND RESOURCE USE

3. JOINT CIRCULAR ECONOMY
SOLUTIONS

4. IMPROVED COASTAL AND
MARINE ENVIRONMENT

IMPROVED
PUBLIC SERVICES

7. IMPROVED PUBLIC SERVICES
AND SOLUTIONS
FOR THE CITIZENS

*Confirmation by the EU Commission und Member States pending

Interreg A - South Baltic



INNOVATIVE



PRIORITY AXIS (PA)

SOUTH BALTIC MEASURE

PA 1 Innovative South Baltic – enhancing the level of innovation and internationalisation of local actors

1.1 Digitising the region
1.2 Building connectivity of the region through internationalisation

SUSTAINABLE



PA 2 Sustainable South Baltic – promoting sustainable development and blue and green economy

2.1 Supporting transition towards green energy
2.2 Promoting sustainable use of water
2.3 Supporting a circular and more resource efficient development

ATTRACTIVE



PA 3 Attractive South Baltic – activate the tourist and cultural potential of the SBA

3.1 Developing sustainable, resilient and innovative tourism

ACTIVE



PA 4 Active South Baltic – improving cooperation governance

4.1 Strengthen the cooperation capacity of actors based within the SBA, including civil society



*Confirmation by the EU Commission und Member States pending

Interreg A | DE -DK



Interreg
Deutschland - Danmark



EUROPEAN UNION



WIR FÖRDERN ZUSAMMENHALT
VI STØTTER SAMHØRIGHED



Eine innovative Region
An innovative Region



Eine grüne Region
A green Region



Eine attraktive Region
An attractive Region



Eine funktionelle Region
A functional Region



• Interreg A (others in BSR)

- Interreg V-A - Germany-Poland (Mecklenburg-Vorpommern/Brandenburg-Pommerskie)
- Interreg V-A - Lithuania-Poland
- Interreg V-A - Latvia-Lithuania
- Interreg V-A - Sweden-Denmark-Norway (Öresund-Kattegat-Skagerrak)
- Interreg V-A - Sweden-Finland-Norway (Botnia-Atlantica)
- Interreg V-A - Sweden-Finland-Norway (Nord)
- Interreg V-A - Sweden-Norway

● Other EU-Programmes

- **Horizon Europe:**
 - Almost all topics of the LTP covered, however calls are very specific
 - Ambitious missions, including additional spatial planning relevant ones (e.g. climate neutral cities, climate change adaptation, New European Bauhaus)
 - Attractive funding rates (100%+overhead), highly competitive
 - Particularly suitable for larger pearls, academia needed
- **LIFE:** nature conservation, biodiversity, climate protection, climate adaptation
- **EMFAF:** e.g. local economy, nutrition, tourism

● Decentrally cooperation projects

- Cooperation of partners who receive their funding from decentrally managed EU funds (member states operational programmes, e.g ESF)
- LEADER principle / CLLD: Regional development concepts (Local Action Groups, LAGs), with their own budgets, bottom-up projects with a strong local focus
- Little is known about the possibility of interregional and transnational cooperation projects within these schemes
- Suitable e.g. for rural development, local economy (local pearls), natural and cultural heritage (green patches)



Implementation opportunities

- Baltic Sea Region Programme (Interreg B)
- Interreg A cross-border programmes (e.g. South Baltic, DE-DK, DE-PL)
- Other EU funding programs (Horizon Europe, LIFE, EMFAF etc.)
- Platforms and cluster projects (Interreg / EUSBSR)
- Decentralized cooperation projects (e.g. LEADER/Community-Led Local Development scheme)
- Integrated Territorial Actions (ITI)
- Intergovernmental or national projects and initiatives, e.g. pilot actions designed according to the Territorial Agenda 2030
- Spatial planning at state level, territorial planning model projects (e.g. MOROs in GER)
- Implementation via upscaling/transferring of successfully implemented approaches and projects