

# The **Neighborhood** Guide to

Demographic Challenges and Inclusive Societies

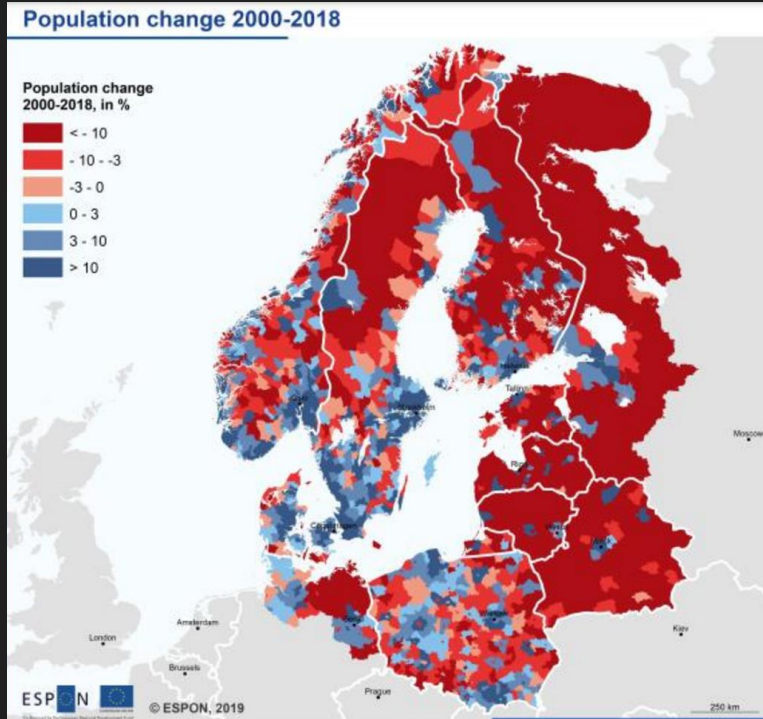


# The **Neighborhood** Guide to *the Baltic Sea Region*

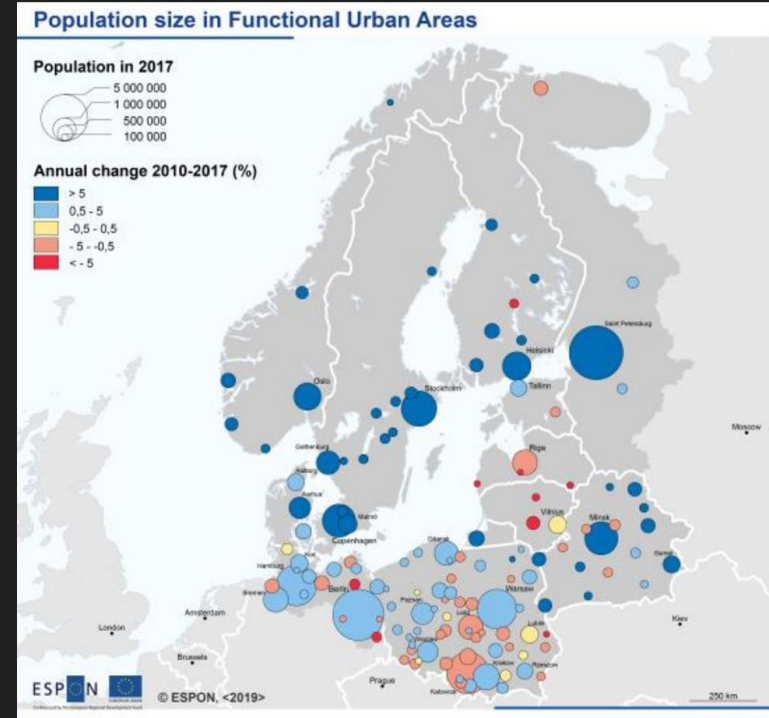
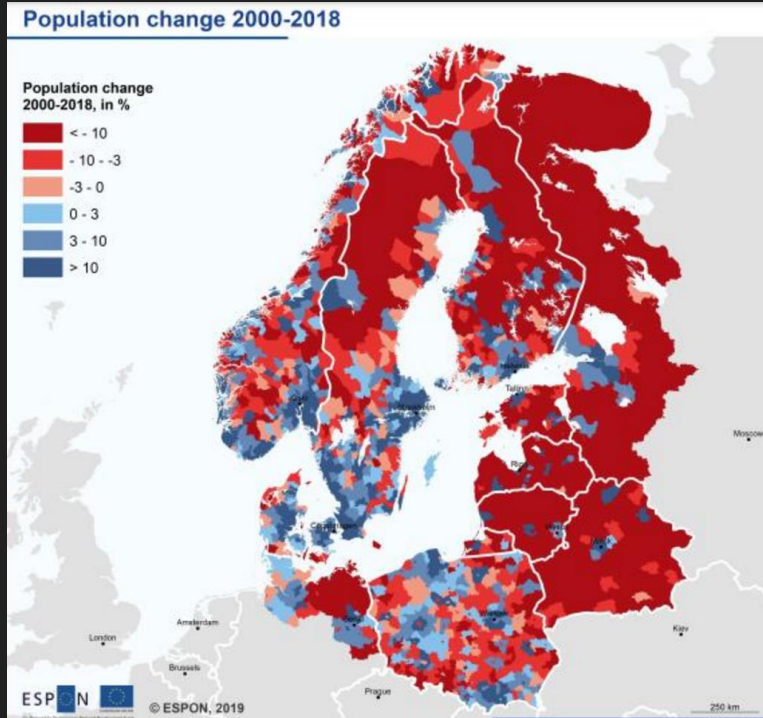
Demographic Challenges and Inclusive Societies



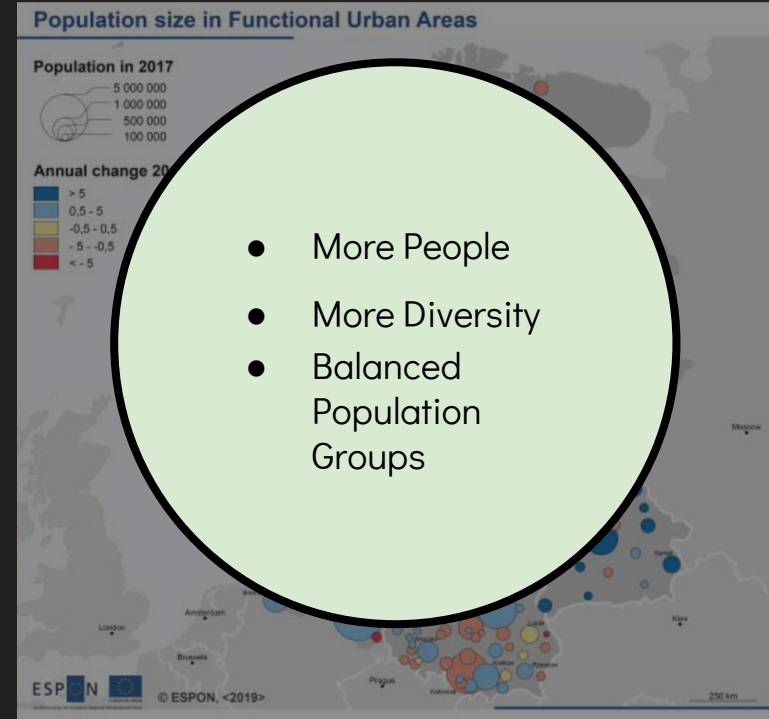
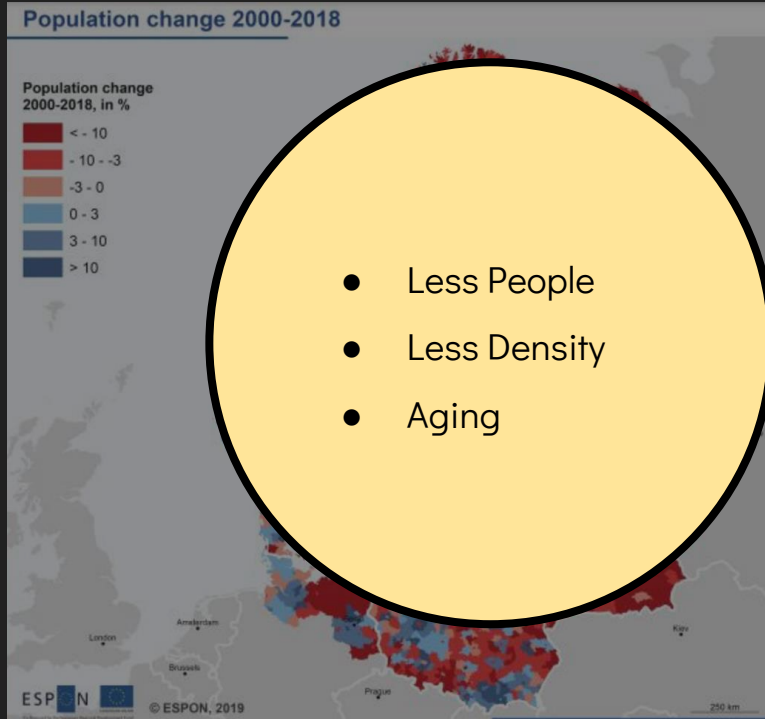
# Change in Population Dynamics

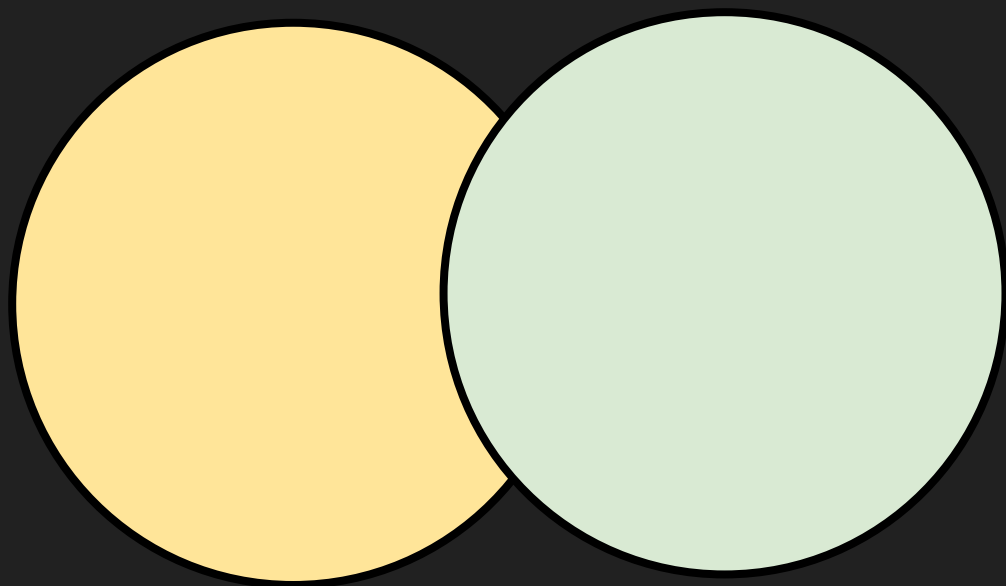


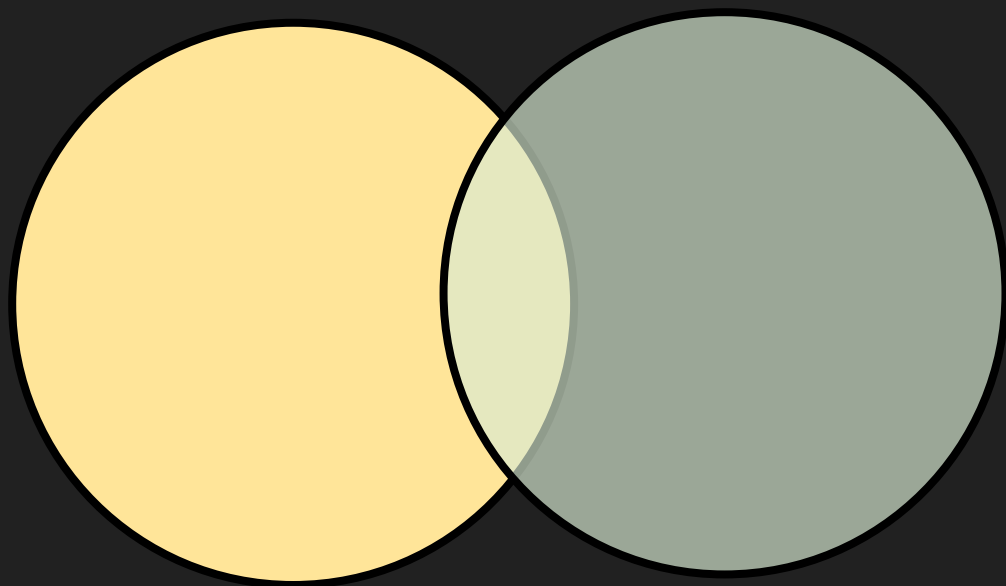
# Change in Population Dynamics



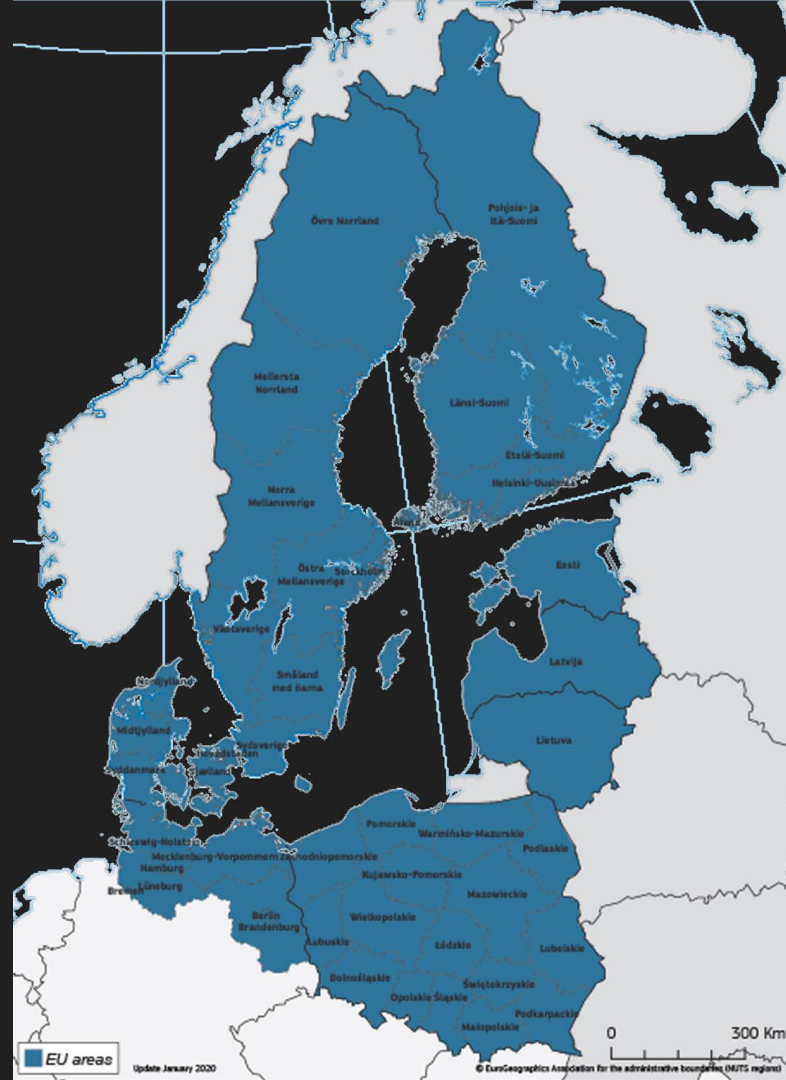
# Change in Population Dynamics





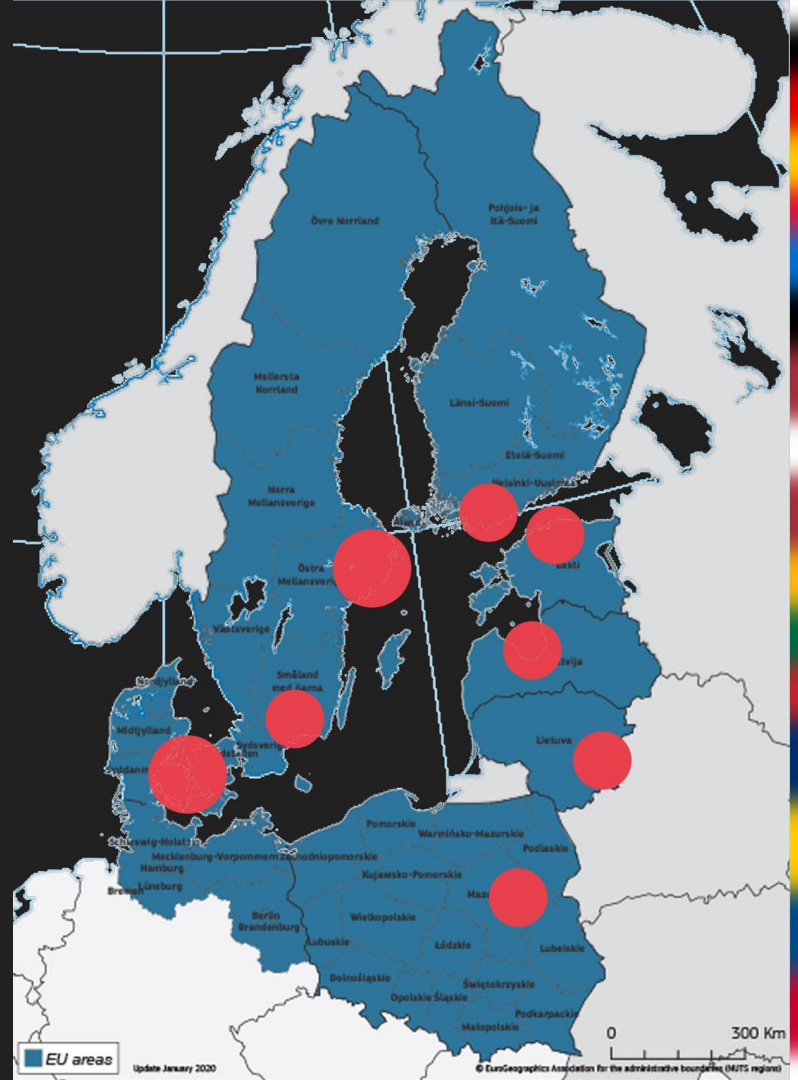


# Target Area





## Major Urban Cities

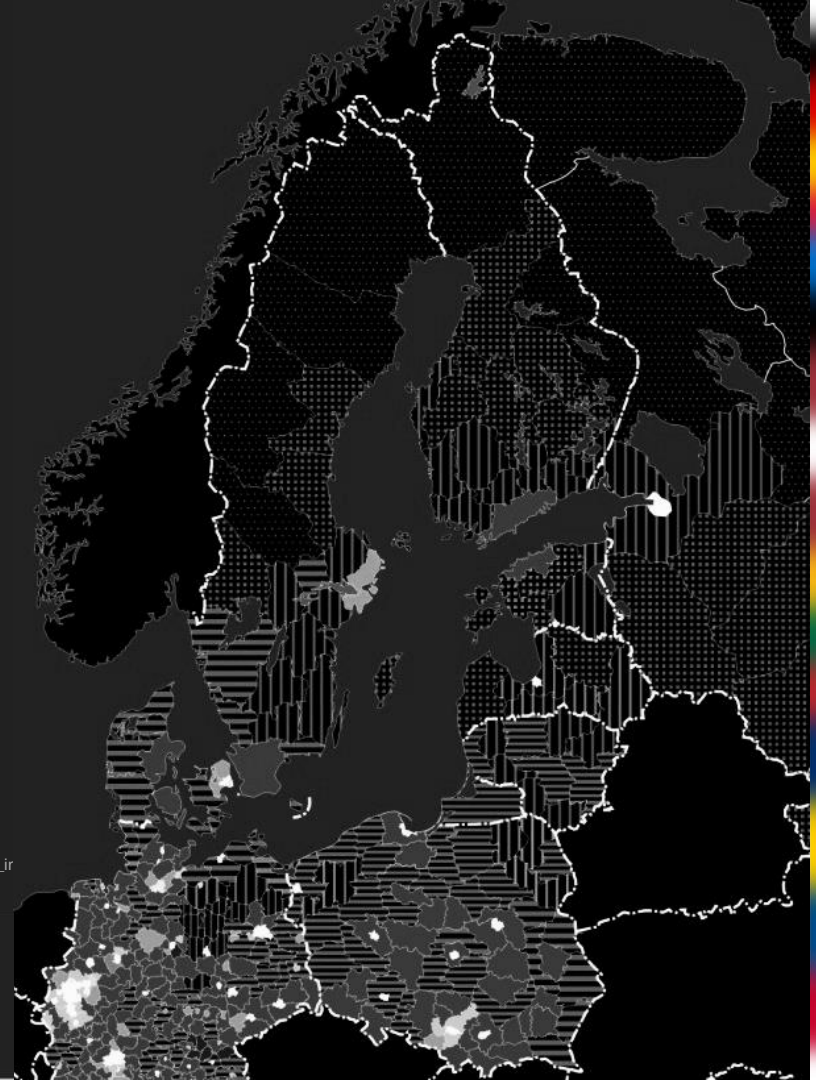




# Why Neighborhoods?

[https://www.researchgate.net/publication/319132172\\_The\\_influence\\_of\\_the\\_sea\\_on\\_the\\_economic\\_development\\_and\\_settlement\\_structure\\_ir](https://www.researchgate.net/publication/319132172_The_influence_of_the_sea_on_the_economic_development_and_settlement_structure_ir)

**Population density, 2015**  
people km<sup>2</sup>

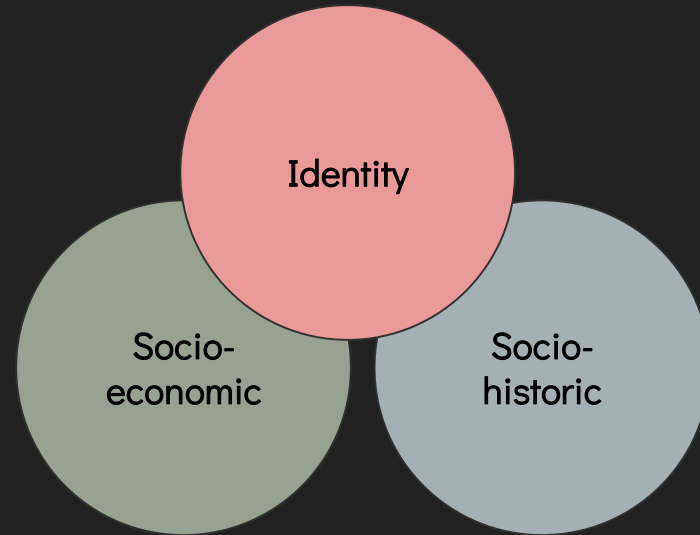
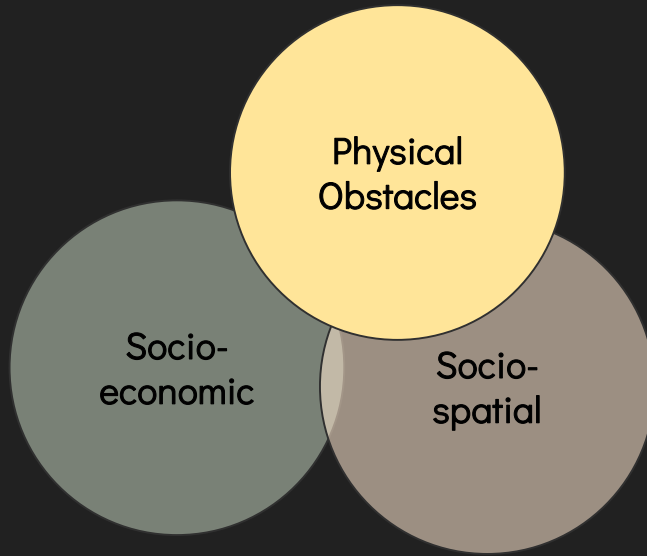


# Loneliness - what is it about?

- A shared experience of distress when one's social needs are not met
- Affects mental and physical wellbeing
- Physical areas enable or limit social relationships
- The significant role of the neighbourhood as a community

# What's the problem?





Mjølnerparken



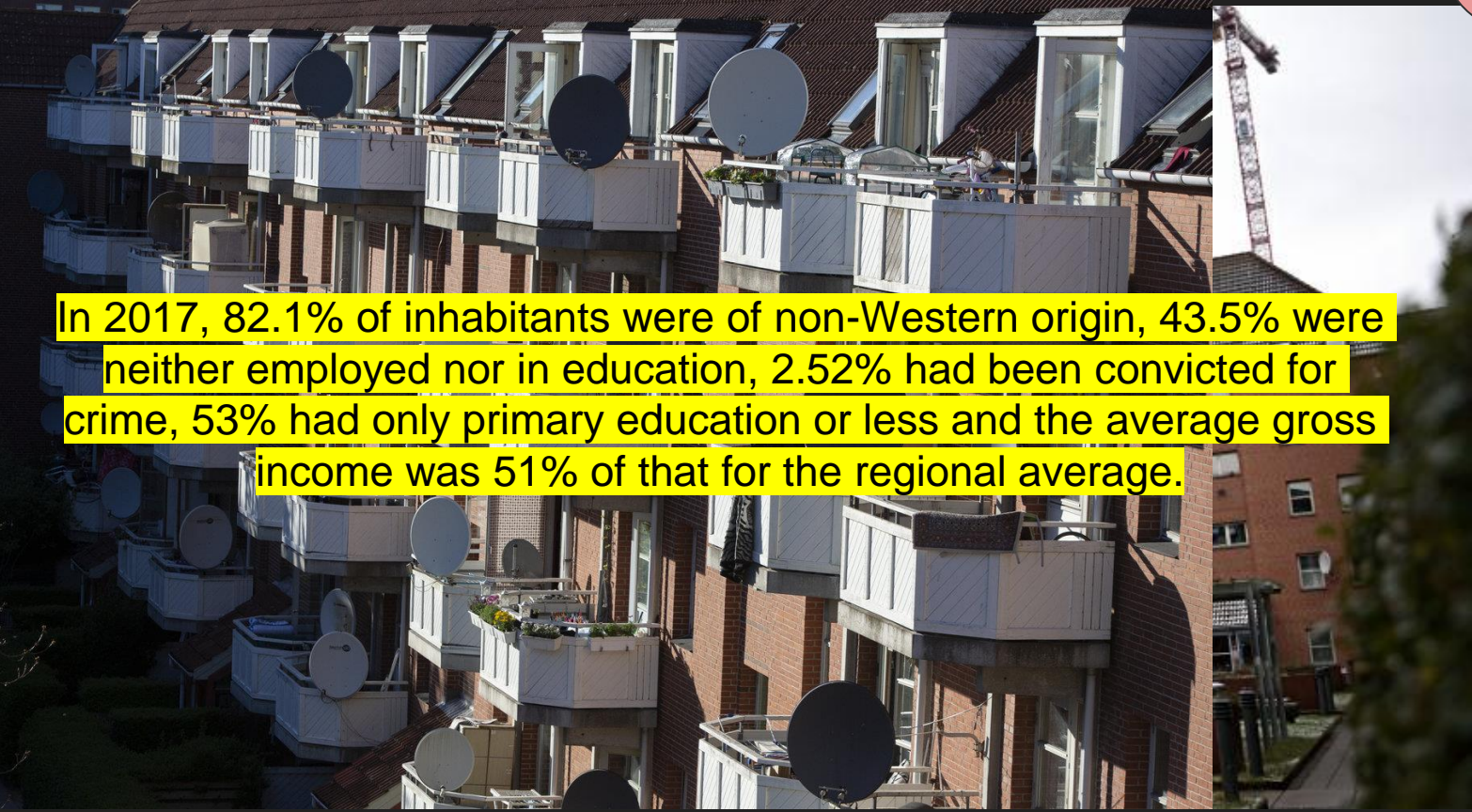






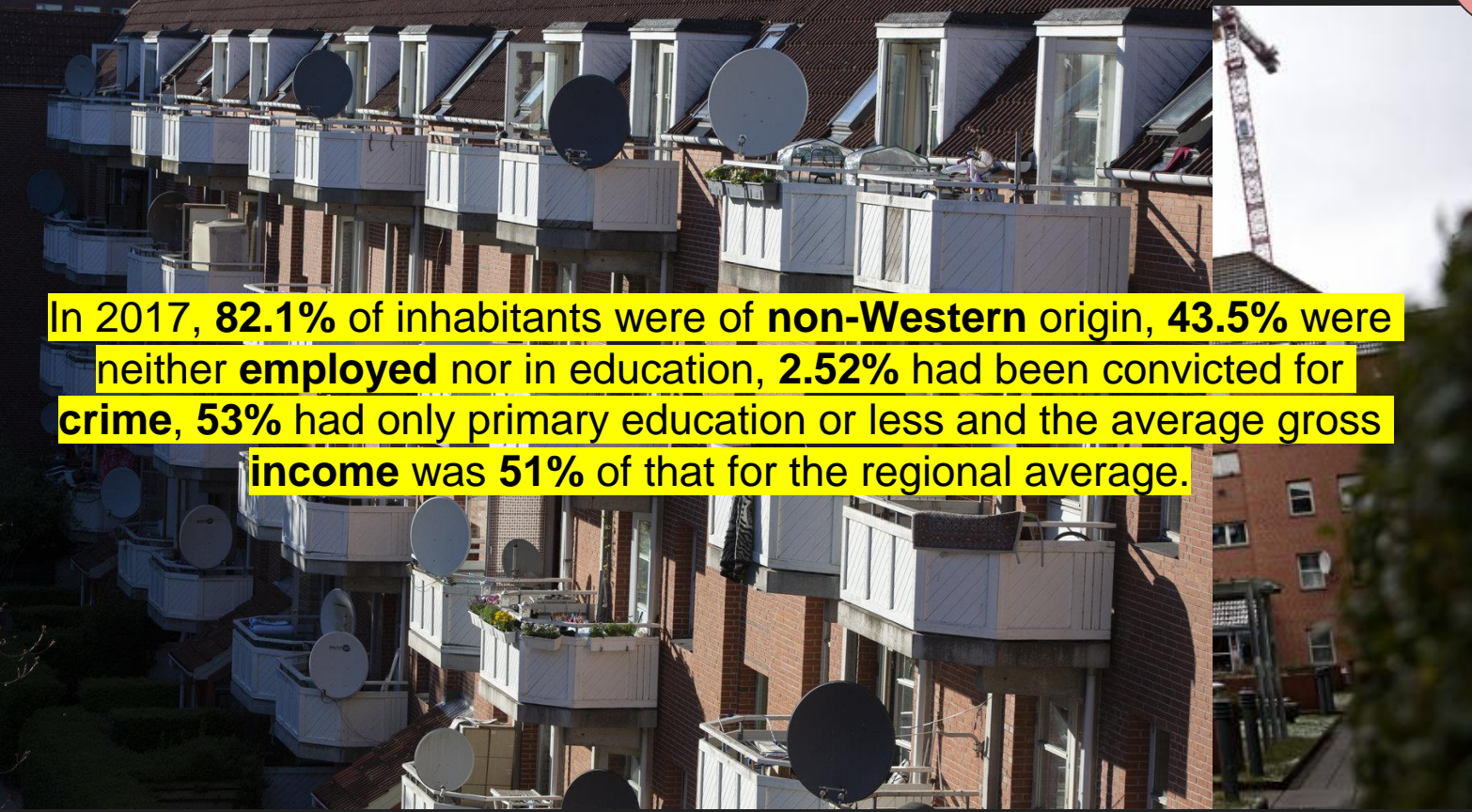
Proactive  
approach  
es





In 2017, 82.1% of inhabitants were of non-Western origin, 43.5% were neither employed nor in education, 2.52% had been convicted for crime, 53% had only primary education or less and the average gross income was 51% of that for the regional average.





In 2017, **82.1%** of inhabitants were of **non-Western** origin, **43.5%** were neither **employed** nor in education, **2.52%** had been convicted for **crime**, **53%** had only primary education or less and the average gross **income** was **51%** of that for the regional average.

Proactive  
approach  
es

Immigrant Suburbs

No Go Zones

Russian Speaking  
Majority Areas

Ghetto List

"LOW INCOME"  
Groups

# Neighborhood Identity

Data Representation

Facts

Figures

Statistics

# Neighborhood Identity

Data Mis-Representation?

Facts

Figures

Statistics

# Neighborhood Identity

Data Mis-Representation?



Facts

Figures

Statistics

Representing the neighborhoods?

# Re-recognizing the Neighborhoods

Alternative Discourse and strategies:

Spatial and Data Connotations

Semiotics

Reputation



# Re-recognizing the Neighborhoods

Alternative Discourse and strategies:

## Spatial and Data Connotations

Semiotics

Reputation



# Re-recognizing the Neighborhoods

Alternative Discourse and strategies:

Spatial and Data Connotations

Semiotics

Reputation



# Re-recognizing the Neighborhoods

Alternative Discourse and strategies:

Spatial and Data Connotations

Semiotics

Reputation

1. The proportion of 18-64-year-olds with no connection to the labor market or education exceeds 40 per cent. (average for the past 2 years). (Bispehaven 46.5; Gellerupparken 52.3; Trigeiparken 46.2)
2. The proportion of immigrants and descendants from non-Western countries exceeds 50 per cent. (Bispehaven 67.0; Gellerupparken 80.0; Trigeiparken 34.7)
3. The number of people convicted of violating the Criminal Code, the Weapons Act or the Act on Intoxicating Substances exceeds 2.70 per cent. of residents aged 18 and over (average for the past 2 years). (Bispehaven 2.89; Gellerupparken 4.76; Trigeiparken 3.27)
4. The proportion of residents aged 30-59 who only have a basic education (incl. unspecified education) exceeds 50 per cent. of all residents in the same age group. (Bispehaven 47.7; Gellerupparken 57.1; Trigeiparken 55.8)
5. The average gross income for taxpayers aged 15-64 in the area excluding education seekers is less than 55 per cent. of the average gross income for the same group in the region. (Bispehaven 58.6; Gellerupparken 52.1; Trigeiparken 62.8)

Source: Ministry of Town, Housing and Rural Affairs.

# Re-recognizing the Neighborhoods

Alternative Discourse and strategies:

Spatial and Data Connotations

Semiotics

Reputation

1. The proportion of 18-64-year-olds with no connection to

Subscriber Only

Politics

## NYC Spent Half a Million Dollars Per Inmate in 2020, Report Says

- Corrections department spending jumped 30% from a year ago
- Comptroller reiterates calls to close down Rikers Island jail



Rikers Island jail complex in the Bronx borough of New York City. Photographer: John Moore/Getty Images

By Fola Akinnibi

March 10, 2021 at 9:59 PM GMT+1

LIVE ON BLOOMBERG  
Watch Live TV >  
Listen to Live Radio >

### Most Read

Business  
**Korea Shatters Its Own Record for World's Lowest Fertility Rate**

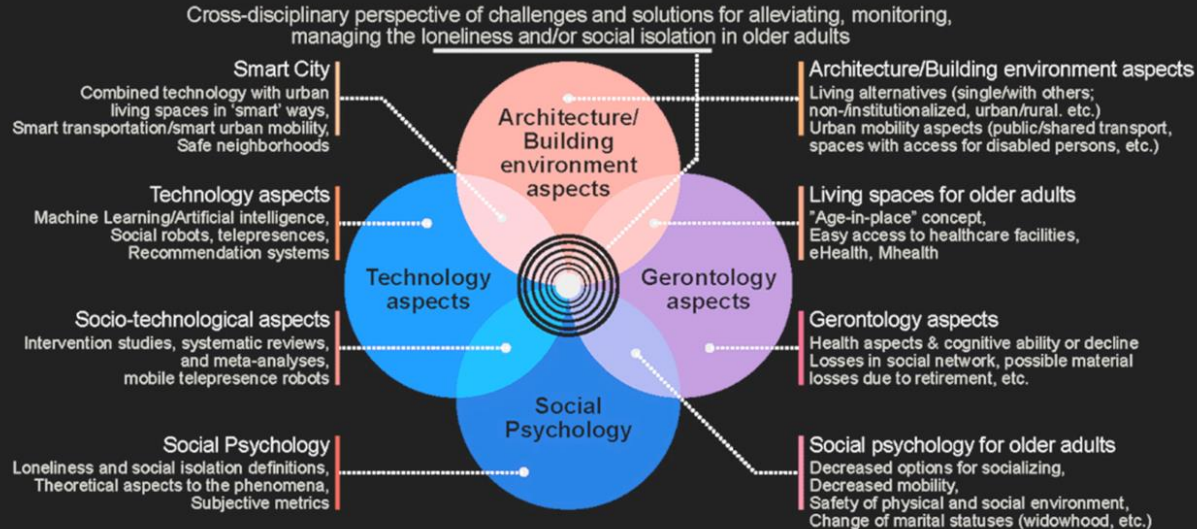
Markets  
**Stocks Undaunted by Hawkish Drumbeat Before Powell: Markets Wrap**

Business  
**Blackstone Single-Family Landlord to Halt Home Purchases in 38 Cities**

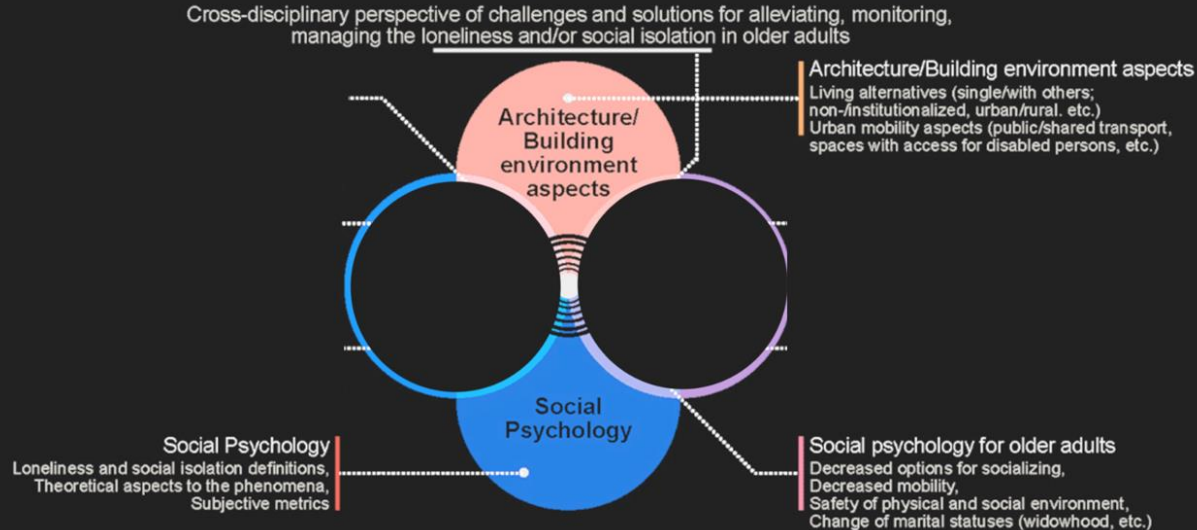
Markets  
**China Adds 1 Trillion Yuan More of Stimulus to Rescue Growth**

Source: Ministry of Town, Housing and Rural Affairs.

# Solutions that tackle loneliness



# Solutions that tackle loneliness



For example...



PRZED



PO



Spatial  
Solution



# solutions

## 2. Humanitas: Senior Care Meets Student Dorm in Shared Intergenerational Living

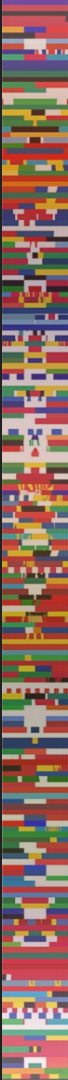


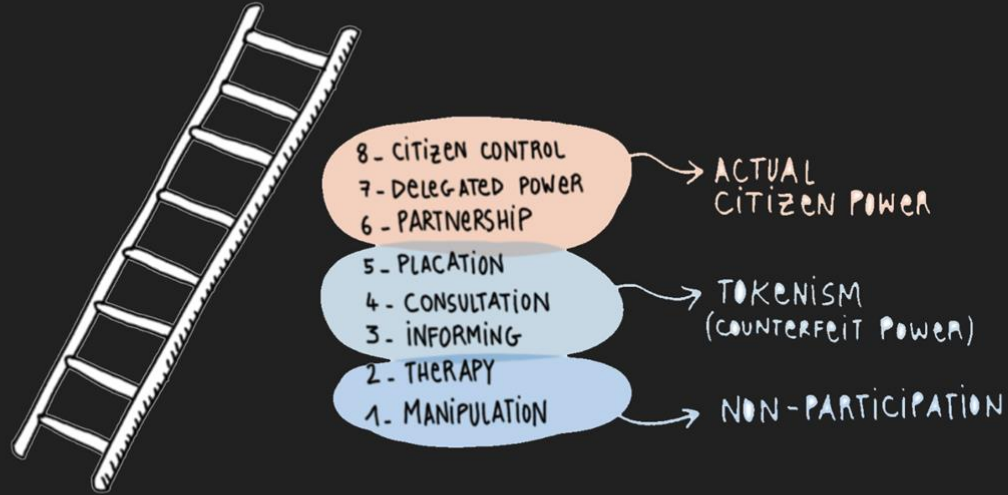
**CoAbode was founded on the principle that two single moms raising children together can achieve more than one going it alone.**

- Reduce household expenses by an average of 40%
- Gain an average of 56 additional hours per month
- Companionship and support, less social isolation and loneliness



No matter what solutions are used





ARNSTEIN'S LADDER OF CITIZEN PARTICIPATION

# Guidebook for municipalities

## *Before*

1. Choosing the neighbourhood Identifying the challenges through collaborative methods
  - community meetings, planning exercises - consider methods of inclusion (linguistic, physical accessibility etc.)
1. Plan developments/activities and establish collaborations
2. Public hearings and means for feedback
3. Plan again with feedback
4. Present to locals
5. Final feedback and considerations
6. Implement

## *After*

1. Collect feedback of new developments
1. Consider feedback for changes and improvements
1. Continue communications with local representatives



# STAKEHOLDERS

## *COMMUNITY STAKEHOLDERS*

- community-based organizations, neighborhood groups
- residents - housing organizations
- arts organizations, cultural institutions, youth organizations
- local businesses/employers

## *CITY STAKEHOLDERS*

- municipalities
- citywide businesses/employers located in the area
- arts/cultural stakeholders at the city level



# What will the city gain from the guidebook?

Citizens who participate in the shaping of their neighbourhoods

- *Which will lead to...*

A more active community

- *Which will feel...*

Less isolating and more safe

- *Which will strengthen...*

Social relations and make people more caring about their neighbourhoods and each other



Not only the **solutions**, but the **process**, will reduce loneliness



