

The Land-Sea-Act Project

“Land-sea interactions advancing Blue Growth in Baltic Sea coastal area”

Project homepage: www.land-sea.eu

Implementation: 2019 – 2021 (3 years)

Aims:

- To bring together stakeholders involved in coastal management and planning;
- To find solutions to Maritime Spatial Planning and Blue Growth challenges around the Baltic Sea;
- To elaborate Multi-level Governance Agenda on Blue Growth and Spatial Planning in Baltic Sea Region.

Project partners:

State institutions, municipalities, scientific research institutions, NGO from 6 countries

Outputs and results

<https://land-sea.eu/results/>

- The Multilevel Governance Agenda for Blue Economy and Spatial Planning in the Baltic Sea Region - guiding document.
- The 6 reports from case studies, based on various specific issues.
- Compendium of Methodologies on how to Address Land-Sea Interactions and Development Trade-offs in Coastal Areas.
- Action Plan. Entrepreneurship and the Blue Economy in the Baltic Sea Region.
- Policy brief. Promoting Multi-level government to address Land-Sea interactions.
- Synthesis about coastal governance: based on Land-Sea-Act project cases.
- Blue Growth Checks. Mapping the Blue Economy in the case study regions

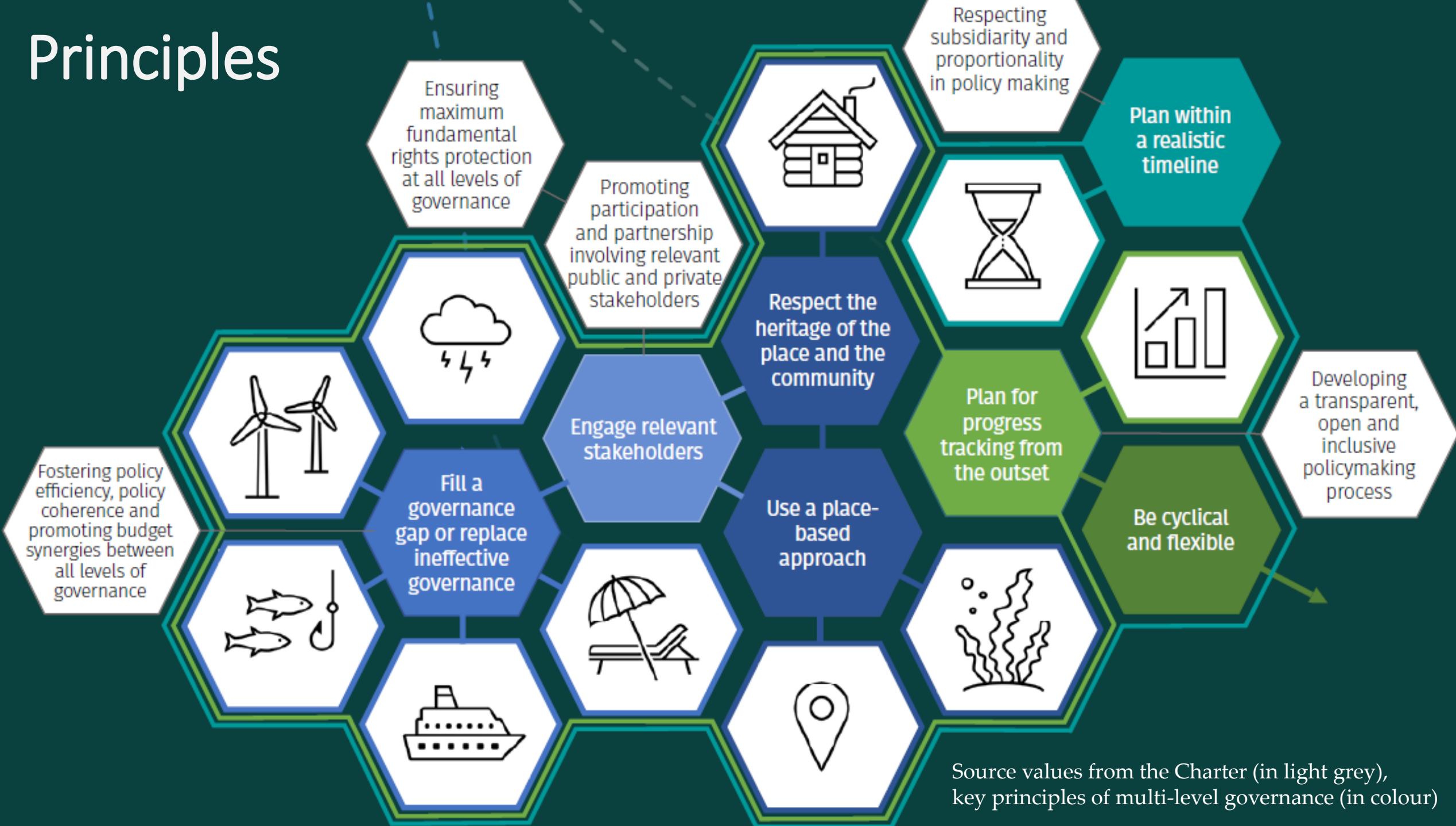
- Conference of the Land Sea Act project - [4th Baltic MSP Forum](#)
- Transnational [training on land-sea interactions](#) in spatial planning



Multilevel Governance Agenda for Blue Economy and Spatial Planning in the BSR

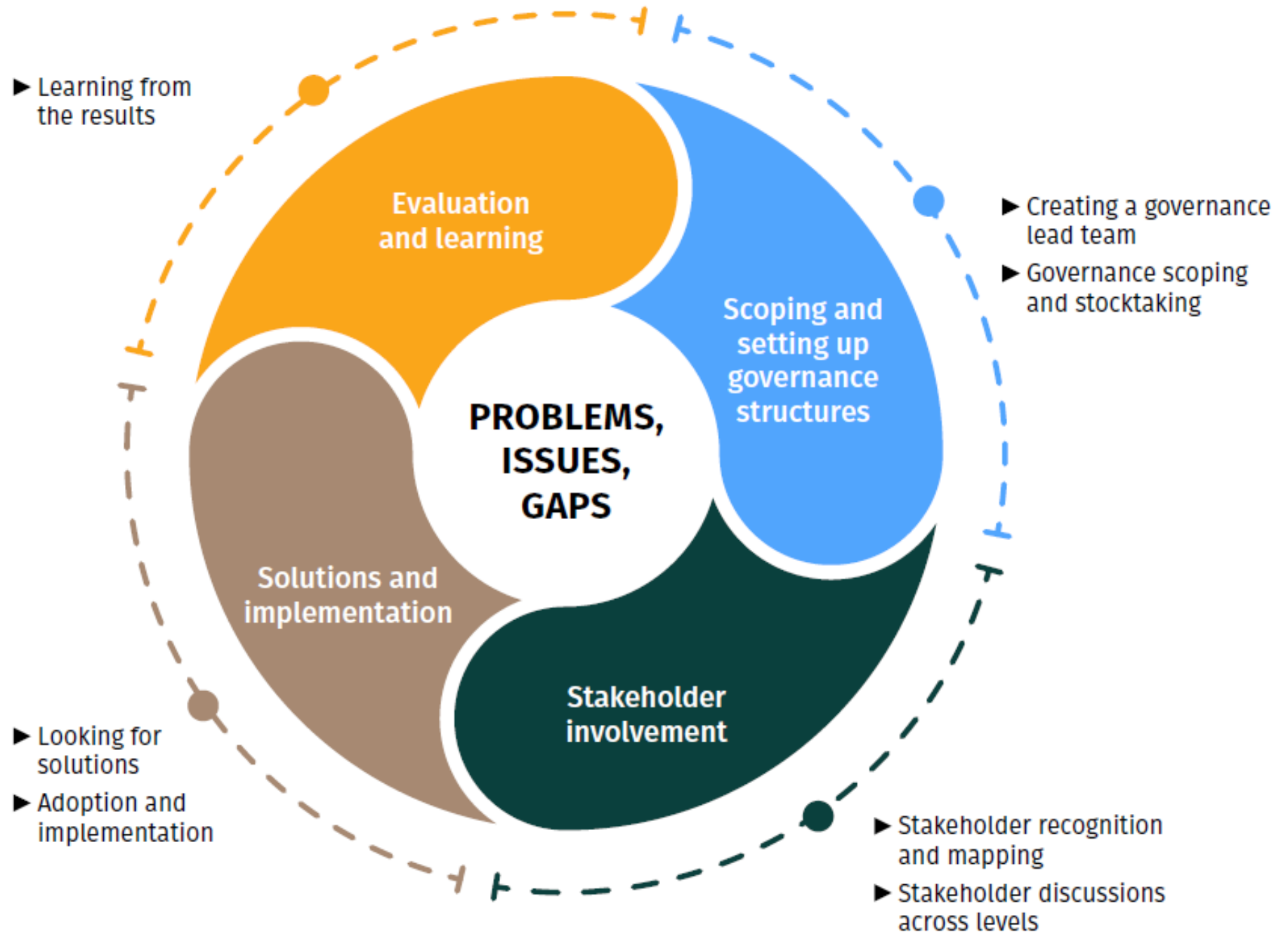


Principles



Strategic steps and actions in multi-level government process.

Framework on
HOW to slowly
improve
governance



Policy Brief

PROMOTING MULTI-LEVEL GOVERNANCE TO ADDRESS LAND-SEA INTERACTIONS

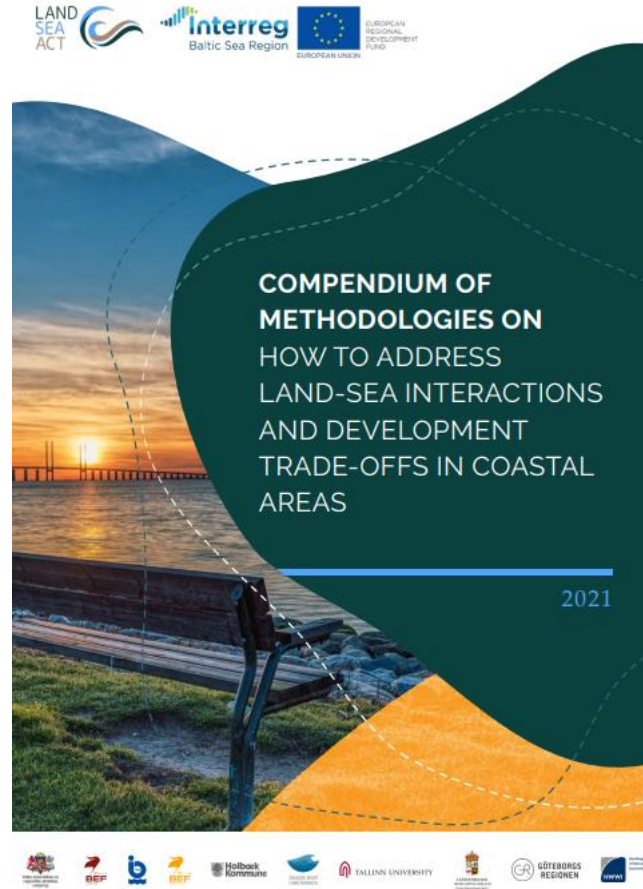
POLICY BRIEF

2021

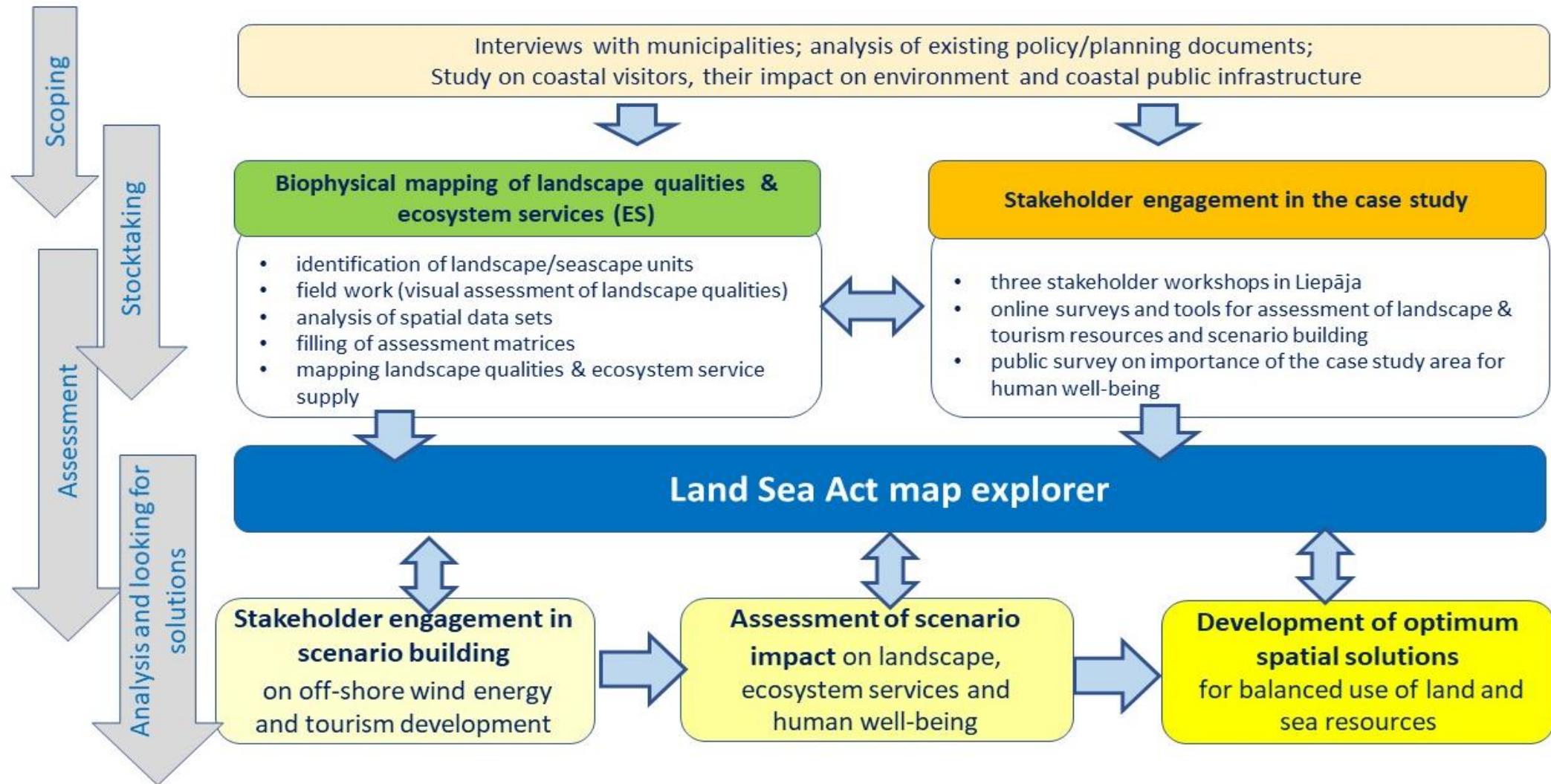
KEY MESSAGES TO POLICY MAKERS AND EXPERTS

- **ESTABLISHMENT:** coastal and marine governance should be flexible and complement the hierarchical approach through collaboration and collective decision-making.
- **COLLABORATION:** accepted and well-functioning collaboration mechanisms should ensure true engagement in the carrying out of multi-level governance.
- **IMPLEMENTATION:** accommodating the European Green Deal during the implementation of Maritime Spatial Planning and other development policies in the Baltic Sea Region requires clear guidance.
- **FOLLOW-UP:** Monitoring and evaluation of coastal and marine policies should observe how the situation in the sea affects the land and vice versa.
- **CAPACITY BUILDING:** coastal and marine governance should have continuous support through building relevant knowledge and skills of planners and other stakeholders.

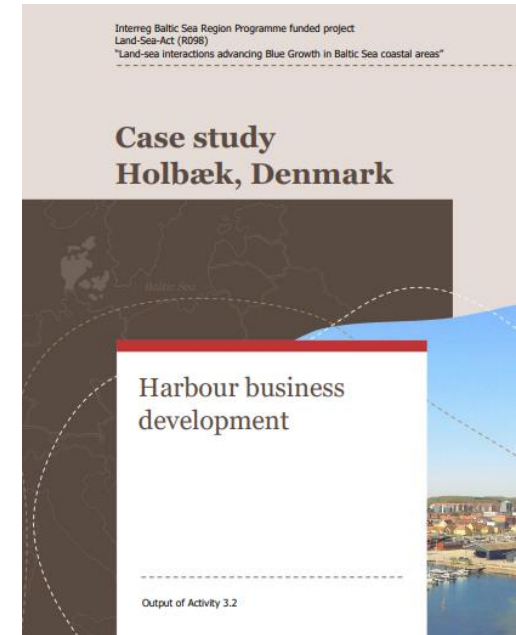
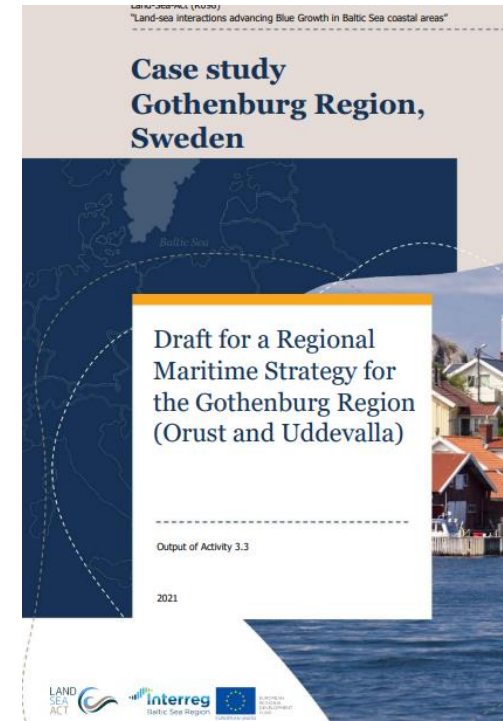
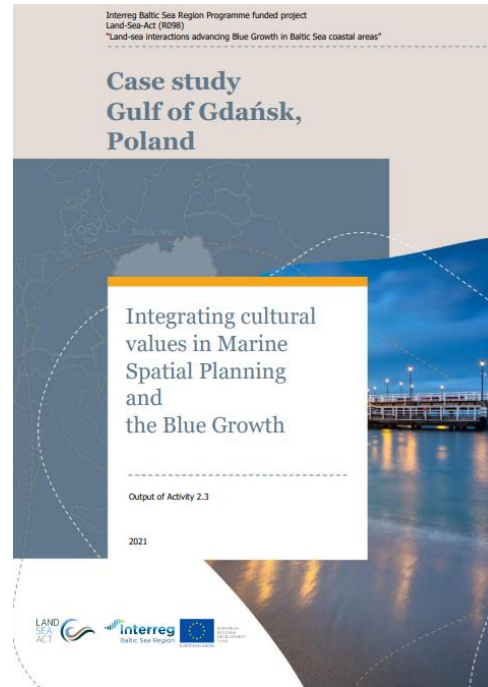
Compendium of Methodologies on How to Address Land-Sea Interactions and Development Trade-offs in Coastal Areas



Workflow of the Latvian case study in Southwestern Kurzeme



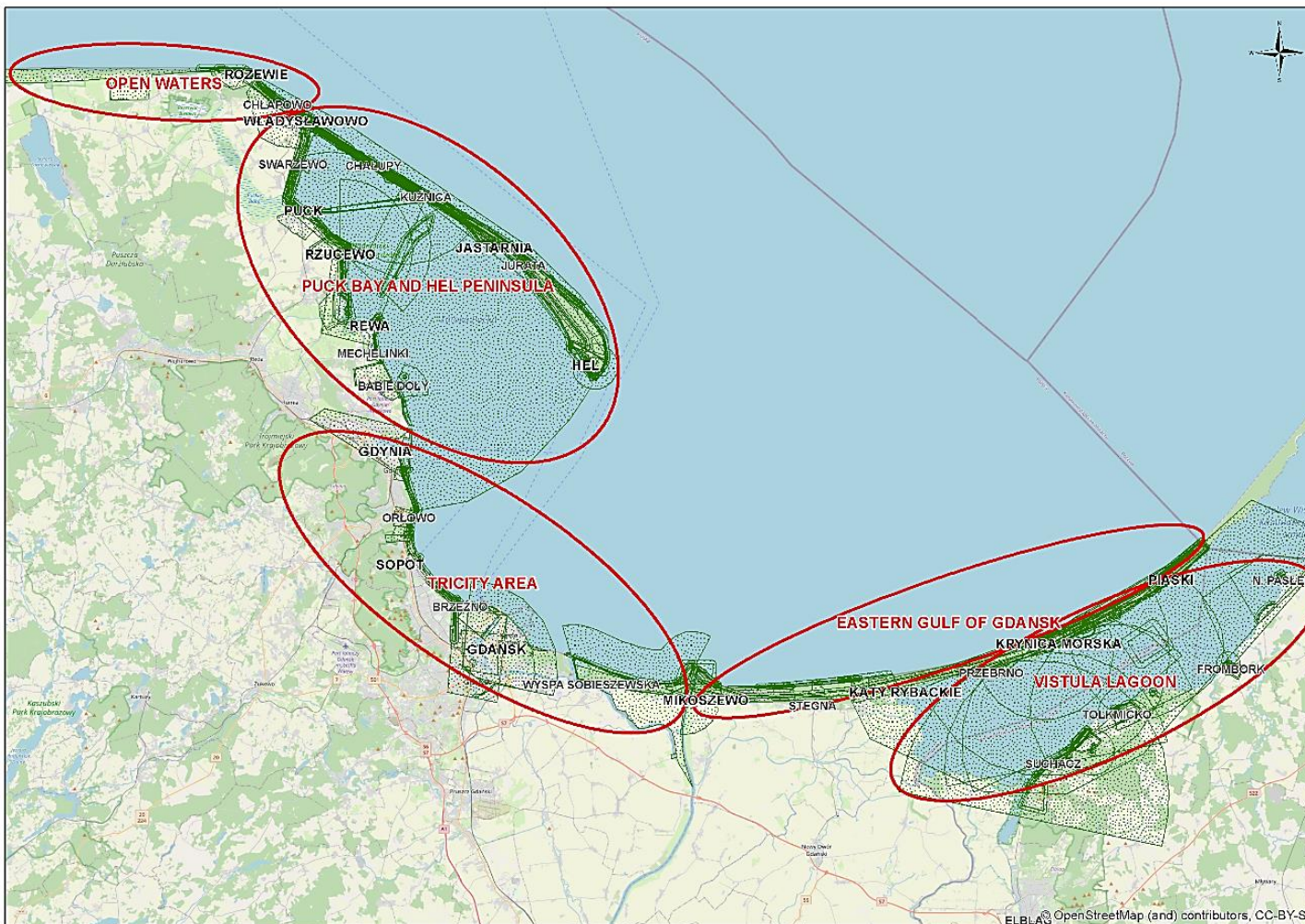
6 Case studies



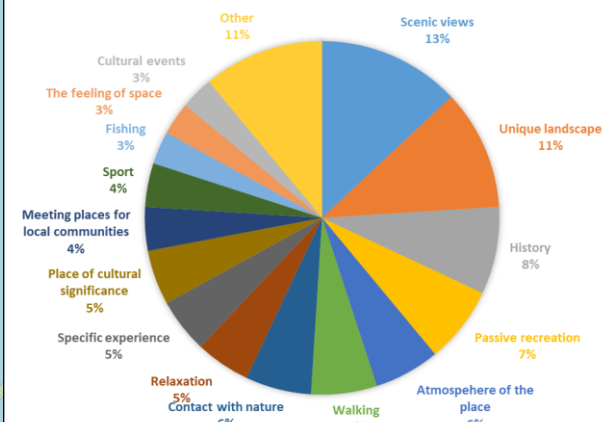
CASES



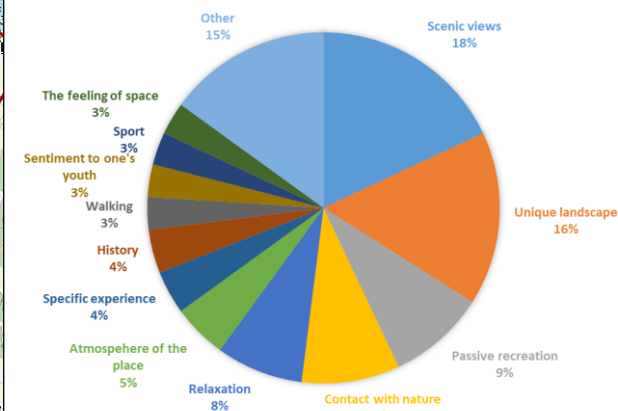
PL: Mapping clusters of culturally significant areas



VALUES ASSIGNED TO IDENTIFIED PLACES IN THE GULF OF GDAŃSK



VALUES ASSIGNED TO IDENTIFIED PLACES IN THE VISTULA LAGOON



Interreg Baltic Sea Region Programme funded project
Land-Sea-Act (R098)
"Land-sea interactions advancing Blue Growth in Baltic Sea coastal areas"

Case study Gulf of Gdańsk, Poland

Integrating cultural
values in Marine
Spatial Planning
and
the Blue Growth

Output of Activity 2.3

2021

LAND SEA ACT Interreg Baltic Sea Region

LV: Landscape assessment and getting stakeholder feedback on OWF

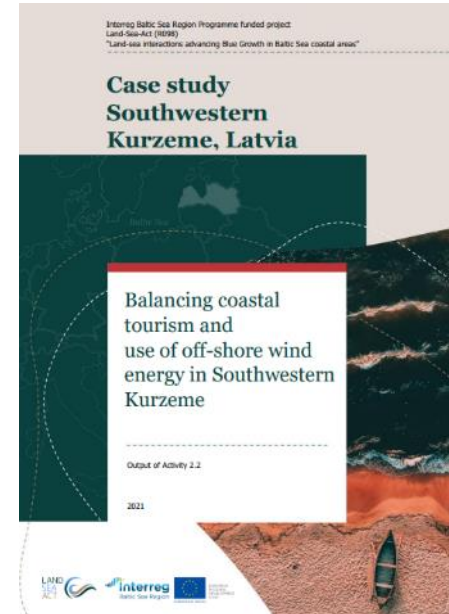
Determining of suitable areas for offshore wind parks by considering impacts on ecosystem and landscape.

Establishing of participatory approach in addressing conflicts between offshore developments and coastal interests of municipalities.

Development of strategic and spatial solutions for balancing the interests of offshore wind park and tourism development.

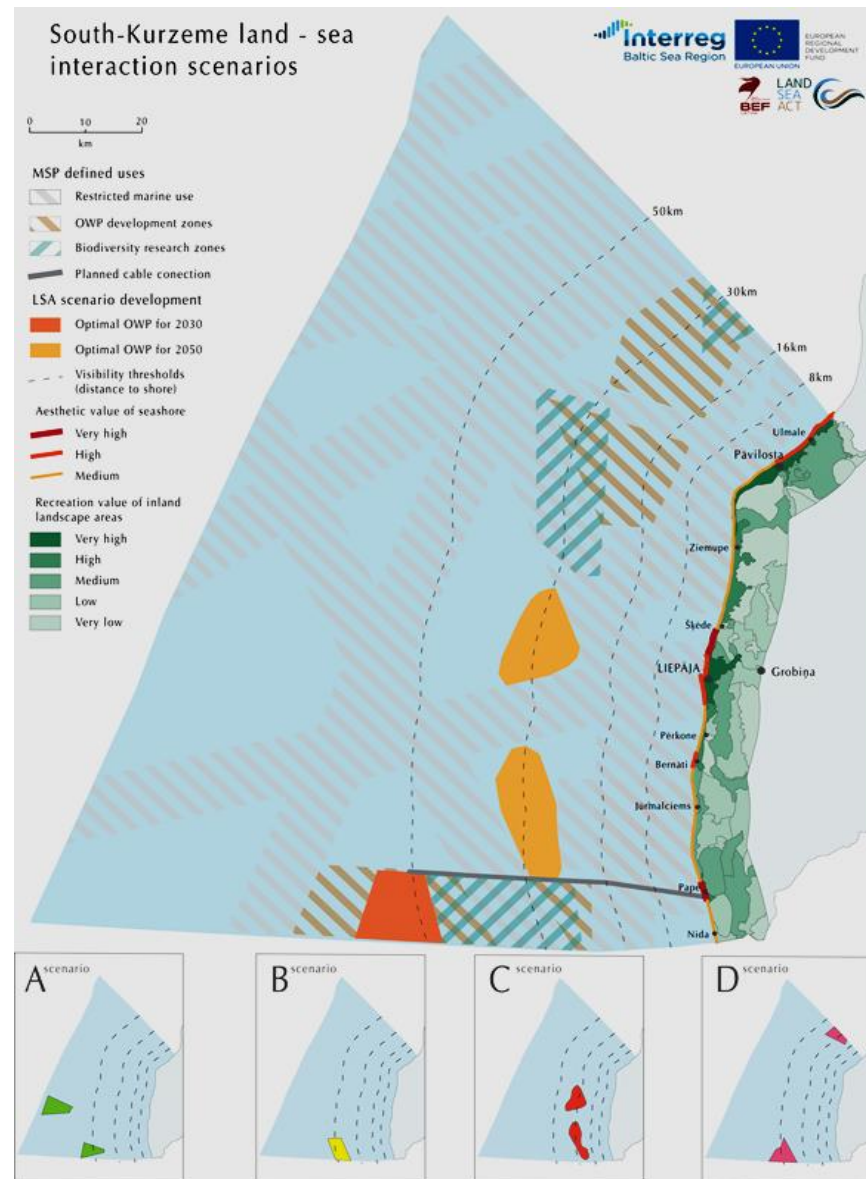
Stakeholders involved:

Ministry of Environmental Protection and Regional development, 6 municipalities, national and regional environmental & nature conservation authorities, Environmental NGO



LV: Building scenarios of coastal-marine change

South-Kurzeme land - sea interaction scenarios

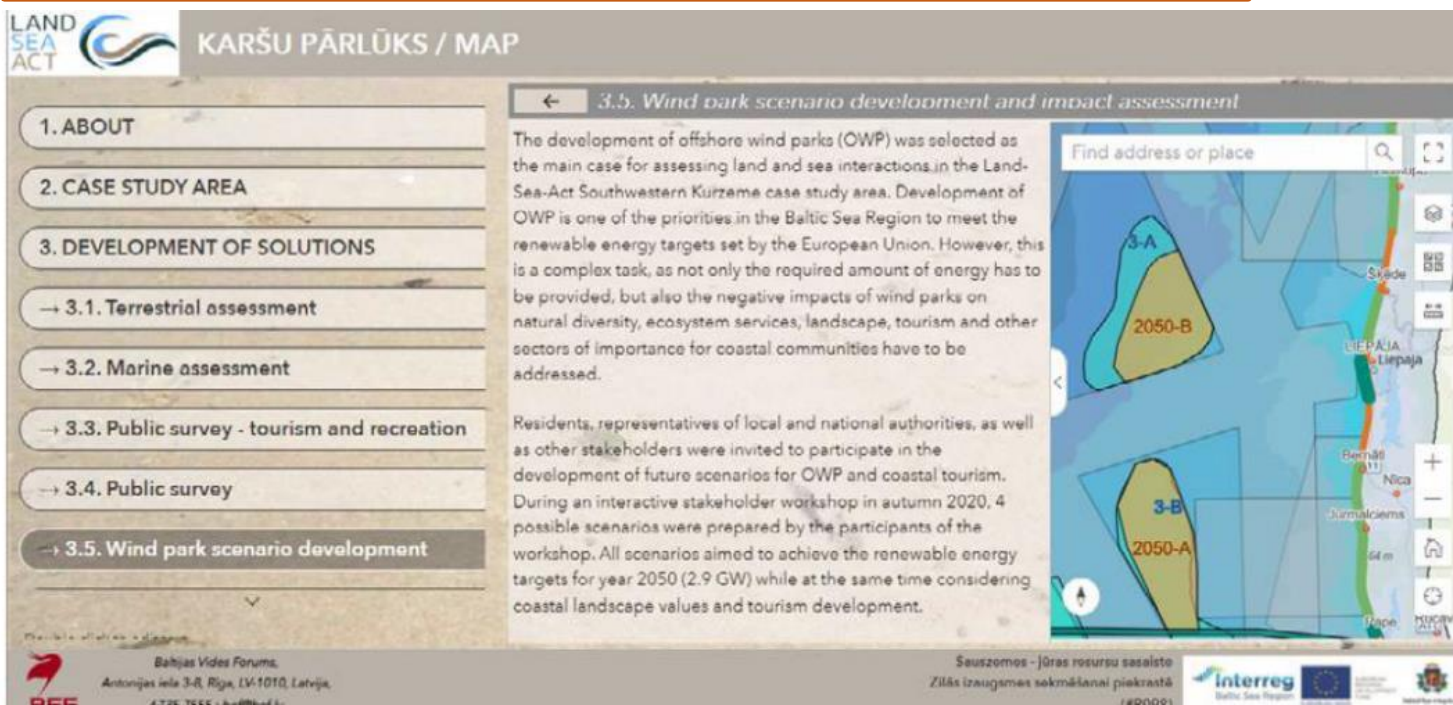


The impact of possible offshore wind farms development scenarios was analysed

- on ecosystem structure,
- ecosystem service,
- and human well-being perspectives.

Participatory GIS used, to results available in maps:

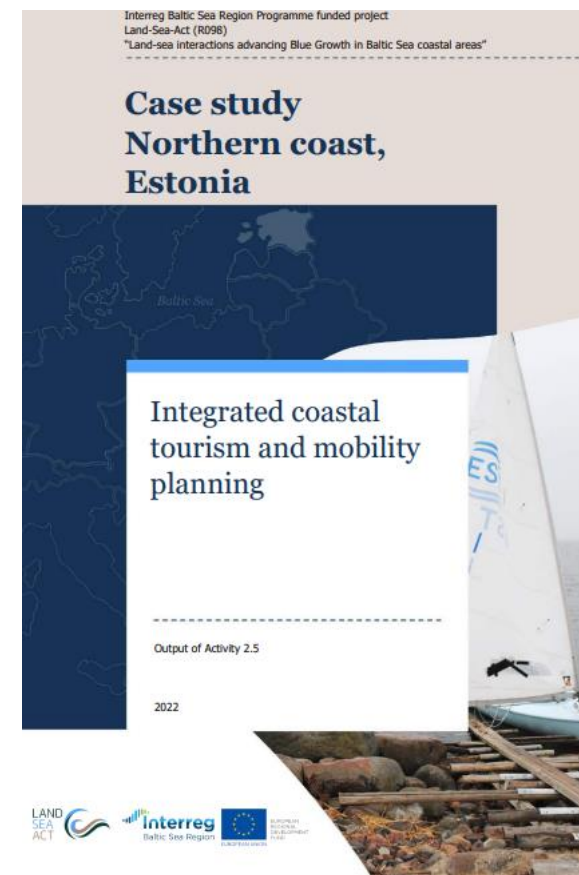
<https://experience.arcgis.com/experience/2447e76e306a4e68bf82323e33b72b26/page/ENG/>



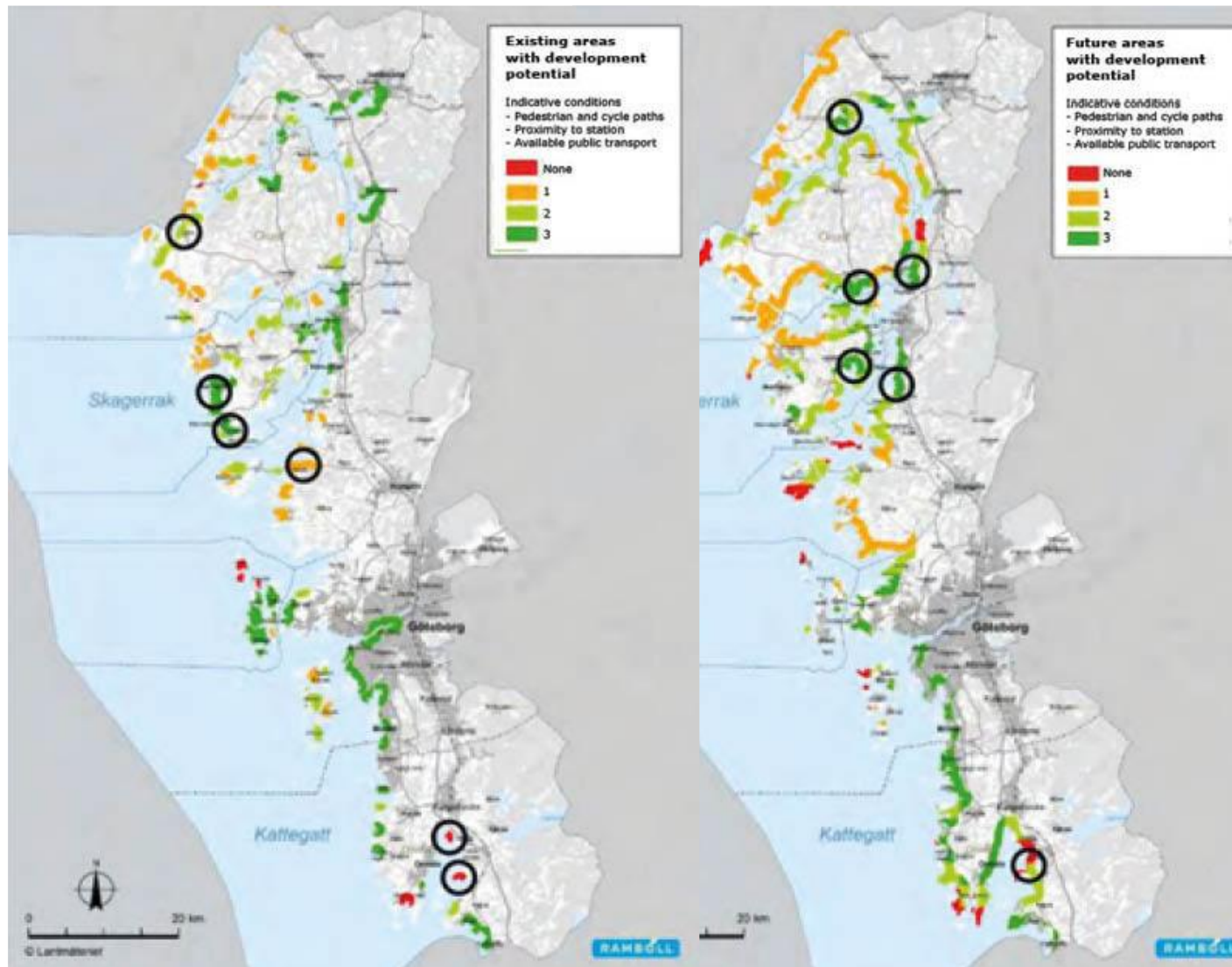
EE: 4 scenarios for integrated coastal tourism and mobility planning



Scenario building:
The artist illustrations would give a holistic perception of the landscape appearance and driving factors even without reading the paragraph concerning the respective scenario

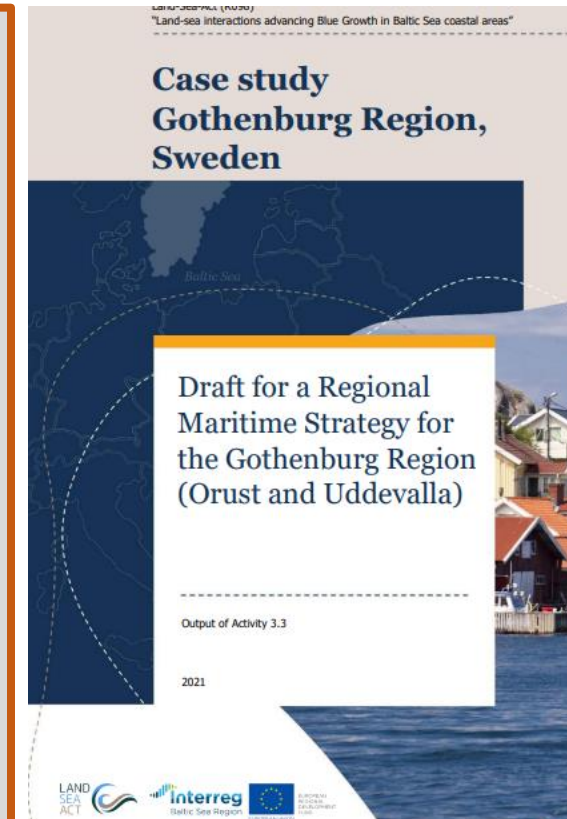


SE: Mapping of leisure and tourism business development areas






Mapping of areas with current potential for development was based on target points on the coast and created a buffer of 1 km around the points. The accessibility of these points for pedestrians, cyclists and public transport passengers was compared to identify which places could have development potential.

Mapping of sites with future development potential is the inverted version of the coastline (without mapped target points within 1 km distance), weighed against the same accessibility indicators.



DK: Development of Holbæk Port from industrial port to the active, open area

<https://land-sea-art.eu/>



EUROPEAN
REGIONAL
DEVELOPMENT
FUND

TRANSLATE SITE

WELCOME TO LAND-SEA ART CATALOGUE THE CREATORS - YOU?

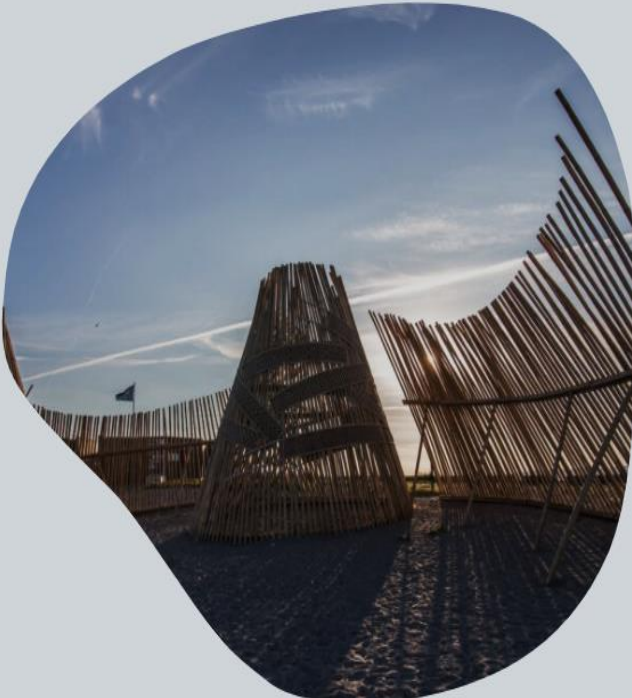
Welcome to Land-Sea Art

The interaction between land and sea has been the theme of art in various ways throughout the ages, and the visual impression will always be crucial to our perception of time and space.

On this page, we depict many artistic productions referring to the harbour-front in Holbæk, or in other ways interacting with the sea, as our dominating and ever-changing context.

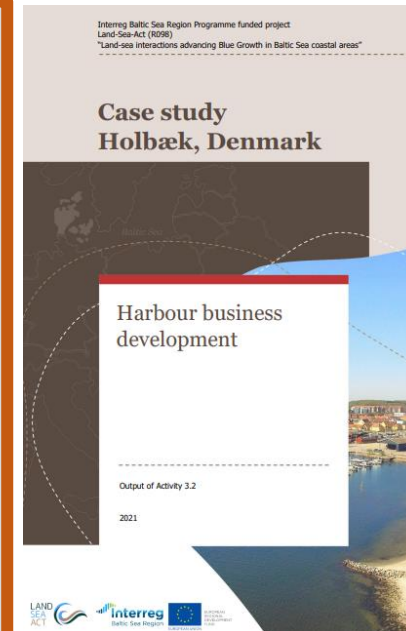
The intention of this Land-Sea Art tool is to give planners, artists, event organizers and other types of entrepreneurs input on how art can be used as a mediator to create liveliness, activities and business in the interface between land and sea. The examples portrayed are intended to demonstrate the development process, the costs, the lessons learned, etc. and the impact of the different projects. Please find these as inspiration and input for creating your own projects.

The project is funded by Interreg Baltic Sea Region. Please find further information about the Land-Sea Act project objectives and partnership at the bottom of the page.

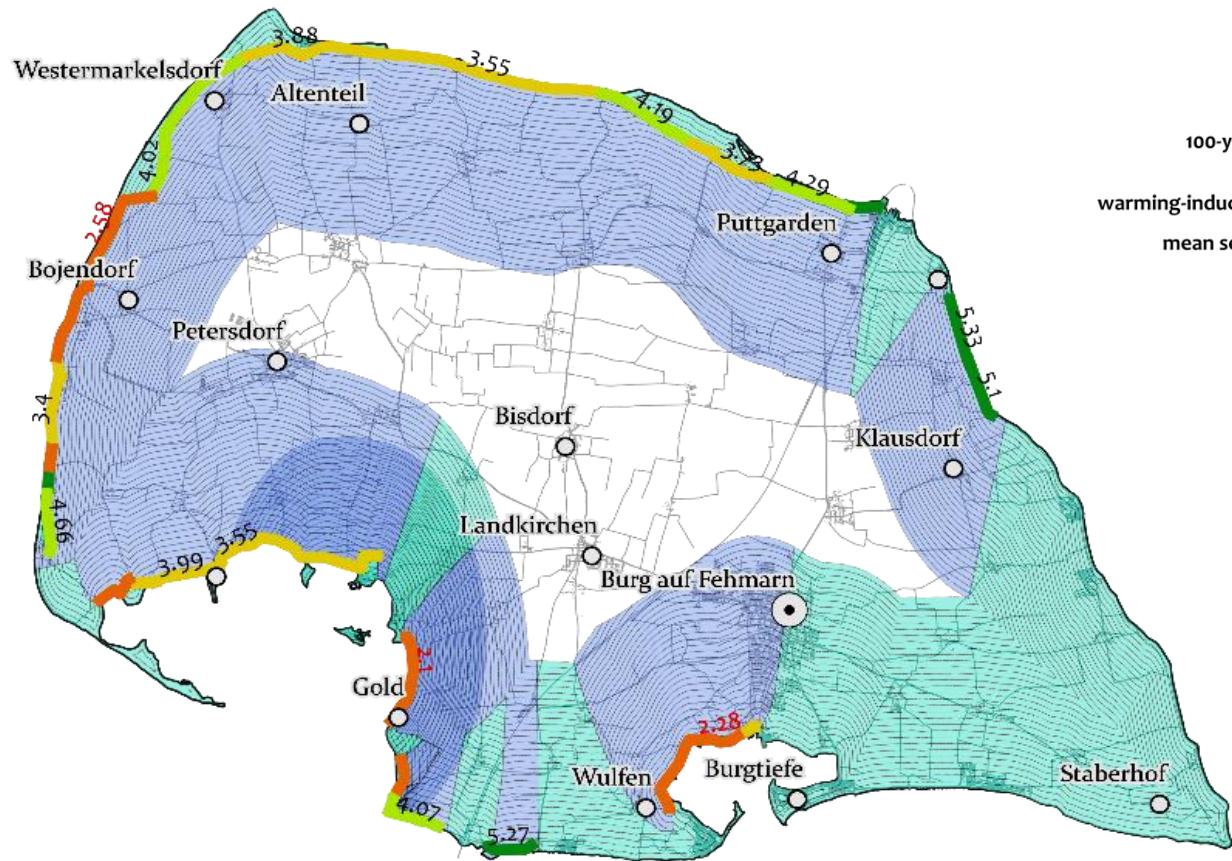


ARTIST: EKO PRAWOTO

**Land Sea Art -
an interdisciplinary
collaborative and
complex project a
with focus on
supporting the growth
of the new business
opportunities in the
harbour.**



DE: Coastal flooding simulation model for climate change adaptation



Conceptual flooding model

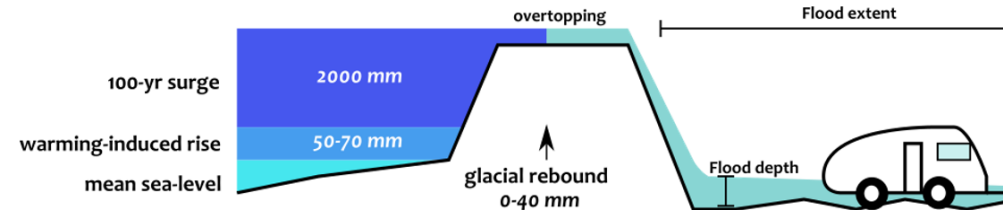


Illustration of flooding process in the established model for Fehmarn (Source: BEF)

Includes:

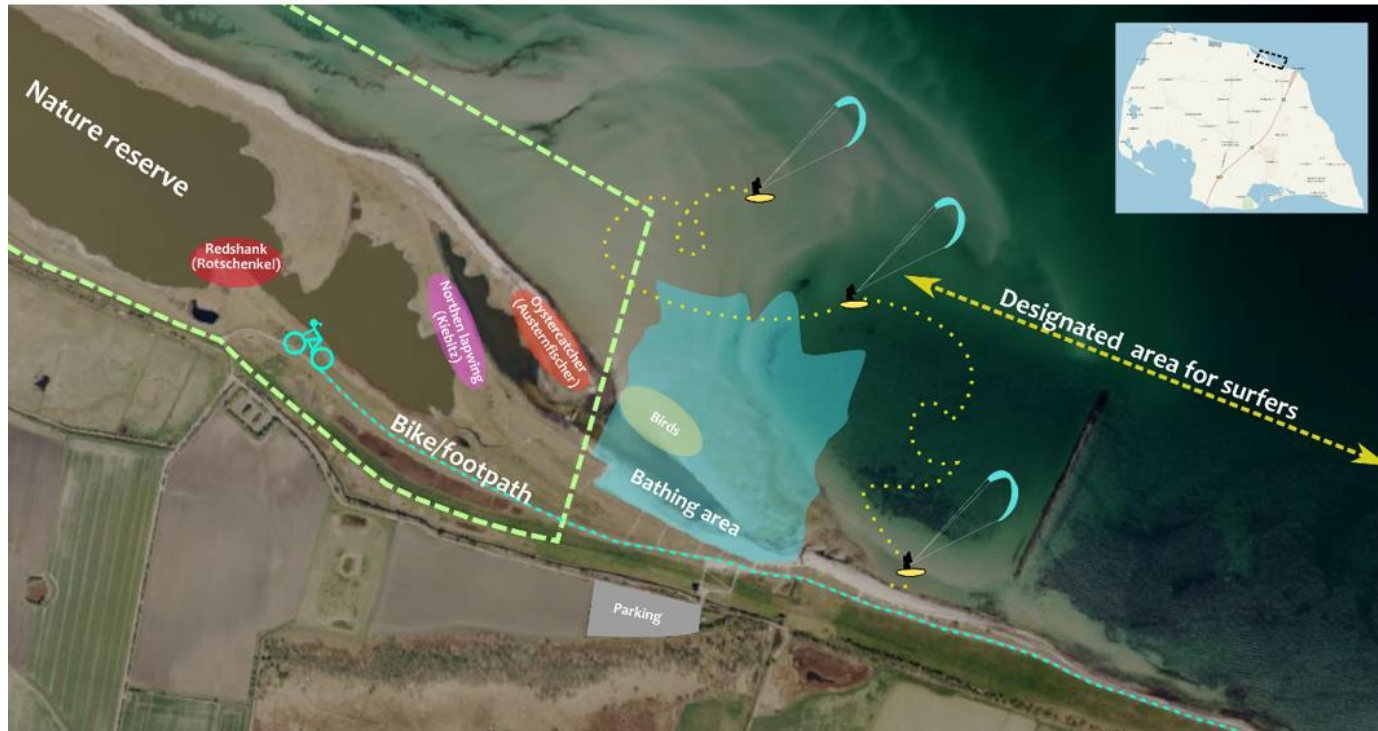
- Effect of additional sea level rise on storm surge height.
- Glacial Isostatic Adjustment.
- Physical representation (height and location) of dikes.
- Hydraulic connectivity of landscape.

Excludes:

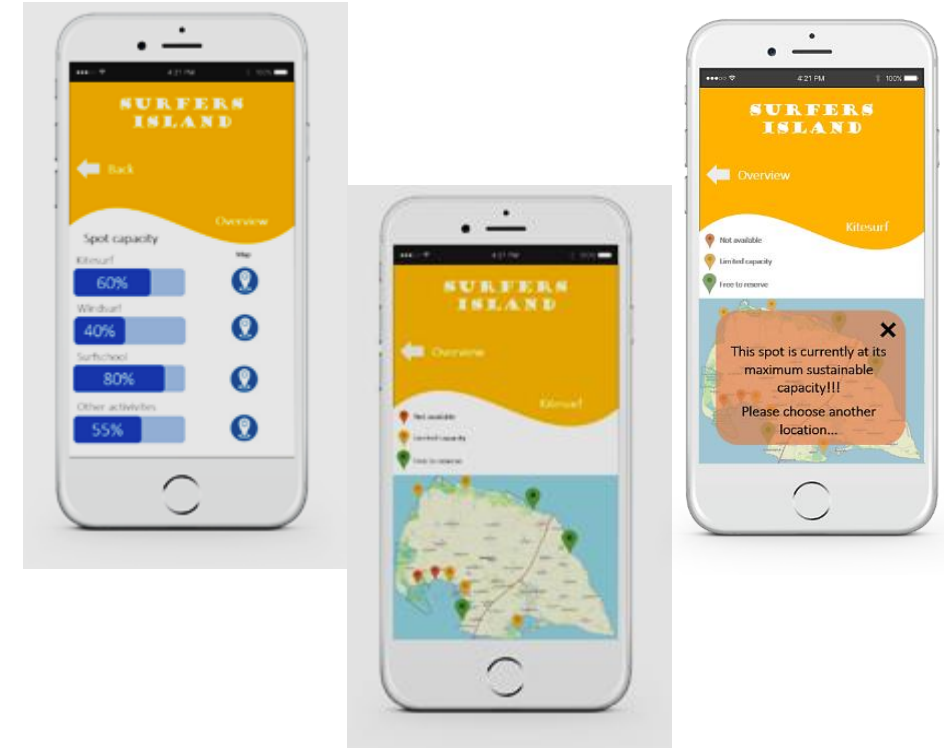
- Flood speed and intensity.
- Dike breach.



DE: Mitigation of visitor pressure on nature areas



Depiction of the spatial overlap of several coastal and blue economy activities at Gröner Brink (Source: BEF in communication with Strandpate)



Initially targeted specifically at surfers, in the future it would make more sense to have a general “parking App” for tourists and any other visitors. By completing the database with information on bus-stops and public parking spaces within the vicinity of beaches, eateries, footpaths etc. would lead to decrease the use of private transport and help avoid overcrowding of nature areas.

Possible capitalisation & dissemination of results

- **Dealing with land-sea interactions:**
 - Multi-level collaboration, simple solution – thematic working group(s)
 - Land based development and place reservation for Blue economy
 - Scale is important
 - Using new methods to support planning/development
 - Using new data gathering methods, including PGIS
- **All outputs are published and available:** <https://land-sea.eu/results/>
- **Multilevel Governance Agenda** and other project materials should be popularized in BSR countries and translated, if necessary

Thank you!

Project homepage: www.land-sea.eu

martins.grels@varam.gov.lv