



Vision

VASAB 2040

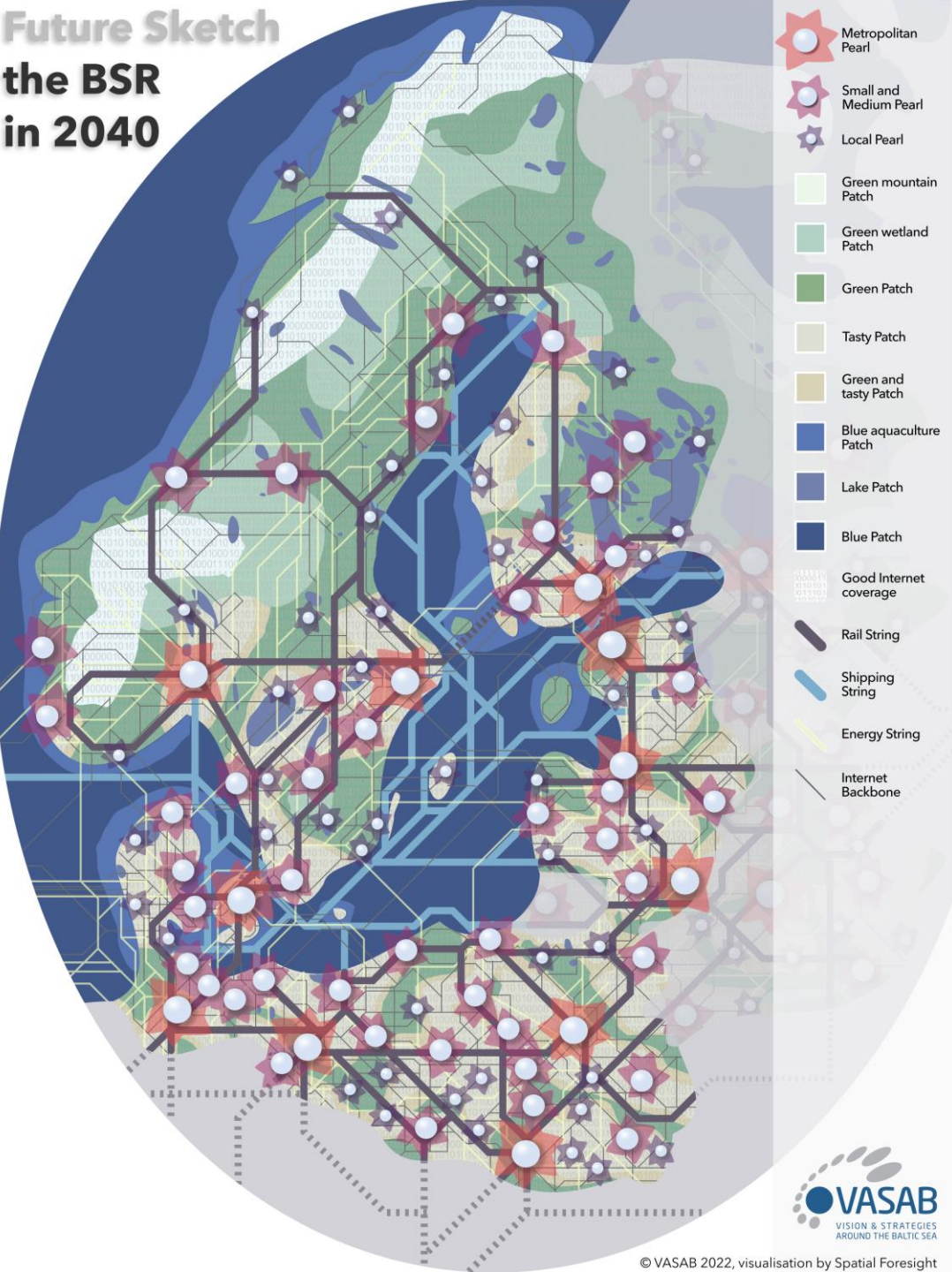
Kai Böhme, Spatial Foresight

Luciane Aguiar Borges, Nordregio

1 June 2023 - Wismar, Germany

Expert's Conference on the VASAB Vision 2040

Future Sketch the BSR in 2040



A Baltic Sea Region for the next generations

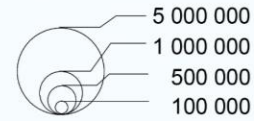
- A diversified and fresh Baltic Sea Region
- Vibrant *pearls* of all sizes
- Well-connected *strings* between people and places
- Resilient *patches* of ecosystems and unique areas at sea and land
- Cooperative sea and land planning *systems*

Pearls today

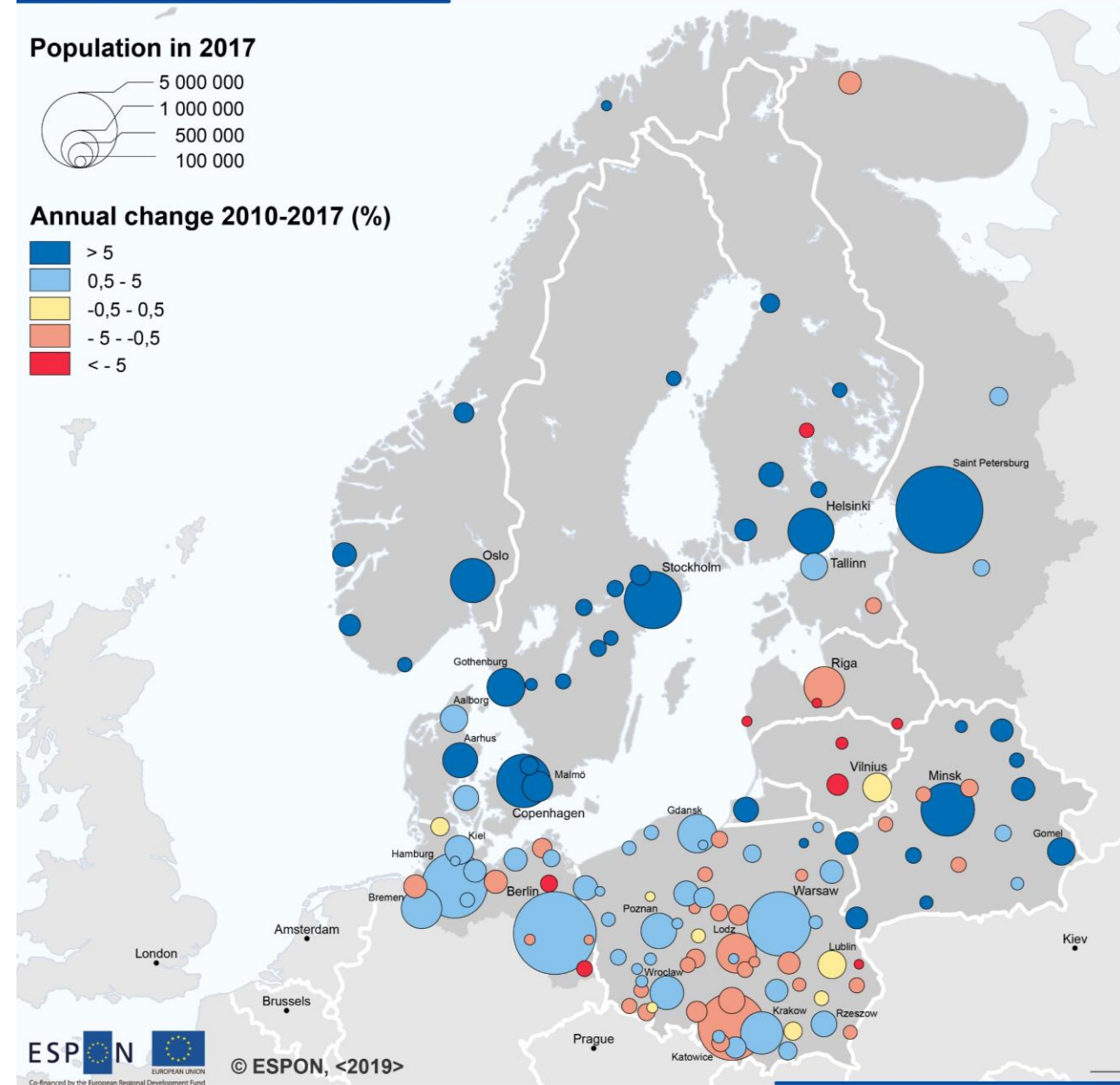
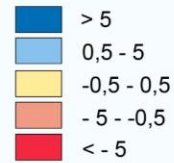
- Uneven distribution of population
- 63% of the population lives in 135 FUAs
- Outmigration in the eastern part of the Baltic Sea Region

Population size in Functional Urban Areas

Population in 2017



Annual change 2010-2017 (%)





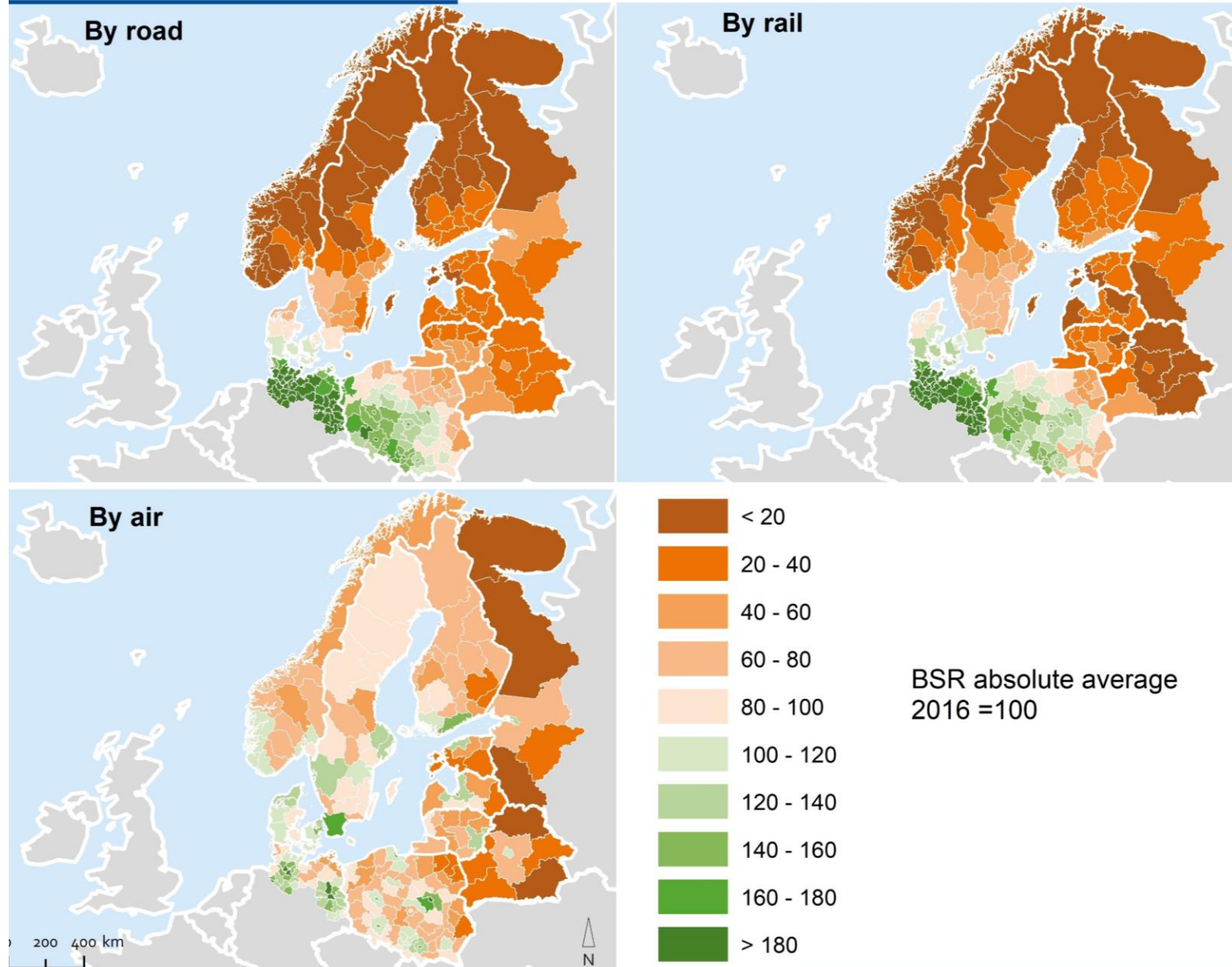
Pearls 2040

By 2040 all places, rural areas, small and medium-sized towns, cities and metropolitan areas offer high quality of life, building on their own comparative advantages and complementarities and being well networked with and across each other.

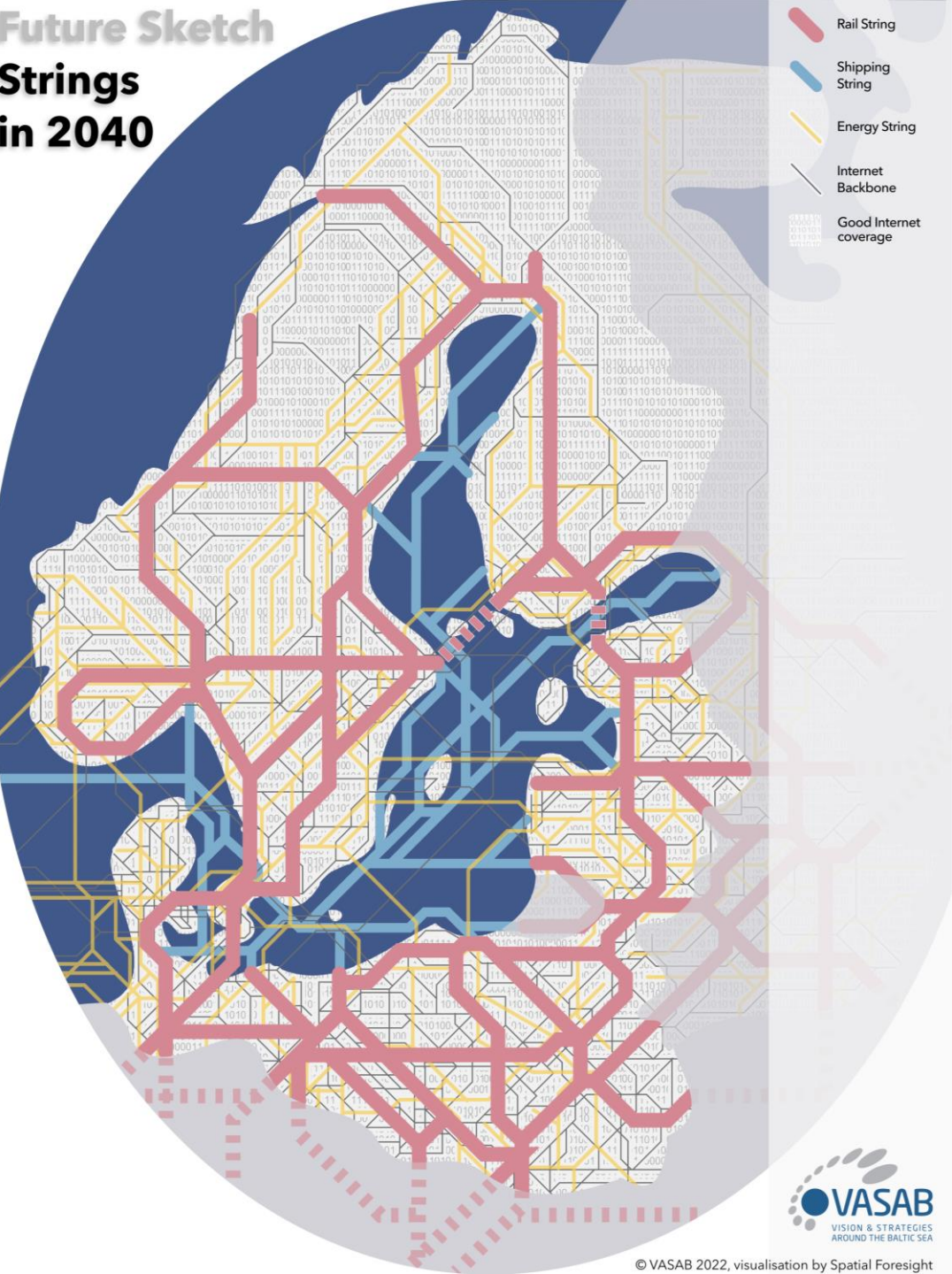
Strings today

- Higher road & rail accessibility and intense sea traffic in the Southern part
- Great access to broadband in the entire BSR
- Few Eastern and Western connections when it comes to energy

Accessibility potential in 2016



Future Sketch Strings in 2040



Strings 2040

By 2040 the rail, road, maritime and virtual connectivity for both goods and people is green, efficient, safe, reliable and affordable all over the Baltic Sea Region.

By 2040 energy production is carbon neutral, secure, decentralised and well-connected throughout the Baltic Sea Region.

Patches today

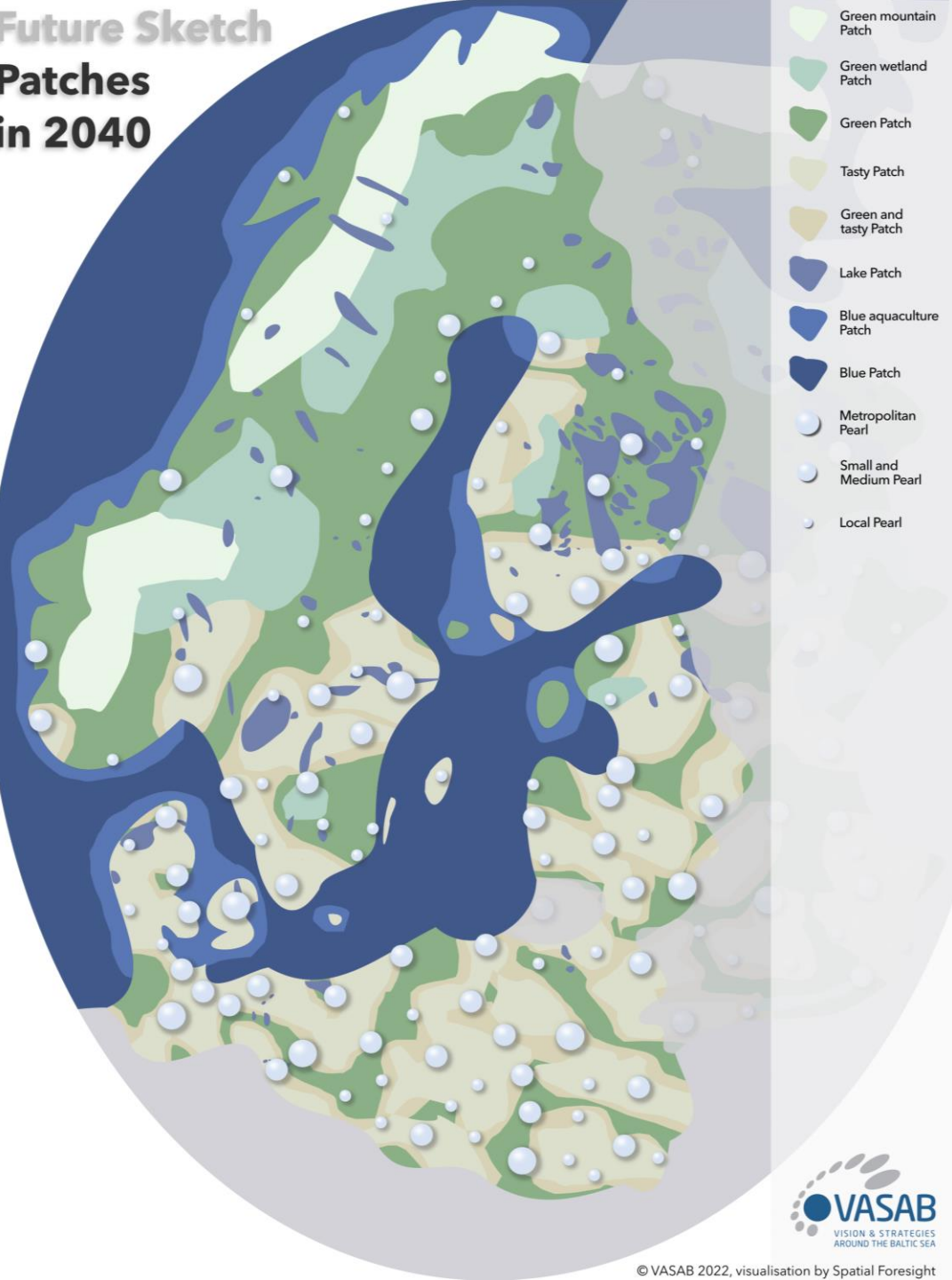
- 57.5% increase in the area of urban land cover (less than 1% of the total land cover of the region)
- Decrease in forest land but still an outstanding share
- High eutrophication of the Baltic Sea

Land cover in the Baltic sea region, 2019

Contains modified Copernicus Climate Change Service information [2019]



Future Sketch Patches in 2040



Patches 2040

By 2040 the terrestrial and maritime environment has high levels of biodiversity, resilient ecosystems and overall a healthy nature all over the Baltic Sea Region.

Systems today

- Different locus of responsibilities of MSP in the different sea areas;
- BSR is a frontrunner in MSP
- Solid governance structure (formal and informal networks)



Future Sketch Systems in 2040

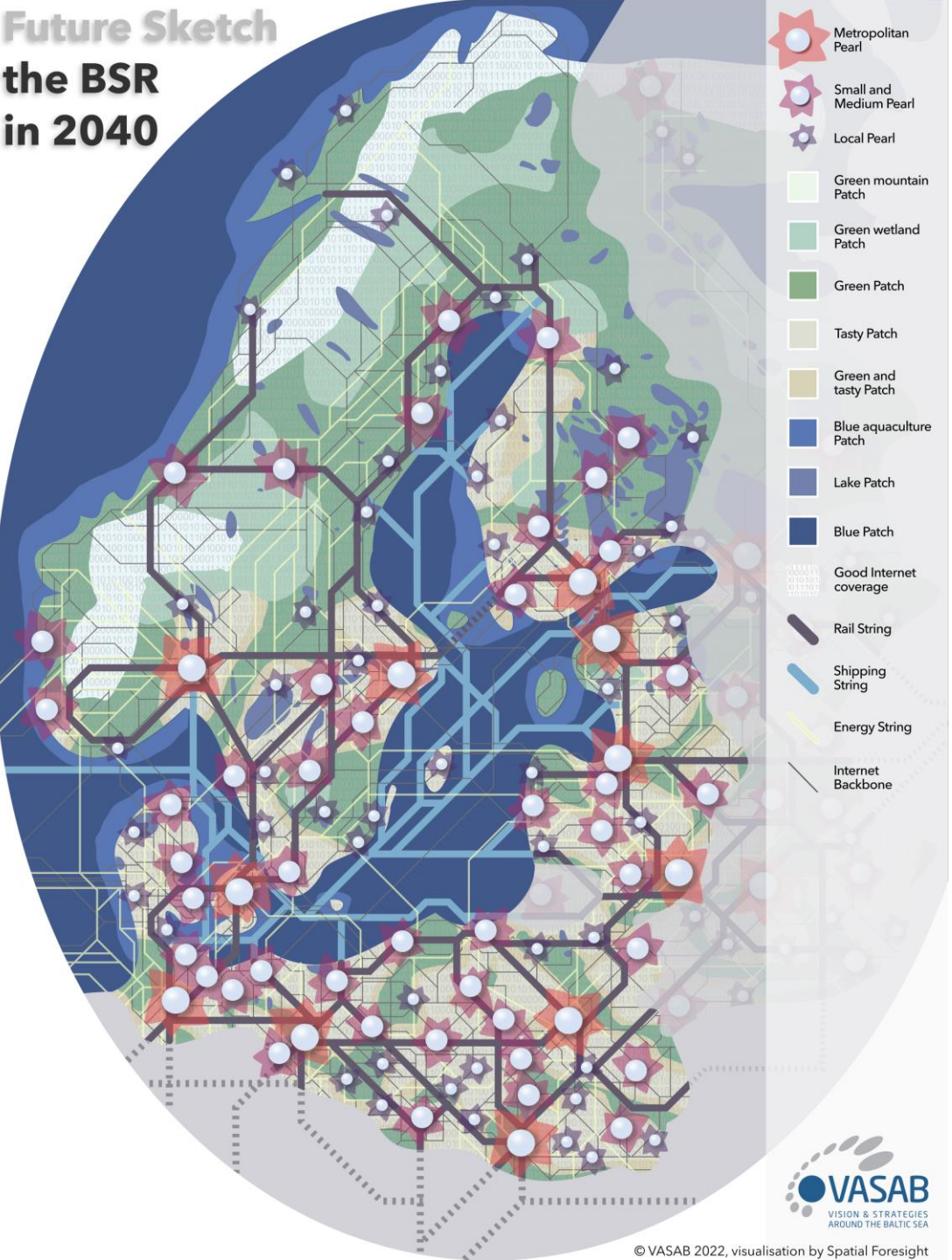


Systems 2040

By 2040 the various relevant planning systems communicate smoothly across countries, sectors and levels of governance.

Planning systems are efficient, interoperable and communicate smoothly across systems on relevant developments, observations, measures and objectives.

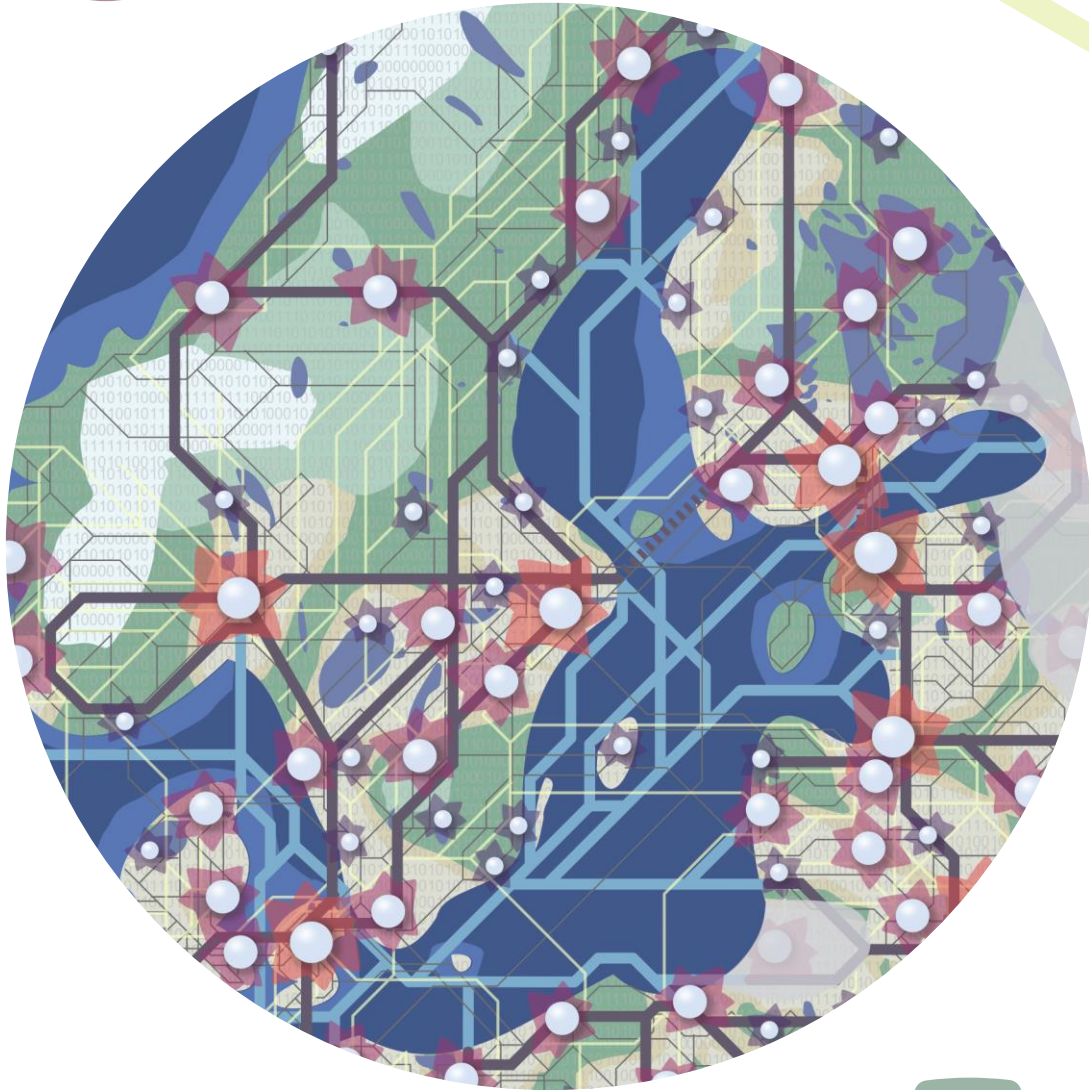
Future Sketch the BSR in 2040



A Baltic Sea Region for the next generations

- A diversified and fresh Baltic Sea Region
- Vibrant *pearls* of all sizes
- Well-connected *strings* between people and places
- Resilient *patches* of ecosystems and unique areas at sea and land
- Cooperative sea and land planning *systems*





Thank you!

Kai Böhme
Spatial Foresight

kai.boehme@spatialforesight.eu

www.spatialforesight.eu

Luciane Aguiar Borges
Nordregio

luciane.aguiar.borges@nordregio.org

www.nordregio.org

1 June 2023 - Wismar, Germany

Expert's Conference on the VASAB Vision 2040