

# Spatial dynamics in the Baltic Sea Region.

Dr Wiktor Szydarowski



# Spatial megatrends



## Space of places

Territorial fragmentation driven by forces of **d**iscontent, **d**ivision, **d**isparities and **d**ivides

Source: ESPON European Territorial Reference Framework project

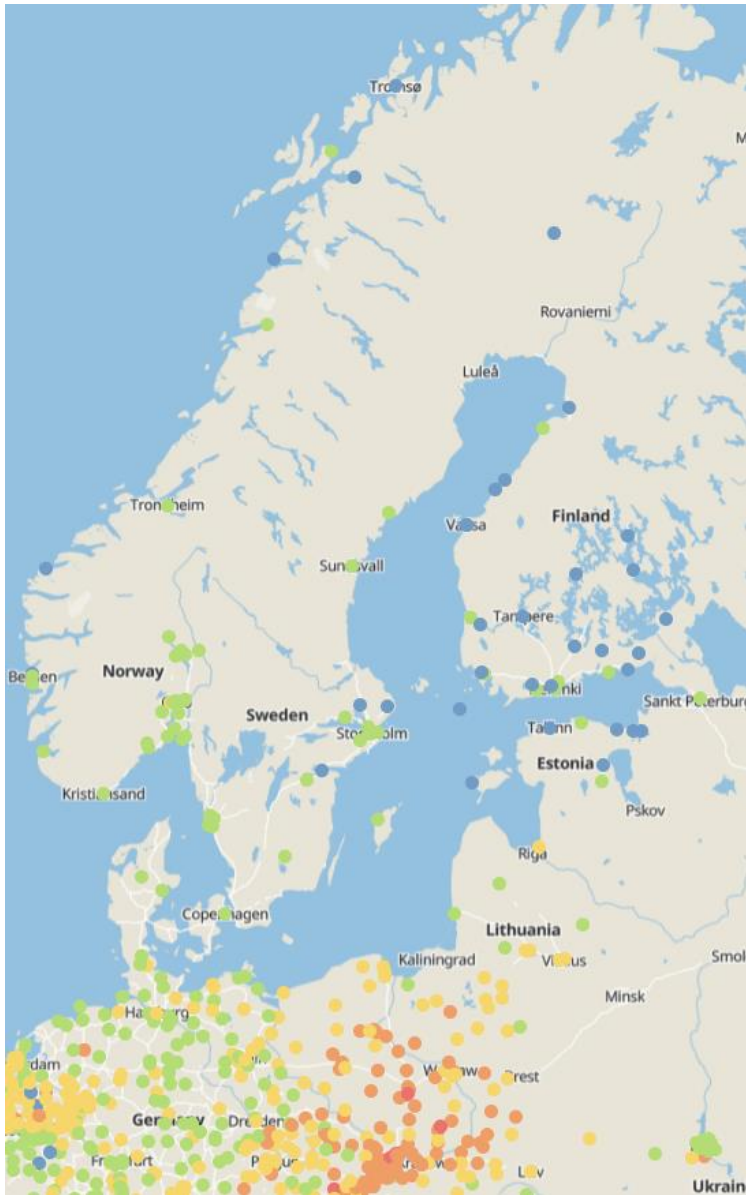
## The 4 'Ds'



## Space of flows

Subverted distances, proximity to hubs & nodes, increasing spillovers and externalities, new network geographies (e.g., global digital markets)

# The air quality divide



## Interactive global map of 2022 PM2.5 concentrations by city

Source: <https://www.iqair.com/world-air-quality-report>



**Julian Popov**  
@julianpopov



Europe is divided by the air we breath in the East and the West. When we talk about the future of Europe we cannot ignore the air quality divide.



8:42 AM · Jan 28, 2018



[Read the full conversation on Twitter](#)



1.6K



Reply



Share

# A new 'Iron Curtain', *in statu nascendi*...



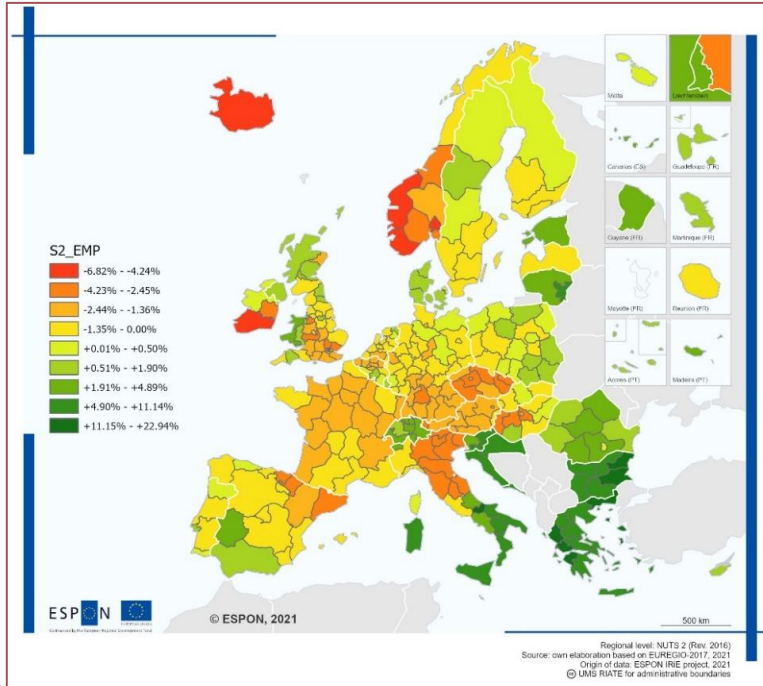
Source:  
<https://edition.cnn.com/videos/world/2022/02/25/ukraine-russia-new-iron-curtain-tsr-king-vpx.cnn>



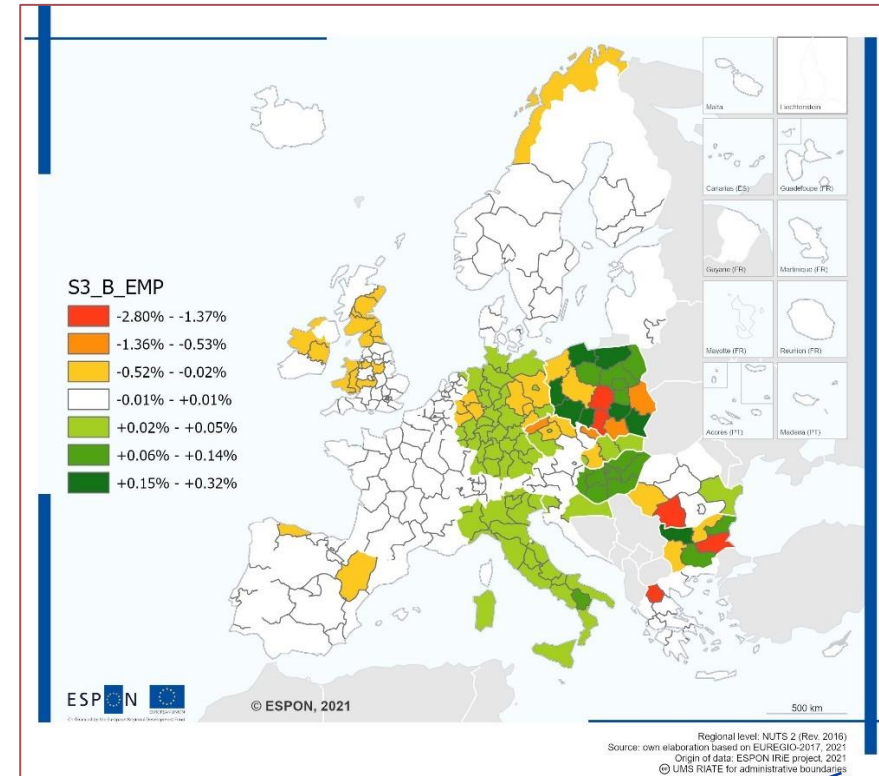
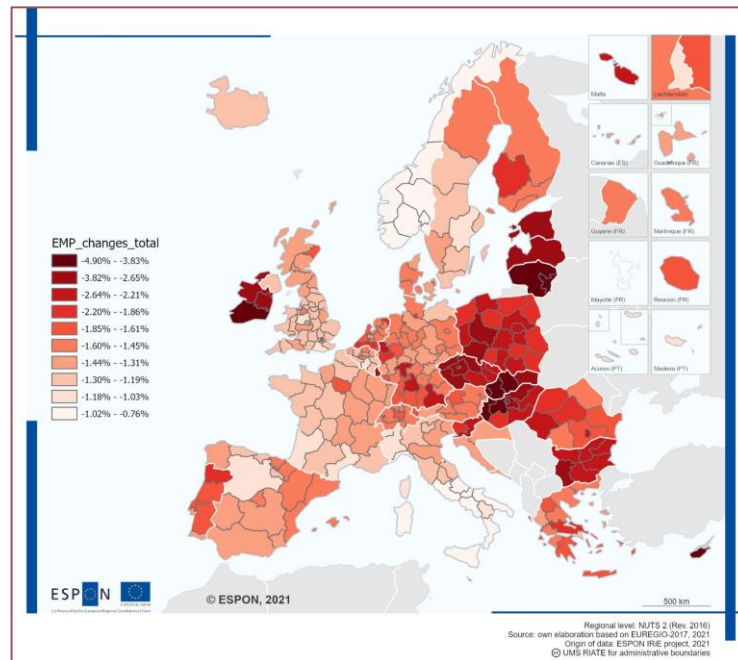
# Overlapping and coinciding shocks...

## Effects in terms of employment (%)

Source: ESPON IRIE project

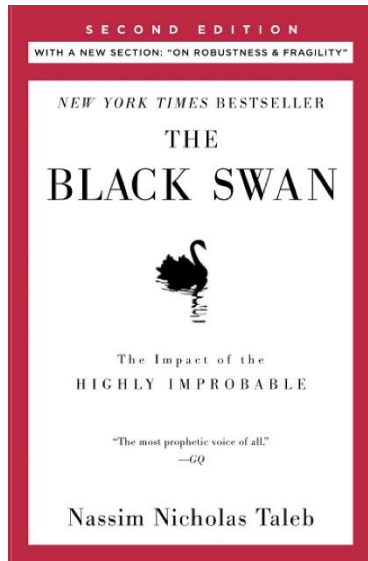


**WAR**



**CLIMATE CHANGE**

# Economic, social, territorial cohesion post-2022?



Source: <https://www.thegreenage.co.uk/why-are-energy-bills-rising-uk/>

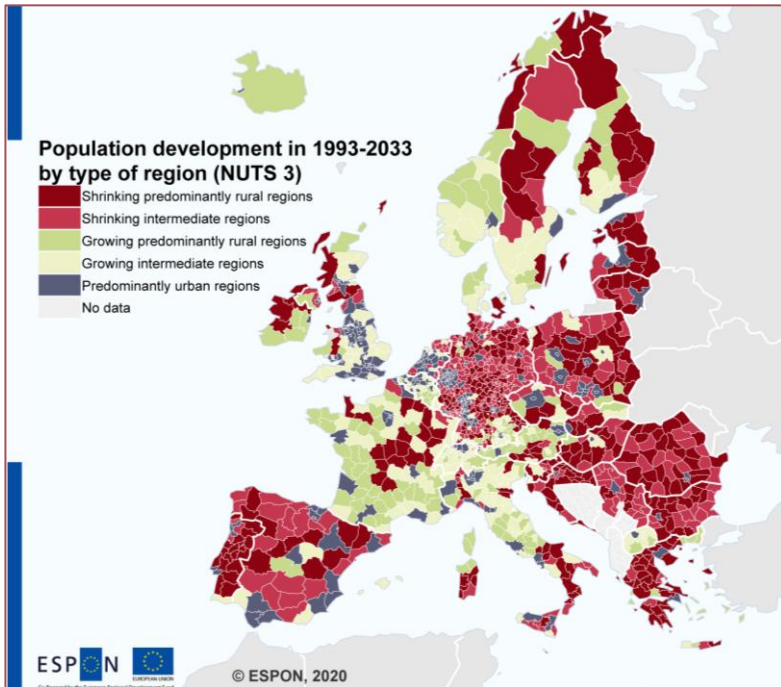


Source: <https://time.com/6150856/ukraine-refugees-russia-invasion-preparation/>

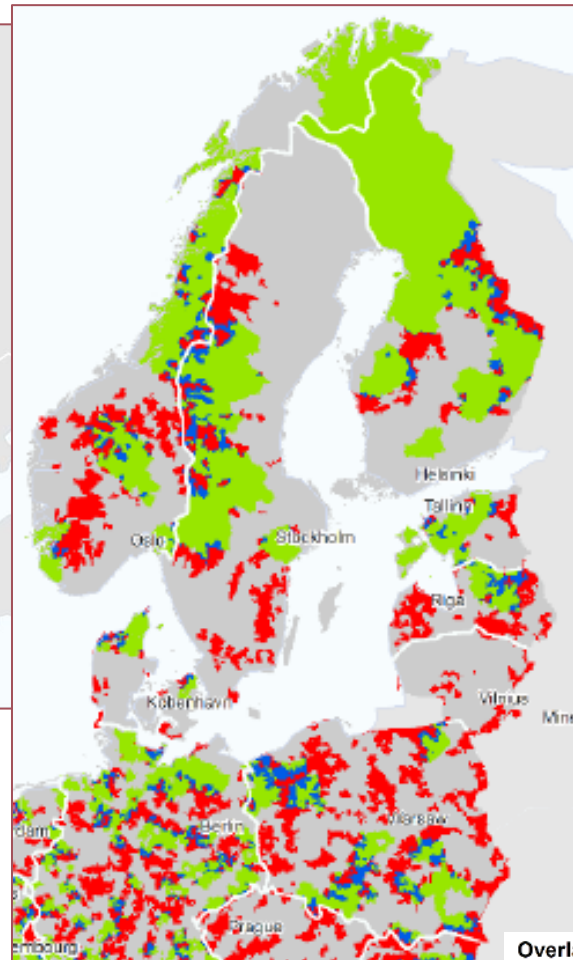


Source: <https://voxeurop.eu/en/the-new-iron-curtain/>

# Vulnerability and exposure to hazards



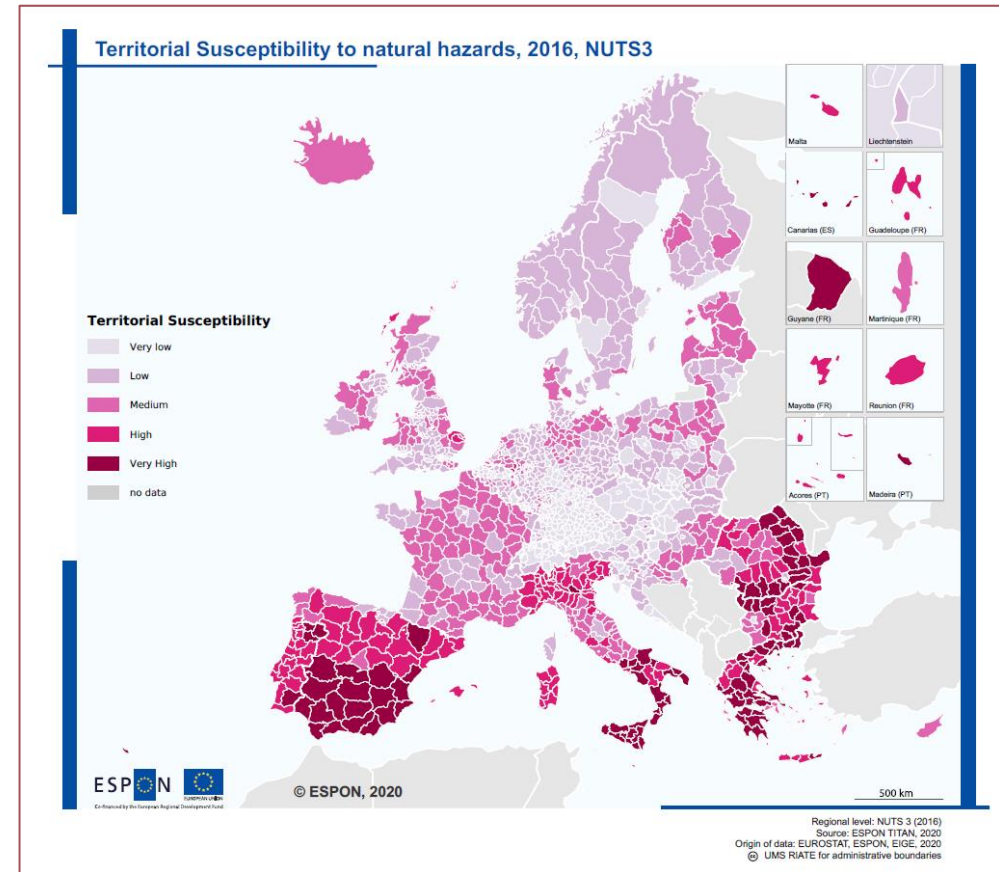
Source: ESPON ESCAPE project



Source: ESPON PROPHECY project

**Overlay of results of the four individual delineations:  
Main drivers of inner peripherality  
(lack of access vs. economic and demographic situation)**

- non-IP area
- Main driver: poor economic potentials and poor socio-economic situation
- Main driver: lack of access to centres and/or services
- Main drivers: poor accessibility and poor economic potentials/poor socio-economic situation



Source: ESPON TITAN project

# In pursuit of territorial resilience

- Understand trends
- Brace for future shocks
- Build positive narrative around demographic shrinkage
- Target inner peripheries to help their cities and towns develop equitable public services
- Untap territorial capitals, combine skills and capacities, create alliances
- Coordinate adaptation and preparedness measures across and up-down
- Promote the quality of life!





# Thank you!

Wiktor Szydarowski, Director  
ESPON EGTC

Wiktor.Szydarowski@espon.eu

[www.espon.eu](http://www.espon.eu)

