

**Interreg**  
Baltic Sea Region



Co-funded by  
the European Union



BLUE ECONOMY

**Baltic Sea2Land**

# The Sea2Land Navigator: tools for land-sea interface planning

Riga | 25.10.2023.

Anita Līvija Rozenvalde, MoEPRD

<https://interreg-baltic.eu/project/balticsea2land/>





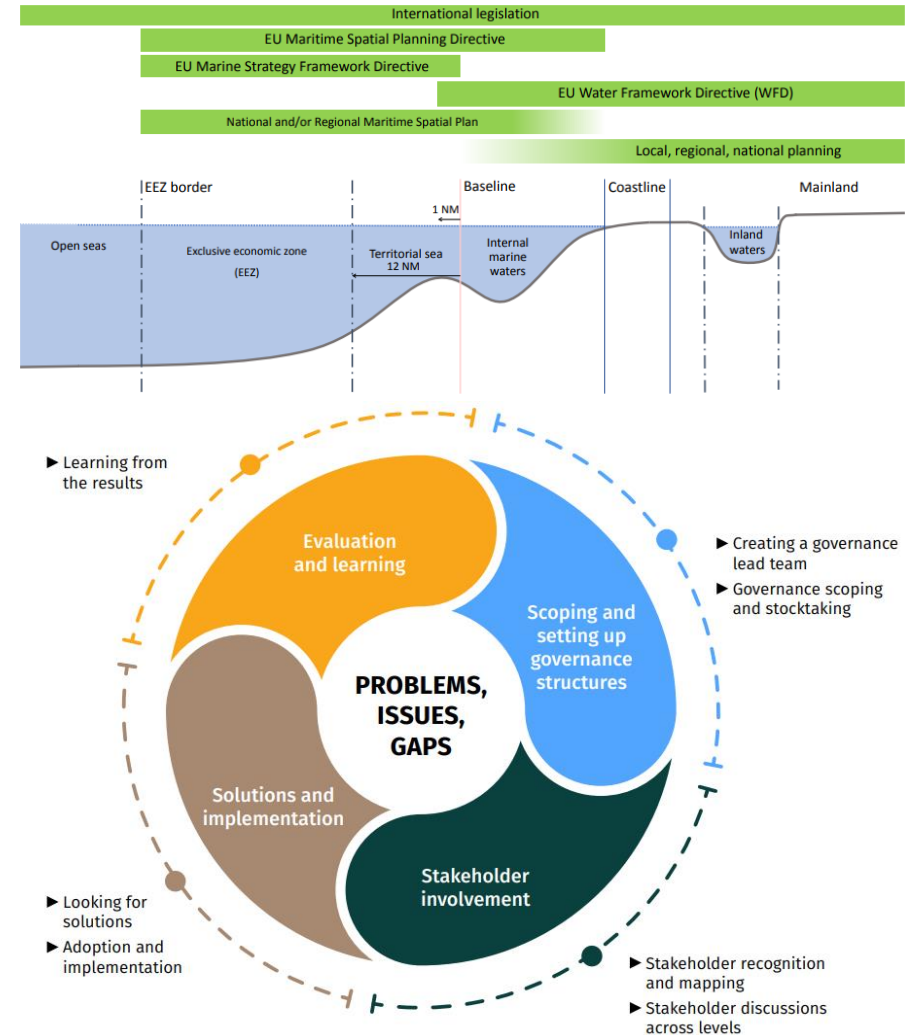
## Breaking down the Sea2Land Navigator

- Background of the tool idea
- Aim and target audience
- 3 Tool components explained
- What comes next?

# Background of the tool idea

## Land-Sea-Act project

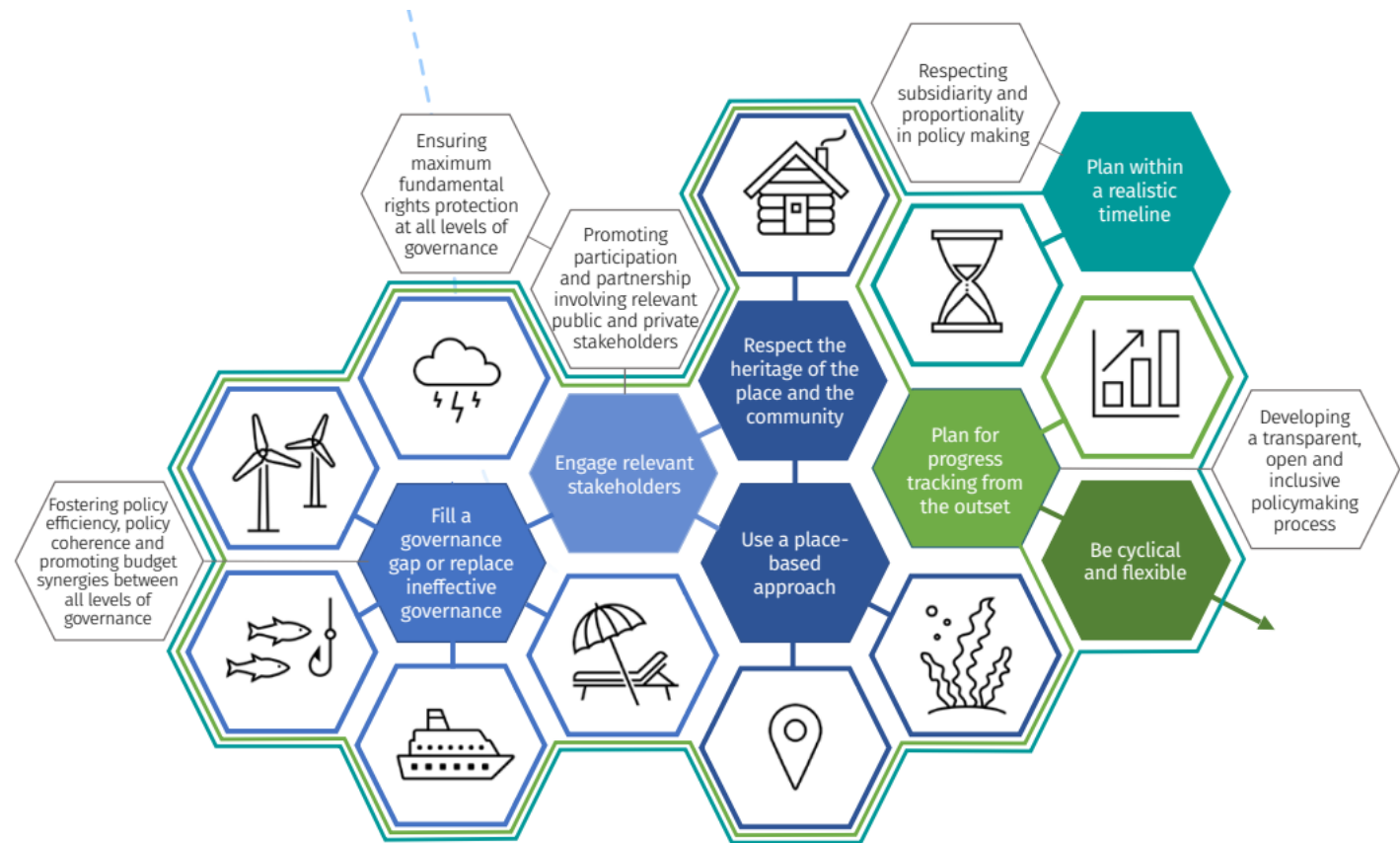
- 6 pilot studies with differing tools, approaches, formality levels, stakeholder engagement routes
- Analysis of pilot methodologies
- Blue Economy assessments
- Drawing these documents together: Multi-Level Governance Agenda



# Background of the tool idea

## Baltic Sea2Land project

- **Full name:** Fostering integrated governance for the joint sustainable use of human and natural capital in the near shore zone
- Addressing the issues identified with planning and managing the land-sea interactions
- Transforming textual guidance to **actionable digital tools**
- Testing the tools **in pilots**
- Creating **training and materials**



# Aim and target audience

## What are we trying to achieve?

- Bring together varying perspectives, knowledge and interests
- Ease access to data across borders and across institutions
- Show innovative, interesting, tested tools and knowledge about using them in practice

## Who is this for?

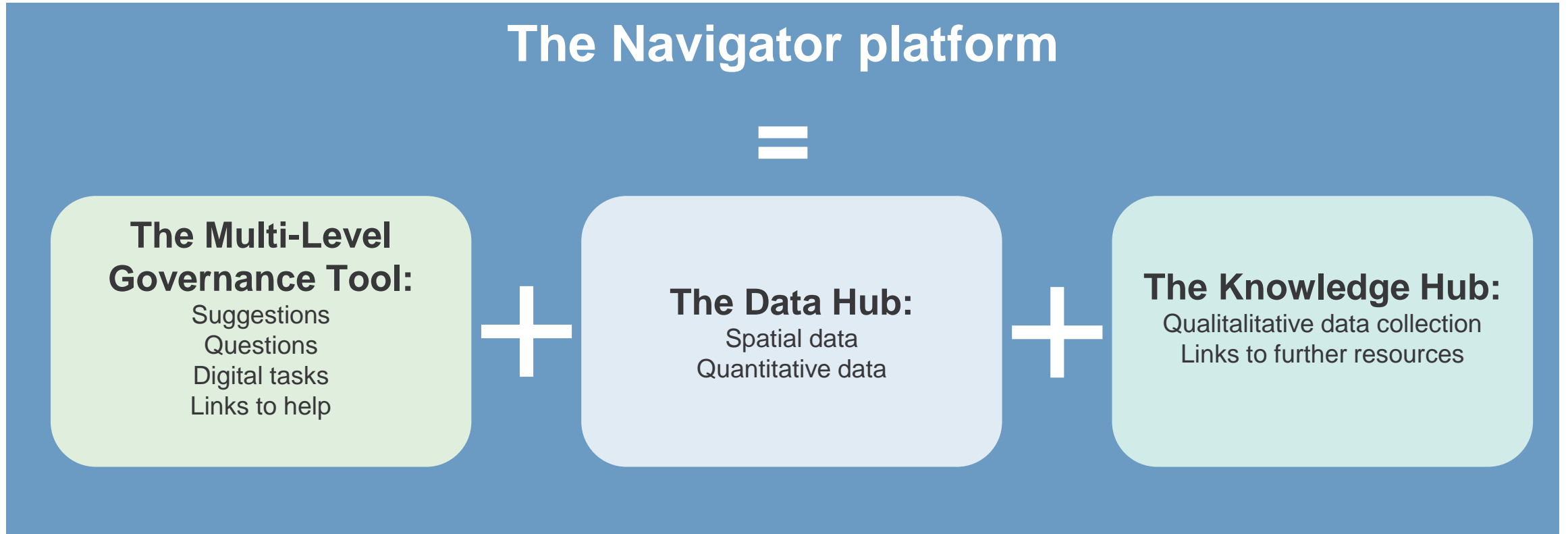
- Planning experts on national/regional/local level who work with maritime and coastal issues

## What is this not?

- A magic prescription
- A ready made solution
- A wheel re-invented



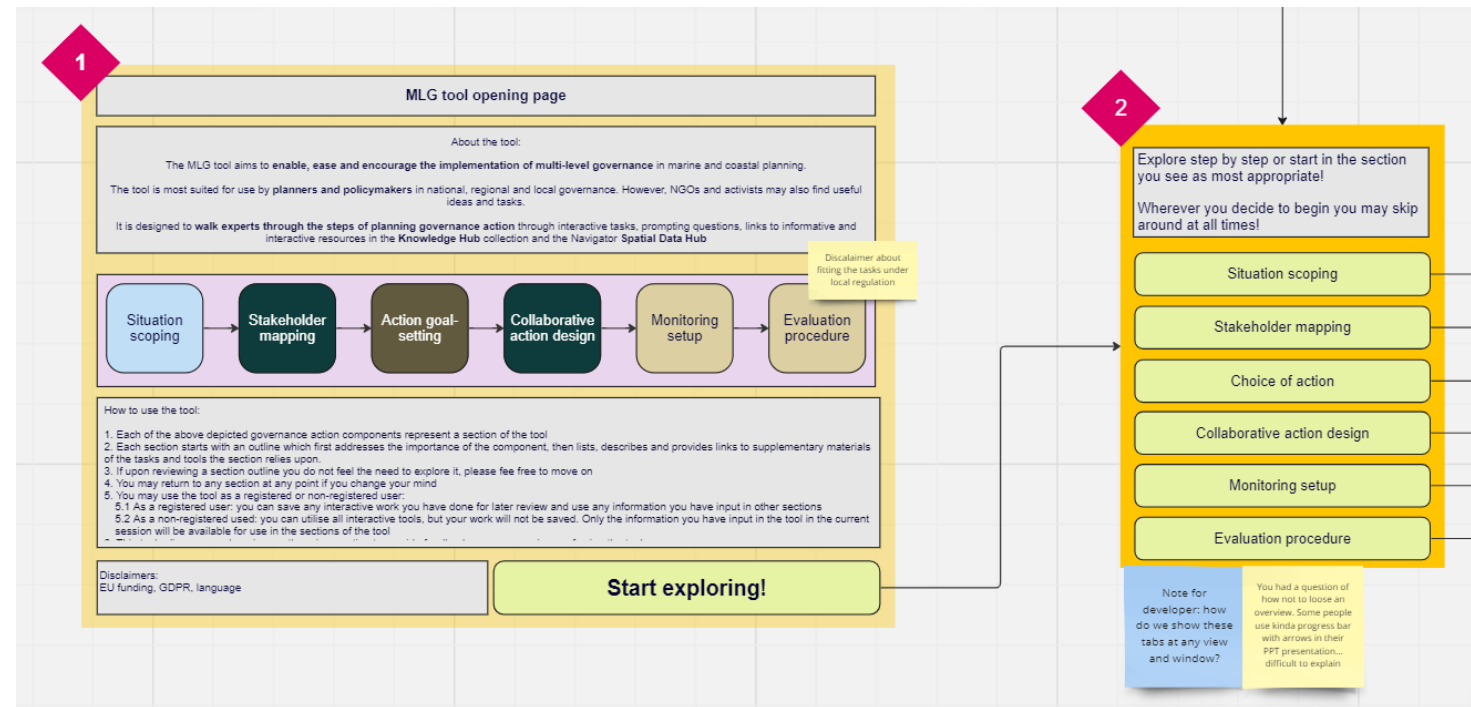
# The Navigator and its components



# The Navigator and its components

## The Multi-Level Governance tool

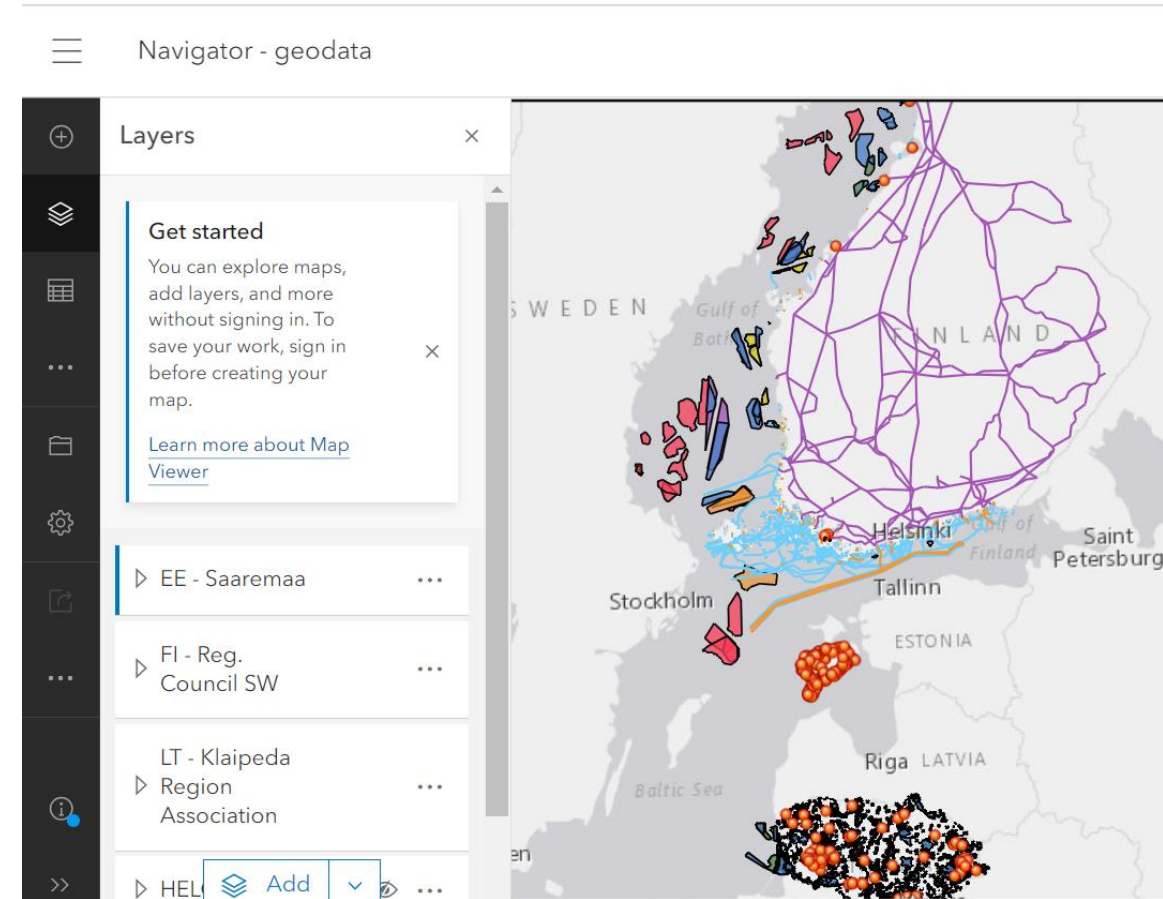
- **Exploration of major steps and considerations of the planning governance process**
- **Interactive tasks**
  - Spatial mapping of governance problems
  - Capacity and relationship mapping of stakeholders
  - Solution trade-off mapping, evaluation and responsibility allocation
  - Evaluation and monitoring set up checklist, questions
- **Links to Data Hub and Knowledge Hub**



# The Navigator and its components

## The Data Hub

- **Data sharing**
  - Common platform for otherwise scattered data
  - Opportunity to make links between miscellaneous, methodologically interesting data and policymakers
  - Ensuring accessible data formatting and structure
- **Data visualisation**
  - Spatial data coverage and overlays
  - Accessible quantitative data depiction
  - Basic data analysis to ease decisionmaking
- **Data inspiration**
  - Metadata and data holder contacts

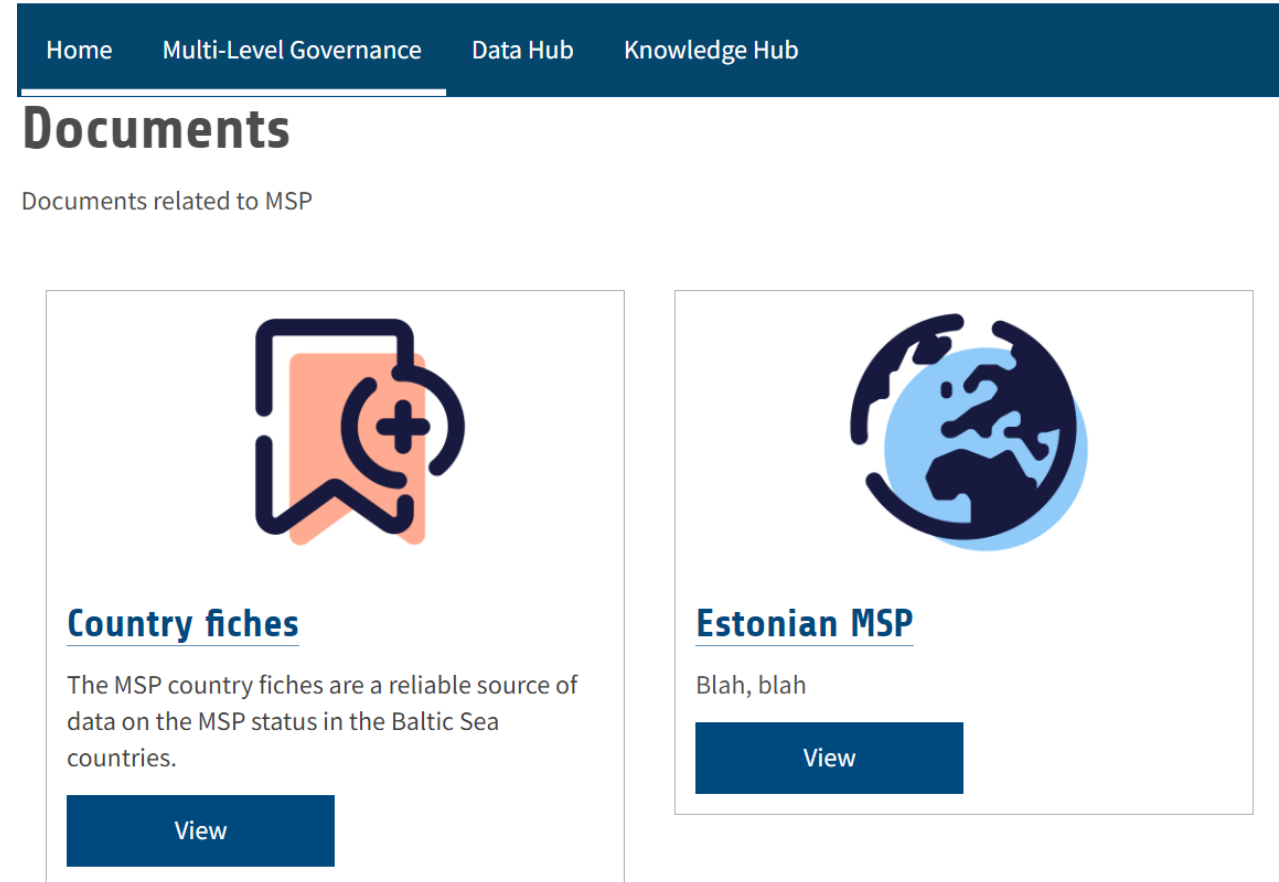




# The Navigator and its components

## The Knowledge Hub

- **Collection of methods and tools**
  - Profiles of established and innovative tools and methods and links to them/further information
  - Ability to filter tools and methods by goal/target audience/resource intensity
- **Valuable tool and method use examples**
  - Analytical reports of both successes and fails – valuable lessons
  - Informative of potential use contexts and conditions
  - Platform to share experiences and build on them
- **Links to key regulations**
  - Easing the comprehension of the regulation constellations always at play
- **Significant scientific publications for further knowledge development**

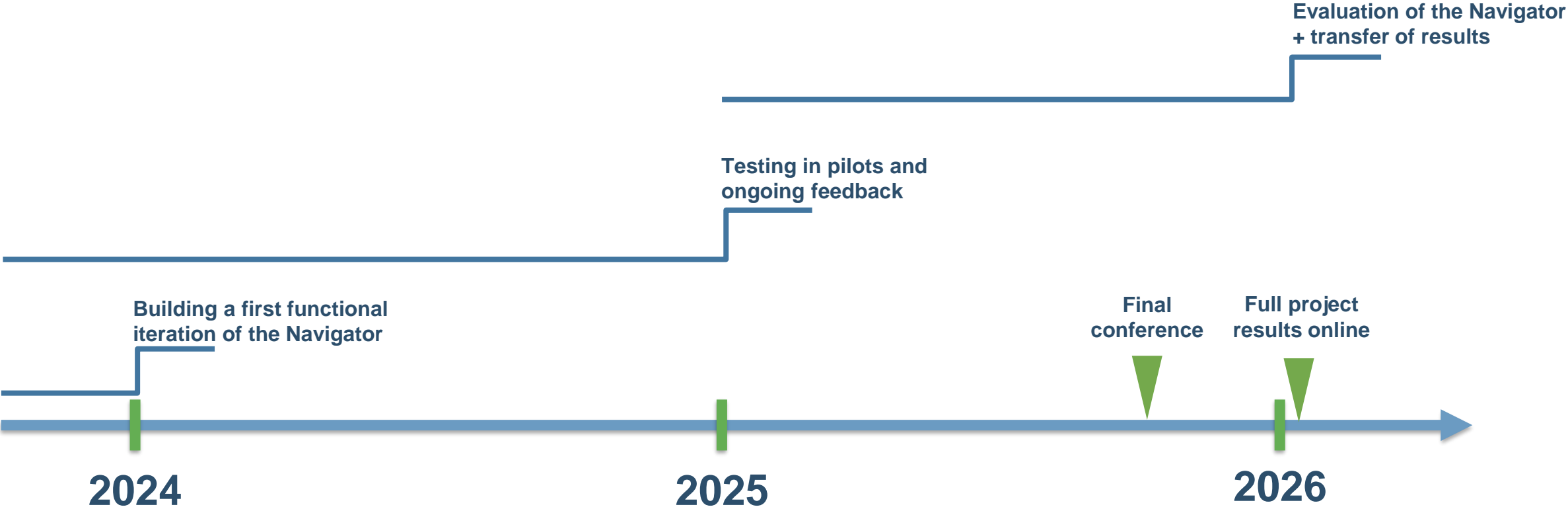


The screenshot displays the Knowledge Hub interface. At the top is a dark blue navigation bar with the following links: Home, Multi-Level Governance, Data Hub, and Knowledge Hub. Below the navigation bar is the main heading "Documents" in a large, bold, dark blue font. Underneath this heading is the text "Documents related to MSP".

There are two document cards displayed below the heading:

- Country fiches**: This card features an icon of a document with a plus sign. The text below the icon reads: "The MSP country fiches are a reliable source of data on the MSP status in the Baltic Sea countries." At the bottom of the card is a dark blue button labeled "View".
- Estonian MSP**: This card features an icon of a globe. The text below the icon reads: "Blah, blah". At the bottom of the card is a dark blue button labeled "View".

# What comes next



# Contact & follow us:

[interreg-baltic.eu/project/BalticSea2Land](https://interreg-baltic.eu/project/BalticSea2Land)

Twitter (X): @BalticSea2Land

#BalticSea2Land



Ministry of Environmental  
Protection and Regional  
Development  
Republic of Latvia

# Thank You!

**Interreg**  
Baltic Sea Region



Co-funded by  
the European Union



BLUE ECONOMY

**Baltic Sea2Land**



Project Number: #C018  
Interreg Baltic Sea Region Programme 2021-2027

