

Joint Spatial Planning in the Capital Region Berlin-Brandenburg

Jürgen Neumüller
Head of Division, European Spatial Development

Planning System and Legal Base

- Federalism
- State Planning
- Regional Planning

State Development Plan Capital Region Berlin-Brandenburg
(formal)

Spatial Development in the Capital Region Berlin-Brandenburg
(informal)

Federalism

Federal Republic of Germany
(„Bundesrepublik Deutschland“)
is a federation of states with

16 states

16 legal systems

16 state administrations

Source:
<https://reise.naanoo.de/statistik/bundeslaender>
(last downloaded 02.11.2020)

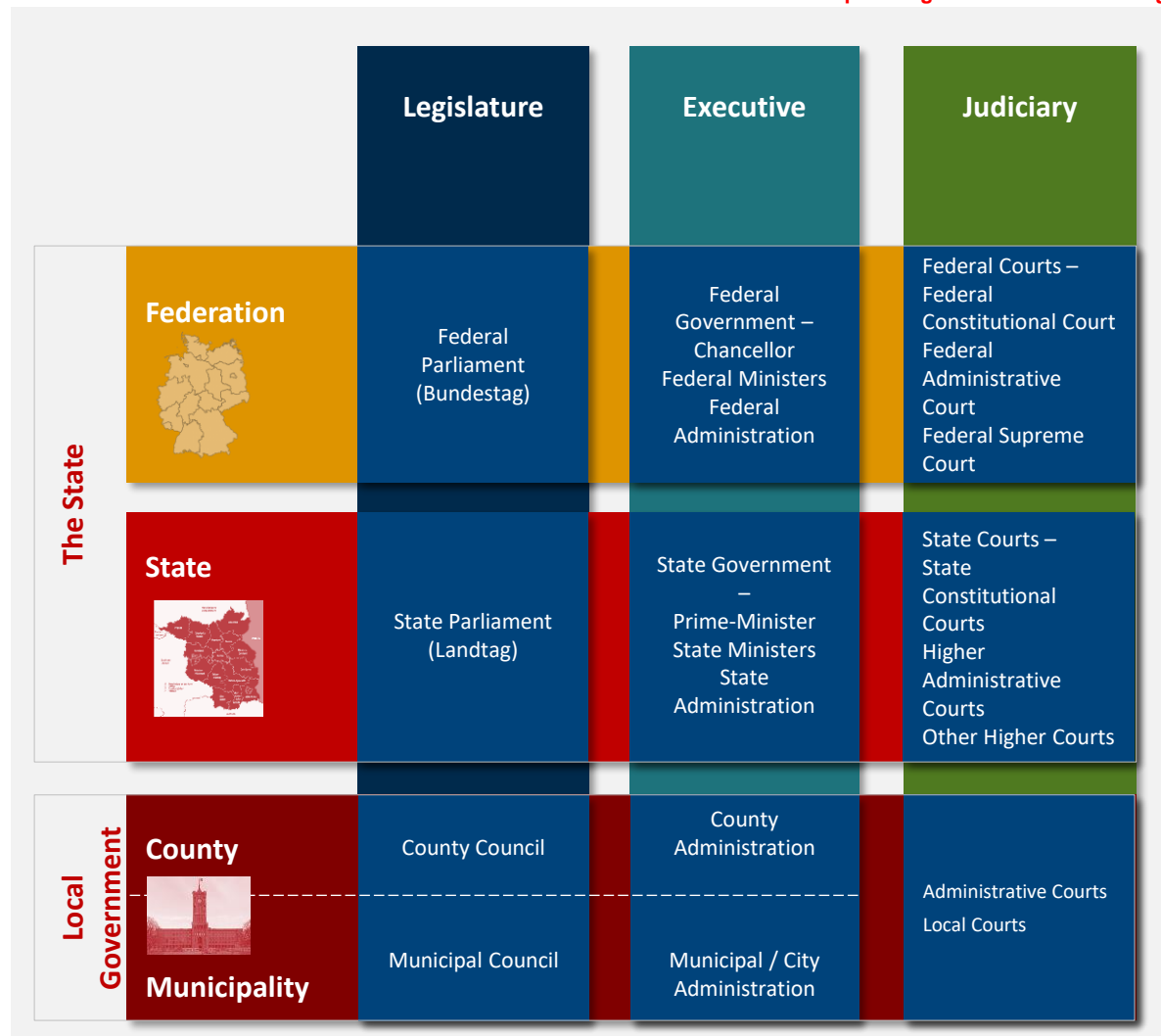


Federal Republic of Germany

Structure of Administration

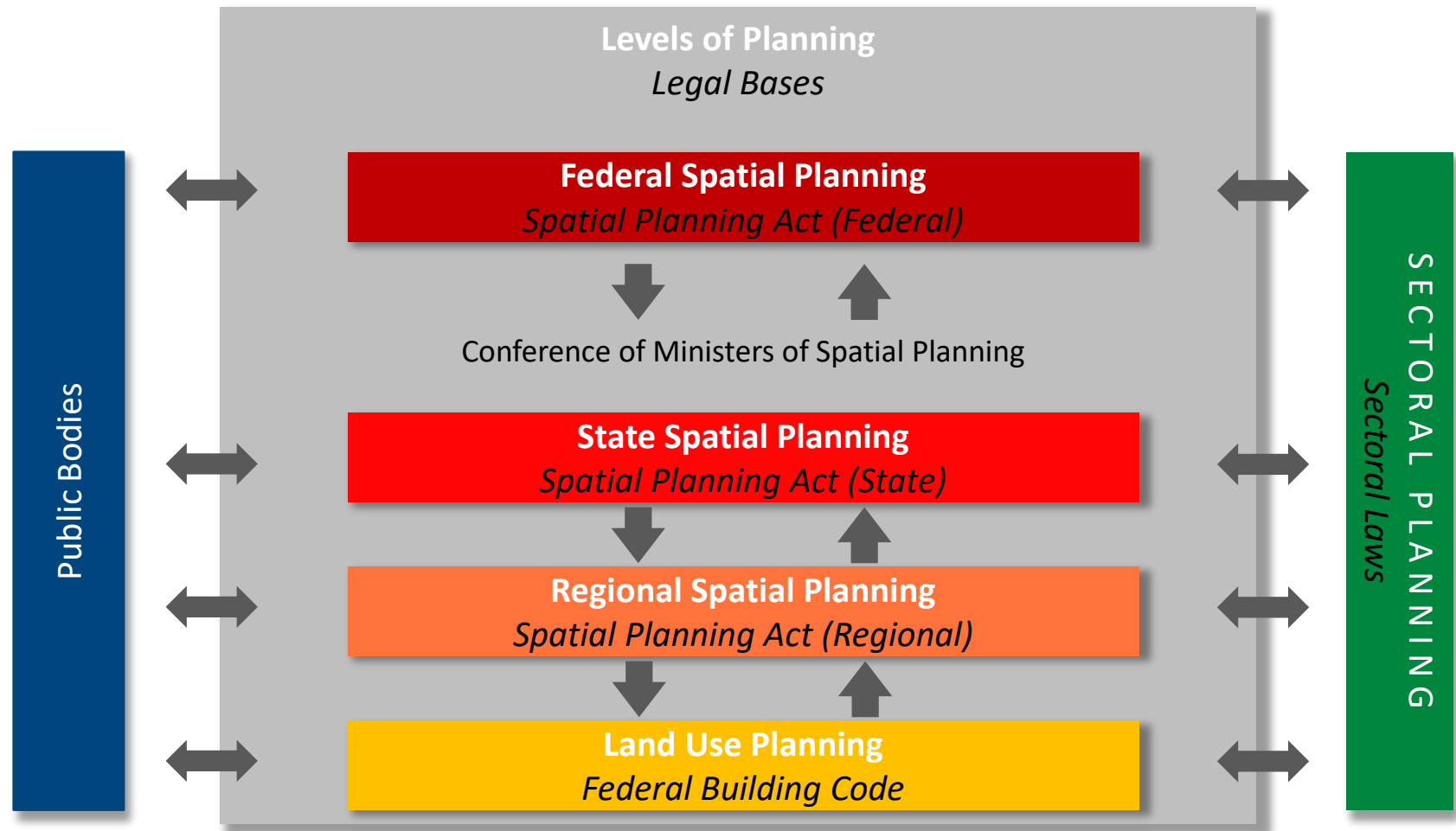
and

Separation of Powers



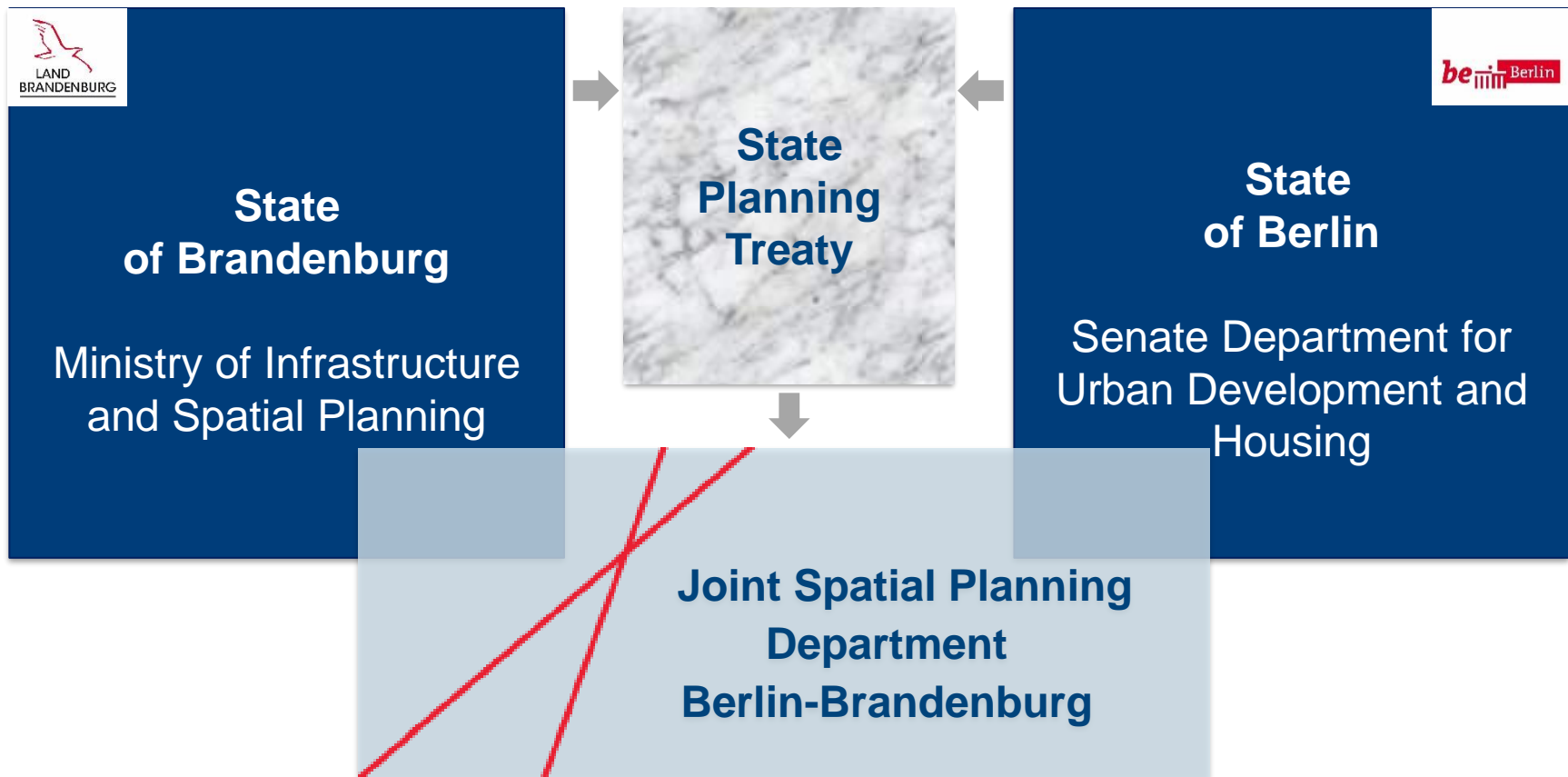
Planning System and Legal Bases

OVERALL SPATIAL PLANNING



Planning System and Legal Bases

Joint Spatial Planning System in Capital Region



Spatial planning for the Capital Region Berlin-Brandenburg

Level

Legal Bases



Planning System and Legal Base

- Federalism
- State Planning
- Regional Planning

State Development Plan Capital Region Berlin-Brandenburg (formal)

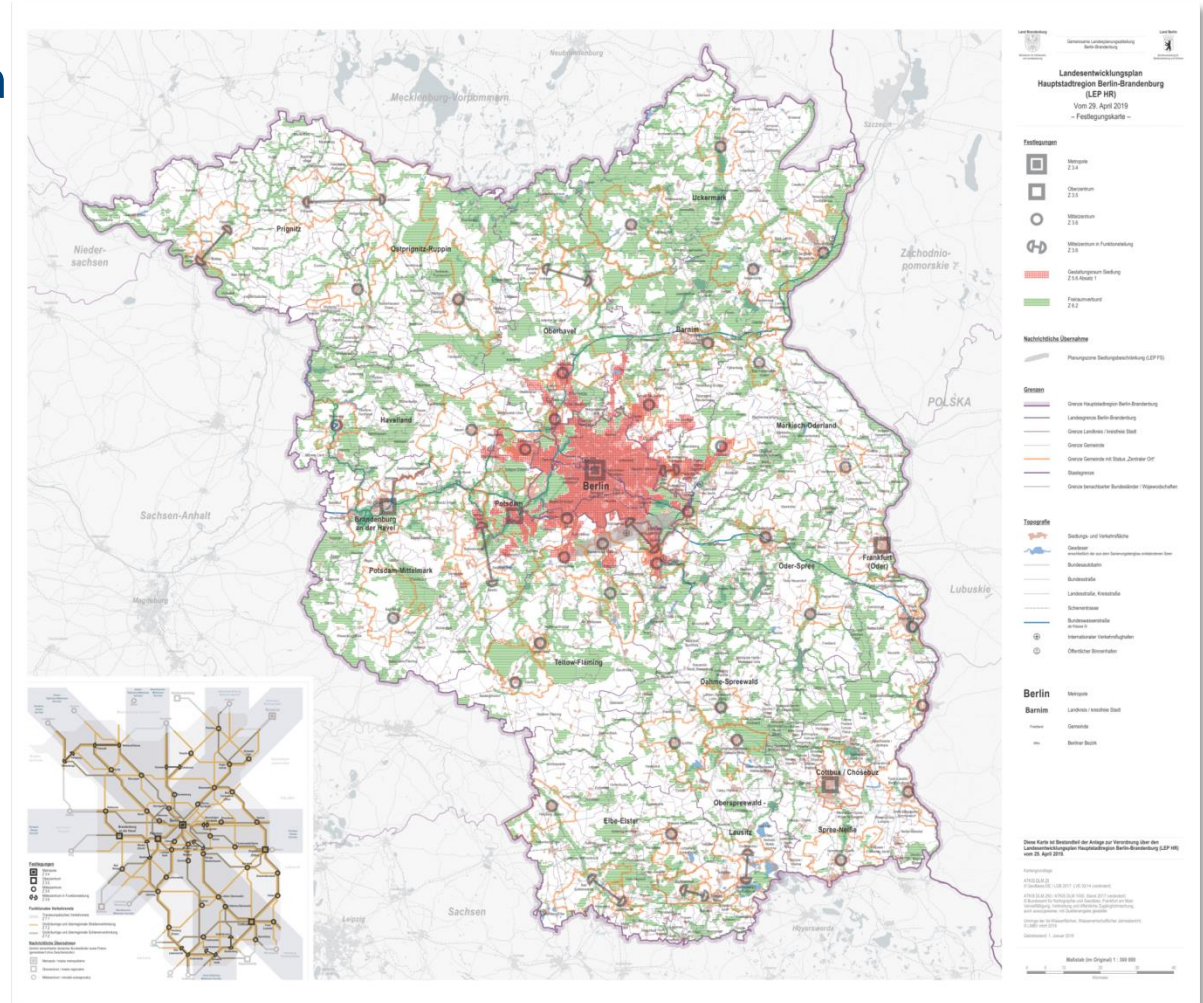
Spatial Development in the Capital Region Berlin-Brandenburg (informal)



Capital Region Berlin-Brandenburg

- Map of Regulations -

Enter into force as from:
1st July 2019



State Development Plan Capital Region - Spatial Controlling

**Together, Berlin and
Brandenburg form the
Capital Region, which is
marked by structural areas:**

Berlin

3 667 000 inhabitants

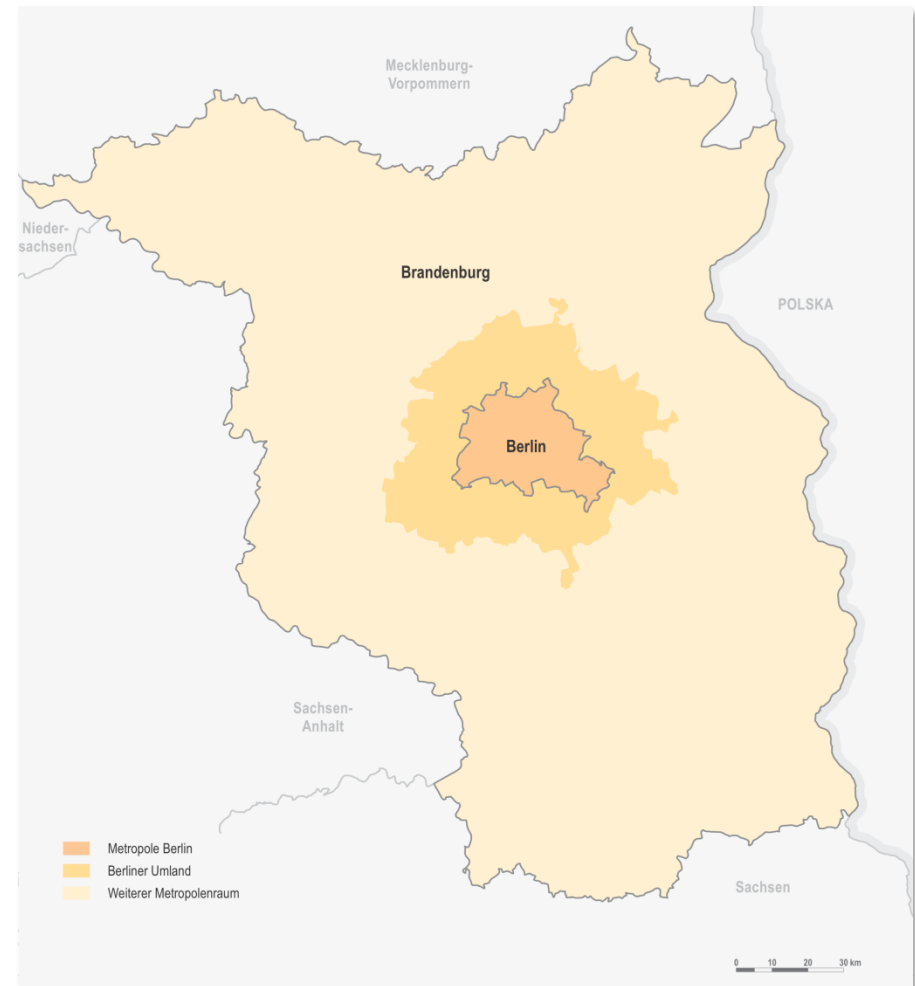
Berlin suburban area

1 012 000 inhabitants

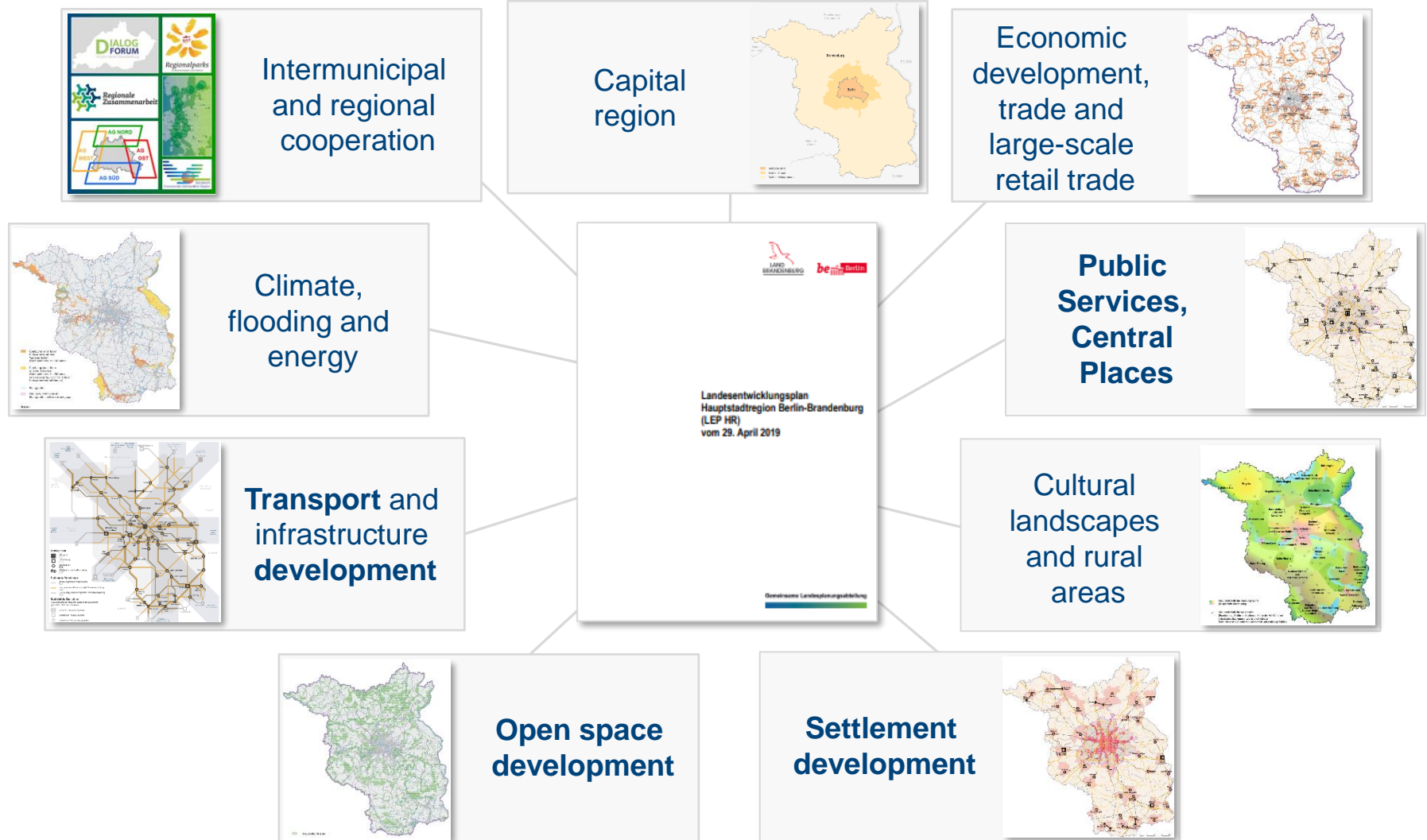
Further metropolitan area

1 519 000 inhabitants

(Data 11/2020)



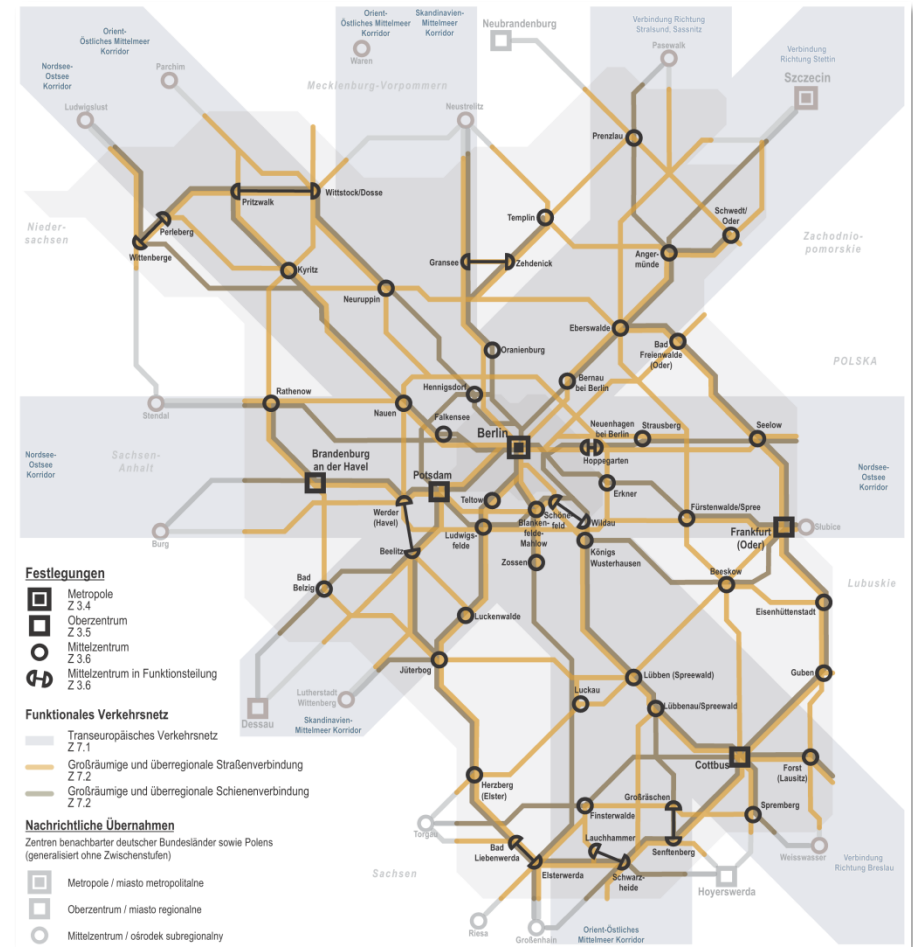
State Development Plan Capital Region - Content - textual regulations



State Development Plan Capital Region - Transportation Development

Transport

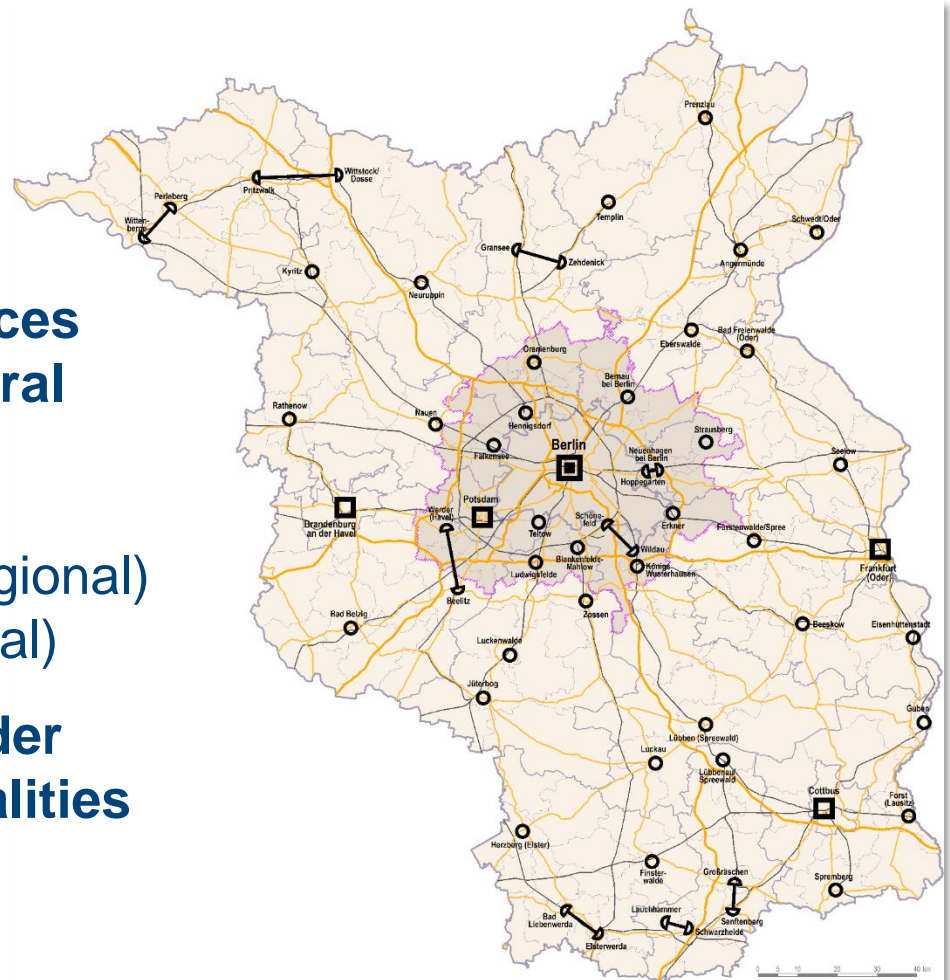
- **Functional Transport Network**
Ensuring the transport connections between central places (railways; motorways)
- **Trans-European Transport Network (TEN-T)**
Connecting the Capital Region and nodes of regional and European relevance within Europe



State Development Plan Capital Region – Spatial Controlling

Public Services, Central Places

- **Basic public services in each municipality**
- **Concentration of public services above municipal level in Central Places (3 levels in state plan)**
 - Metropolis
 - high-order centers (major regional)
 - middle-order centers (regional)
- **No determination of basic-order centers, because all municipalities provide basic public services**

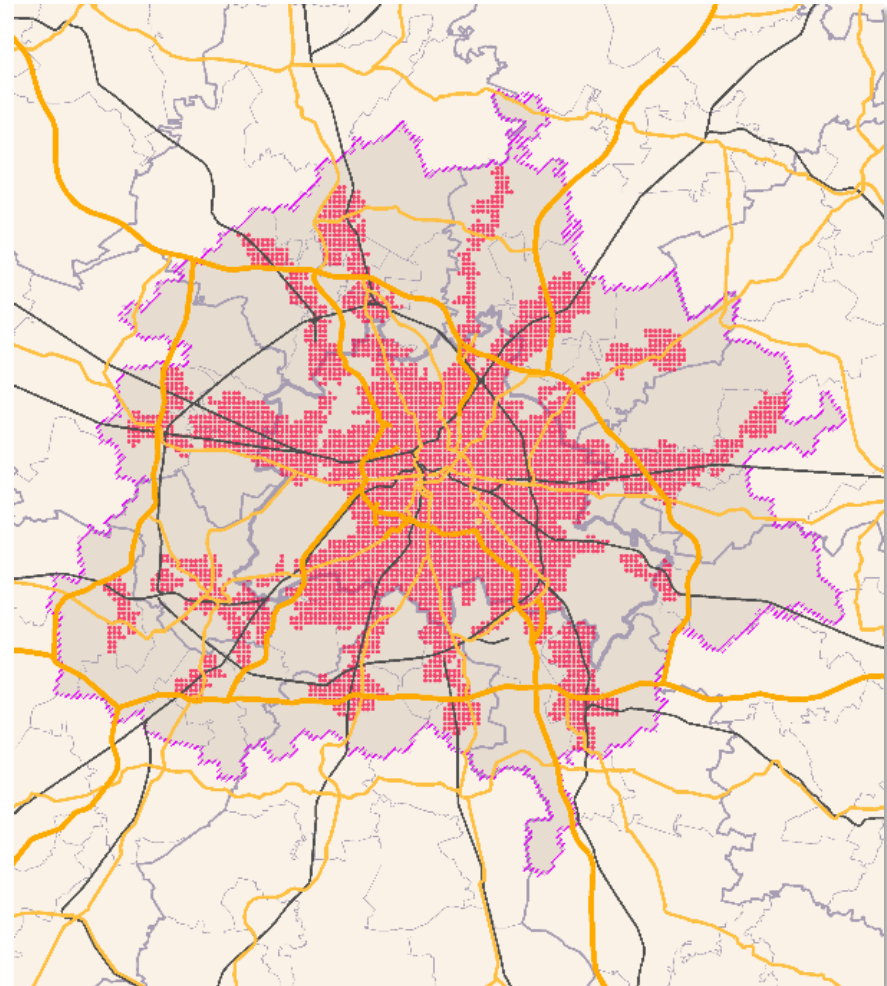


State Development Plan Capital Region – Spatial Controlling

Settlement Development

Berlin and Berlin suburban area: Settlement priority area ("star shaped settlement pattern")

- The core of Berlin and along railway-axes of the suburban region
- Like a "backbone" for the settlement development

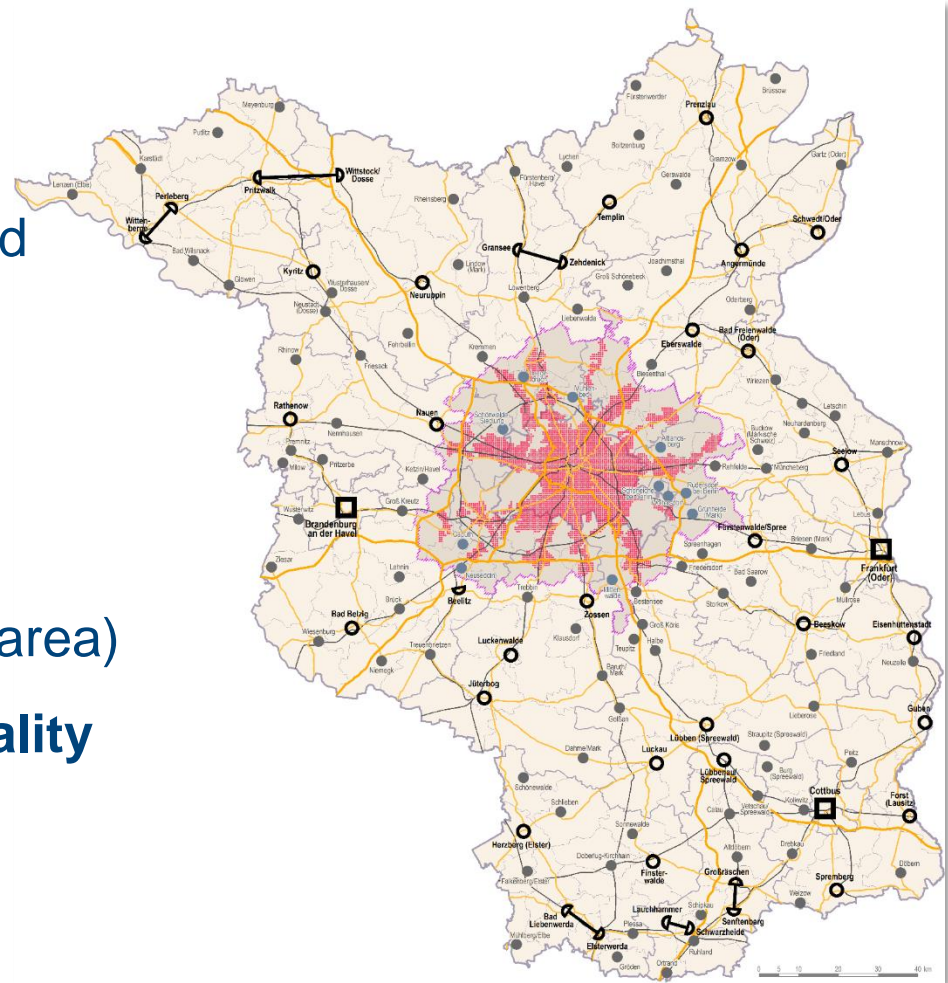


State Development Plan Capital Region – Spatial Controlling

Settlement Development

Main settlement areas (established by state and regional planning):

- **Concentration on Settlement Priority Area**
- **high-order and middle-order centers** (in further metropolitan area)
- **Core Areas for basic functionality** (in Berlin suburban area outside Settlement Priority Area and in further metropolitan area)



State Development Plan Capital Region – Spatial Controlling

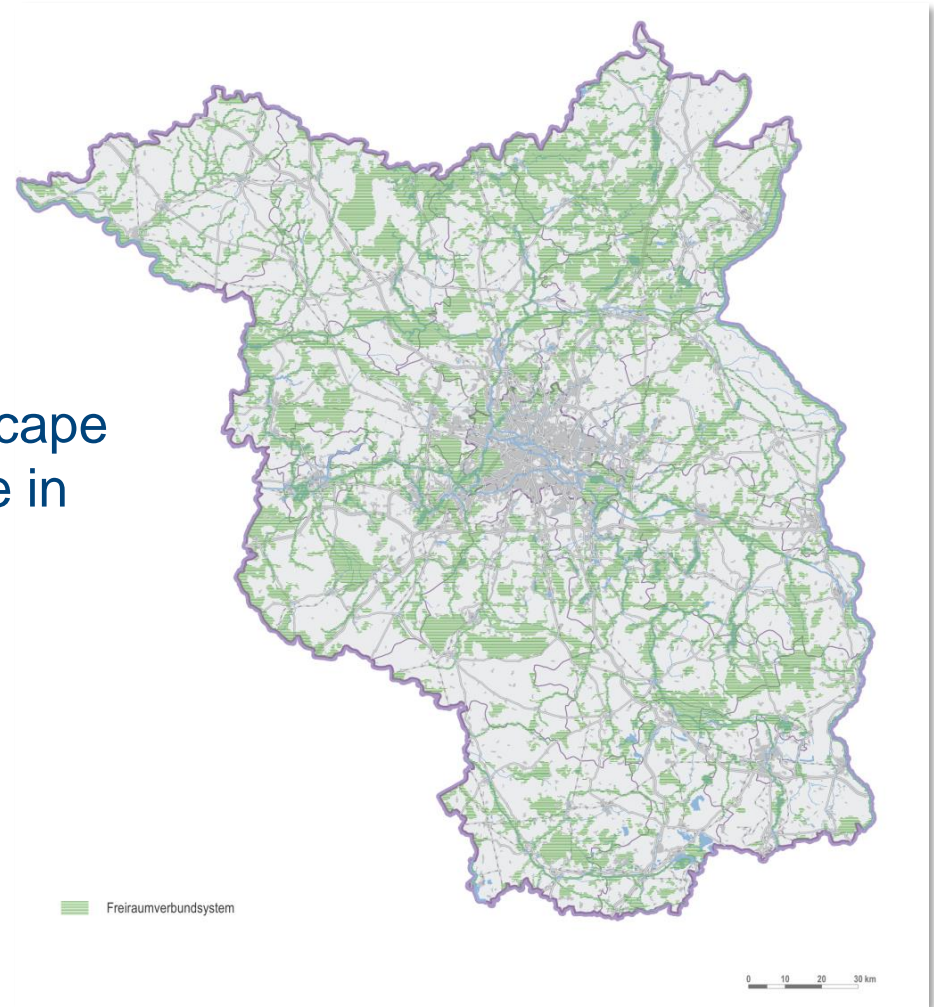
Open Space Development

Open Space Network

- High quality open spaces are spatially secured and networked
- Building development and landscape fragmentation is only permissible in exceptional cases
- Area delimitation is specified in regional plans

Open Space Development

- Should be multi-functional
- With special emphasis on agricultural land use



Planning System and Legal Bases

Regional Planning System in Capital Region

Brandenburg

- Five Regional Planning Associations
- Members: counties, municipalities

Berlin

- Specific objectives of regional planning included in Berlin Land Use Plan (FNP)



Planning System and Legal Base

- Federalism
- State Planning
- Regional Planning

State Development Plan Capital Region Berlin-Brandenburg (formal)

Spatial Development in the Capital Region Berlin-Brandenburg (informal)

Regional Cooperation and Development

Spatial planning provides impulses for intensifying cooperation between different governmental and civil society actors. Examples

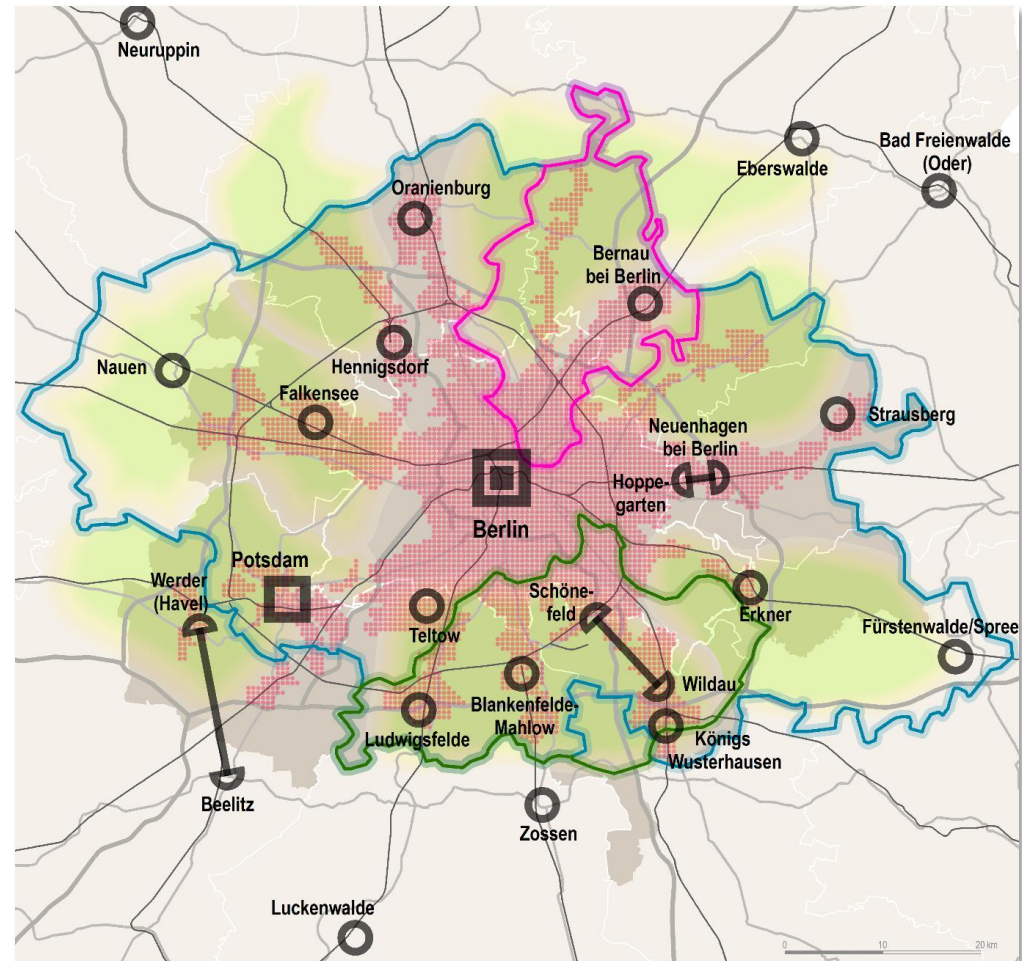
- Berlin suburban co-operation (Neighbourhood Forum)
- Central Places and their interdependence areas
- Development Axis
- Transnational and cross-border integration



Cooperation in the Field of Spatial Development - Examples

Berlin and Berlin suburban area (cross-border – here: involving several federal states):

1. Regional Parks
2. Dialogue Forum
Airport Berlin Brandenburg
3. Axis Development
Concept Pankow-Wandlitz
4. Communal Neighborhood
Forum for Berlin-
Brandenburg



For further information:
www.gl.berlin-brandenburg.de



Thank you for your attention!

Jürgen Neumüller
Head of Division European Spatial Development

Juergen.Neumueller@gl.berlin-brandenburg.de